

CERTIFICATE OF LOCATION OF GOVERNMENT CORNER

County of Anoka

State of Minnesota

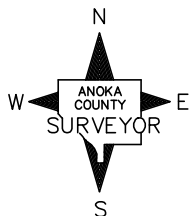
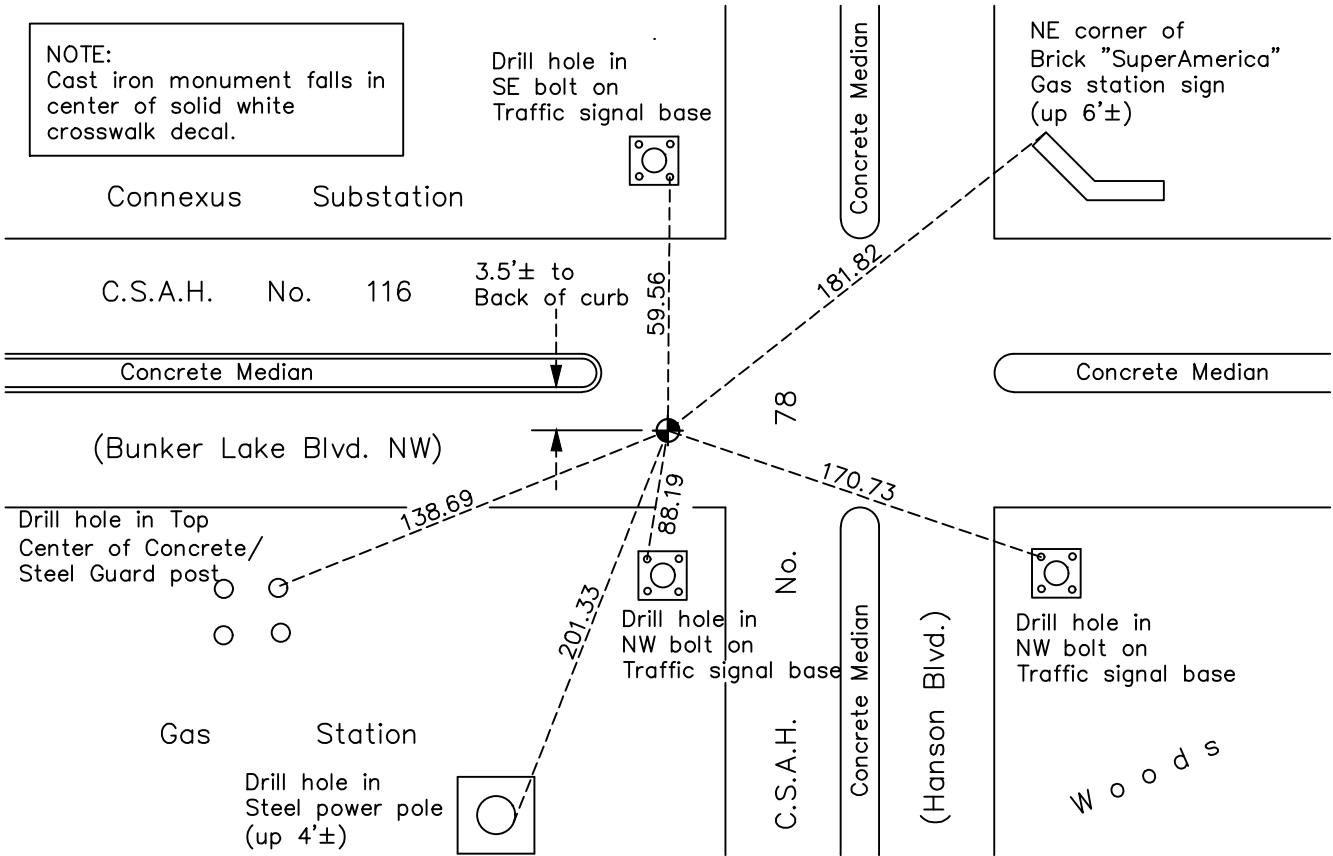
West 1/4 Corner of Sec. 35 Township 32 Range 24

On the 30th day of March, 1962, the described corner was evidenced by a cast iron monument

and to perpetuate the location of said corner, at the exact location thereof, a permanent marker was placed consisting of the cast iron monument

AND on the 16th day of November, 2020, said permanent marker was found flush and the ties were updated

Updated reference ties are as shown below.



Revision Date
 03/18/2021

N.A.D. 1983 Coordinates
 (1996 Adjustment)

County Project Coordinates	
Northing	167084.3205
Easting	489772.4194
Date	6/18/01

I hereby certify that this United States public land survey monument record is correct and complete to the best of my knowledge and belief.

David M Zieglmeier Date 8/2/21

David M. Zieglmeier, Anoka County Surveyor
 Minnesota License Number 46179

HISTORY OF GOVERNMENT CORNER

Page No. 116

County of Anoka

State of Minnesota

West 1/4 Corner of Sec. 35 Township 32 Range 24

CORNER HISTORY:

August 7, 1961 – Freeman, Anderson set cast iron monument using plat of Watt's Garden Acres and established ties to monument.

March 30, 1962 – Found cast iron monument and updated ties.

April 17, 1962 – Updated ties and replaced cast iron monument with a 3/4" iron pipe prior to road construction.

June 9, 1964 – Set cast iron monument after road construction using construction ties. Set P. K. nails 2.00' north and east of monument and updated ties.

August 20, 1964 – Found cast iron monument and updated ties.

July 23, 1968 – Found cast iron monument and updated ties.

July 7, 1972 – Found cast iron monument and updated ties.

June 11, 1976 – Found cast iron monument and updated ties.

July 27, 1978 – Found cast iron monument and updated ties.

September 26, 1978 – Raised cast iron monument and updated ties.

June 7, 1979 – Found cast iron monument and updated ties.

May 28, 1985 – Found cast iron monument flush with the surface and updated ties.

July 19, 1993 – Found cast iron monument and updated ties.

September 2, 1999 – Set construction ties and removed cast iron monument prior to road construction.

June 18, 2001 – Found cast iron monument and established NAD 1983 (1996 Adjustment) Anoka County Project Coordinates by Static GPS methods. Updated ties.

October 11, 2010 – Found cast iron monument and updated ties.

February 29, 2016 – Found cast iron monument and updated ties.

November 16, 2020 – Found cast iron monument and updated ties.