

# CERTIFICATE OF LOCATION OF GOVERNMENT CORNER

County of Anoka

State of Minnesota

## Witness Corner of Sec. 35 Township 32 Range 24

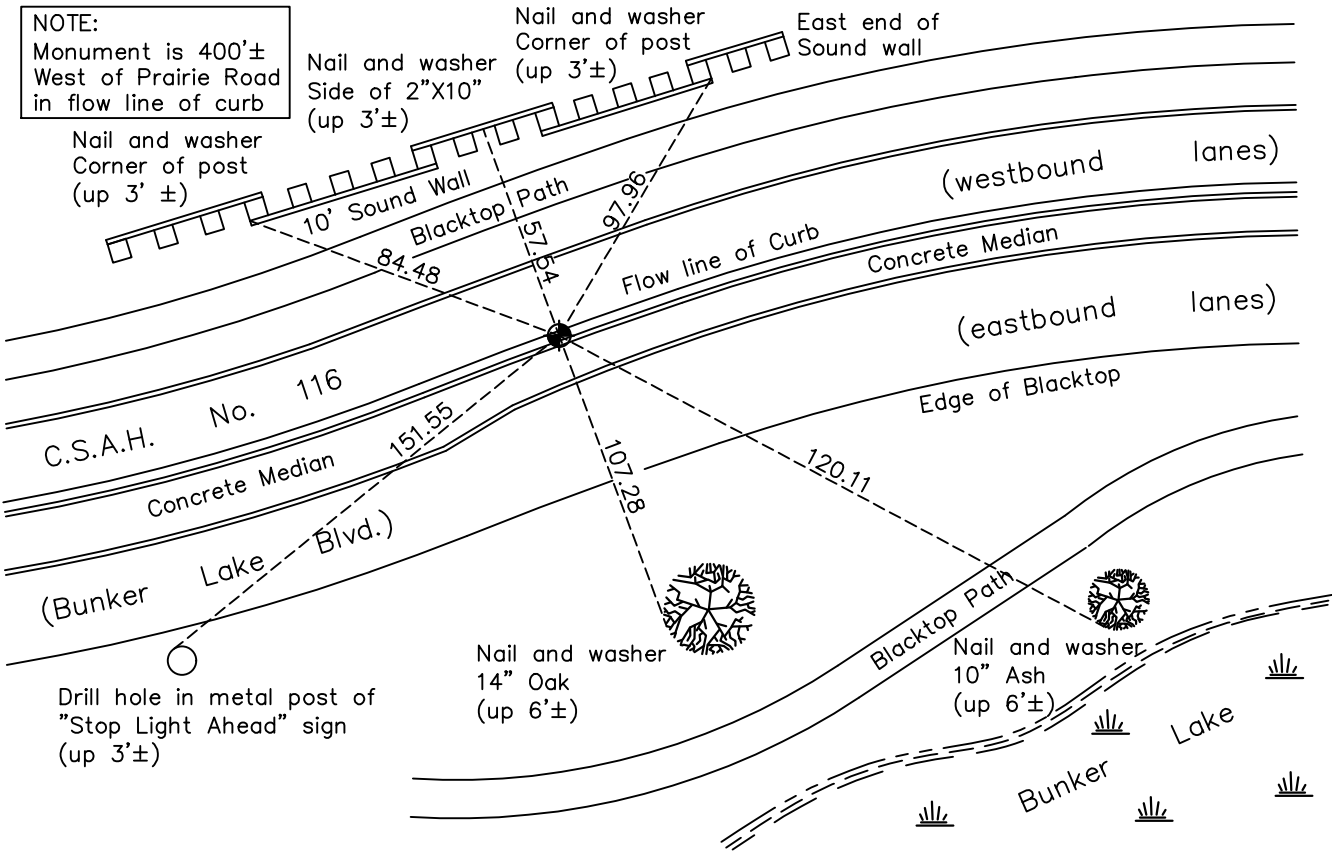
(on east line of section)

On the 16th day of March, 1967, the described corner was evidenced by area resurvey

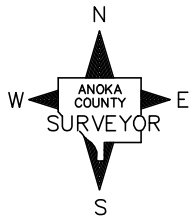
and to perpetuate the location of said corner, at the exact location thereof, a permanent marker was placed consisting of a cast iron monument

AND on the 20th day of October, 2020, said permanent marker was replaced with a slim cast iron monument after road construction and the ties were updated

Updated reference ties are as shown below.



NOTE:  
Monument is 400'±  
West of Prairie Road  
in flow line of curb



Revision Date  
03/18/2021

N.A.D. 1983 Coordinates  
(1996 Adjustment)

County Project Coordinates	
Northing	167569.0000
Easting	495040.9844
Date	10/24/00

I hereby certify that this United States public land survey monument record is correct and complete to the best of my knowledge and belief.  
*David M. Zieglermeier* Date 8/2/21  
David M. Zieglermeier, Anoka County Surveyor  
Minnesota License Number 46179

# HISTORY OF GOVERNMENT CORNER

County of Anoka

State of Minnesota

Witness Corner of Sec. 35 Township 32 Range 24  
(on east line of section)

## **CORNER HISTORY:**

March 16, 1967 – Set P.K. nail using area resurvey and established ties to monument.

May 15, 1967 – Replaced P.K. nail with a cast iron monument and updated ties.

July 23, 1968 – Found cast iron monument and updated ties.

July 10, 1972 – Found cast iron monument and updated ties.

June 16, 1976 – Found cast iron monument and updated ties.

June 12, 1979 – Found cast iron monument and updated ties.

June 24, 1982 – Found cast iron monument and updated ties.

May 28, 1985 – Found cast iron monument and updated ties.

August 4, 1988 – Found cast iron monument and updated ties.

July 23, 1993 – Found cast iron monument and updated ties.

August 31, 1999 – Found cast iron monument and updated ties.

October 24, 2000 – Found cast iron monument and established NAD 1983 (1996 Adjustment) Anoka County Project Coordinates by Static GPS methods. Updated ties.

November 2, 2010 – Found cast iron monument flush with the surface and updated ties.

March 2, 2016 – Found cast iron monument flush with the surface and updated ties.

April 11, 2016 – Set construction ties and removed cast iron monument prior to road construction.

October 5, 2017 – Set slim cast iron monument in flow line of concrete curb on north side of median after road construction using construction ties. Updated ties.

October 20, 2020 – Found cast iron monument flush with the surface and updated ties.