

CERTIFICATE OF LOCATION OF GOVERNMENT CORNER

County of Anoka

State of Minnesota

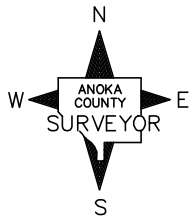
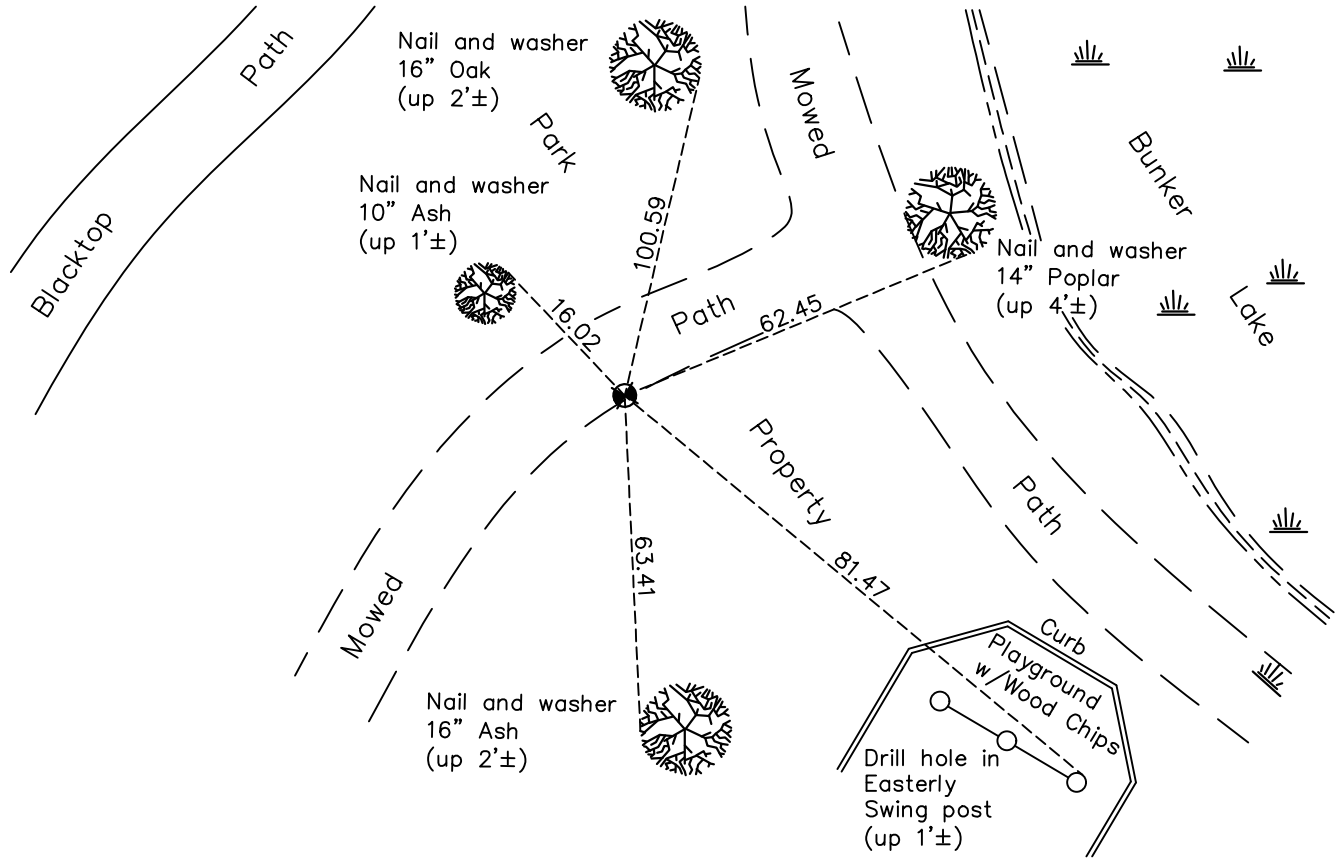
Witness Corner of Sec. 35 Township 32 Range 24
(on east line of section)

On the 10th day of May, 1967, the described corner was evidenced by area resurvey

and to perpetuate the location of said corner, at the exact location thereof, a permanent marker was placed consisting of a cast iron monument

AND on the 16th day of October, 2020, said permanent marker was found down 2'± and the ties were updated

Updated reference ties are as shown below.



Revision Date
03/18/2021

N.A.D. 1983 Coordinates
 (1996 Adjustment)

County Project Coordinates	
Northing	<u>166435.5879</u>
Easting	<u>495019.3903</u>
Date	<u>11/28/00</u>

I hereby certify that this United States public land survey monument record is correct and complete to the best of my knowledge and belief.
David M Zieglsmeier Date 8/2/21
David M. Zieglsmeier, Anoka County Surveyor
 Minnesota License Number 46179

HISTORY OF GOVERNMENT CORNER

County of Anoka

State of Minnesota

Witness Corner of Sec. 35 Township 32 Range 24
(on east line of section)

CORNER HISTORY:

May 10, 1967 – Set cast iron monument down 0.4' using area resurvey and established ties to monument.

July 23, 1968 – Found cast iron monument and updated ties.

June 16, 1976 – Found cast iron monument and updated ties.

June 12, 1979 – Found cast iron monument and updated ties.

June 29, 1982 – Found cast iron monument and updated ties.

June 12, 1985 – Found cast iron monument and updated ties.

August 4, 1988 – Found cast iron monument and updated ties.

July 23, 1993 – Found cast iron monument and updated ties.

November 28, 2000 – Found cast iron monument and established NAD 1983 (1996 Adjustment) Anoka County Project Coordinates by Static GPS methods. Updated ties.

November 1, 2010 – Found cast iron monument down 2'± and updated ties.

March 2, 2016– Found cast iron monument and updated ties.

October 16, 2020– Found cast iron monument and updated ties.