

CERTIFICATE OF LOCATION OF GOVERNMENT CORNER

County of Anoka

State of Minnesota

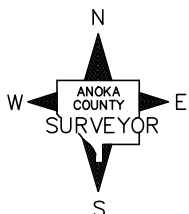
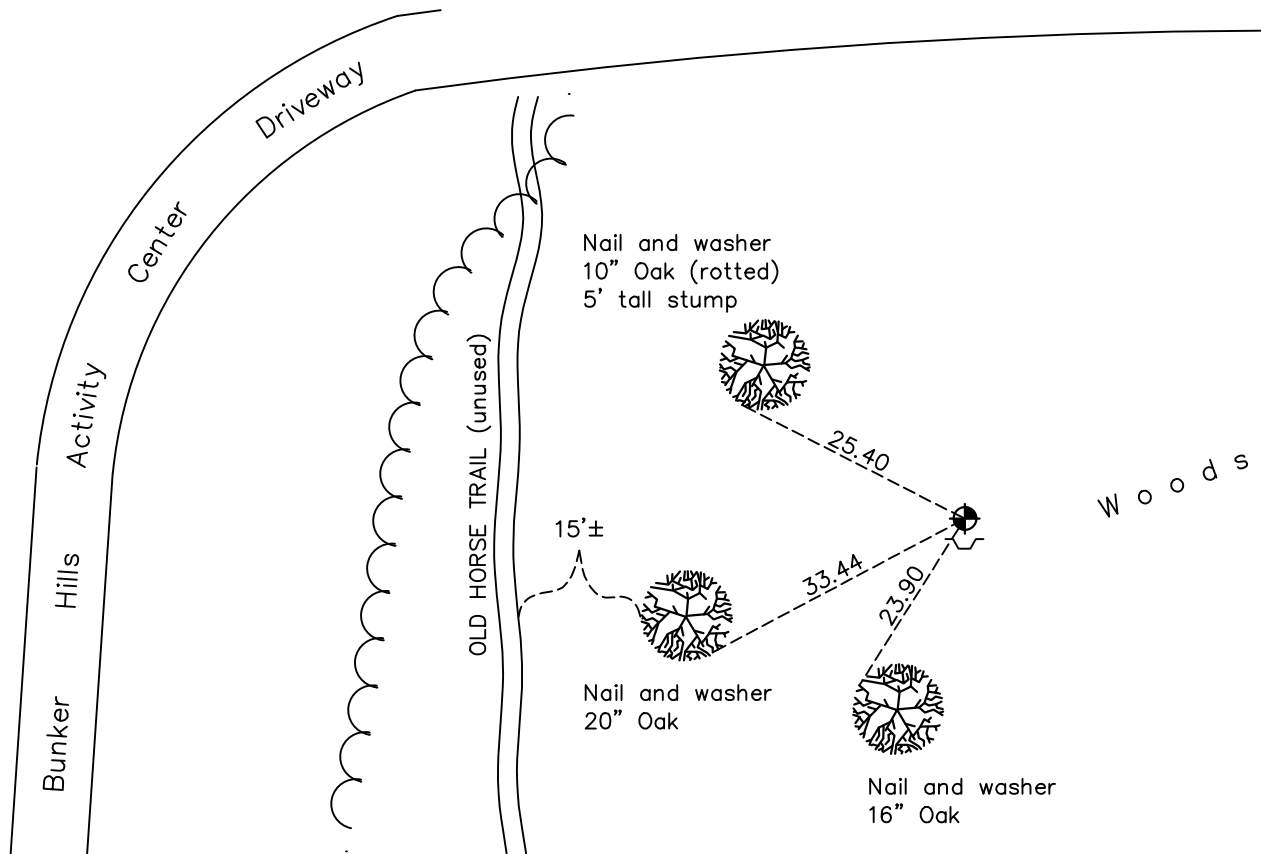
Center Corner of Sec. 36 Township 32 Range 24

On the 23rd day of March, 1973, the described corner was evidenced by area resurvey

and to perpetuate the location of said corner, at the exact location thereof, a permanent marker was placed consisting of a cast iron monument

AND on the 17th day of December, 2020, said permanent marker was found with a sign and post on the south side. The ties were updated. Established location with static GPS methods.

Updated reference ties are as shown below.



Revision Date

9/16/2021

N.A.D. 1983 Coordinates
(1996 Adjustment)

County Project Coordinates	
Northing	<u>166963.9706</u>
Easting	<u>497638.9048</u>
Date	<u>12/17/2020</u>

I hereby certify that this United States public land survey monument record is correct and complete to the best of my knowledge and belief.

David Zieglmeier Date 4/4/23

David M. Zieglmeier, Anoka County Surveyor

Minnesota License Number 46179

HISTORY OF GOVERNMENT CORNER

Page No. 122

County of Anoka

State of Minnesota

Center Corner of Sec. 36 Township 32 Range 24

CORNER HISTORY:

March 23, 1973 - Set cast iron monument using area resurvey. Established ties to monument. Set sign and post 0.5'± south of monument.

June 16, 1976 - Found cast iron monument and updated ties.

June 12, 1979 - Found cast iron monument and updated ties.

July 7, 1982 - Found cast iron monument and updated ties.

May 28, 1985 - Found cast iron monument and updated ties.

August 4, 1988 - Found cast iron monument and updated ties.

December 17, 2020 - Found cast iron monument with sign and post on the south side. Updated ties. Established NAD 1983 (1996 adj.) Anoka County project coordinates by static GPS methods.