

CERTIFICATE OF LOCATION OF GOVERNMENT CORNER

County of Anoka

State of Minnesota

Center Corner of Sec. 36 Township 32 Range 24

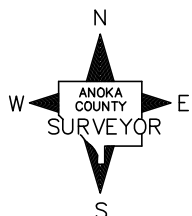
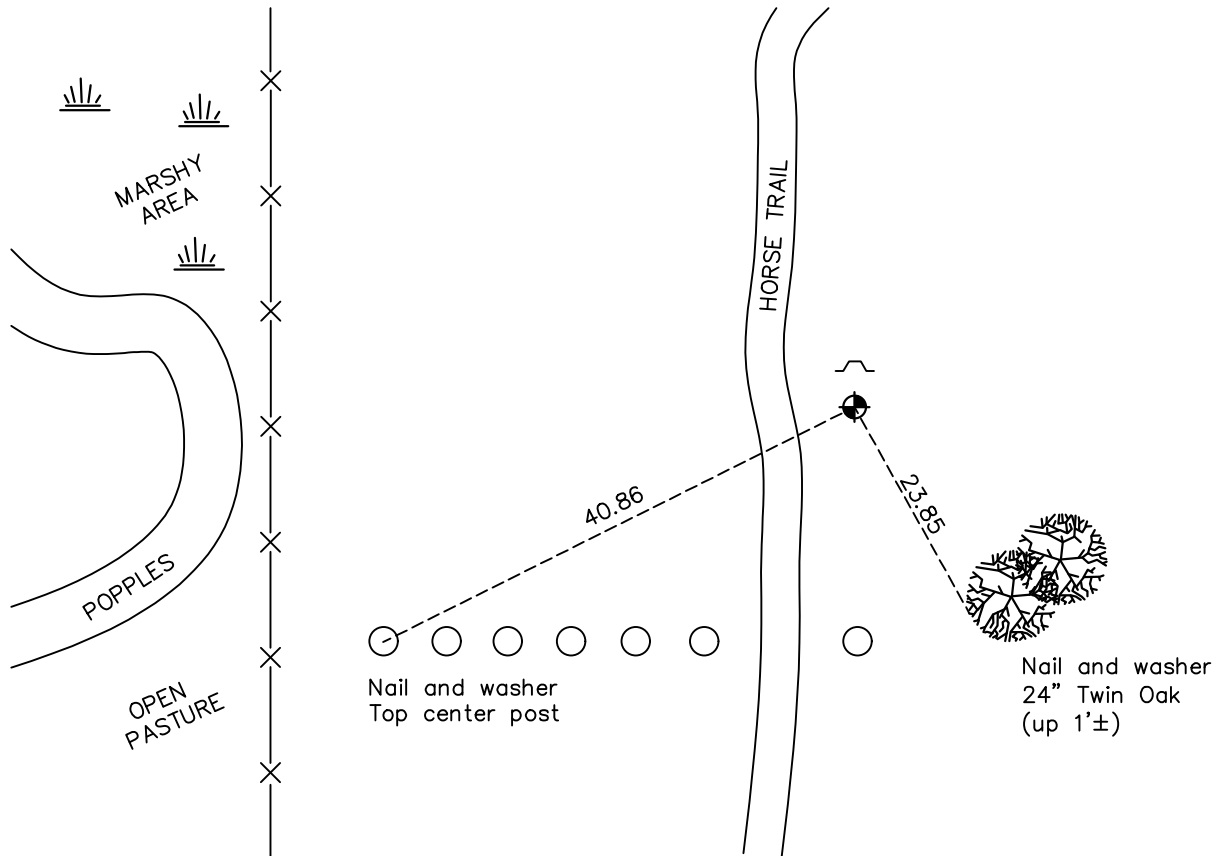
(of the southeast quarter)

On the 5th day of October, 1973, the described corner was evidenced by area resurvey

and to perpetuate the location of said corner, at the exact location thereof, a permanent marker was placed consisting of a cast iron monument.

AND on the 10th day of April, 2023, said permanent marker was found CIM down 0.2'± sign & post on north side. Established A.C. coordinates using RTK GPS methods. Updated ties.

Updated reference ties are as shown below.



Revision Date
4/17/23

N.A.D. 1983 Coordinates
 (2011 Adjustment)

County Project Coordinates	
Northing	<u>165663.860</u>
Easting	<u>498929.111</u>
Date	<u>4/10/2023</u>

I hereby certify that this United States public land survey monument record is correct and complete to the best of my knowledge and belief.

David Zieglmeier Date 6/26/23

David M. Zieglmeier, Anoka County Surveyor
 Minnesota License Number 46179

HISTORY OF GOVERNMENT CORNER

Page No. 123

County of Anoka

State of Minnesota

Center Corner of Sec. 36 Township 32 Range 24
(of the southeast quarter)

CORNER HISTORY:

October 5, 1973 - Set a cast iron monument using area resurvey. Established ties to monument.

June 16, 1976 - Found cast iron monument and updated ties.

June 12, 1979 - Found cast iron monument and updated ties.

August 5, 1988 - Found cast iron monument and updated ties. Set sign and post on north side.

April 10, 2023 - Found cast iron monument down 0.2'± from surface and established Anoka County project Coordinates by RTK GPS methods and updated ties.