

CERTIFICATE OF LOCATION OF GOVERNMENT CORNER

County of Anoka

State of Minnesota

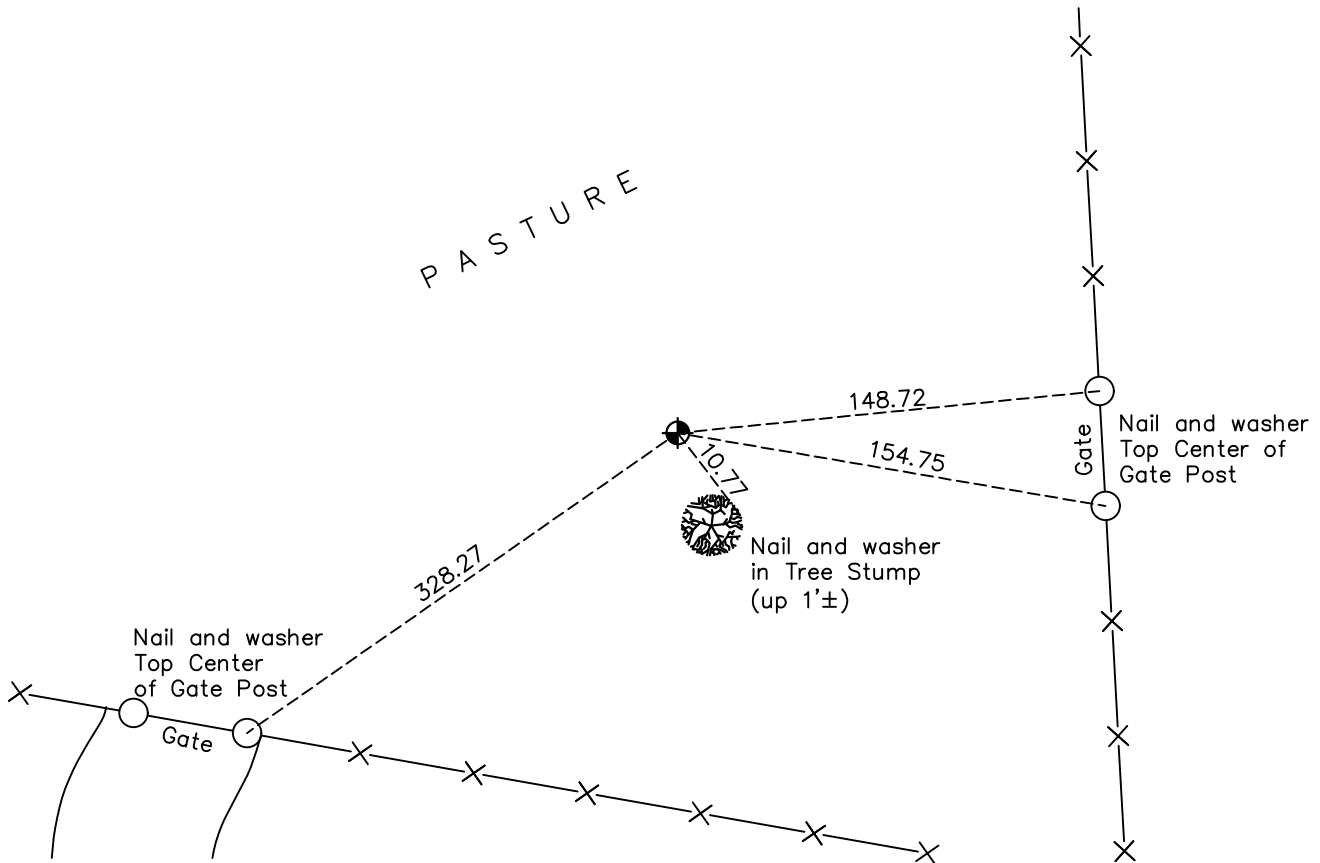
South 1/16 Corner of Sec. 36 Township 32 Range 24

On the 5th day of October, 1973, the described corner was evidenced by an area resurvey

and to perpetuate the location of said corner, at the exact location thereof, a permanent marker was placed consisting of a Cast Iron Monument

AND on the 7th day of July, 2023, said permanent marker was removed found broken CIM & reset w/ Solid Cast Iron Monument set down 0.6'± to published coordinates & established ties

Updated reference ties are as shown below.



Revision Date

10/06/2023

N.A.D. 1983 Coordinates
(2011 Adjustment)

County Project Coordinates	
Northing	164304.272
Easting	498903.600
Date	7/07/2023

I hereby certify that this United States public land survey monument record is correct and complete to the best of my knowledge and belief.

David Zieglmeier Date 12/7/23

David M. Zieglmeier, Anoka County Surveyor
Minnesota License Number 46179

HISTORY OF GOVERNMENT CORNER

Page No. 124

County of Anoka

State of Minnesota

South 1/16 Corner of Sec. 36 Township 32 Range 24

CORNER HISTORY:

October 5, 1973 - Set Cast Iron Monument from area resurvey and established ties

June 16, 1976; June 12, 1979; July 7, 1982; June 13, 1985; August 5, 1988 - Found Cast Iron Monument and updated ties

July 7, 2023 - Removed found broken Cast Iron Monument and Reset with a Solid Cast Iron Monument, set down 0.6'±, to published coordinates. New ties established as all historical ties were missing.