

CERTIFICATE OF LOCATION OF GOVERNMENT CORNER

County of Anoka

State of Minnesota

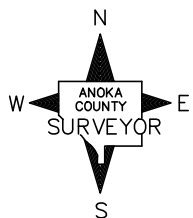
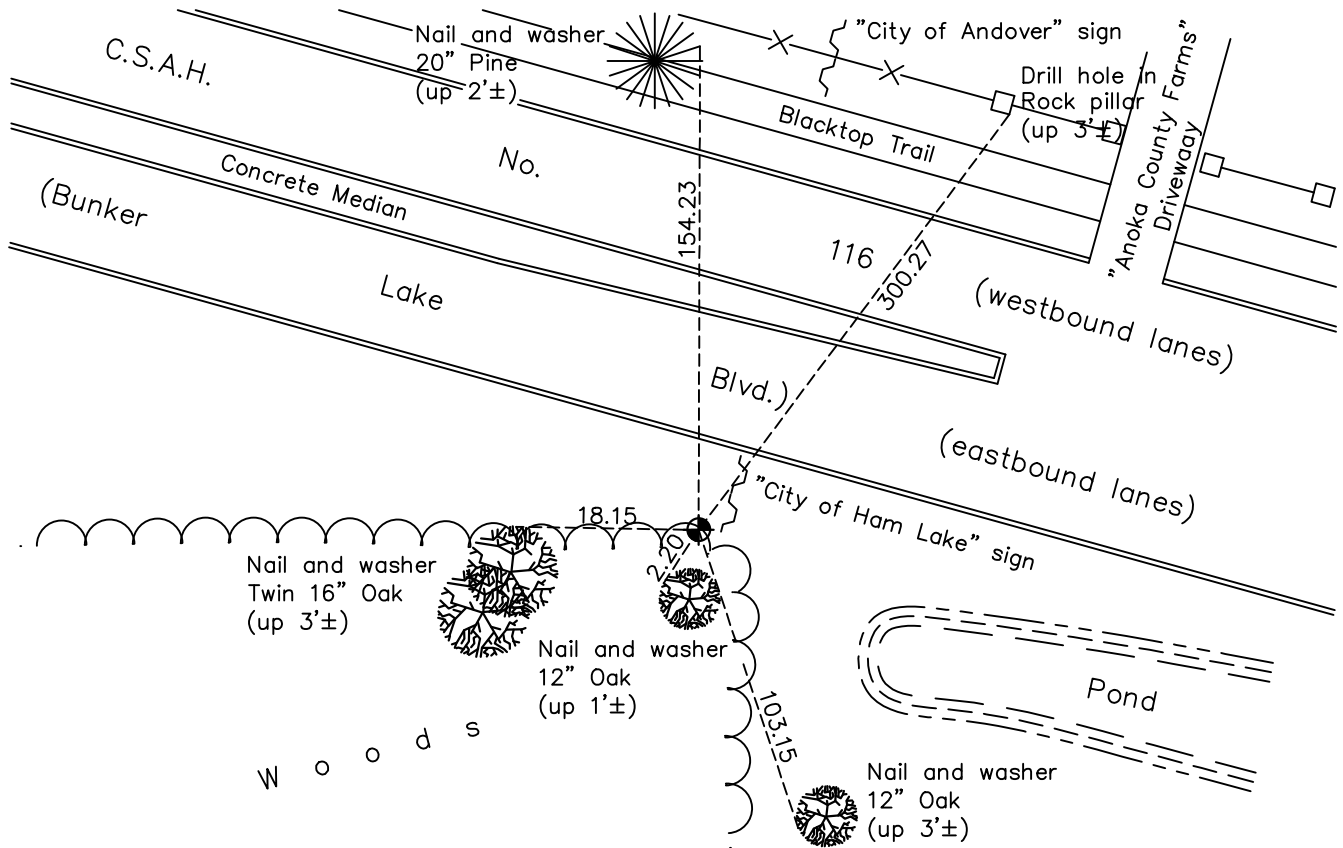
East 1/4 Corner of Sec. 36 Township 32 Range 24

On the 7th day of October, 1966, the described corner was evidenced by a Tee iron

and to perpetuate the location of said corner, at the exact location thereof, a permanent marker was placed consisting of a cast iron monument with a sign and post on the southwest side

AND on the 24th day of January, 2023, said permanent marker was found down 0.1'± and coordinates were updated using County RTK method

Updated reference ties are as shown below.



Revision Date

1/25/2023

N.A.D. 1983 Coordinates
(2011 Adjustment)

County Project Coordinates	
Northing	166943.215
Easting	500245.935
Date	11/29/00

I hereby certify that this United States public land survey monument record is correct and complete to the best of my knowledge and belief.

David Zieglmeier Date 3/1/23

David M. Zieglmeier, Anoka County Surveyor
Minnesota License Number 46179

HISTORY OF GOVERNMENT CORNER

Page No. 126

County of Anoka

State of Minnesota

East 1/4 Corner of Sec. 36 Township 32 Range 24

CORNER HISTORY:

September 14, 1960 – Found T iron down 0.1' with field stones placed around it. Established ties to monument.

June 9, 1964 – Found iron and rocks undisturbed.

July 22, 1964 – Found T iron and updated ties.

August 5, 1966 – Found T iron and updated ties.

October 7, 1966 – Replaced T iron with a cast iron monument. Updated ties.

May 20, 1971 – Found cast iron monument and updated ties.

June 13, 1975 – Found cast iron monument and updated ties.

June 20, 1978 – Found cast iron monument and updated ties.

July 6, 1981 – Found cast iron monument and updated ties.

June 27, 1984 – Found cast iron monument and updated ties.

June 30, 1987 – Found cast iron monument and updated ties.

November 20, 1991 – Found cast iron monument and updated ties.

November 29, 2000 – Found cast iron monument and established NAD 1983 (1996 Adjustment) Anoka County Project Coordinates by Static GPS methods. Set sign and post on the southwest side of monument and updated ties.

October 7, 2010 – Found cast iron monument flush with the surface and with sign and post on the southwest side of monument. Updated ties.

March 1, 2016 – Found cast iron monument and updated ties.

March 7, 2016 – Set construction ties and removed cast iron monument prior to road construction.

October 4, 2017– Set cast iron monument after road construction using construction ties. Updated ties.

October 16, 2020 – Found cast iron monument and updated ties.

January 24, 2023 – Found cast iron monument, position verified by County RTK GPS method, ties were reviewed and coordinates were updated. Previous Coordinates NAD 1983 (1996 adj) Northing 166943.3017; Easting 500245.8501