

CERTIFICATE OF LOCATION OF GOVERNMENT CORNER

County of Anoka

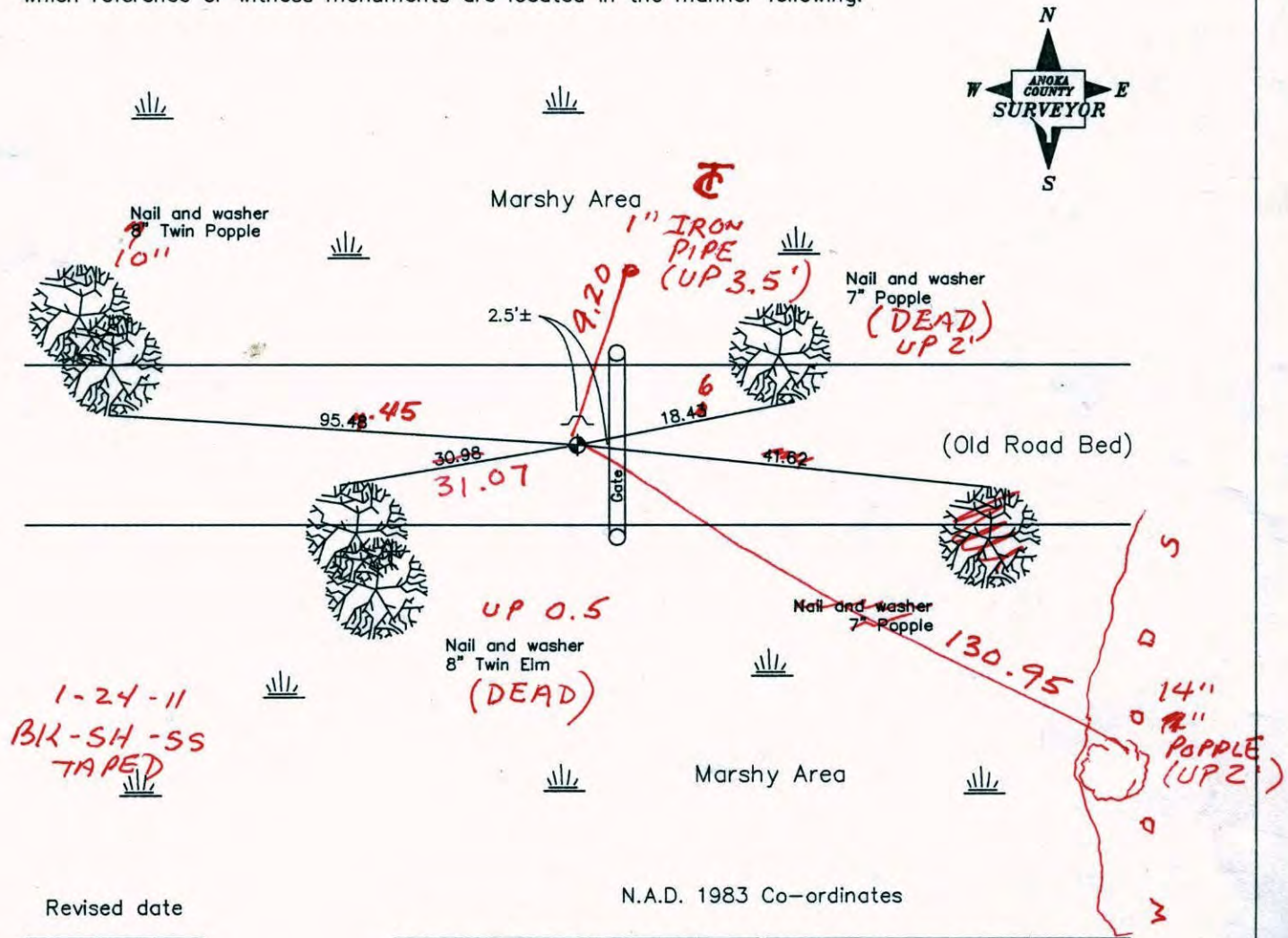
State of Minnesota

Northeast Corner of Sec. 1 Township 32 Range 24

I hereby certify that on the 26th day of January, 1962, I found the described corner which was evidenced by a granite monument

and I further certify that to perpetuate the location of said corner, I did, at the exact location thereof, place a permanent marker consisting of a cast iron monument on top of the granite monument with sign and post on the north side. ✓

which reference or witness monuments are located in the manner following:



Revised date

7/26/93
4/23/98
12/6/00

N.A.D. 1983 Co-ordinates

County Project Co-ordinates	State Plane Co-ordinates
Northing <u>195834.5046</u>	Y _____
Easting <u>500334.0166</u>	X _____

Date 12/6/00

CERTIFICATE OF LOCATION OF GOVERNMENT CORNER

County of Anoka

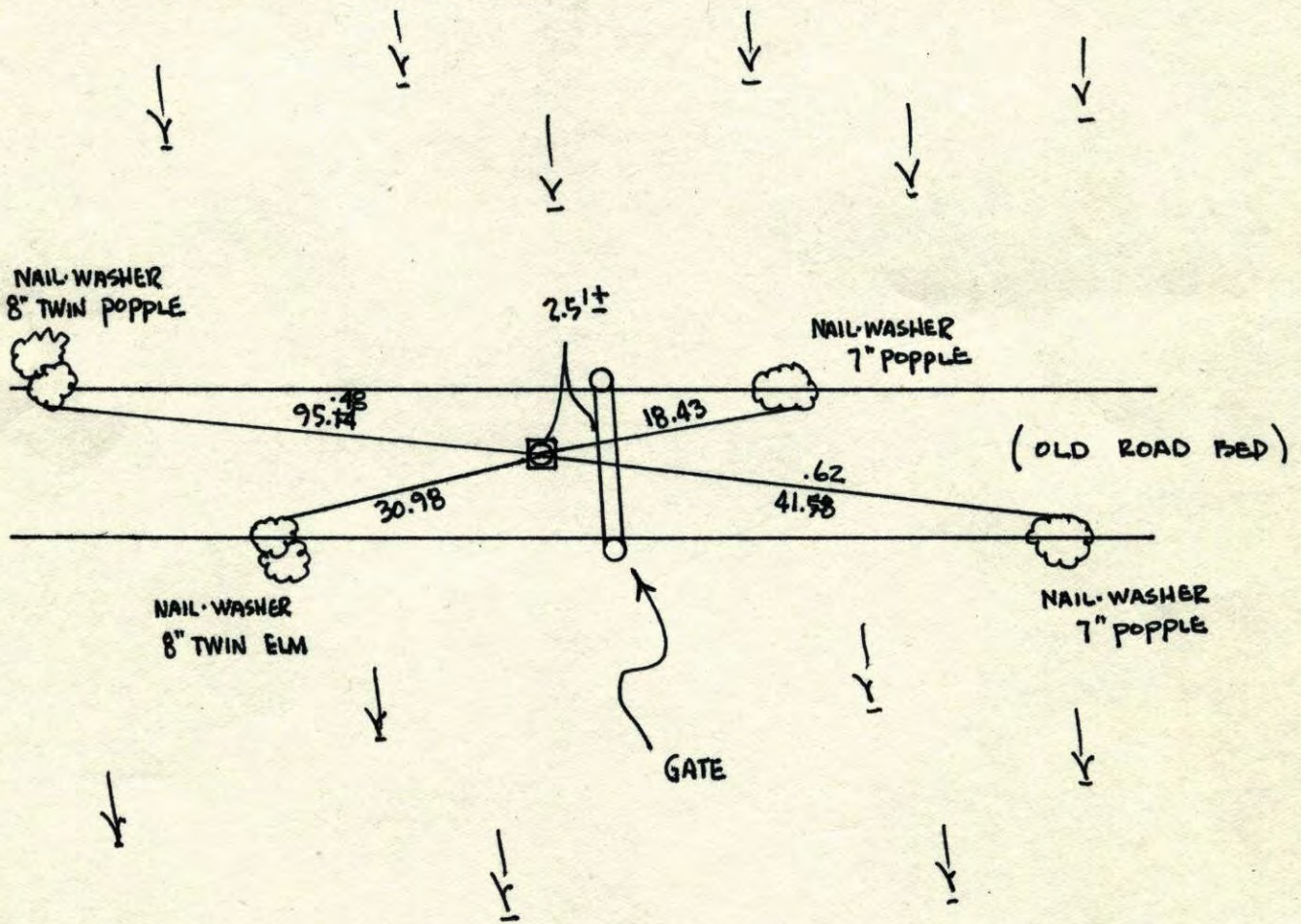
State of Minnesota

NORTHEAST Corner of Sec. 1 Township 32 Range 24

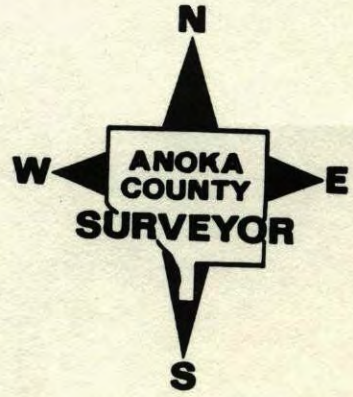
I hereby certify that on the 26TH day of JAN, 19 62, I found the described corner which was evidenced by GRANITE MONUMENT

and I further certify that to perpetuate the location of said corner, I did, at the exact location thereof, place a permanent marker consisting of CAST IRON MONUMENT ON TOP OF GRANITE WITH SIGN & POST ON NORTH SIDE.

which reference or witness monuments are located in the manner following:



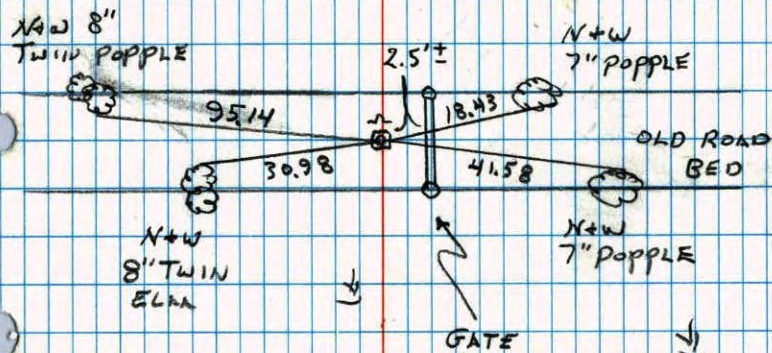
Revised date	Revised date	Revised date
6-4-85		
2-2-88		
7-26-93		
4-23-98		
12-6-00		



NE CORNER SECTION 1 T32R24

REPLACED BROKEN C.I. GRANITE
STILL GOOD. SET NEW C.I. ON
TOP. RETIED. SIGN & POST ON
NORTH SIDE

4-23-98
H. LARSON
B. KLEMM
J. SIMMER



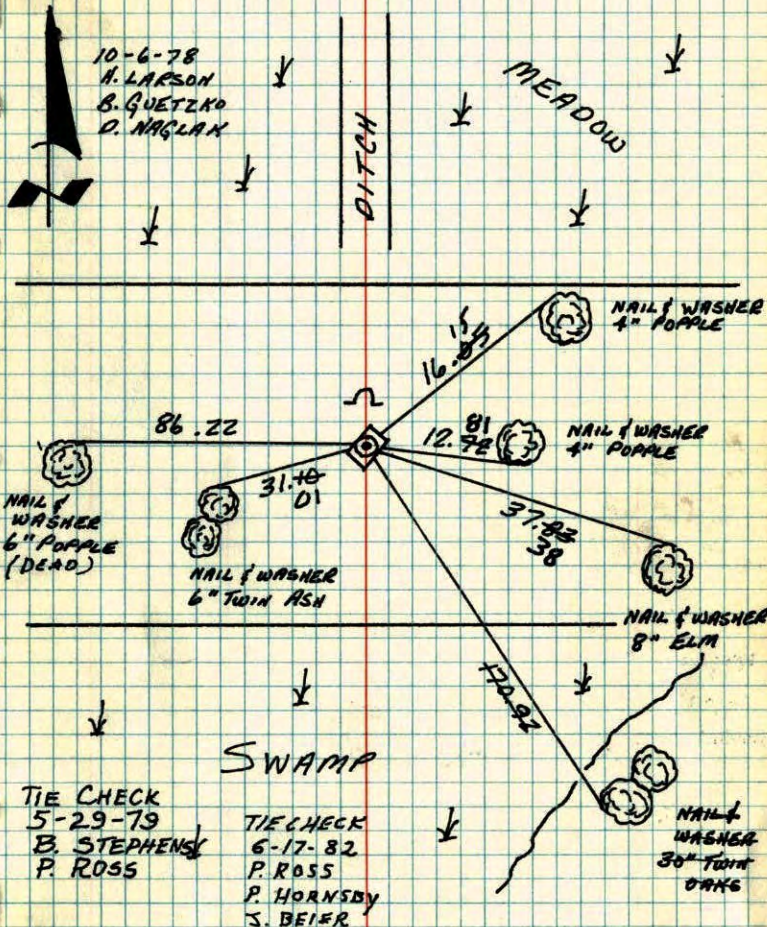
NO. 446

NATIONAL PRINTFAST

N.E. COR. SECTION 1-T32-R24

SET CAST IRON MONUMENT ON TOP OF GRANITE
MONUMENT IN CENTERLINE OF OLD ROAD BED.
STEEL FENCE POST ON NORTH SIDE, UP .2' ±

10-6-78
H. LARSON
B. QUETZKO
D. NAGLAK



NO. 448

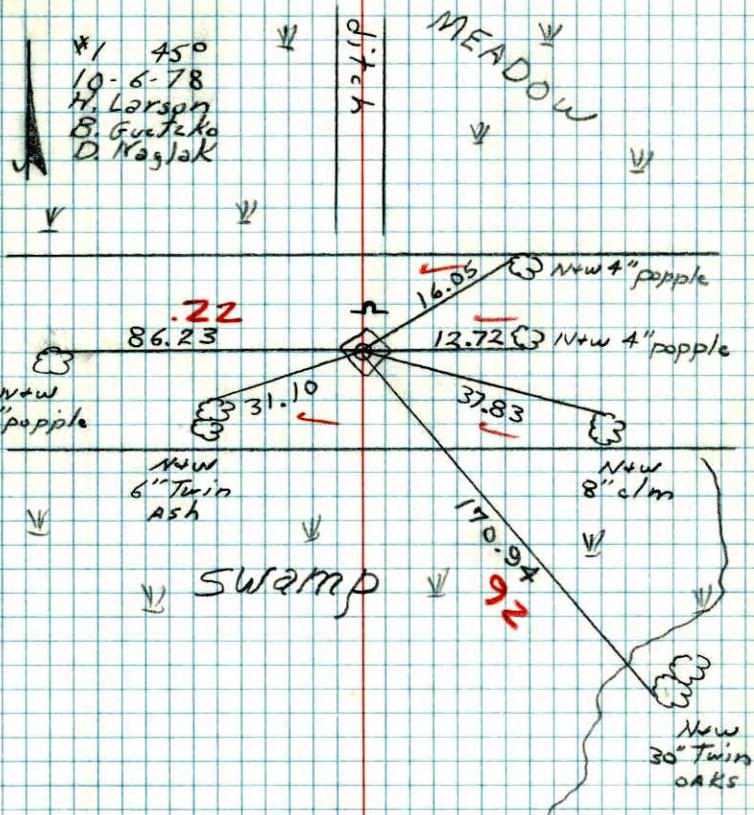
TELETYPE

TEMPERATURE CORRECTED
AND HORIZONTALLY
TAPED MEASUREMENTS

ROLAND W. ANDERSON
COUNTY SURVEYOR
ANOKA COUNTY, MINNESOTA

NE Cor. Section 1 T32 R24

Set cast iron monument on top of granite monument in center line of old road beds steel fence post on North-side up -2



#1 450
10-6-78
H. Larson
B. Gutzko
D. Naglak

NO. 448

TELEPHONE

N.E. Cor. Sec. 1-32-24

found 8" x 30" Granite in E old town road in Middle of Swamp

Granite set in 1875 (see Surveyors record book No. 151, page 1)

Oak Grove East Bethel

Ties checked
Aug. 13, 1964
M.D. Anderson
J. Dunlop
--- New tie

Grow Ham Lakes

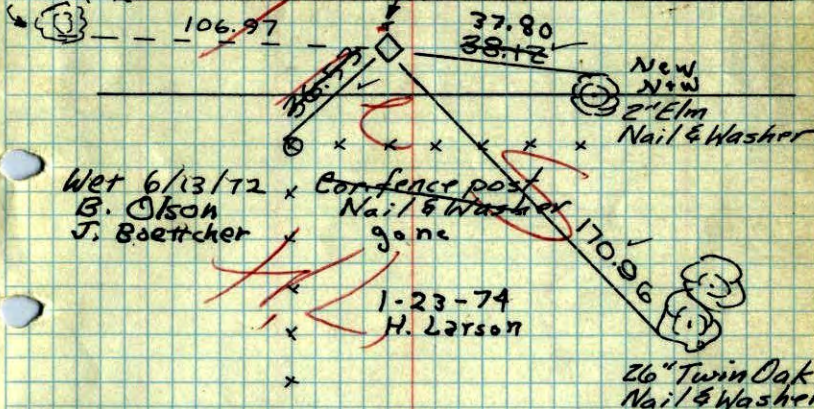
Jan 26, 1962

R.O. Freeman
M.D. Anderson

Wet 7/19/66
7/5/68

Should check in winter

Nail and washer in 6" popal



Wet 6/13/72
B. Olson
J. Boettcher

1-23-74
H. Larson

26" Twin Oak Nail & Washer

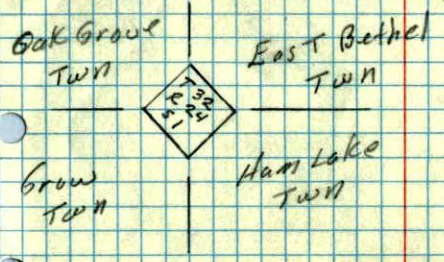
TEMPERATURE CORRECTED
AND HORIZONTALLY
TAPED MEASUREMENTS

Ties ok. Granite
under ice 1-17-78
H. Larson, B. Gutzko
J. Boettcher

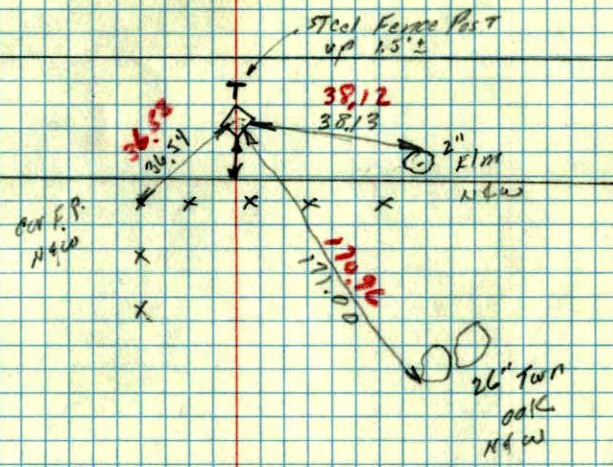
ROLAND W. ANDERSON
COUNTY SURVEYOR
ANOKA COUNTY, MINNESOTA

26 Jan 1962
 Freeman & Anderson
 + 31° very windy

NE Cor Sect- 32-24 Grow Twn-
 Found 8"x8"x30 Granite 2nd Town Road
 in middle of Swamp. Set 1875.



Granite was dug up
 with D-7 cut from
 County Hwy Dept
 set Iron fence post
 on N face - up 1.5'



Temp OK
 for 31°