

# CERTIFICATE OF LOCATION OF GOVERNMENT CORNER

County of Anoka

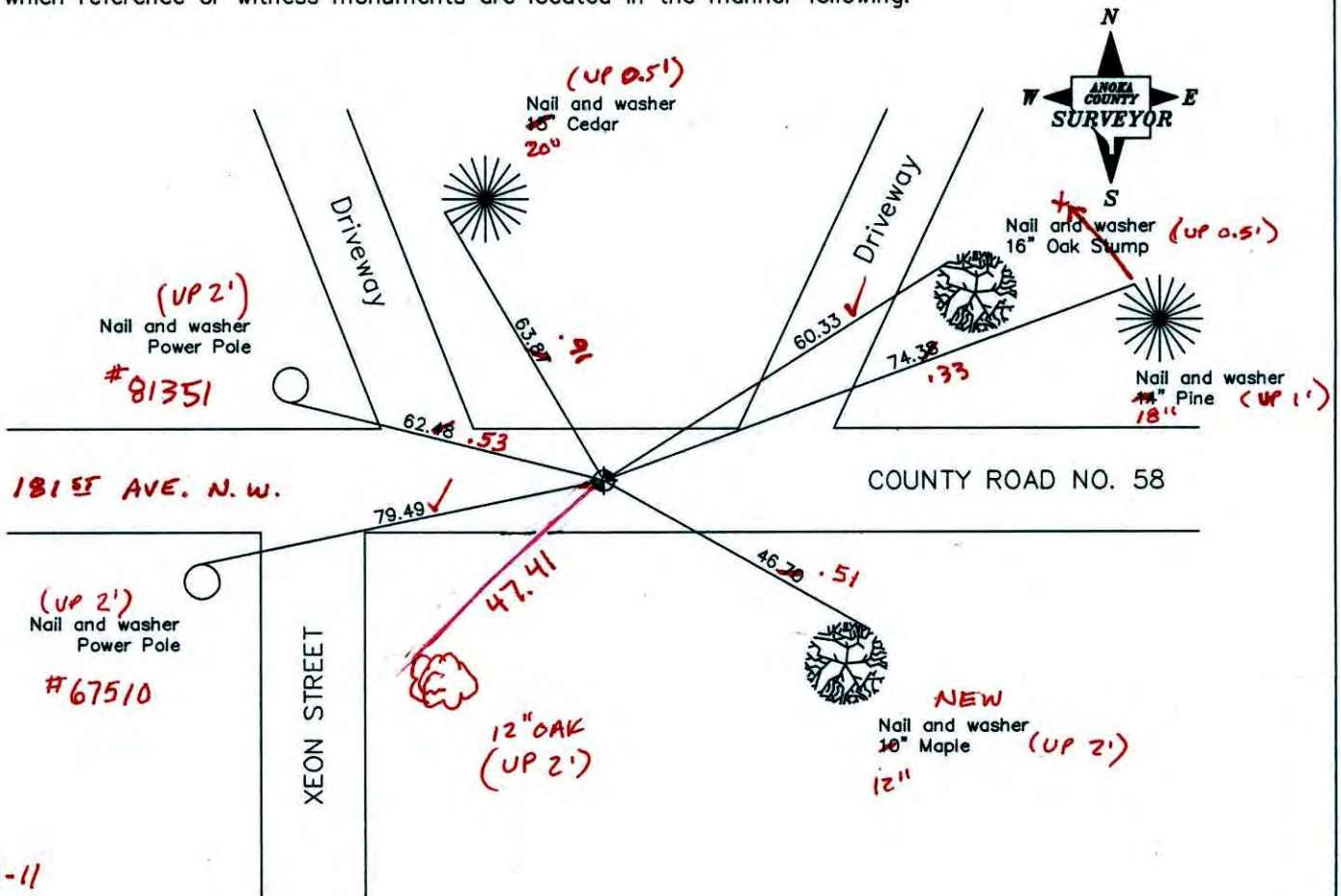
State of Minnesota

North 1/4 Corner of Sec. 2 Township 32 Range 24

I hereby certify that on the 19th day of September, 1962, I found the described corner which was evidenced by area resurvey

and I further certify that to perpetuate the location of said corner, I did, at the exact location thereof, place a permanent marker consisting of a cast iron monument ✓

which reference or witness monuments are located in the manner following:



1-18-11  
BK-55  
T/T Revised date

8/1/88
7/14/93
7/25/00

N.A.D. 1983 Co-ordinates

County Project Co-ordinates	
Northing	<u>195838.7924</u>
Easting	<u>492439.9737</u>

State Plane Co-ordinates	
Y	_____
X	_____

Date 7/25/00



# CERTIFICATE OF LOCATION OF GOVERNMENT CORNER

County of Anoka

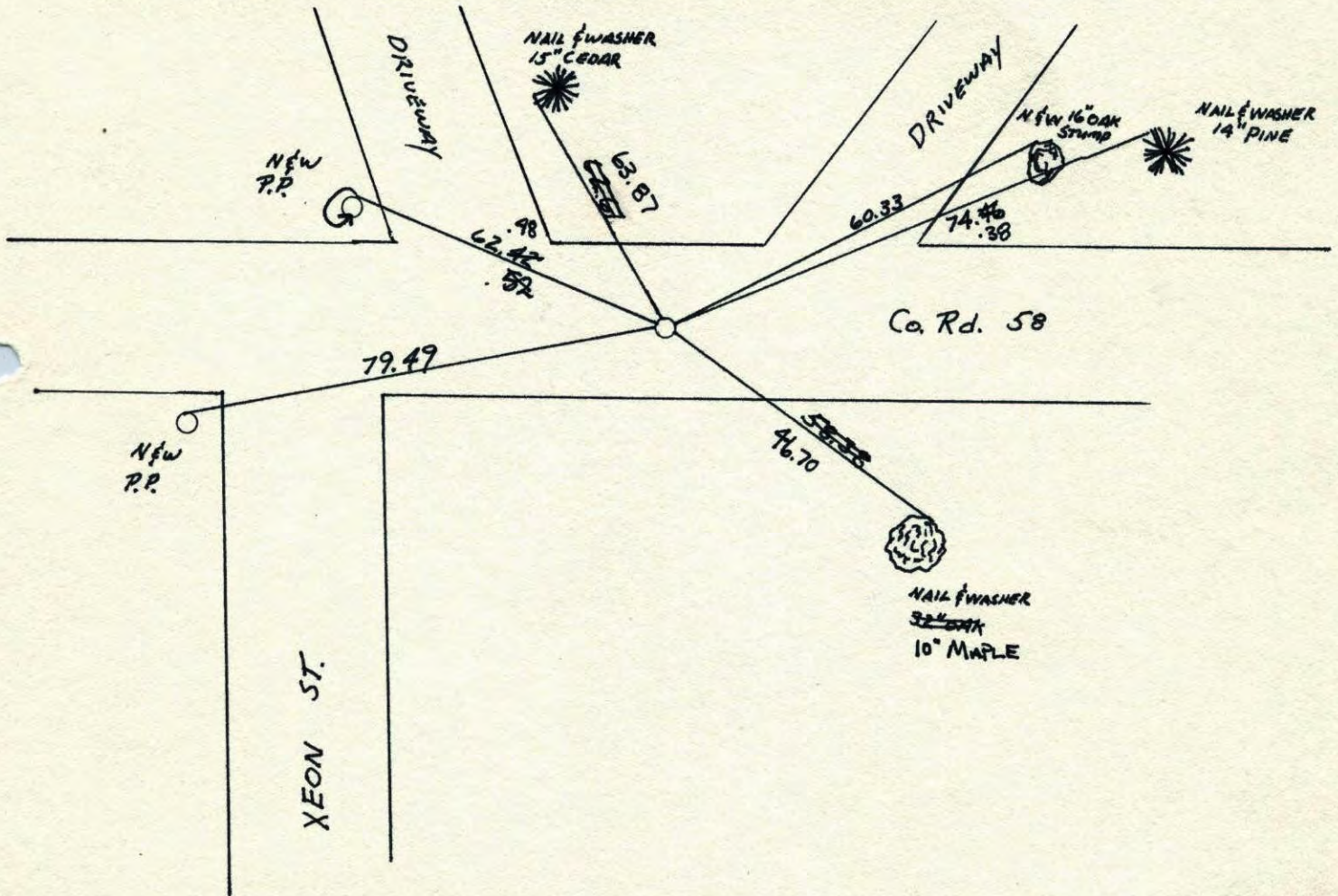
State of Minnesota

NORTH 1/4 Corner of Sec. 2 Township 32 Range 24

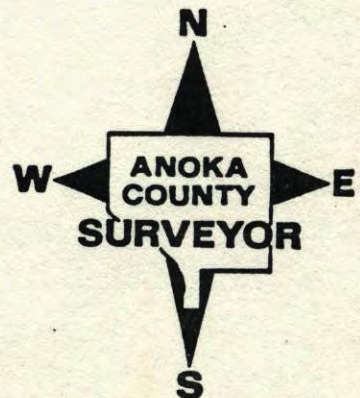
I hereby certify that on the 19<sup>TH</sup> day of SEPTEMBER, 1962, I found the described corner which was evidenced by AREA RESURVEY

and I further certify that to perpetuate the location of said corner, I did, at the exact location thereof, place a permanent marker consisting of CAST IRON MONUMENT

which reference or witness monuments are located in the manner following:



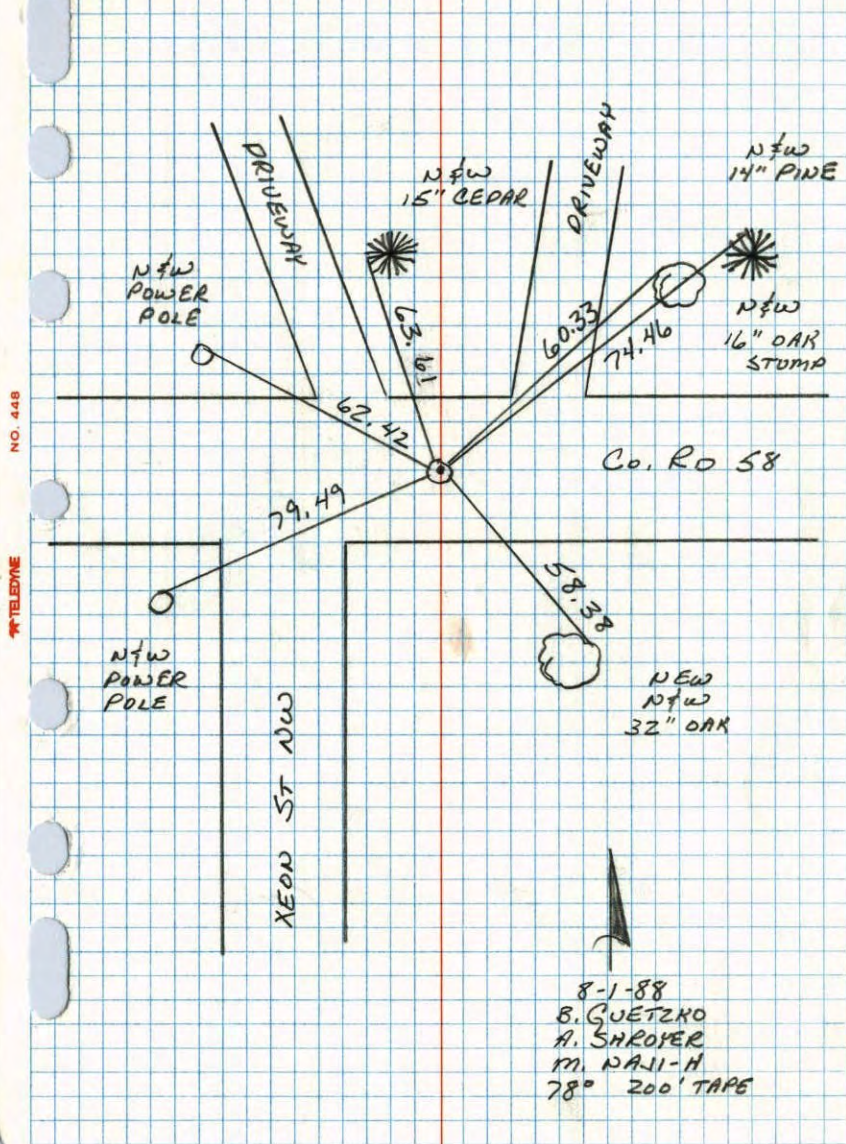
Revised date	Revised date	Revised date
5-30-85		
8-1-88		
7-14-93		
7-25-00		





N<sup>1</sup>/<sub>4</sub> CORNER SEC 2 T32 R24

RETIED CAST IRON MONUMENT.



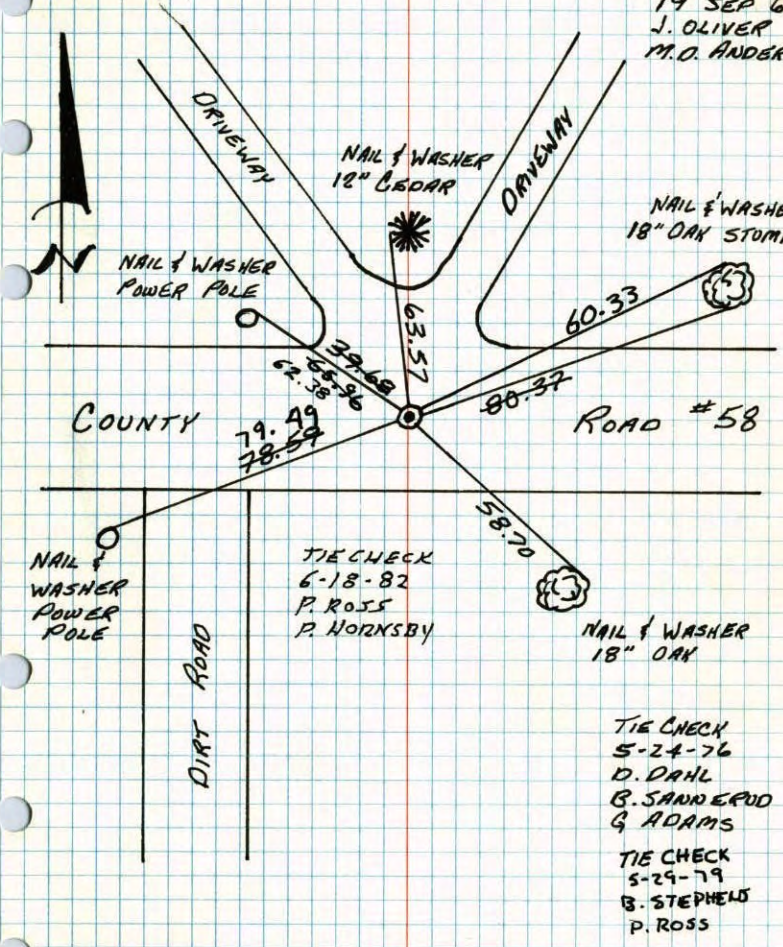
NO. 448 TELETYPE

8-1-88  
B. GUETZKO  
A. SHROYER  
M. PAI-H  
78° 200' TAPE

N<sup>1</sup>/<sub>4</sub> COR. SEC. 2 - T32 - R.24

SET CAST IRON MONUMENT FROM AREA RESURVEY  
CAST IRON MONUMENT 7' SOUTH OF E ROAD

19 SEP 62  
J. OLIVER  
M.O. ANDERSON



TIE CHECK  
5-24-76  
D. DAHL  
B. SANDERUD  
& ADAMS  
TIE CHECK  
5-29-79  
B. STEPHENS  
P. ROSS

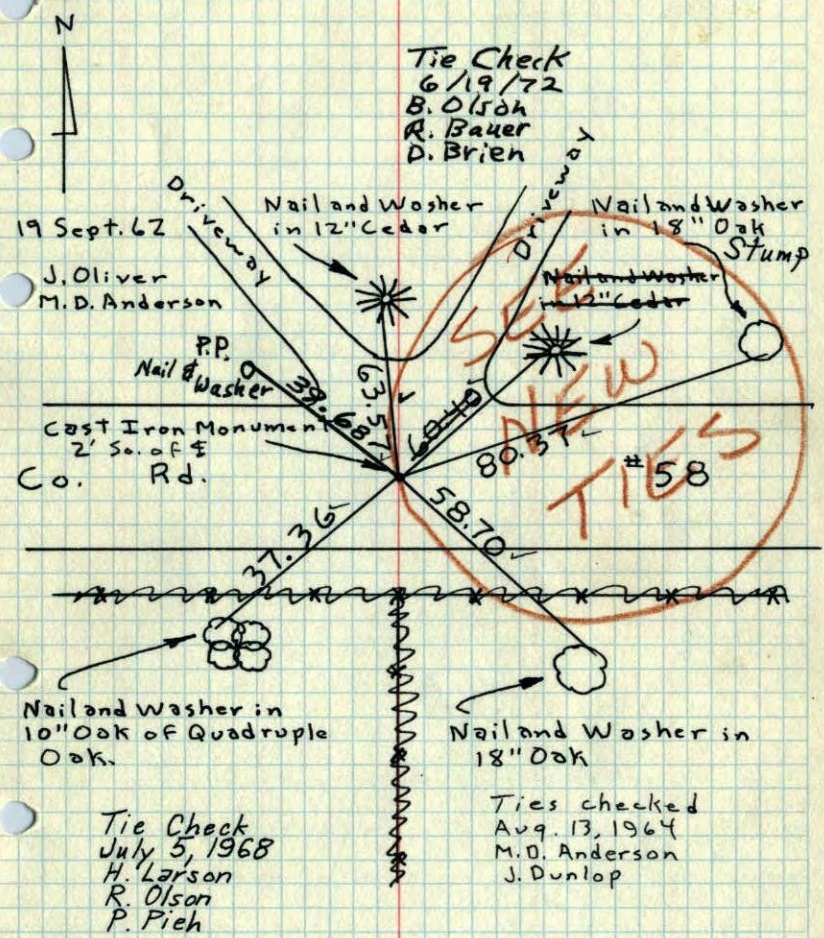
TEMPERATURE CORRECTED  
AND HORIZONTALLY  
TAPED MEASUREMENTS

ROLAND W. ANDERSON  
COUNTY SURVEYOR  
ANOKA COUNTY, MINNESOTA



# N 1/4 Cor. Sec. 2, T32, R24

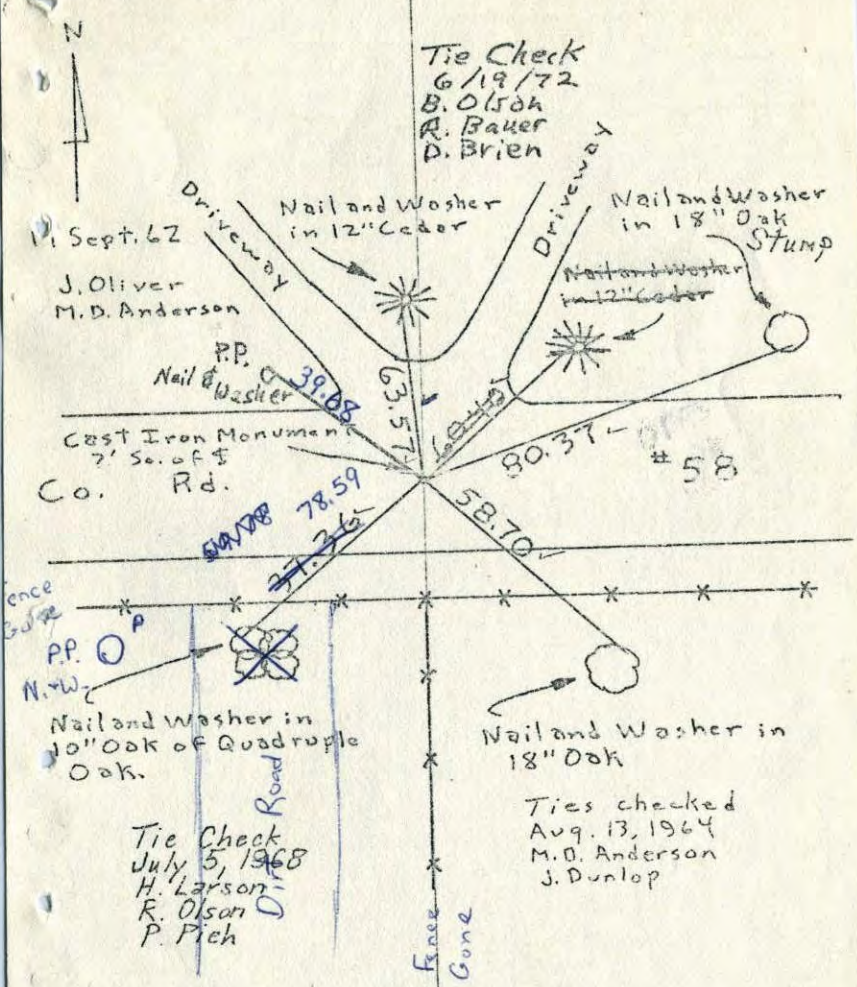
## Set Cast Iron Monument From Resurvey



TEMPERATURE CORRECTED ROLAND W. ANDERSON  
AND HORIZONTALLY COUNTY SURVEYOR  
TAPED MEASUREMENTS ANOKA COUNTY, MINNESOTA

# N 1/4 Cor. Sec. 2, T32, R24

## Set Cast Iron Monument From Resurvey



TEMPERATURE CORRECTED ROLAND W. ANDERSON  
AND HORIZONTALLY COUNTY SURVEYOR  
TAPED MEASUREMENTS ANOKA COUNTY, MINNESOTA



N 1/4 Cor. Sec. 2, T 32, R 24

Set Cast Iron Monument from Resurvey

