

# CERTIFICATE OF LOCATION OF GOVERNMENT CORNER

County of Anoka

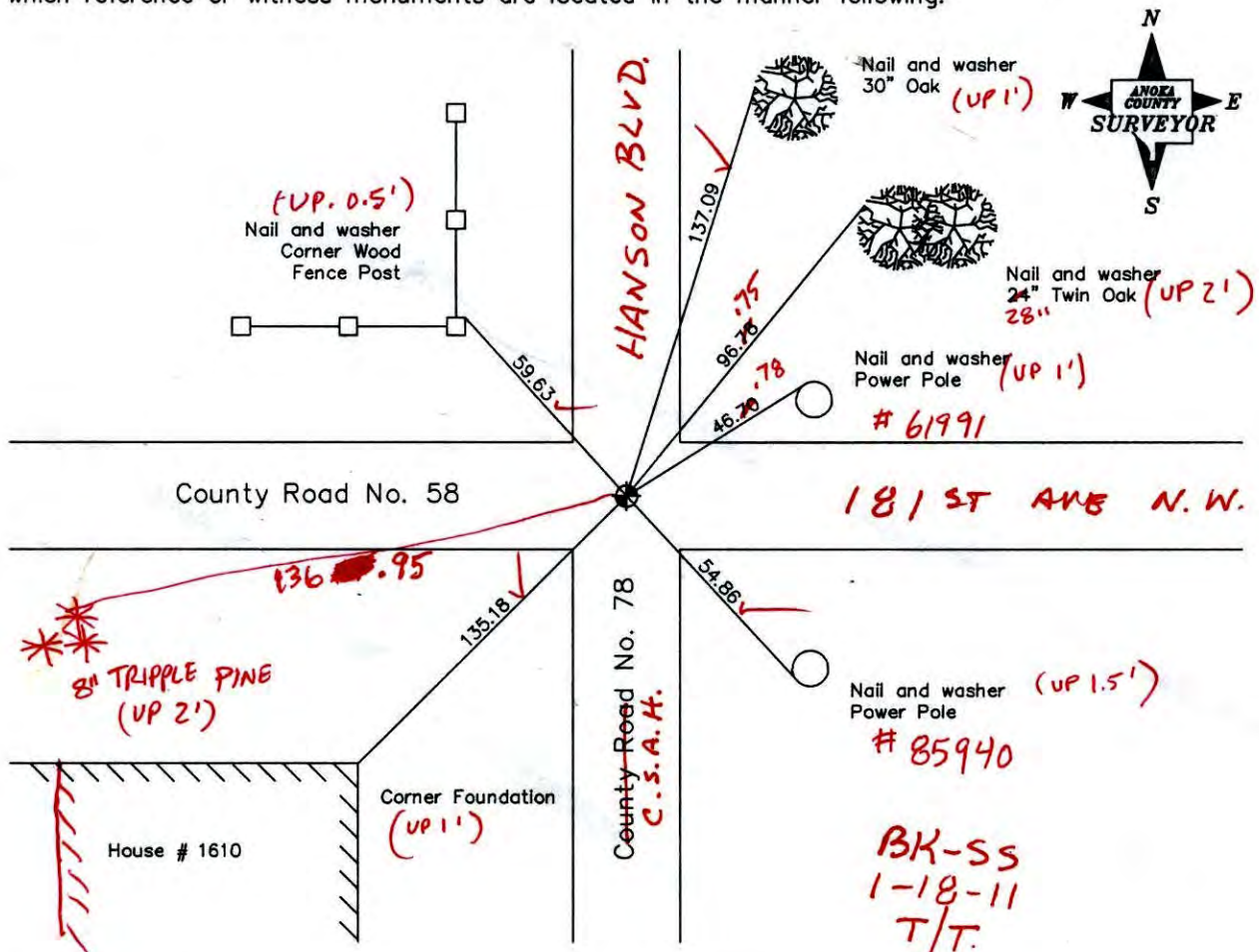
State of Minnesota

Northwest Corner of Sec. 2 Township 32 Range 24

I hereby certify that on the 19th day of September, 1962, I found the described corner which was evidenced by area resurvey

and I further certify that to perpetuate the location of said corner, I did, at the exact location thereof, place a permanent marker consisting of a cast iron monument

which reference or witness monuments are located in the manner following:



Revised date

8/1/88
7/14/93
7/25/00

N.A.D. 1983 Co-ordinates

County Project Co-ordinates
Northing <u>195825.3202</u>
Easting <u>489813.2327</u>

State Plane Co-ordinates
Y _____
X _____

Date 7/25/00

# CERTIFICATE OF LOCATION OF GOVERNMENT CORNER

County of Anoka

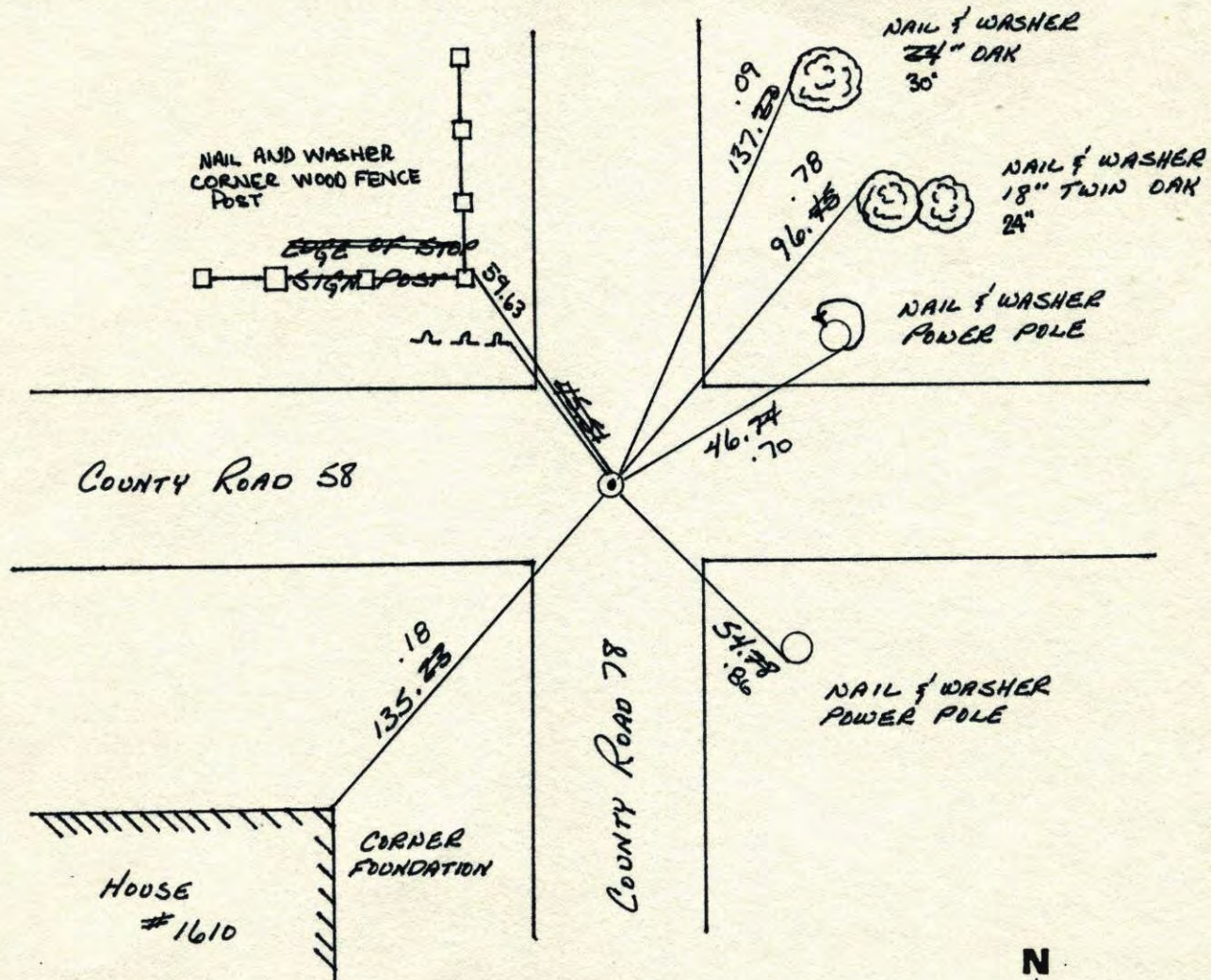
State of Minnesota

NORTHWEST Corner of Sec. 2 Township 32 Range 24

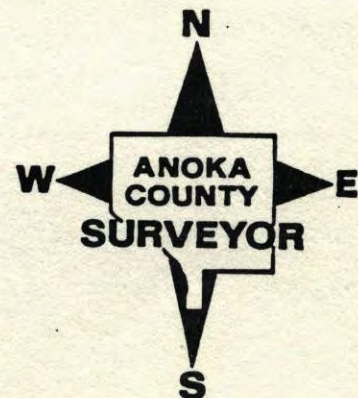
I hereby certify that on the 19 day of SEPTEMBER, 1962, I found the described corner which was evidenced by AREA RESURVEY

and I further certify that to perpetuate the location of said corner, I did, at the exact location thereof, place a permanent marker consisting of CAST IRON MONUMENT

which reference or witness monuments are located in the manner following:

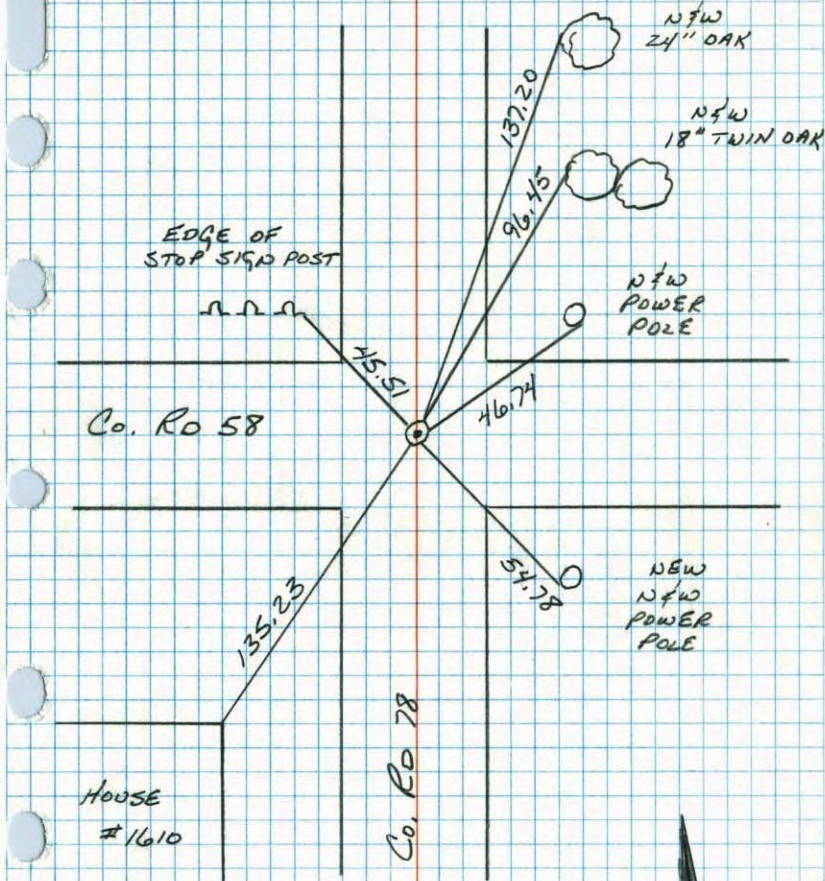


Revised date	Revised date	Revised date
5-30-85		
8-1-88		
7-14-93		
7-25-00		



N.W. CORNER SEC 2 T32 R24

RETIED CAST IRON MONUMENT.



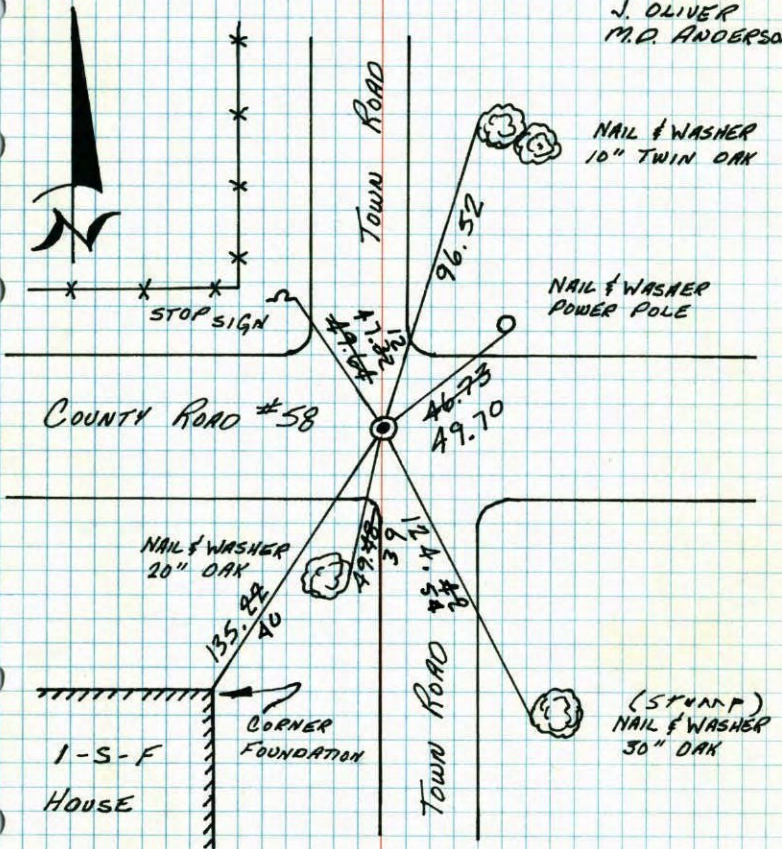
NO. 448 TELEPHONE

8-1-88  
B. GUETZKO  
A. SHROYER  
M. WALKER  
78° 200' TAPE

NW COR. SEC. 2 - T32 - R24

SET CAST IRON MONUMENT FROM AREA RESURVEY

19 SEP 62  
J. OLIVER  
M.D. ANDERSON



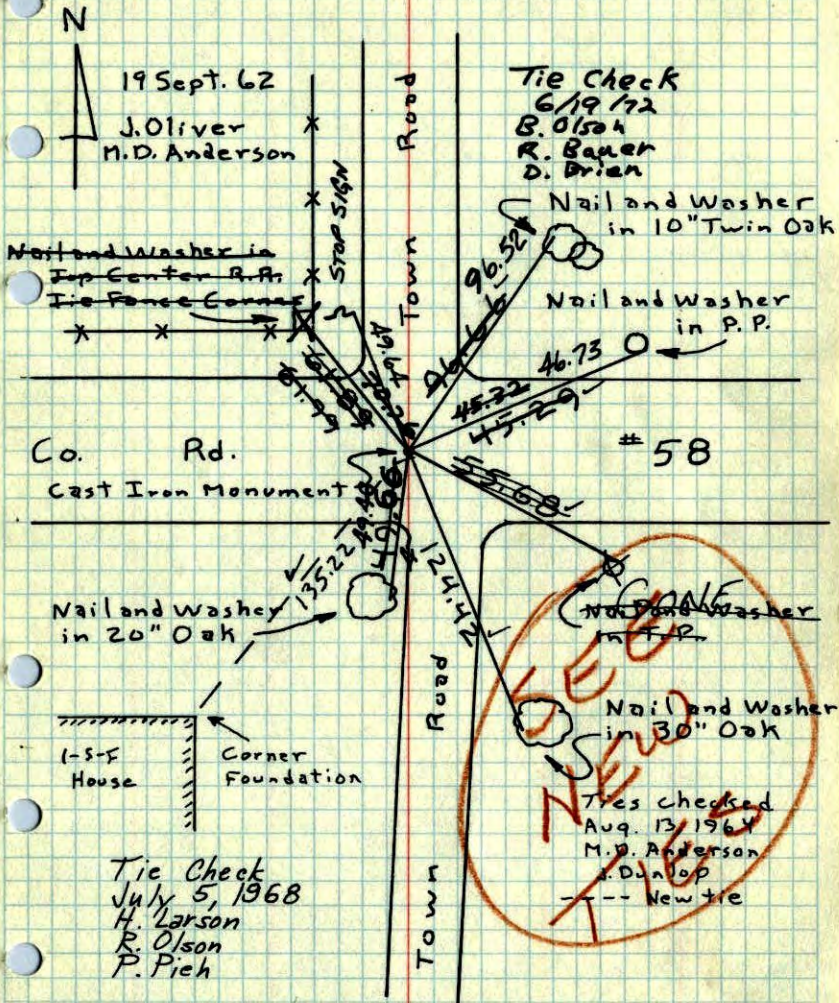
TIE CHECK 5-24-76 D. DAHL B. SAMNEROD G. ADAMS	TIE CHECK 5-29-79 B. STEPHENS P. ROSS	TIE CHECK 6-17-82 P. ROSS P. HORNBY J. BEIER
--	--	--

TEMPERATURE CORRECTED  
AND HORIZONTALLY  
TAPED MEASUREMENTS

ROLAND W. ANDERSON  
COUNTY SURVEYOR  
ANOKA COUNTY, MINNESOTA

# NW Cor. Sec. 2, T32, R24

## Set Cast Iron Monument From Resurvey

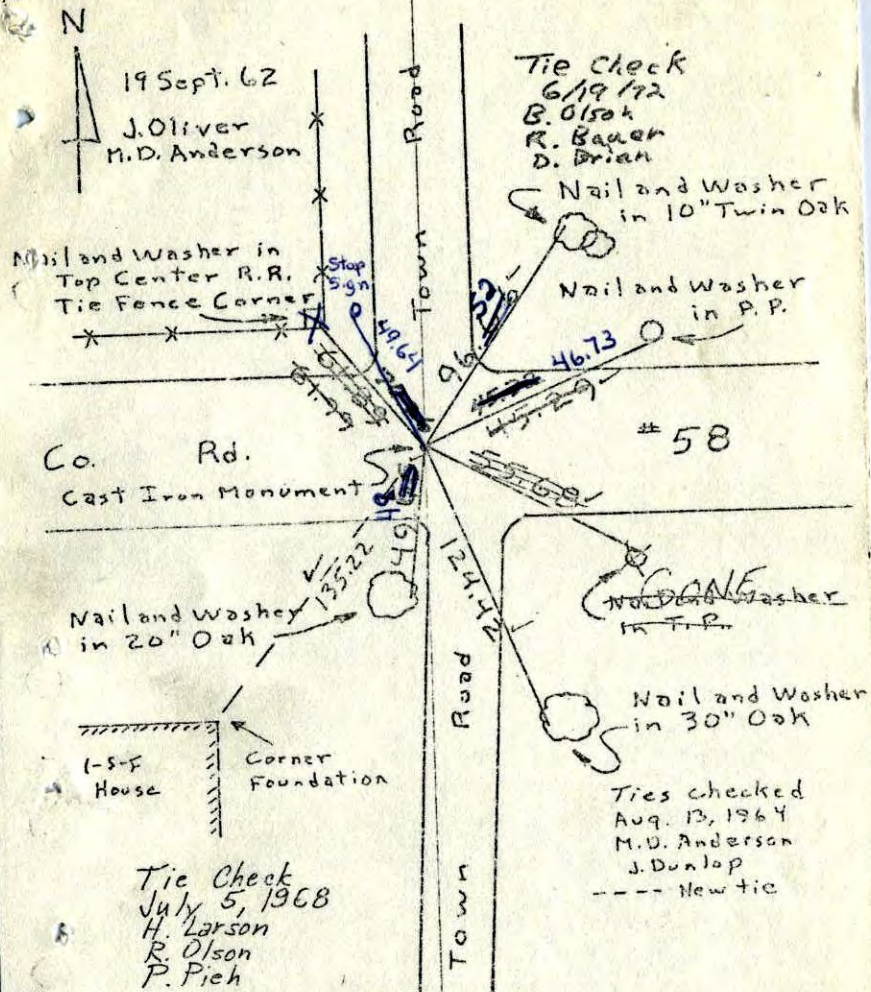


TEMPERATURE CORRECTED  
AND HORIZONTALLY  
TAPED MEASUREMENTS

ROLAND W. ANDERSON  
COUNTY SURVEYOR  
ANOKA COUNTY, MINNESOTA

# NW Cor. Sec. 2, T32, R24

## Set Cast Iron Monument From Resurvey

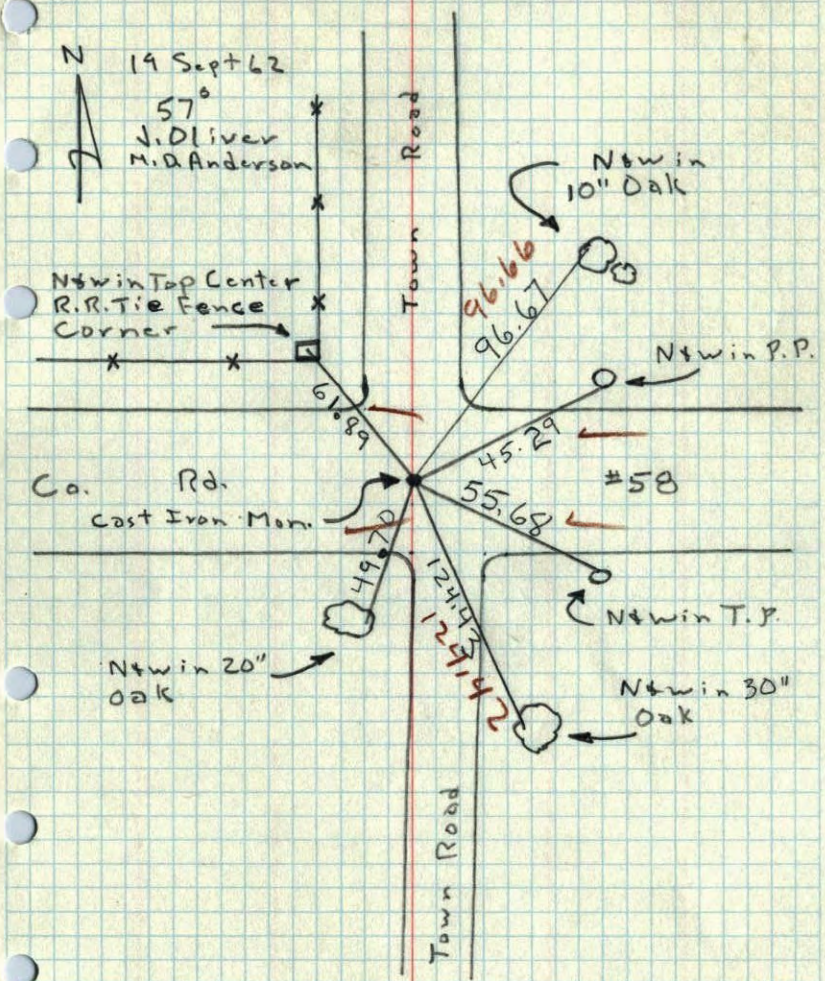


TEMPERATURE CORRECTED  
AND HORIZONTALLY  
TAPED MEASUREMENTS

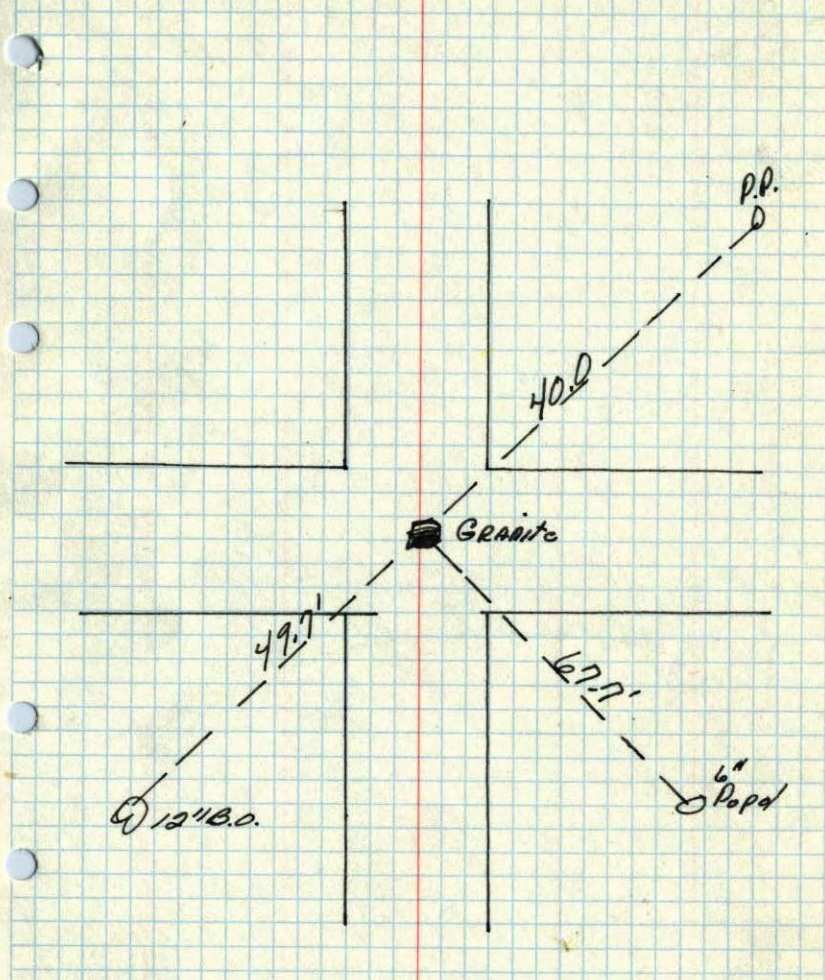
ROLAND W. ANDERSON  
COUNTY SURVEYOR  
ANOKA COUNTY, MINNESOTA

Nw Cor. Sec. 2, T32, R24

Set Cast Iron Monument From Resurvey



NW  
SE corner of Sec. 34 T32 R24



Anoka Co Hwy Dept.