

CERTIFICATE OF LOCATION OF GOVERNMENT CORNER

County of Anoka

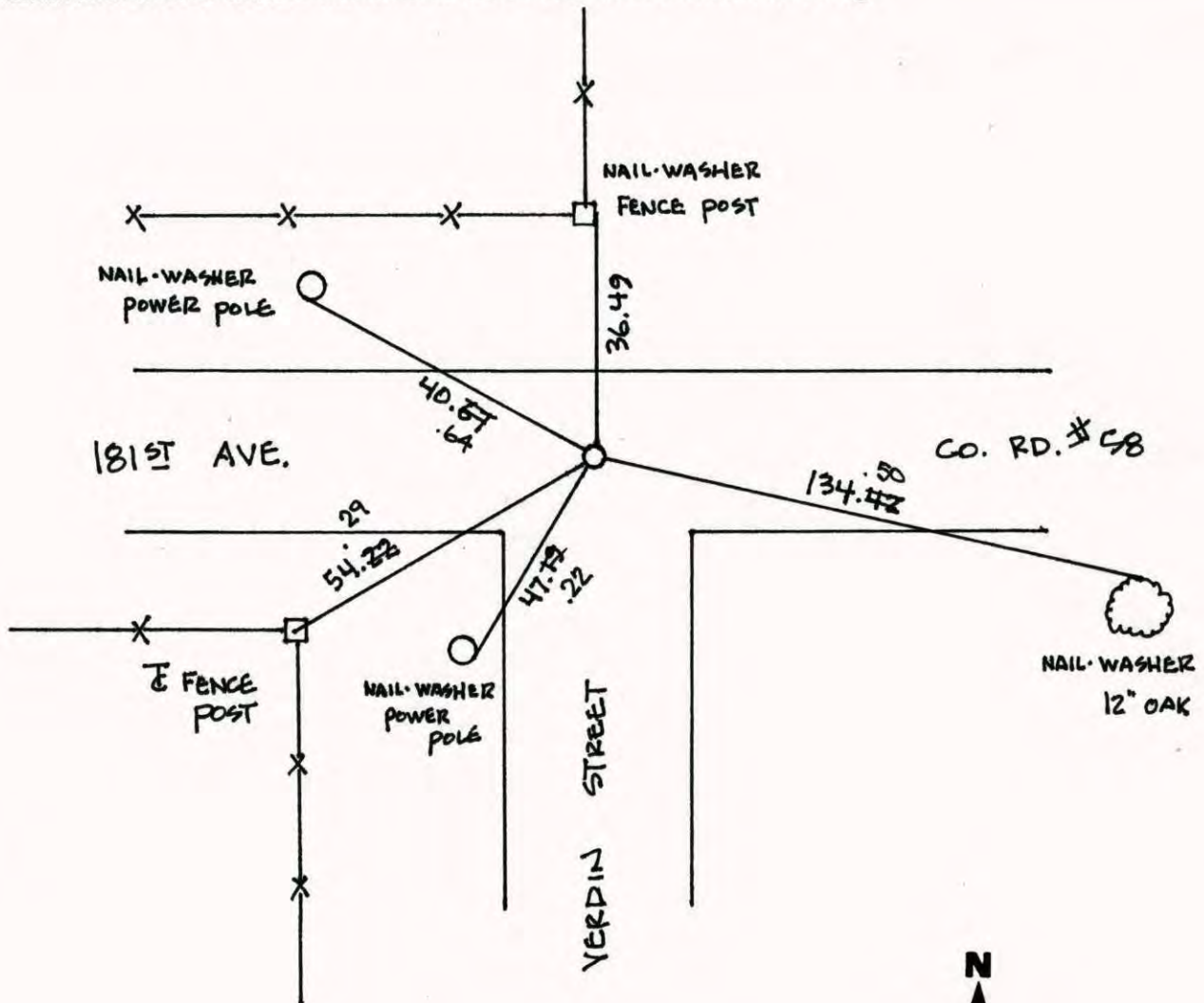
State of Minnesota

NORTHEAST Corner of Sec. 4 Township 32 Range 24

I hereby certify that on the 6TH day of JULY, 19 60, I found the described corner which was evidenced by GRANITE MONUMENT

and I further certify that to perpetuate the location of said corner, I did, at the exact location thereof, place a permanent marker consisting of CAST IRON MONUMENT ON TOP OF GRANITE MONUMENT

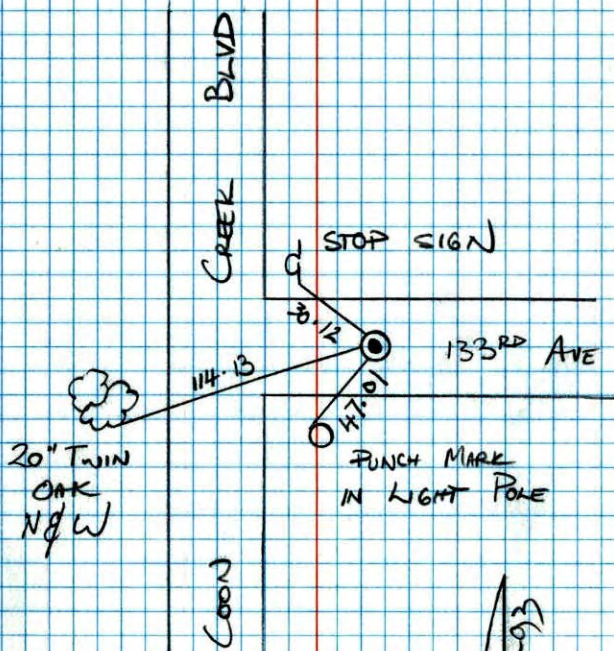
which reference or witness monuments are located in the manner following:



Revised date	Revised date	Revised date
7-3-68		
7-16-75		
7-17-78		
7-22-81		
7-15-87		
5-11-99		
7-25-00		



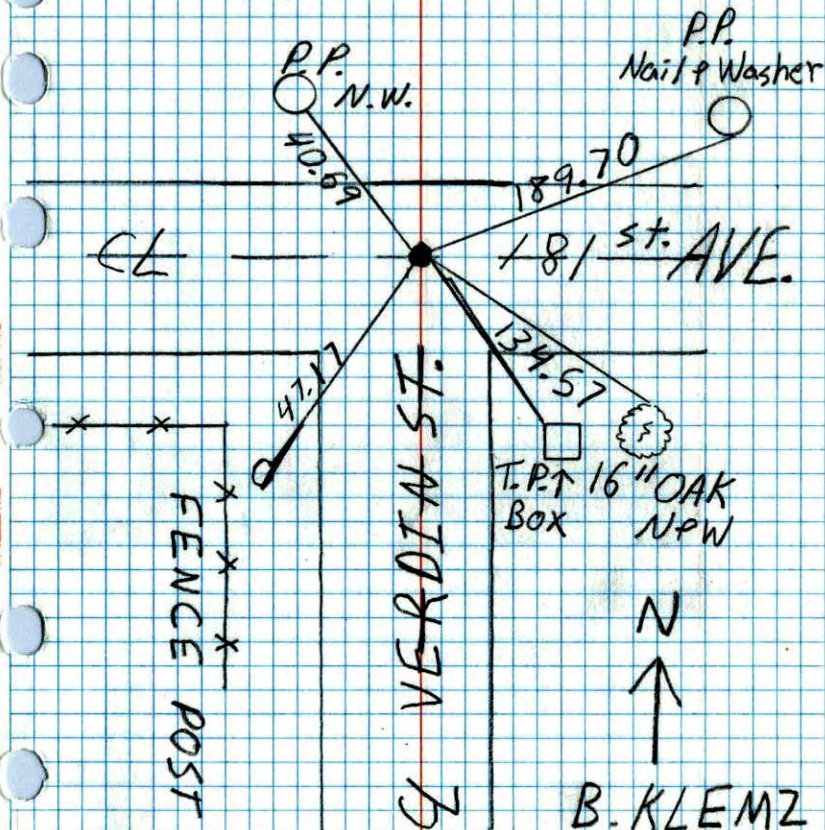
NORTH EAST 1/4 SEC 4 T32 R24
 32 24
 RETIE CAST IRON MONUMENT



JAMIE ANDERSON
 JOSH ANDERSON

7-21-93

NE CORNER SEC 4 T32 R24
 RETIED CAST IRON MON.
 C.I. ON TOP OF GRANITE



B. KLEMZ
 M. STUART
 1/28/92

Tide ✓
7-16-75

D. Dahl
B. Sannerud
G. Adams

90°
Tape #10

NE
SE Corn. Sec. 33 ~~T33 R24~~

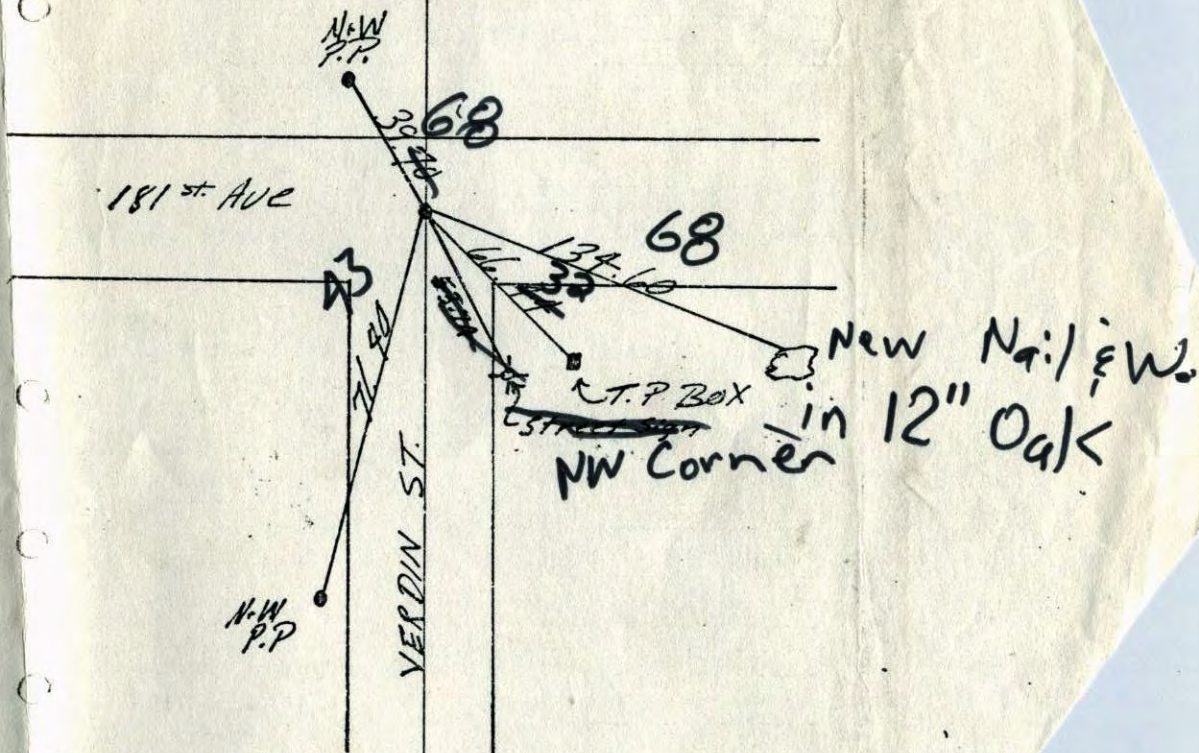
Granite Mon. Down 1.3'
I.P. on N. Side

Placed Cast Iron Mon. Flush on
Top of GRANITE PK's 2.0' N+E

RAISED C.I.
7-26-77

AND SA 129

July 3 1968
H. LARSON
D. OLSON
P. TREN



TEMPERATURE CORRECTED
AND HORIZONTALLY
TAPED MEASUREMENTS

ROLAND W. ANDERSON
COUNTY SURVEYOR
ANOKA COUNTY, MINNESOTA

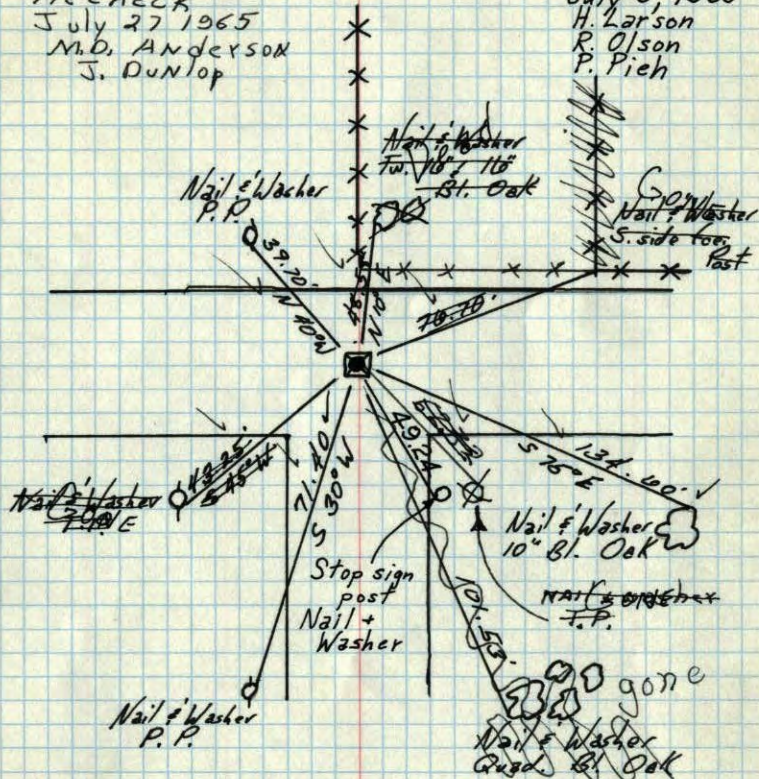
AND 5A 89

SE CORN. Sec. 33-T33-R24

Granite Mon. down 1.3'
I.P. on N. Side
Placed Cast Iron Monument flush on top of
Granite. PK's 2.00' North + East.

Tiecheck
July 27 1965
M.D. ANDERSON
J. Dunlop

July 3, 1968
H. Larson
P. Olson
P. Pieh



TEMPERATURE CORRECTED
AND HORIZONTALLY
TAPED MEASUREMENTS

July 6, 1960
R. W. Anderson
Dick Giddings Assist.

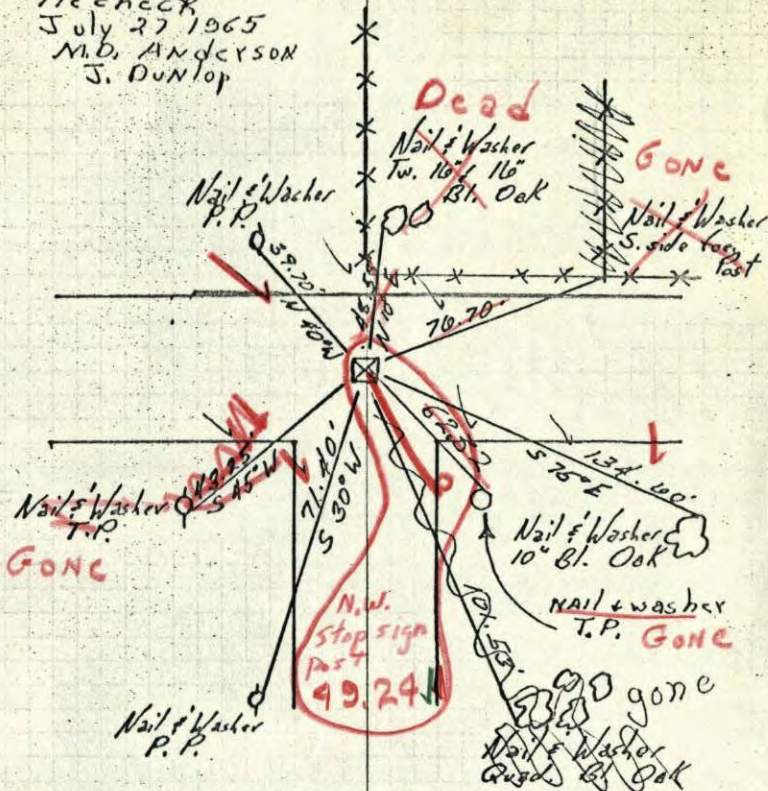
ROLAND W. ANDERSON
COUNTY SURVEYOR
ANOKA COUNTY, MINNESOTA

NE AND 5A 89

SE CORN. Sec. 33-T33-R24

Granite Mon. down 1.3'
I.P. on N. Side

Tiecheck
July 27 1965
M.D. ANDERSON
J. Dunlop



TEMPERATURE CORRECTED
AND HORIZONTALLY
TAPED MEASUREMENTS

July 6, 1960
R. W. Anderson
Dick Giddings Assist.

ROLAND W. ANDERSON
COUNTY SURVEYOR
ANOKA COUNTY, MINNESOTA

Placed C.I. Flush
on Top of Granite
P.K. 2' N.E.

7 689
July 3, 68
H. Larson
R. Olson
P. Pieh

NE 4-32-24

AND 5A-

61

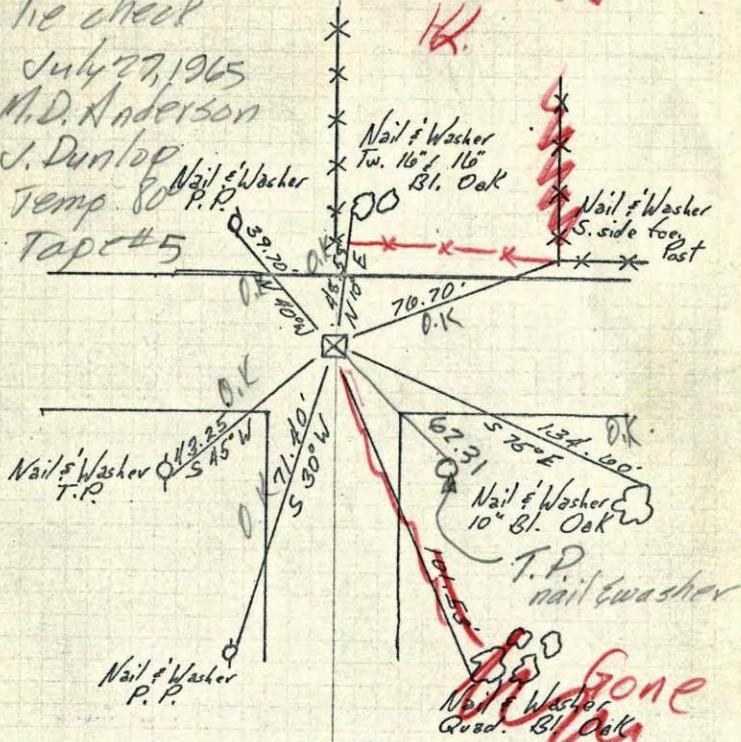
SE CORN. Sec 33-T33-R24

Granite Mon. down 1.3'
I.P. on N. Side

Tie check

- July 27, 1965
- M.D. Anderson
- J. Dunlop
- Temp. 80° P.P.
- Tap #5

Entered
H.



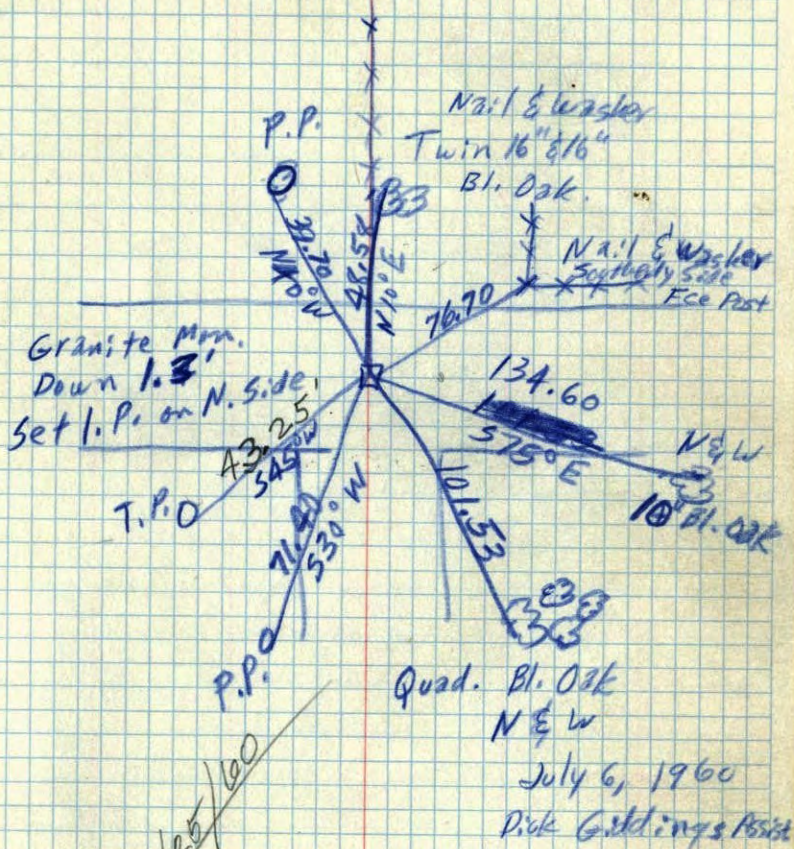
TEMPERATURE CORRECTED
AND HORIZONTALLY
TAPED MEASUREMENTS

July 16, 1960
R. W. Anderson
Dick Giddings Assist.

ROLAND W. ANDERSON
COUNTY SURVEYOR
ANOKA COUNTY, MINNESOTA

5A

NE. Corn. Sec. 4, T 32, R 24

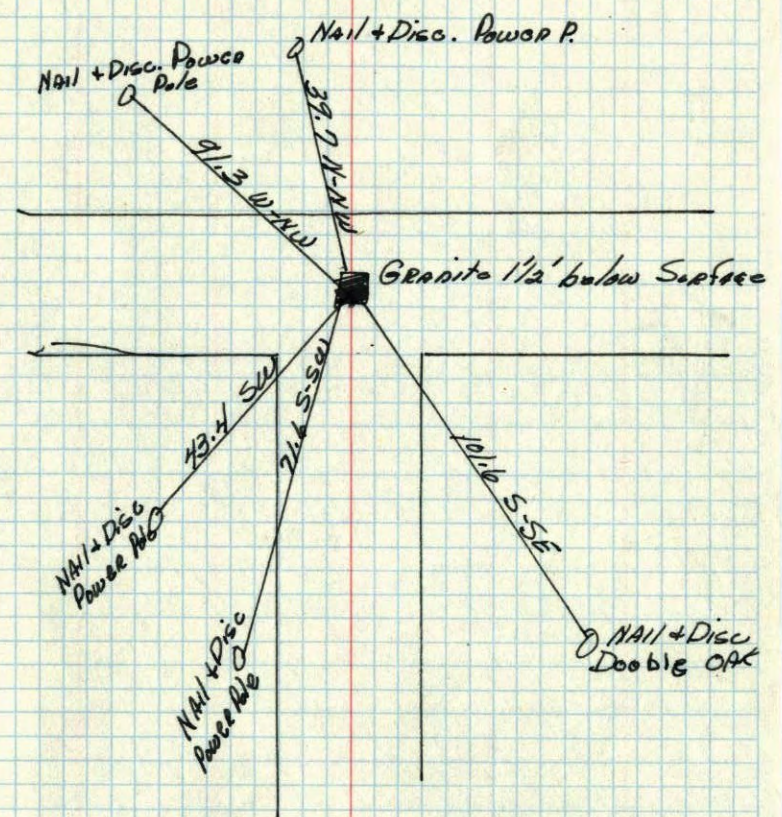


Quad. Bl. Oak
N & W

July 6, 1960
Dick Giddings Assist.

5A 33 ✓

NE
SE corner of Sec. 33 + 33-24
4-32-24



Anoka Co. Hwy. Dept.

SE of Sec. 33, 33-24 5A
NE 1/4 4-32-24

Granite - Down 1/2'
10-14-54
Co. Hwy. Dept.

