

# CERTIFICATE OF LOCATION OF GOVERNMENT CORNER

County of Anoka

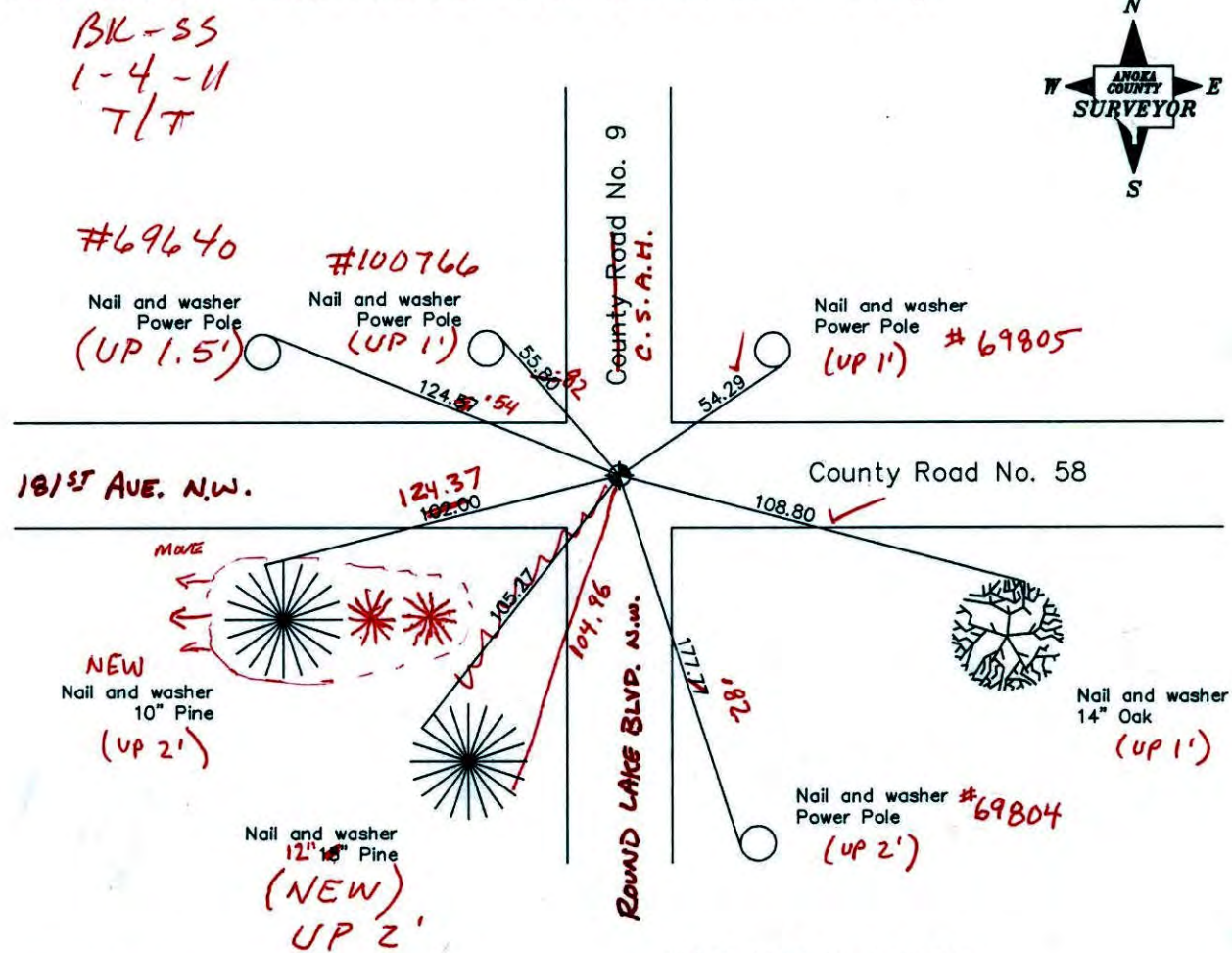
State of Minnesota

Northwest Corner of Sec. 4 Township 32 Range 24

I hereby certify that on the 6th day of July, 1960, I found the described corner which was evidenced by a sandstone monument

and I further certify that to perpetuate the location of said corner, I did, at the exact location thereof, place a permanent marker consisting of a cast iron monument ✓ (FLUSH)

which reference or witness monuments are located in the manner following:



BK-SS  
1-4-11  
7/7



Revised date

7/29/88
4/14/93
8/7/00

N.A.D. 1983 Co-ordinates

County Project Co-ordinates	State Plane Co-ordinates
Northing <u>195922.9294</u>	Y _____
Easting <u>479298.5804</u>	X _____

Date 8/7/00

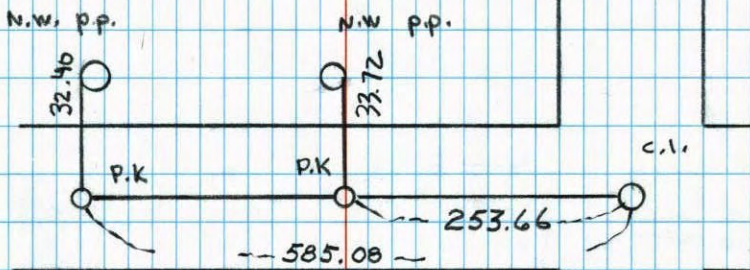


CONSTRUCTION TIE

NORTHWEST COR. SEC 4 T32 R 24

RETIED @ PULLED CAST IRON  
FOR CONST.

7-19-61  
J. SIMMER  
B. KLEMM



NO. 446

NATIONAL PRINTFAST

(CO. RD. # 58)

CO. RD. # 9



# CERTIFICATE OF LOCATION OF GOVERNMENT CORNER

County of Anoka

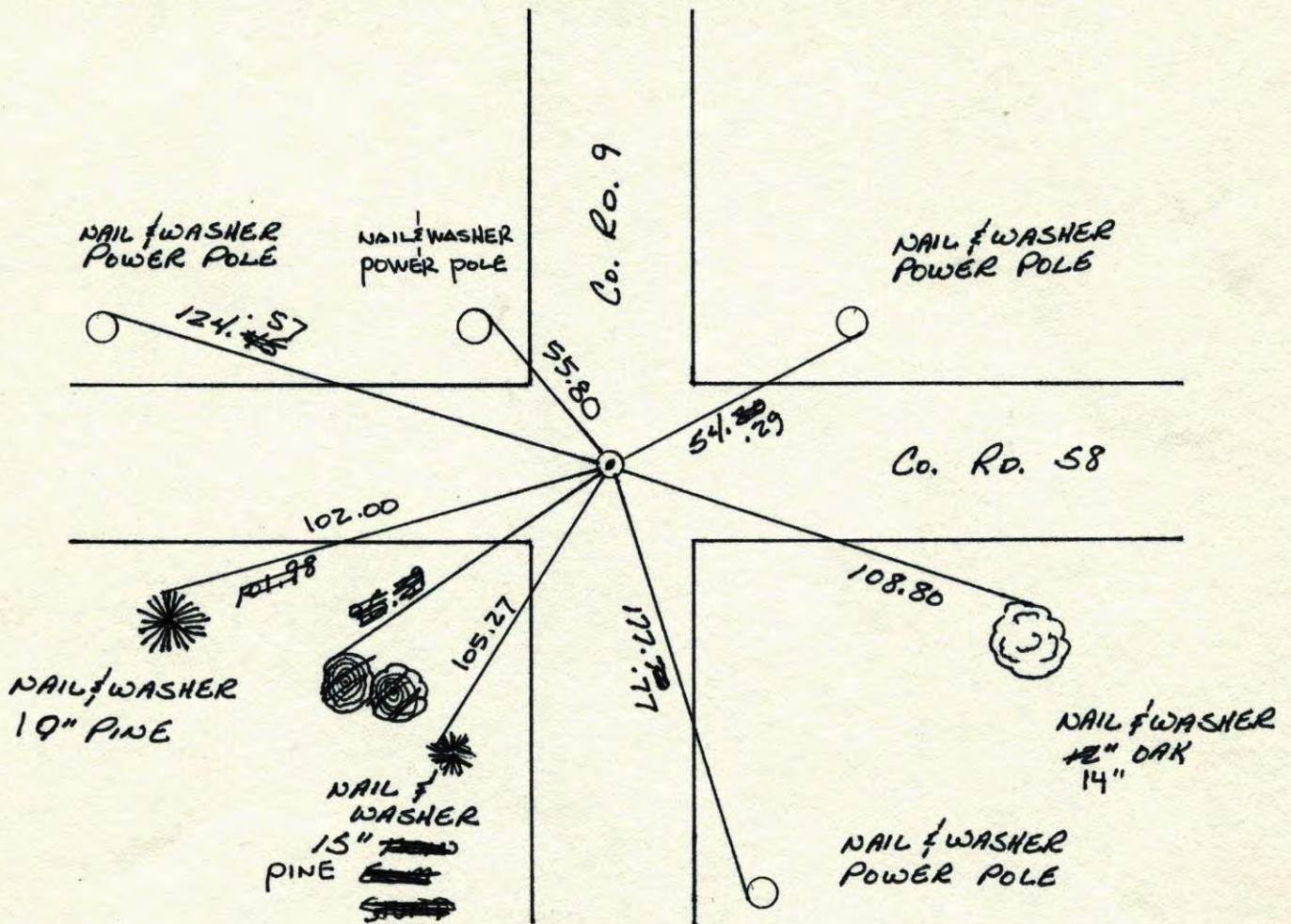
State of Minnesota

NORTHWEST Corner of Sec. 4 Township 32 Range 24

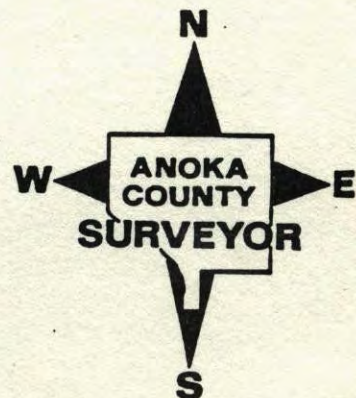
I hereby certify that on the 6 day of JULY, 1960, I found the described corner which was evidenced by SANDSTONE MONUMENT

and I further certify that to perpetuate the location of said corner, I did, at the exact location thereof, place a permanent marker consisting of CAST IRON MONUMENT

which reference or witness monuments are located in the manner following:



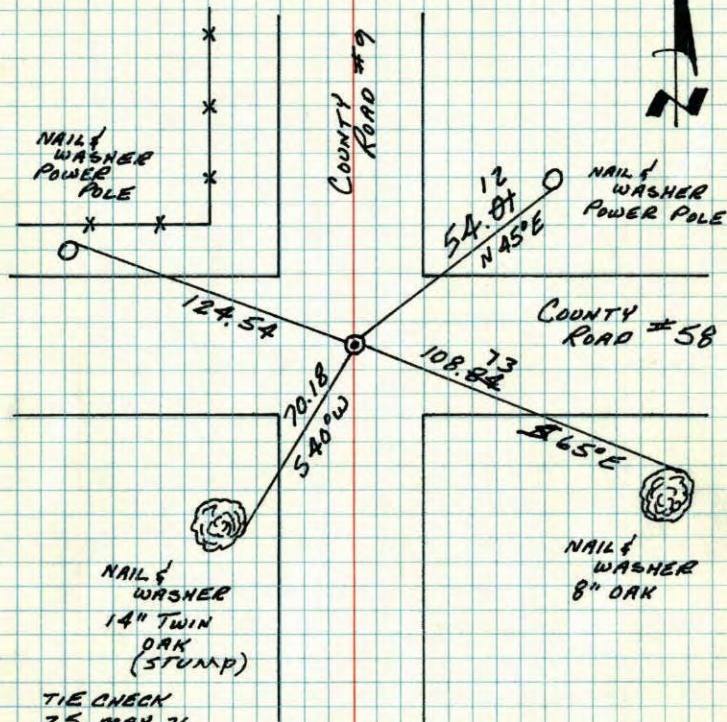
Revised date	Revised date	Revised date
5-29-85		
7-29-88		
7-14-93		
8-7-00		





# N. W. CORNER SECTION 4-T32-R24

SET CAST IRON MONUMENT AT LOCATION OF FOUND SANDSTONE MONUMENT. P.K.'S 2.00' NORTH AND EAST.  
6 Jul 60  
R. ANDERSON  
D. GIDDINGS



TIE CHECK  
25 MAY 76  
D. DAHL  
B. SANNEKUD  
G. ADAMS

TIE CHECK  
5-29-79  
B. STEPHENS  
P. ROSS

TIE CHECK  
9-7-82  
P. ROSS  
P. HORNBY  
D. NAGLAK

TEMPERATURE CORRECTED ROLAND W. ANDERSON  
AND HORIZONTALLY COUNTY SURVEYOR  
TAPED MEASUREMENTS ANOKA COUNTY, MINNESOTA

REDRAWN  
16 JAN 79  
RMG.

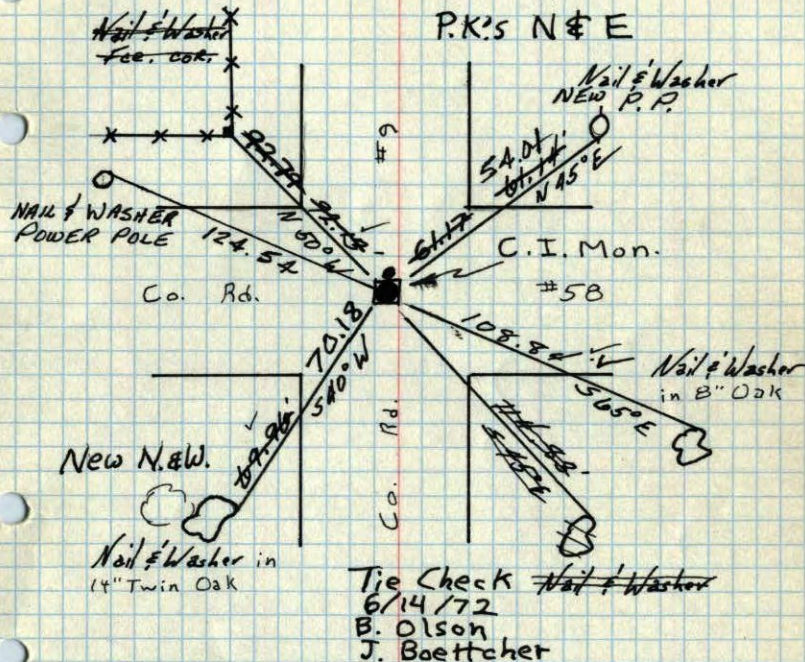
NW Cor. Sec 4 - T32 - R24  
Sandstone Mon. (down 0.5')  
Set I.P. on N side

Tie Check  
July 5, 1968  
H. Larson  
R. Olson  
P. Pieh

SEE NEW  
TIE BOOK

Replaced with Cast  
Iron Monument - June 65  
Oliver, Anderson, Larson,  
Dunlop, Carlson

P.K.'S N & E



TEMPERATURE CORRECTED  
AND HORIZONTALLY  
TAPED MEASUREMENTS

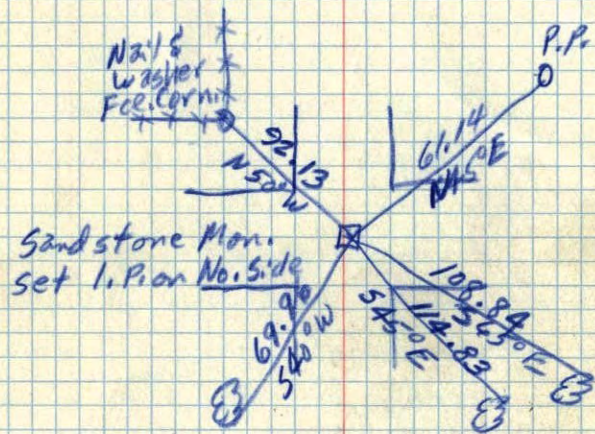
July 6, 1960  
R. W. Anderson  
Dick Giddings Assist.

TIE CHECK  
5-25-76  
D. DAHL  
B. SANNEKUD  
G. ADAMS

ROLAND W. ANDERSON  
COUNTY SURVEYOR  
ANOKA COUNTY, MINNESOTA



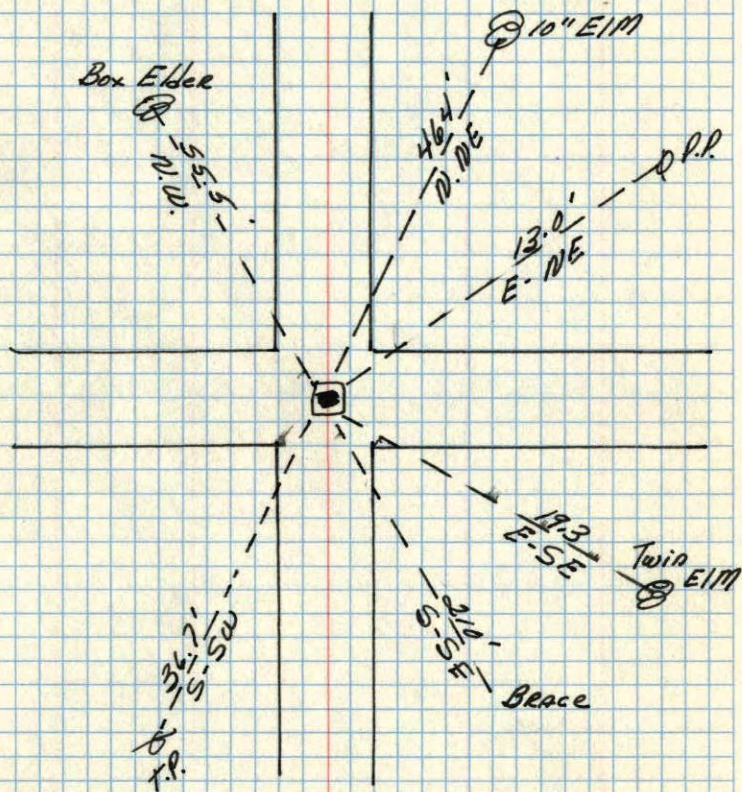
NW Corn. Sec. 4, T32, R24



July 6, 1960  
Dick Giddings Assist.

7/25/60

NE corner of Sec. 5 Grow twp.



Anoka Co. Hwy. Dept.