

CERTIFICATE OF LOCATION OF GOVERNMENT CORNER

County of Anoka

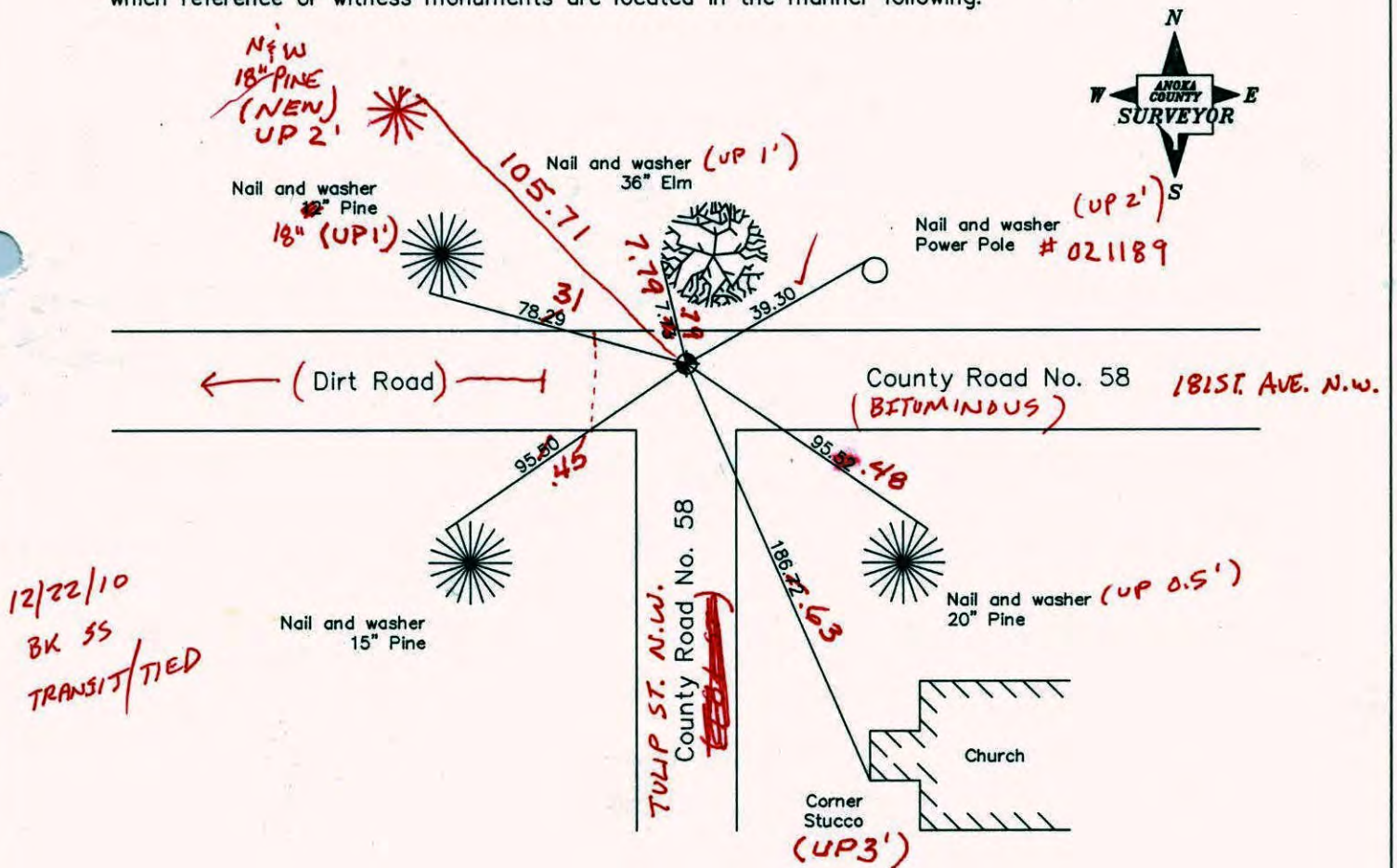
State of Minnesota

North $\frac{1}{4}$ Corner of Sec. 5 Township 32 Range 24

I hereby certify that on the 31st day of May, 1963, I found the described corner which was evidenced by a granite monument from highway ties

and I further certify that to perpetuate the location of said corner, I did, at the exact location thereof, place a permanent marker consisting of a cast iron monument set in concrete located on top of the granite monument (FLUSH)

which reference or witness monuments are located in the manner following:



12/22/10
BK 55
TRANSIT/TIED

Revised date

7/8/92
11/22/93
10/3/00

N.A.D. 1983 Co-ordinates

County Project Co-ordinates	State Plane Co-ordinates
Northing <u>195989.3900</u>	Y _____
Easting <u>476675.9344</u>	X _____

Date 10/3/00

CERTIFICATE OF LOCATION OF GOVERNMENT CORNER

County of Anoka

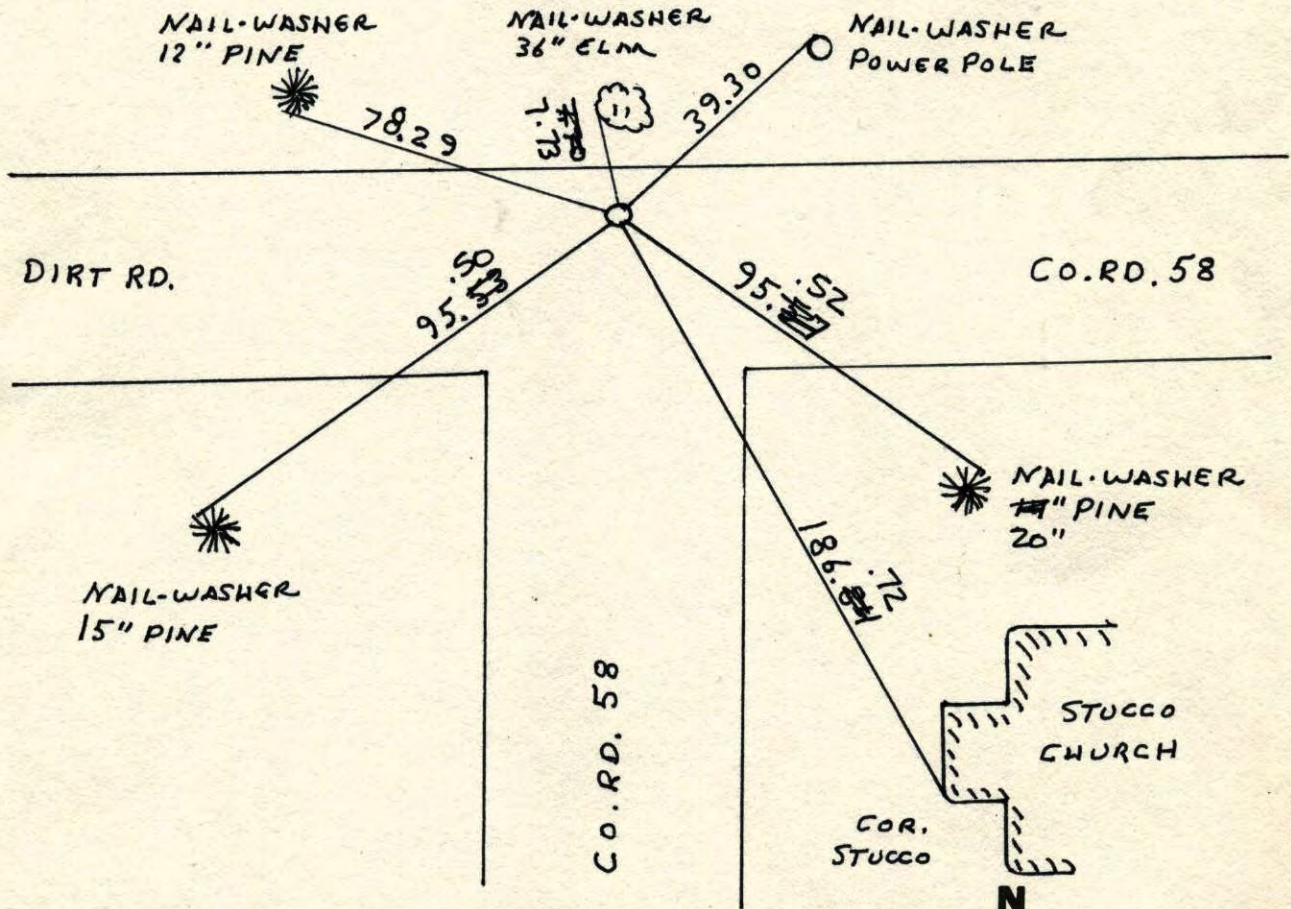
State of Minnesota

NORTH QUARTER
5
32
32
24
~~SOUTH 1/4~~ Corner of Sec. 32 Township 33 Range 24

I hereby certify that on the 31 day of MAY, 1963, I found the described corner which was evidenced by GRANITE FROM HWY. TIES

and I further certify that to perpetuate the location of said corner, I did, at the exact location thereof, place a permanent marker consisting of SAME WITH CAST IRON ON TOP SET IN CONCRETE

which reference or witness monuments are located in the manner following:



Revised date	Revised date	Revised date
7-15-87		
7-9-92		
11-22-93 WL		
10-3-00		

