

CERTIFICATE OF LOCATION OF GOVERNMENT CORNER

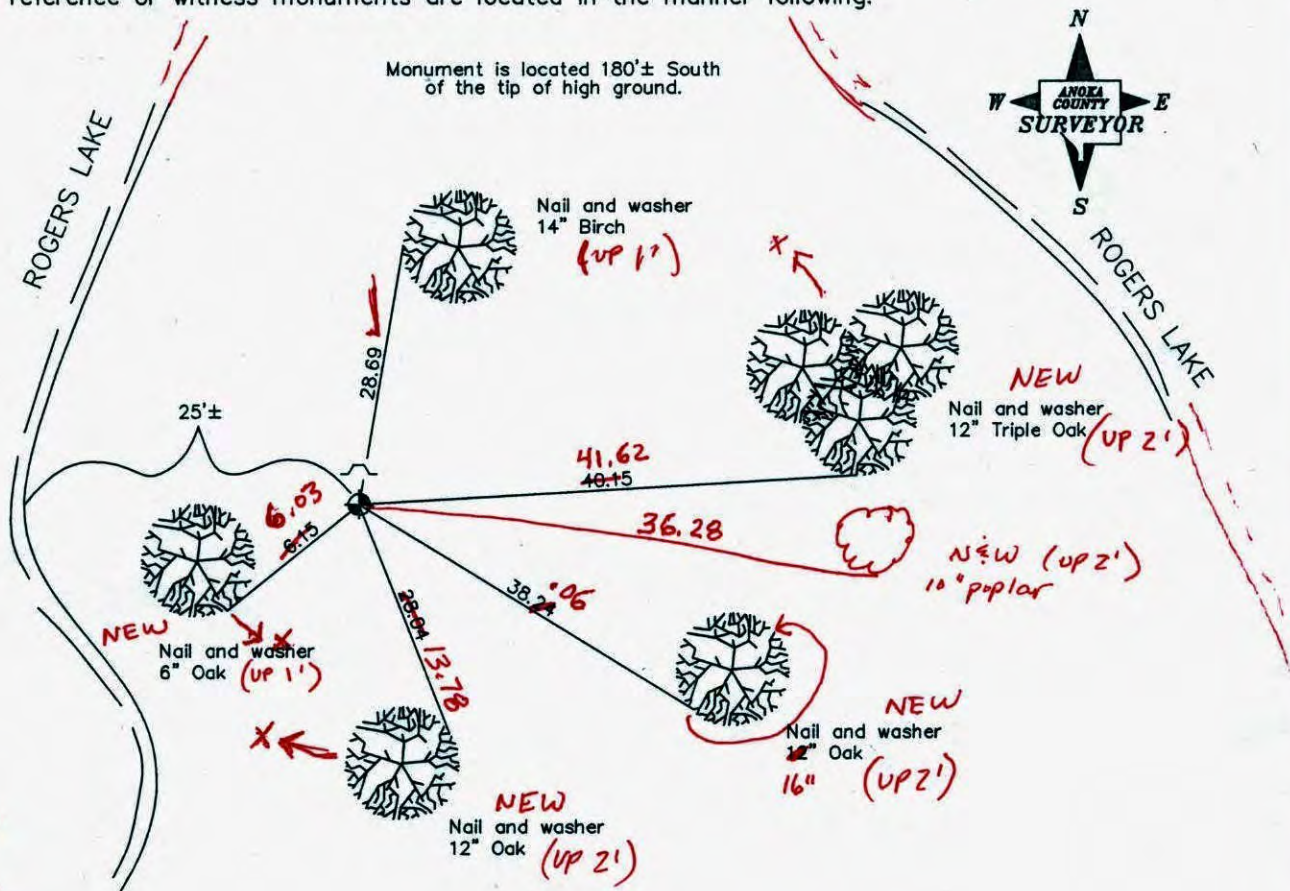
County of Anoka State of Minnesota

Witness Corner of Sec. 6 Township 32 Range 24
On The North Line

I hereby certify that on the 22nd day of December, 1988, I found the described corner which was evidenced by area resurvey

and I further certify that to perpetuate the location of said corner, I did, at the exact location thereof, place a permanent marker consisting of a cast iron monument with sign and post on the north side ✓ FLUSH W/GROUND

which reference or witness monuments are located in the manner following:



1/4/11
B.K. S.S.
TAPED

Revised date

7/7/82
8/11/88
1/4/01

N.A.D. 1983 Co-ordinates

County Project Co-ordinates
Northing <u>196130.1730</u>
Easting <u>468896.6920</u>

State Plane Co-ordinates
Y _____
X _____

Date 1/4/01

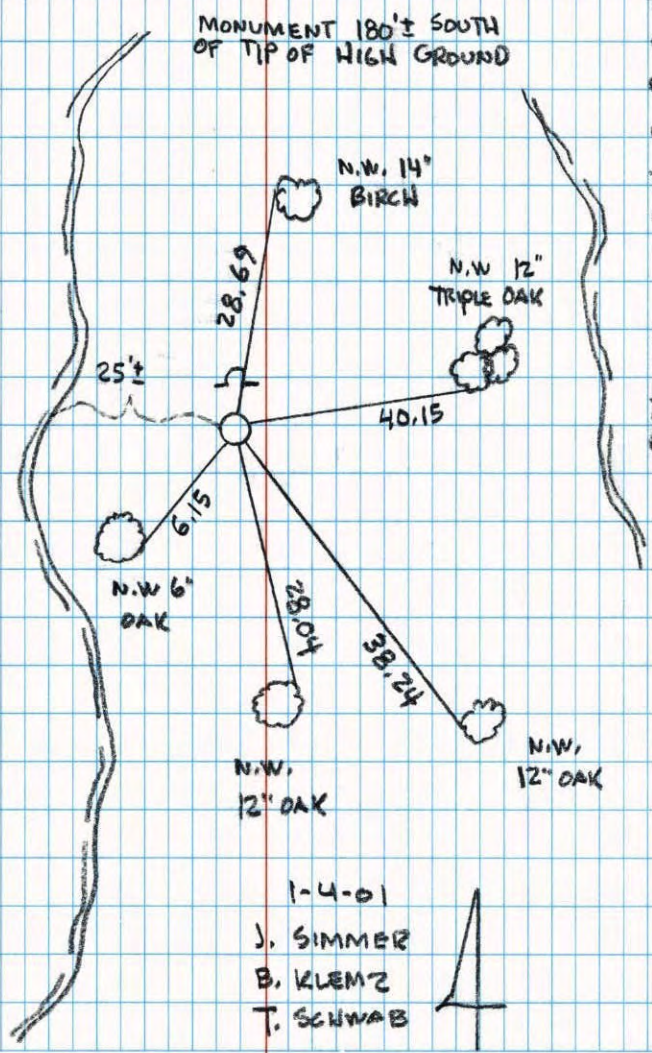
WITNESS COR.
ON NORTH LINE SEC 6 T 32 R 24

RETIED & GPS. CAST IRON MONUMENT
SIGN & POST ON N. SIDE

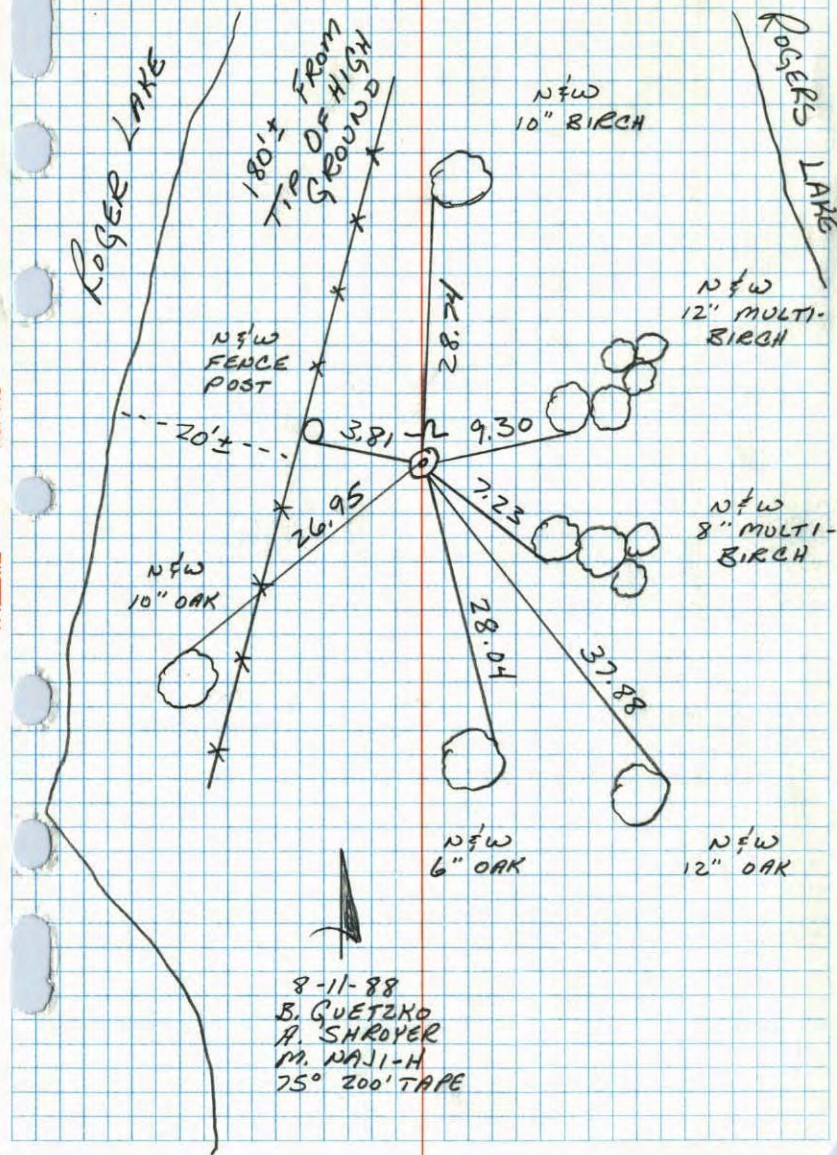
NATIONAL PRINTFAST
NO. 546

ROGERS LAKE

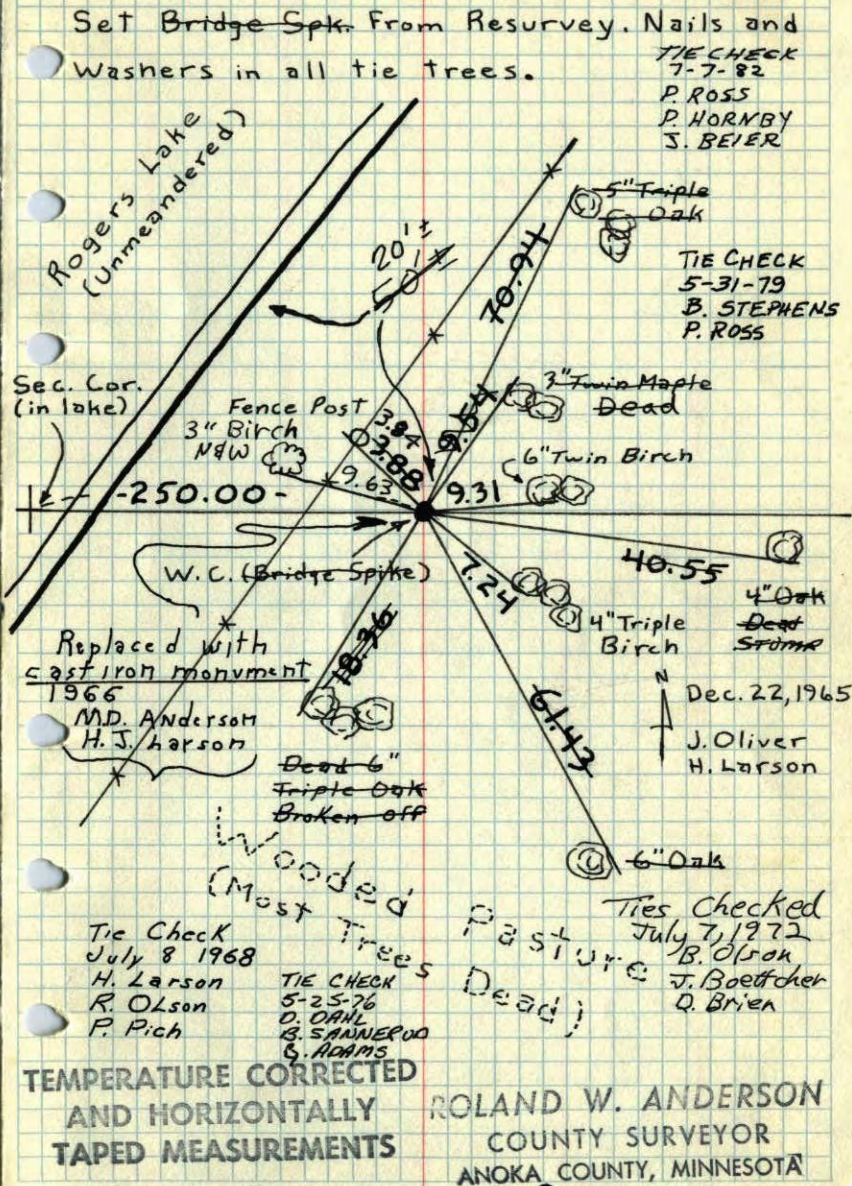
ROGERS LAKE



9
WITNESS CORNER ON THE NORTH LINE
OF SEC 6 T32 R24



9
W.C. on No. line Sec. 6, T32, R24



W. C. on No. line Sec. 6, T32, R24

1 W. of No. 1/4 Cor. Set Bridge Spk.

From Resurvey, Nails and washers in all
the trees.

Dec. 22, 1965
24 #5
J. Oliver
H. Larson

Rogers Lake
Unmeandered

F.P.

250.00

Bridge
Spk
W. C.

Dead 6"
Triple Oak

Wooded
Pasture
(Most Trees Dead)

