

CERTIFICATE OF LOCATION OF GOVERNMENT CORNER

County of Anoka State of Minnesota

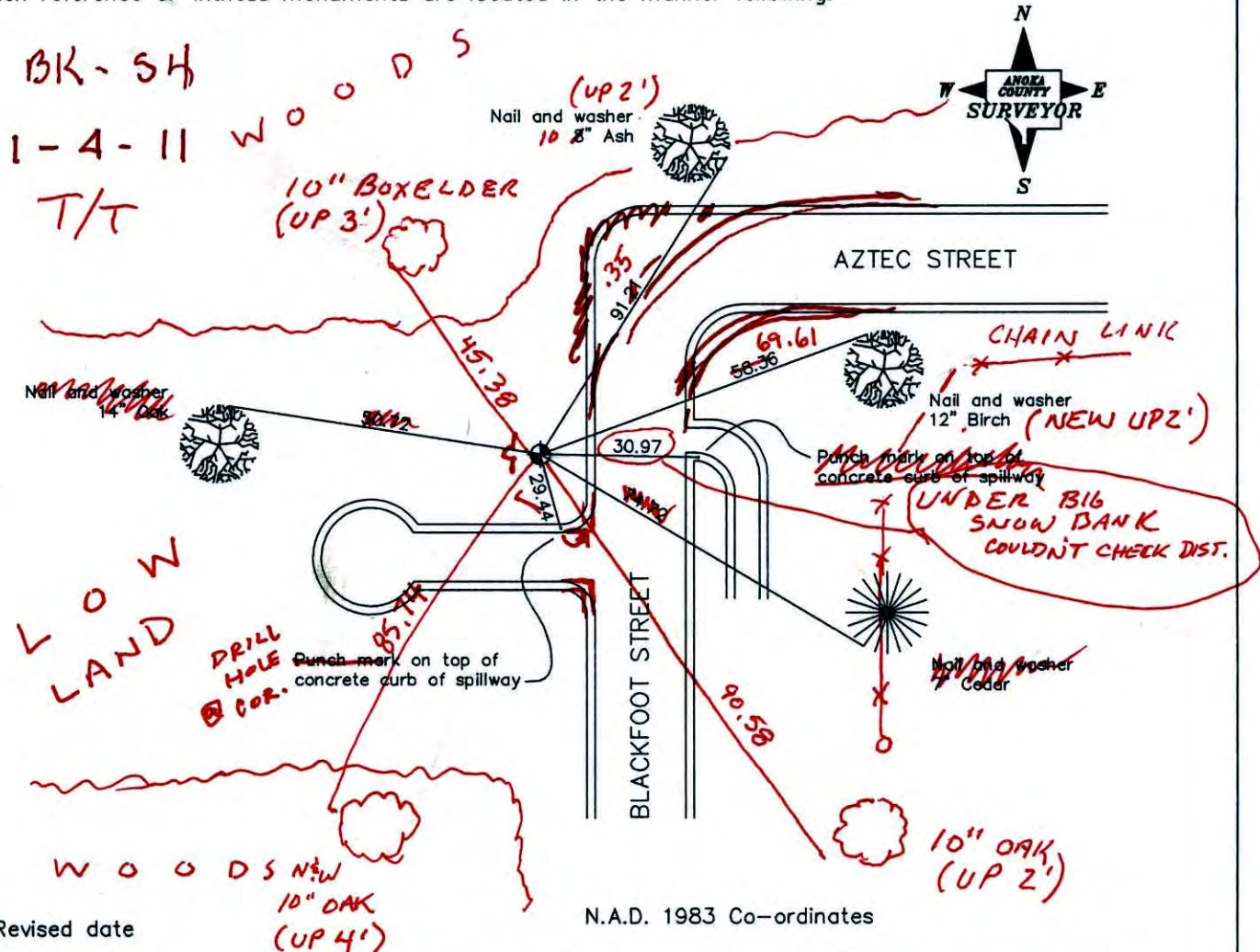
East 1/4 Corner of Sec. 6 Township 32 Range 24

I hereby certify that on the 17th day of May, 1966, I found the described corner which was evidenced by area resurvey

and I further certify that to perpetuate the location of said corner, I did, at the exact location thereof, place a permanent marker consisting of a cast iron monument

(MON. DOWN 0.5') 2-16-11 ADDED SIGN & POST (1'± ON W. SIDE)

which reference or witness monuments are located in the manner following:



N.A.D. 1983 Co-ordinates

Revised date

8/12/88
7/27/93
10/3/00

County Project Co-ordinates	State Plane Co-ordinates
Northing <u>193491.2602</u>	Y _____
Easting <u>474058.0058</u>	X _____

Date 10/3/00

CERTIFICATE OF LOCATION OF GOVERNMENT CORNER

County of Anoka

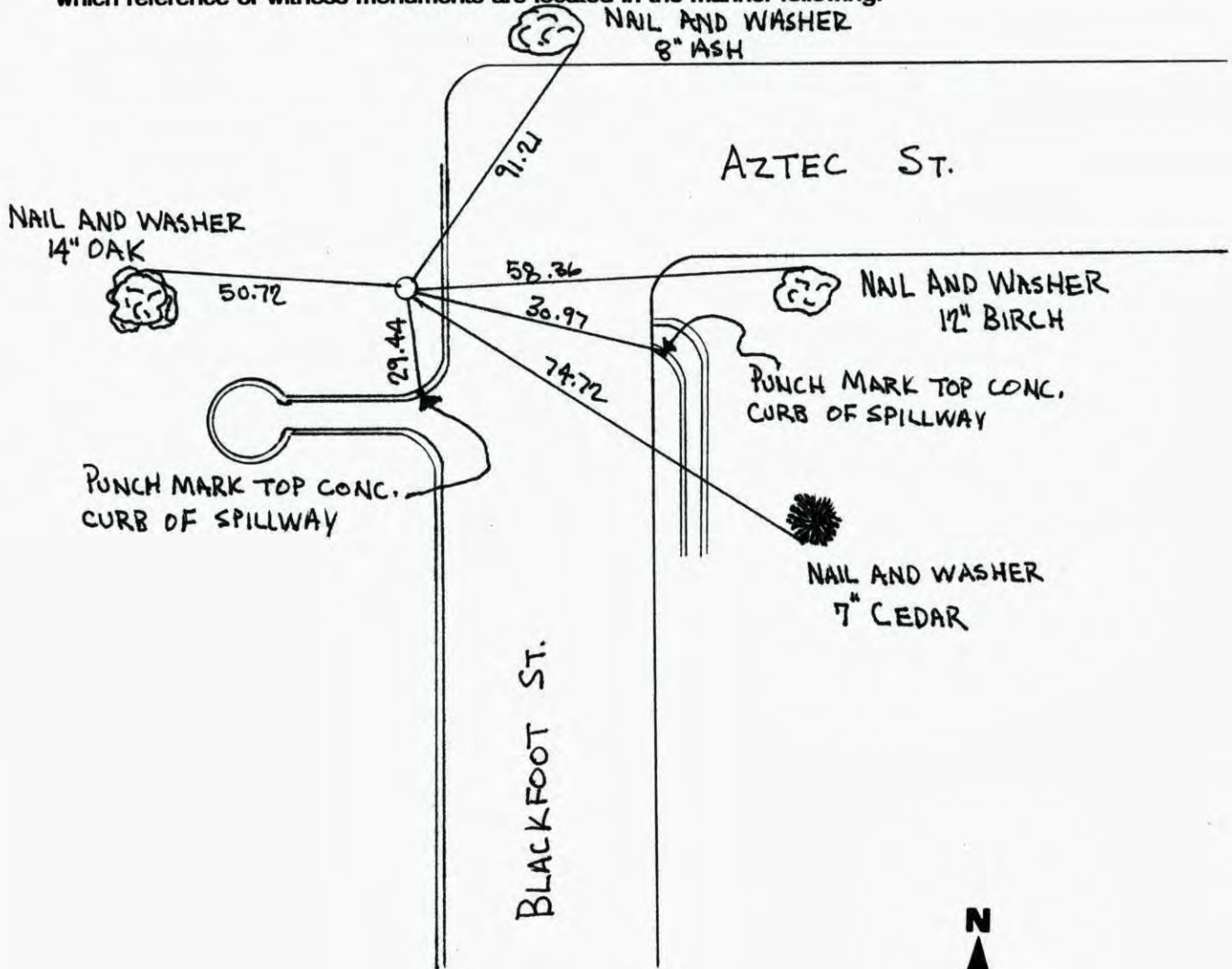
State of Minnesota

EAST 1/4 Corner of Sec. 6 Township 32 Range 24

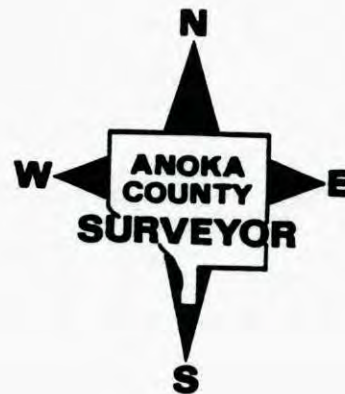
I hereby certify that on the 17TH day of MAY, 19 66, I found the described corner which was evidenced by AREA RESURVEY

and I further certify that to perpetuate the location of said corner, I did, at the exact location thereof, place a permanent marker consisting of CAST IRON MONUMENT

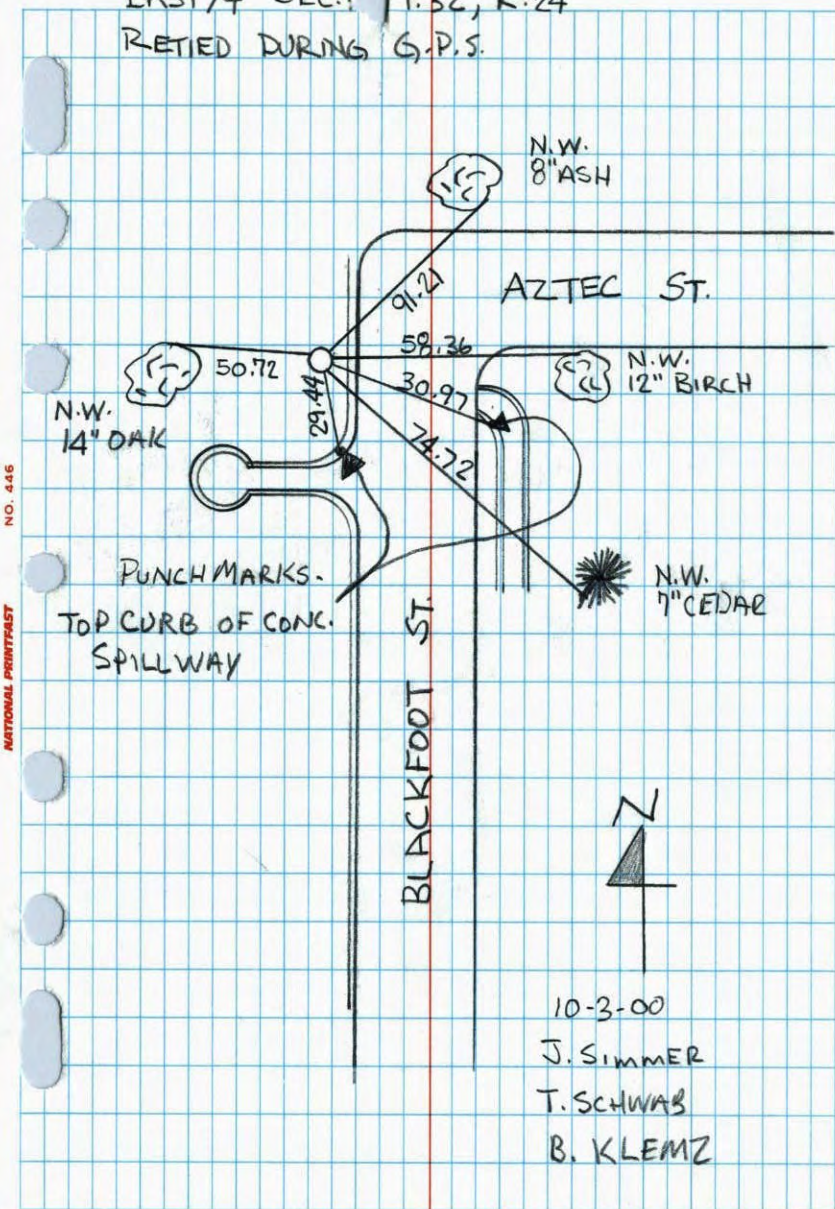
which reference or witness monuments are located in the manner following:



Revised date	Revised date	Revised date
6-5-85		
8-12-88		
7-27-93		
10-3-00		

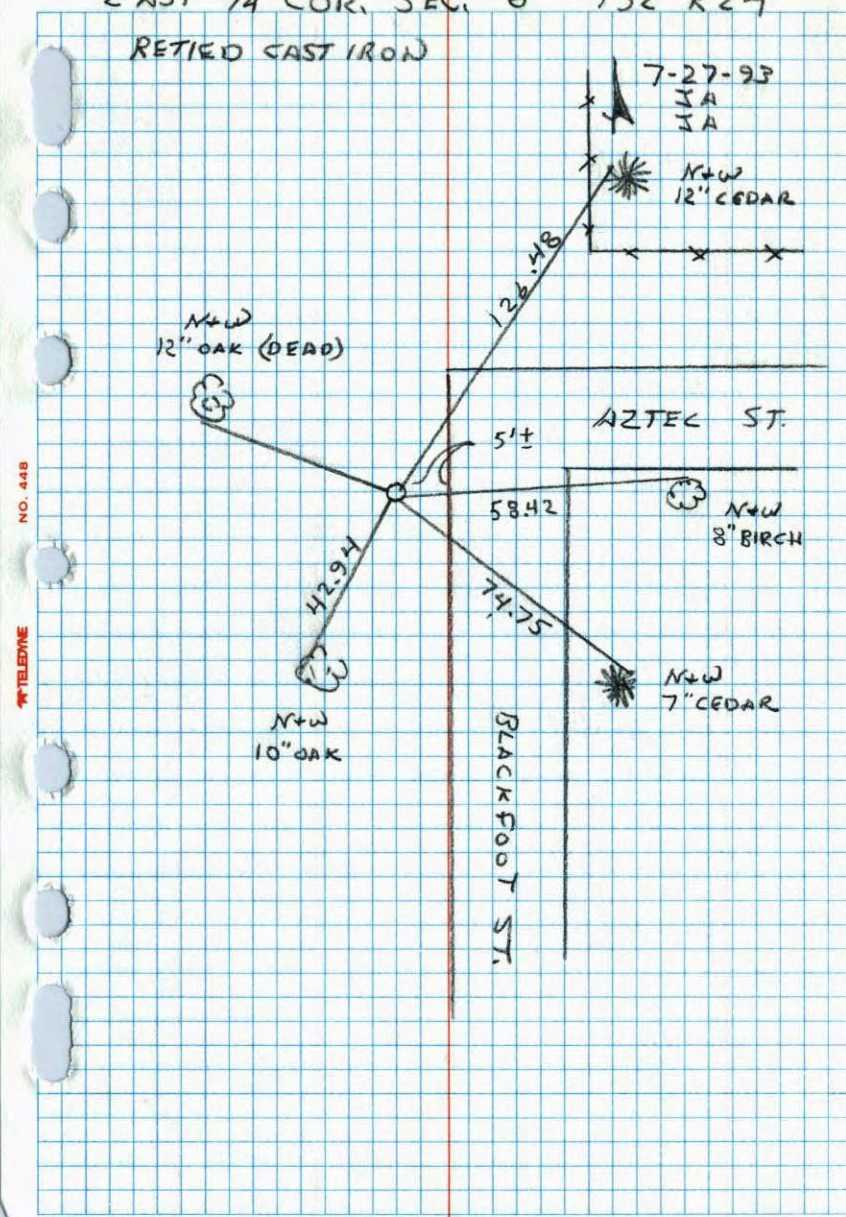


EAST 1/4 SEC. 6 T. 32, R. 24
 RETIED DURING G.P.S.



NATIONAL PRINTING NO. 445

EAST 1/4 COR. SEC. 6 T32 R24
 RETIED EAST IRON

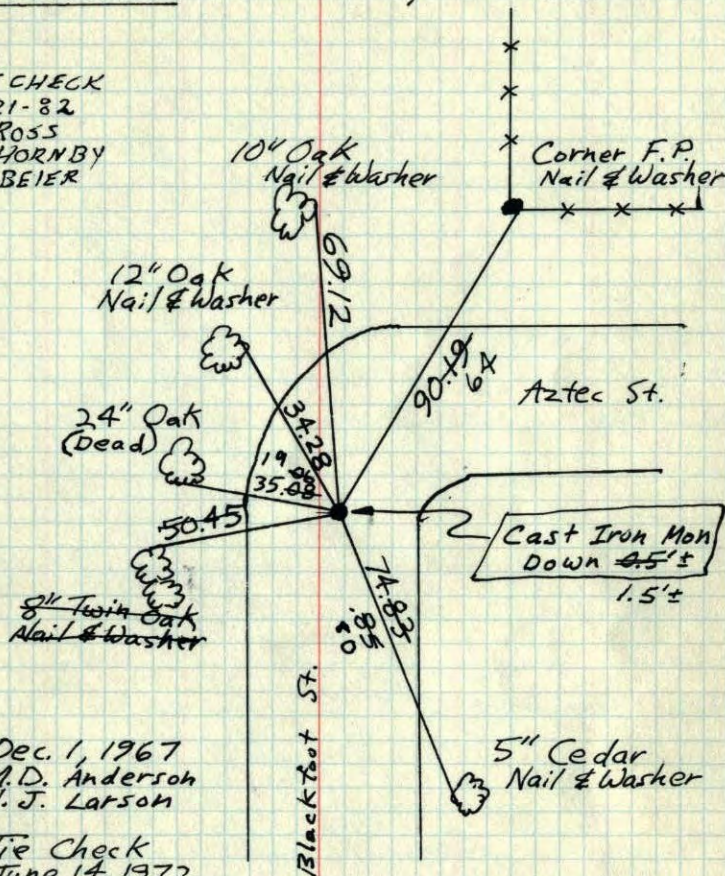


NATIONAL PRINTING NO. 445

10
E 1/4 Cor. Sec. 6 - T 32 - R 24

Cast Iron set over top old monument.

TIE CHECK
6-21-82
P. ROSS
P. HORNBY
J. BEIER



Dec. 1, 1967
M.D. Anderson
H. J. Larson

Tie Check
June 14, 1972
B. Olson
J. Boettcher

TIE CHECK
5-24-76
D. OAH
B. SANDERUD
G. ADAMS

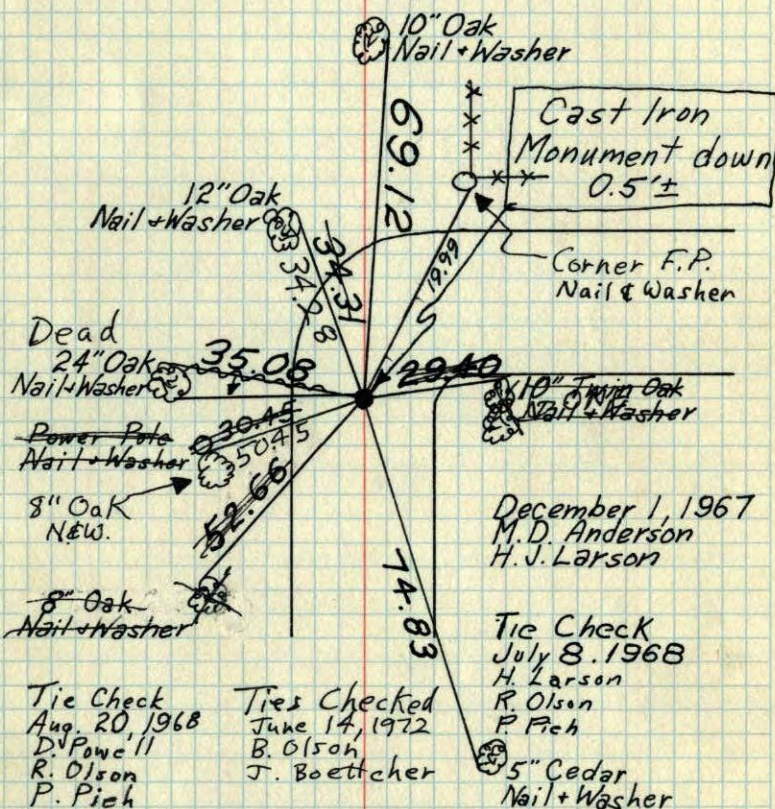
TIE CHECK
5-30-79
B. STEPHENS
P. ROSS

TEMPERATURE CORRECTED
AND HORIZONTALLY
TAPED MEASUREMENTS

ROLAND W. ANDERSON
COUNTY SURVEYOR
ANOKA COUNTY, MINNESOTA

10
E 1/4 Cor. Sec. 6 - T 32 - R 24

Found Cast Iron Monument down 2.8'±
Reset Cast Iron Monument from red and
white iron pipes set by LeRoy Winner and two
remaining ties.
Set new Cast Iron over top old monument.



December 1, 1967
M.D. Anderson
H. J. Larson

Tie Check
July 8, 1968
H. Larson
R. Olson
P. Fich

Tie Check
Aug. 20, 1968
D. Powell
R. Olson
P. Pich

Ties Checked
June 14, 1972
B. Olson
J. Boettcher

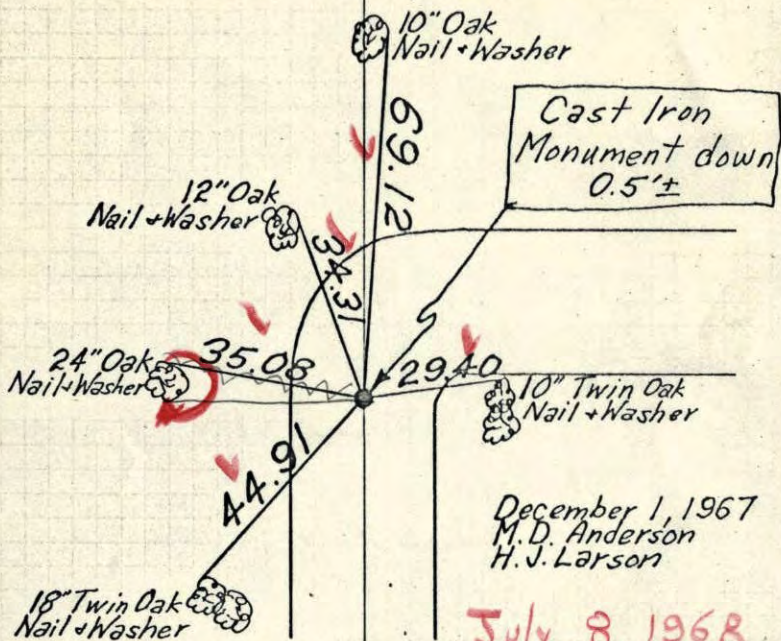
TEMPERATURE CORRECTED ROLAND W. ANDERSON
AND HORIZONTALLY COUNTY SURVEYOR
TAPED MEASUREMENTS 'ANOKA COUNTY, MINNESOTA'

8A
10
E 1/4 Cor. Sec. 6-T32-R24

Found Cast Iron Monument down 2.8'±

Reset Cast Iron Monument from red and white iron pipes set by LeRoy Winner and two remaining ties.

Set new Cast Iron over top old monument.



December 1, 1967
M. D. Anderson
H. J. Larson

July 8, 1968
H. Larson
R. Olson
P. Rich

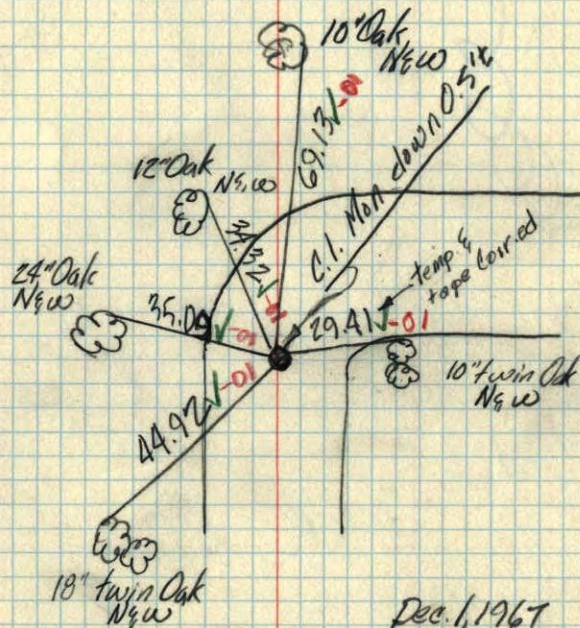
TEMPERATURE CORRECTED
AND HORIZONTALLY
TAPED MEASUREMENTS

ROLAND W. ANDERSON
COUNTY SURVEYOR
'ANOKA COUNTY, MINNESOTA'

E 1/4 Cor. Sec. 6-T32-R24

found C.I. Mon. down 2.8'±

Reset C.I. Mon. from R/W. I.P.'s set by LeRoy Winner & two remaining ties
Set New C.I. over top of Old C.I. Mon.

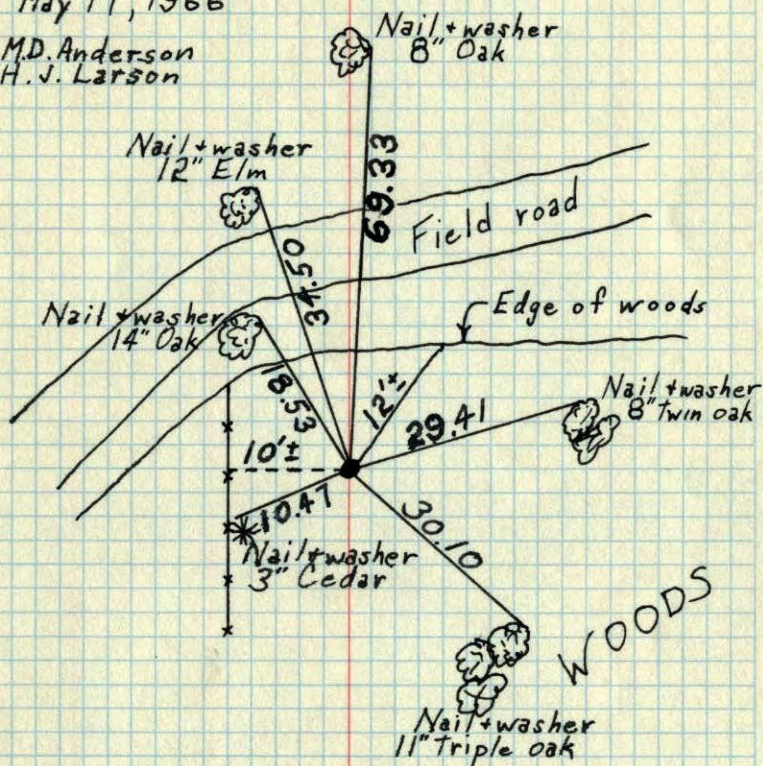


Dec. 1, 1967
M. D. Anderson
H. J. Larson
temp: 30
tape: 51

E 1/4 Cor. Sec. 6 - T32 - R24

Set Cast Iron Monument flush from Resurvey

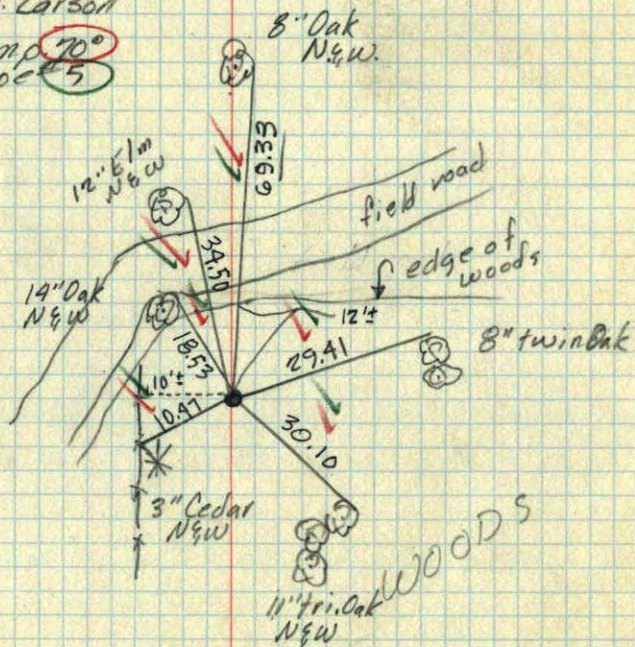
May 17, 1966

M.D. Anderson
H.J. LarsonTEMPERATURE CORRECTED
AND HORIZONTALLY
TAPED MEASUREMENTSROLAND W. ANDERSON
COUNTY SURVEYOR
ANOKA COUNTY, MINNESOTA

E 1/4 Cor. Sec. 6 - T32 - R24

Set Cast iron Mon. flush from Resurvey

May 17, 1966

M.D. Anderson
H.J. LarsonTemp. 70°
Tape 5 TEMPERATURE CORRECTED
AND HORIZONTALLY
TAPED MEASUREMENTSROLAND W. ANDERSON
COUNTY SURVEYOR
ANOKA COUNTY, MINNESOTA

E 1/4 Cor. Sec. 6 - T32¹⁰ - R24

