

862 4282  
274 8127

# CERTIFICATE OF LOCATION OF GOVERNMENT CORNER

County of Anoka

State of Minnesota

## West 1/4 Corner of Sec. 2 Township 32 Range 24

On the 27th day of February, 1963, the described corner was evidenced by area resurvey

and to perpetuate the location of said corner, at the exact location thereof, a permanent marker was placed consisting of a cast iron monument

AND on the 28th day of January, 2011, said permanent marker was found flush with the surface and the ties were updated

Updated reference ties are as shown below.

6-8-12  
J.S. JB.

~~REMOVED~~  
~~RAISED~~  
~~RAISED~~

REMOVED  
BROKEN  
CIM

T/T w/ MINI PRISM

Nail and washer  
18" Oak  
(up 2'±)



186.40  
185.48

(Hanson Blvd. NW)

Nail and washer  
24" Oak  
(up 3'±)

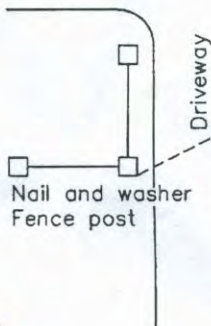


9-5-12 JS SH  
RESET G.I.M.  
+ RETIED  
CIRCLED  
DIST'S  
ARE FINAL

PK IN BACKTOP

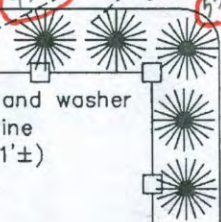
177th Avenue NW

Ward Lake Drive NW



93.13  
93.12  
55.40  
55.41  
55.47

Nail and washer  
8" Pine  
(up 1'±)



C.S.A.H. No. 78

109.43

102.52  
102.47

Nail and washer  
Power pole  
#89197  
(up 4'±)

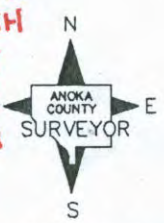
431.62  
.58

PK  
IN  
GUTTER  
LIVE  
IN FRONT  
OF MAILBOX  
# 1519  
IN SGAM

S-0.02

W-0.05

8-15-12  
JS SH  
SET PK  
+ STATIC  
POSITION



Revision Date  
4/05/11

N.A.D. 1983 Coordinates  
(1996 Adjustment)

County Project Coordinates	
Northing	193224.7343
Easting	489866.5186
Date	8/04/00

I hereby certify that this United States public land survey monument record is correct and complete to the best of my knowledge and belief.

*Larry D. Hoium* Date 4/05/11

Larry D. Hoium, Anoka County Surveyor  
Minnesota License Number 18165

# CERTIFICATE OF LOCATION OF GOVERNMENT CORNER

County of Anoka

State of Minnesota

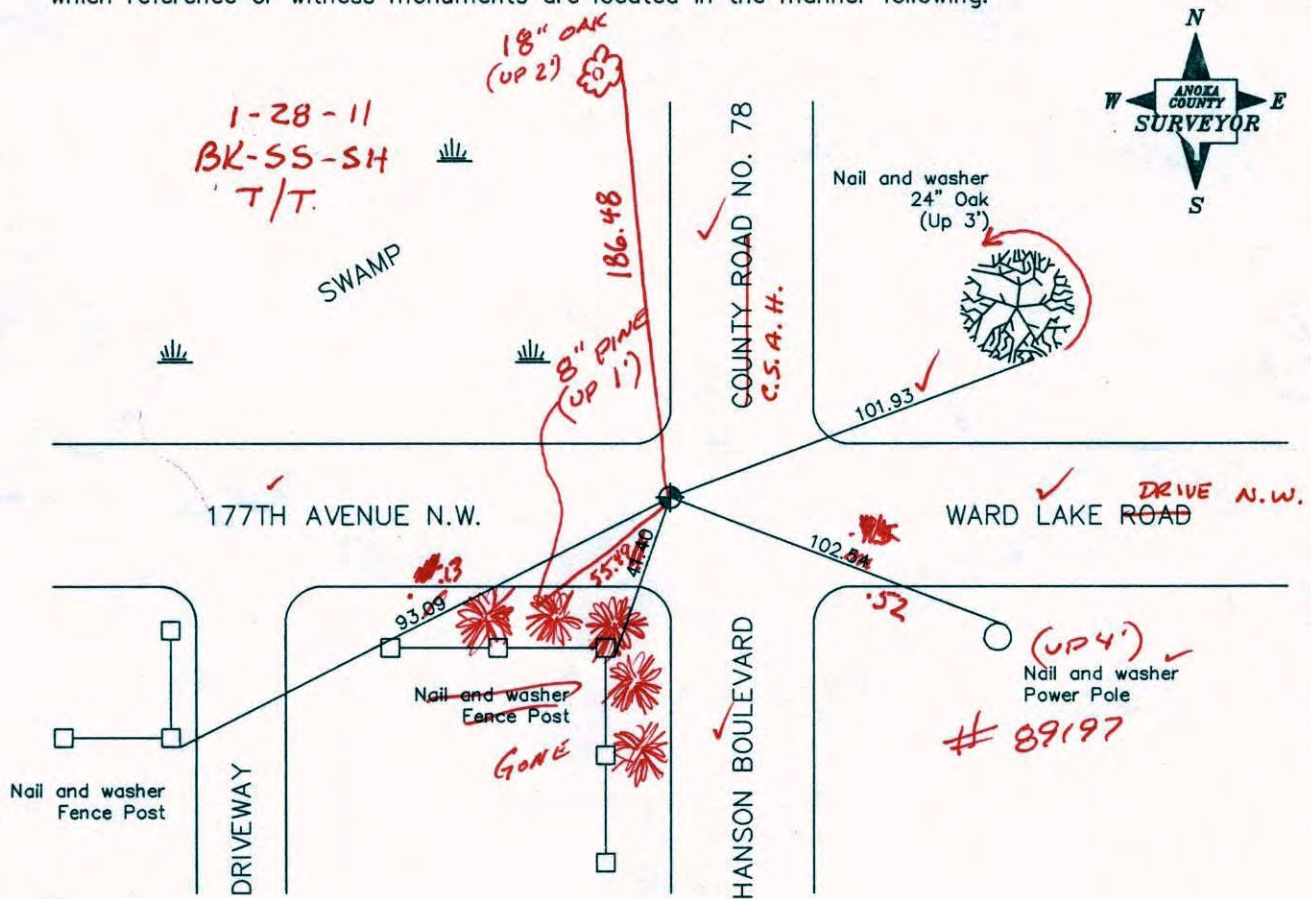
West 1/4 Corner of Sec. 2 Township 32 Range 24

I hereby certify that on the 27th day of February, 1963, I found the described corner which was evidenced by area resurvey

and I further certify that to perpetuate the location of said corner, I did, at the exact location thereof, place a permanent marker consisting of a cast iron monument

(FLUSH)

which reference or witness monuments are located in the manner following:



Revised date

10/20/87
7/19/93
8/4/00

N.A.D. 1983 Co-ordinates

County Project Co-ordinates	State Plane Co-ordinates
Northing <u>193224.7343</u>	Y _____
Easting <u>489866.5186</u>	X _____

Date 8/4/00

# CERTIFICATE OF LOCATION OF GOVERNMENT CORNER

County of Anoka

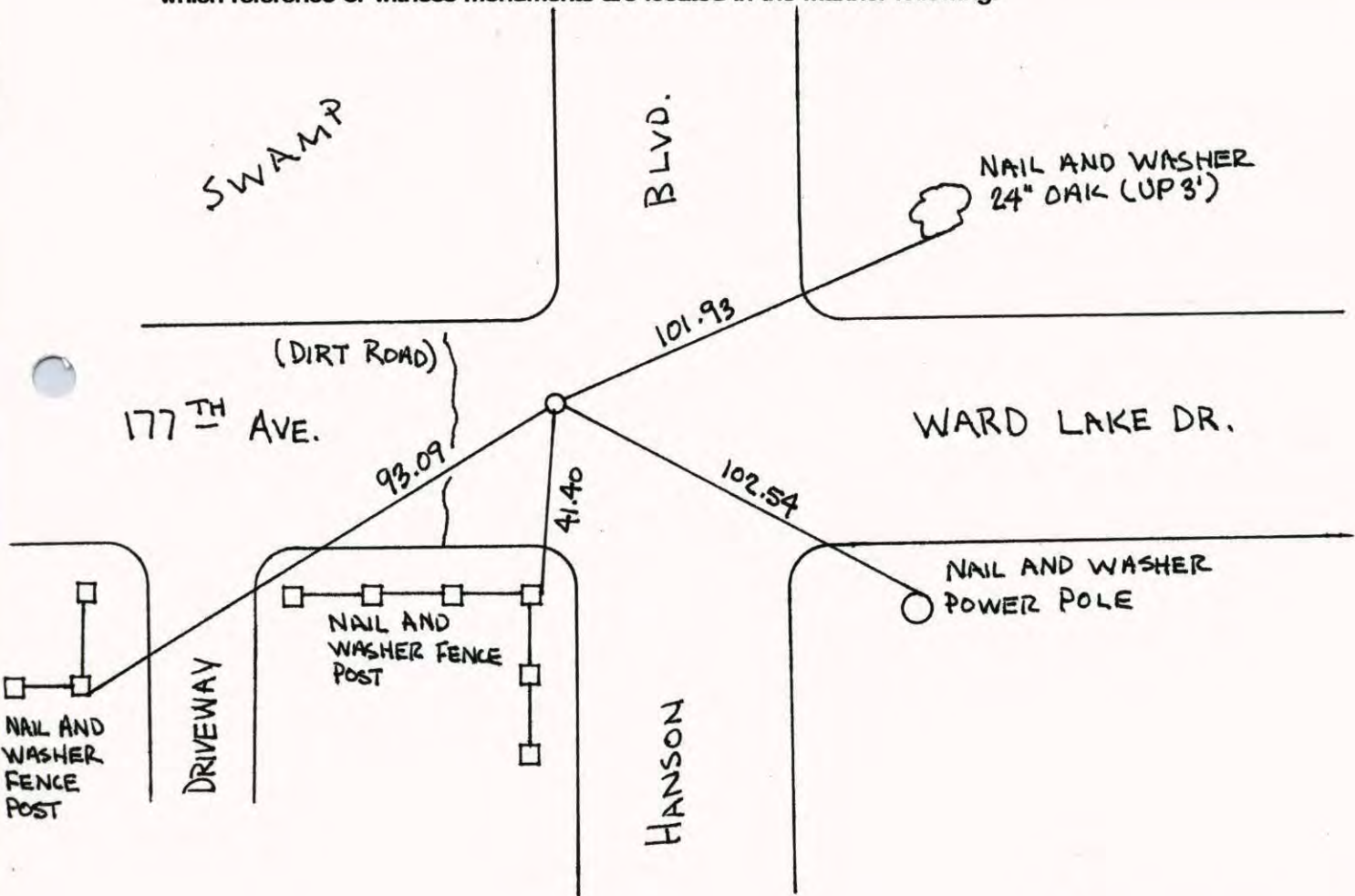
State of Minnesota

WEST QTR. Corner of Sec. 2 Township 32 Range 24

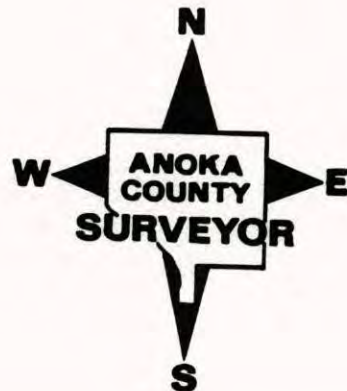
I hereby certify that on the 27<sup>TH</sup> day of FEBRUARY, 19 63, I found the described corner which was evidenced by AREA RESURVEY

and I further certify that to perpetuate the location of said corner, I did, at the exact location thereof, place a permanent marker consisting of CAST IRON MONUMENT

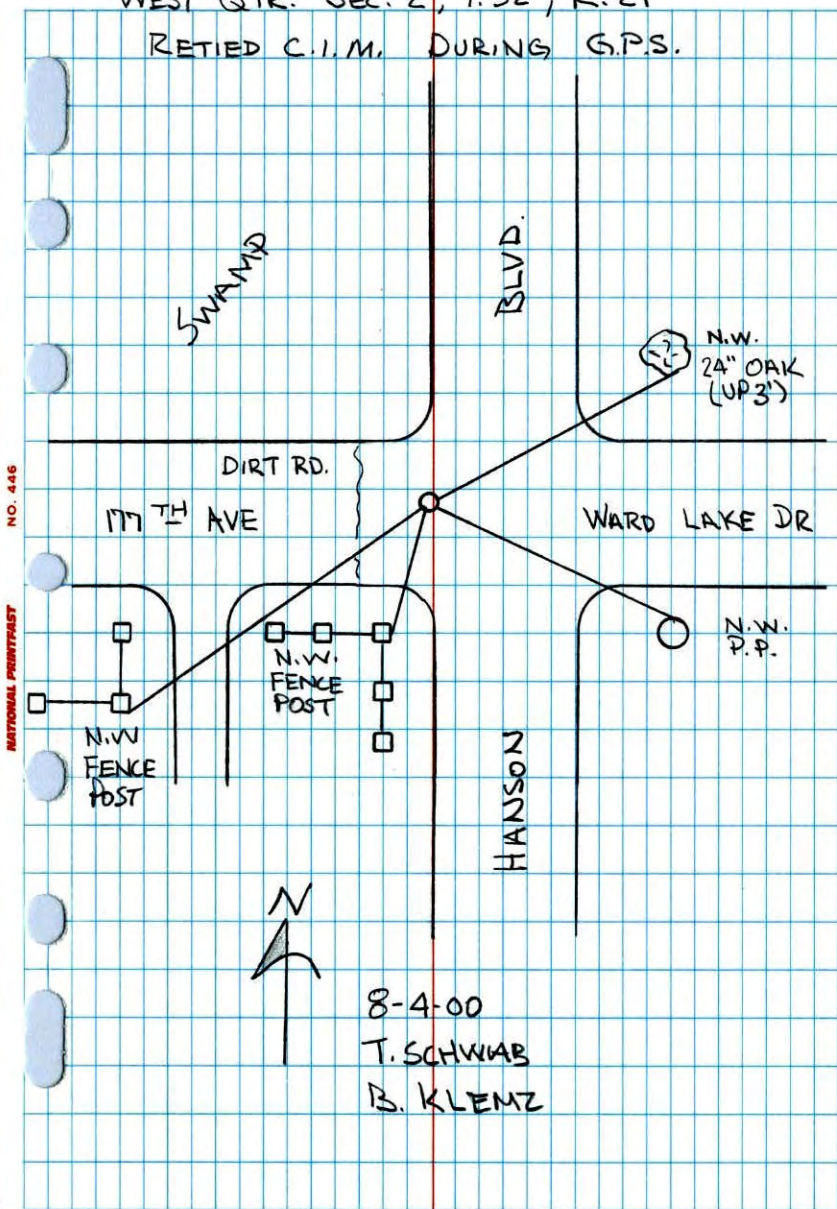
which reference or witness monuments are located in the manner following:



Revised date	Revised date	Revised date
10-20-87		
7-19-93		
8-4-00		



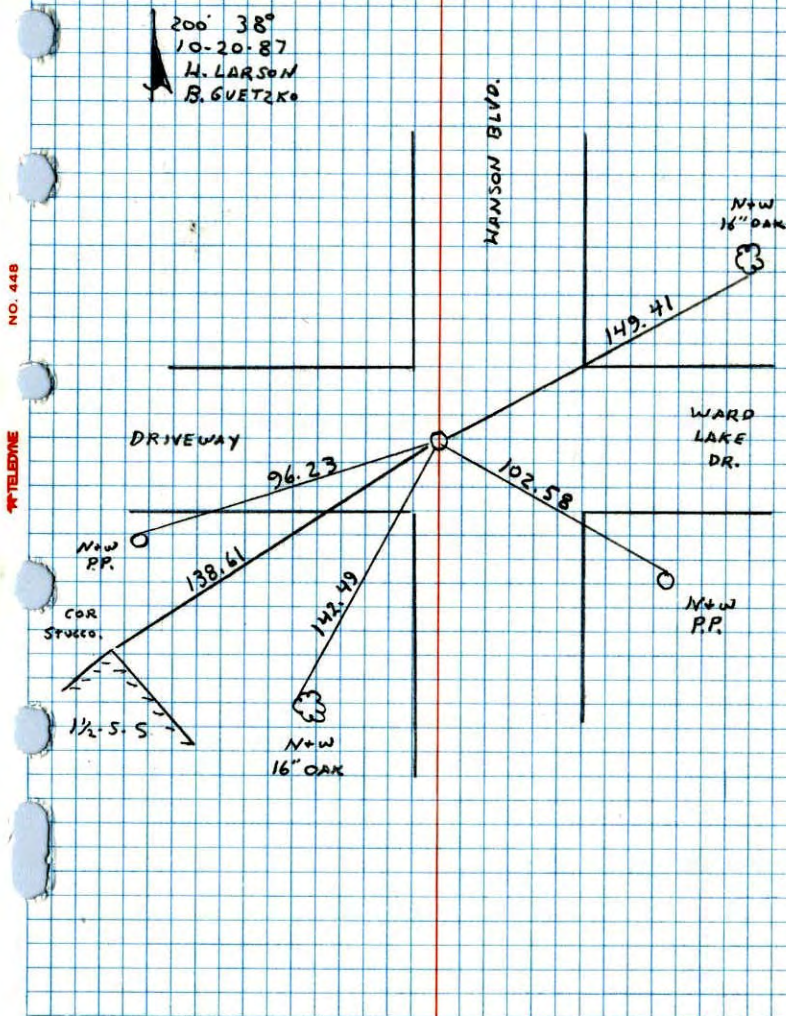
WEST QTR. SEC. 2, T. 32, R. 24  
 RETIED C.I.M. DURING G.P.S.



NO. 446

NATIONAL PRINTING

W 1/4 CORNER SECTION 2 T32 R24  
 RESET CAST IRON MONUMENT AFTER  
 ROAD CONSTRUCTION C.I. FLUSH



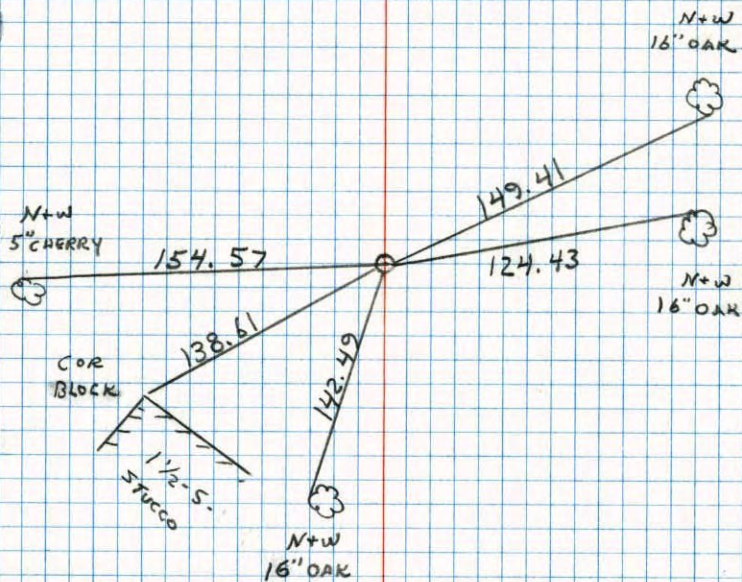
NO. 446

TELEPHONE

WEST 1/4 COR SEC. 2 T32 R24

TOOK ADDITIONAL TIES FOR ROAD  
CONSTRUCTION

5 82°  
7-23-87  
H. LARSON  
B. GUETZKO  
N. GRAMS



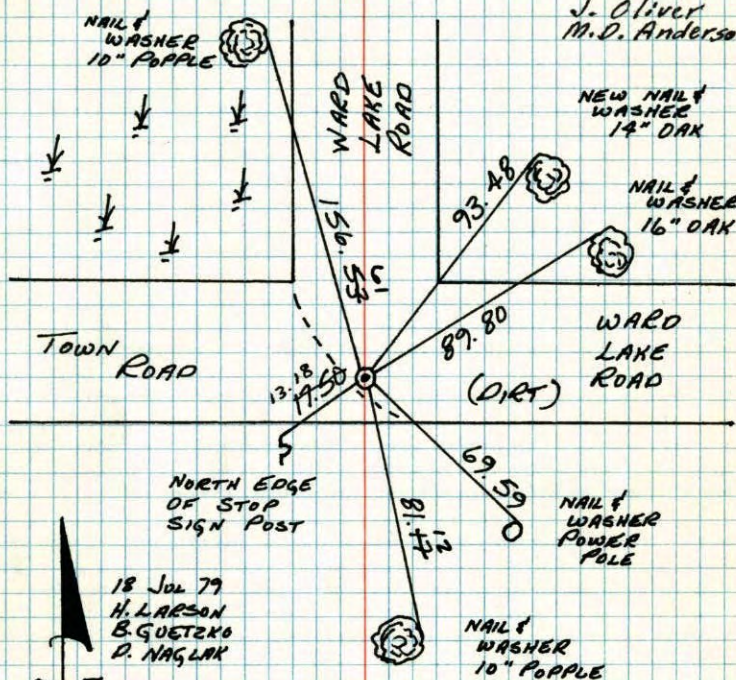
NO. 448

TELEPHONE

W 1/4 CORNER SECTION 2 - T32 - R24

RETIED CAST IRON MONUMENT SET IN 1969.  
CAST IRON DOWN .8'±

Feb. 27, 1963  
J. Oliver  
M.D. Anderson



NO. 448

TELEPHONE

18 Jul 79  
H. LARSON  
B. GUETZKO  
D. NAGLAK

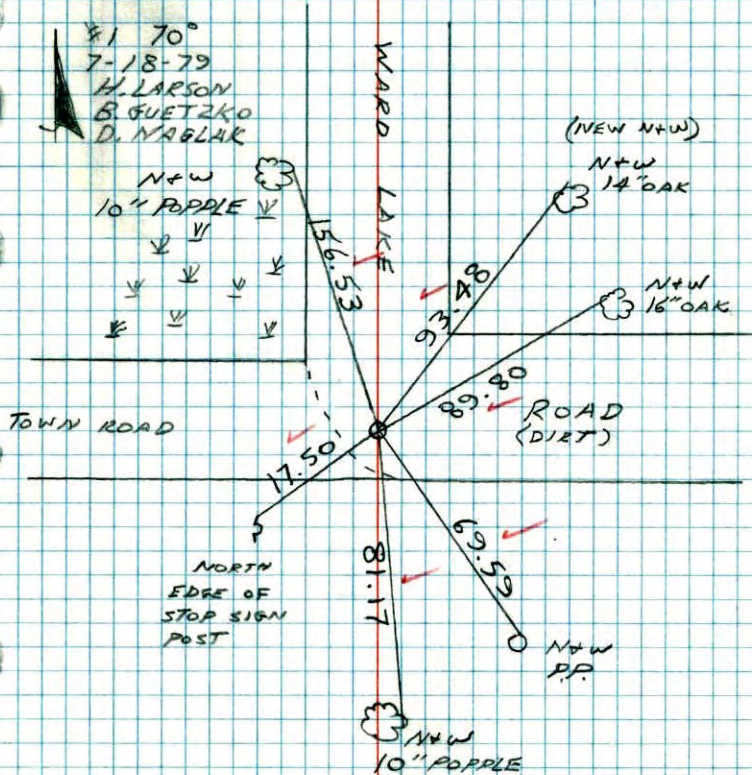
TIE CHECK  
6-17-82  
P. ROSS  
P. HORNBY  
J. BEIER

TEMPERATURE CORRECTED  
AND HORIZONTALLY  
TAPED MEASUREMENTS

ROLAND W. ANDERSON  
COUNTY SURVEYOR  
ANOKA COUNTY, MINNESOTA

W 1/4 COR. SECTION 2 T32 R24

RETIRED CAST IRON MONUMENT SET  
IN 1969. C.I. DOWN .8'±



NO. 448

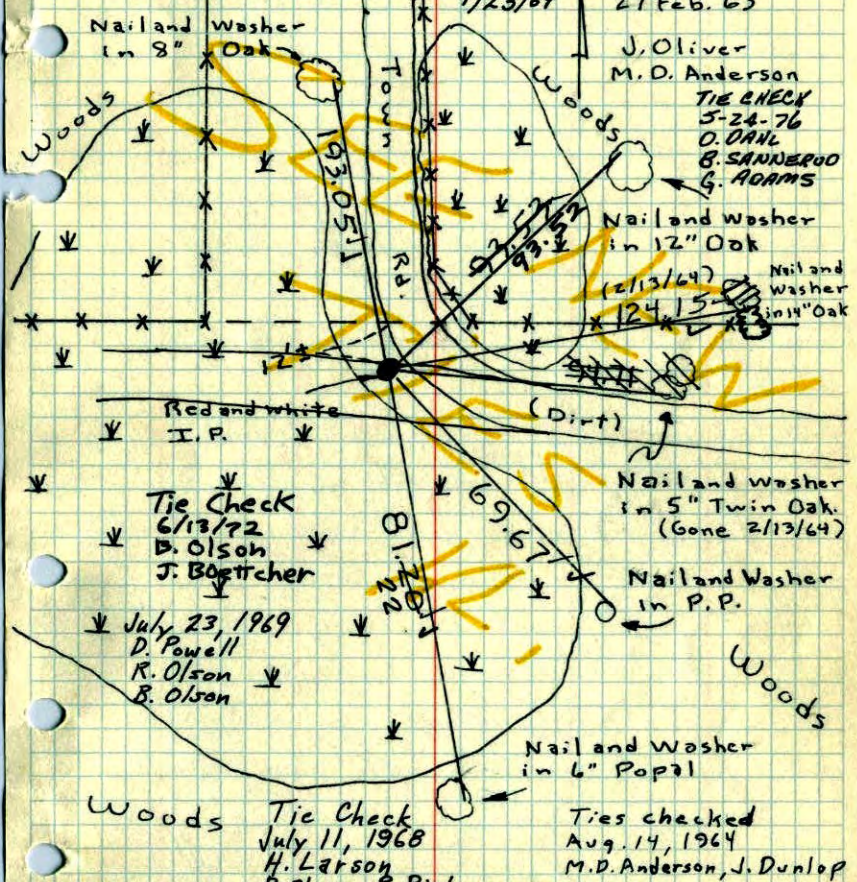
TELEPHONE

W 1/4 Cor. Sec. 2, T 32, R 24

Set ~~2\"/>~~

Top 2.5' ~~striking~~ up and painted with  
alternate 6\"/>

Set Cast Iron Monument down N 0.6'±.  
7/23/69 27 Feb. 63

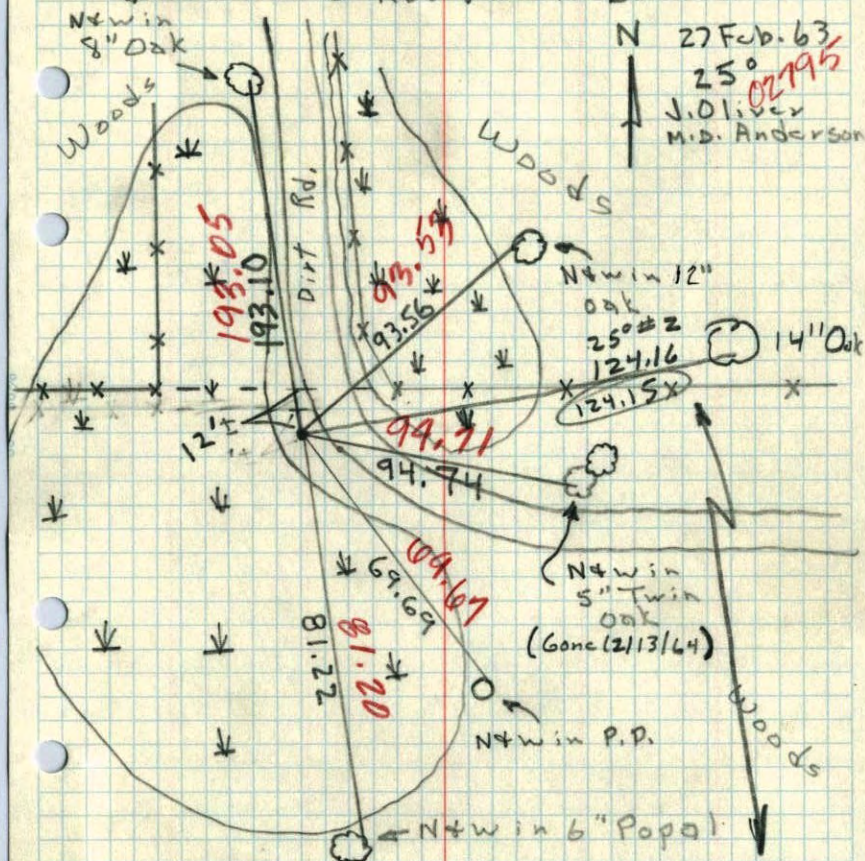


TEMPERATURE CORRECTED AND HORIZONTALLY TAPED MEASUREMENTS  
ANDOLAND W. ANDERSON  
COUNTY SURVEYOR  
ANOKA COUNTY, MINNESOTA

W 1/4 Cor. Sec. 2, T 32, R 24

SBT 3/4" x 6' I.P. from Resurvey.

Top 2.5' sticking up and painted with  
alternate 6" Red & White Bands.



This new tie  
taken 2/13/64 when  
old I.P., bent over  
by bulldozer, was  
found & replaced  
by 2" x 8' I.P.  
Oliver - Anderson