

# CERTIFICATE OF LOCATION OF GOVERNMENT CORNER

County of Anoka

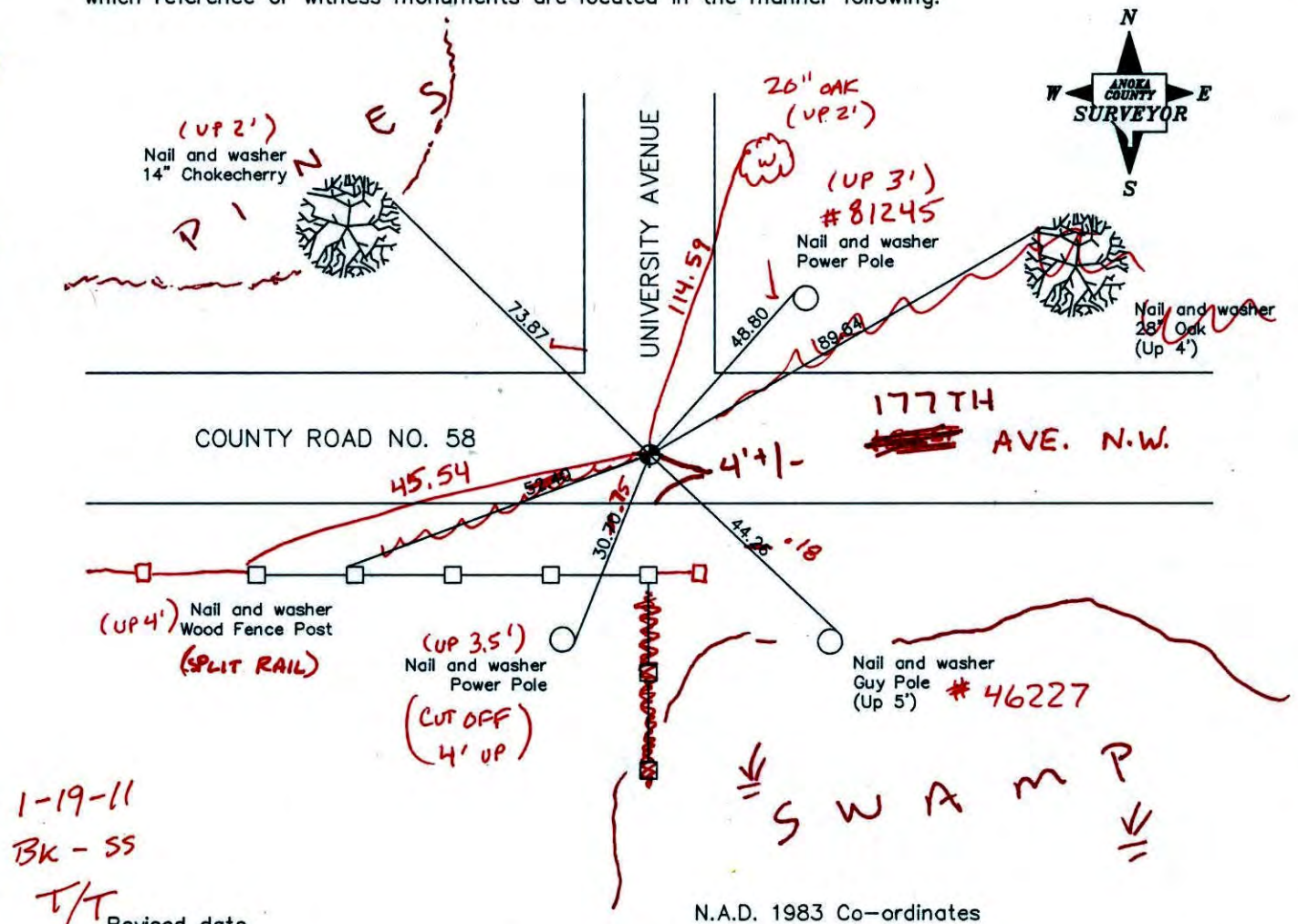
State of Minnesota

East 1/4 Corner of Sec. 1 Township 32 Range 24

I hereby certify that on the 25th day of September, 1962, I found the described corner which was evidenced by area resurvey

and I further certify that to perpetuate the location of said corner, I did, at the exact location thereof, place a permanent marker consisting of a cast iron monument ✓

which reference or witness monuments are located in the manner following:



1-19-11  
BK - SS  
T/T

Revised date

8/11/88
7/23/93
7/25/00

N.A.D. 1983 Co-ordinates

County Project Co-ordinates
Northing <u>193197.9195</u>
Easting <u>500359.1096</u>

State Plane Co-ordinates
Y _____
X _____

Date 7/25/00

# CERTIFICATE OF LOCATION OF GOVERNMENT CORNER

County of Anoka

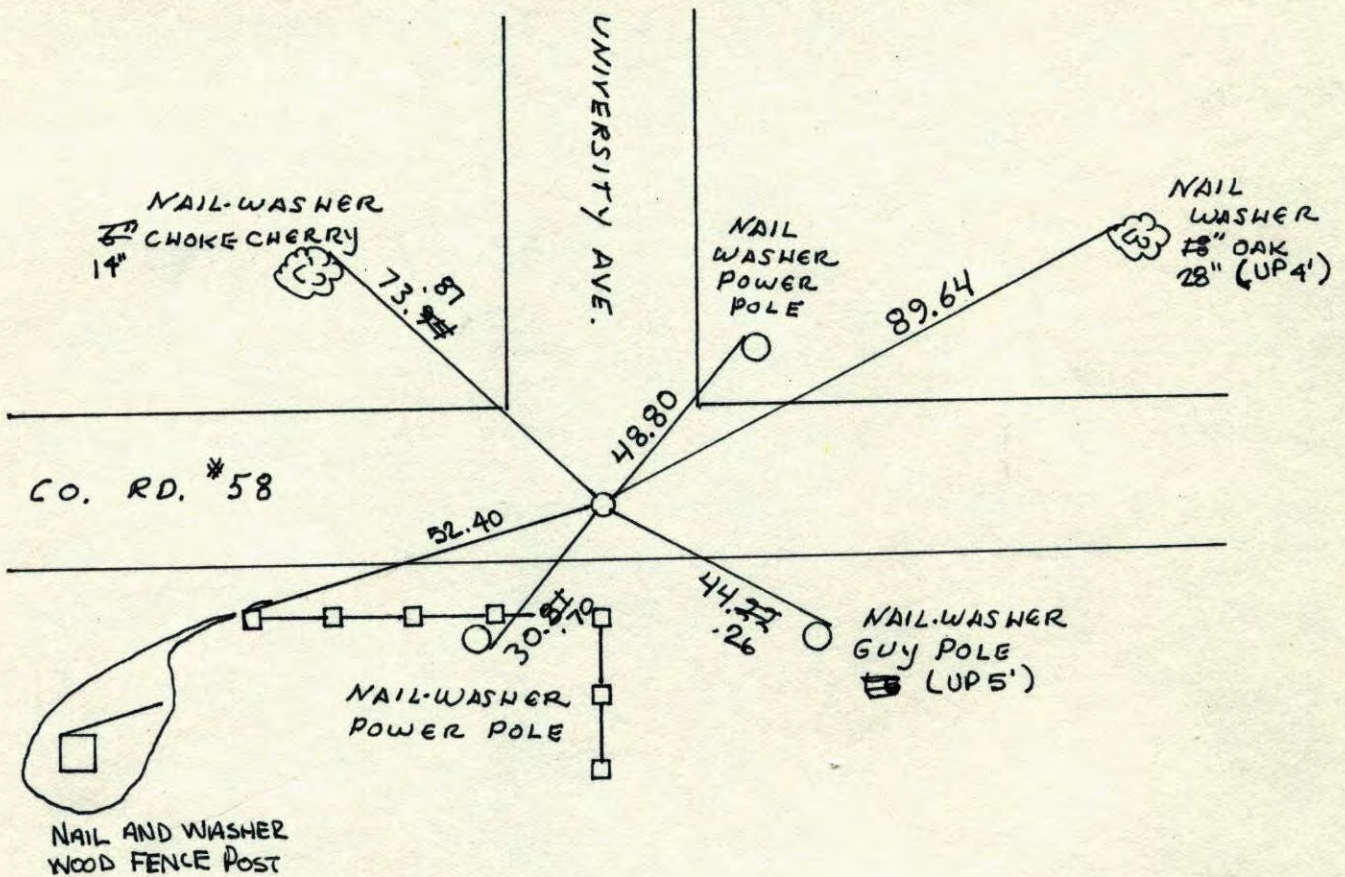
State of Minnesota

EAST 1/4 Corner of Sec. 1 Township 32 Range 24

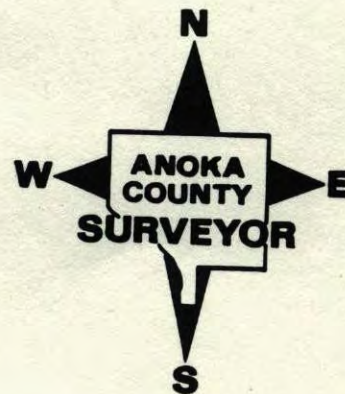
I hereby certify that on the 25<sup>th</sup> day of SEPT., 19 62, I found the described corner which was evidenced by AREA RESURVEY

and I further certify that to perpetuate the location of said corner, I did, at the exact location thereof, place a permanent marker consisting of CAST IRON MONUMENT

which reference or witness monuments are located in the manner following:



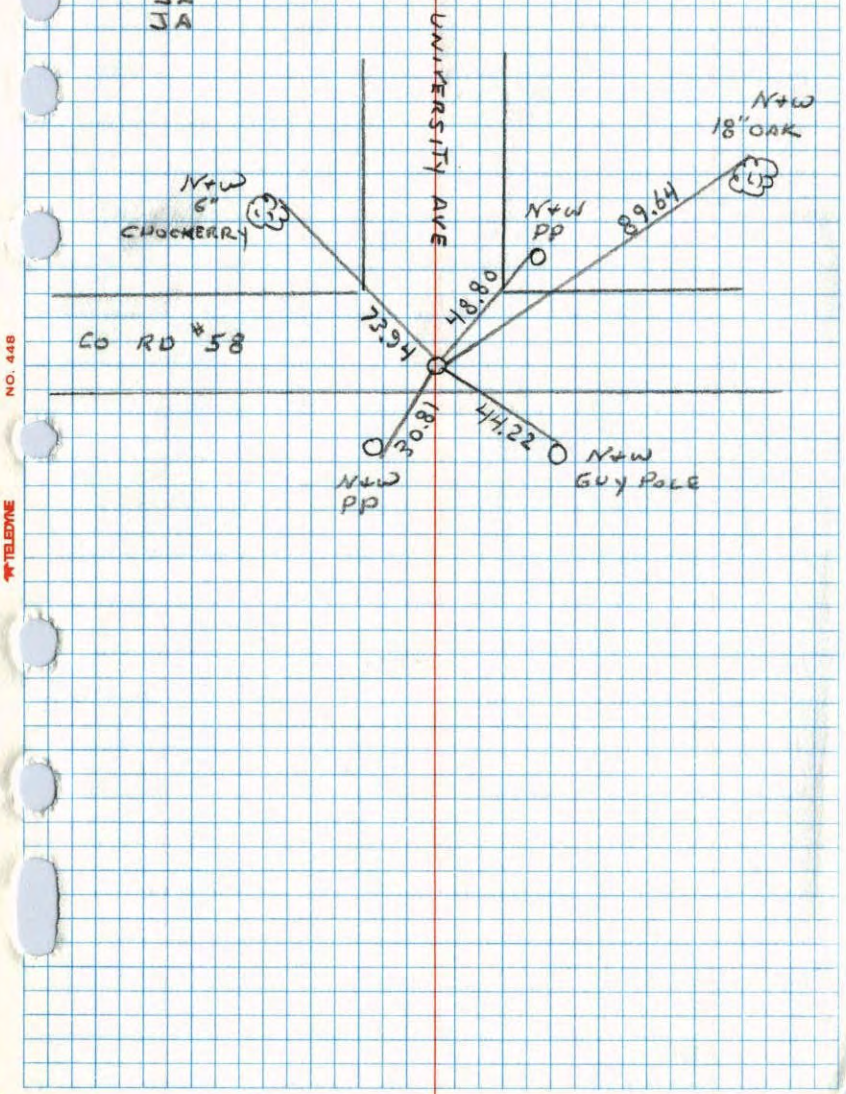
Revised date	Revised date	Revised date
6-22-82		
6-4-85		
8-11-88		
7-23-93		
7-25-00		



EAST 1/4 COR. SEC. 1 T32 R24

RETIRED CAST IRON

7-23-93  
JA  
JA

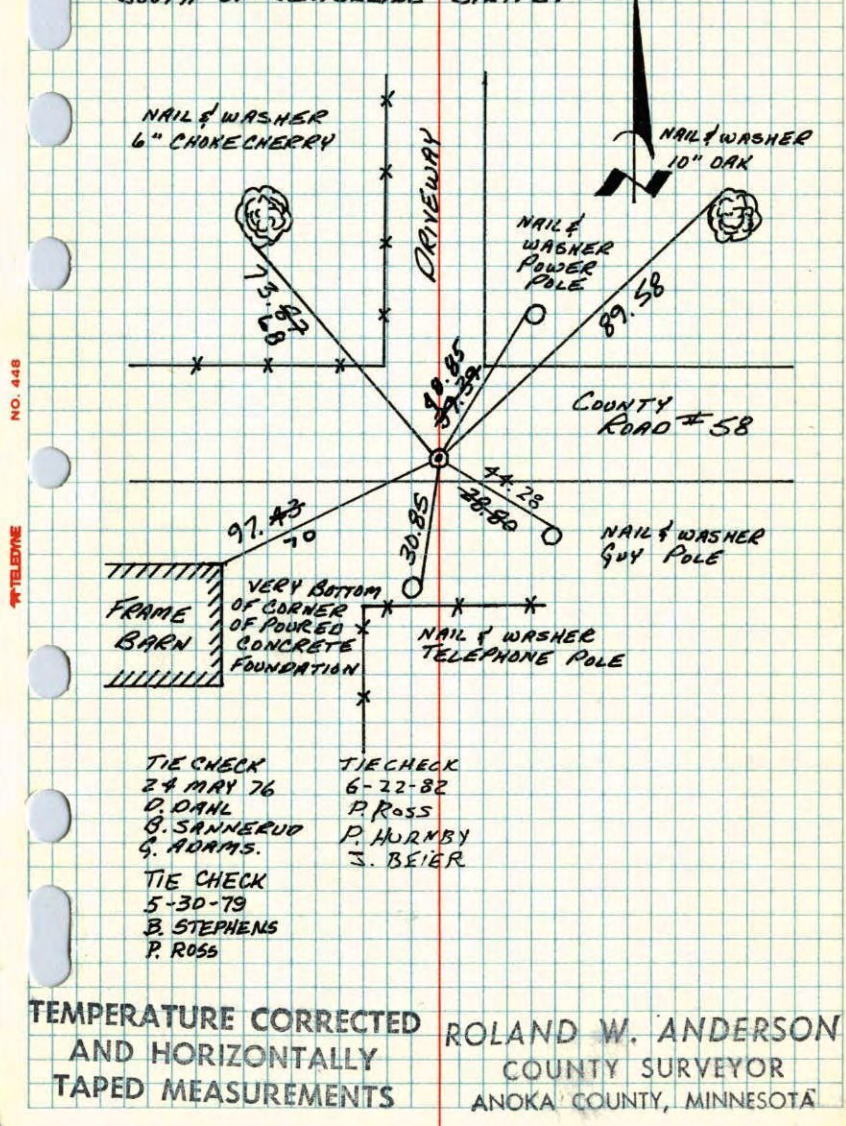


NO. 448

TELEPHONE

E 1/4 CORNER SECTION 1-T32-R24

SET CAST IRON MONUMENT FROM AREA RESURVEY.  
PK'S 2.00' NORTH AND EAST. CAST IRON IS 9.5'±  
SOUTH OF CENTERLINE STRIPE.



NO. 448

TELEPHONE

TIE CHECK  
24 MAY 76  
D. DANL  
B. SANNEUO  
G. ADAMS.

TIE CHECK  
5-30-79  
B. STEPHENS  
P. ROSS

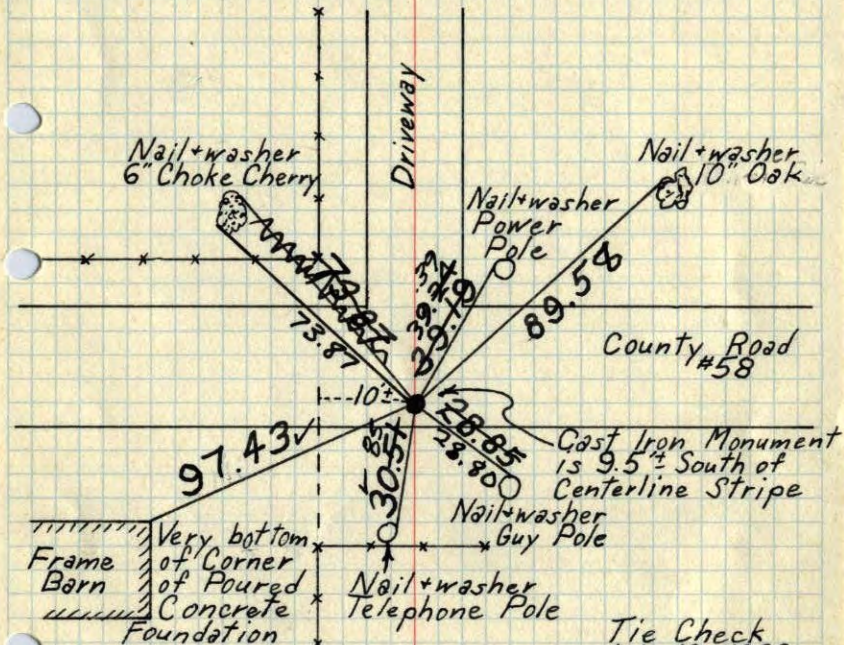
TIECHECK  
6-22-82  
P. ROSS  
P. HURNBY  
S. BEIER

TEMPERATURE CORRECTED  
AND HORIZONTALLY  
TAPED MEASUREMENTS

ROLAND W. ANDERSON  
COUNTY SURVEYOR  
ANOKA COUNTY, MINNESOTA

E 1/4 Cor. Sec. 1 - T32 - R24

Set Cast Iron Monument from Resurvey  
P.K.'s North & East



Tie Check  
6/15/72  
B. Olson  
J. Boettcher  
R. Bauer

TIE CHECK  
5-24-76  
D. ORHL  
B. SANNERUD  
& ADAMS

REDRAWN  
16 JAN 79  
RMG  
SEE NEW  
TIE BOOK

Tie Check  
July 19, 1966  
B. Rogers  
D. Powell  
J. Berry

Tie Check  
July 12, 1968  
H. Larson  
R. Olson  
P. Pich

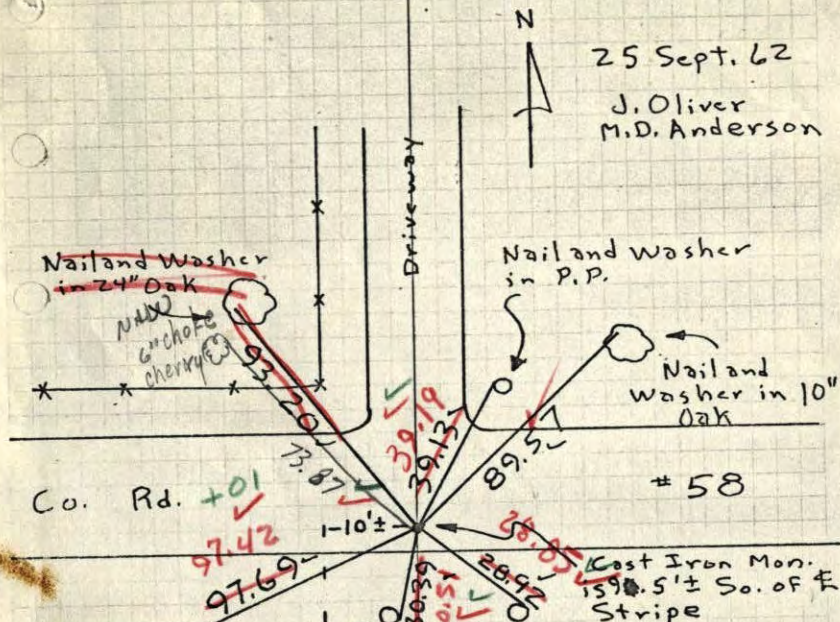
TEMPERATURE CORRECTED ROLAND W. ANDERSON  
AND HORIZONTALLY COUNTY SURVEYOR  
TAPED MEASUREMENTS ANOKA COUNTY, MINNESOTA

E 1/4 Cor. Sec. 1, T32, R 24

Set Cast Iron Monument From Resurvey

25 Sept. 62

J. Oliver  
M.D. Anderson



Tie to Corner of  
Poured Conc.  
Foundation  
(Very bottom)

Ties checked  
Aug. 13, 1964  
M.D. Anderson  
J. Dunlop

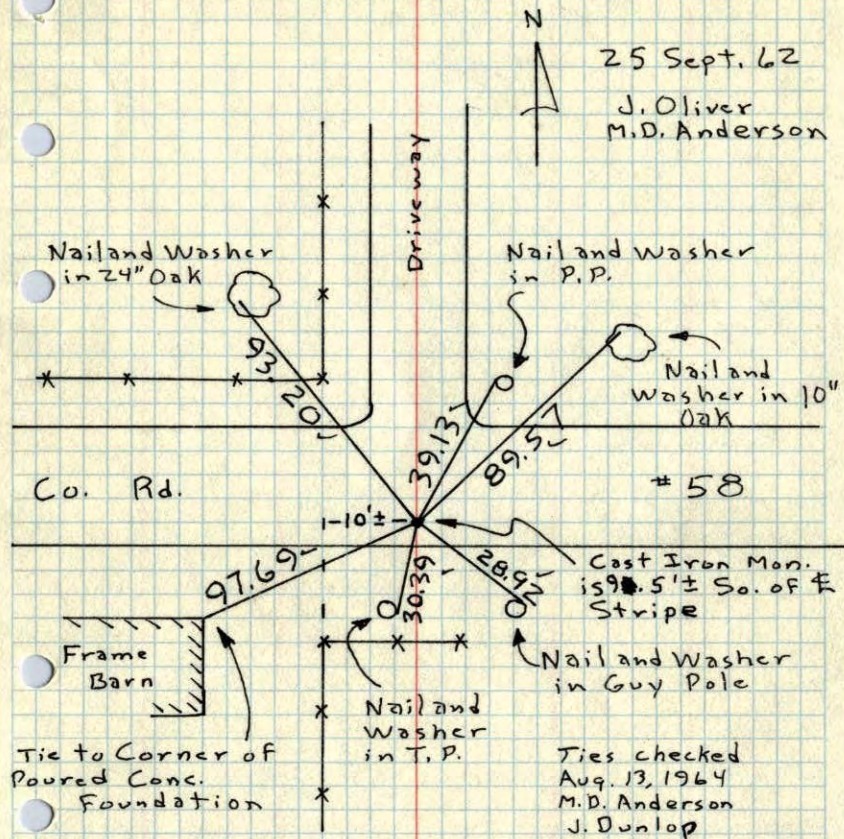
Ties checked  
7/19/66  
B. Rogers  
D. Powell  
J. Berry

TEMPERATURE CORRECTED  
AND HORIZONTALLY  
TAPED MEASUREMENTS

ROLAND W. ANDERSON  
COUNTY SURVEYOR  
ANOKA COUNTY, MINNESOTA

E 1/4 Cor. Sec. 1, T32, R24

Set Cast Iron Monument From Resurvey

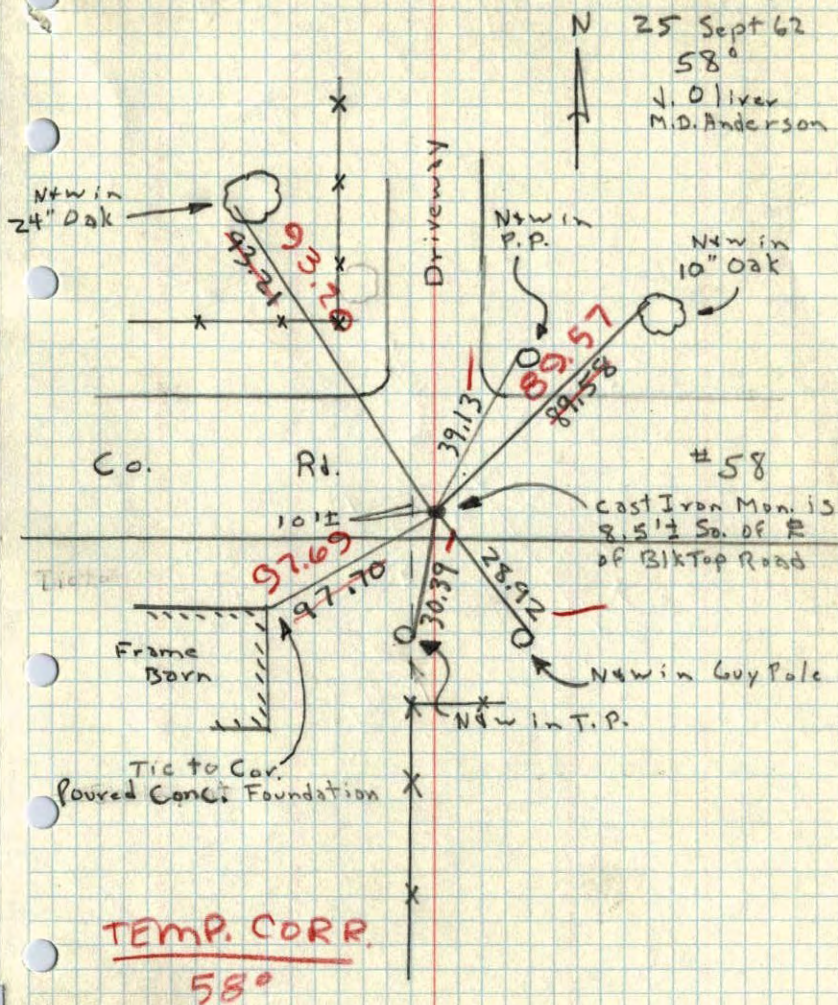


TEMPERATURE CORRECTED  
AND HORIZONTALLY  
TAPED MEASUREMENTS

ROLAND W. ANDERSON  
COUNTY SURVEYOR  
ANOKA COUNTY, MINNESOTA

5/4 Cor. Sec. 1, T32, R24

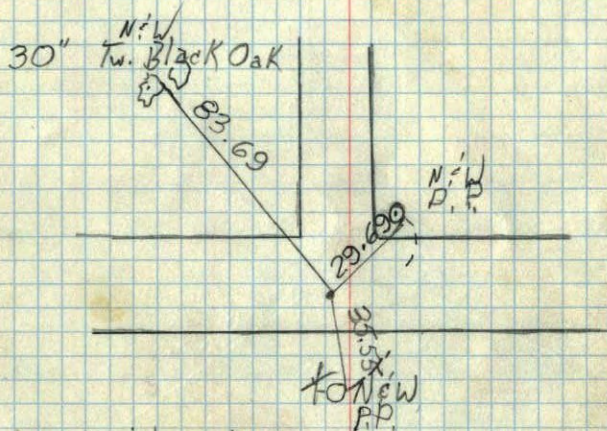
Set Cast Iron Monument From Resurvey



② E.  $\frac{1}{4}$  Corn. Sec. 1, T. 32, R. 24

These Ties Do not Come  
Together by 8.14

R.O. Freeman



nail in  
road which has been tied in  
by someone. (We retied)

TC

Nail is not  
the corner.

July 12, 1960

Temp. 80°

Richard Giddings

Ralph Robinson