

# CERTIFICATE OF LOCATION OF GOVERNMENT CORNER

County of Anoka

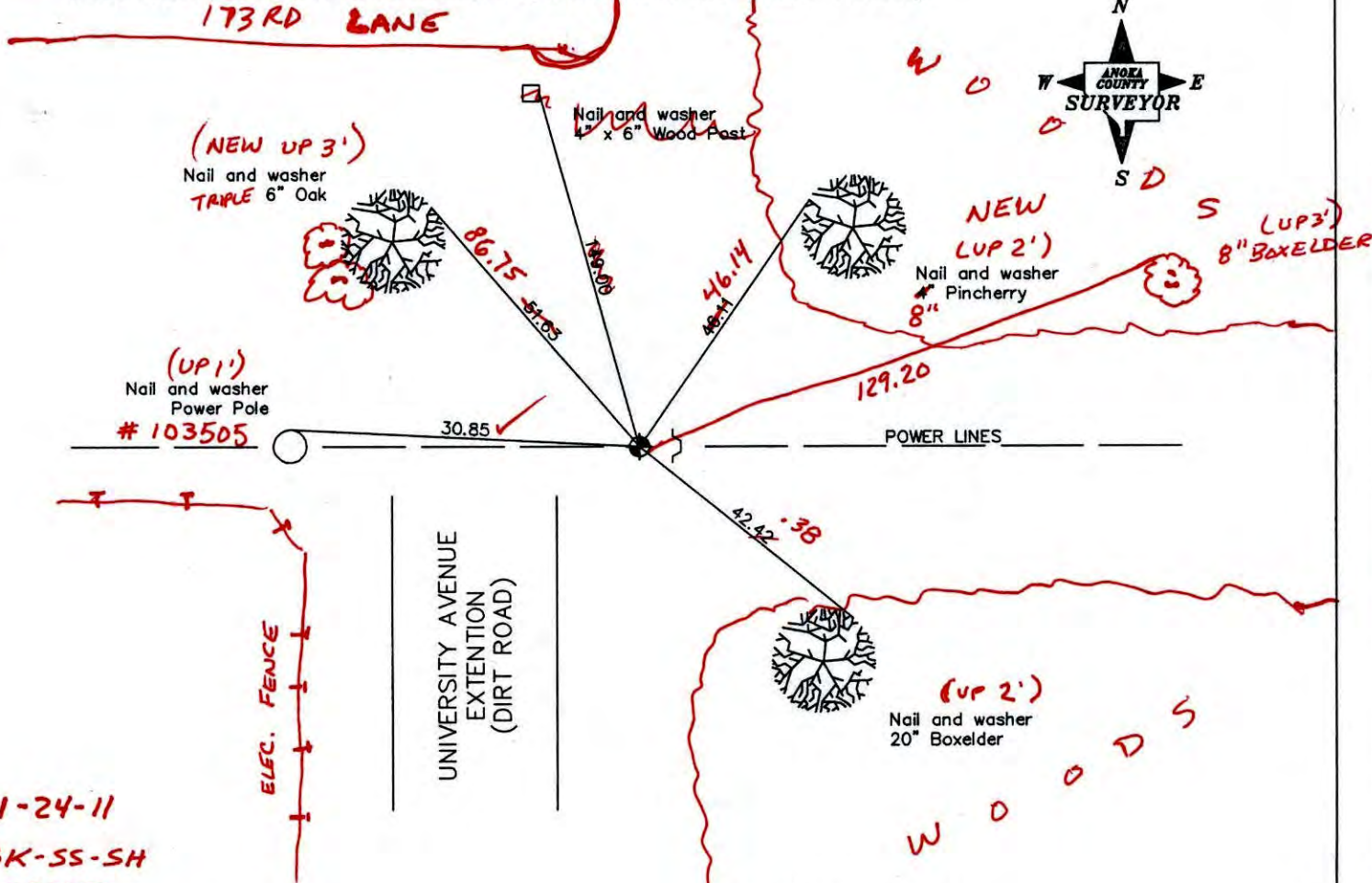
State of Minnesota

## Northeast Corner of Sec. 12 Township 32 Range 24

I hereby certify that on the 13th day of August, 1964, I found the described corner which was evidenced by a 1-1/2" iron pipe

and I further certify that to perpetuate the location of said corner, I did, at the exact location thereof, place a permanent marker consisting of a cast iron monument with sign and post on the east side ✓ (MAN DOWN 0.4')

which reference or witness monuments are located in the manner following:



N.A.D. 1983 Co-ordinates

1-24-11  
BK-SS-SH  
TAPED

Revised date

8/11/85
7/23/93
7/25/00

County Project Co-ordinates	State Plane Co-ordinates
Northing <u>190561.7543</u>	Y _____
Easting <u>500384.4272</u>	X _____

Date 7/25/00

# CERTIFICATE OF LOCATION OF GOVERNMENT CORNER

County of Anoka

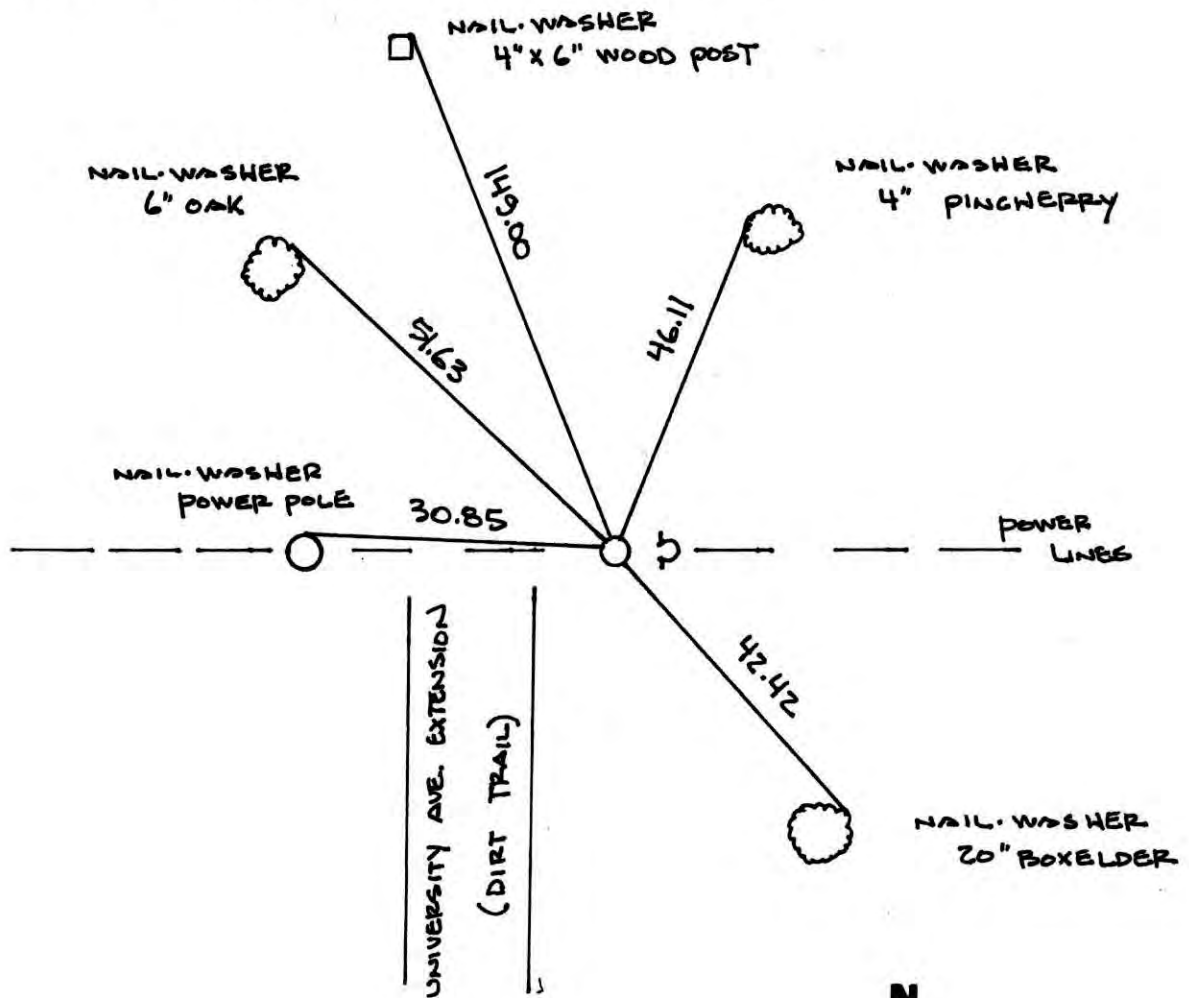
State of Minnesota

NORTHEAST Corner of Sec. 12 Township 32 Range 24

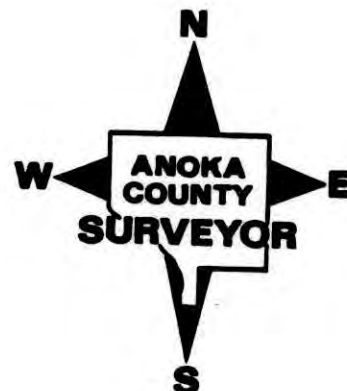
I hereby certify that on the 13<sup>TH</sup> day of AUGUST, 1964, I found the described corner which was evidenced by 1 1/2" IRON PIPE

and I further certify that to perpetuate the location of said corner, I did, at the exact location thereof, place a permanent marker consisting of CAST IRON MONUMENT  
SIGN & POST ON EAST SIDE

which reference or witness monuments are located in the manner following:

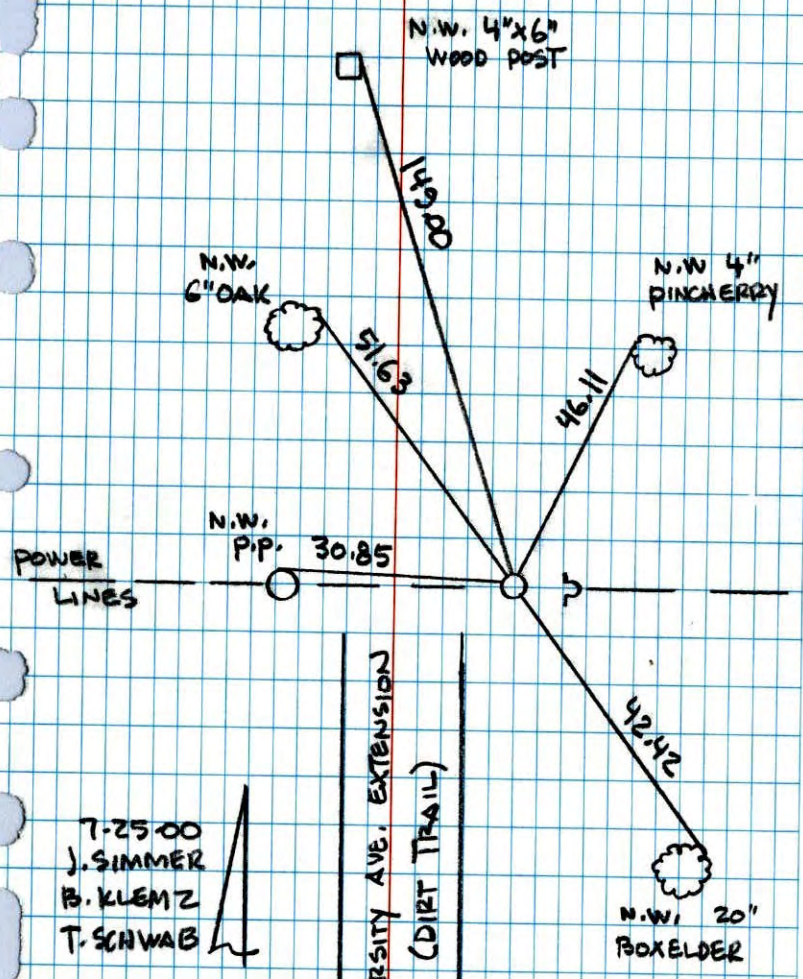


Revised date	Revised date	Revised date
8/11/85		
7/23/93		
7/25/00		





NORTHEAST COR. SEC 12 T 32 R 24  
RETIED & GPS CAST IRON MON.

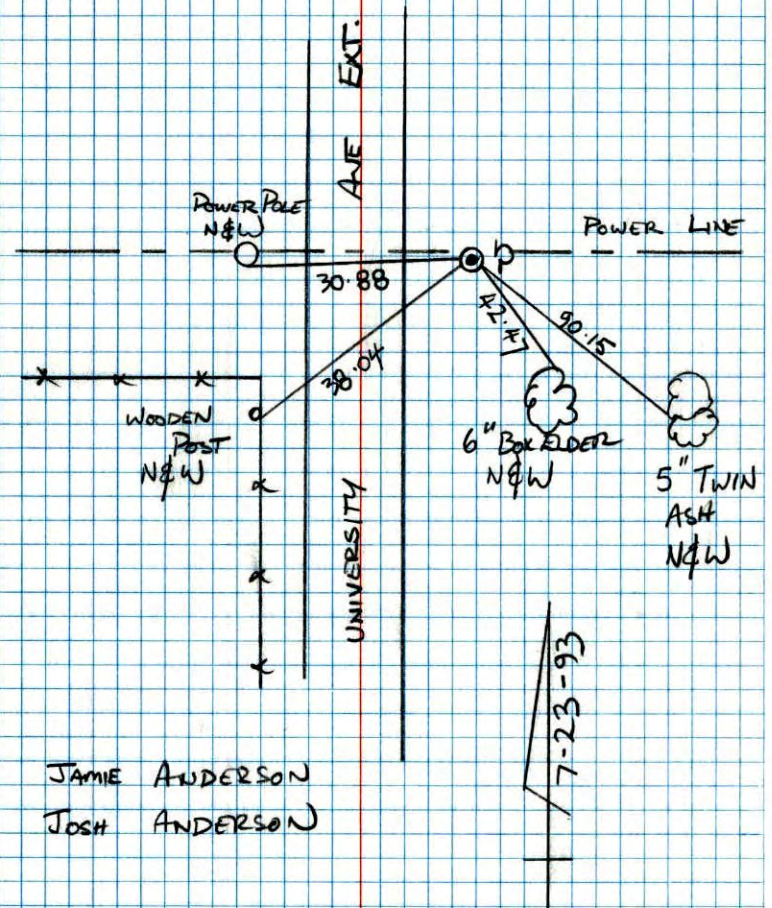


7-25-00  
J. SIMMER  
B. KLEMMZ  
T. SCHWAB

NO. 448  
NATIONAL FOREST

NORTHEAST SEC 12 T 32 R 24

RETIED CAST IRON MONUMENT  
WITH SIGN & POST ON EAST SIDE



JAMIE ANDERSON  
JOSH ANDERSON

NO. 448  
NATIONAL FOREST

7-23-93

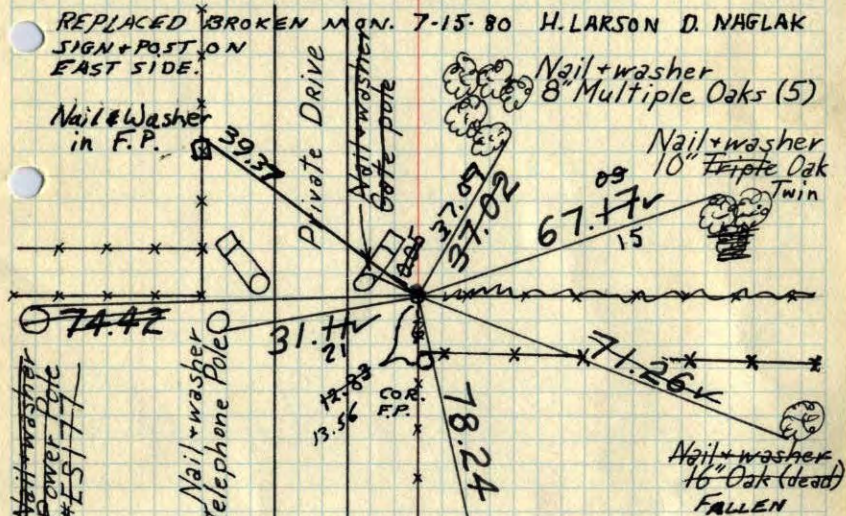


NE. Cor. Sec. 12 - T32-R24

Found 1 1/4" Iron Pipe from ties by N.C. Hoium

Corner, under transmission power lines and  
16'± East of centerline of driveway

SET CAST IRON MONUMENT 5-25-76 D.OAHL



Tie Check  
July 19, 1966  
B. Rogers  
D. Powell  
J. Berry

Tie Check  
July 12, 1968  
H. Larson  
R. Olson  
P. Pich

TIE CHECK  
6-22-82  
P. ROSS  
P. HORNBY  
S. BEIER

Nail & washer (Dead)  
20" Oak  
Tie Check  
6/12/72  
B. Olson  
J. Boettcher

TIE CHECK  
5-25-76  
D. OAHN  
B. SANMERUD  
G. ADAMS

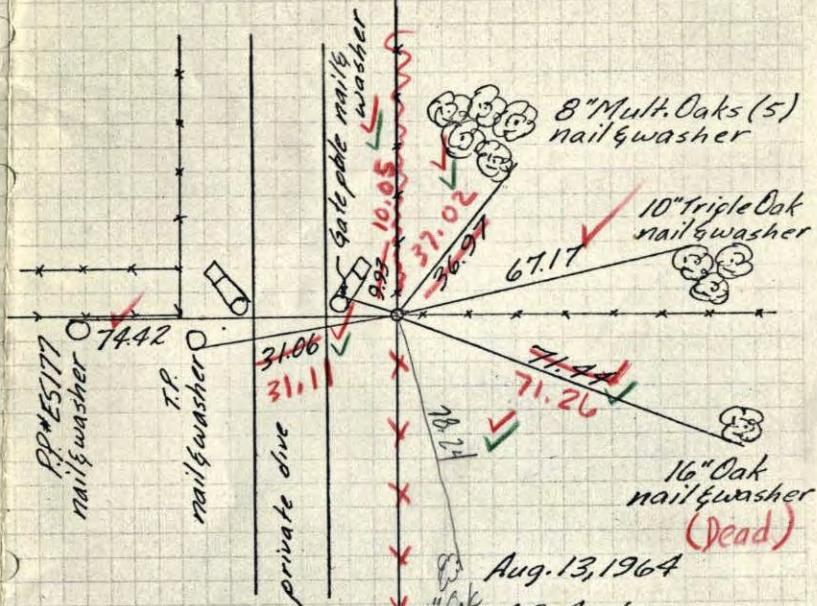
TEMPERATURE CORRECTED  
AND HORIZONTALLY  
TAPED MEASUREMENTS

ROLAND W. ANDERSON  
COUNTY SURVEYOR  
ANOKA COUNTY, MINNESOTA

N.E. Cor. Sec. 12-T32-R24

found 1 1/4" Iron pipe from ties by  
N.C. Hoium

Cor. under transmission power lines  
and 16'± east of E driveway



Ties checked  
7/19/66  
B. Rogers  
D. Powell  
J. Berry

July 1966  
#5  
75

Aug. 13, 1964  
M.D. Anderson  
J. Dunlap  
ROLAND W. ANDERSON  
COUNTY SURVEYOR  
ANOKA COUNTY, MINNESOTA

TEMPERATURE CORRECTED  
AND HORIZONTALLY  
TAPED MEASUREMENTS

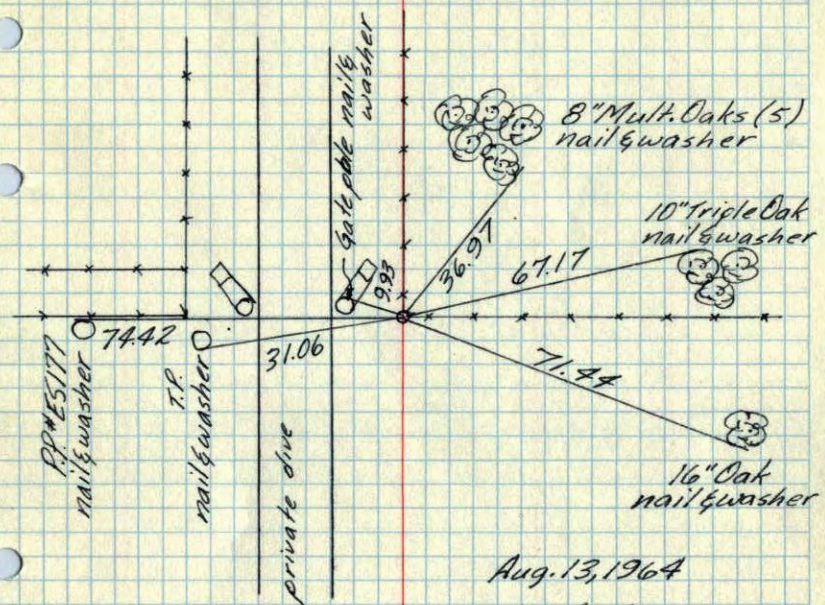




# N.E. Cor. Sec. 12-T32-R24

found 1 1/4" iron pipe from ties by N.C. Hoium

Cor. under transmission power lines and 16' east of E driveway



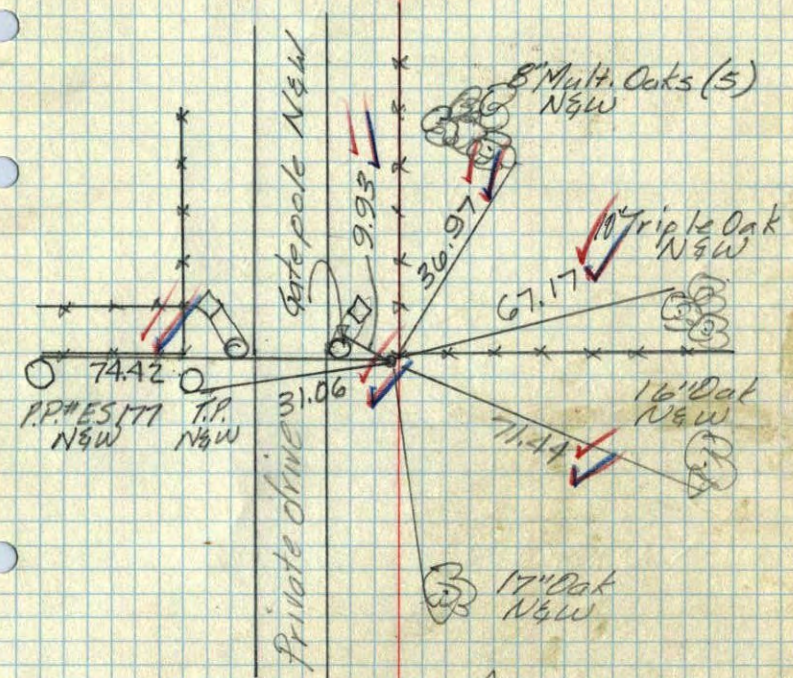
Aug. 13, 1964  
M.D. Anderson  
J. Dunlap

**ROLAND W. ANDERSON**  
COUNTY SURVEYOR  
ANOKA COUNTY, MINNESOTA  
**TEMPERATURE CORRECTED  
AND HORIZONTALLY  
TAPED MEASUREMENTS**

# N.E. Cor. Sec. 12-T32-R24

found 1 1/4" iron pipe from ties by N.C. Hoium

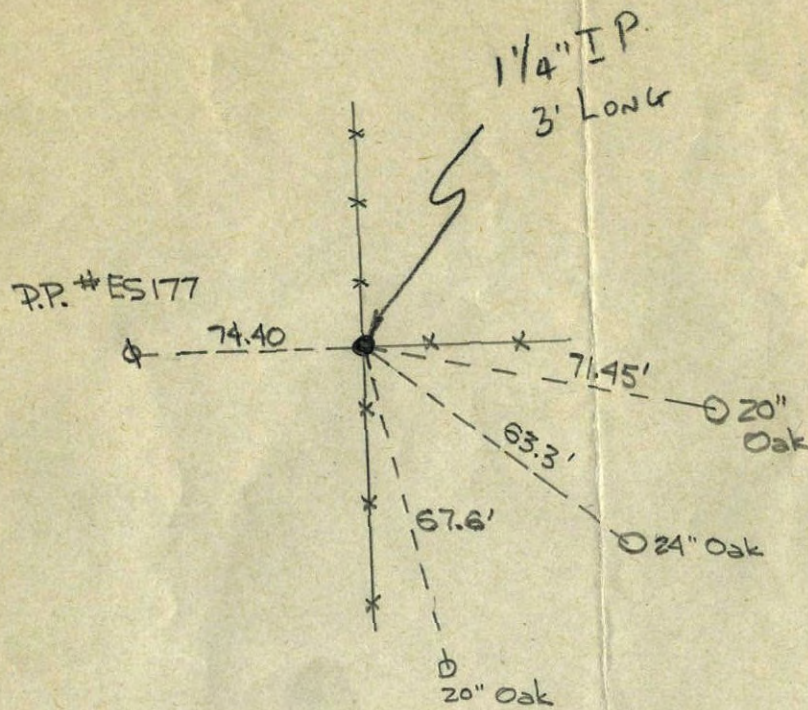
Cor. under transmission power lines & 16' east of E driveway



Aug. 13, 1964  
M.D. Anderson  
J. Dunlap  
Temp. 69° —  
Tape #1 —



N.E. COR. OF SEC. 12, T. 22, R. 24



6/23/60

N.C. Hoium & Assoc.

May 1960