

CERTIFICATE OF LOCATION OF GOVERNMENT CORNER

County of Anoka

State of Minnesota

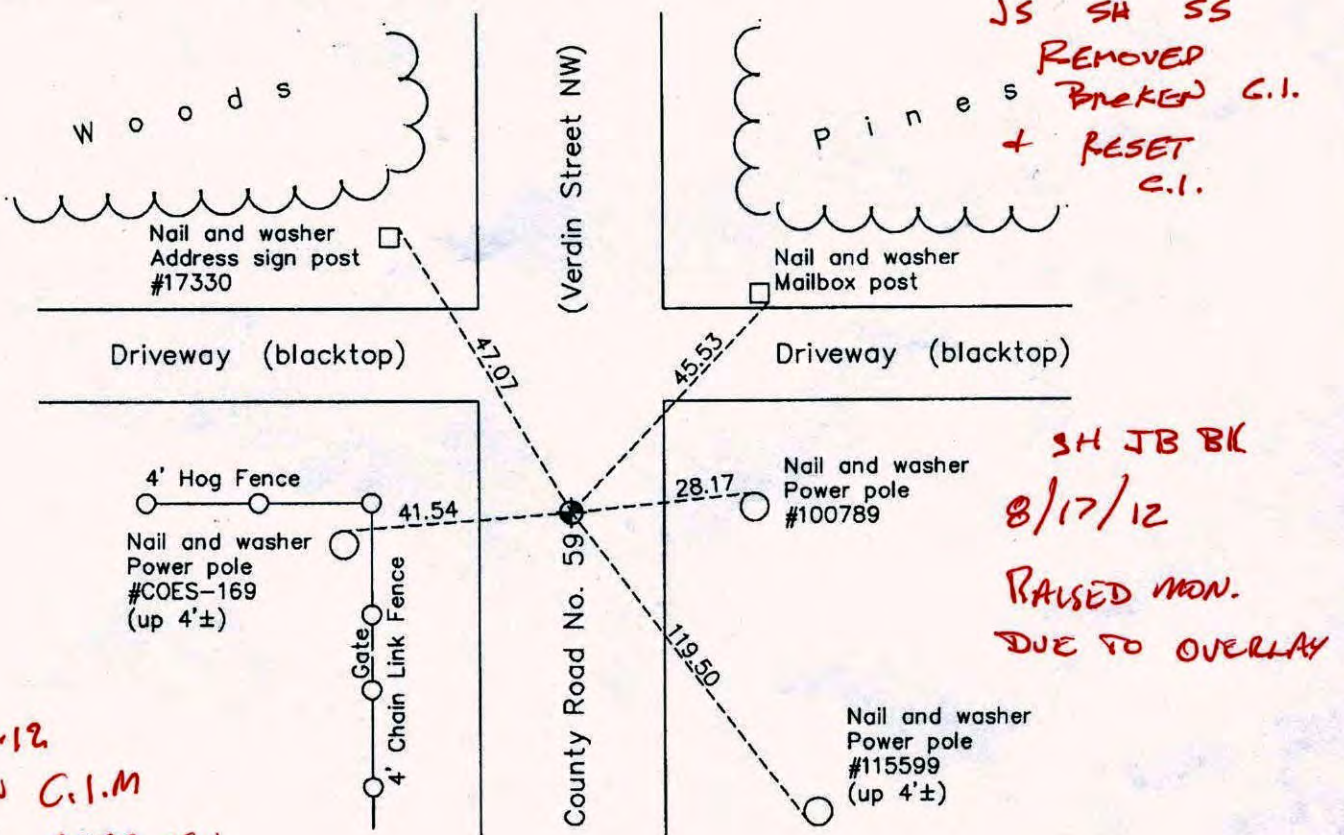
Southeast Corner of Sec. 4 Township 32 Range 24

On the 3rd day of November, 1961, the described corner was evidenced by area resurvey

and to perpetuate the location of said corner, at the exact location thereof, a permanent marker was placed consisting of a cast iron monument

AND on the 18th day of October, 2010, said permanent marker was found flush with the surface and the ties were updated

Updated reference ties are as shown below.



7-12-12
BROKEN C.I.M
7-13-12 STATIC FIN
JS SA



Revision Date
04/13/11

N.A.D. 1983 Coordinates
(1996 Adjustment)

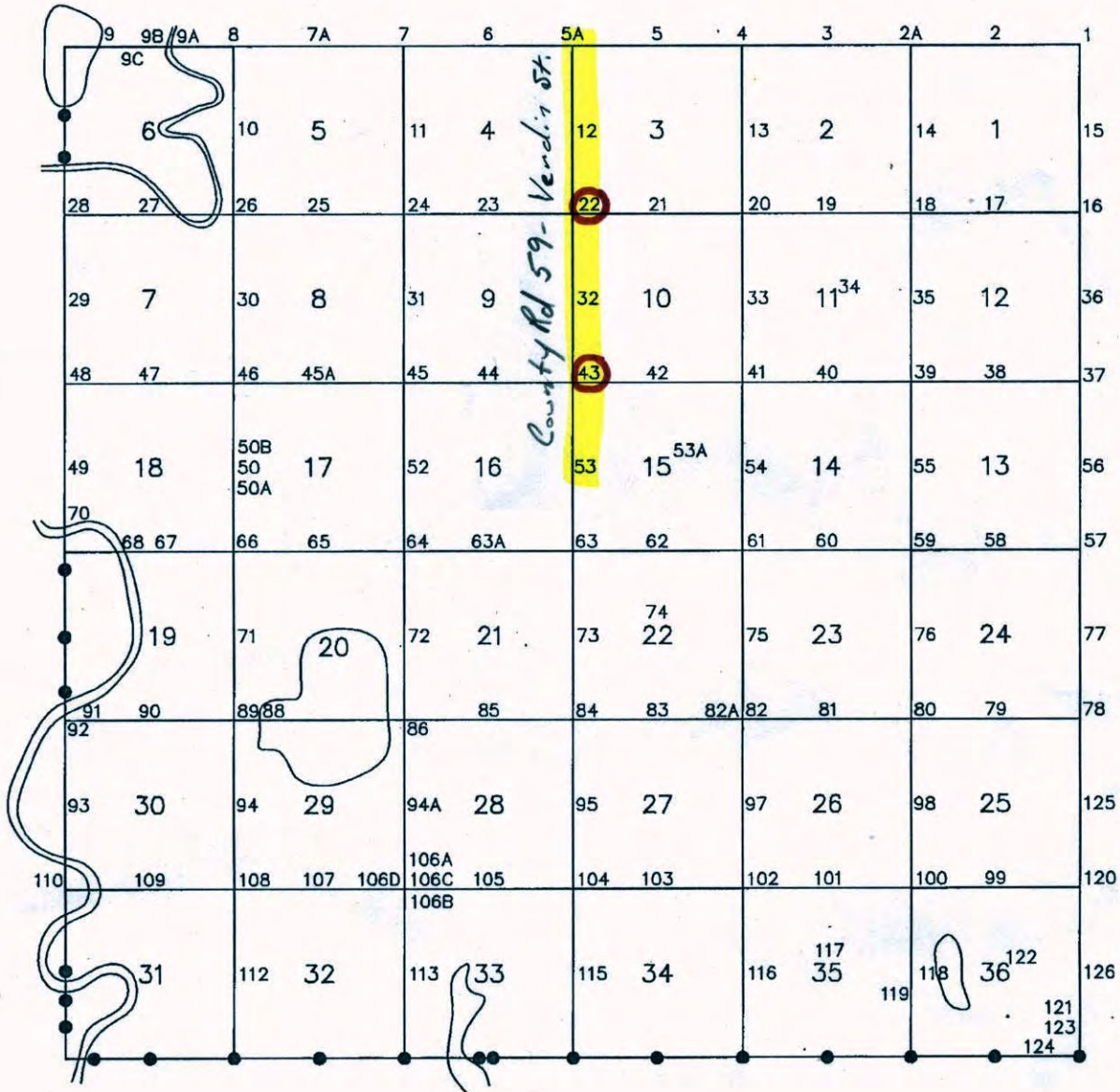
County Project Coordinates	
Northing	190756.5086
Easting	484630.8647
Date	7/13/00

I hereby certify that this United States public land survey monument record is correct and complete to the best of my knowledge and belief.

Larry D. Holium Date 4/13/11

Larry D. Holium, Anoka County Surveyor
Minnesota License Number 18165

ANDOVER T-32 R-24



CERTIFICATE OF LOCATION OF GOVERNMENT CORNER

County of Anoka

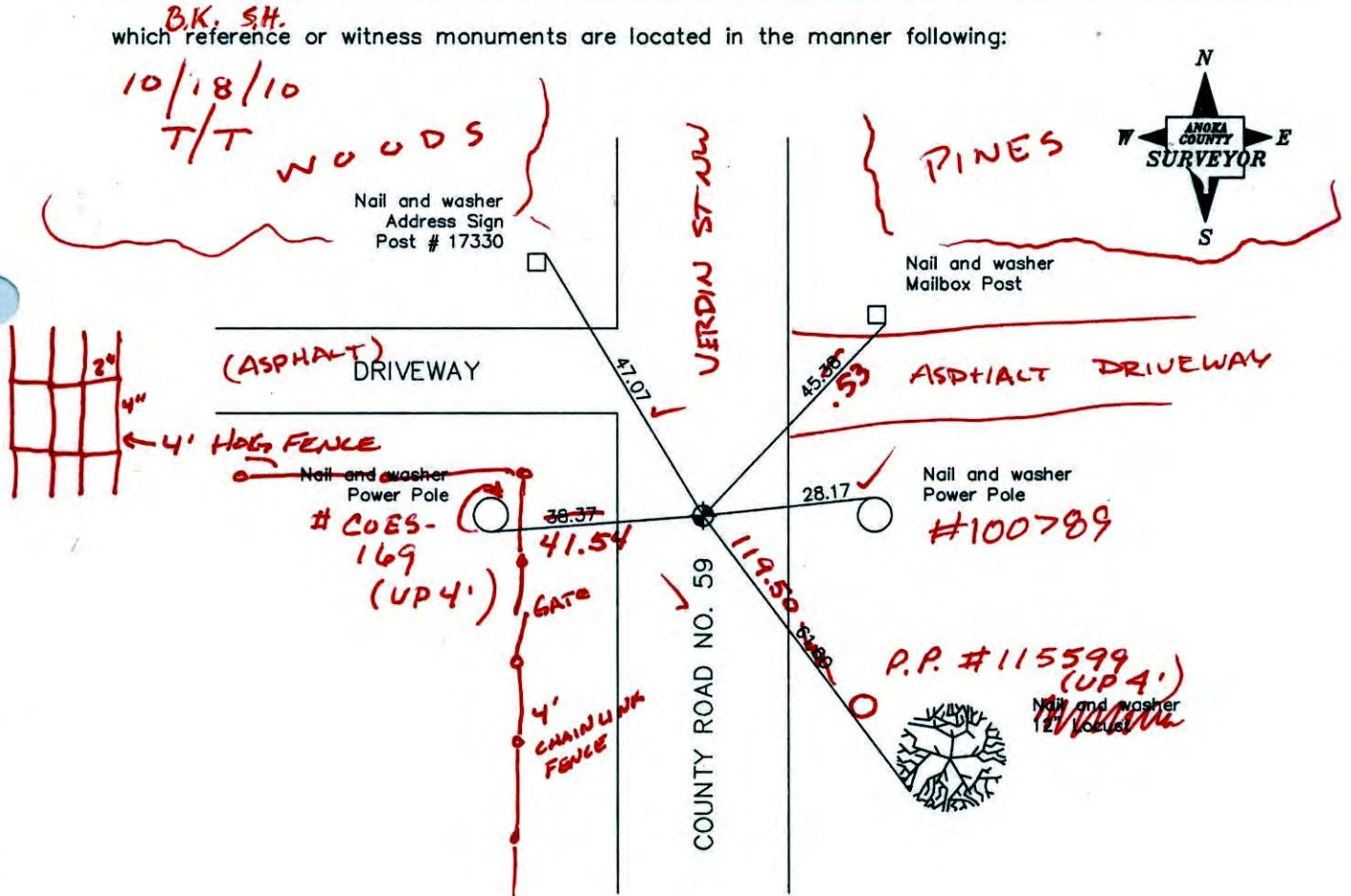
State of Minnesota

Southeast Corner of Sec. 4 Township 32 Range 24

I hereby certify that on the 3rd day of November, 1961, I found the described corner which was evidenced by area resurvey

and I further certify that to perpetuate the location of said corner, I did, at the exact location thereof, place a permanent marker consisting of a cast iron monument (FLUSH)

which reference or witness monuments are located in the manner following:



Revised date

7/26/93
5/12/97
7/13/00

N.A.D. 1983 Co-ordinates

County Project Co-ordinates	
Northing	<u>190756.5086</u>
Easting	<u>484630.8647</u>

State Plane Co-ordinates	
Y	_____
X	_____

Date 7/13/00

CERTIFICATE OF LOCATION OF GOVERNMENT CORNER

County of Anoka

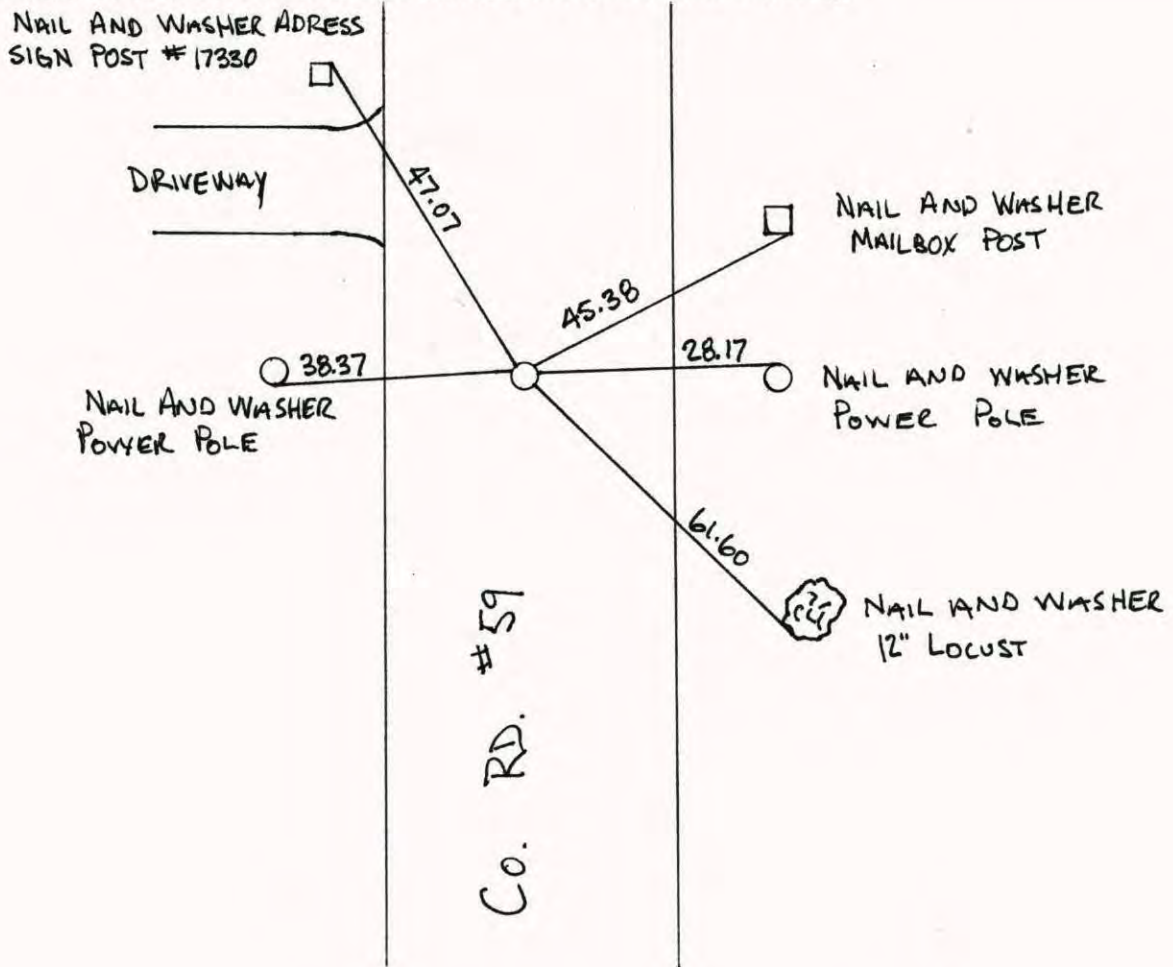
State of Minnesota

SOUTHEAST Corner of Sec. 4 Township 32 Range 24

I hereby certify that on the 3RD day of NOVEMBER, 19 61, I found the described corner which was evidenced by AREA RESURVEY

and I further certify that to perpetuate the location of said corner, I did, at the exact location thereof, place a permanent marker consisting of CAST IRON MONUMENT

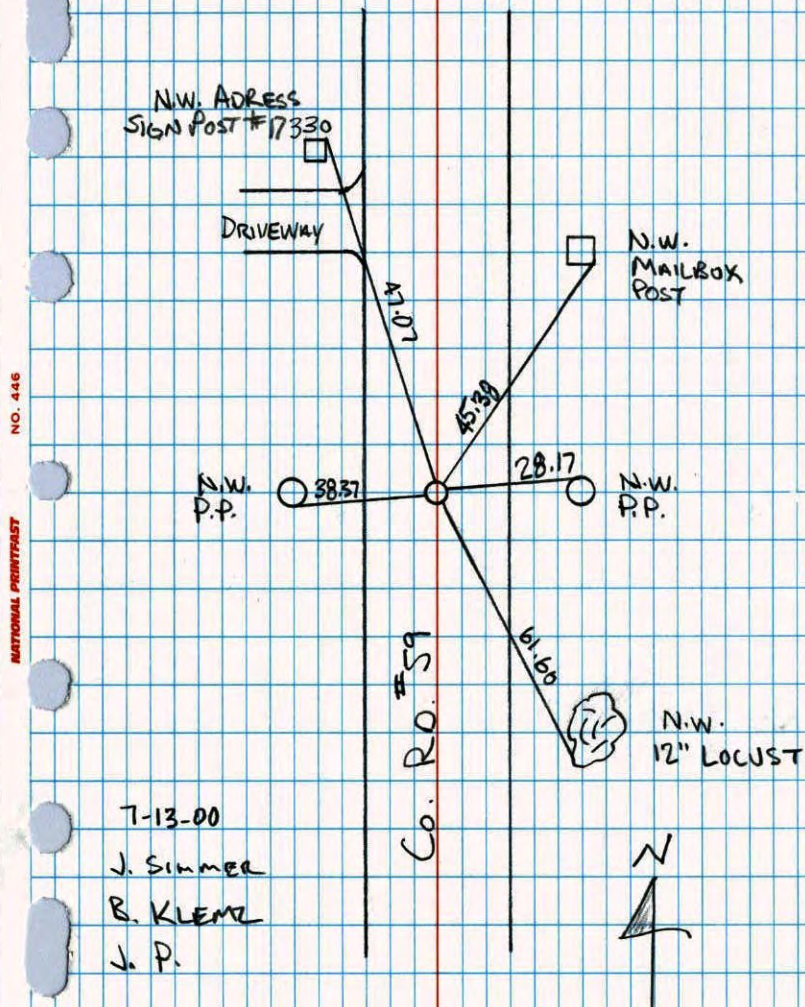
which reference or witness monuments are located in the manner following:



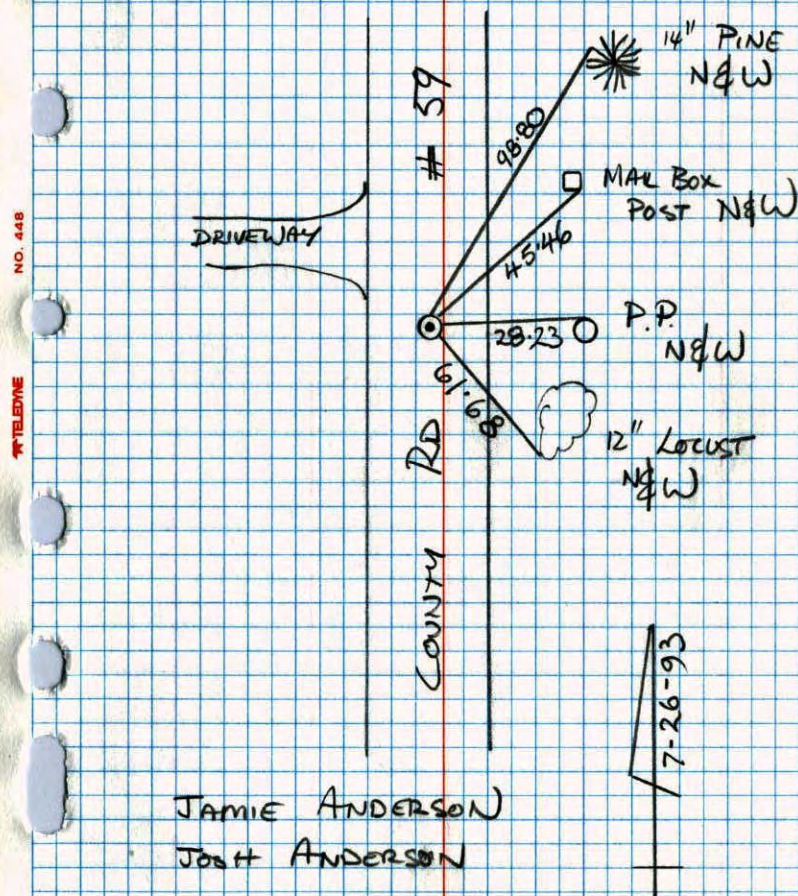
Revised date	Revised date	Revised date
7-29-88		
7-26-93		
5-12-97		
7-13-00		



SOUTHEAST COR. SEC. 4, T. 32, R. 24
 RETIED C.I.M. DURING G.P.S.

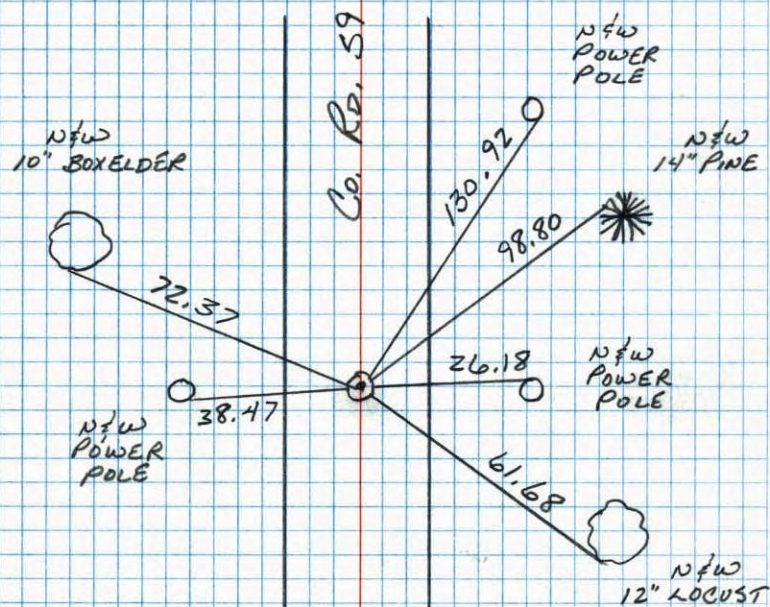


SOUTHEAST COR SEC 4 T 32 R 24
 RETIE CAST IRON MONUMENT



S.E. CORNER SEC 4 T32 R24

RETIRED CAST IRON MONUMENT



7-29-88
B. GUETZKO
A. SHROYER
M. PALI-H
80' 200' TAPE

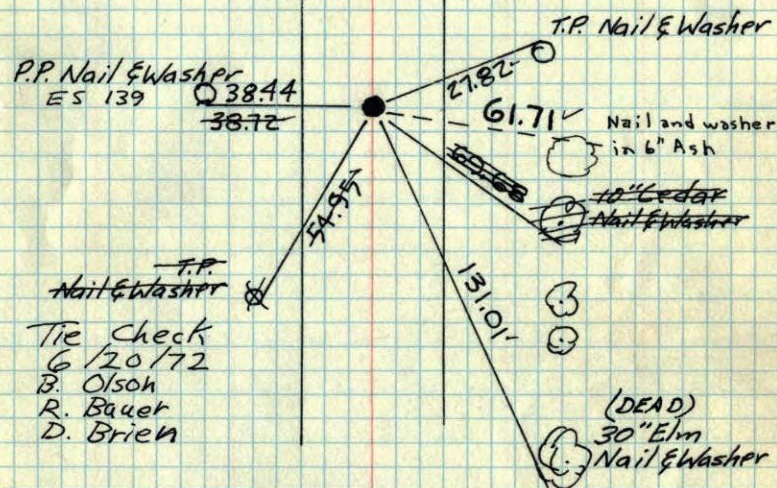
S.E. Cor. Sec. 4-32-24

Set Cast Iron Mon from old
survey dist's from N.E.E.

Mon. 5.0' ± S. of Pole line

Set Removable Cast Iron Mon.
P.K. spikes set 2' North & East.

RAISED CAST IRON MONUMENT



ROLAND W. ANDERSON
COUNTY SURVEYOR
ANOKA COUNTY, MINNESOTA

November 3, 1961

R.O. Freeman
M.D. Anderson

TEMPERATURE CORRECTED
AND HORIZONTALLY
TAPED MEASUREMENTS

Tie check
Aug. 19, 1964
M.D. Anderson
J. Dunlop

----- new ties			
Tie Check July 10, 1968 H. Larson R. Olson P. Piek	TIE CHECK 6-23-82 P. ROSS P. HORNBY J. BEIER	TIE CHECK MAY 27, 1976 D. DANL P. SPANNERUP G. ADAMS	TIE CHECK 5-30-79 B. STEPHENS P. ROSS

27 Sept 1961
Freeman Anderson
+ 58.7°

SE Cor Sec 4 - 32-24 - Grow Turn.
Set last Iron Mon from old Survey
dist. from the N. & E. Mon 50 ± So.
of Pole Line

