

CERTIFICATE OF LOCATION OF GOVERNMENT CORNER

County of Anoka

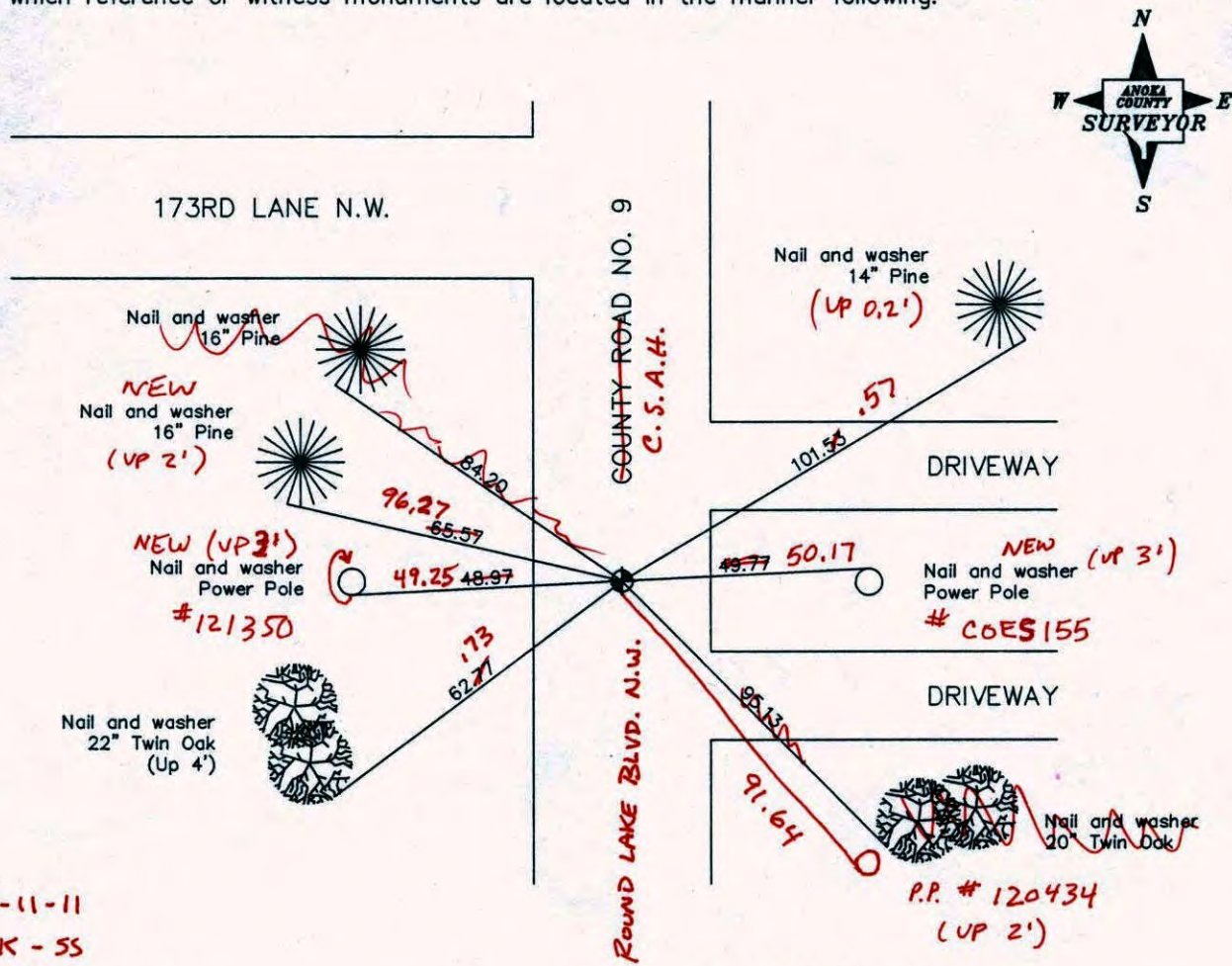
State of Minnesota

Southwest Corner of Sec. 4 Township 32 Range 24

I hereby certify that on the 7th day of July, 1960, I found the described corner which was evidenced by an iron pipe over a granite monument found by the Highway Department

and I further certify that to perpetuate the location of said corner, I did, at the exact location thereof, place a permanent marker consisting of a cast iron monument ✓

which reference or witness monuments are located in the manner following:



2-11-11
BK - 55
T/S Revised date

N.A.D. 1983 Co-ordinates

8/10/88
7/15/93
8/7/00

County Project Co-ordinates	State Plane Co-ordinates
Northing <u>190860.7229</u>	Y _____
Easting <u>479356.7043</u>	X _____

Date 8/7/00

SOUTHWEST COR. SEC 4 T 32 R 24

RETIED & PULLED CAST IRON
FOR CONST.

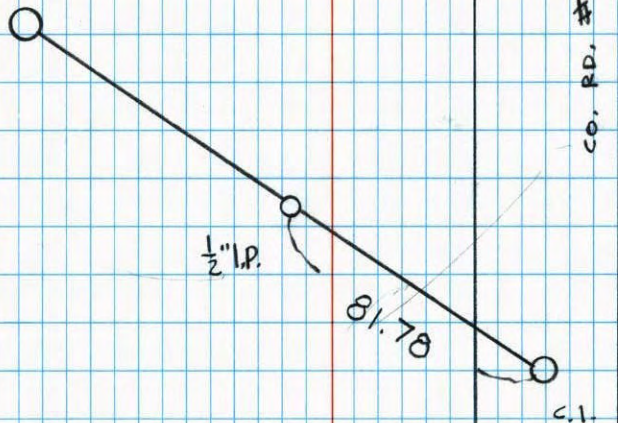


7-19-01
J. SIMMER
B. KLEMEZ

NO. 446

NATIONAL PRINTFAST

P.K. IN FACE
P.P.



CO. RD. # 9

C.I.

CERTIFICATE OF LOCATION OF GOVERNMENT CORNER

County of Anoka

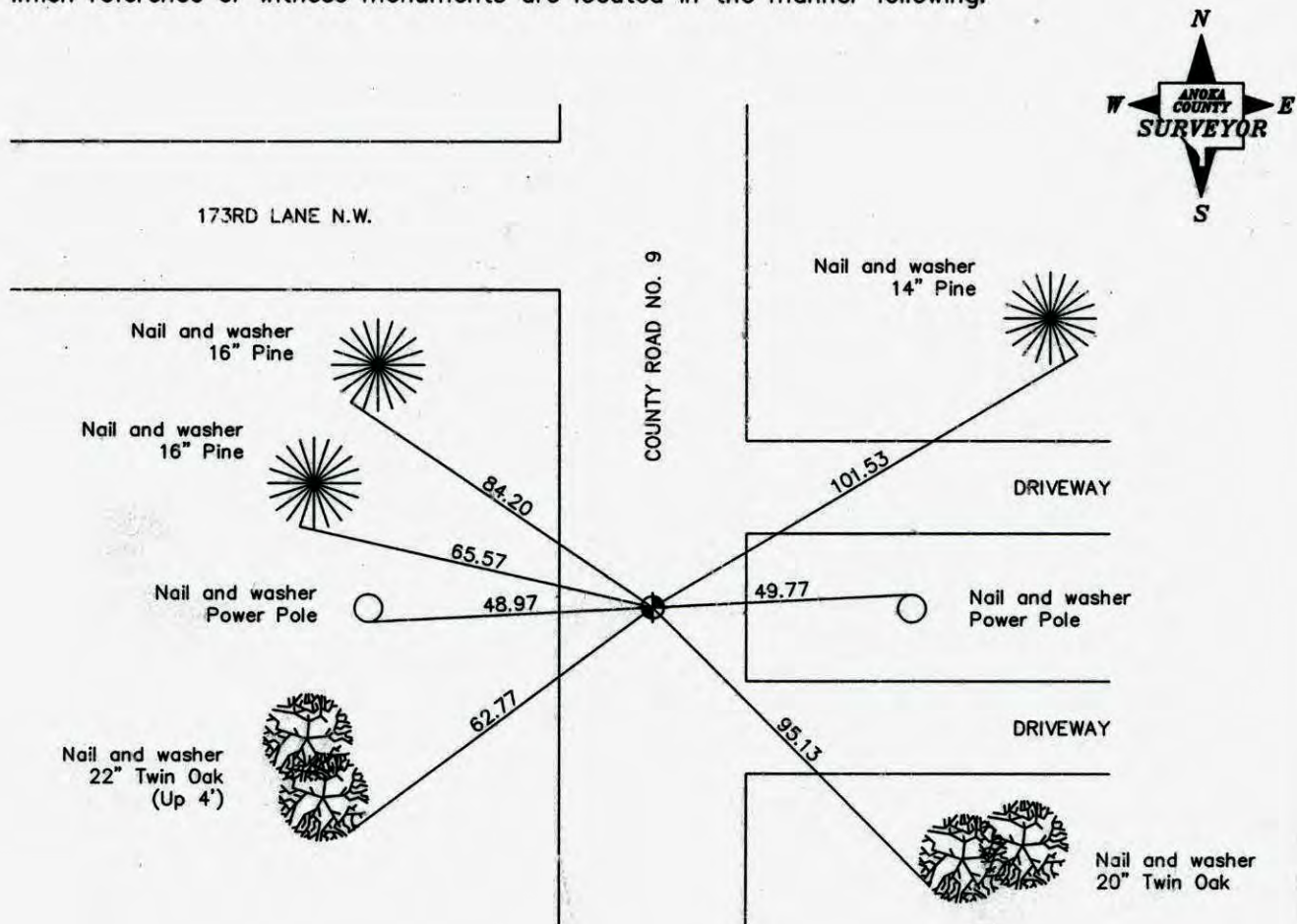
State of Minnesota

Southwest Corner of Sec. 4 Township 32 Range 24

I hereby certify that on the 7th day of July, 1960, I found the described corner which was evidenced by an iron pipe over a granite monument found by the Highway Department

and I further certify that to perpetuate the location of said corner, I did, at the exact location thereof, place a permanent marker consisting of a cast iron monument

which reference or witness monuments are located in the manner following:



Revised date

5/29/85
8/10/88
7/15/93
8/7/00

N.A.D. 1983 Co-ordinates

County Project Co-ordinates Northing _____ Easting _____	State Plane Co-ordinates Y _____ X _____
--	--

Date _____

CERTIFICATE OF LOCATION OF GOVERNMENT CORNER

County of Anoka

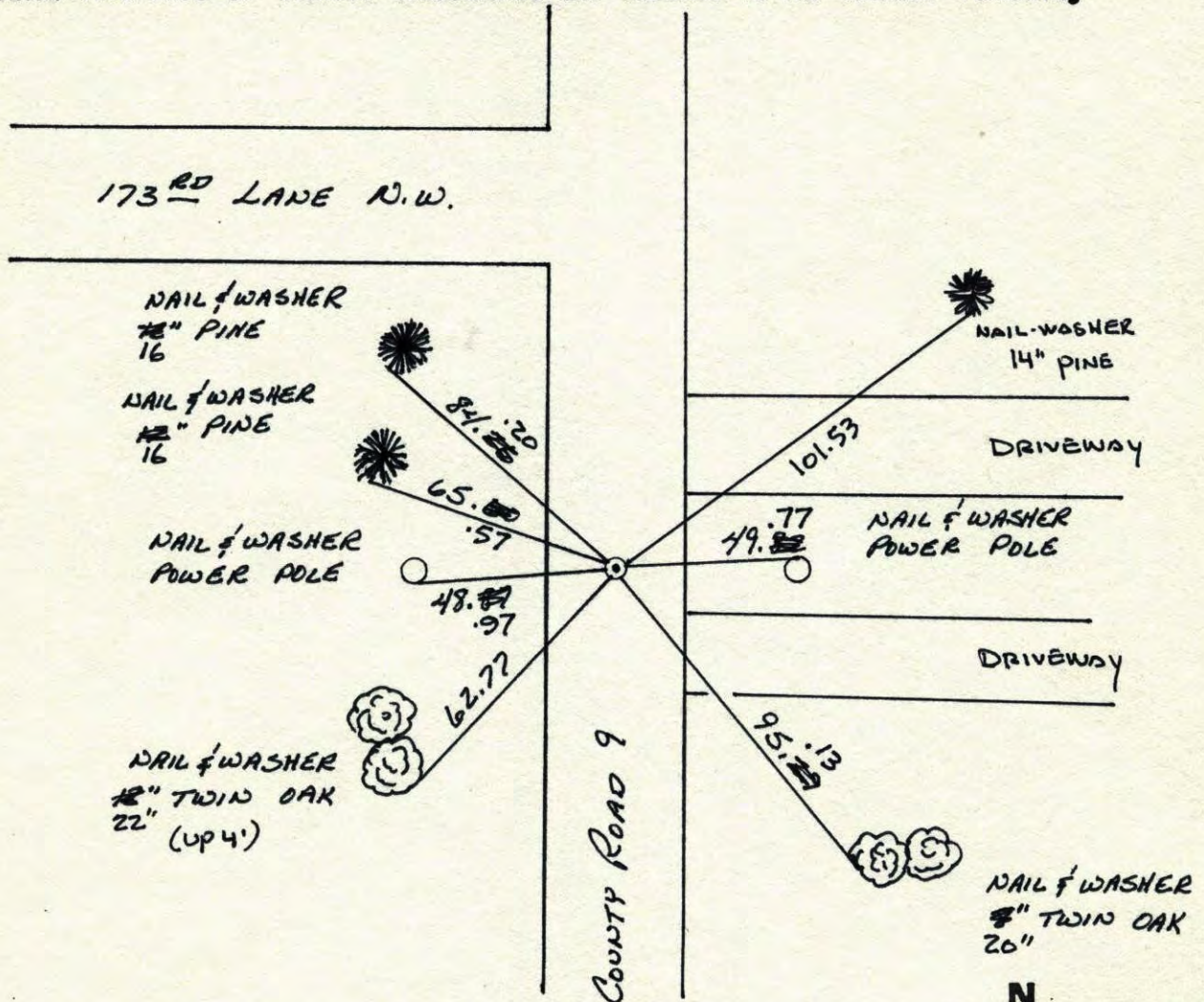
State of Minnesota

SOUTHWEST Corner of Sec. 4 Township 32 Range 24

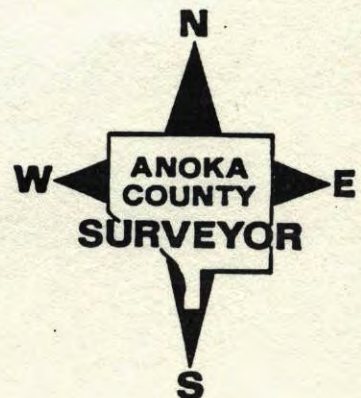
I hereby certify that on the 7 day of JULY, 1960, I found the described corner which was evidenced by IRON PIPE OVER GRANITE MONUMENT FOUND BY HIGHWAY DEPARTMENT

and I further certify that to perpetuate the location of said corner, I did, at the exact location thereof, place a permanent marker consisting of CAST IRON MONUMENT

which reference or witness monuments are located in the manner following:

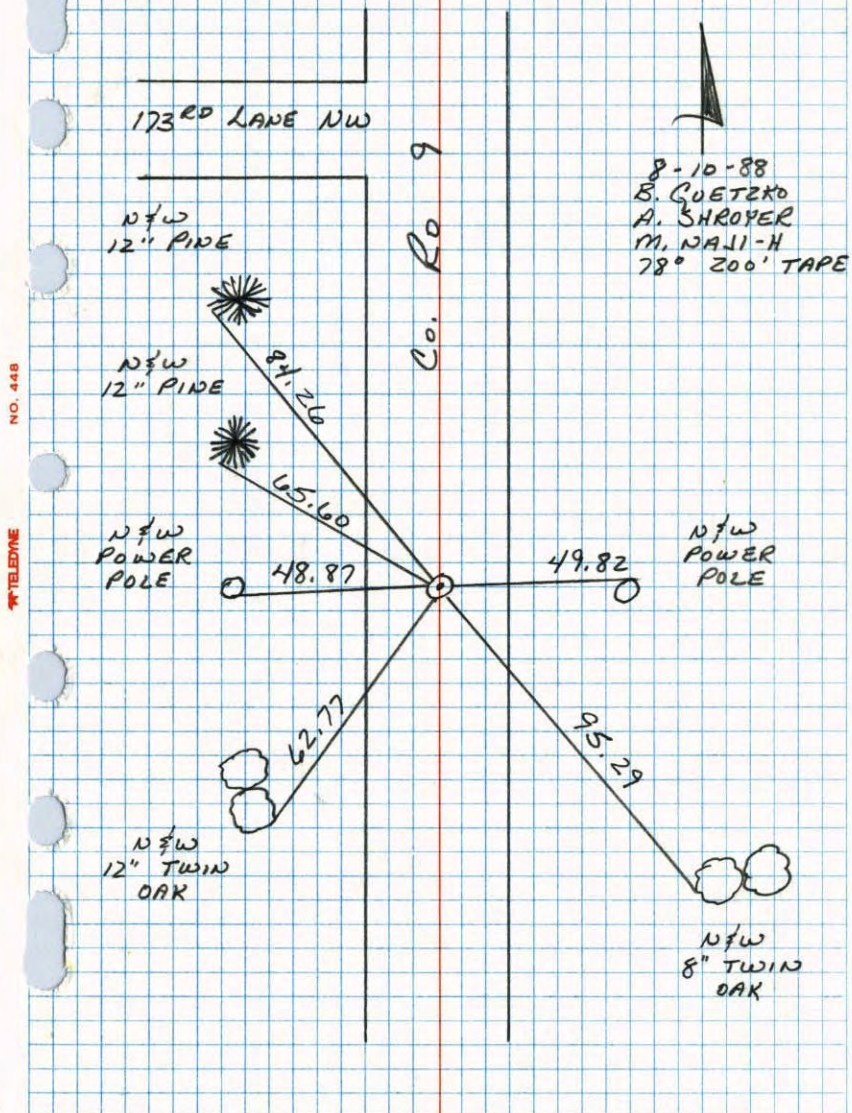


Revised date	Revised date	Revised date
9-3-82		
5-29-85		
8-10-88		
7-15-93		
8-7-00		



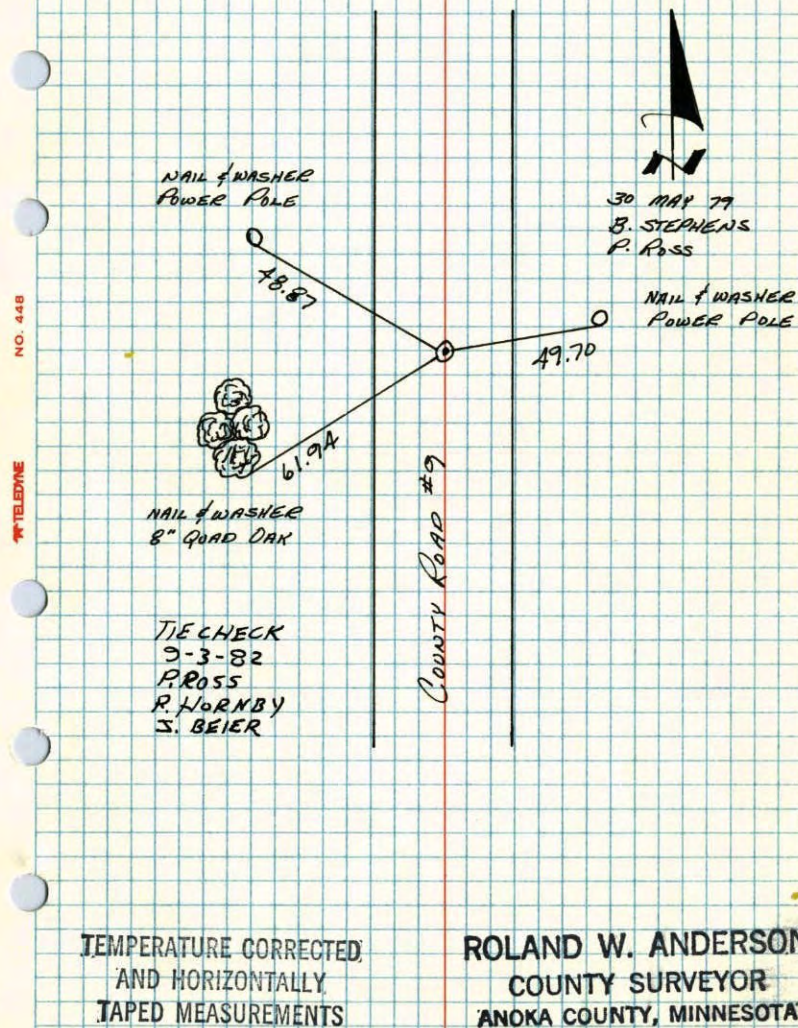
S.W. CORNER SEC 4 T32 R24

RETIED CAST IRON MONUMENT.



SW CORNER SECTION 4-T32-R24

CAST IRON MONUMENT DOWN 0.4'±.

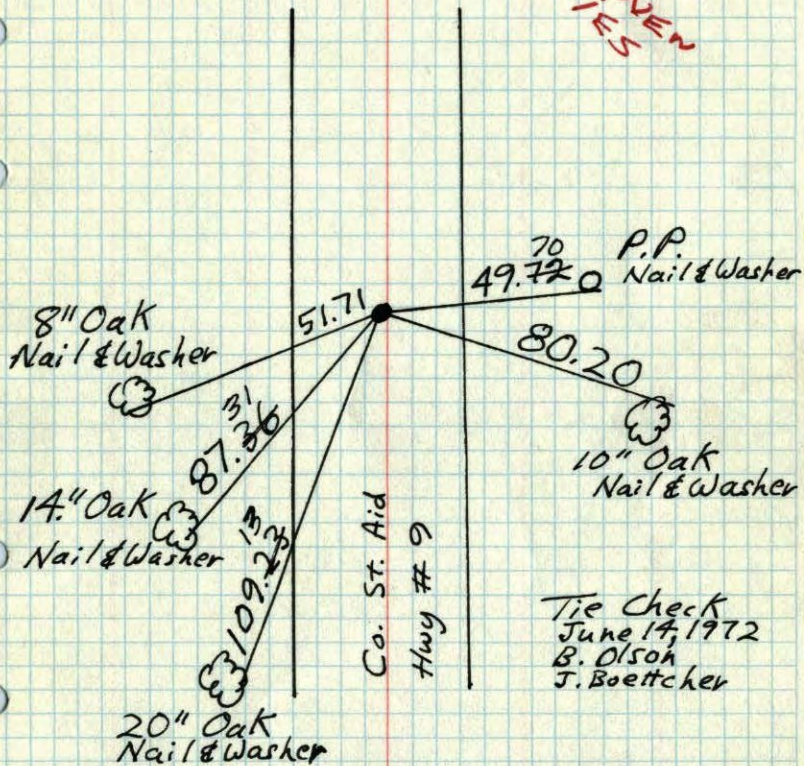
7 JUL 60
B. ROGERS
P. CARLSON

SW Cor. Sec. 4 - T32 - R24

Cast Iron Mon. down 0.4' ±.

7/7/60
B. Rogers
R. Carlson

SEE NEW TIES



TIE CHECK
5-26-76
D. DAHL
B. SANNERUD
G. ADAMS

TEMPERATURE CORRECTED
AND HORIZONTALLY
TAPED MEASUREMENTS

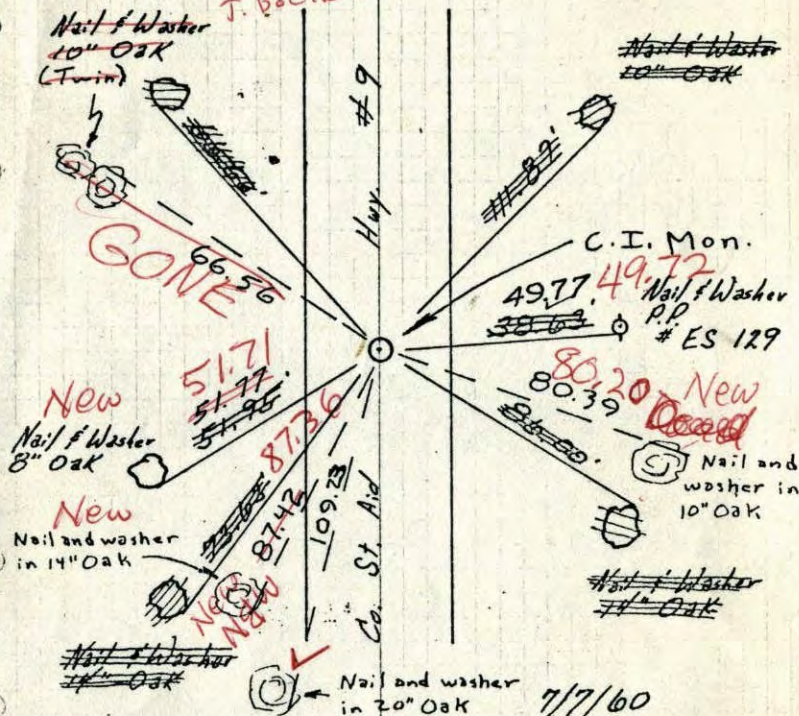
ROLAND W. ANDERSON
COUNTY SURVEYOR
ANOKA COUNTY, MINNESOTA.

SW Cor Sec 4 - T32 - R24

Replaced Iron Mon. with
Cast Iron Mon. down 4'

Ties checked
Aug. 22, 1964
M.D. Anderson
J. Dunlap
--- New ties.

Tape #11
Temp. 78
Tie check
6/14/72
B. Olson
J. Boettcher



TEMPERATURE CORRECTED
AND HORIZONTALLY
TAPED MEASUREMENTS

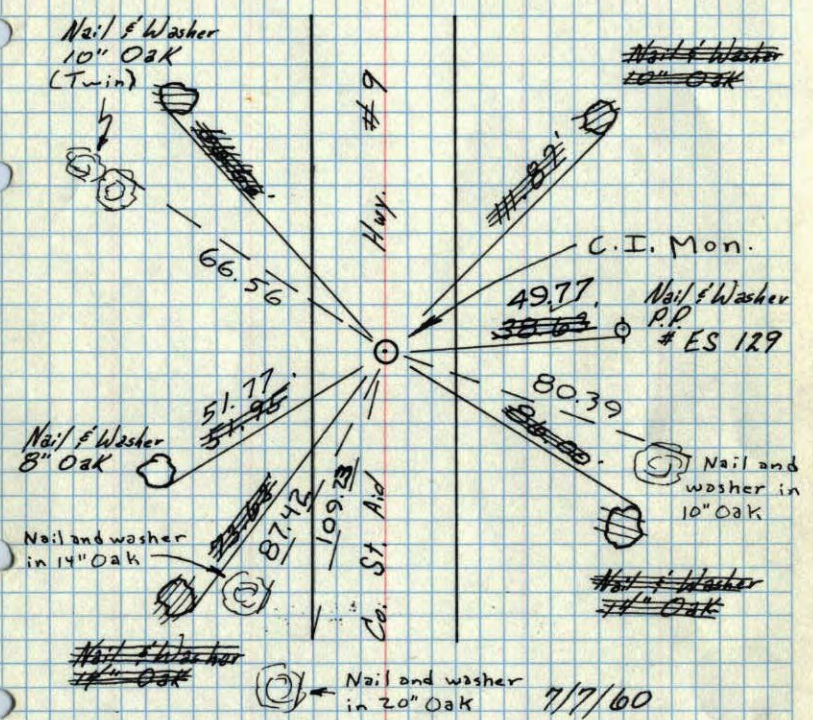
ROLAND W. ANDERSON
COUNTY SURVEYOR
ANOKA COUNTY, MINNESOTA

7/7/60
B. Rogers
Randy Carlson

Ties Checked
July 8, 1968
H. Larson, R. Olson, P. Pich

SW Cor Sec 4-T32-R24
Replaced Iron Mon. with
Cast Iron Mon. down 4'

Ties checked
Aug. 22, 1964
M.D. Anderson
J. Dunlop
--- New ties.



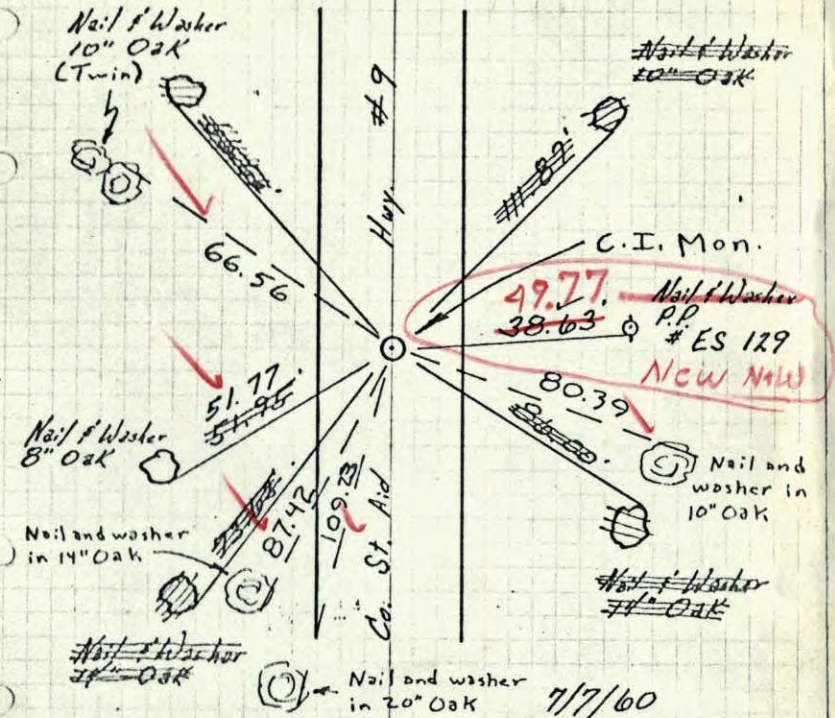
TEMPERATURE CORRECTED
AND HORIZONTALLY
TAPED MEASUREMENTS

7/7/60
Bill Rogers
Kandy Carlson
Ties Checked
July 8, 1968
H. Larson, R. Olson, P. Pich

ROLAND W. ANDERSON
COUNTY SURVEYOR
ANOKA COUNTY, MINNESOTA

SW Cor Sec 4-T32-R24
Replaced Iron Mon. with
Cast Iron Mon. down 4'

Ties checked
Aug. 22, 1964
M.D. Anderson
J. Dunlop
--- New ties.



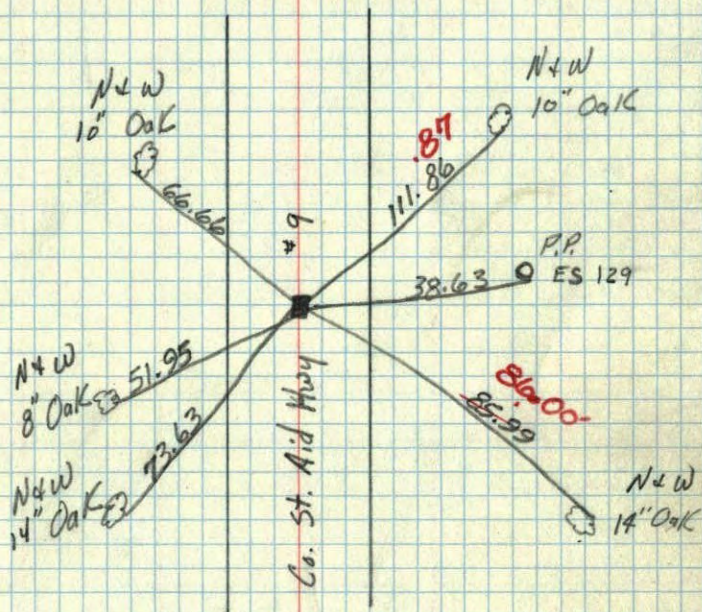
TEMPERATURE CORRECTED
AND HORIZONTALLY
TAPED MEASUREMENTS

July 8, 1968
H. Larson
R. Olson
P. Pich

ROLAND W. ANDERSON
COUNTY SURVEYOR
ANOKA COUNTY, MINNESOTA

7/7/60
Bill Rogers
Kandy Carlson

SW Cor. Sec. 4 T32 R24
 Replaced Iron pipe with
 Cast Iron Man. down 4"

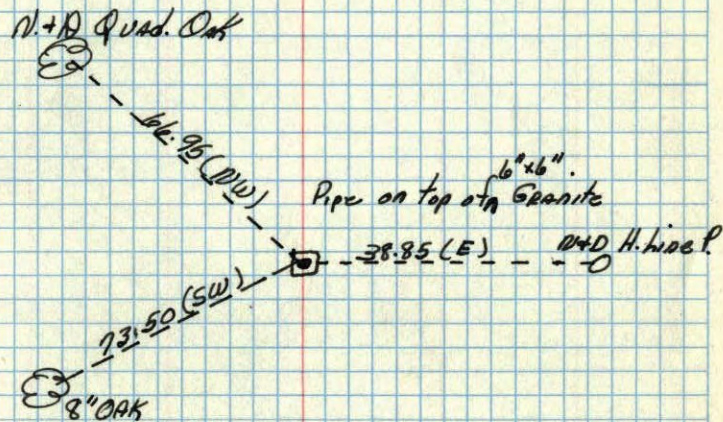


1911/160

TC
 Temp. 81°
 7/7/60
 Bill Rogers
 Randy Carlson

SW corner of Sec. 4 T32, R24 ✓

6" x 6" Granite & Round Lake Road 4 3'
 South of High line.



Anoka Co. Hy. Dept.