

CERTIFICATE OF LOCATION OF GOVERNMENT CORNER

County of Anoka

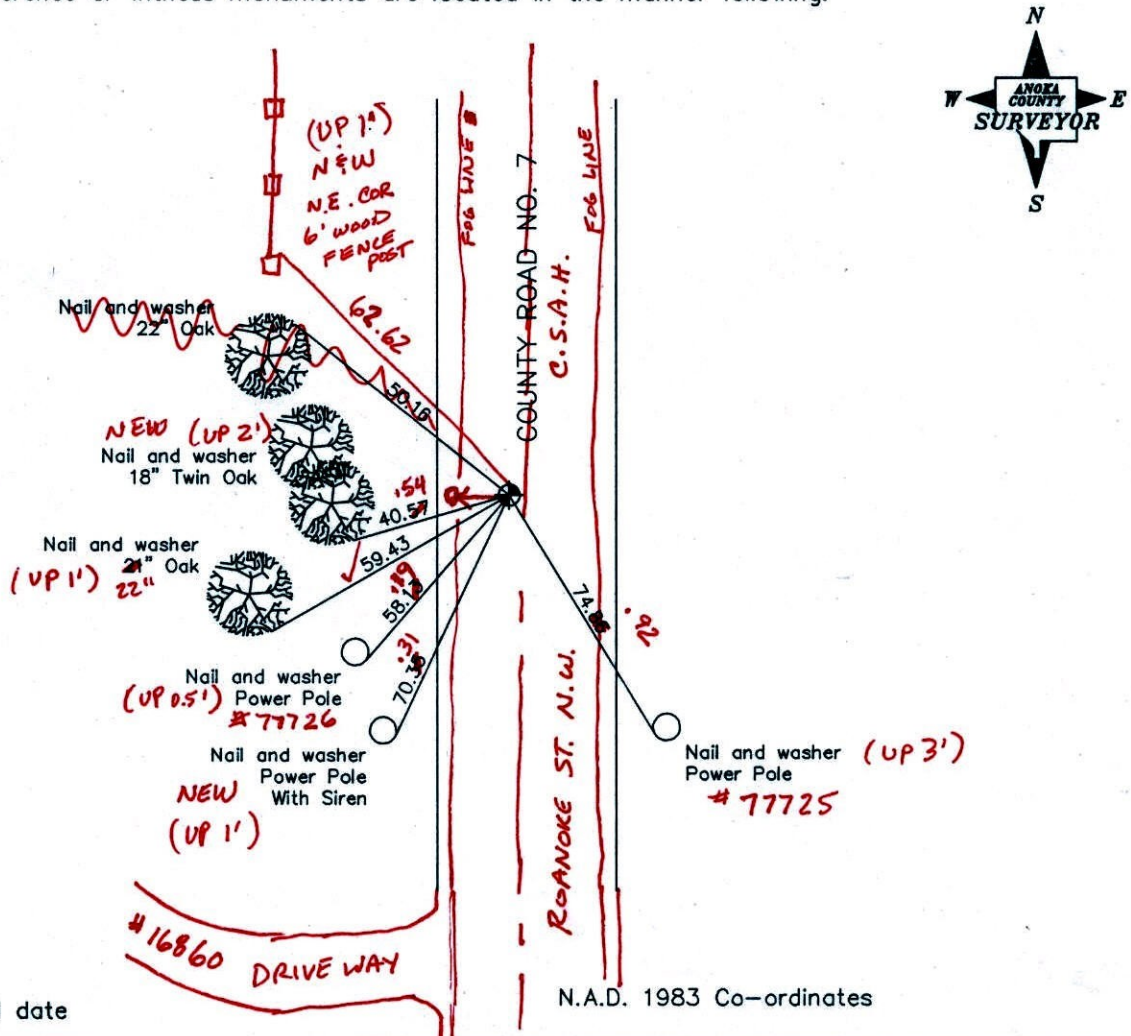
State of Minnesota

West 1/4 Corner of Sec. 7 Township 32 Range 24

I hereby certify that on the 13th day of December, 1965, I found the described corner which was evidenced by area resurvey

and I further certify that to perpetuate the location of said corner, I did, at the exact location thereof, place a permanent marker consisting of a cast iron monument - MON FALLS 1' WEST OF SOUTH LANE FOG LINE (FLUSH)

which reference or witness monuments are located in the manner following:



1-12-11
BK/SS
T/T

Revised date

| |
|---------|
| 8/30/90 |
| 7/15/93 |
| 9/7/99 |
| |
| |

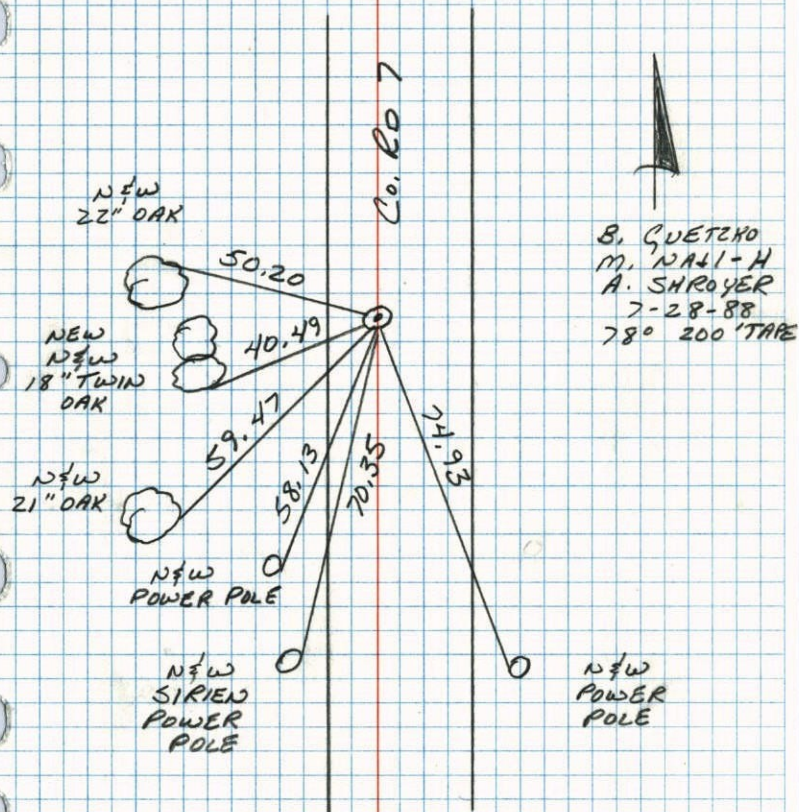
N.A.D. 1983 Co-ordinates

| | |
|--|--|
| County Project Co-ordinates Northing <u>188279.5998</u> Easting <u>468623.0944</u> | State Plane Co-ordinates Y _____ X _____ |
|--|--|

Date 9/7/99

W 1/4 COR SEC 7 T32 R24

RETIED CAST IRON MONUMENT.

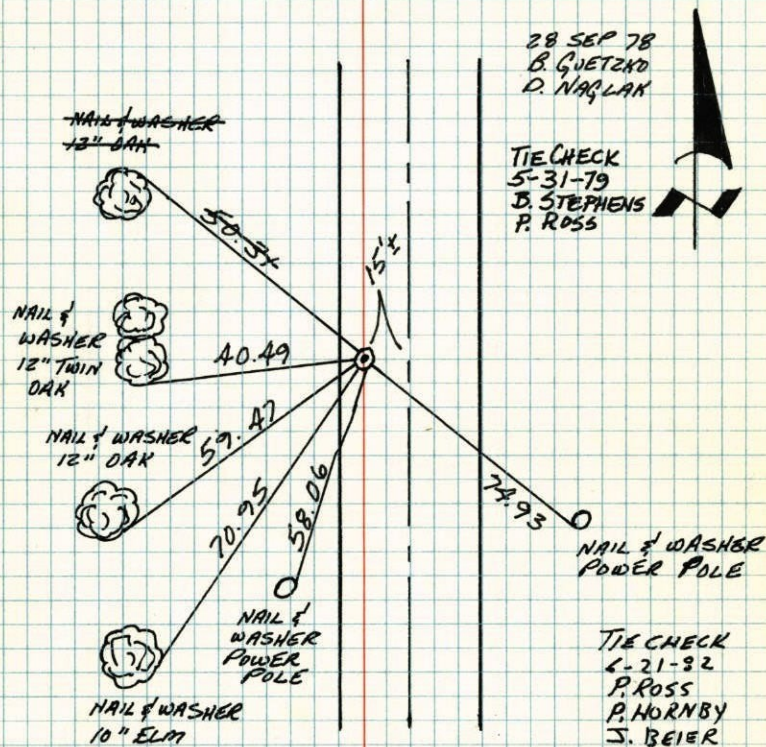


NO. 448

TELETYPE

W 1/4 CORNER SECTION 7; T32, - R24

RESET CAST IRON MONUMENT, SET 21 MAY 66
BY M.D. ANDERSON AND H.J. LARSON, AFTER ROAD
CONSTRUCTION WAS COMPLETED. CAST IRON ON
WEST SHOULDER OF ROAD. P.K.'S 200' NORTH AND
EAST.



NO. 448

TELETYPE

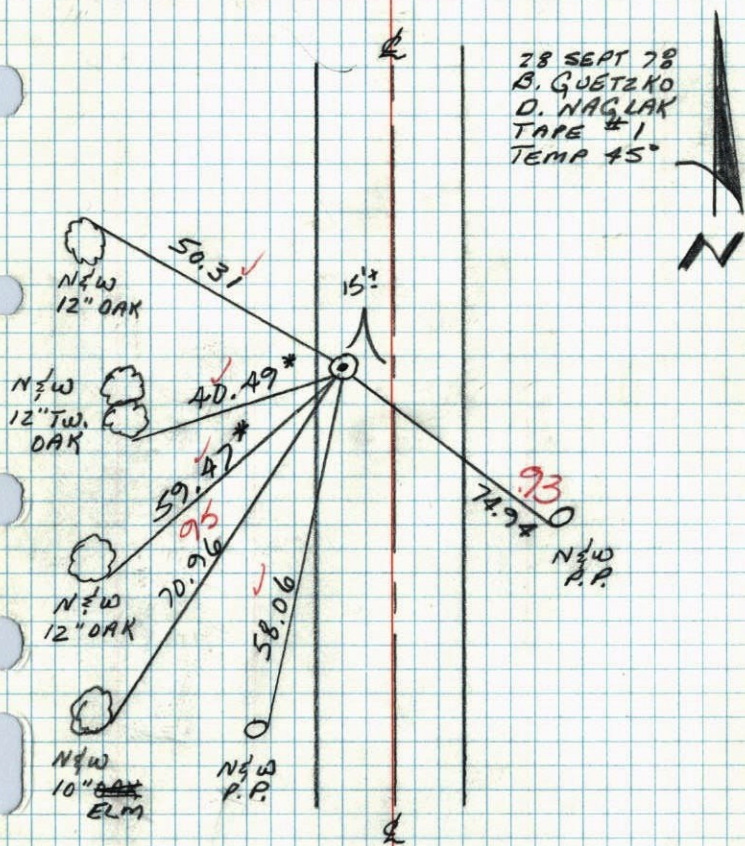
TEMPERATURE CORRECTED
AND HORIZONTALLY
TAPED MEASUREMENTS

ROLAND W. ANDERSON
COUNTY SURVEYOR
ANOKA COUNTY, MINNESOTA

W 1/4 COR SEC 7 T32 R24

RESET CAST IRON MONUMENT, SET 21 MAY 66
BY MO ANDERSON & HJ LARSON, AFTER
ROAD CONSTRUCTION WAS COMPLETED.

C.I. ON WEST SHOULDER OF ROAD. PK'S
2.00' NORTH & EAST

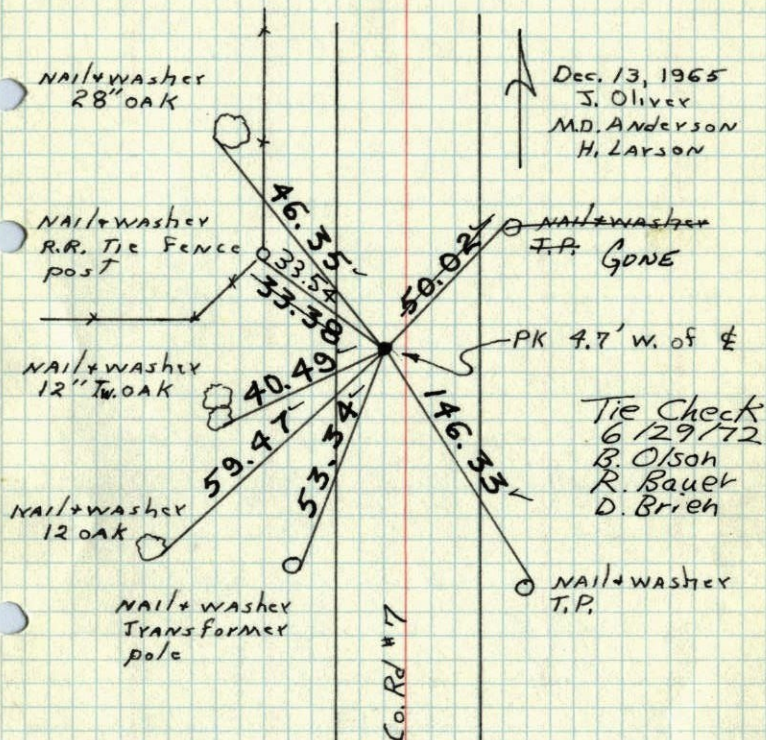


28 SEPT 78
B. GUETZKO
D. HAGLAK
TAPE #1
TEMP 45°

* DENOTES OLD TIES
DO NOT NEED TEMP.
CORRECTING.

W 1/4 Cor. Sec. 7 T32 R24

Set P.K. spk. from resurvey also set
PK spk's. 2.00' north and east.



Dec. 13, 1965
J. Oliver
M.D. Anderson
H. Larson

Tie Check
6/29/72
R. Olson
R. Bauer
D. Brieh

Set Cast Iron Monument

May 27, 1966
M. D. Anderson
H. Larson

TIE CHECK
5-26-76
D OAH
B SANNERUD
D ADAMS

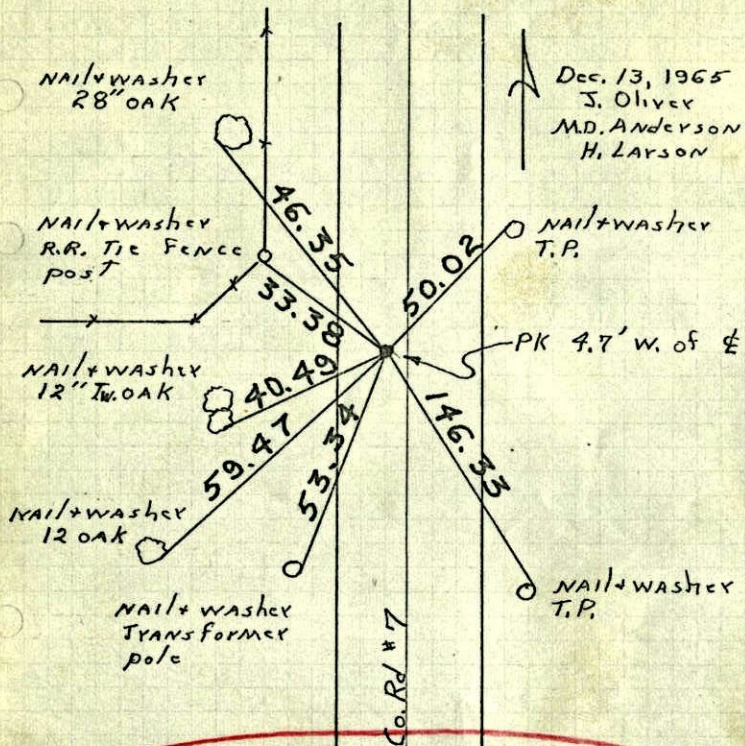
Ties Checked
July 8, 1968
H. Larson
R. Olson
P. Fich

TEMPERATURE CORRECTED
AND HORIZONTALLY
TAPED MEASUREMENTS

ROLAND W. ANDERSON
COUNTY SURVEYOR
ANOKA COUNTY, MINNESOTA

W 1/4 Cor. Sec. 7 T32 R24

Set P.K. spk. from resurvey also set PK spks. 2.00' north and east.



Dec. 13, 1965
J. OLIVER
M.D. ANDERSON
H. LARSON

Set Cast Iron Monument
May 27, 1966
MDA ~ H.L.L.

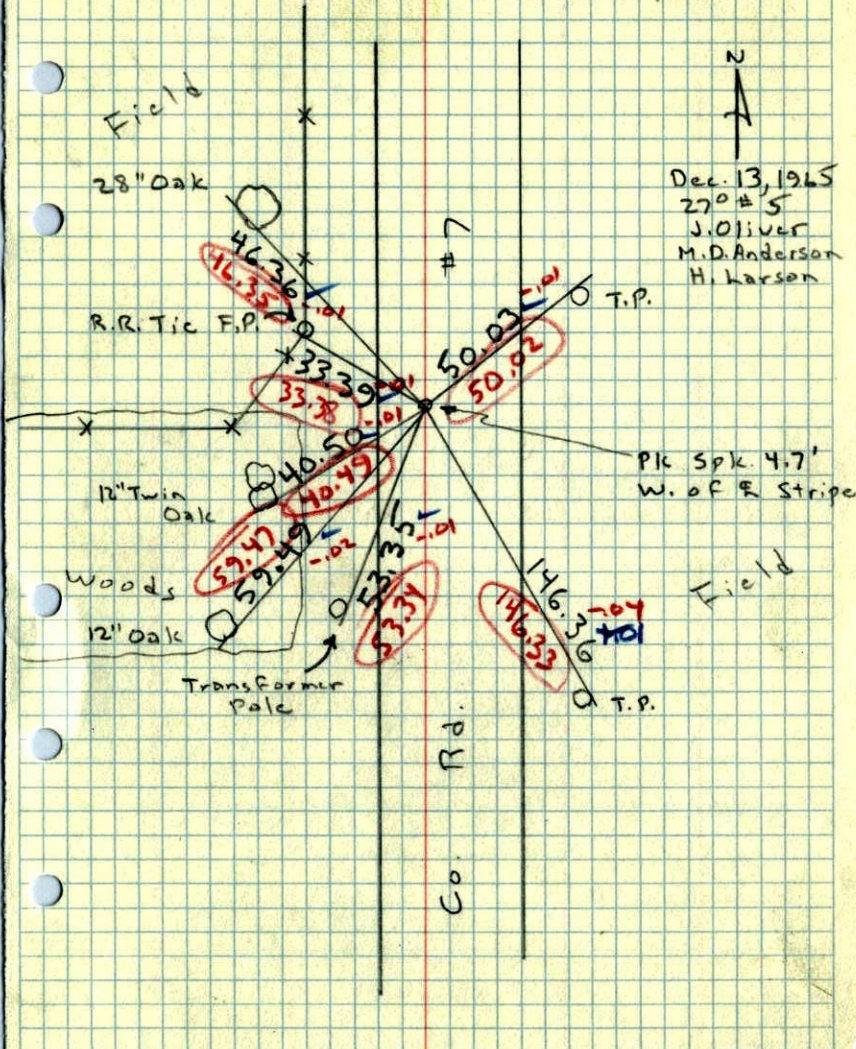
TEMPERATURE CORRECTED
AND HORIZONTALLY
TAPED MEASUREMENTS

ROLAND W. ANDERSON
COUNTY SURVEYOR
ANOKA COUNTY, MINNESOTA



W 1/4 Cor. Sec. 7, T32, R24

Set PK Spk. from Resurvey. Also set PK Spk. 2.00' North and East. Nails and Washers in all tie trees and poles.



Dec. 13, 1965
270 #5
J. OLIVER
M.D. ANDERSON
H. LARSON

