

CERTIFICATE OF LOCATION OF GOVERNMENT CORNER

County of Anoka

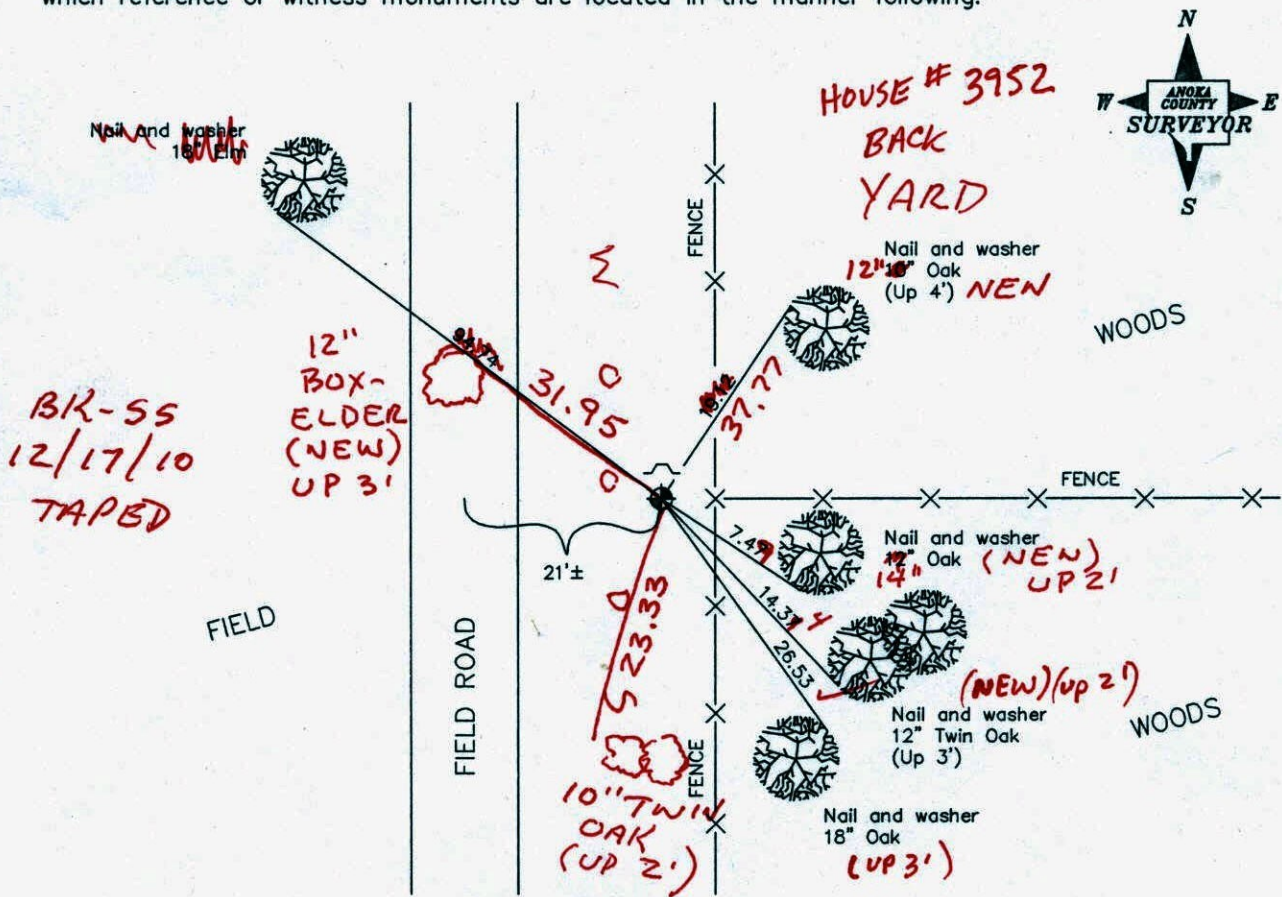
State of Minnesota

East 1/4 Corner of Sec. 7 Township 32 Range 24

I hereby certify that on the 17th day of May, 1966, I found the described corner which was evidenced by area resurvey

and I further certify that to perpetuate the location of said corner, I did, at the exact location thereof, place a permanent marker consisting of a cast iron monument with sign and post on the north side **(FLVSH)**

which reference or witness monuments are located in the manner following:



Revised date

8/16/88
7/27/93
1/24/01

N.A.D. 1983 Co-ordinates

County Project Co-ordinates	
Northing	<u>188282.4293</u>
Easting	<u>474121.5602</u>

State Plane Co-ordinates	
Y	_____
X	_____

Date 1/24/01

CERTIFICATE OF LOCATION OF GOVERNMENT CORNER

County of Anoka

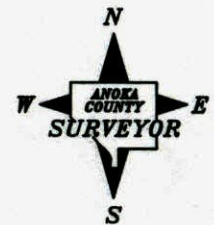
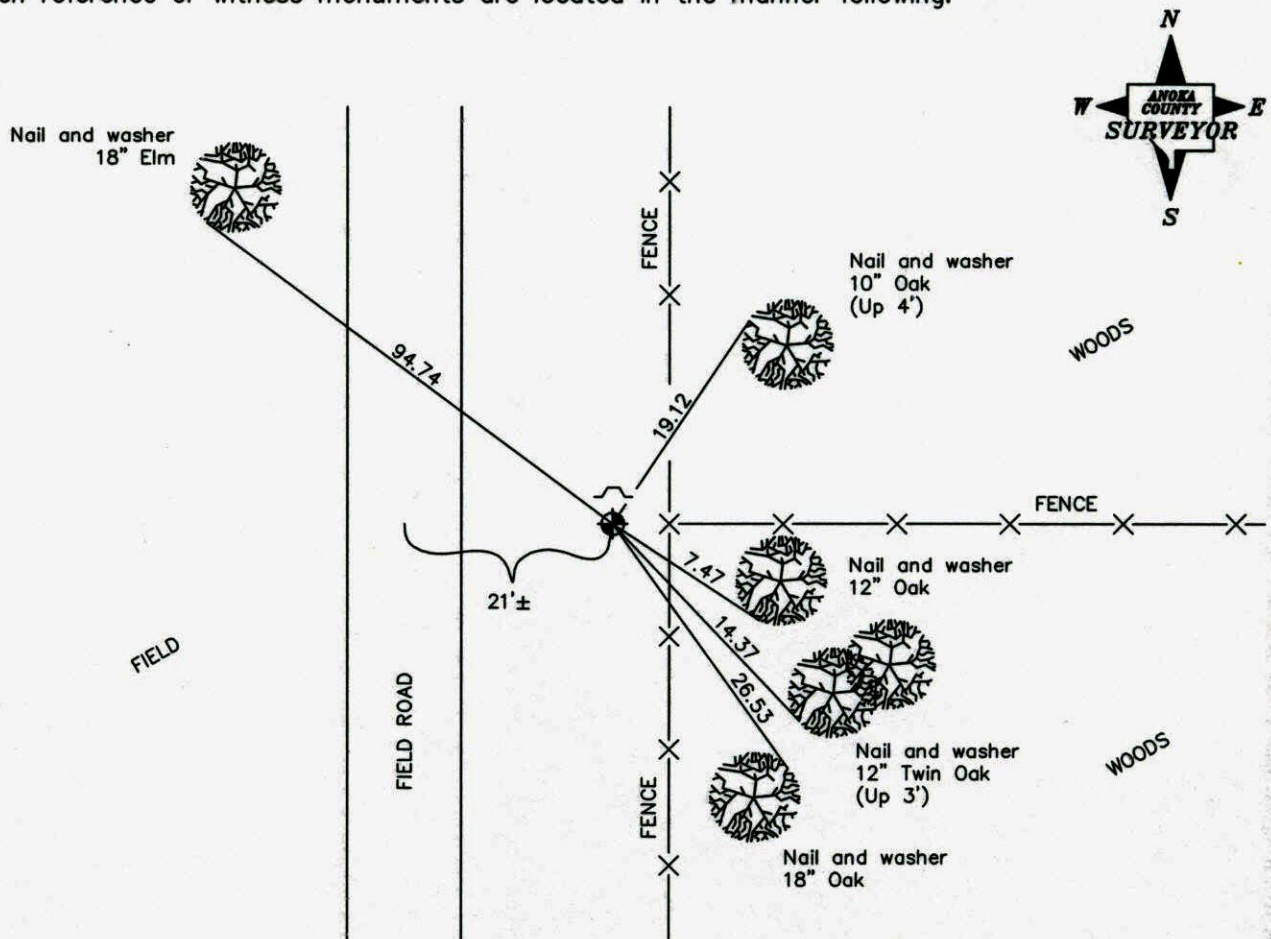
State of Minnesota

East 1/4 Corner of Sec. 7 Township 32 Range 24

I hereby certify that on the 17th day of May, 1966, I found the described corner which was evidenced by area resurvey

and I further certify that to perpetuate the location of said corner, I did, at the exact location thereof, place a permanent marker consisting of a cast iron monument with sign and post on the north side

which reference or witness monuments are located in the manner following:



Revised date

6/7/85
8/16/88
7/27/93
1/24/01

N.A.D. 1983 Co-ordinates

County Project Co-ordinates	State Plane Co-ordinates
Northing _____	Y _____
Easting _____	X _____

Date _____

CERTIFICATE OF LOCATION OF GOVERNMENT CORNER

County of Anoka

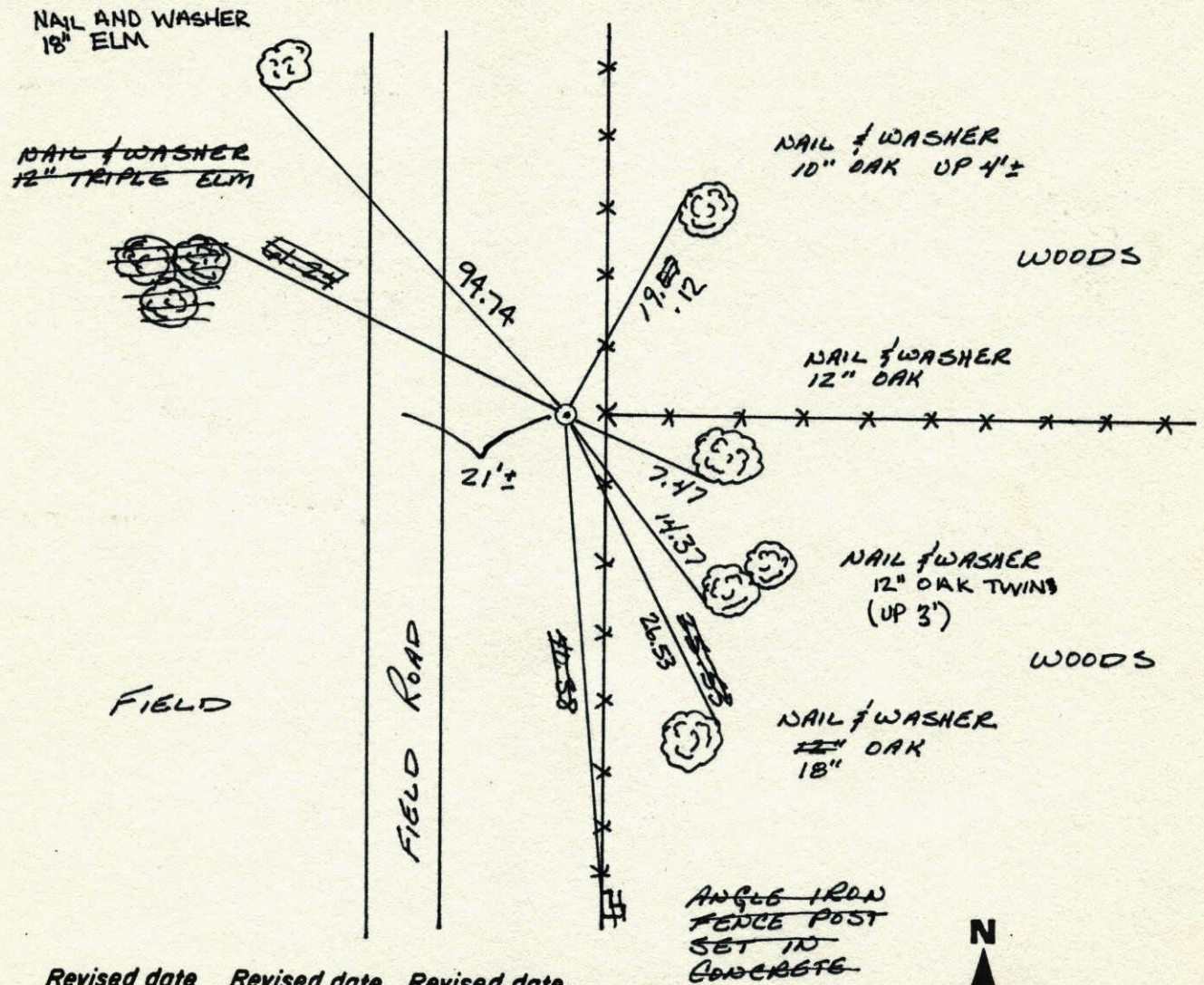
State of Minnesota

EAST 1/4 Corner of Sec. 7 Township 32 Range 24

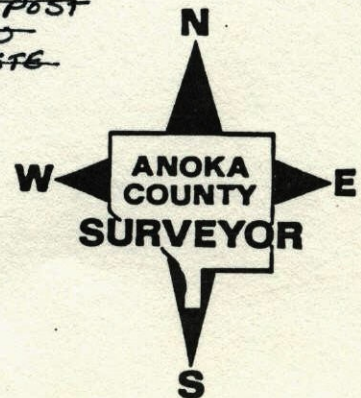
I hereby certify that on the 17 day of MAY, 1966, I found the described corner which was evidenced by AREA RESURVEY

and I further certify that to perpetuate the location of said corner, I did, at the exact location thereof, place a permanent marker consisting of CAST IRON MONUMENT WITH SIGN AND POST ON THE NORTH SIDE

which reference or witness monuments are located in the manner following:

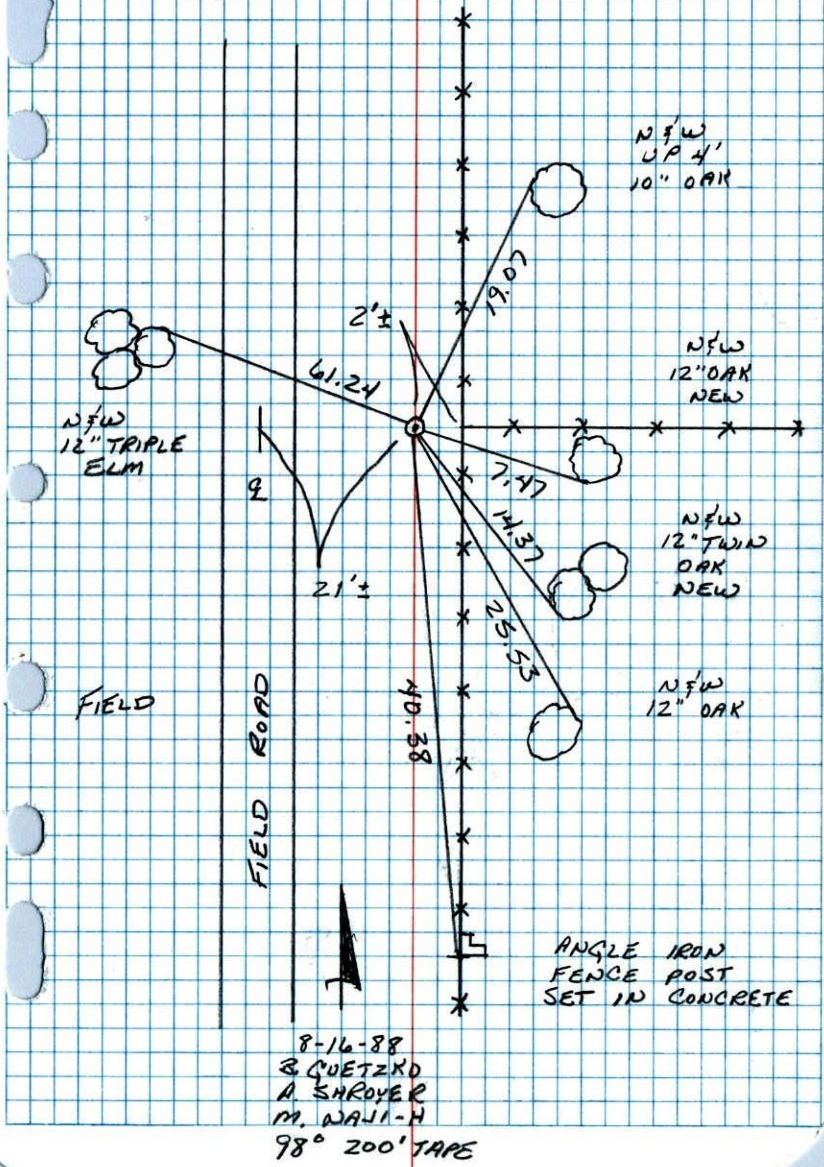


Revised date	Revised date	Revised date
6-28-82		
6-7-85		
8-16-88		
7-27-93		
1-24-01		



E 1/4 CORNER SEC 7 T32 R24

RETIED CAST IRON MONUMENT.

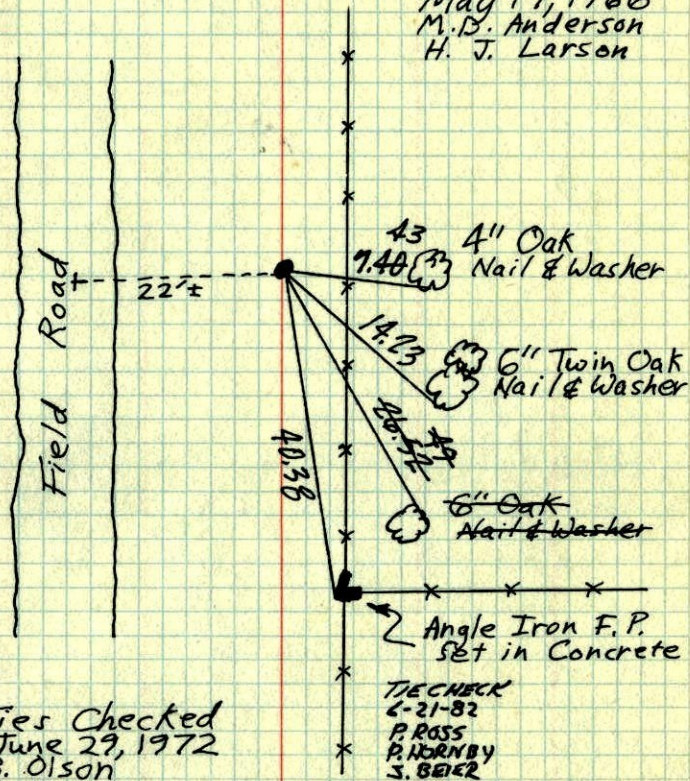


E 1/4 Cor. Sec. 7-T32-R24

Set Cast Iron Monument flush.

Set from Area Resurvey.

May 17, 1966
M.D. Anderson
H. J. Larson



Ties Checked
June 29, 1972
B. Olson
R. Bauer
D. Brien

TIE CHECK
5-26-76
D. DAHL
B. SANNERUD
G. ADAMS

TIE CHECK
5-31-79
B. STEPHENS
P. ROSS

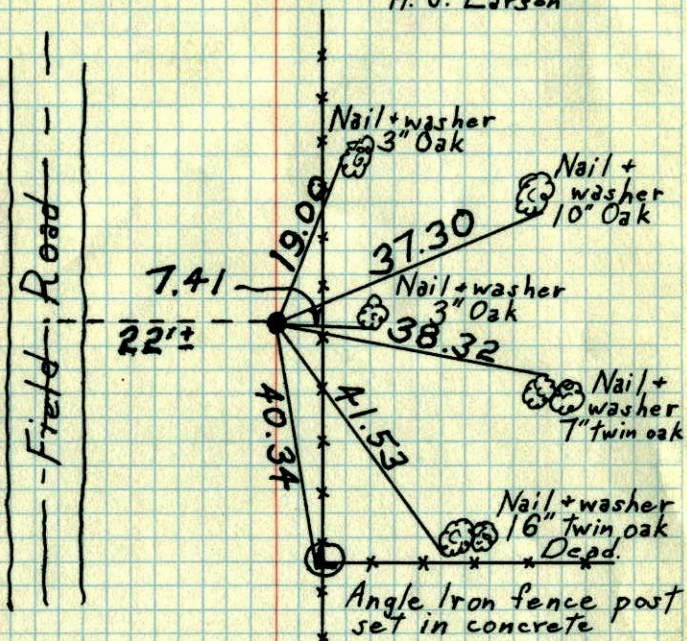
ROLAND W. ANDERSON
COUNTY SURVEYOR
ANOKA COUNTY, MINNESOTA

TEMPERATURE CORRECTED
AND HORizontally
TAPED MEASUREMENTS

E¹/₄ Cor. Sec. 7-T32-R24

Set Cast Iron Monument from Area Resurvey
Set flush

May 17, 1966
M. D. Anderson
H. J. Larson



Ties Checked
July 8, 1968
H. Larson
R. Olson
P. Pich

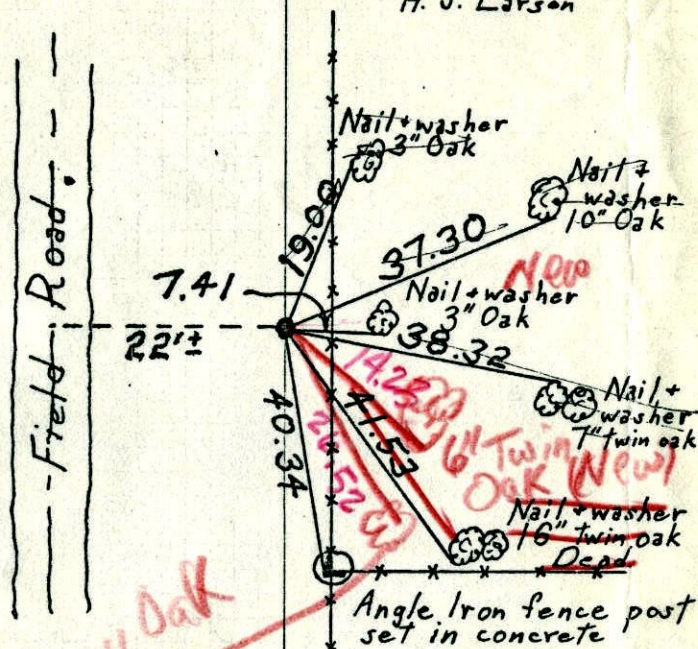
TEMPERATURE CORRECTED
AND HORIZONTALLY
TAPED MEASUREMENTS

ROLAND W. ANDERSON
COUNTY SURVEYOR
ANOKA COUNTY, MINNESOTA

E¹/₄ Cor. Sec. 7-T32-R24

Set Cast Iron Monument from Area Resurvey
Set flush

May 17, 1966
M. D. Anderson
H. J. Larson



Ties Checked
July 8, 1968
H. Larson
R. Olson
P. Pich

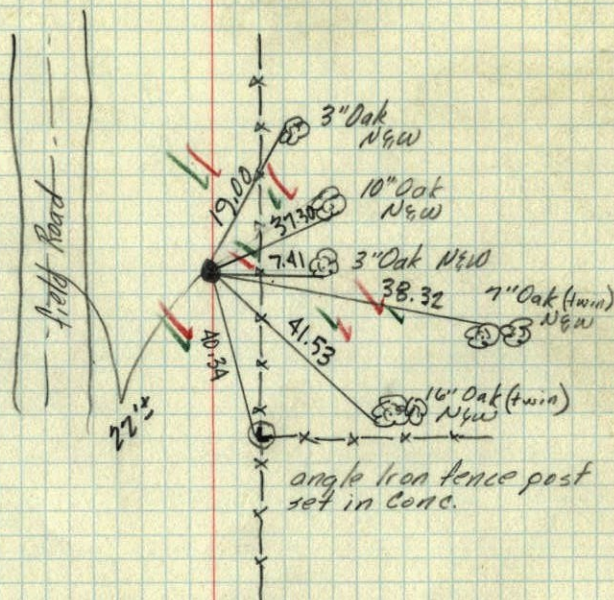
TEMPERATURE CORRECTED
AND HORIZONTALLY
TAPED MEASUREMENTS

ROLAND W. ANDERSON
COUNTY SURVEYOR
ANOKA COUNTY, MINNESOTA

E 1/4 Cor. Sec. 7, T32, R 24

Set C. Iron Mon from Area Resurvey
Set flush

May 17, 1966
M. D. Anderson
+ J. Layson
temp. 70°
tape 5



TEMPERATURE CORRECTED
AND HORIZONTALLY
TAPED MEASUREMENTS

ROLAND W. ANDERSON
COUNTY SURVEYOR
ANOKA COUNTY, MINNESOTA