

CERTIFICATE OF LOCATION OF GOVERNMENT CORNER

County of Anoka

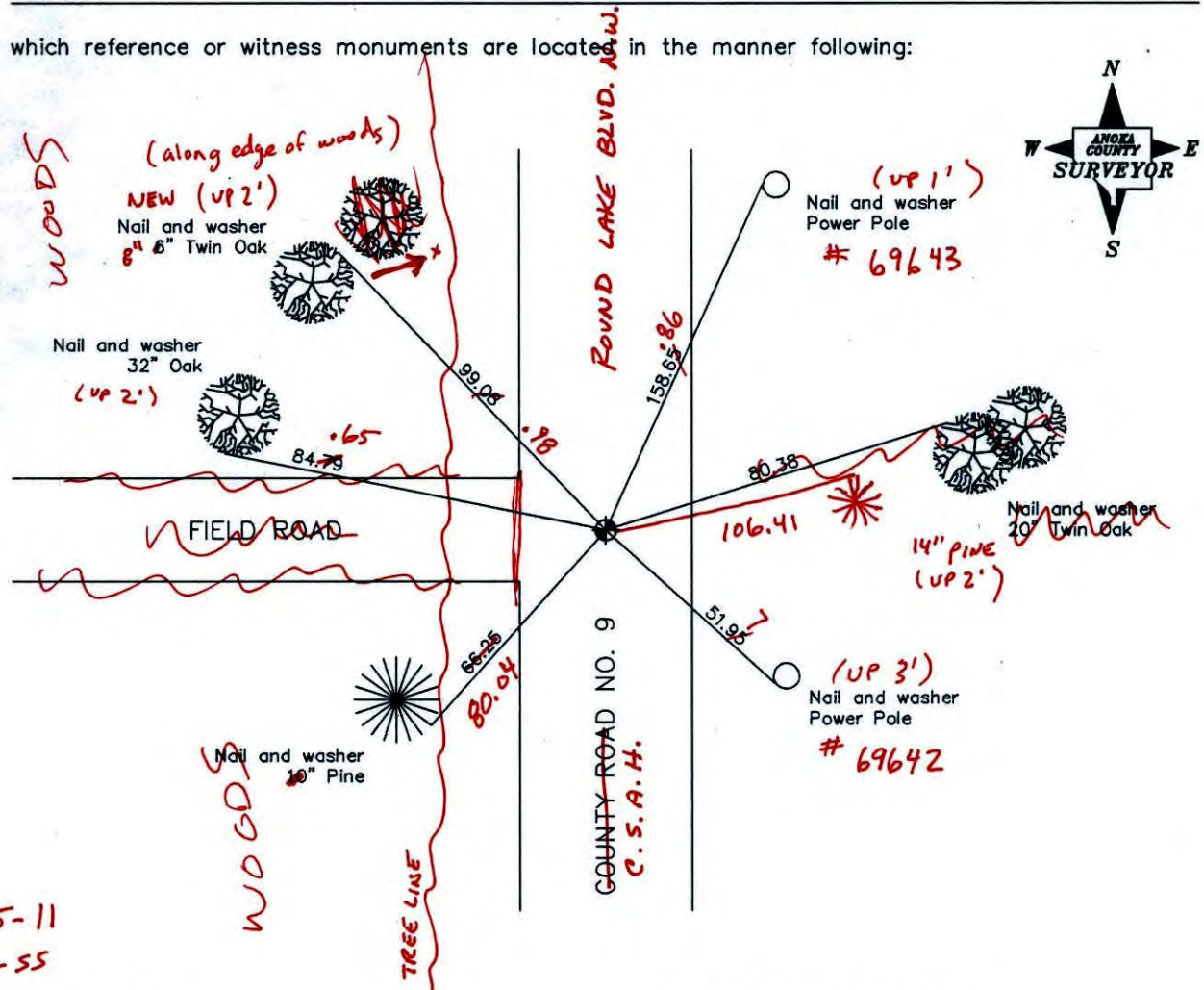
State of Minnesota

West 1/4 Corner of Sec. 9 Township 32 Range 24

I hereby certify that on the 29th day of July, 1964, I found the described corner which was evidenced by a 1/2" iron pipe set by N. C. Hoiwm

and I further certify that to perpetuate the location of said corner, I did, at the exact location thereof, place a permanent marker consisting of a cast iron monument ✓

which reference or witness monuments are located in the manner following:



2-15-11
BK-55
T/T Revised date

N.A.D. 1983 Co-ordinates

8/9/88
7/15/93
10/3/00

County Project Co-ordinates	
Northing	<u>188218.5120</u>
Easting	<u>479351.0887</u>

State Plane Co-ordinates	
Y	_____
X	_____

Date 10/3/00

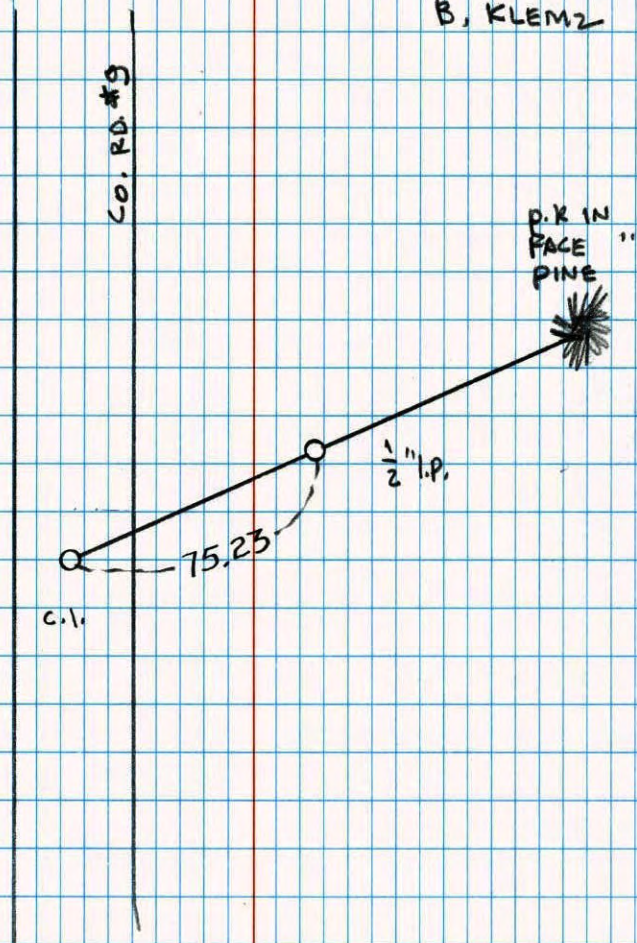
WEST 1/4 COR. SEC. 9 T 32 R 24

RETIED & PULLED CAST IRON
FOR CONST.

7-18-01

J. SIMMER

B. KLEMZ



CERTIFICATE OF LOCATION OF GOVERNMENT CORNER

County of Anoka

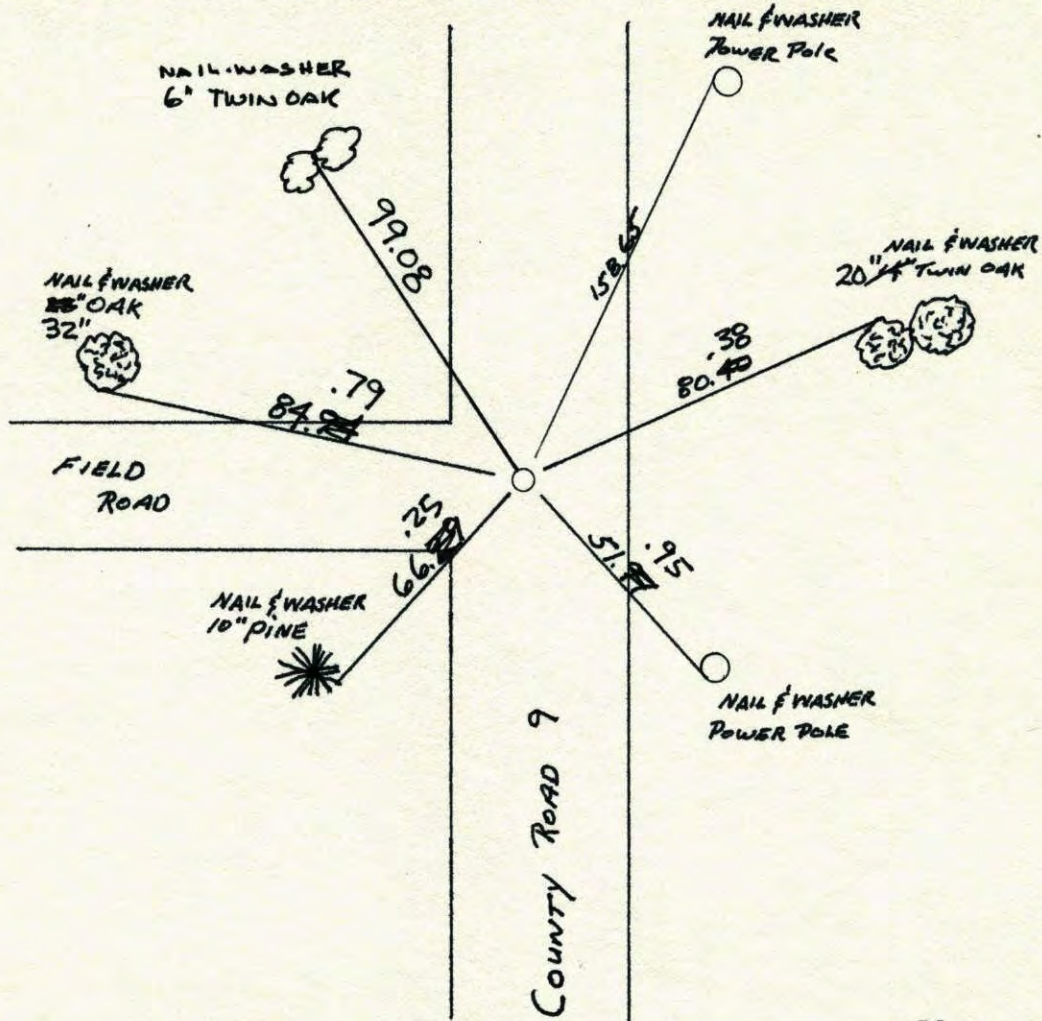
State of Minnesota

WEST 1/4 Corner of Sec. 9 Township 32 Range 24

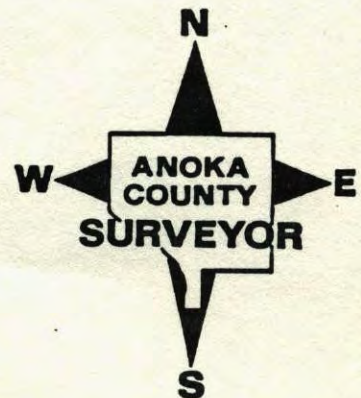
I hereby certify that on the 29TH day of July, 1964, I found the described corner which was evidenced by 1/2" IRON PIPE SET BY N.C. HOIUM

and I further certify that to perpetuate the location of said corner, I did, at the exact location thereof, place a permanent marker consisting of CAST IRON MONUMENT

which reference or witness monuments are located in the manner following:

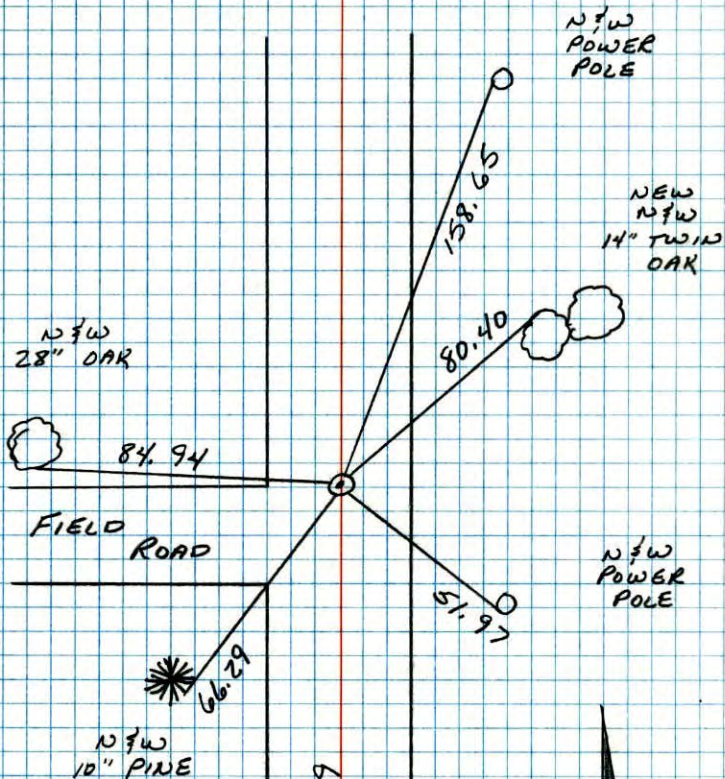


Revised date	Revised date	Revised date
9-3-82		
5-29-85		
8-9-88		
7-15-93		
10-3-00		



REDRAWN
8-9-88
W 1/4 CORNER SEC 9 T32 R24

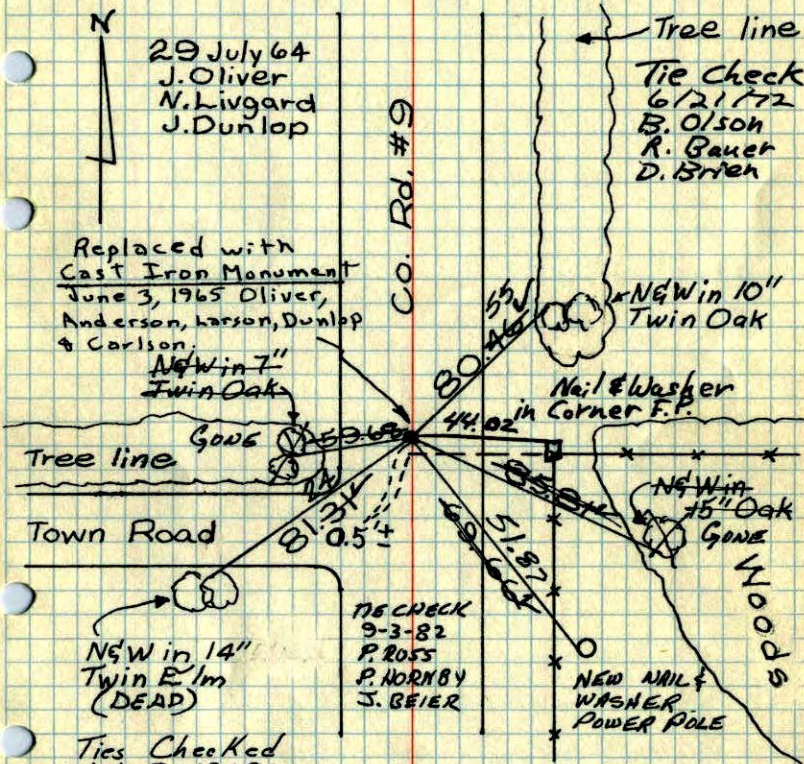
RETIED CAST IRON MONUMENT



Co Rd 9

8-9-88
B. GUETZKO
J. STEVENSON
A. SHROYER
M. WALI-H
90° 200' TAPE

W 1/4 Cor. Sec. 9, T32, R24
1/2" I.P. 0.5'± West of Φ Stripe set flush by
N.C. Moium on line and 1/2 way between
Section Corners. Set P.K.'s North & East.



29 July 64
J. Oliver
N. Livgard
J. Dunlop

Replaced with
Cast Iron Monument
June 3, 1965 Oliver,
Anderson, Larson, Dunlop
& Carlson.

NGW in 14"
Twin Elm
(DEAD)

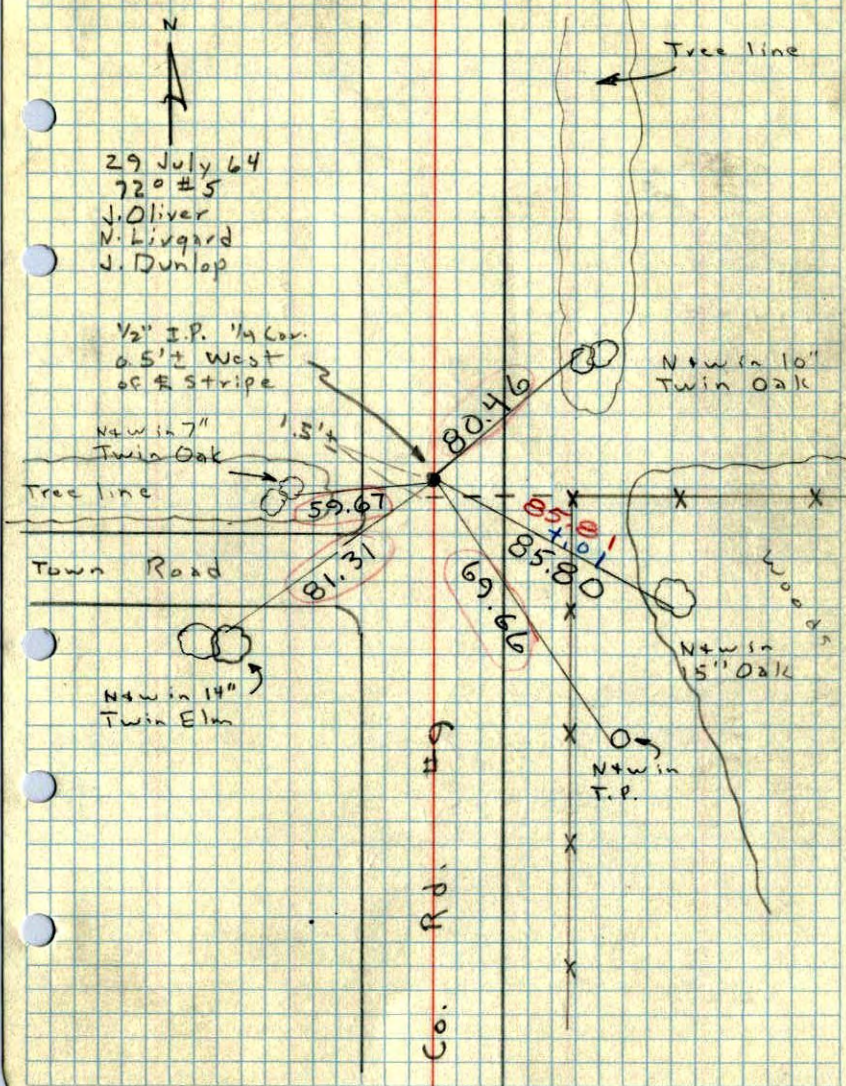
Ties Checked
July 8, 1968
H. Larson
R. Olson
P. Pich

TIE CHECK	TIE CHECK
5-27-76	5-31-79
D. DANL	B. STEPHENS
B. SANNEBUD	P. ROSS
G. ADAMS	

TEMPERATURE CORRECTED
AND HORIZONTALLY
TAPED MEASUREMENTS
ROLAND W. ANDERSON
COUNTY SURVEYOR
ANOKA COUNTY, MINNESOTA

W 1/4 Cor. Sec. 9, T32, R24

1/2" I.P. Flush Set by N.C. Hoium on line
and 1/2 way between Section Corners



29 July 64
720 #5
J. Oliver
N. Livgard
J. Dunlop

1/2" I.P. 1/4 Cor.
0.5'± West
of E stripe

N+win 7"
Twin Oak

Tree line

Town Road

N+win 14"
Twin Elm

Co. Rd. #9

Tree line

N+win 10"
Twin Oak

N+win
5" Oak

N+win
T.P.

Hoium Tied 29 July 64
J.O.

Set W 1/4 Sec. 9,
32-24

5/19/64

1/2 way - on line