

CERTIFICATE OF LOCATION OF GOVERNMENT CORNER

County of Anoka

State of Minnesota

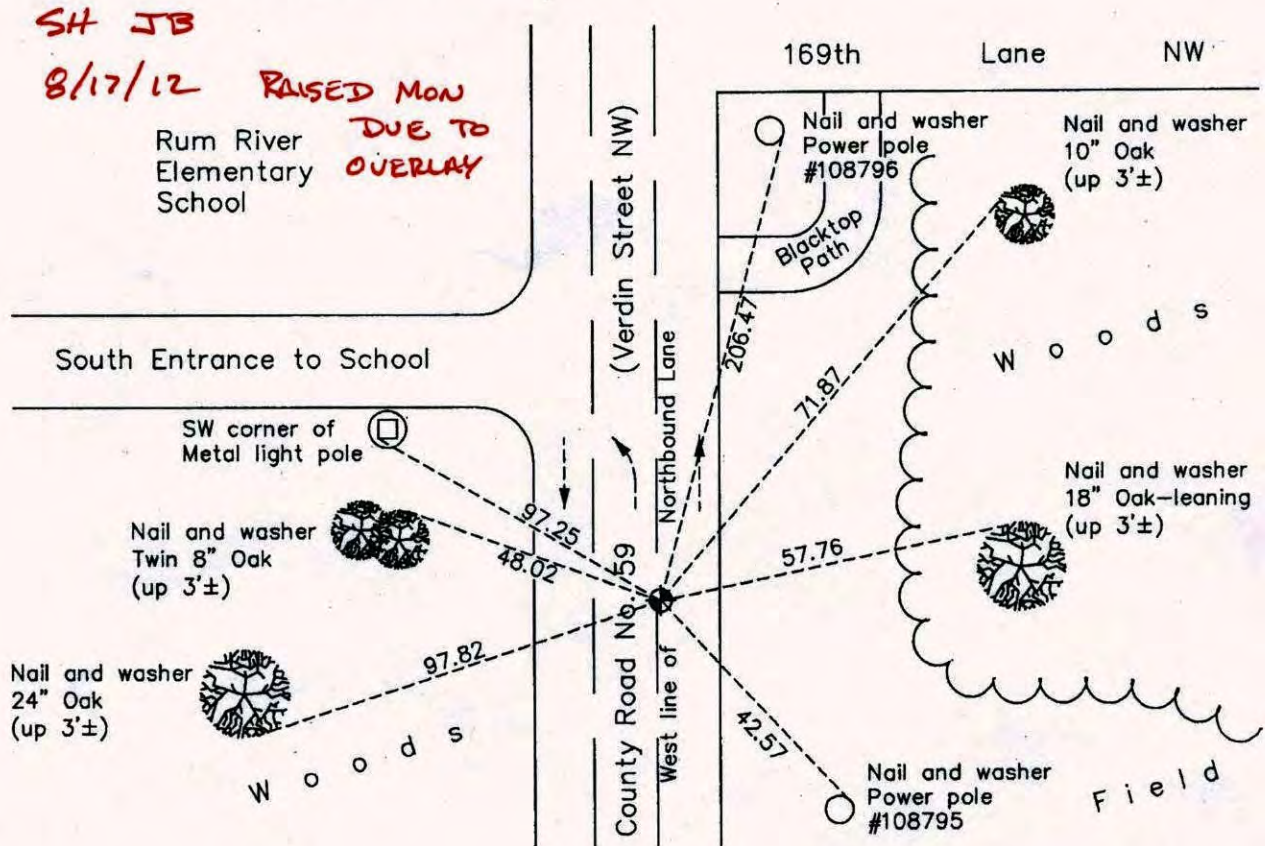
East 1/4 Corner of Sec. 9 Township 32 Range 24

On the 28th day of January, 1964, the described corner was evidenced by area resurvey

and to perpetuate the location of said corner, at the exact location thereof, a permanent marker was placed consisting of a cast iron monument

AND on the 18th day of October, 2010, said permanent marker was found down 0.2'± and the ties were updated.

Updated reference ties are as shown below.



Revision Date

4/19/11

N.A.D. 1983 Coordinates
(1996 Adjustment)

County Project Coordinates	
Northing	188239.1804
Easting	484650.2698
Date	7/13/00

I hereby certify that this United States public land survey monument record is correct and complete to the best of my knowledge and belief.

Larry D. Hoium Date 4/19/11

Larry D. Hoium, Anoka County Surveyor
Minnesota License Number 18165

CERTIFICATE OF LOCATION OF GOVERNMENT CORNER

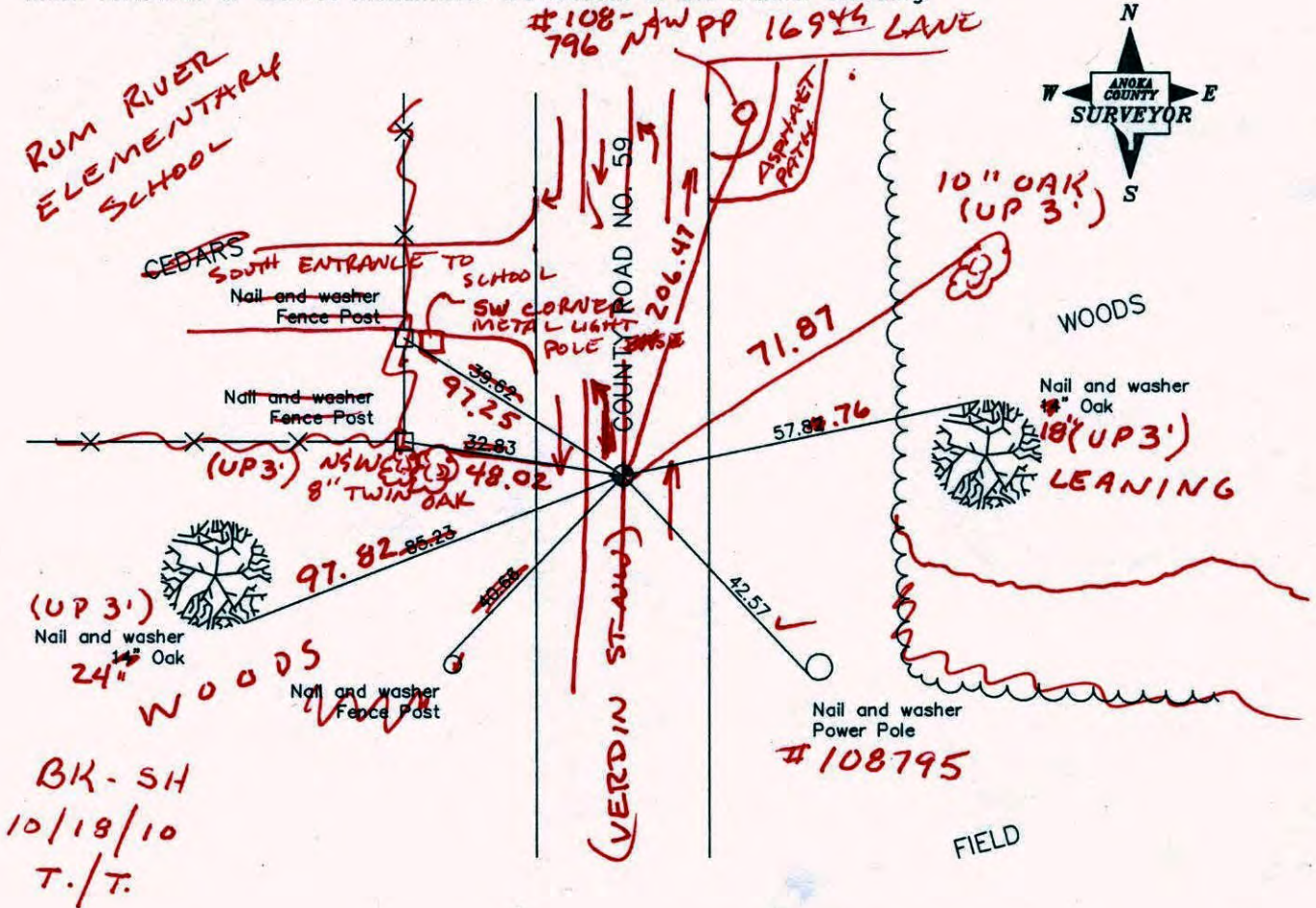
County of Anoka State of Minnesota

East 1/4 Corner of Sec. 9 Township 32 Range 24

I hereby certify that on the 28th day of January, 1964, I found the described corner which was evidenced by area resurvey

and I further certify that to perpetuate the location of said corner, I did, at the exact location thereof, place a permanent marker consisting of a cast iron monument **(DOWN 0.2)**
MON FALLS ON W. LINE OF N.B. LANE

which reference or witness monuments are located in the manner following:



BK-54
10/18/10
T./T.

Revised date

9/10/96
5/12/97
7/13/00

N.A.D. 1983 Co-ordinates

County Project Co-ordinates	State Plane Co-ordinates
Northing <u>188239.1804</u>	Y _____
Easting <u>484650.2698</u>	X _____

Date 7/13/00

CERTIFICATE OF LOCATION OF GOVERNMENT CORNER

County of Anoka

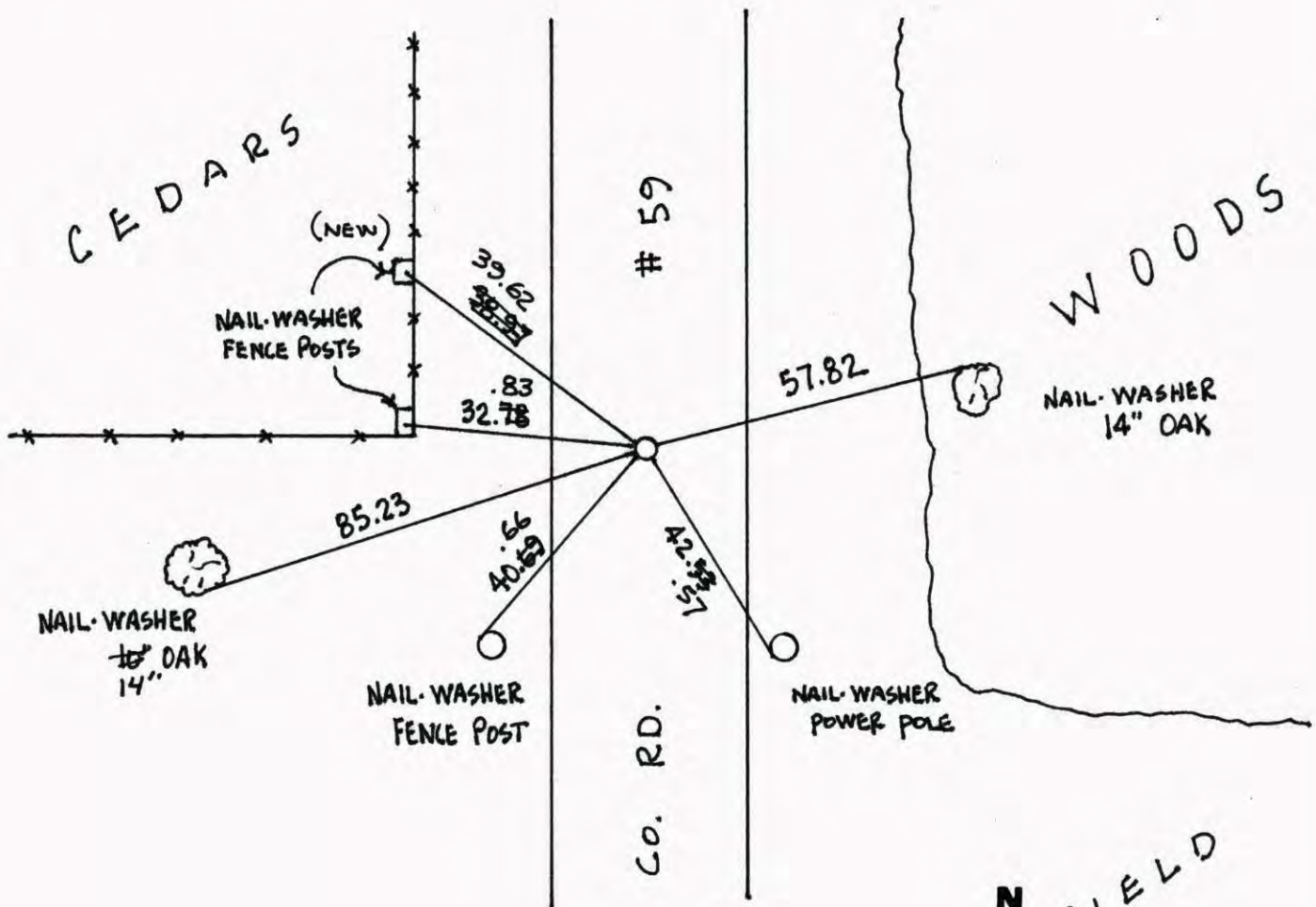
State of Minnesota

EAST 1/4 Corner of Sec. 9 Township 32 Range 24

I hereby certify that on the 28TH day of JANUARY, 19 64, I found the described corner which was evidenced by AREA RESURVEY

and I further certify that to perpetuate the location of said corner, I did, at the exact location thereof, place a permanent marker consisting of CAST IRON MONUMENT

which reference or witness monuments are located in the manner following:



Revised date	Revised date	Revised date
6-23-82		
5-30-85		
7-27-88		
7-21-93		
9-10-96		
5-12-97		
7-13-00		

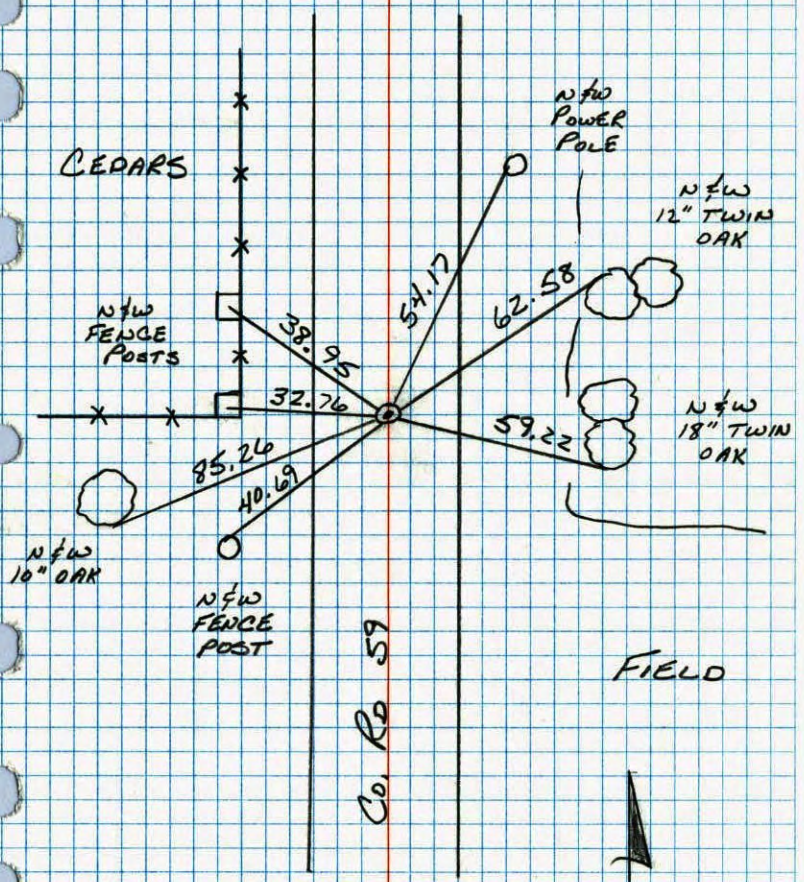


DRAWN 10-20-88 32

E 1/4 COR. SEC 9 T32 R24.

RETIRED CAST IRON MONUMENT.

NO. 448 TELEPHONE

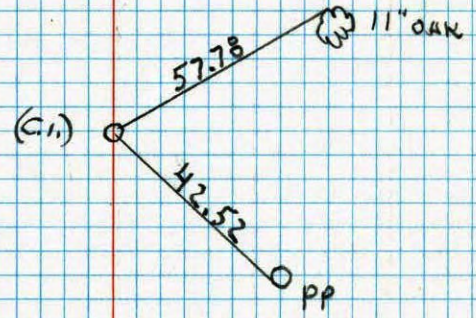


7-27-88
B. GUETZKO
M. NAJI-H
97° 200 TAPE

CONST. TIES

E 1/4 COR SEC. 9 T32 R24

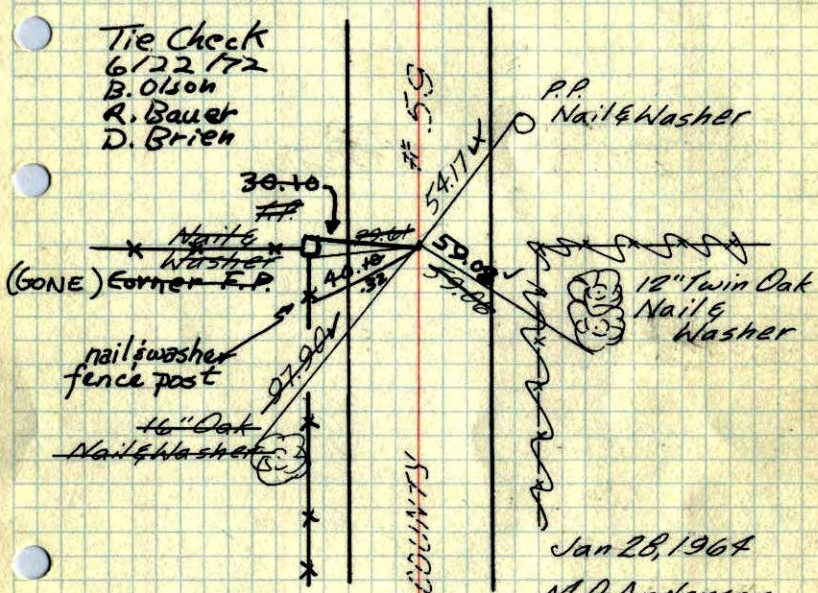
NO. 448 TELEPHONE



E 1/4 Cor. Sec. 9-32-24

Set P.K. Spike from Re-survey
Cor. is 2' E. of E traveled road

Set Cast Iron Monument 7/10/64 - M.D.A.
SEG P.K.'s N&E.



Tie Check
6/22/72
B. Olson
R. Bauer
D. Brien

Jan 28, 1964

M.D. Anderson
M. Nardin

Tie Check
July 10, 1968
H. Larson
R. Olson
P. Pieh

ROLAND W. ANDERSON
COUNTY SURVEYOR
ANOKA COUNTY, MINNESOTA

**TEMPERATURE CORRECTED
AND HORIZONTALLY
TAPED MEASUREMENTS**

TIE CHECK
MAY 27, 1976
D. DANL.
P. SANNEBUD
G. ADAMS

TIE CHECK
5-31-79
B. STEPHENS
P. ROSS

TIE CHECK
6-23-82
P. ROSS
P. HORNBY
J. BEIER

E. 1/4 Cor. Sec. 9-32-24

Set. P.K. Spike

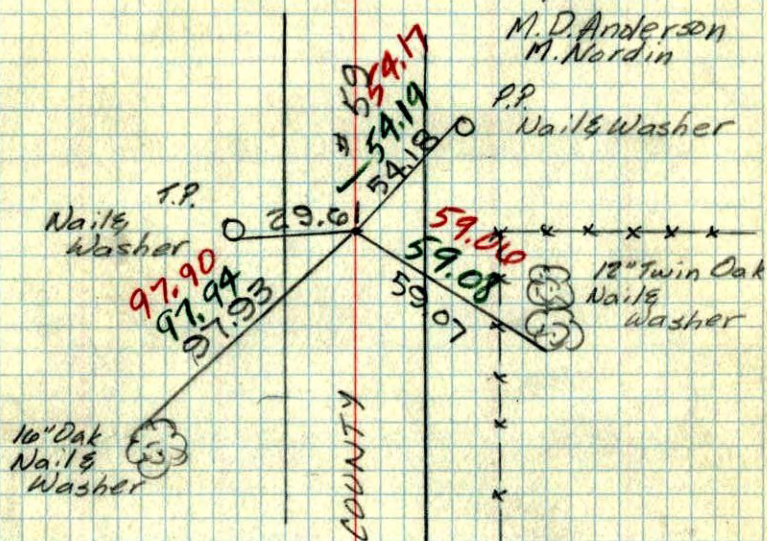
Spike 2' E of E
Traveled Blacktop

Jan. 28, 1964

Temp. 9°
Tape #2

M.D. Anderson
M. Nardin

P.P.
Nail & Washer



**TEMP. & TAPE
CORR. IN RED**