

# CERTIFICATE OF LOCATION OF GOVERNMENT CORNER

County of Anoka                      State of Minnesota

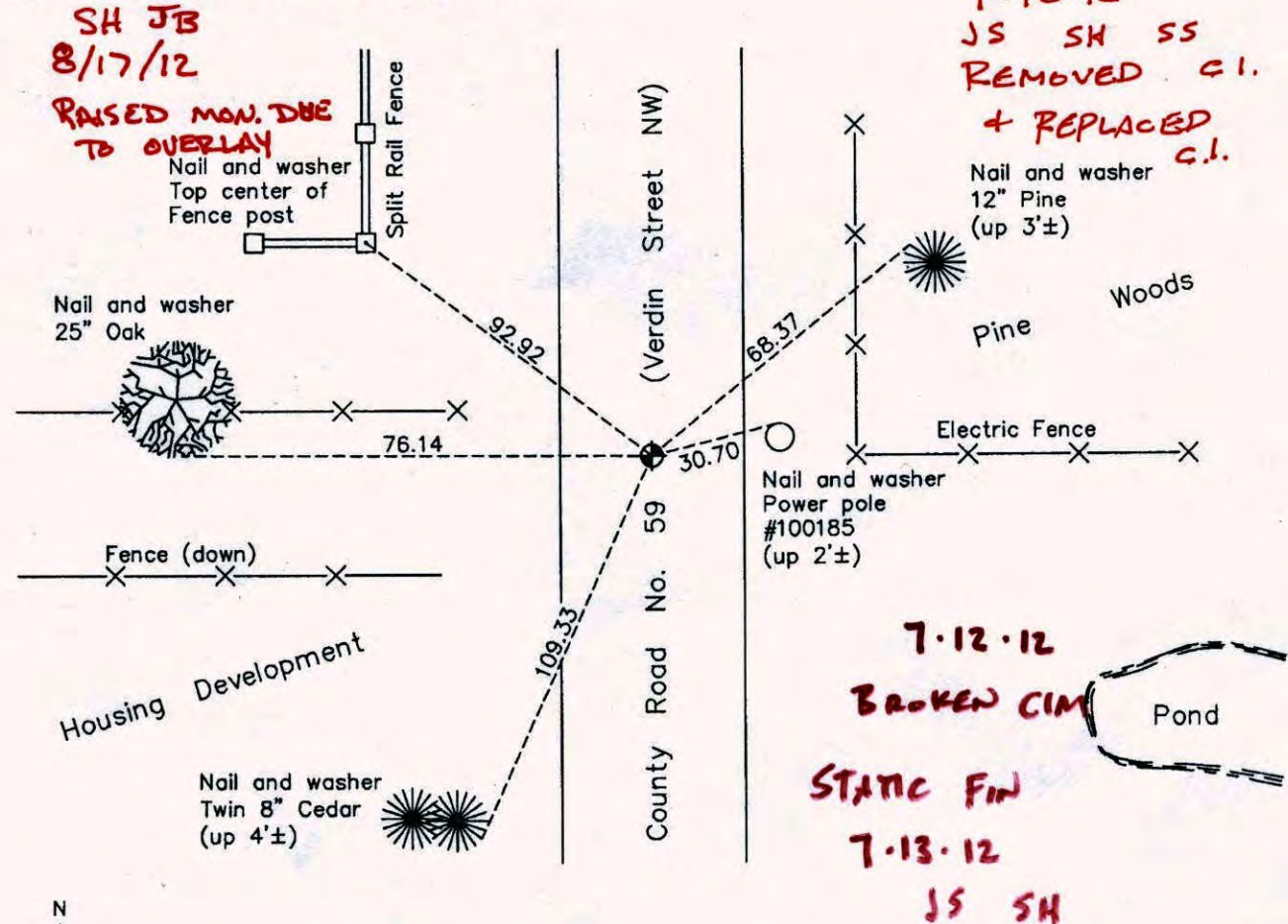
## Northwest Corner of Sec. 15 Township 32 Range 24

On the 28th day of January, 1964, the described corner was evidenced by area resurvey

and to perpetuate the location of said corner, at the exact location thereof, a permanent marker was placed consisting of a cast iron monument

AND on the 19th day of October, 2010, said permanent marker was found flush with the surface and the ties were updated

Updated reference ties are as shown below.



Revision Date

4/21/11

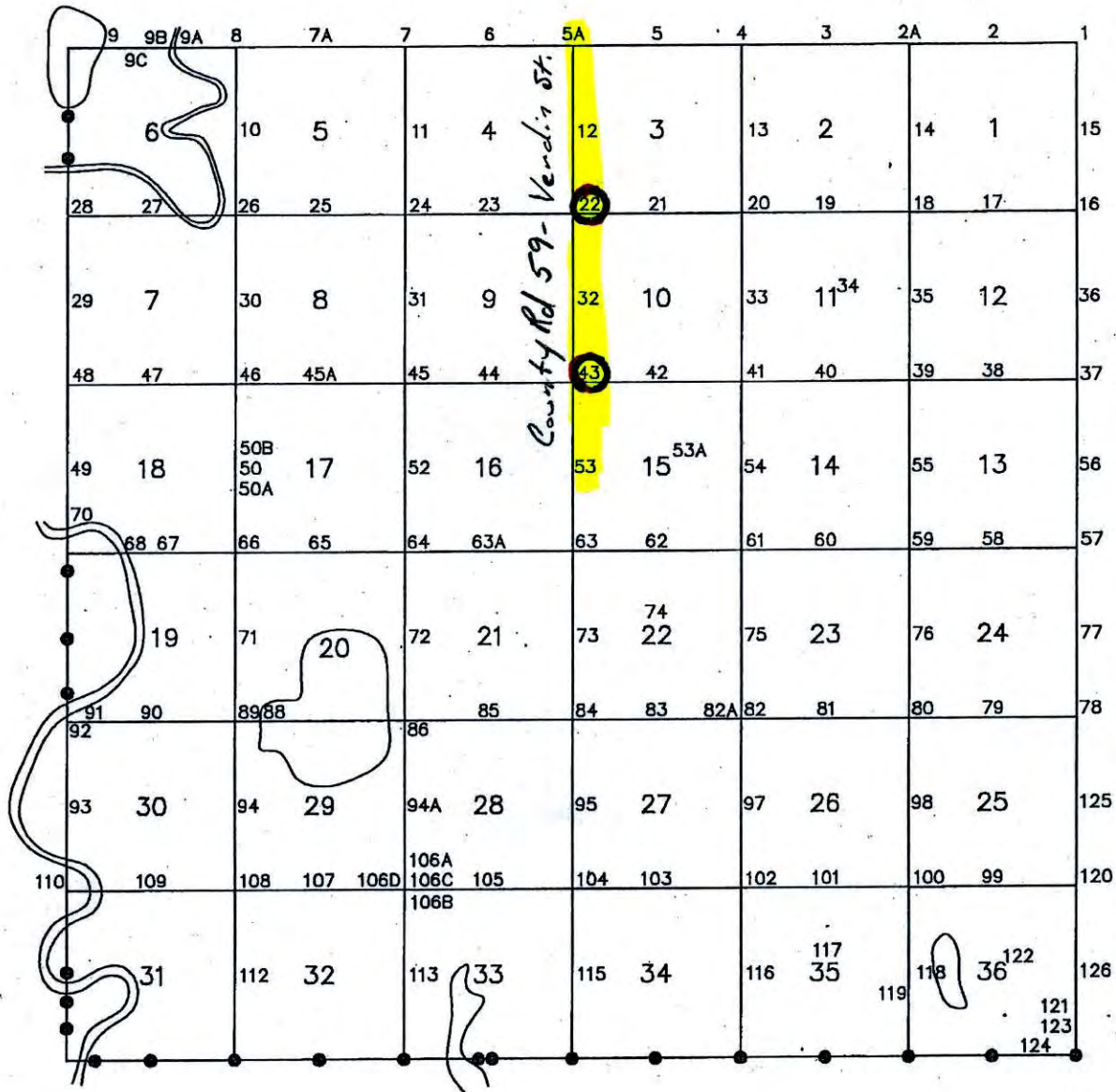
N.A.D. 1983 Coordinates  
(1996 Adjustment)

County Project Coordinates	
Northing	185634.1085
Easting	484670.4536
Date	7/13/00

I hereby certify that this United States public land survey monument record is correct and complete to the best of my knowledge and belief.

*Larry D. Hoium*      Date 4/21/11  
 Larry D. Hoium, Anoka County Surveyor  
 Minnesota License Number 18165

# ANDOVER T-32 R-24



# CERTIFICATE OF LOCATION OF GOVERNMENT CORNER

County of Anoka

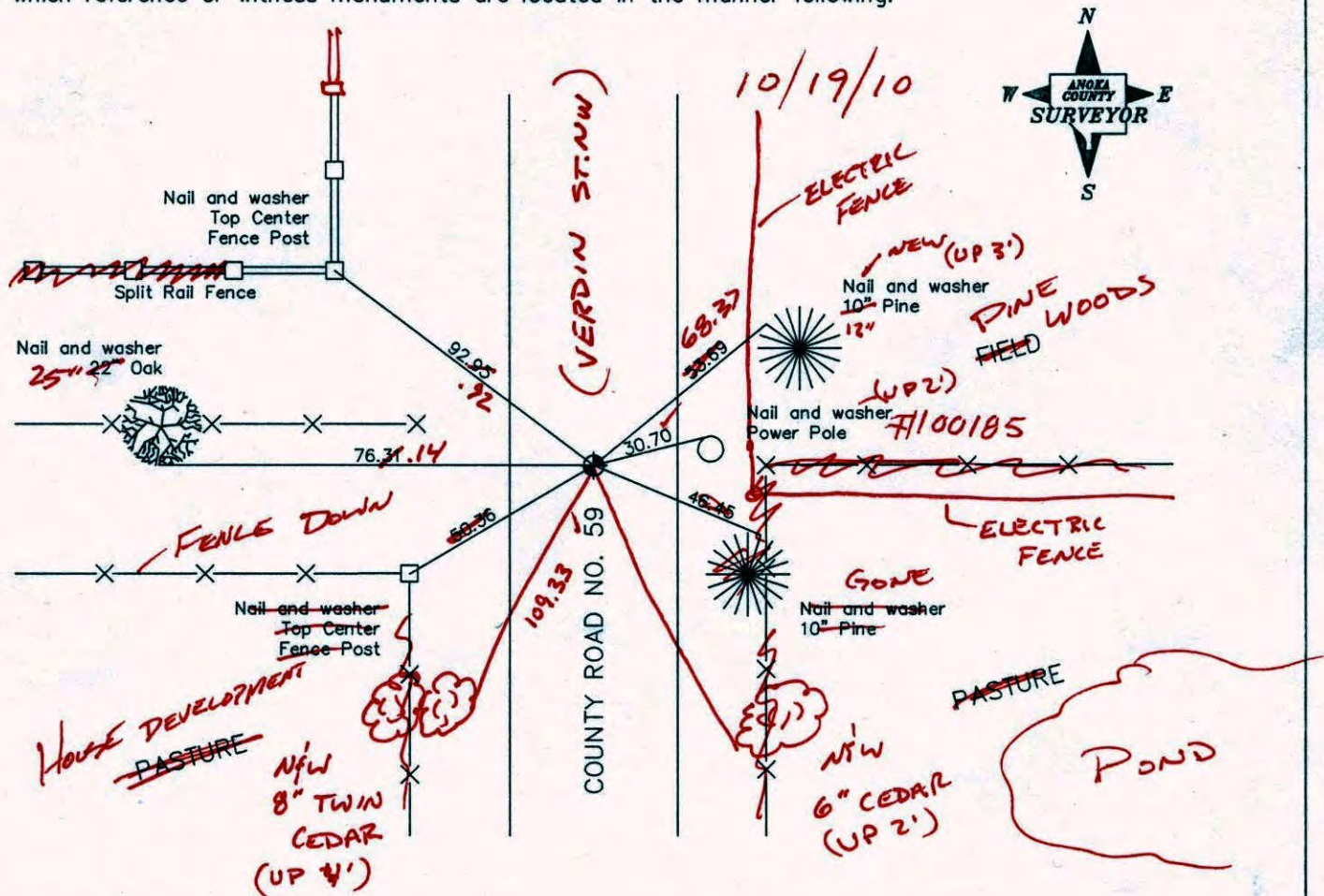
State of Minnesota

## Northwest Corner of Sec. 15 Township 32 Range 24

I hereby certify that on the 28th day of January, 1964, I found the described corner which was evidenced by area resurvey

and I further certify that to perpetuate the location of said corner, I did, at the exact location thereof, place a permanent marker consisting of a cast iron monument (FLUSH)

which reference or witness monuments are located in the manner following:



Revised date

7/21/93
5/12/97
7/13/00

N.A.D. 1983 Co-ordinates

County Project Co-ordinates		State Plane Co-ordinates	
Northing	185634.1085	Y	_____
Easting	484670.4536	X	_____

Date 7/13/00

# CERTIFICATE OF LOCATION OF GOVERNMENT CORNER

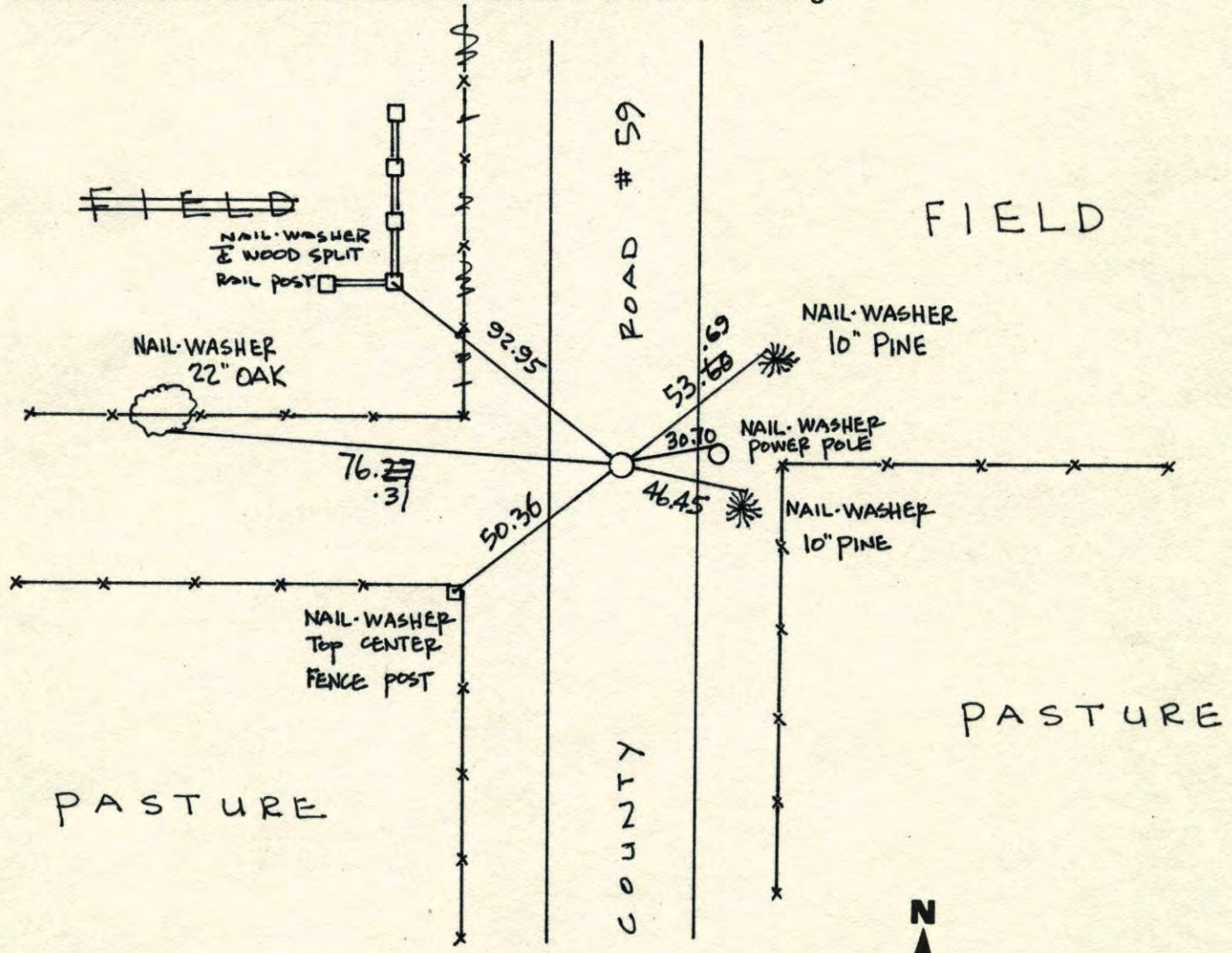
County of Anoka State of Minnesota

NORTHWEST Corner of Sec. 15 Township 32 Range 24

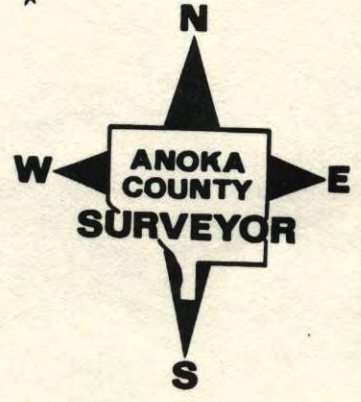
I hereby certify that on the 28 day of JANUARY, 19 64, I found the described corner which was evidenced by AREA RESURVEY

and I further certify that to perpetuate the location of said corner, I did, at the exact location thereof, place a permanent marker consisting of CAST IRON MONUMENT

which reference or witness monuments are located in the manner following:



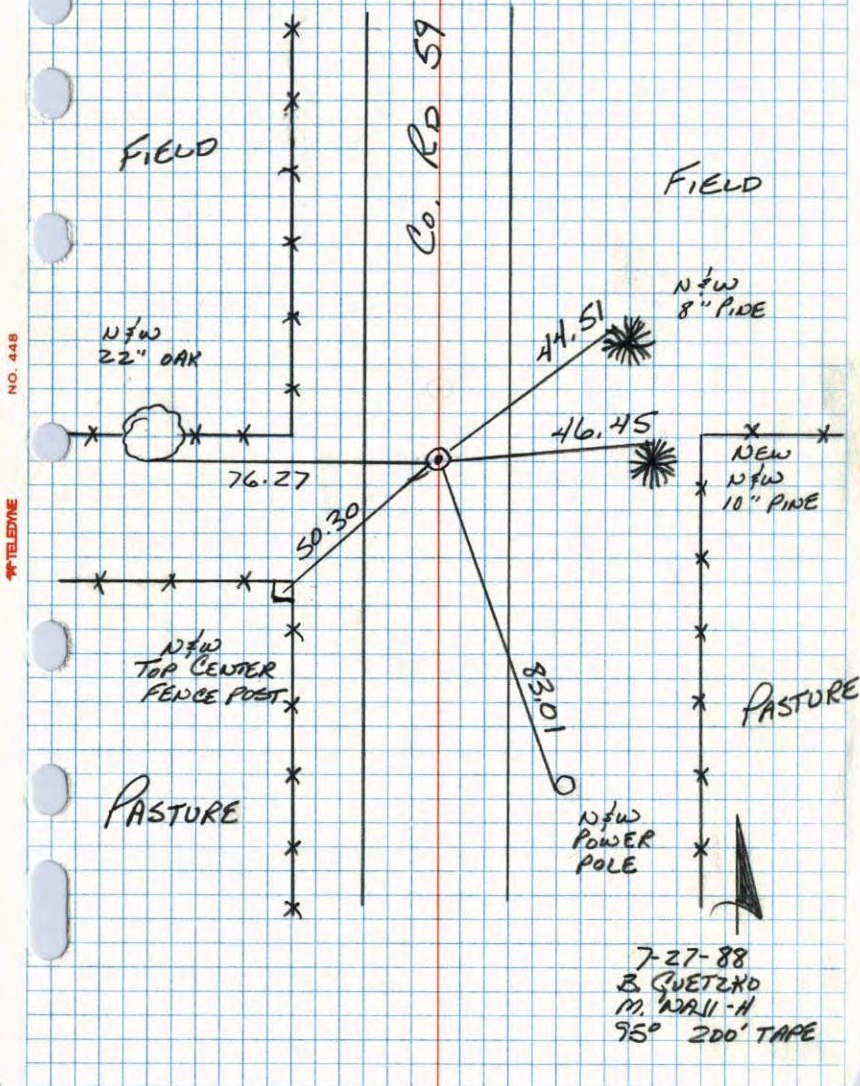
Revised date	Revised date	Revised date
6-23-82		
5-30-81		
7-27-88		
7-21-93		
5-12-97		
7-13-00		



RAISED

N.W. Cor. Sec 15 T32 R24

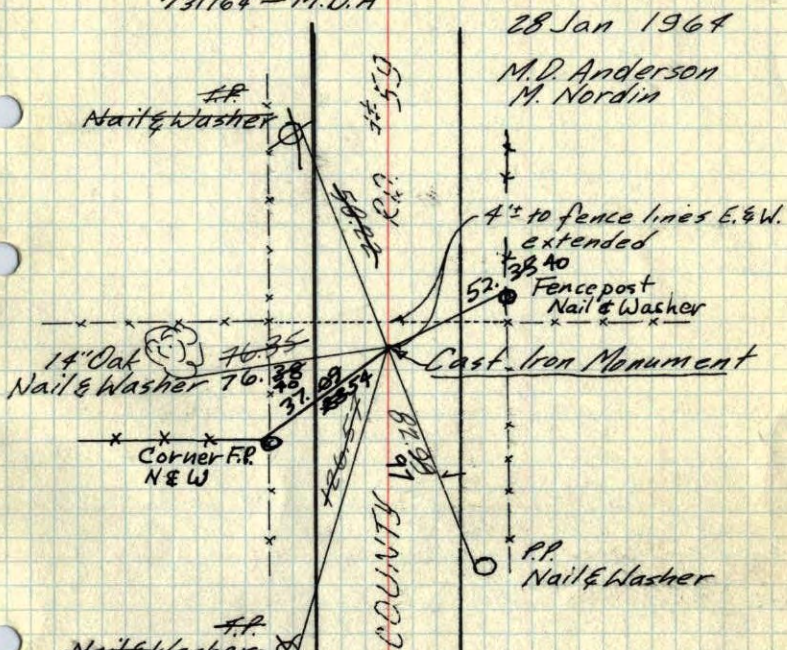
RETIED CAST IRON MONUMENT



7-27-88  
B. QUETZKO  
M. WALL-H  
95° 200' TAPE

N.W. Cor. Sec. 15-32-24

Set P.K. spike from Re-survey  
Replaced with Cast Iron Monument  
7/31/64 - M.D.A.



28 Jan 1964

M.D. Anderson  
M. Nordin

4" to fence lines E. & W.  
extended

52' Fencepost  
Nail & Washer

Cast Iron Monument

P.P.  
Nail & Washer

Tie Check  
6-22-82  
B. Olson  
R. Bauer  
D. Brien

TIE CHECK  
6-23-82  
P. ROSS  
P. HORNBY  
J. BEIER

Tie Check  
July 10, 1968  
H. Larson  
R. Olson  
P. Pieh

ROLAND W. ANDERSON  
COUNTY SURVEYOR  
ANOKA COUNTY, MINNESOTA

TIE CHECK  
MAY 28, 1976  
G. ADAMS  
R. SANNEBERG

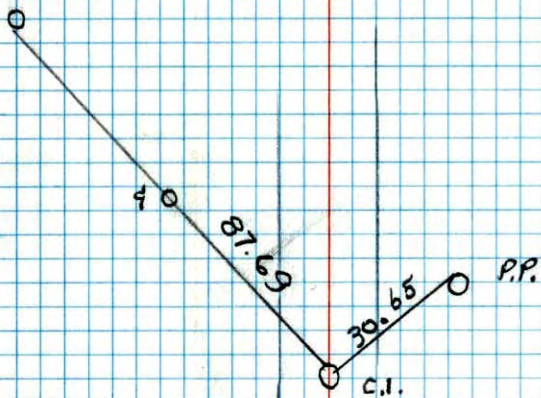
TEMPERATURE CORRECTED  
AND HORIZONTALLY  
TAPED MEASUREMENTS

TIE CHECK  
6-1-79  
B. STEPHENS  
P. ROSS

TRANSIT TIE  
 NW COR SEC. 15 T32 R24

SET 1/2" IRON PIPE WITH SIGN + POST

WEST EDGE  
 CHIMNEY



NO. 448

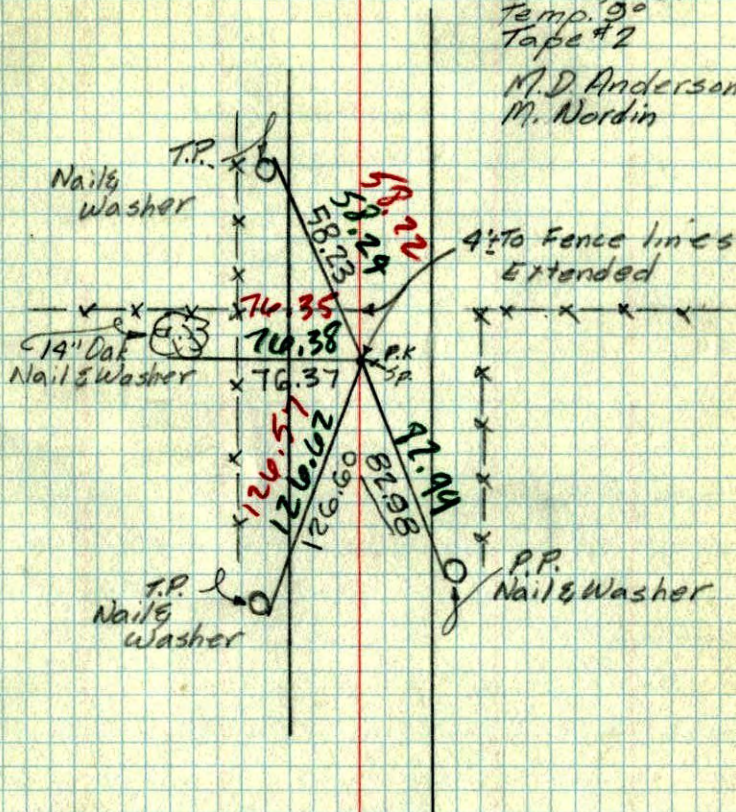
TELEPHONE

N. W. Cor. Sec. 15-32-24

Set P.K. Spike

Jan. 28, 1964  
 Temp. 9°  
 Tape #2

M. D. Anderson  
 M. Nordin



TEMP. & TAPE  
 CORR. IN RED