

# CERTIFICATE OF LOCATION OF GOVERNMENT CORNER

County of Anoka

State of Minnesota

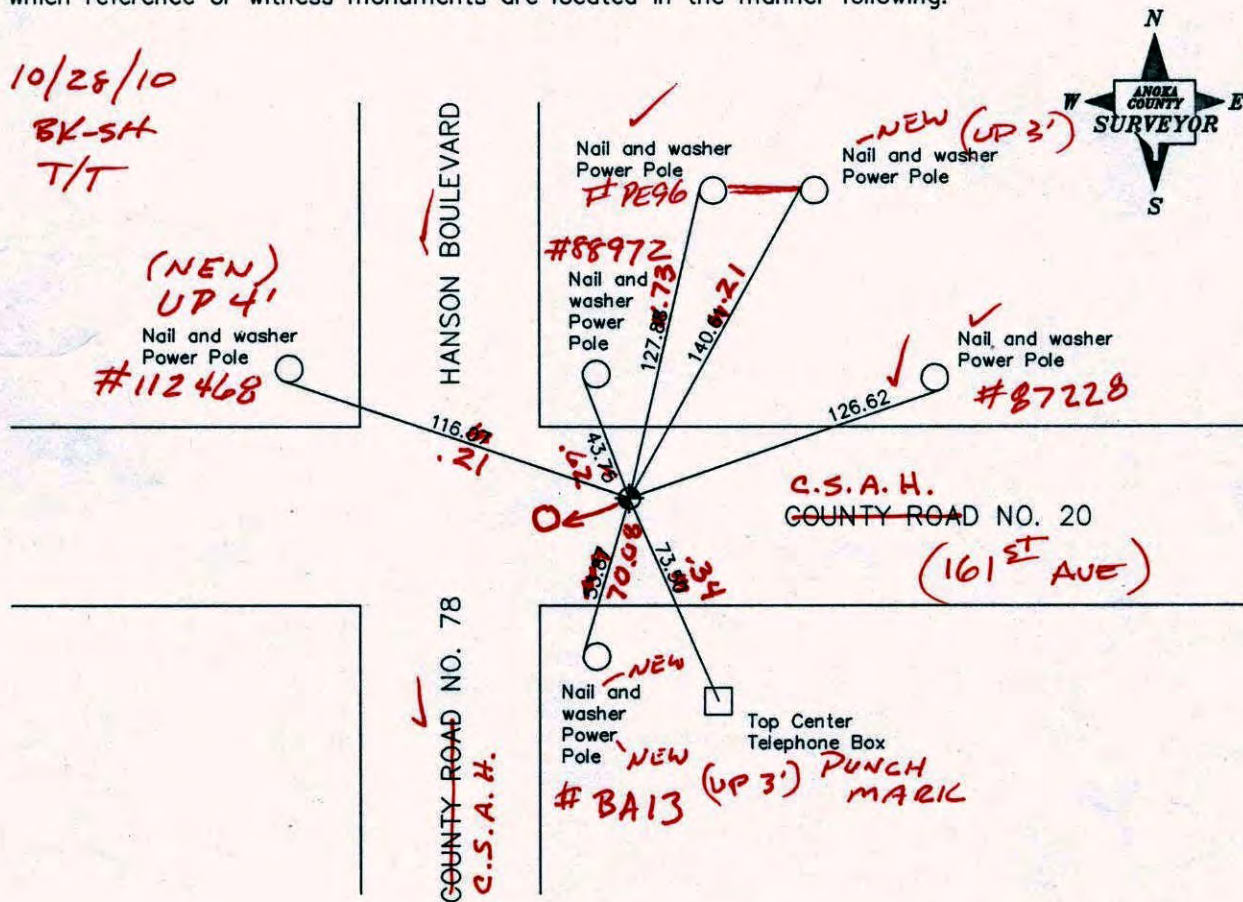
West 1/4 Corner of Sec. 14 Township 32 Range 24

I hereby certify that on the 8th day of February, 1963, I found the described corner which was evidenced by area resurvey

and I further certify that to perpetuate the location of said corner, I did, at the exact location thereof, place a permanent marker consisting of a cast iron monument

**(FLUSH)**

which reference or witness monuments are located in the manner following:



Revised date

10/20/87
7/15/93
8/4/00

N.A.D. 1983 Co-ordinates

County Project Co-ordinates	State Plane Co-ordinates
Northing <u>182884.2254</u>	Y _____
Easting <u>489882.0485</u>	X _____

Date 8/4/00

# CERTIFICATE OF LOCATION OF GOVERNMENT CORNER

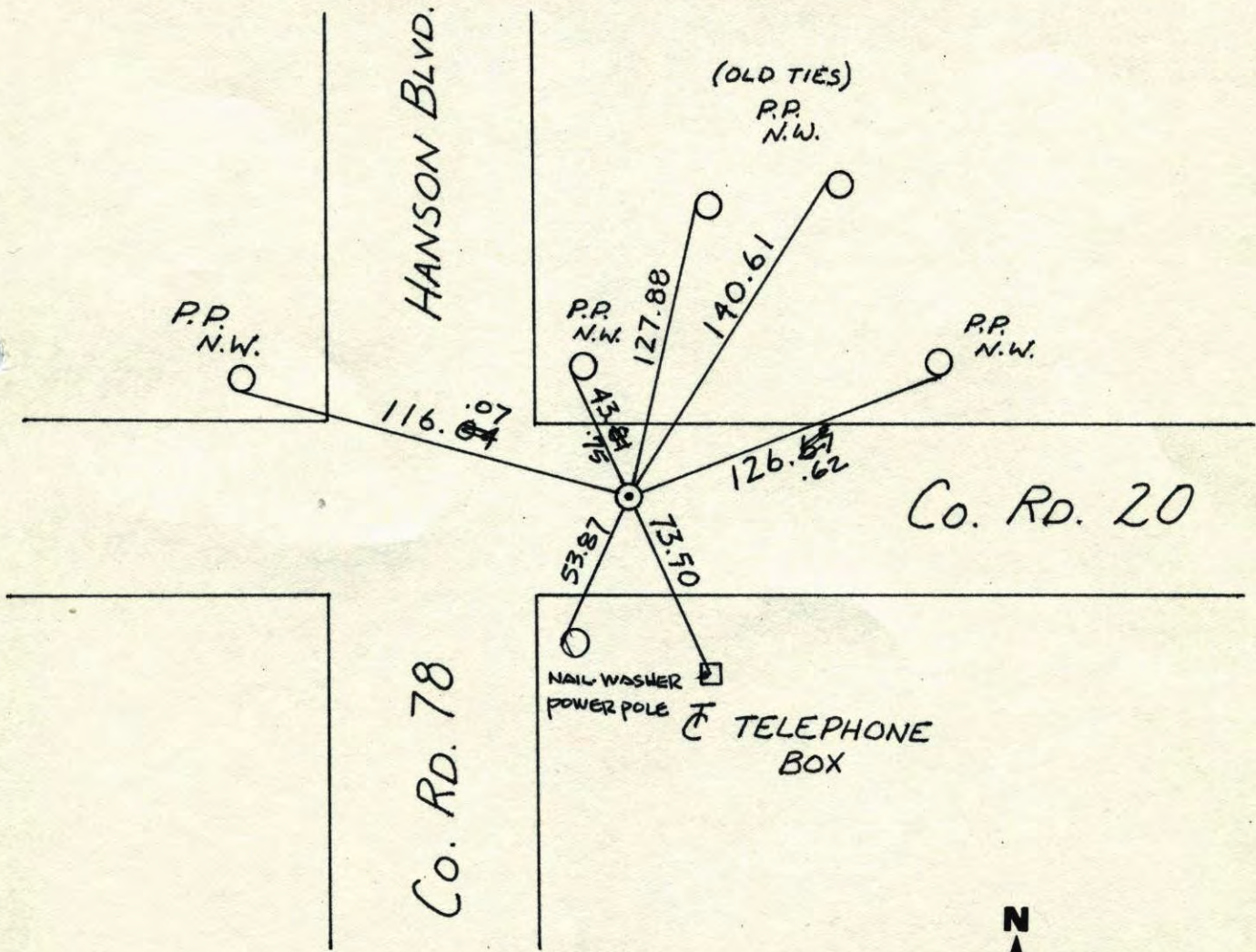
County of Anoka                      State of Minnesota

WEST QTR. Corner of Sec. 14 Township 32 Range 24

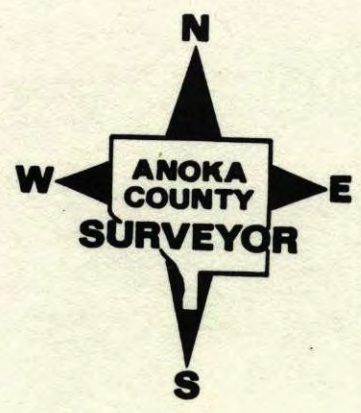
I hereby certify that on the 8 day of FEB., 19 63, I found the described corner which was evidenced by AREA RESURVEY

and I further certify that to perpetuate the location of said corner, I did, at the exact location thereof, place a permanent marker consisting of CAST IRON MON.

which reference or witness monuments are located in the manner following:



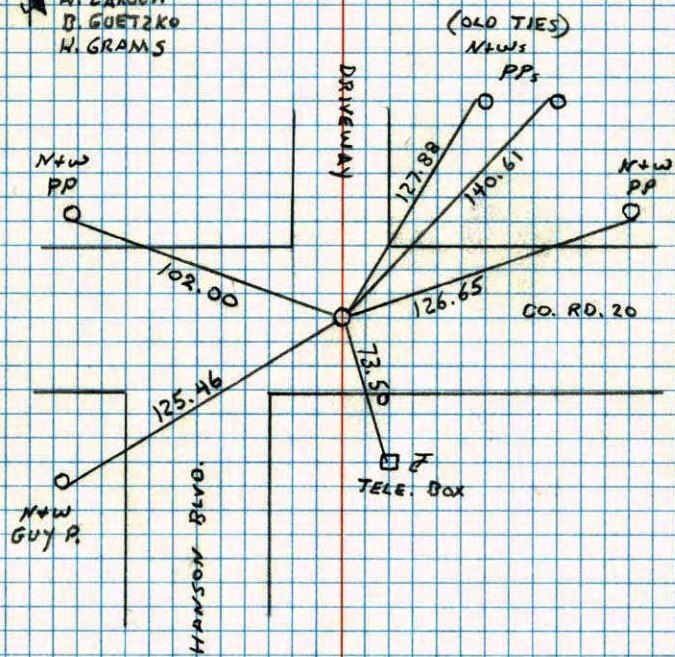
Revised date	Revised date	Revised date
10-20-87		
7-15-93		
8-4-00		



W 1/4 CORNER SECTION 14 T32 R24

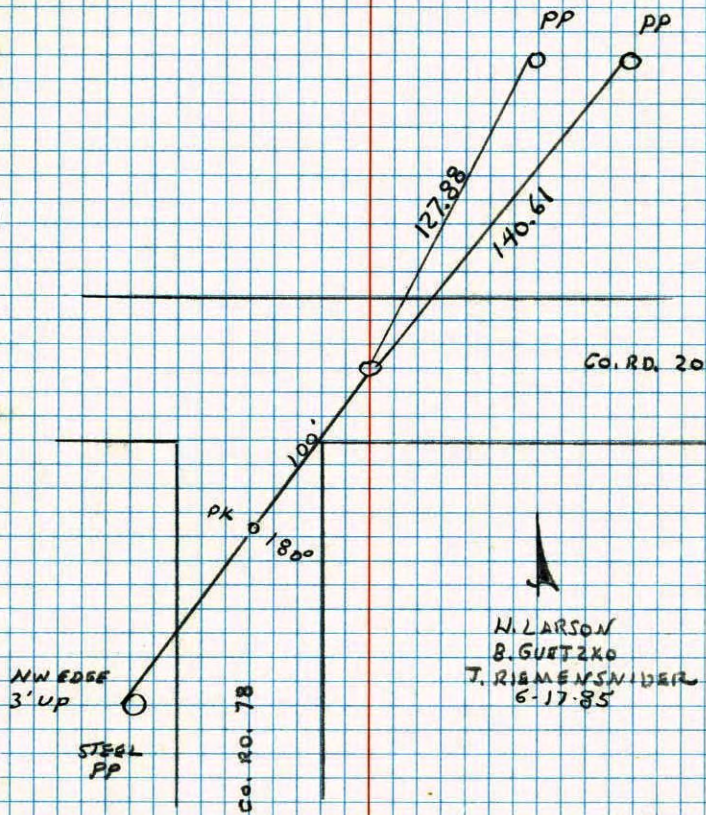
RETIED AFTER CONSTRUCTION. CORNER  
WAS PUT BACK FROM CONSTRUCTION TIES  
GIVEN FLUSH PKs 2.00 NORTH AND EAST.

#3 60°  
4-30-86  
N. LARSON  
B. GUETZKO  
H. GRAMS

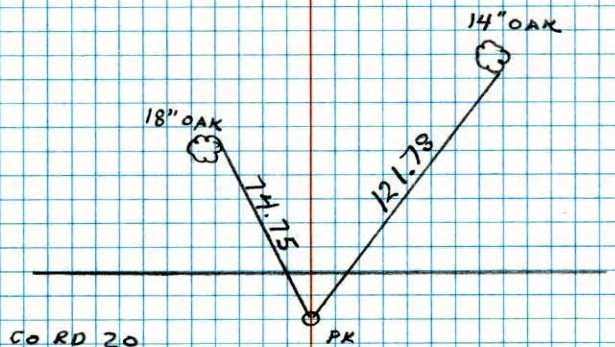


CONSTRUCTION TIES  
COR. SET

W 1/4 COR. SEC. 14 T32 R24



POL NEAR CENTER OF SEC. 14 T32 R24

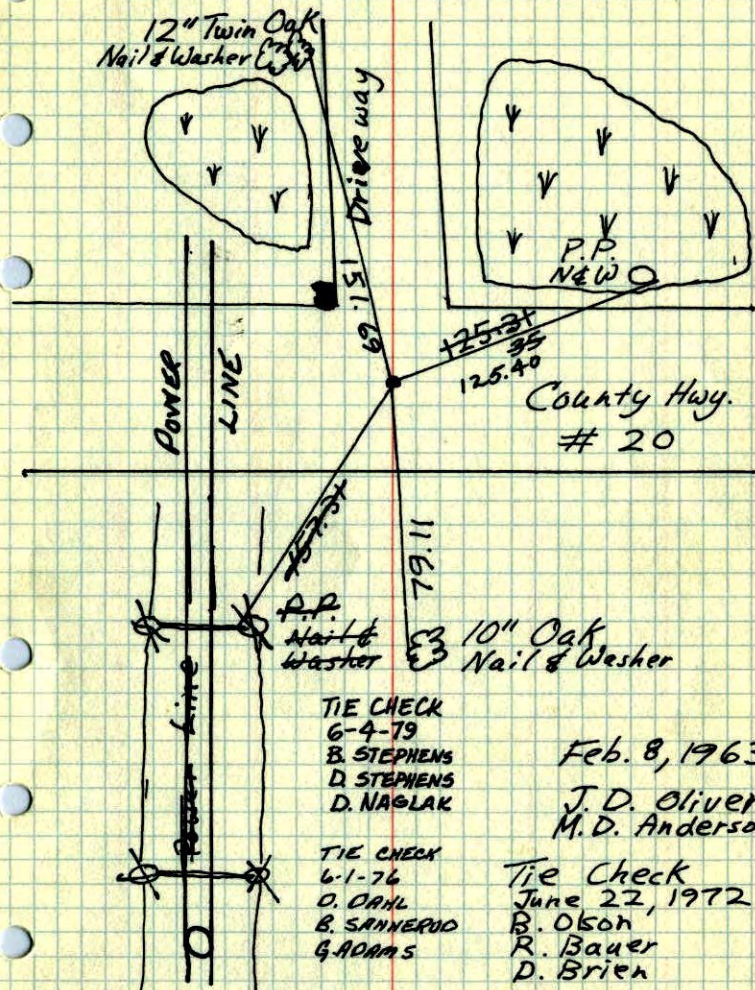


Co RD 20

H. LARSON  
B. GUETZKA  
T. RIEMENSNIER  
6-17-85

W 1/4 Cor. Sec. 14 - T32 - R24

Set Cast Iron Mon. in blacktop.  
P.K. spikes 2' North & East.



TEMPERATURE CORRECTED  
AND HORIZONTALLY  
TAPED MEASUREMENTS

ROLAND W. ANDERSON  
COUNTY SURVEYOR  
ANOKA COUNTY, MINNESOTA

see  
uck

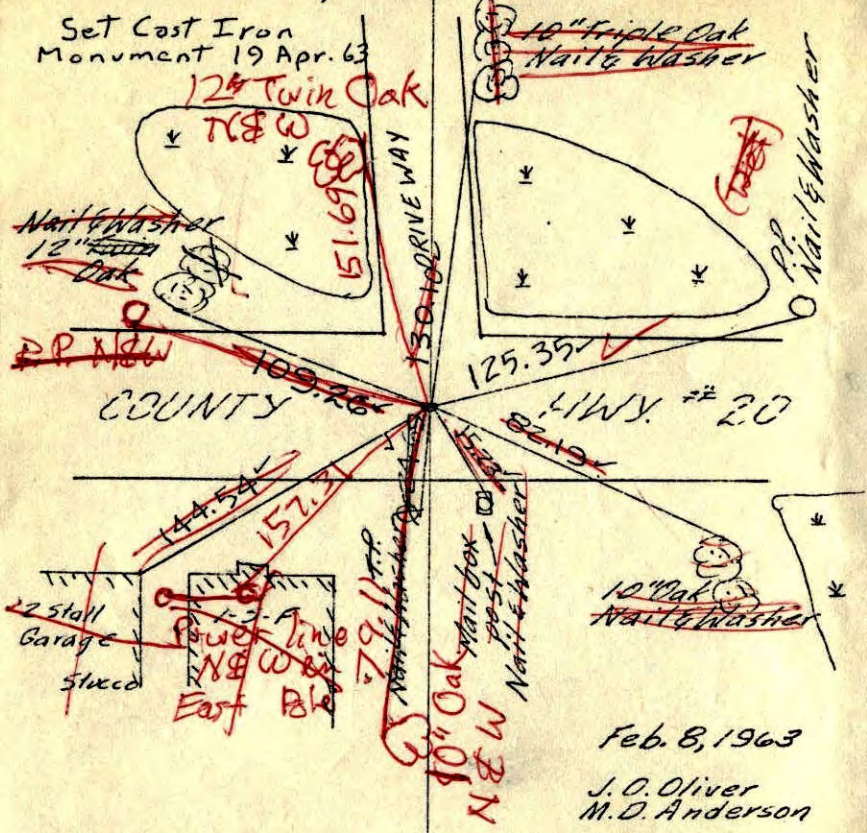
(See Redrawn Tie)

Tie Check  
6/22/72  
R.O.B.  
D.B.  
54

W 1/4 Cor. Sec. 14-T32-R24

Set R.R. spike in blacktop from resurvey of Grow

Set Cast Iron Monument 19 Apr. 63



TEMPERATURE CORRECTED  
AND HORIZONTALLY  
TAPED MEASUREMENTS

ROLAND W. ANDERSON  
COUNTY SURVEYOR  
ANOKA COUNTY, MINNESOTA

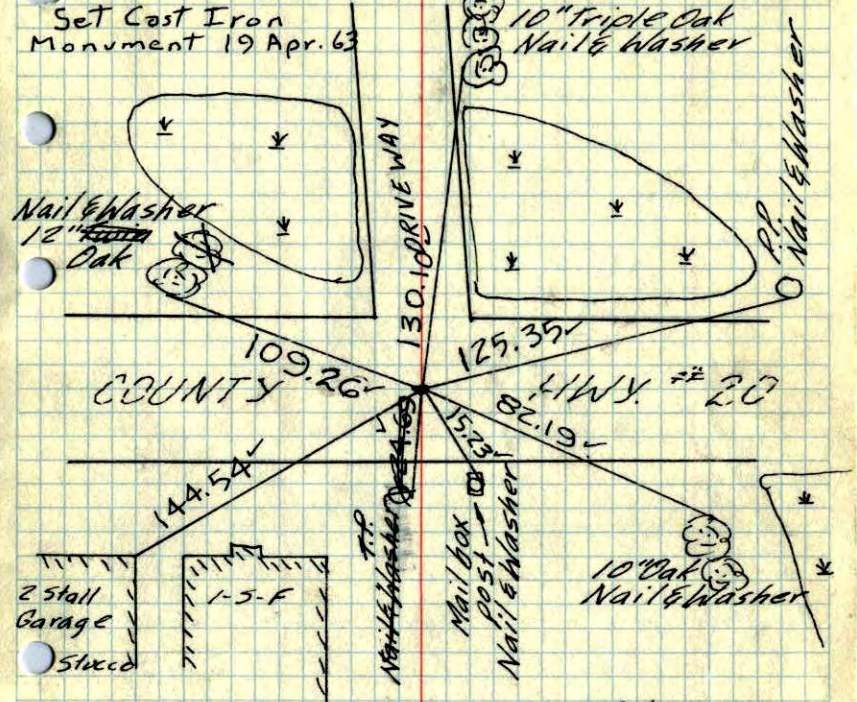
Feb. 8, 1963  
J.O. Oliver  
M.D. Anderson  
Tie check  
Aug. 17, 1964  
M.D. Anderson  
J. Dunlop  
All Ties check good.

Tie Check  
July 11, 1968  
H. Larson  
R. Olson  
P. Pich

W 1/4 Cor. Sec. 14-T32-R24

Set R.R. spike in blacktop from resurvey of Grow

Set Cast Iron Monument 19 Apr. 63



TEMPERATURE CORRECTED  
AND HORIZONTALLY  
TAPED MEASUREMENTS

ROLAND W. ANDERSON  
COUNTY SURVEYOR  
ANOKA COUNTY, MINNESOTA

Feb. 8, 1963  
J.O. Oliver  
M.D. Anderson  
Tie check  
Aug. 17, 1964  
M.D. Anderson  
J. Dunlop  
All Ties check good.

Tie Check  
July 11, 1968  
H. Larson  
R. Olson  
P. Pich

W. 1/4 Cor. Sec. 14, T32, R24

Set R.R. Spk. in Blk Top from Resurvey

