

CERTIFICATE OF LOCATION OF GOVERNMENT CORNER

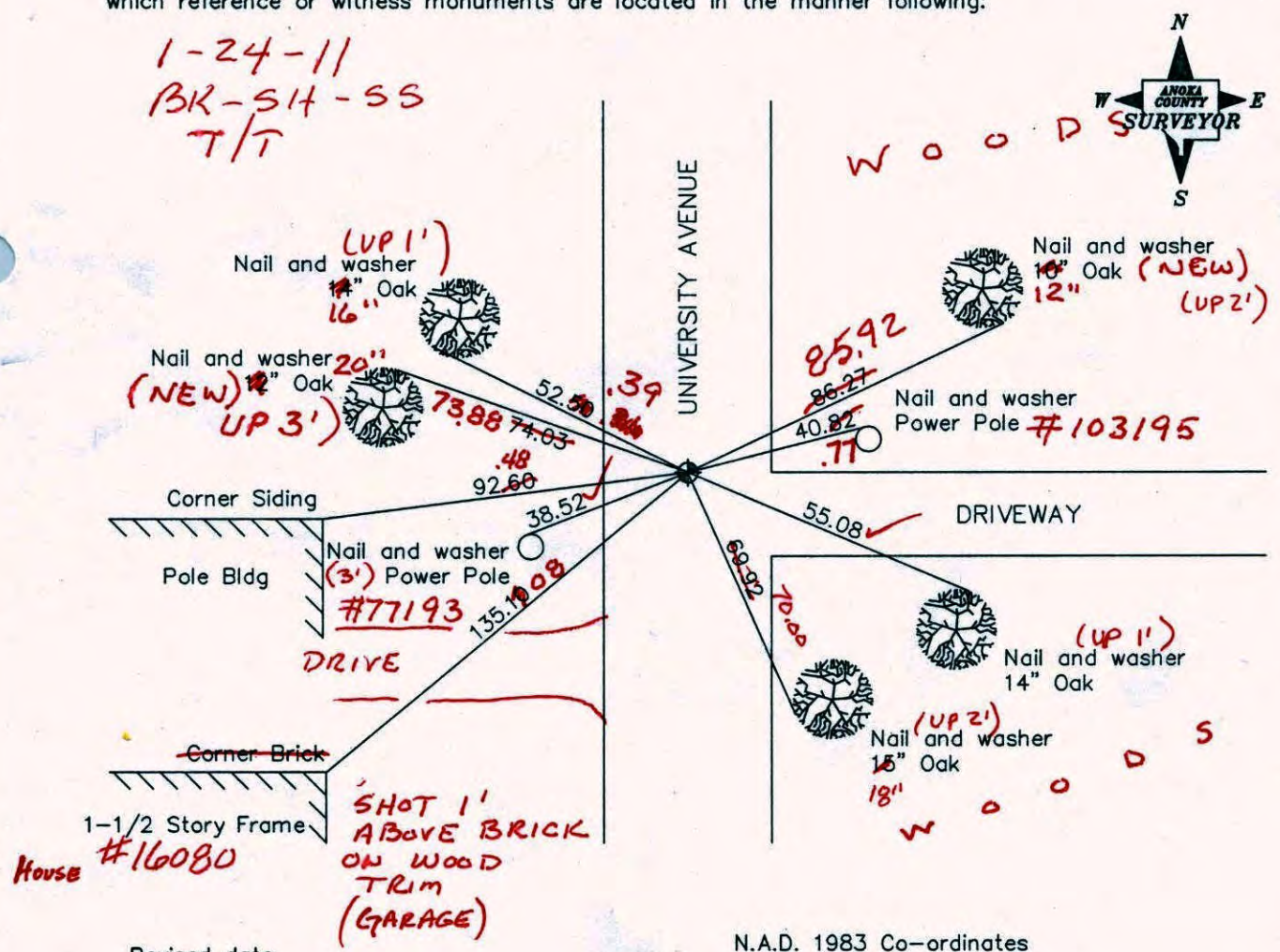
County of Anoka State of Minnesota

East 1/4 Corner of Sec. 13 Township 32 Range 24

I hereby certify that on the 4th day of September, 1962, I found the described corner which was evidenced by area resurvey

and I further certify that to perpetuate the location of said corner, I did, at the exact location thereof, place a permanent marker consisting of a cast iron monument ✓

which reference or witness monuments are located in the manner following:



N.A.D. 1983 Co-ordinates

Revised date

8/14/92
11/30/93
10/23/00

County Project Co-ordinates	
Northing	<u>182674.5133</u>
Easting	<u>500373.9545</u>

State Plane Co-ordinates	
Y	_____
X	_____

Date 10/23/00

CERTIFICATE OF LOCATION OF GOVERNMENT CORNER

County of Anoka

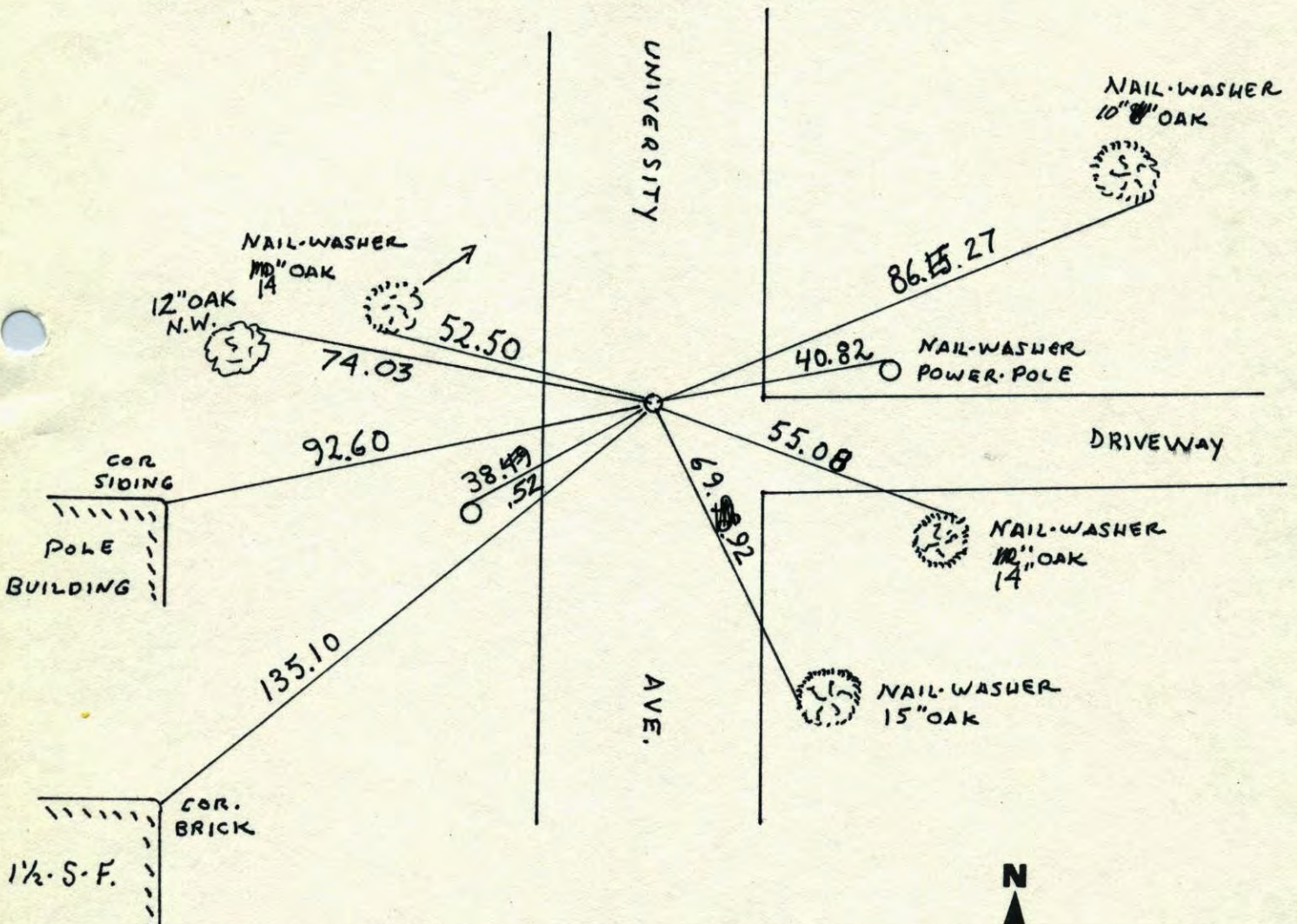
State of Minnesota

EAST 1/4 Corner of Sec. 13 Township 32 Range 24

I hereby certify that on the 4TH day of SEPT, 19 62, I found the described corner which was evidenced by AREA RESURVEY

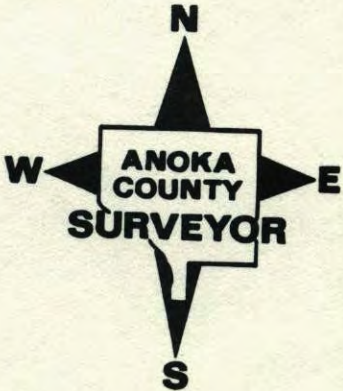
and I further certify that to perpetuate the location of said corner, I did, at the exact location thereof, place a permanent marker consisting of CAST IRON MONUMENT

which reference or witness monuments are located in the manner following:

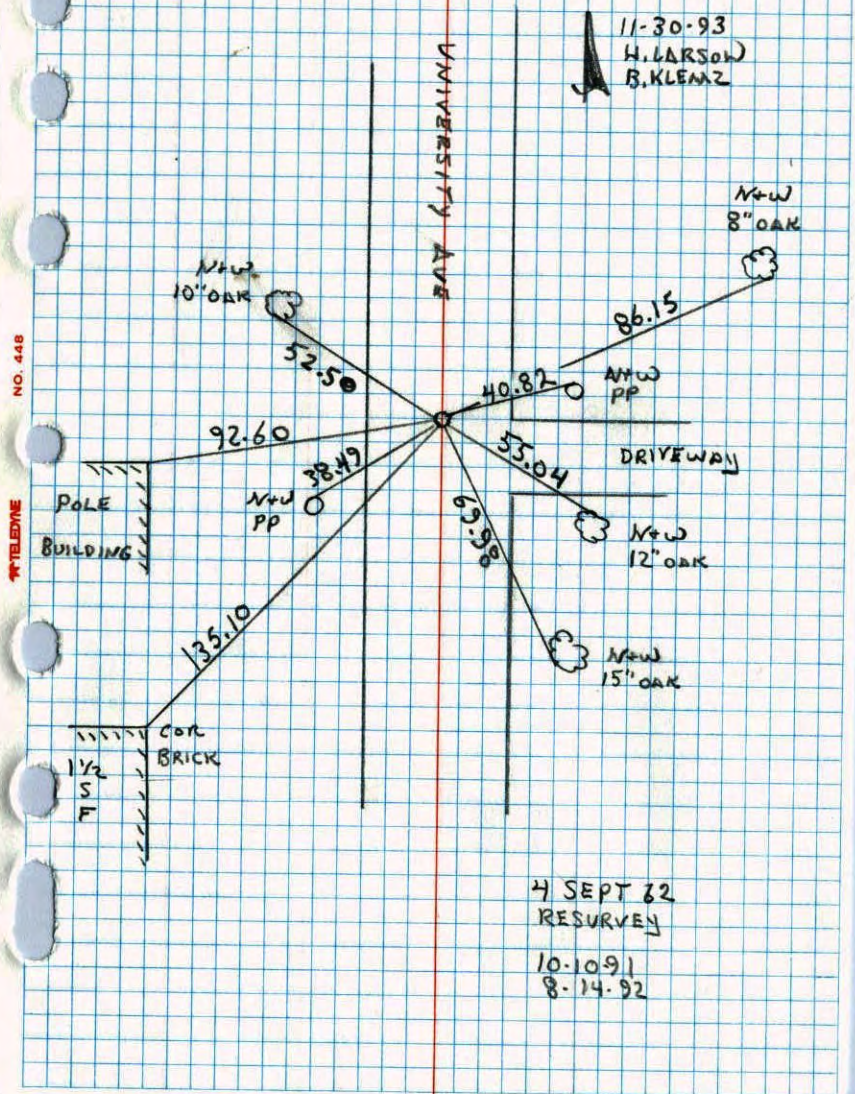


1 1/2 S.F.
COR. BRICK

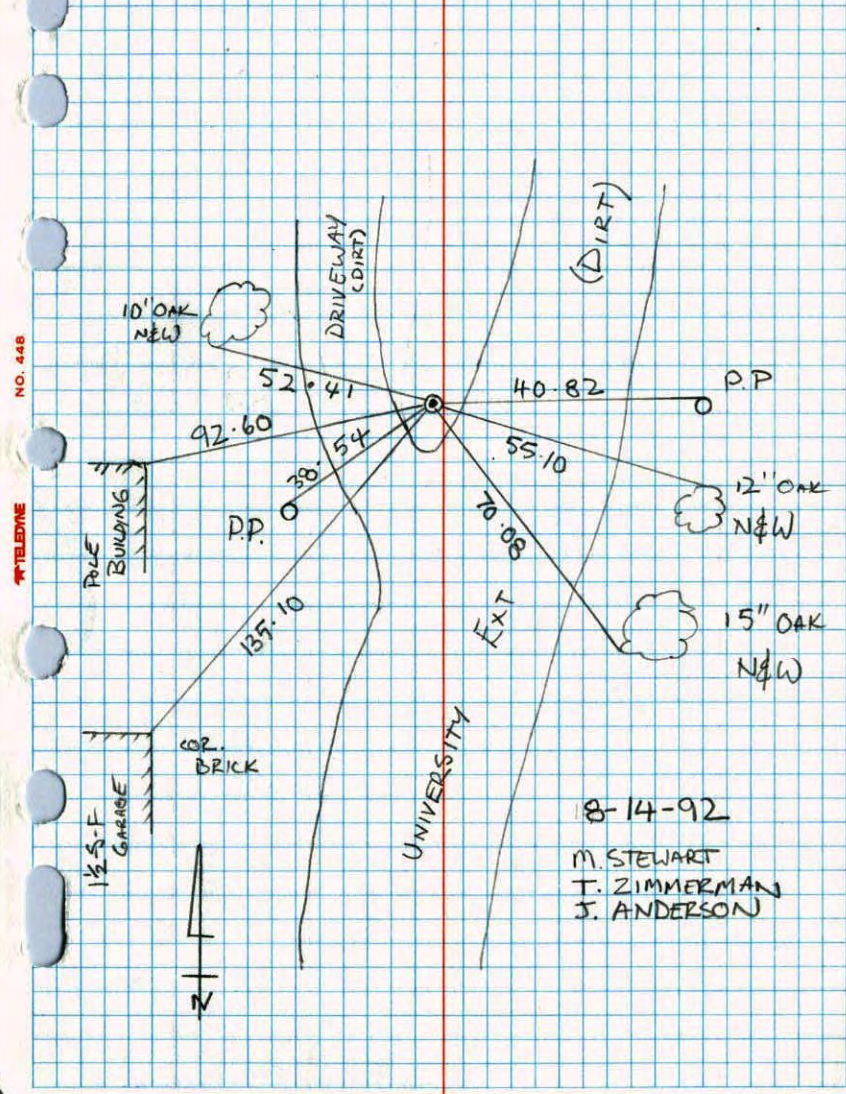
Revised date	Revised date	Revised date
10-10-91		
8-14-92		
11-30-93 ^{HL}		
10-23-00		



EAST 1/4 CORNER SECTION 13 T32 R24
 RESET AND RETIED CAST IRON AFTER ROAD
 CONSTRUCTION

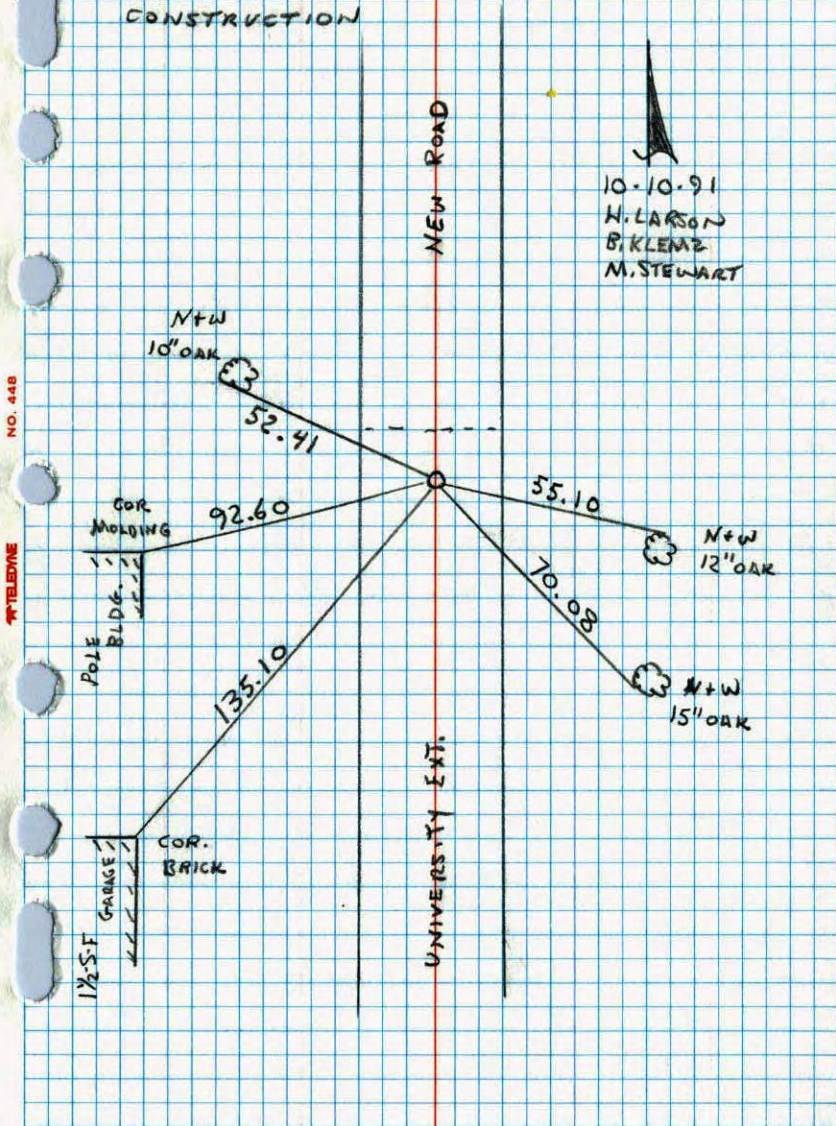


E 1/4 COR. SEC. 13 T32 R24
 REPLACED & RETIED CAST IRON



E 1/4 COR. SECTION 13 T32 R24

TOOK ADDITIONAL TIES FOR ROAD CONSTRUCTION



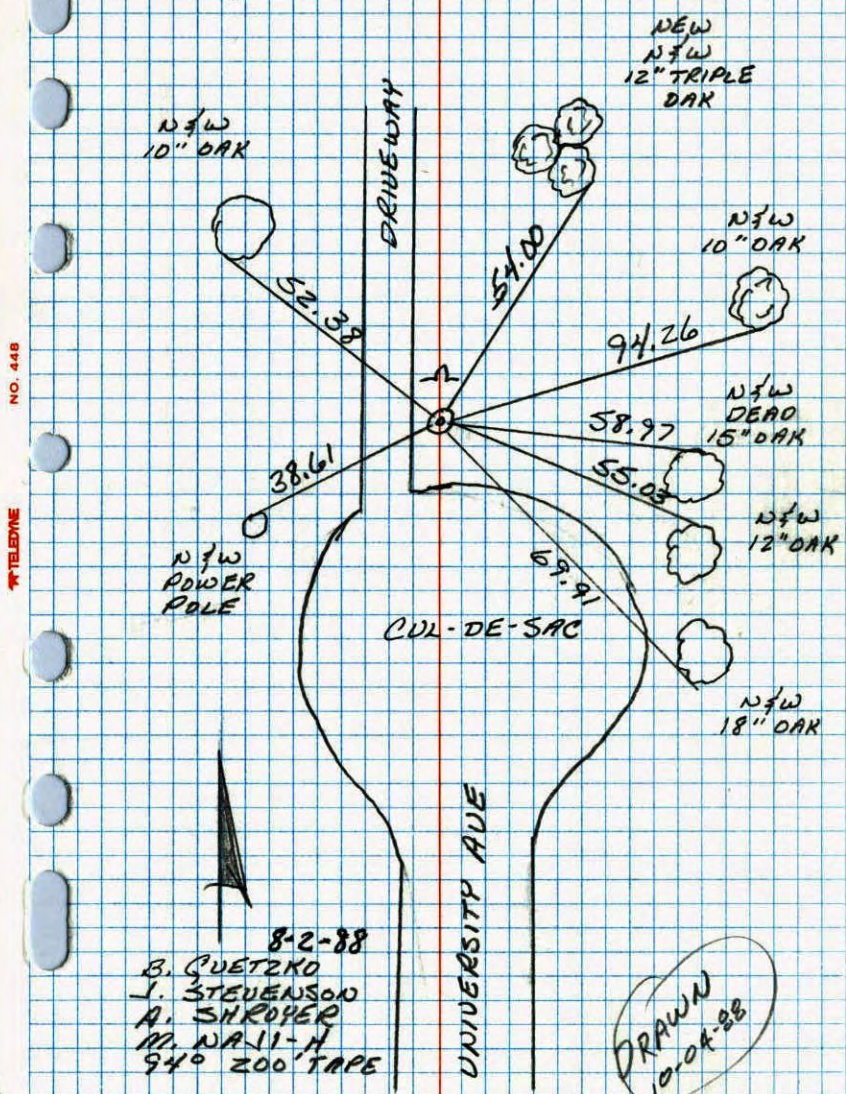
10-10-91
H. LARSON
B. KLENZ
M. STEWART

NO. 448

TELEPHONE

E 1/4 CORNER SEC 13 T32 R24

REPLACE CAST IRON MONUMENT REMOVED DURING DRIVEWAY CONSTRUCTION, & RETIED.



8-2-88
B. QUETZKO
J. STEVENSON
A. SHROYER
M. WAH-H
94° ZOO TAPE

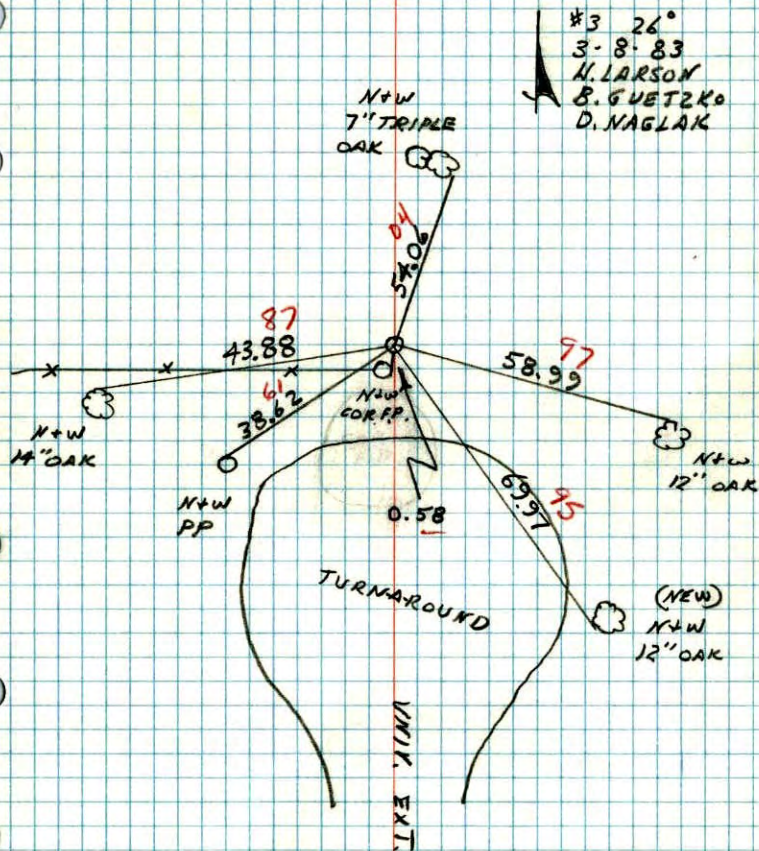
DRAWN
10-04-88

NO. 448

TELEPHONE

E 1/4 CORNER SECTION 13 T32 R24

STRAIGHTENED AND TOOK ADDITIONAL TIES TO CAST IRON MONUMENT SET FROM AREA RESURVEY C.I. FLUSH.



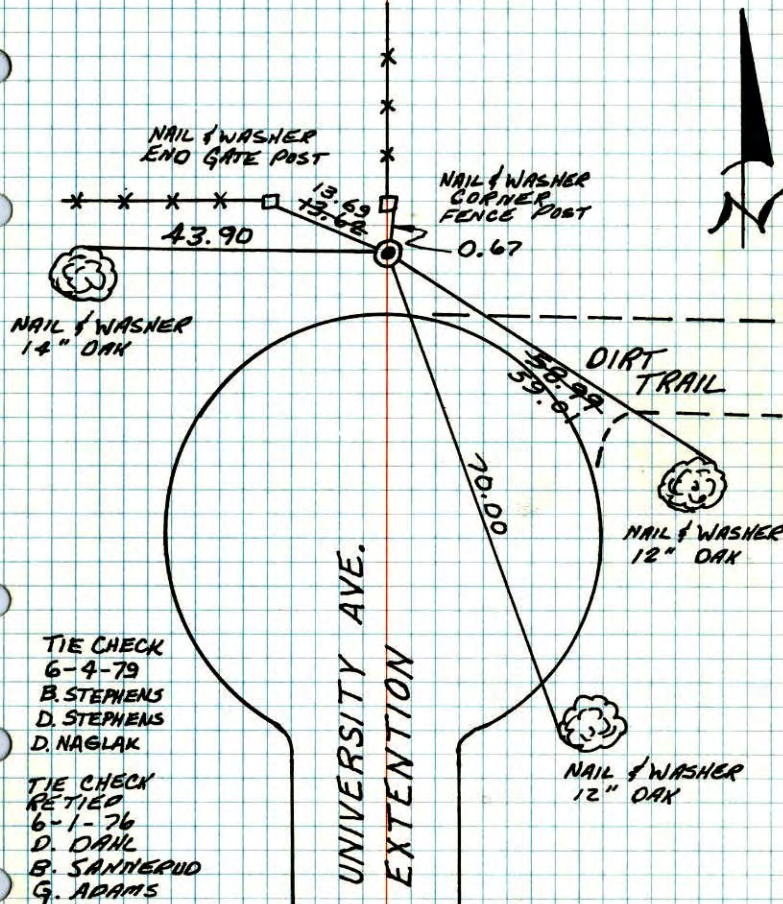
NO. 448

WTELETYPE

E 1/4 COR. SEC. 13-T32-R24

SET CAST IRON MONUMENT UP 0.2'

SET FROM RESURVEY OF GROW TOWNSHIP.
4-SEP-62
M.D. ANDERSON
R. CARLSON



TIE CHECK
6-4-79
B. STEPHENS
D. STEPHENS
D. NAGLAK

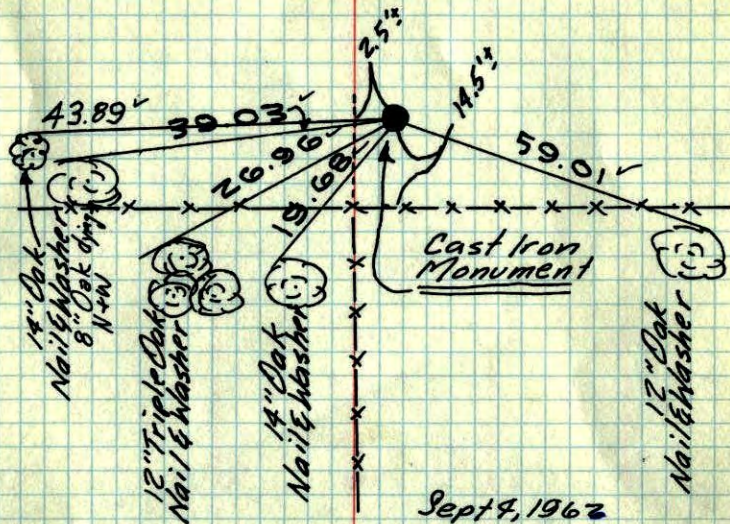
TIE CHECK
RETIED
6-1-76
D. DAHL
B. SANTIARD
G. ADAMS

TEMPERATURE CORRECTED
AND HORIZONTALLY
TAPED MEASUREMENTS

ROLAND W. ANDERSON
COUNTY SURVEYOR
ANOKA COUNTY, MINNESOTA

E 1/4 Cor. Sec. 13-32-24

Set Cast Iron Monument up 0.2'
Set from Re-Survey of Grow



Sept 4, 1962

M.D. Anderson
R. Carlson

Tie Check
6/22/72
B. Olson
R. Bauer
D. Brien

Tie Check
July 23, 1968
D. Powell
P. Pich

SEE TIES
NEW
IN TIE BOOK

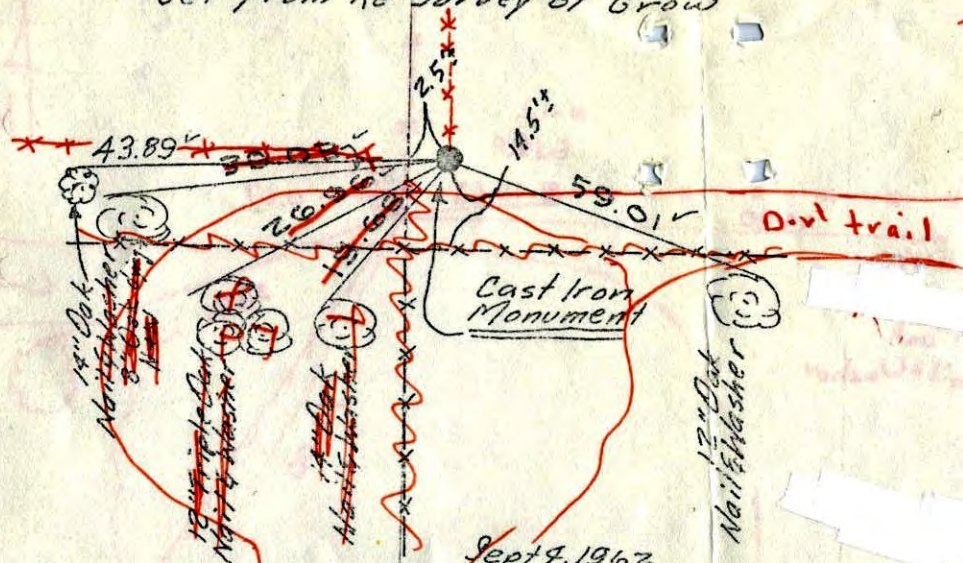
TEMPERATURE CORRECTED
AND HORIZONTALLY
TAPED MEASUREMENTS

ROLAND W. ANDERSON
COUNTY SURVEYOR
ANOKA COUNTY, MINNESOTA

E 1/4 Cor. Sec. 13-32-24

Set Cast Iron Monument up 0.2'
Set from Re-Survey of Grow

Redrawn on



Sept 4, 1962

M.D. Anderson
R. Carlson

Tie Check
6/22/72
B. Olson
R. Bauer
D. Brien

Tie Check
July 23, 1968
D. Powell
P. Pich

Univ. Ext.

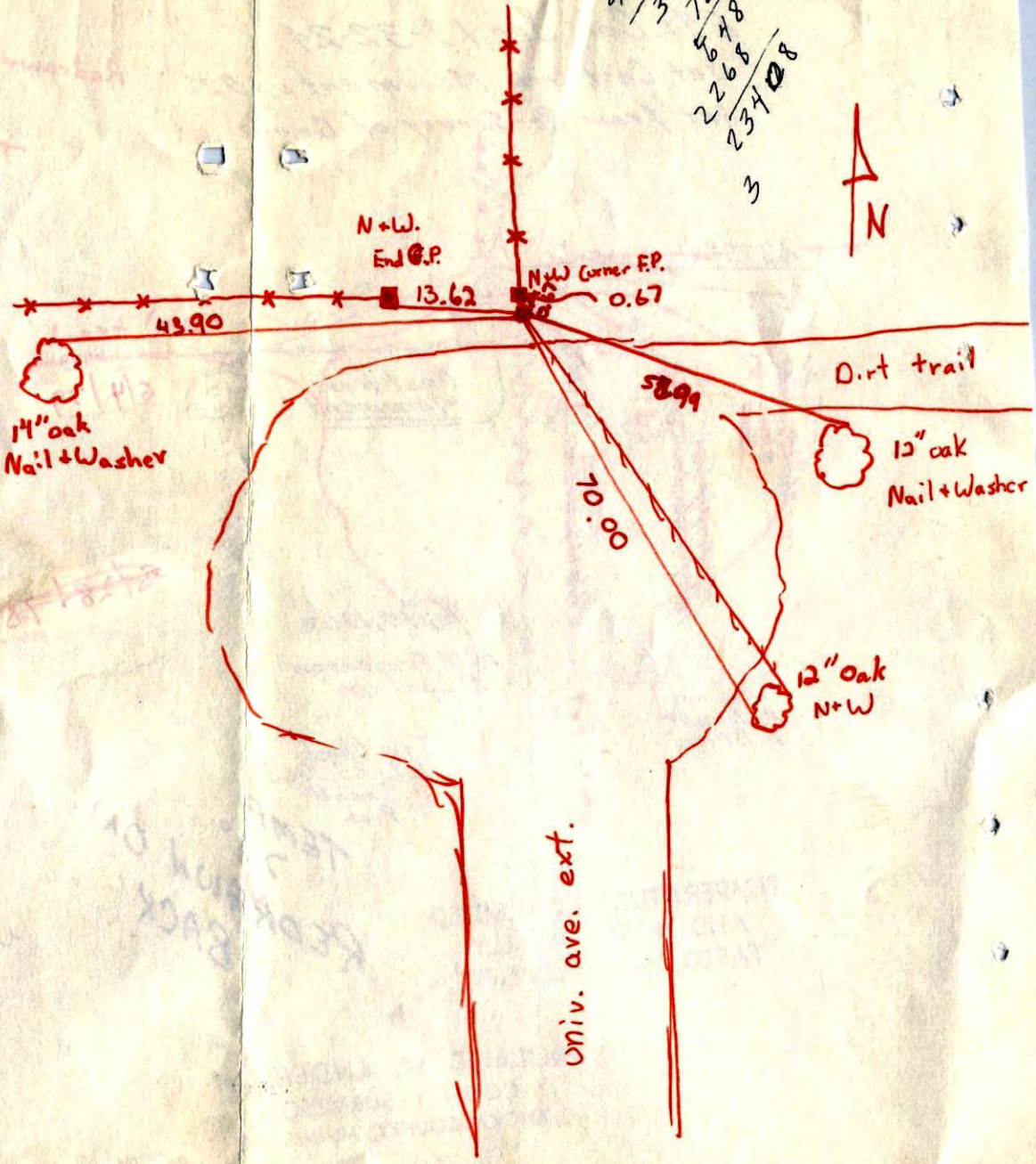
TEMP
78°
REDRAWN ON
BACK

TEMPERATURE CORRECTED
AND HORIZONTALLY
TAPED MEASUREMENTS

ROLAND W. ANDERSON
COUNTY SURVEYOR
ANOKA COUNTY, MINNESOTA

Tie
6-
D.
B.
G.

$$\begin{array}{r} 904 \\ 9010 \\ \hline 327 \\ 22578 \\ \hline 23408 \\ 3 \end{array}$$



E 1/4 Cor. Sec. 13-32-24

Set Cast Iron Monument
 up 0.2'
 Set from Resurvey of Grow



Sept. 4, 1962
 M.D. Anderson
 R.M. Carlson
 Temp. 60°

