

CERTIFICATE OF LOCATION OF GOVERNMENT CORNER

County of Anoka

State of Minnesota

North 1/4 Corner of Sec. 24 Township 32 Range 24

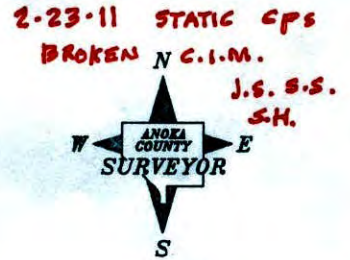
I hereby certify that on the 1st day of June, 1983, I found the described corner which was evidenced by area resurvey

ANDOVER
+ MON. UNDER BLACKTOP
(1-26-11)
+ BROKEN OFF/TIED OUT CTR. OF FIN (2-8-11)

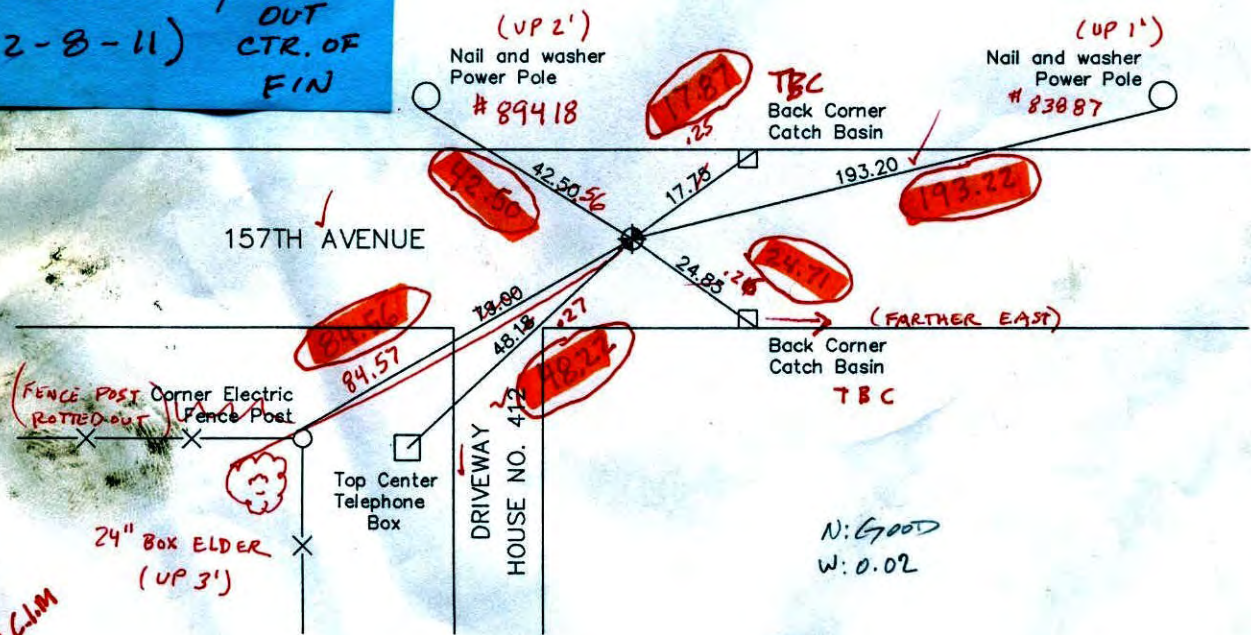
that to perpetuate the location of said corner, I did, at the exact location a permanent marker consisting of a cast iron monument ~~(BROKEN OFF)~~

PK'S 2' N + 2' E

monuments are located in the manner following:



CIM



J.S. S.S. 2-22-11 VRS BROKEN C.I.M. 180085.1905 497742.2277

Revised date **2-8-11**

N.A.D. 1983 Co-ordinates

8/2/88
7/23/93
12/1/00

BK-55
T/H

County Project Co-ordinates	
Northing	180085.2165
Easting	497742.2382

State Plane Co-ordinates	
Y	_____
X	_____

Date **12/1/00**

3-1-11 180085.196 497742.203
RESET C.I.M. TO C.I.M.
J.S. S.S. VRS COORDS TO QUALITY CLOS

CERTIFICATE OF LOCATION OF GOVERNMENT CORNER

County of Anoka

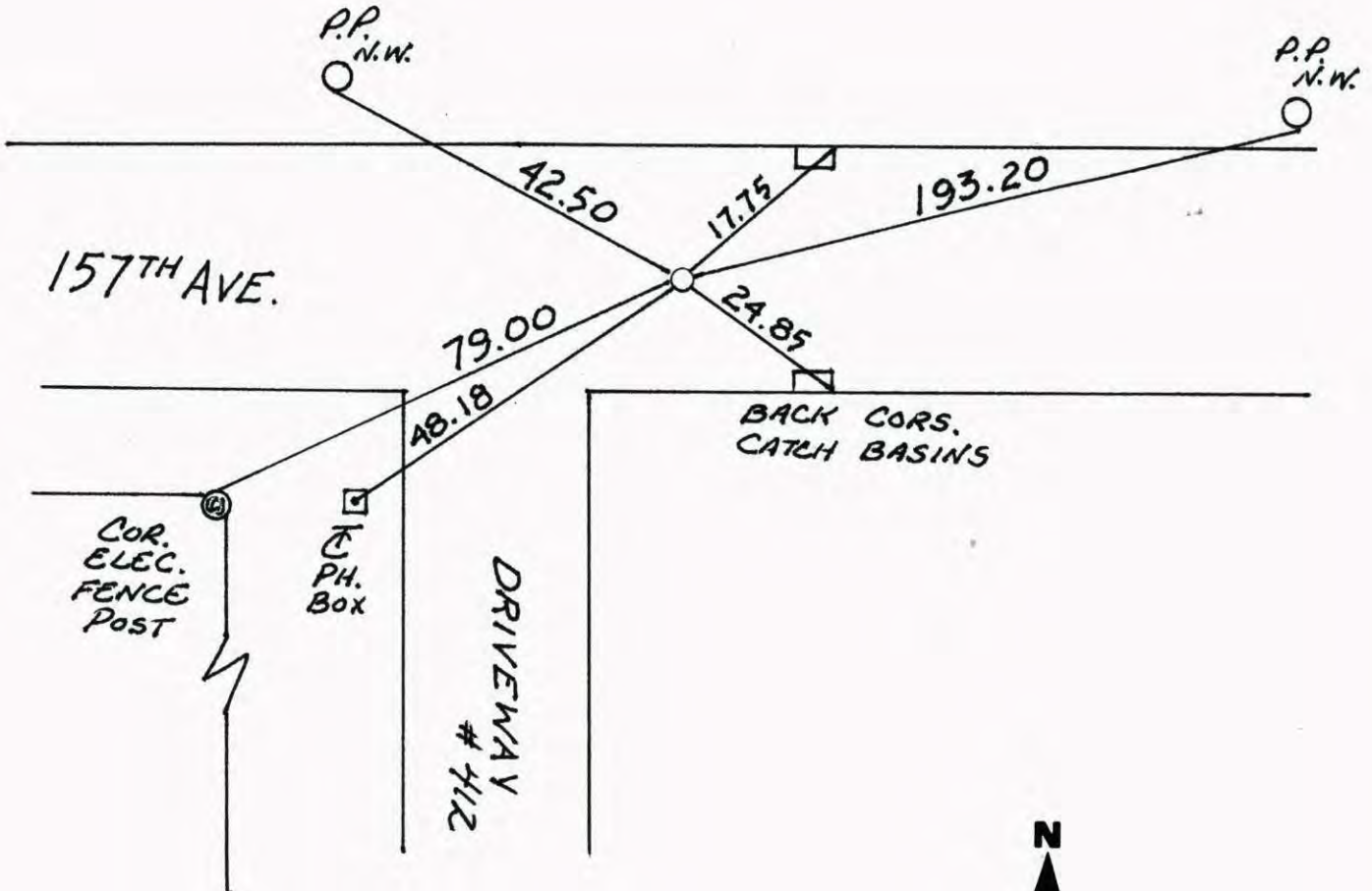
State of Minnesota

NORTH 1/4 Corner of Sec. 24 Township 32 Range 24

I hereby certify that on the 1ST day of JUNE, 1983, I found the described corner which was evidenced by AREA RESURVEY

and I further certify that to perpetuate the location of said corner, I did, at the exact location thereof, place a permanent marker consisting of CAST IRON MON.

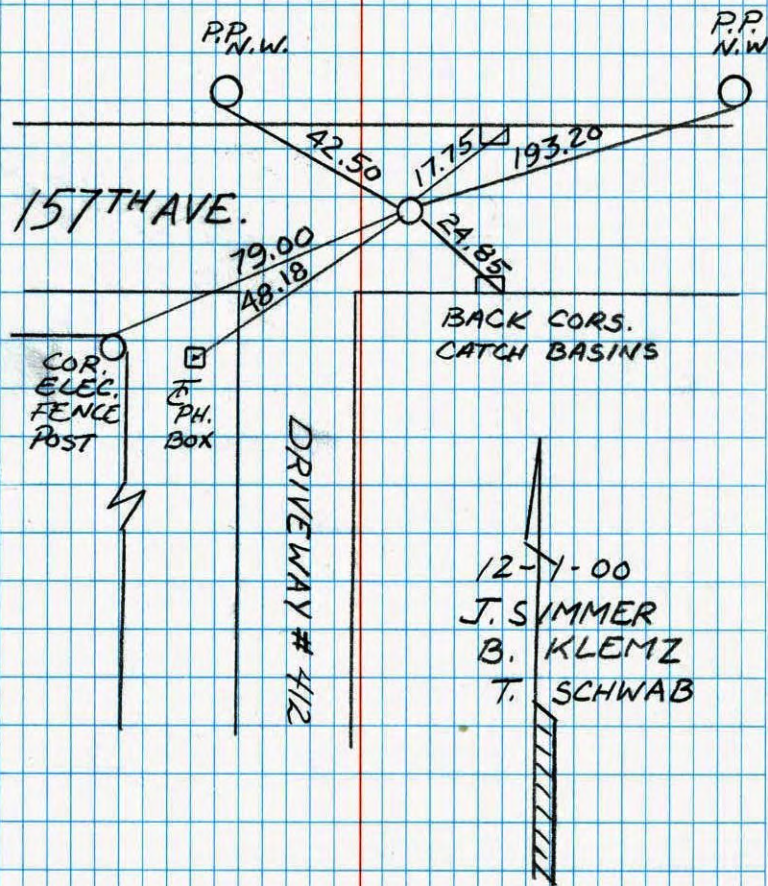
which reference or witness monuments are located in the manner following:



Revised date	Revised date	Revised date
8-2-88		
7-23-93		
12-1-00		



NORTH 1/4 SEC. 24 T32 R24
 RETIED, GPS CAST IRON
 MON.

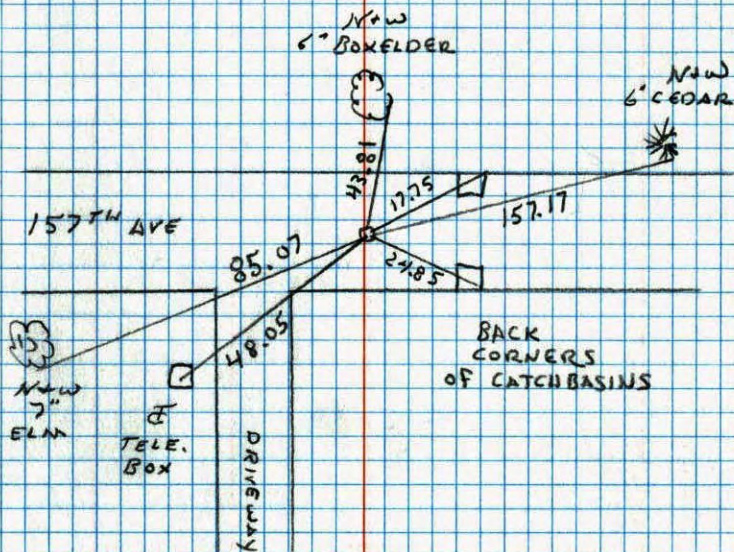


NO. 446

NATIONAL PRINTING

N 1/4 CORNER SECTION 24 T32 R24
 RETIED CAST IRON

7-23-93

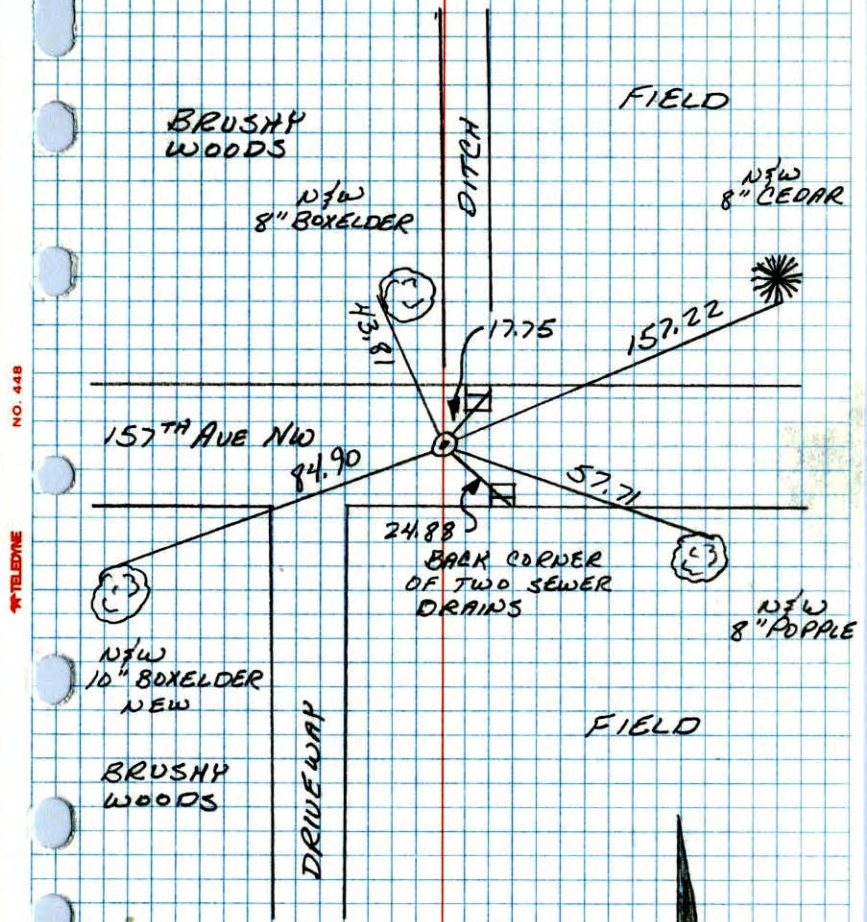
JA
JA

NO. 446

TELEPHONE

N¹/₄ CORNER SEC 24 T32 R24

RETIED CAST IRON MONUMENT



NO. 448
TELEPHONE

DRAWN
10-04-88

8-2-88
 B. GUETZKO
 J. STEVENSON
 A. SHROYER
 M. WELSH
 940 200' TAPE

CERTIFICATE OF LOCATION OF GOVERNMENT CORNER

County of Anoka

State of Minnesota

NORTH ONE QUARTER Corner of Sec. 24 Township 32 Range 24

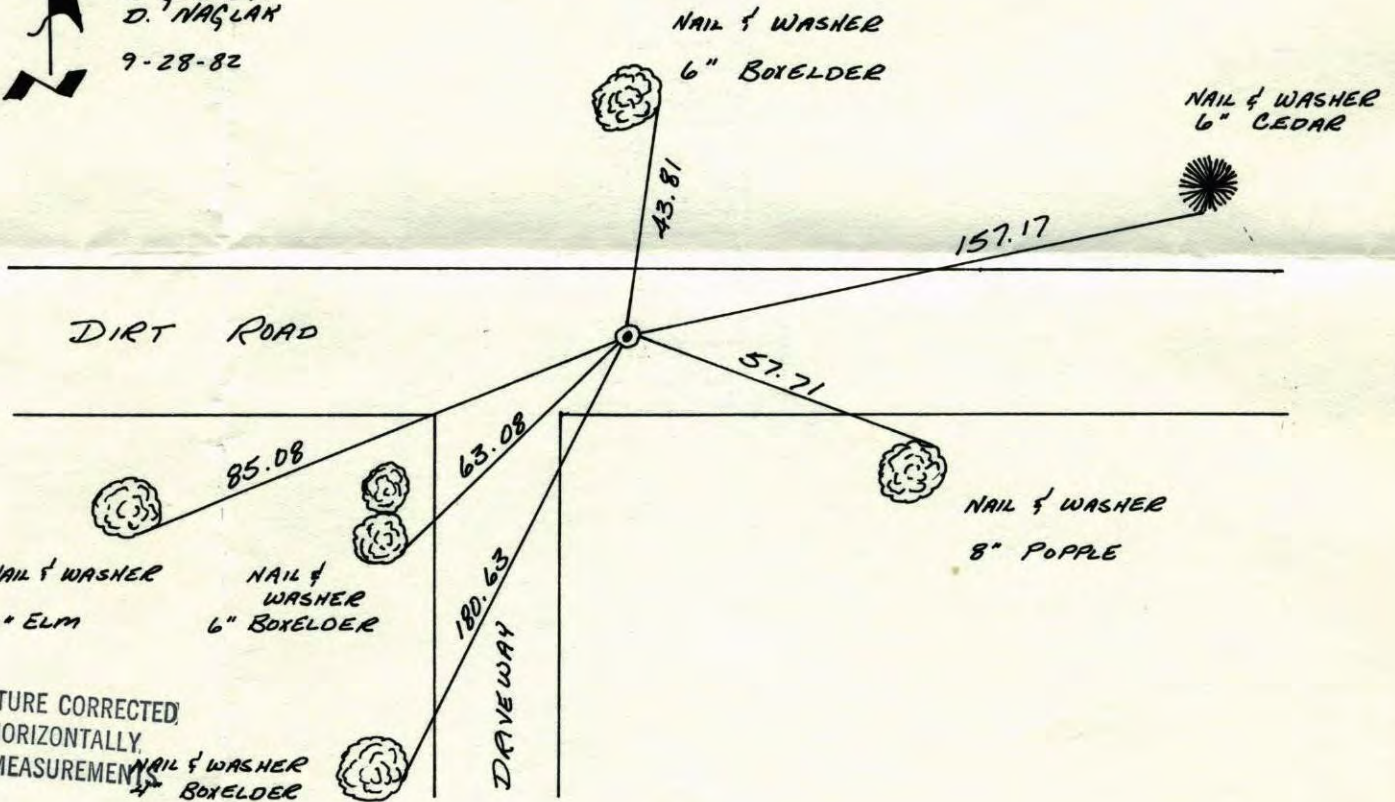
I hereby certify that on the 50th day of July, 1962, I found the described corner which was evidenced by resurvey of many sections

and I further certify that to perpetuate the location of said corner, I did, at the exact location thereof, place a permanent marker consisting of CAST IRON MONUMENT

which reference or witness monuments are located in the manner following:



H. LARSON
B. GUETCHO
D. NASLAN
9-28-82



TEMPERATURE CORRECTED
AND HORIZONTALLY
TAPED MEASUREMENTS

Revised date	By
6-27-72	B. Olson
6-2-76	D. Dahl
6-4-79	B. Stephens
6-24-82	P. Ross
6-3-85	D. Ross

Minnesota State Plane Coordinates
South Zone

Y _____ X _____

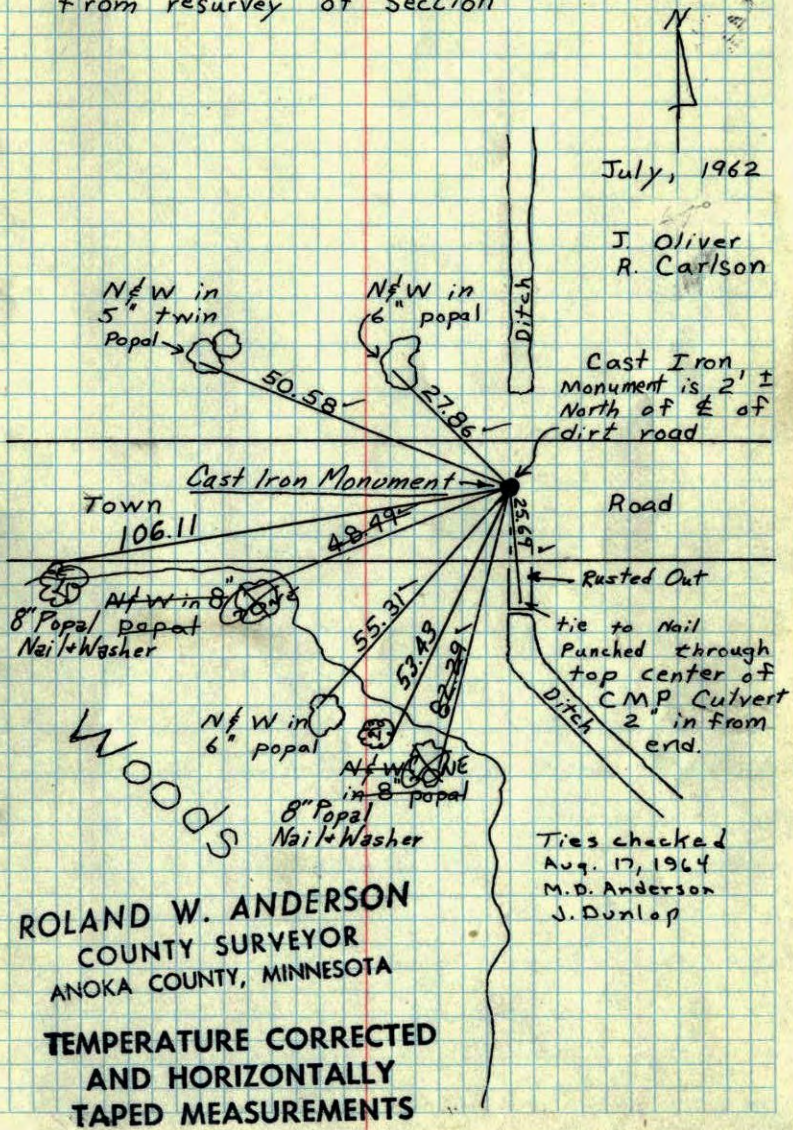
Roland W. Anderson, 5/16/84
County Surveyor Date

Registered Land Surveyor No. 5715

N 1/4 Cor Sec 24, T 32, R 24

Set Cast Iron Monument down 0.5'

from resurvey of Section



No 1/4 Cor Sec. 24, T 32, R 24

Set Cast Iron Monument down 0.5'

From Resurvey of Sec.

