

CERTIFICATE OF LOCATION OF GOVERNMENT CORNER

County of Anoka

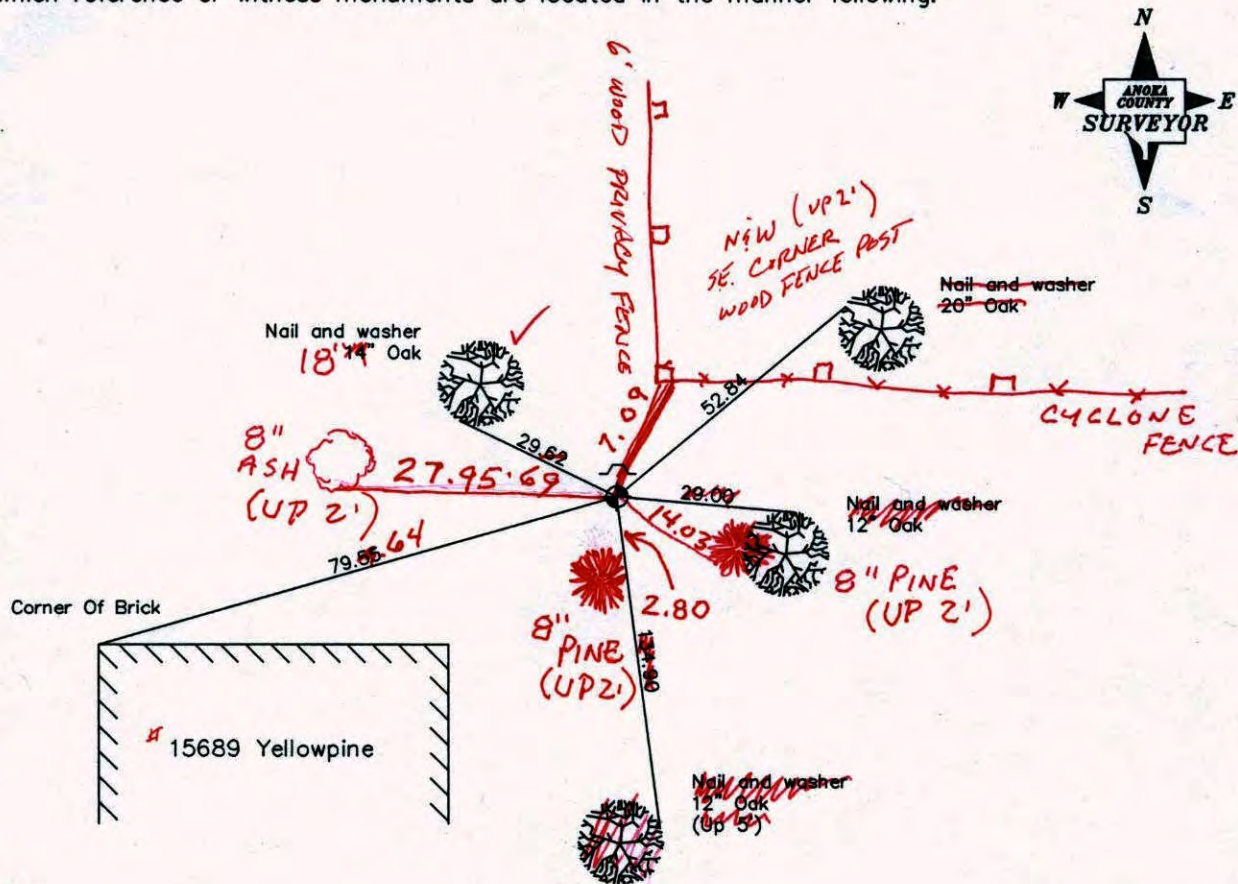
State of Minnesota

South 1/4 Corner of Sec. 14 Township 32 Range 24

I hereby certify that on the 27th day of February, 1963, I found the described corner which was evidenced by area resurvey

and I further certify that to perpetuate the location of said corner, I did, at the exact location thereof, place a permanent marker consisting of a cast iron monument with sign and post on the north side (DOWN 1.0')

which reference or witness monuments are located in the manner following:



2-7-11
BK-SS
TAPED

Revised date

8/18/88
7/17/93
6/16/00

N.A.D. 1983 Co-ordinates

County Project Co-ordinates
Northing <u>180186.8112</u>
Easting <u>492498.5911</u>

State Plane Co-ordinates
Y _____
X _____

Date 6/16/00

CERTIFICATE OF LOCATION OF GOVERNMENT CORNER

County of Anoka

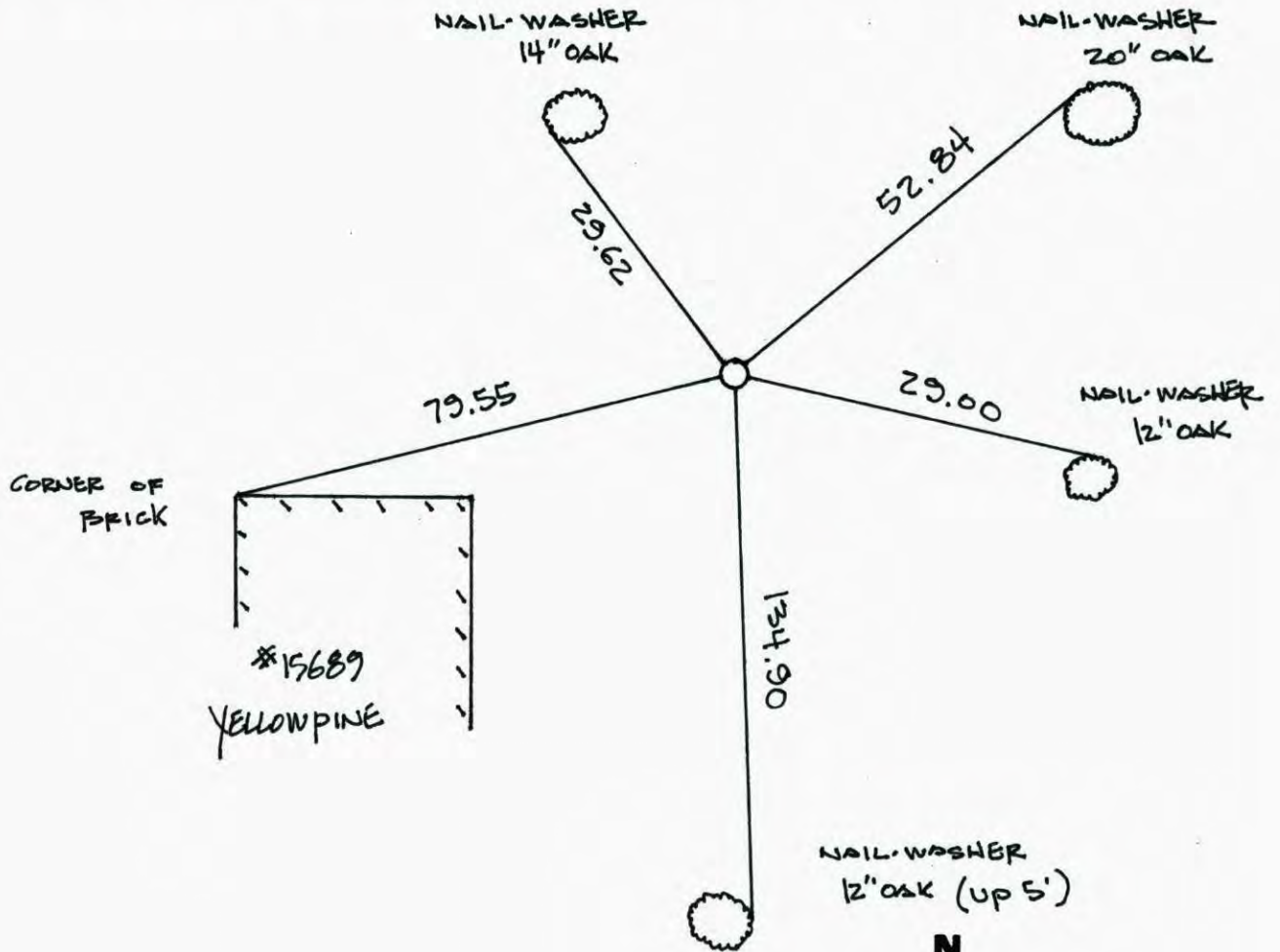
State of Minnesota

SOUTH $\frac{1}{4}$ Corner of Sec. 14 Township 32 Range 24

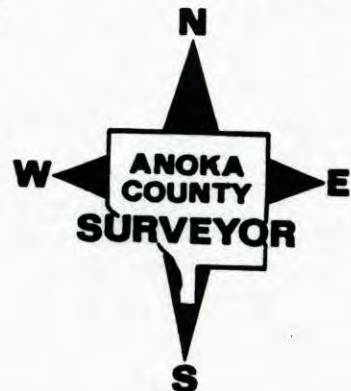
I hereby certify that on the 27TH day of FEBRUARY, 1963, I found the described corner which was evidenced by AREA RESURVEY

and I further certify that to perpetuate the location of said corner, I did, at the exact location thereof, place a permanent marker consisting of CAST IRON MONUMENT SIGN AND POST ON NORTH SIDE

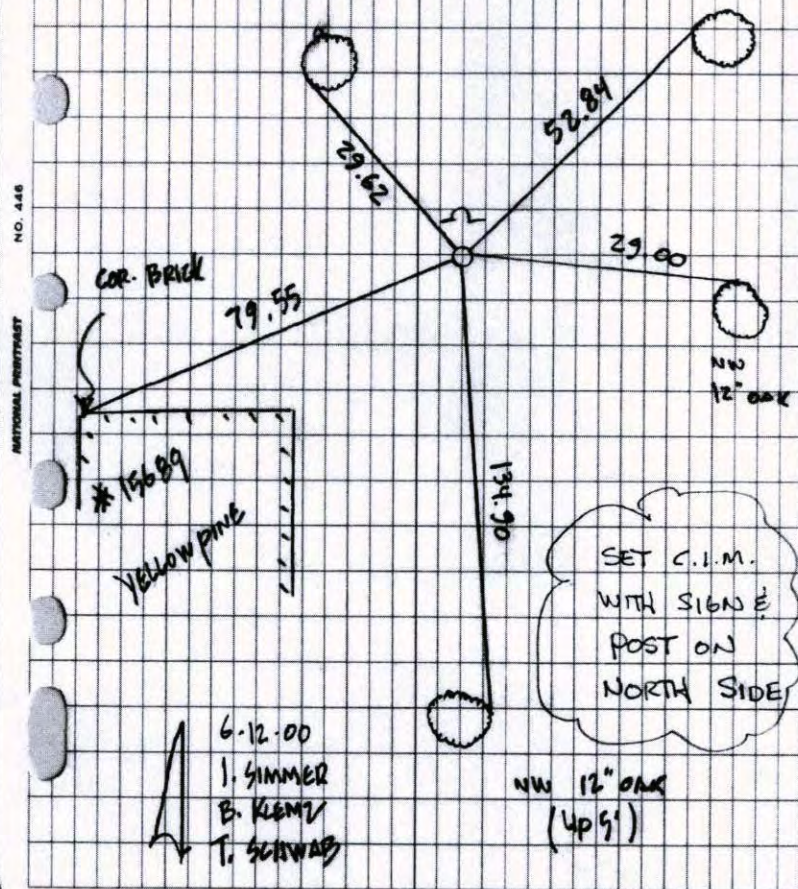
which reference or witness monuments are located in the manner following:



Revised date	Revised date	Revised date
8-18-88		
7-27-93		
6-16-00		



SOUTH 1/4 COR SEC 14 T 32 R 24

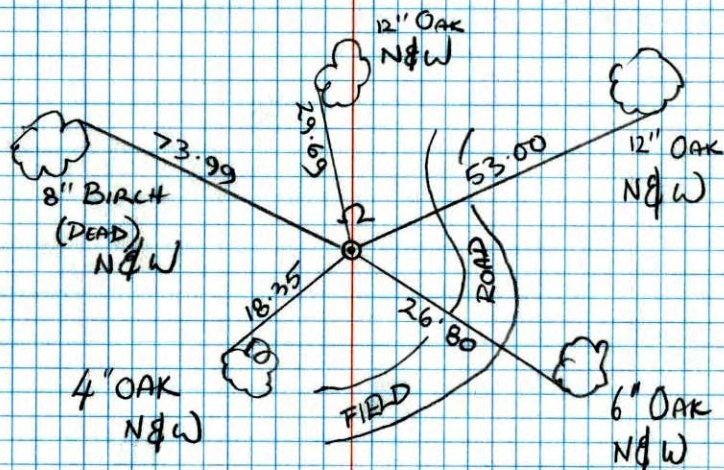
TIED OUT 1/2" I.P. PIONEER SET
IN PLACE WITH G.P.S., RAN TRAV.
TO CHECK POSITION.(6-16-00, REPLACED CAST IRON MON) NW
NW. 14" OAK 20" OAK

OVER ↓

CHECKED AGAINST
I - 121 TO FIND
I.P. PIONEER SET
WAS A GOOD POSITION

CHECKED C.I.'S NW 23,
NE 23, E 1/4 23, SE 23,
S 1/4 23, W 1/4 26, SW 23,
W 1/4 23,

SOUTH 1/4 SEC 14 T32 R24

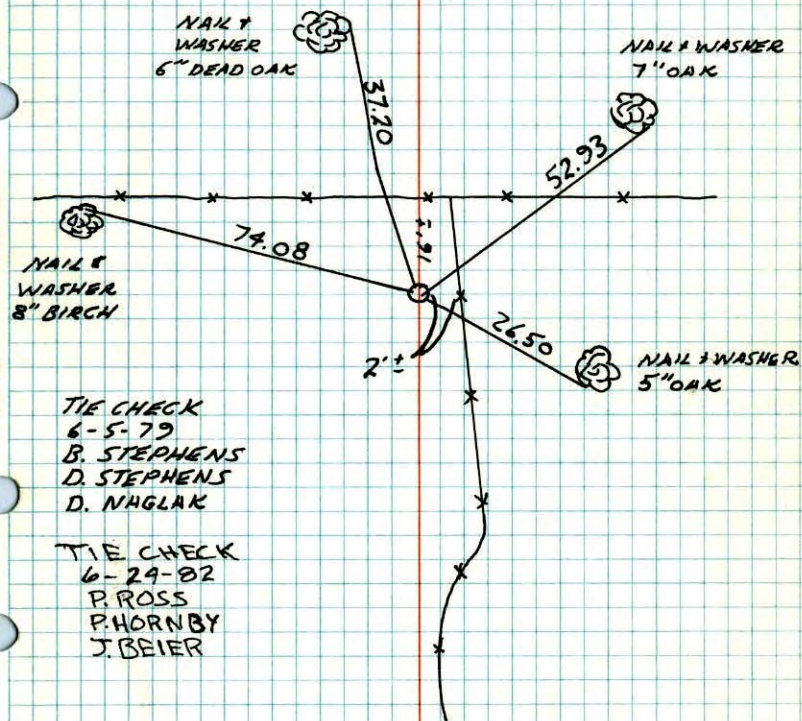
RETIE CAST IRON MONUMENT
W/ SIGN & POST ON NTH SIDE

7-27-93

JAMIE ANDERSON.

JOSH ANDERSON.

S 1/4 CORNER SECTION 14 T32 R24

SET CAST IRON MONUMENT FROM AREA
RESURVEY.FEB. 27, 1963
J. OLIVER
M. ANDERSON

TIE CHECK
6-5-79
B. STEPHENS
D. STEPHENS
D. NAGLAK

TIE CHECK
6-29-82
P. ROSS
P. HORNBY
J. BEIER

TEMPERATURE CORRECTED
AND HORIZONTALLY
TAPED MEASUREMENTS

ROLAND W. ANDERSON
COUNTY SURVEYOR
ANOKA COUNTY, MINNESOTA

REDRAWN 16 JAN 79 RMC SEE NEWS TIE BOOK 60
 So. 1/4 Cor. Sec. 14, T 32, R 24

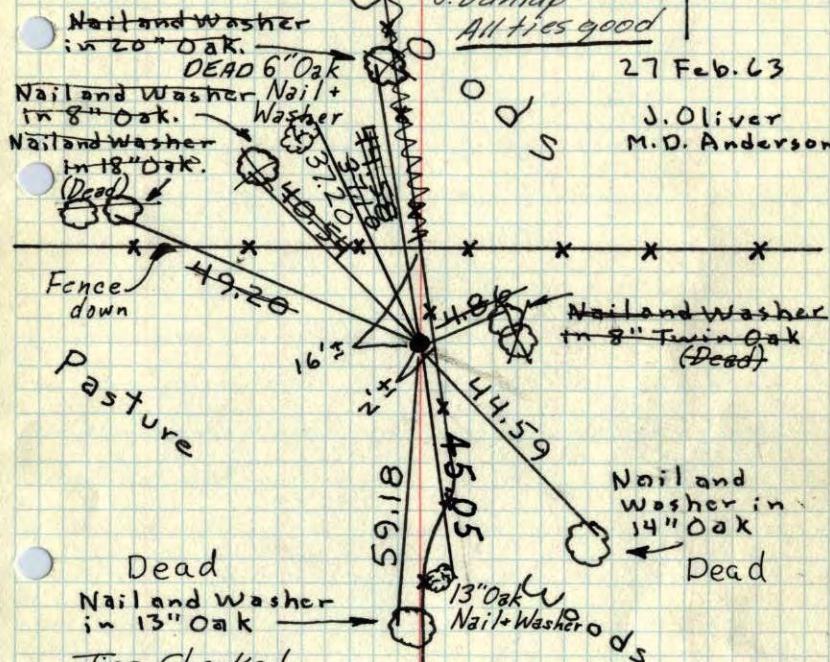
Set Bridge Spike From Resurvey.

Cast Iron Monument in place. Up 0.2' ±

tie check
 Aug. 19, 1964
 M. D. Anderson
 J. Dunlap
 All ties good

27 Feb. 63

J. Oliver
 M. D. Anderson



Ties Checked
 June 30, 1972
 B. Olson
 R. Bauer
 D. Brien

ROLAND W. ANDERSON
 COUNTY SURVEYOR
 ANOKA COUNTY, MINNESOTA

Tie Check
 July 24, 1968
 D. Powell
 P. Pich

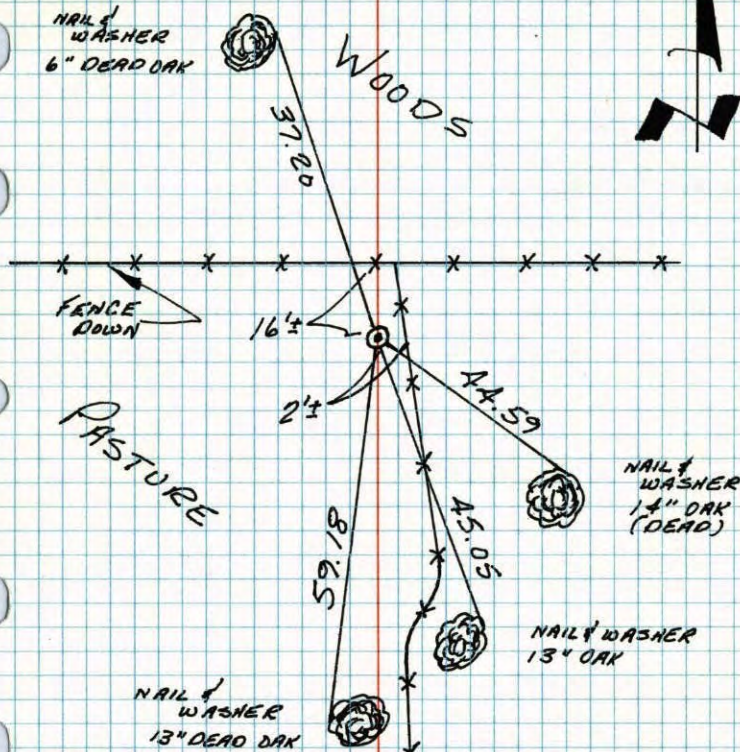
TIE CHECK
 6-2-76
 O. DAHL
 B. SANNEBUD
 G. ADAMS

TEMPERATURE CORRECTED
 AND HORIZONTALLY
 TAPED MEASUREMENTS

S 1/4 CORNER SECTION 14-T32-R24

SET CAST IRON MONUMENT FROM AREA RESURVEY.
 CAST IRON UP 0.2' ±

27 FEB 63
 J. OLIVER
 M. D. ANDERSON



NO. 448
 TELEPHONE

TIE CHECK
 2 JUN 76
 D. DAHL
 B. SANNEBUD
 G. ADAMS

NEW TIE
 BOOK

TEMPERATURE CORRECTED
 AND HORIZONTALLY
 TAPED MEASUREMENTS

ROLAND W. ANDERSON
 COUNTY SURVEYOR
 ANOKA COUNTY, MINNESOTA

So. 1/4 Cor. Sec. 14, T32, R24

Set Bridge Spk. from Resurvey

