

CERTIFICATE OF LOCATION OF GOVERNMENT CORNER

County of Anoka

State of Minnesota

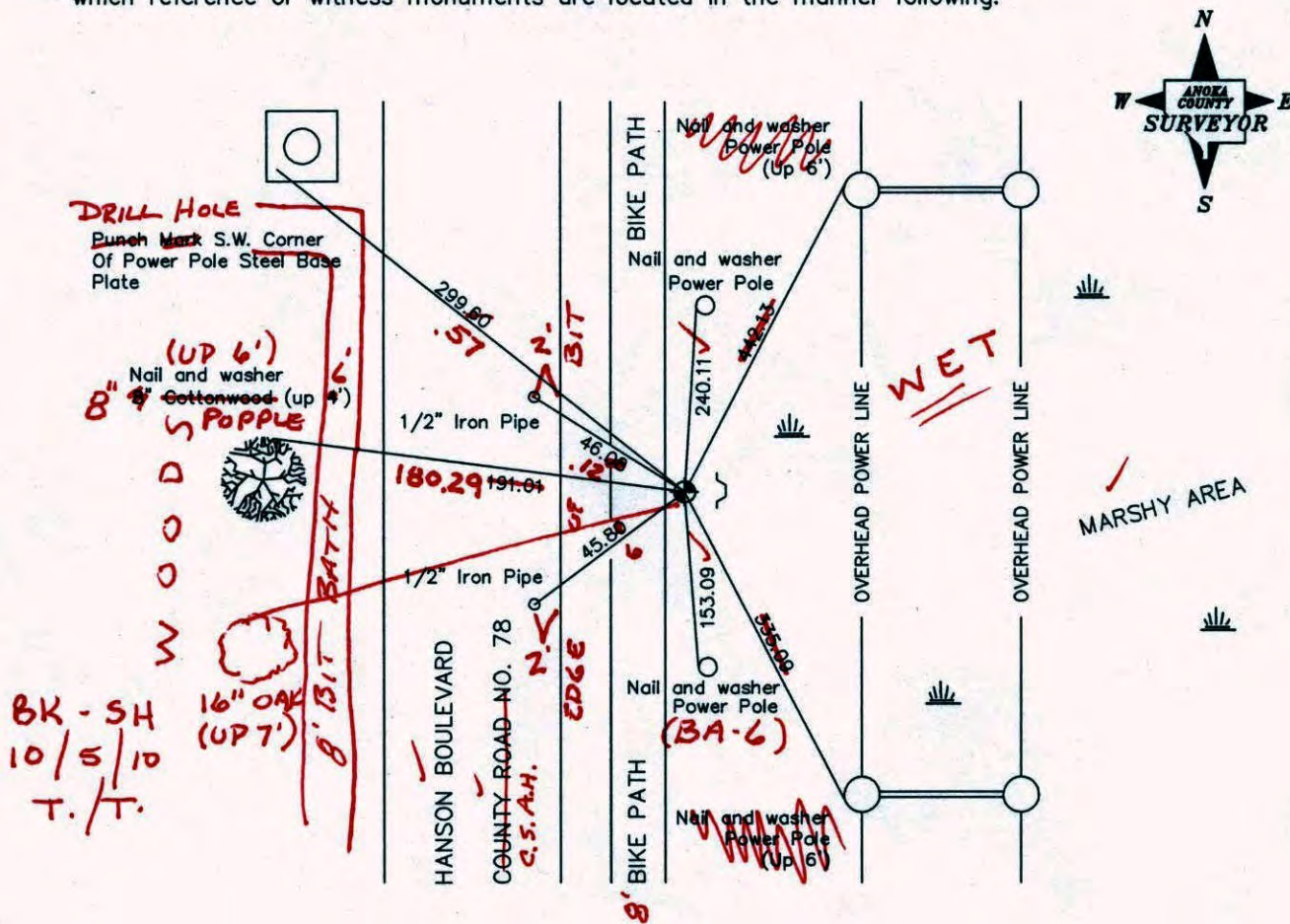
Southwest Corner of Sec. 14 Township 32 Range 24

I hereby certify that on the 27th day of February, 1963, I found the described corner which was evidenced by area resurvey

and I further certify that to perpetuate the location of said corner, I did, at the exact location thereof, place a permanent marker consisting of a cast iron monument with sign and post on the east side (MON IS 5' EAST OF EDGE OF BIKE PATH)

(DOWN 0.8')

which reference or witness monuments are located in the manner following:



Revised date

8/1/88
7/19/93
8/8/00
9/12/05

N.A.D. 1983 Co-ordinates

County Project Co-ordinates	State Plane Co-ordinates
Northing 180266.0548	Y _____
Easting 489862.6897	X _____

Date 8/8/00

CERTIFICATE OF LOCATION OF GOVERNMENT CORNER

County of Anoka

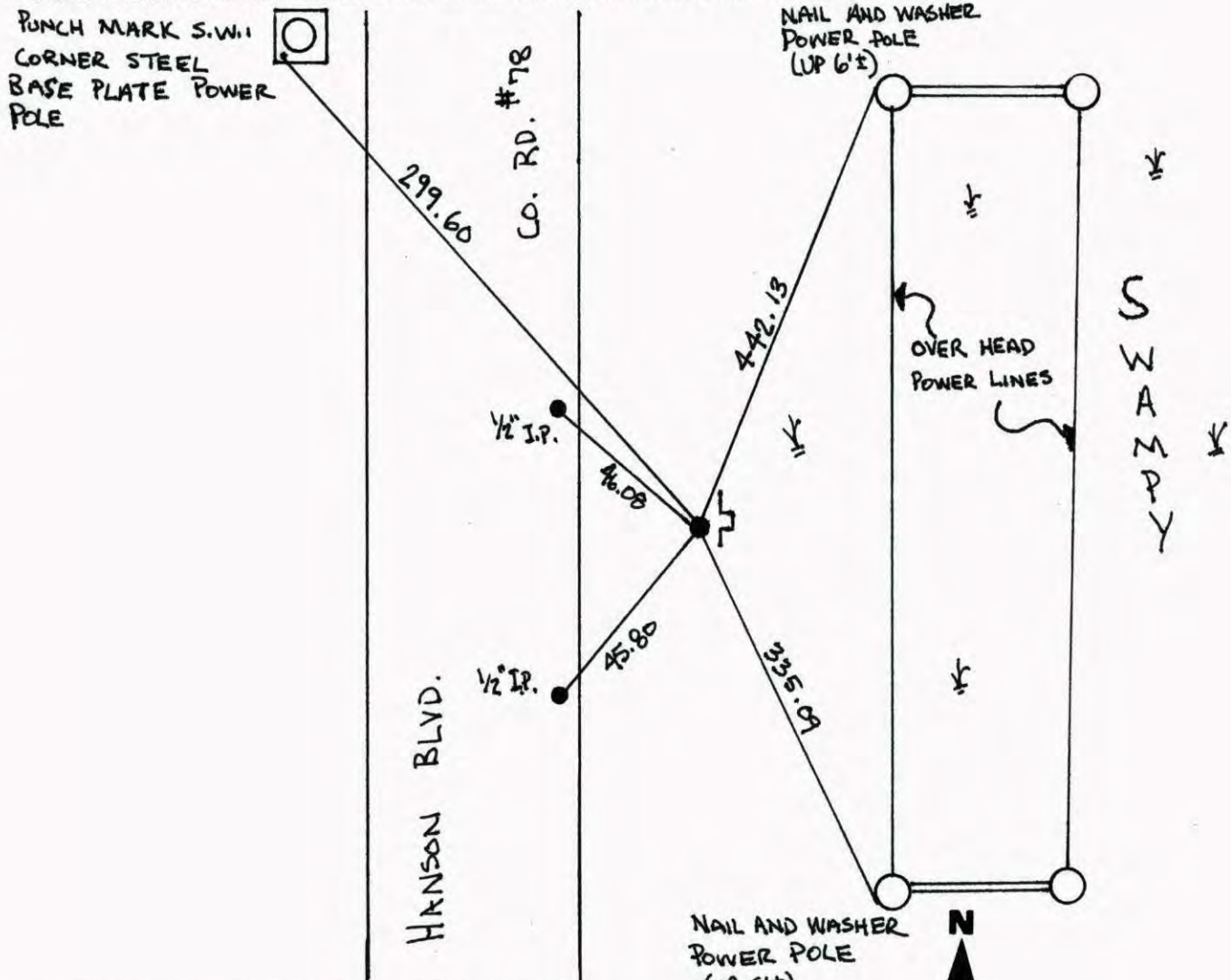
State of Minnesota

SOUTHWEST Corner of Sec. 14 Township 32 Range 24

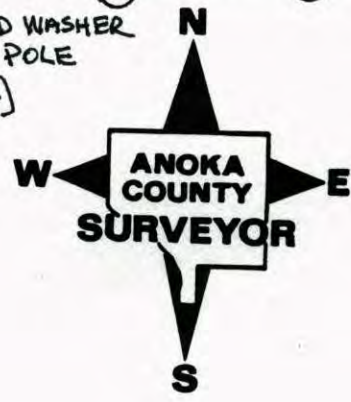
I hereby certify that on the 27TH day of FEBRUARY, 19 63, I found the described corner which was evidenced by AREA RESURVEY

and I further certify that to perpetuate the location of said corner, I did, at the exact location thereof, place a permanent marker consisting of CAST IRON MONUMENT SIGN AND POST ON EAST SIDE

which reference or witness monuments are located in the manner following:

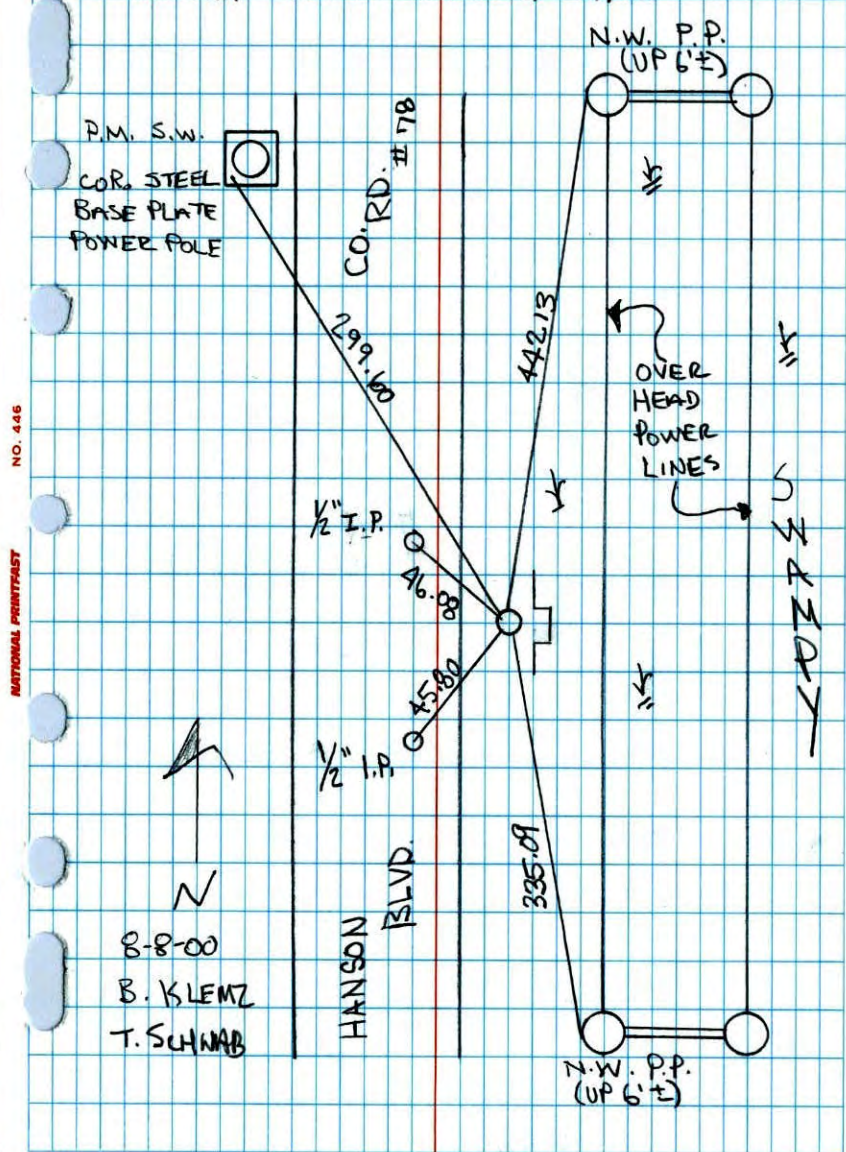


Revised date	Revised date	Revised date
8-19-64	7-19-93	
7-24-68	8-8-80	
1-24-74		
1-19-78		
8-3-84		
5-30-85		
8-1-88		



SOUTHWEST COR. 14, T. 32, R. 24

RETIED C.I.M. DURING GPS.

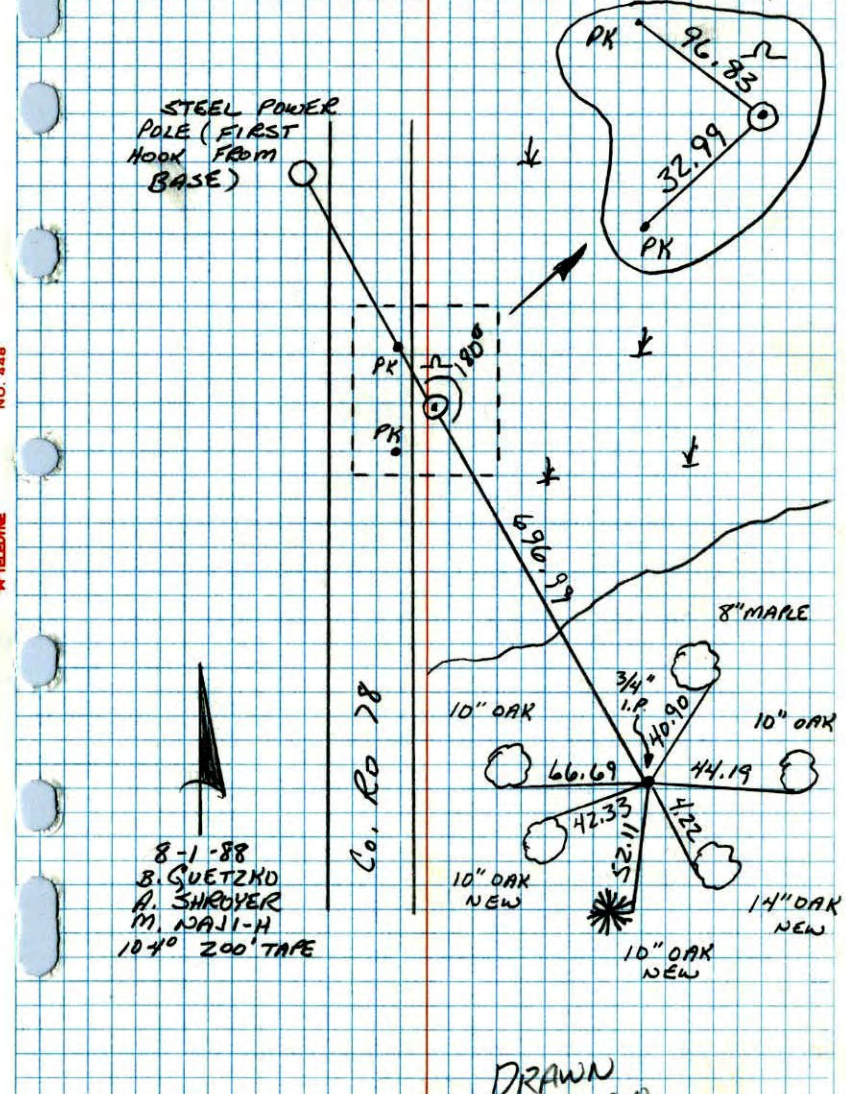


NO. 446 NATIONAL PRINTFAST

8-8-00
B. KLEMTZ
T. SCHWAB

S.W. CORNER SEC 14 T32 R24

RETIED CAST IRON MONUMENT AND
3/4" IRON PIPE USED AS TRANSIT TIE.



NO. 448 TELETYPE

8-1-88
B. GUETZKO
A. SHROYER
M. WALI-H
104° 200' TAPE

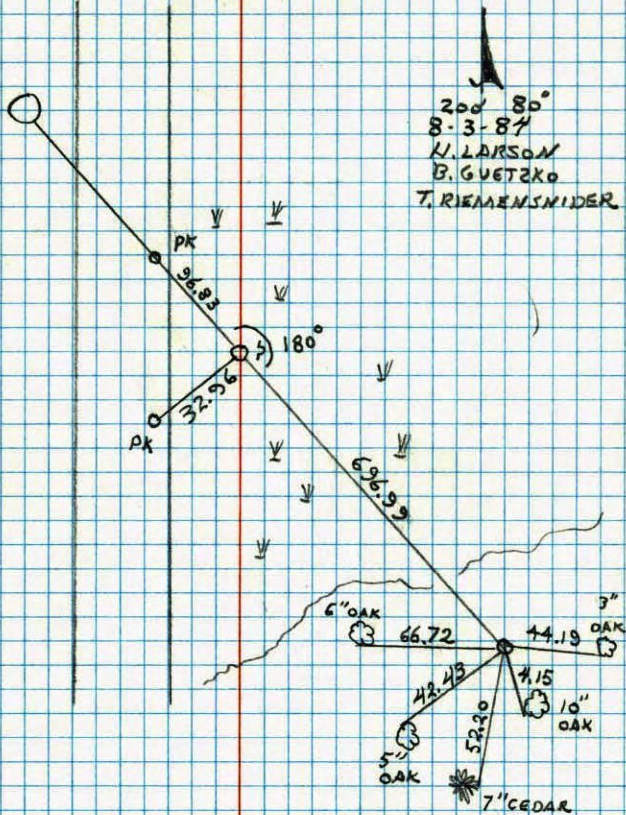
DRAWN
10-4-88

SW CORNER SECTION 14 T32 R24

CAST IRON MONUMENT SET BACK
AFTER ROAD CONSTRUCTION C.I. FLUSH
WITH SIGN AND POST ON EAST SIDE

STEEL
PP
FIRST
HOOK
FROM
BASE

2nd 80°
8-3-84
H. LARSON
B. GUETZKO
T. RIEMENSCHIDER



NO. 448

TELEPHONE

RESET C.I.

8-7-84

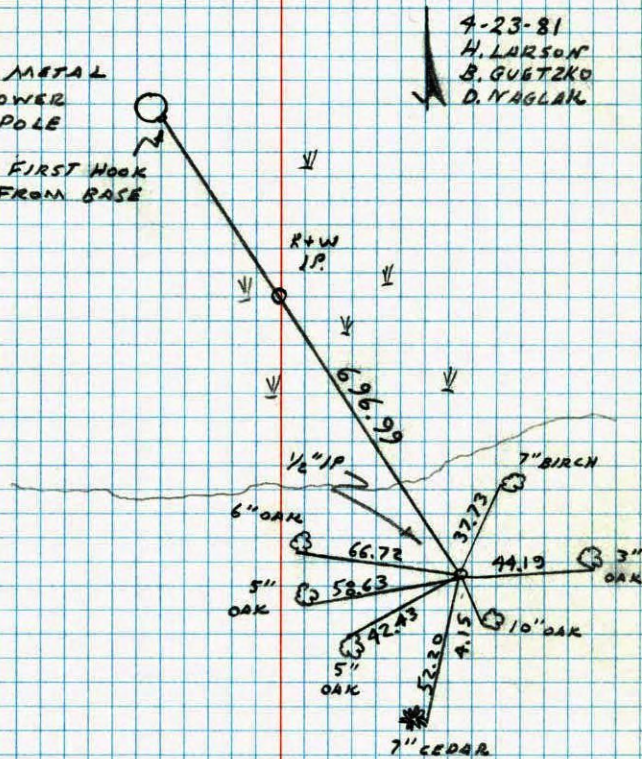
SW COR. SECTION 14 T32 R24

TRANSIT TIES FOR RED AND WHITE
IRON PIPE. SET 1/2" IP ON LINE TO
POWER POLE.

METAL
POWER
POLE

FIRST HOOK
FROM BASE

9-23-81
H. LARSON
B. GUETZKO
D. NYAGLAK

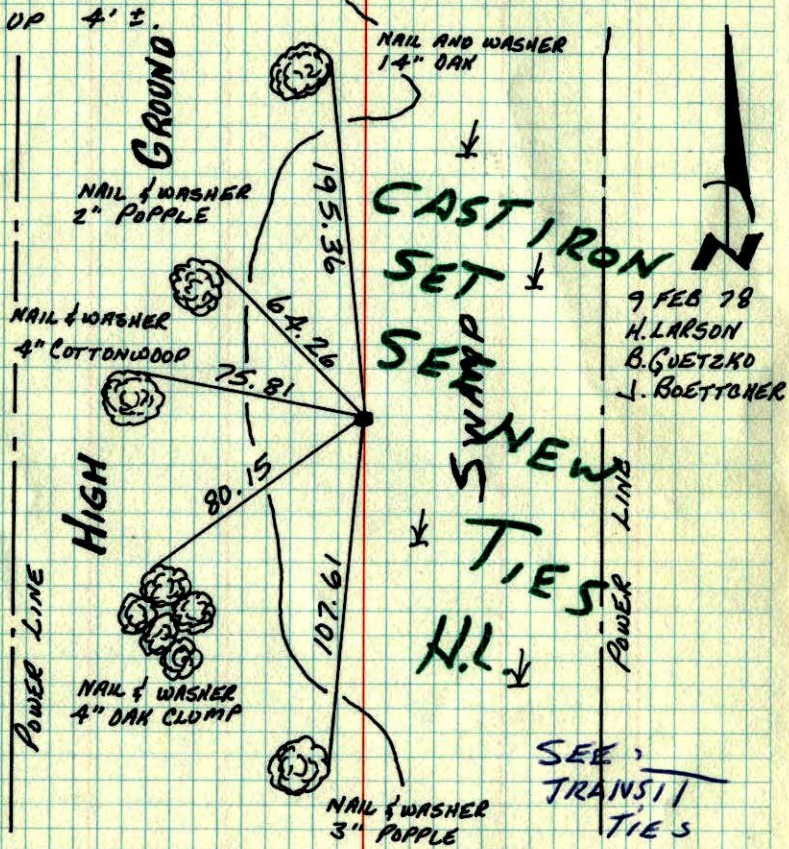


NO. 448

TELEPHONE

S. W. COR. SEC. 14 - T32 - R24

RETIRED RED AND WHITE IRON PIPE SET BY JOHN OLIVER IN 1963. OLD TIES REMOVED BY POWER LINE CONSTRUCTION. 1" IRON PIPE UP 4' ±.

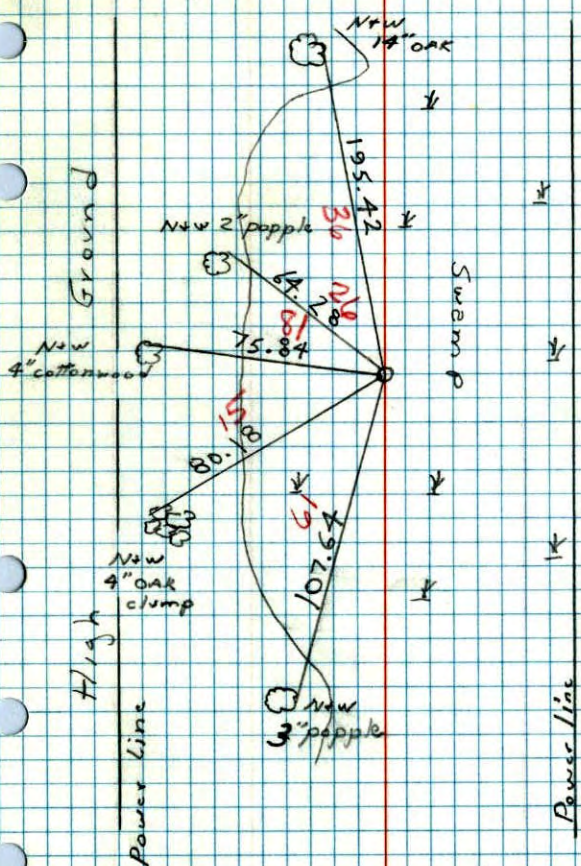


9 FEB 78
H. LARSON
B. GUETZKO
J. BOETTNER

TEMPERATURE CORRECTED AND HORIZONTALLY TAPED MEASUREMENTS
ROLAND W. ANDERSON
COUNTY SURVEYOR
ANOKA COUNTY, MINNESOTA

SW Cor. Section 14 T32 R24

Retired R+W iron pipe set by J. Oliver in 1963 old ties removed by Power line construction 1" I.P. up 4' ±



45 15°
2-9-78
H. Larson
B. Guetzko
J. Boettcher

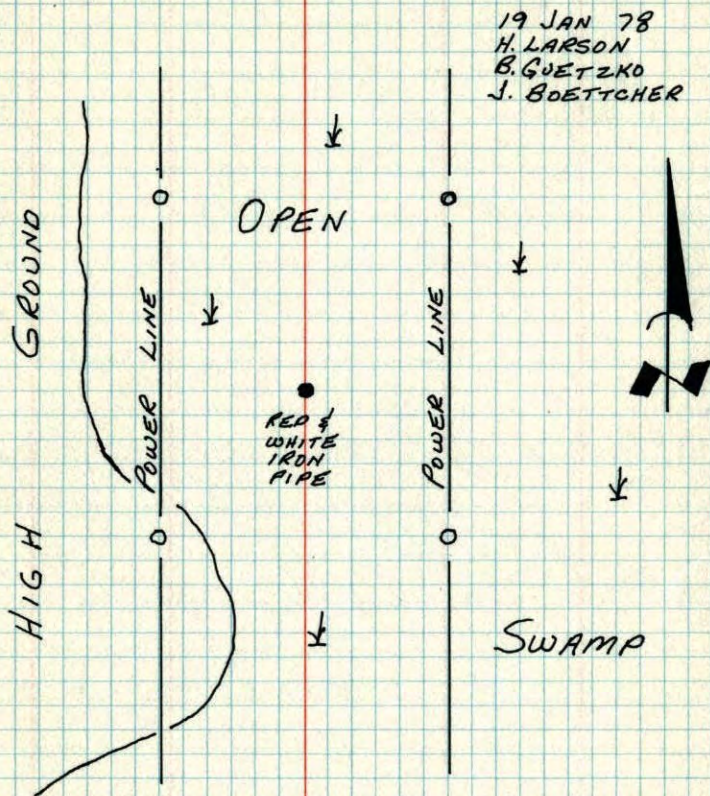


S.W. COR. SEC. 14 - T32 - R24

FOUND 1" x 9' RED AND WHITE IRON PIPE, SET BY

JOHN OLIVER IN 1963, O.K. TIES REMOVED BY

POWER LINE CONSTRUCTION. IRON PIPE UP 3'±.



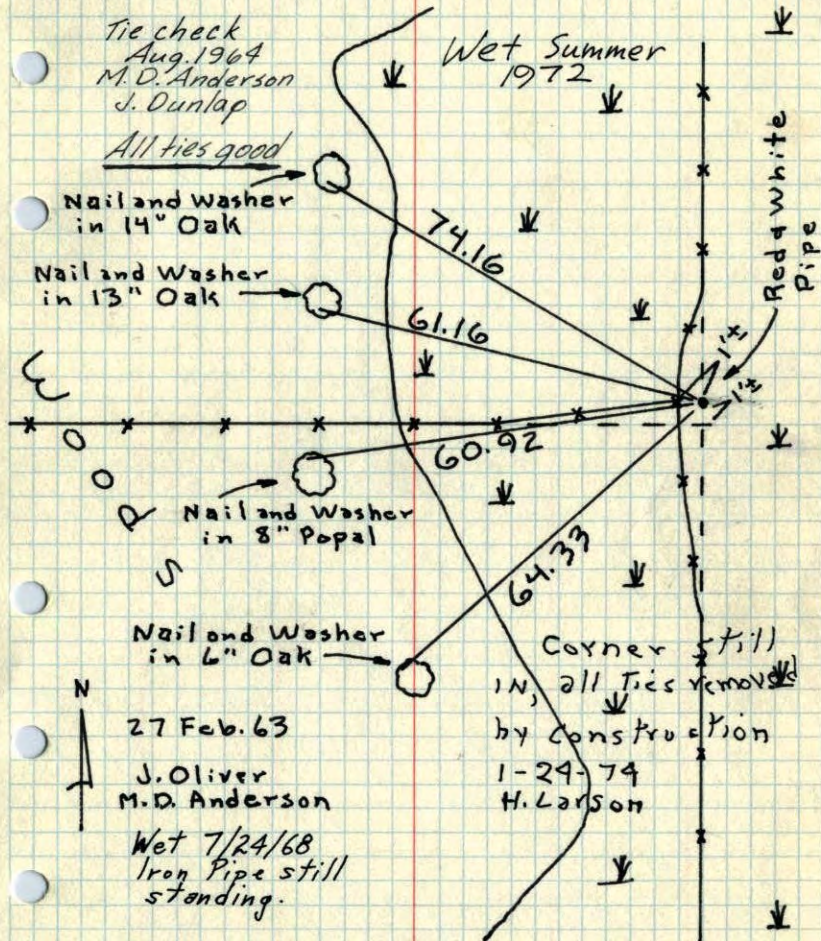
TEMPERATURE CORRECTED
AND HORIZONTALLY
TAPED MEASUREMENTS

ROLAND W. ANDERSON
COUNTY SURVEYOR
ANOKA COUNTY, MINNESOTA

SW Cor. Sec. 14, T32, R24

Set 1" x 9' I.P. in Swamp from Resurvey.

Top 4' sticking up and painted with
alternate 6" Red and White Bands.



ROLAND W. ANDERSON
COUNTY SURVEYOR
ANOKA COUNTY, MINNESOTA

TEMPERATURE CORRECTED
AND HORIZONTALLY
TAPED MEASUREMENTS

SW Cor. Sec. 14, T32, R24

Set 1" x 9' I.P. in Swamp from Resurvey

Top 4' sticking up and painted with
alternate 6" Red & White Bands.

