

CERTIFICATE OF LOCATION OF GOVERNMENT CORNER

County of Anoka

State of Minnesota

North 1/4 Corner of Sec. 22 Township 32 Range 24

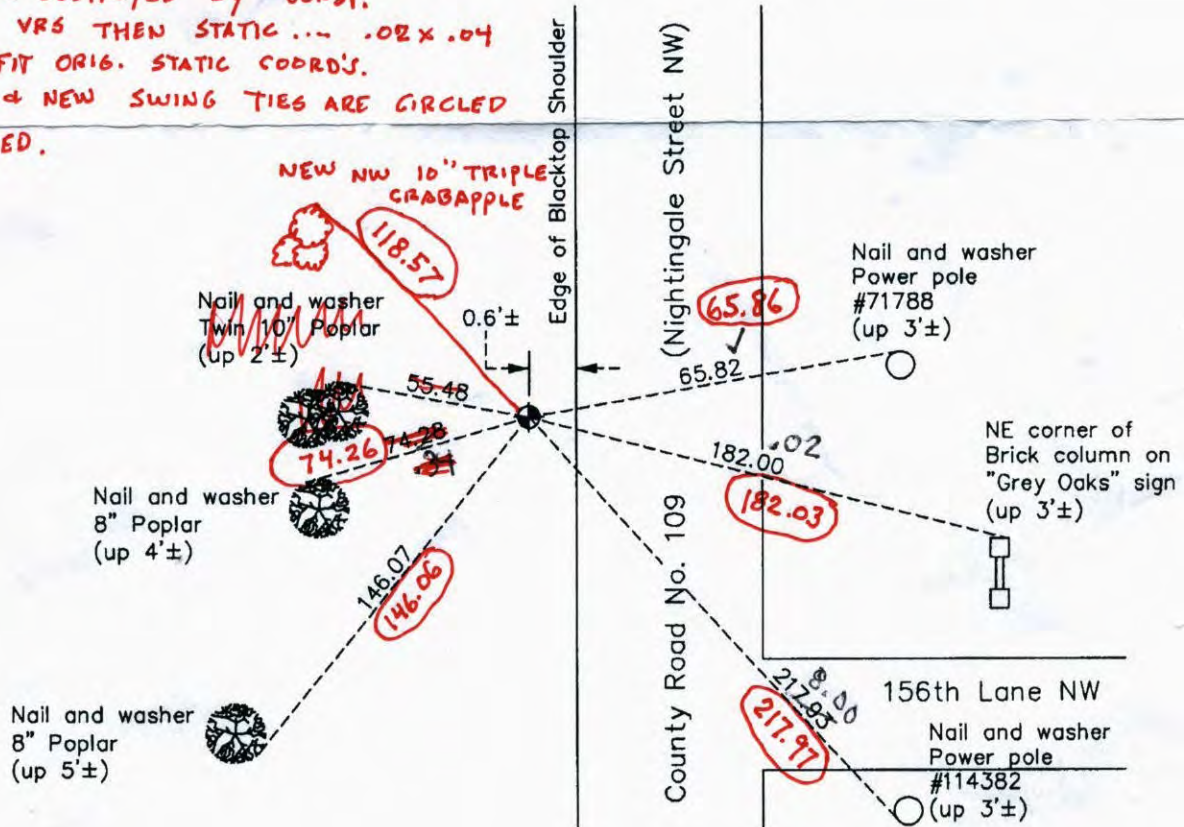
On the 9th day of August, 1960, the described corner was evidenced by an iron pipe

and to perpetuate the location of said corner, at the exact location thereof, a permanent marker was placed consisting of a cast iron monument

AND on the 6th day of December, 2010, said permanent marker was found down 0.3'± and the ties were updated

JS SH. Updated reference ties are as shown below.

9-11-13 MON. DESTROYED BY CONST.
SET PK VIA VRS THEN STATIC02 X .04
ADJUSTED TO FIT ORIG. STATIC COORD'S.
SET C.I.M. & NEW SWING TIES ARE CIRCLED
DIST'S IN RED.



N.A.D. 1983 Coordinates
(1996 Adjustment)

County Project Coordinates	
Northing	180322.7694
Easting	487227.8667
Date	7/31/00

Revision Date
5/02/11

C.I.M. VRS COORD'S
3D = 0.05
N: 180322.7745
E: 487227.8299

I hereby certify that this United States public land survey monument record is correct and complete to the best of my knowledge and belief.

Larry D. Hoium Date 5/02/11

Larry D. Hoium, Anoka County Surveyor
 Minnesota License Number 18165

Point Id	Point Class	Date/Time	Northing	Easting	Ellip. Hgt.	Ortho. Hgt.	Geoid Sep.
<input checked="" type="checkbox"/> highway	Control	09/04/2013 09:18:14	166323.7776	491096.2544	-119.0334	897.2833	-1016.3166
<input checked="" type="checkbox"/> DAVID	Control	09/04/2013 09:42:19	168872.2948	527367.2959	-118.8940	896.5278	-1015.4217
<input checked="" type="checkbox"/> AND62PK	Averaged	09/04/2013 10:55:09	180322.7909	487227.9062	-123.1124	893.8484	-1016.9608

CERTIFICATE OF LOCATION OF GOVERNMENT CORNER

County of Anoka

State of Minnesota

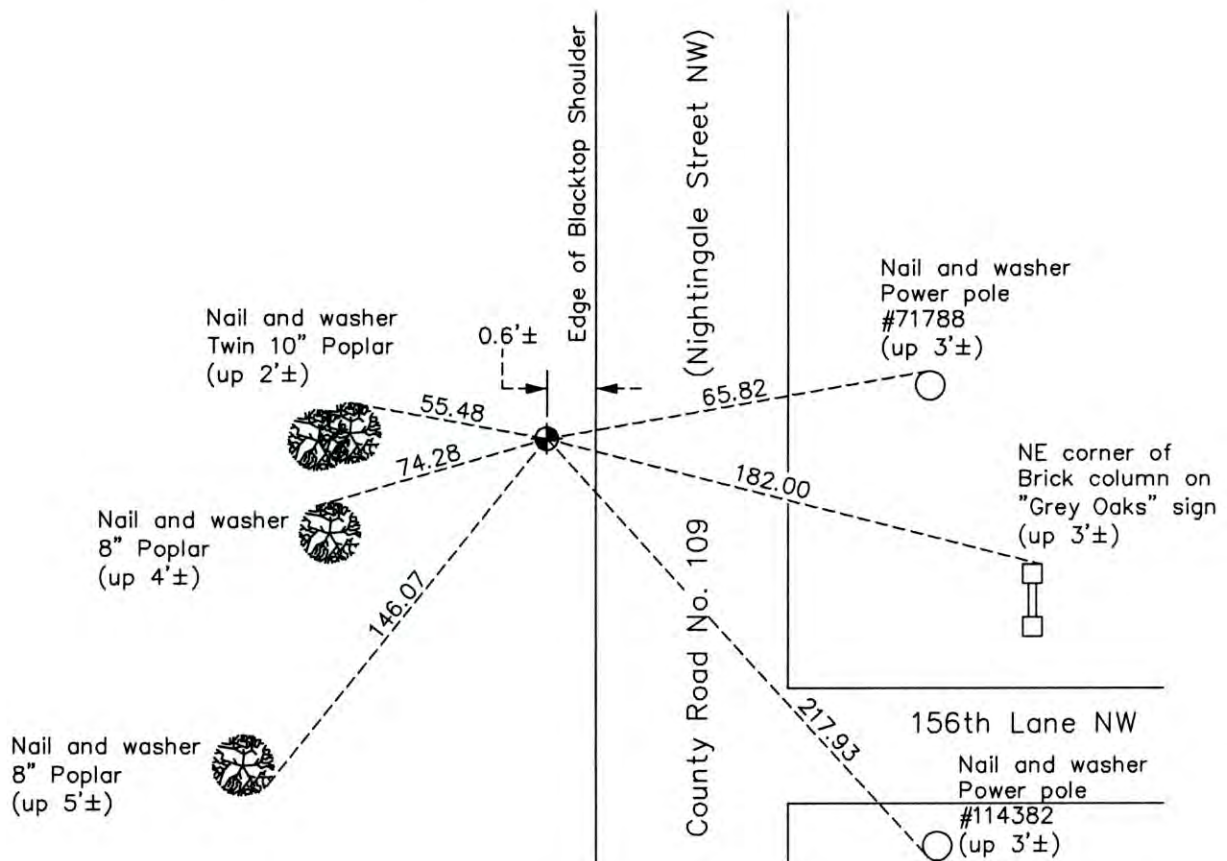
North 1/4 Corner of Sec. 22 Township 32 Range 24

On the 9th day of August, 1960, the described corner was evidenced by an iron pipe

and to perpetuate the location of said corner, at the exact location thereof, a permanent marker was placed consisting of a cast iron monument

AND on the 6th day of December, 2010, said permanent marker was found down 0.3'± and the ties were updated

Updated reference ties are as shown below.



Revision Date

5/02/11

N.A.D. 1983 Coordinates
(1996 Adjustment)

County Project Coordinates	
Northing	180322.7694
Easting	487227.8667
Date	7/31/00

I hereby certify that this United States public land survey monument record is correct and complete to the best of my knowledge and belief.

Date 5/02/11
 Larry D. Hoium, Anoka County Surveyor
 Minnesota License Number 18165

HISTORY OF GOVERNMENT CORNER

County of Anoka

State of Minnesota

North 1/4 Corner of Sec. 22 Township 32 Range 24

CORNER HISTORY:

August 9, 1960 - Found iron pipe down 0.2' and mushroomed on top. Established ties to monument.

August 19, 1964 - Replaced iron pipe with a cast iron monument set down 0.4'±. Updated ties.

July 15, 1968 - Found cast iron monument and updated ties.

June 23, 1972 - Found cast iron monument and updated ties.

June 2, 1976 - Replaced 3/4" iron pipe, set prior to road construction, with a cast iron monument set down 0.1'± after road construction and updated ties.

June 5, 1979 - Found cast iron monument and updated ties.

June 25, 1982 - Found cast iron monument and updated ties.

June 6, 1985 - Found cast iron monument and updated ties.

August 11, 1988 - Found cast iron monument and updated ties.

August 8, 1989 - Found cast iron monument and updated ties.

July 21, 1993 - Found cast iron monument and updated ties.

July 31, 2000 - Found cast iron monument and established NAD 1983 (1996 Adjustment) Anoka County Project Coordinates by Static GPS methods. Updated ties.

December 6, 2010 - Found cast iron monument down 0.3'± and updated ties.

CERTIFICATE OF LOCATION OF GOVERNMENT CORNER

County of Anoka

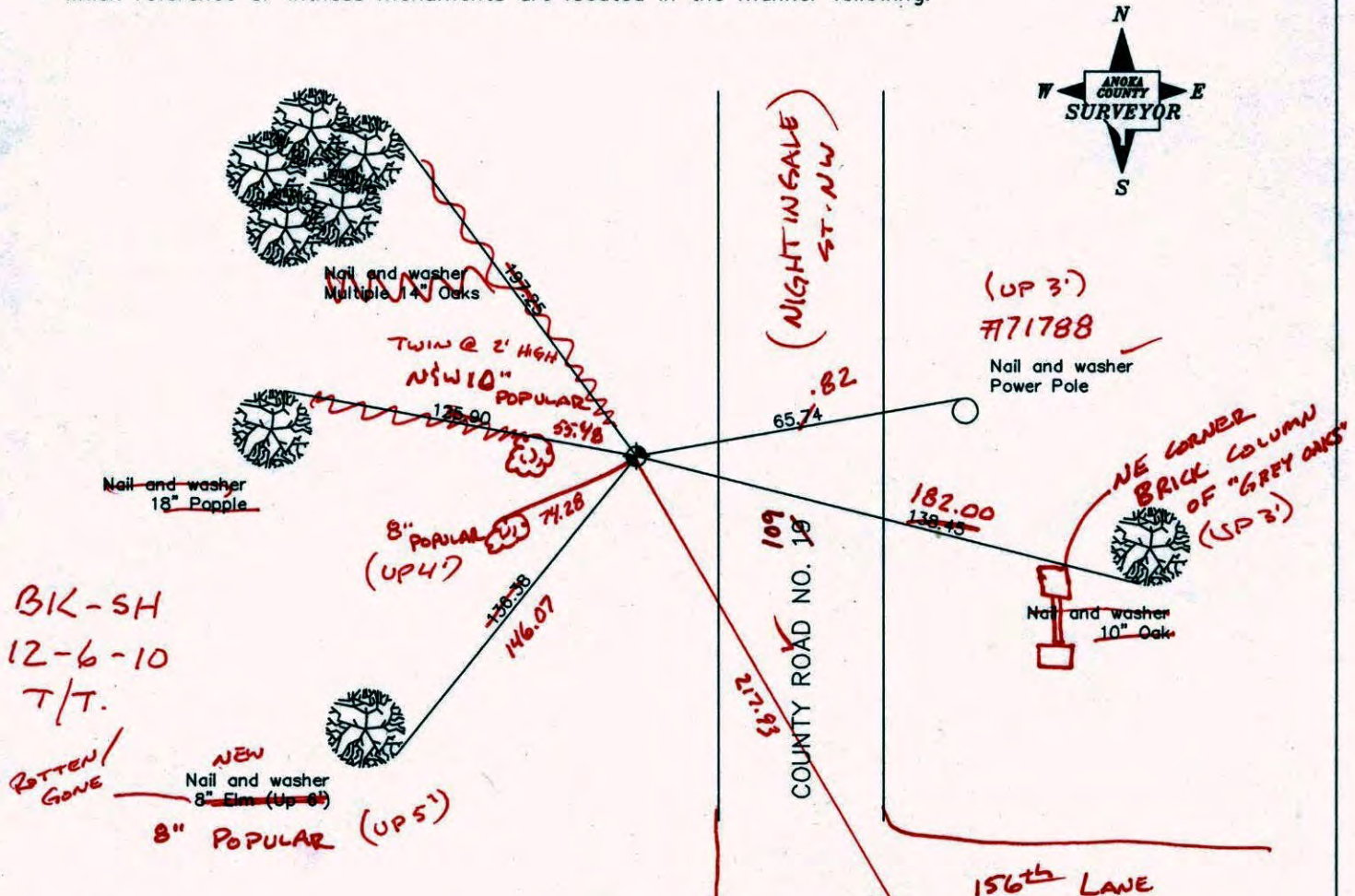
State of Minnesota

North $\frac{1}{4}$ Corner of Sec. 22 Township 32 Range 24

I hereby certify that on the 9th day of August, 1960, I found the described corner which was evidenced by an iron pipe

and I further certify that to perpetuate the location of said corner, I did, at the exact location thereof, place a permanent marker consisting of a cast iron monument (DOWN 0.3)
(0.6" WEST OF BIT EDGE OF SHOULDER)

which reference or witness monuments are located in the manner following:



BK-SH
12-6-10
T/T.

ROTTEN/GONE
NEW
Nail and washer 8" Elm (Up 8')
8" POPULAR (UP 5')

Revised date
8/11/88
7/21/93
7/31/00

County Project Co-ordinates	
Northing	180322.7694
Easting	487227.8667

State Plane Co-ordinates	
Y	# 114382 (UP 3')
X	

Date 7/31/00

CERTIFICATE OF LOCATION OF GOVERNMENT CORNER

County of Anoka

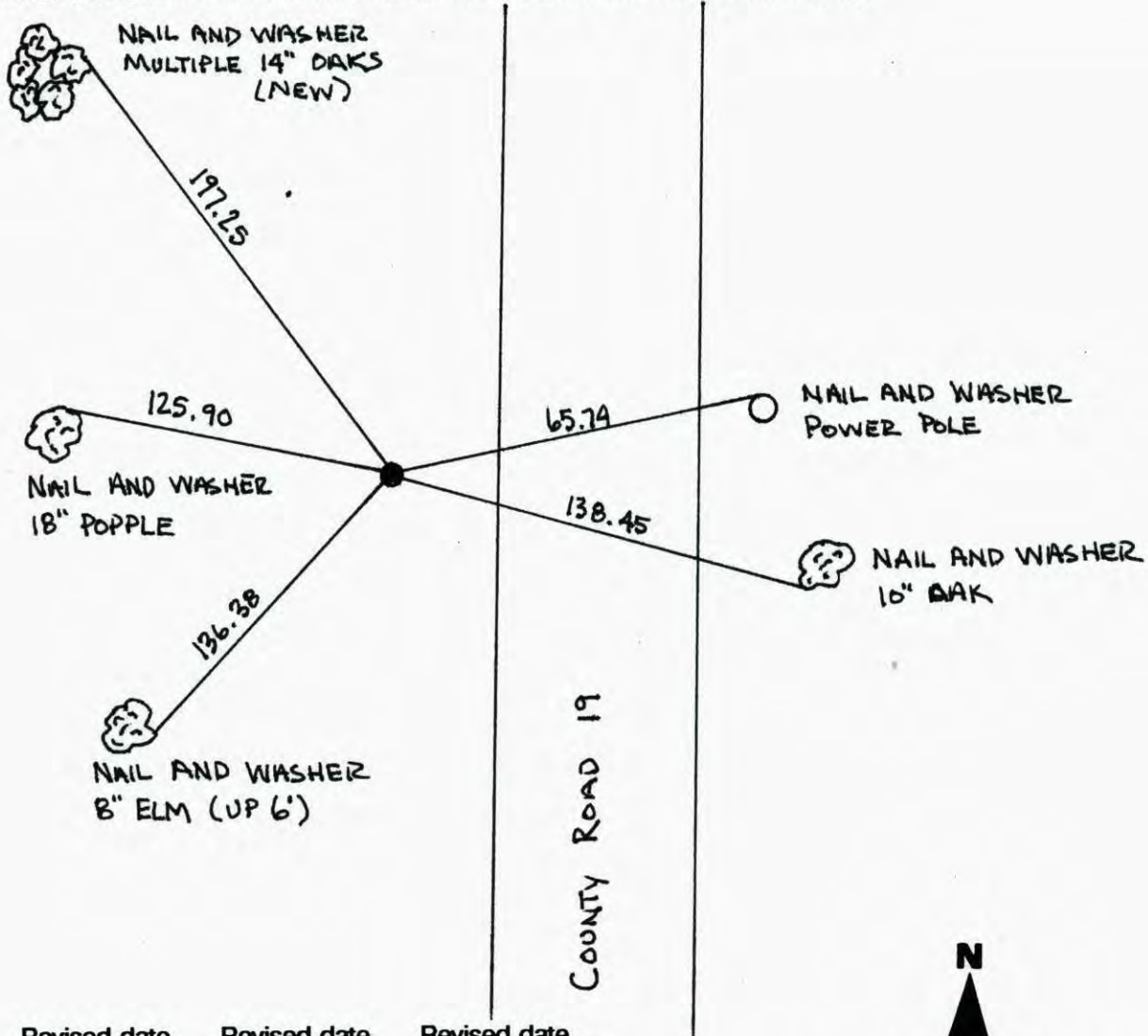
State of Minnesota

NORTH QTR. Corner of Sec. 22 Township 32 Range 24

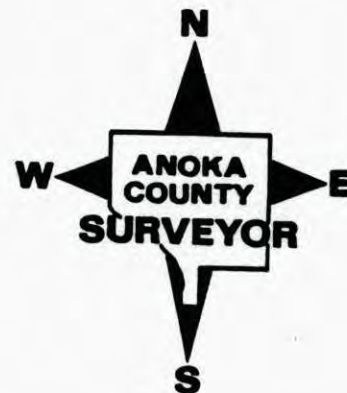
I hereby certify that on the 9TH day of AUGUST, 19 60, I found the described corner which was evidenced by IRON PIPE

and I further certify that to perpetuate the location of said corner, I did, at the exact location thereof, place a permanent marker consisting of CAST IRON MONUMENT

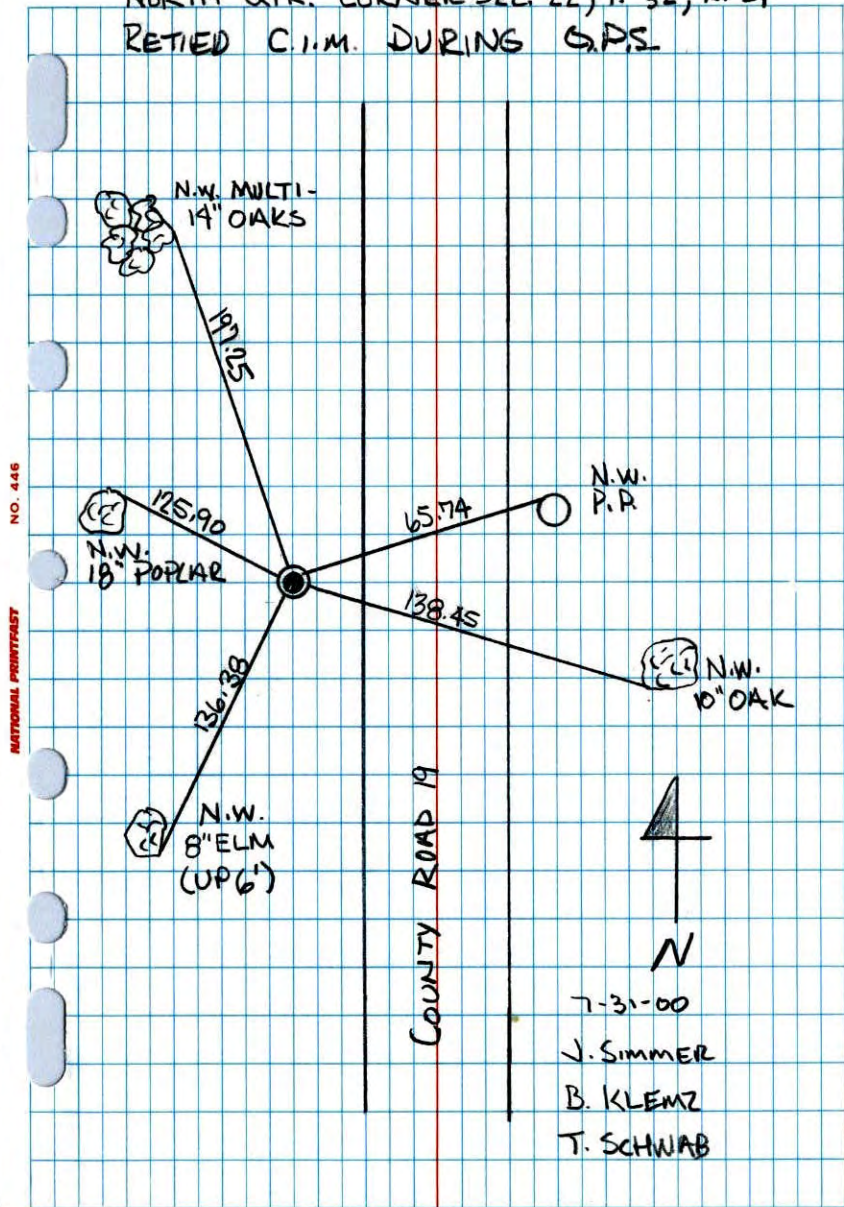
which reference or witness monuments are located in the manner following:



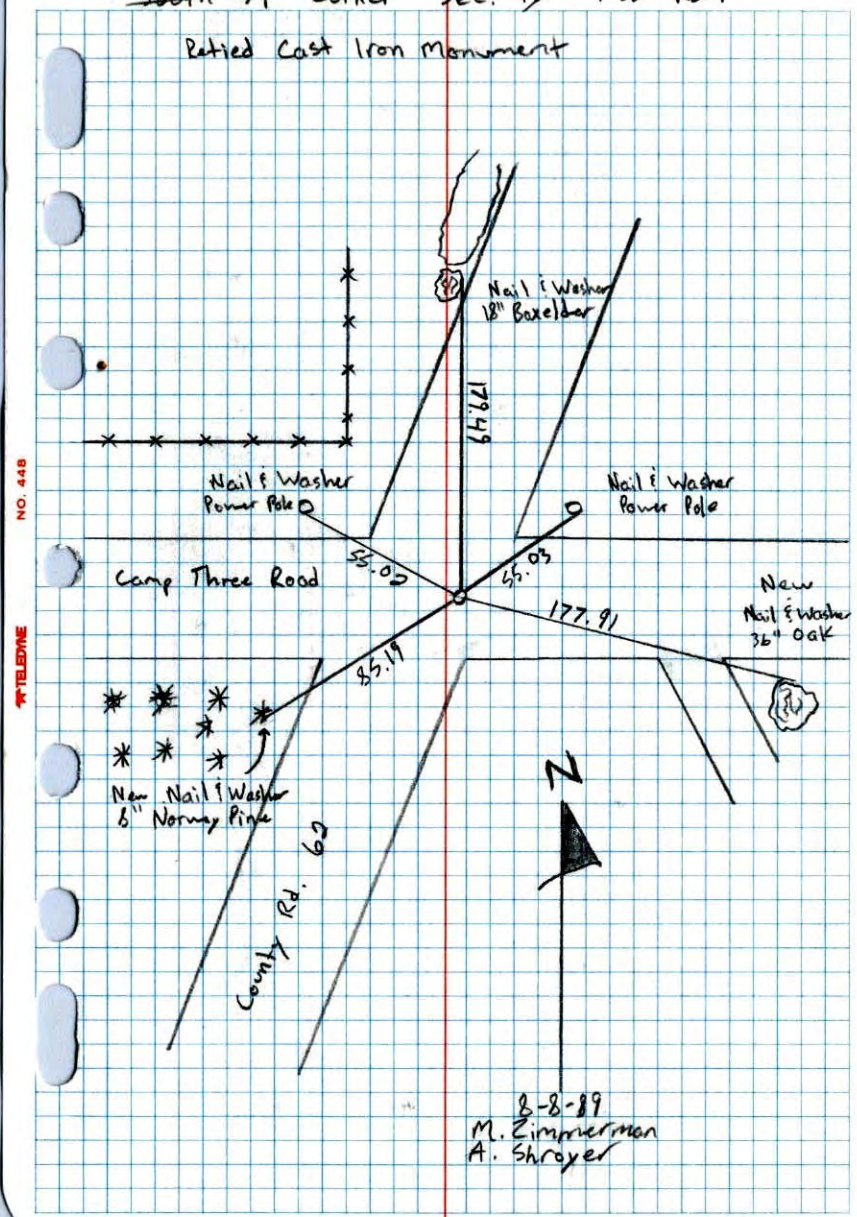
Revised date	Revised date	Revised date
6-25-82		
6-6-85		
8-11-88		
7-21-93		
7-31-00		

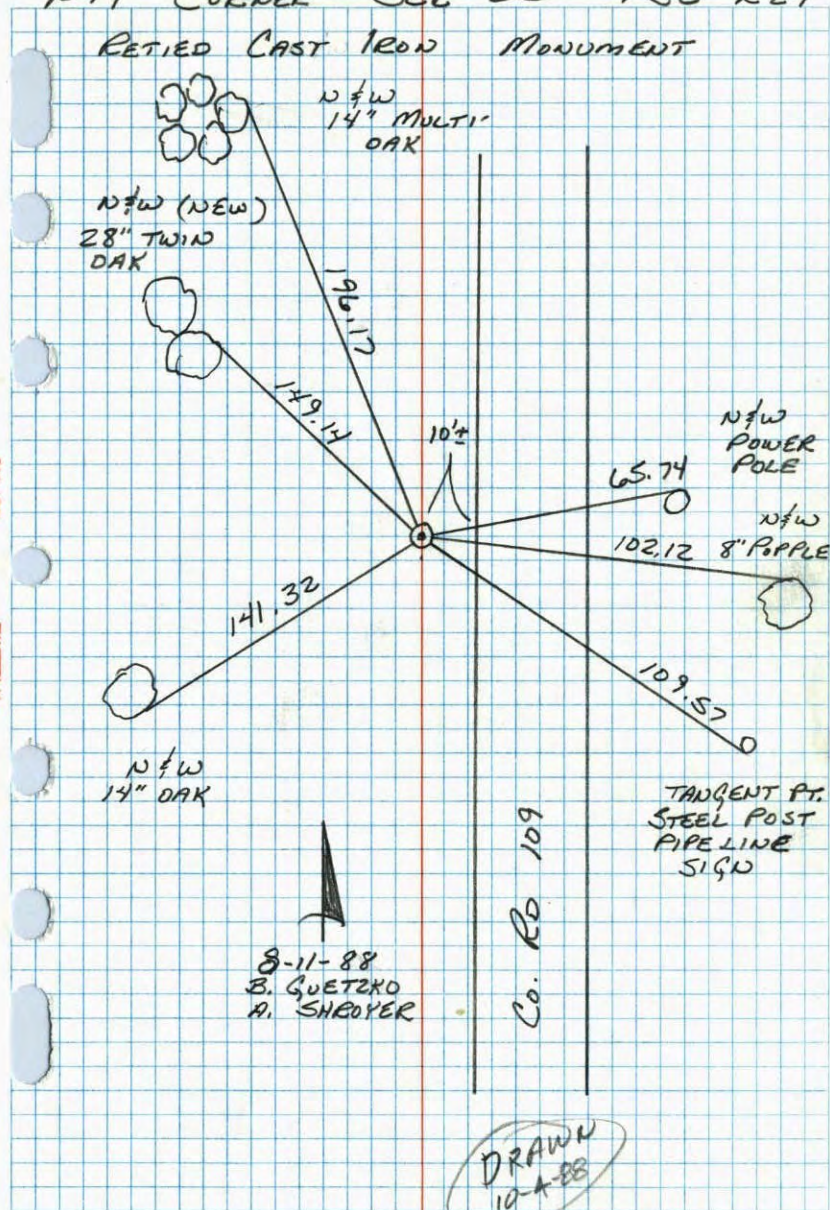


NORTH QTR. CORNER SEC. 22, T. 32, R. 24
 RETIED C.I.M. DURING GPS



North
 South 1/4 Corner Sec. 22 T32 R24
 Retied Cast Iron Monument



N¹/₄ CORNER SEC 22 T32 R24N¹/₄ COR. SEC 22-T32-R24

SET CAST IRON MONUMENT AT INTERSECTION

OF TIES. DOWN 0.4'±

19 AUG 64

M. D. ANDERSON

J. DONLOP

SET CAST IRON MONUMENT FROM 3/4\"/>
 IRON

PIPE USED DURING CONSTRUCTION IN AREA.

2-JUN 76

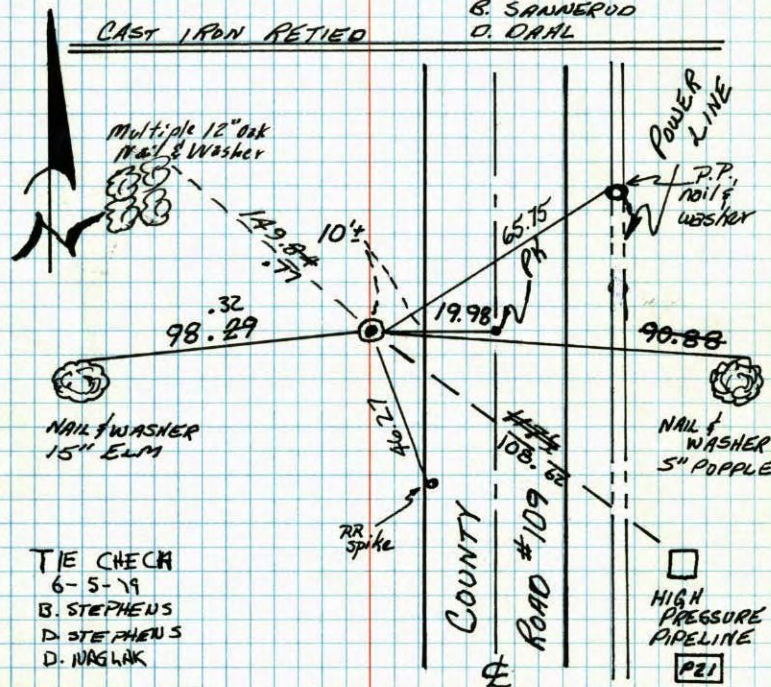
CAST IRON DOWN .10'±

G. ADAMS

B. SANNERUD

D. DAHL

CAST IRON RETIED



TIE CHECK

6-5-79

B. STEPHENS

D. STEPHENS

D. WAGLAK

TIE CHECK

6-25-82

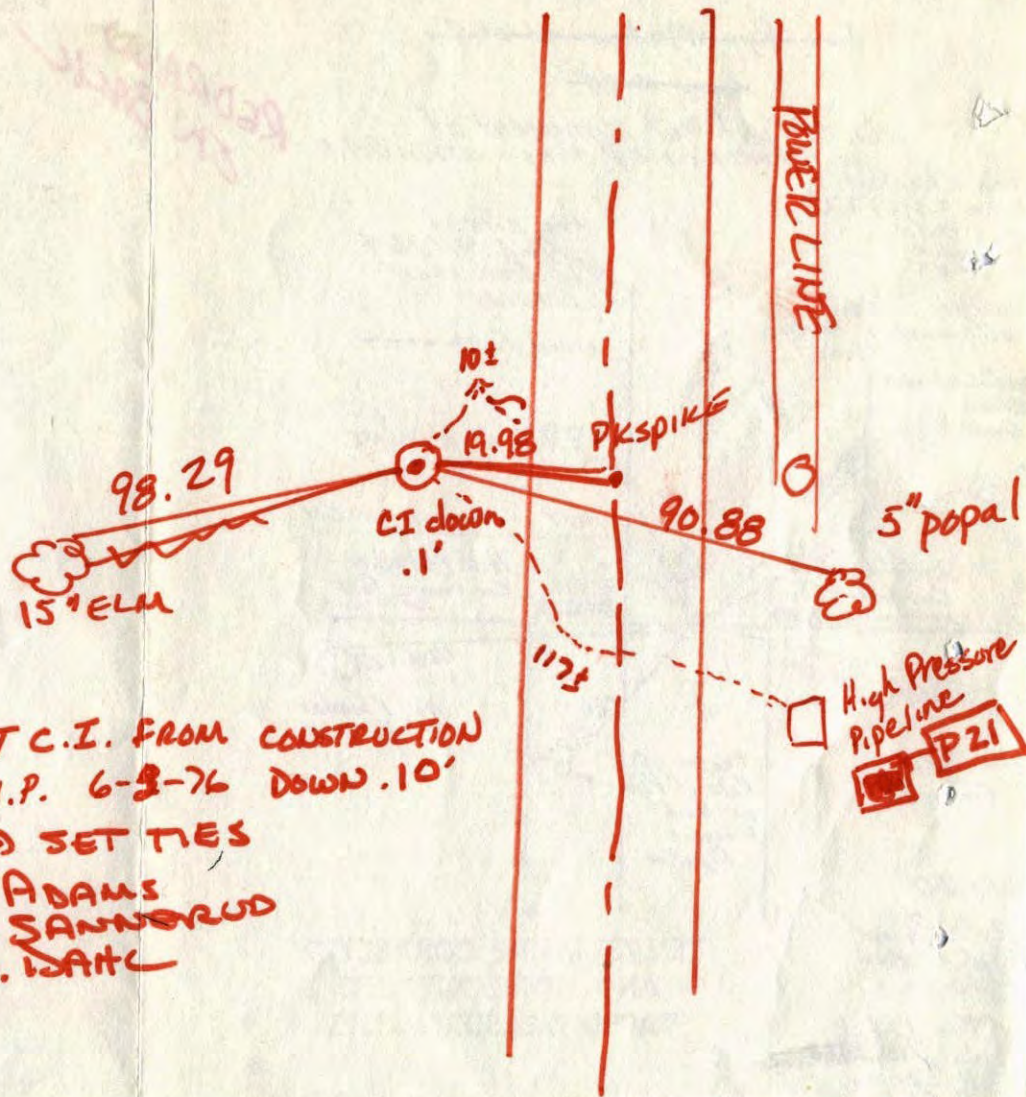
P. ROSS

P. HORNBY

M. LICK

TEMPERATURE CORRECTED
AND HORIZONTALLY
TAPED MEASUREMENTSROLAND W. ANDERSON
COUNTY SURVEYOR
ANOKA COUNTY, MINNESOTA

County
E 109



SET C.I. FROM CONSTRUCTION
 3/4" I.P. 6-2-76 DOWN .10'
 SET TIES
 G. ADAMS
 B. SANNERUD
 D. WATC

N 1/4 Cor. Sec 22-T32-R24

Iron Pipe Mushroomed at Top
down 0.20'

Placed Cast Iron Monument at
intersection of ties - down 0.4'

Ties Checked
 June 23, 1972
 B. Olson
 R. Bauer
 P. Brien

tie check
 Aug. 19, 1964
 M.D. Anderson
 J. Dunlap

Multiple 12" Oak
nail & washer north
side

new tie -----

Nail & Washer
Oak

P.P. Nail & Washer

Cast Iron Monument

Nail & Washer
Cor. fence Post
north side

Nail & Washer
Cor. fence Post
north side

98.80 98.34

30.76

134.32'

Nail & Washer
13" Elm

Center of
Hole of Pipe
on High
Pressure
Pipeline

Nail & Washer
18" Bl. Oak

SEE NEW
TIES

8/9/60

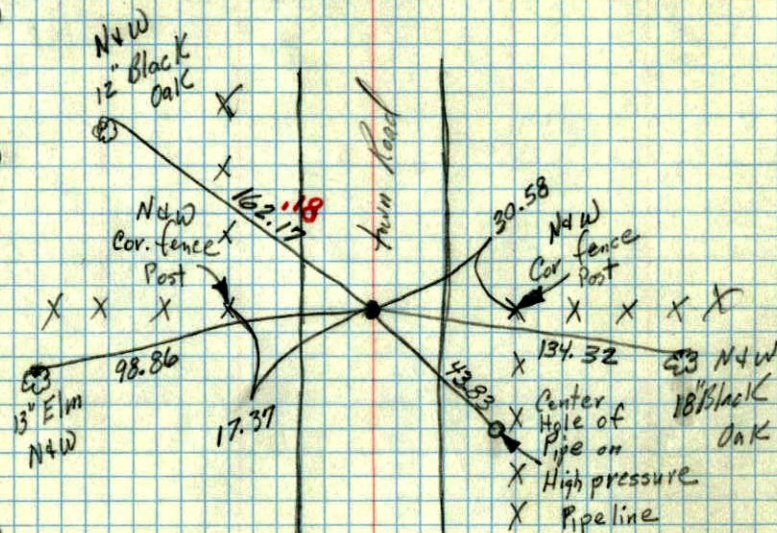
Bill Rogers
 Randy Carlson
 Robinson

Tie Check
 July 15, 1968
 H. Larson
 G. Elsberry

TEMPERATURE CORRECTED
 AND HORIZONTALLY
 TAPED MEASUREMENTS

ROLAND W. ANDERSON
 COUNTY SURVEYOR
 ANOKA COUNTY, MINNESOTA

N¹/₄ Cor. Sec. 22 T32R24
 Iron Pipe Mushroomed at Top
 down 0.20



8/9/60

TC
 Temp. 78°
 8/9/60
 Bill Rogers
 Randy Carlson
 Ralph Robinson