

CERTIFICATE OF LOCATION OF GOVERNMENT CORNER

County of Anoka

State of Minnesota

North 1/4 Corner of Sec. 21 Township 32 Range 24

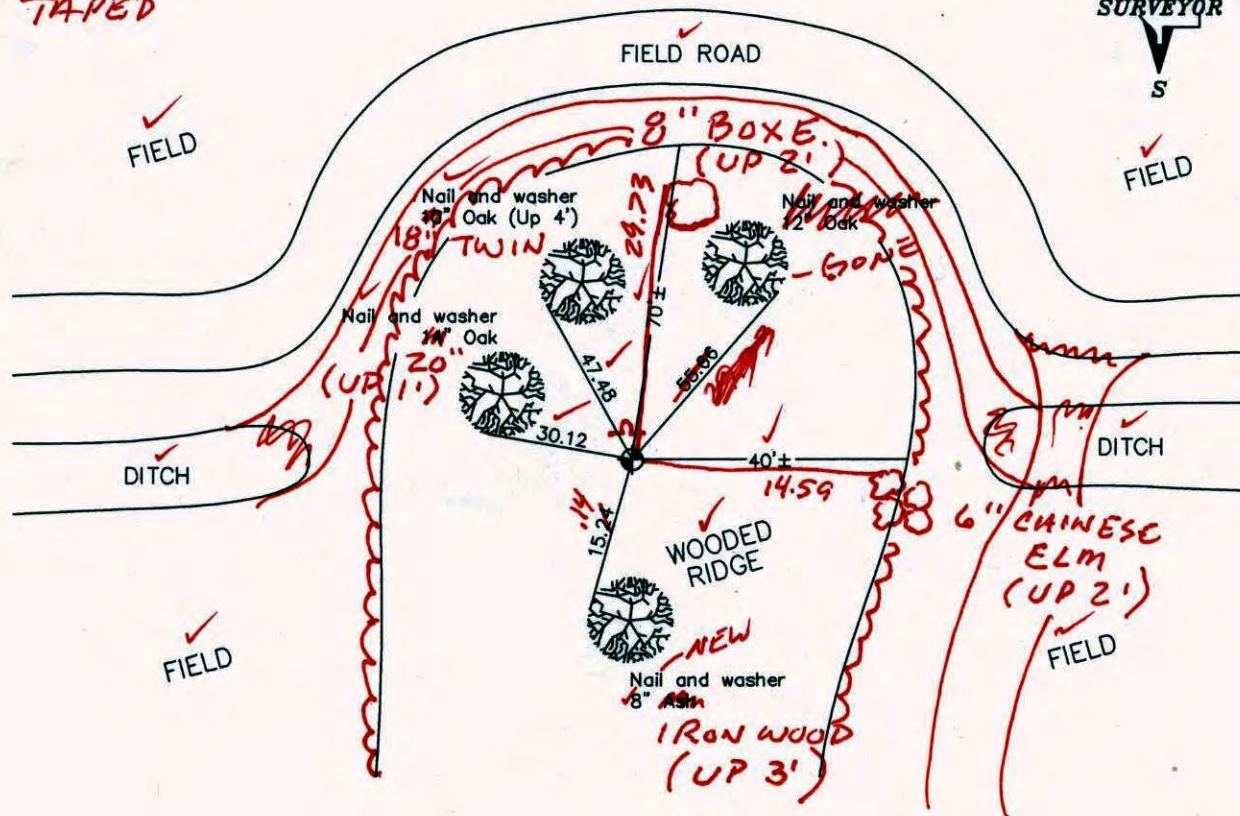
I hereby certify that on the 31st day of May, 1979, I found the described corner which was evidenced by area resurvey

and I further certify that to perpetuate the location of said corner, I did, at the exact location thereof, place a permanent marker consisting of a cast iron monument

SIGN & POST ON NORTH SIDE (DOWN 0.5')

which reference or witness monuments are located in the manner following:

*BK-SH
11-4-10
TAPED*



Revised date

8/12/88
8/2/93
2/13/01

N.A.D. 1983 Co-ordinates

County Project Co-ordinates	State Plane Co-ordinates
Northing <u>180357.7941</u>	Y <u> </u>
Easting <u>482031.7027</u>	X <u> </u>

Date 2/13/01

CERTIFICATE OF LOCATION OF GOVERNMENT CORNER

County of Anoka

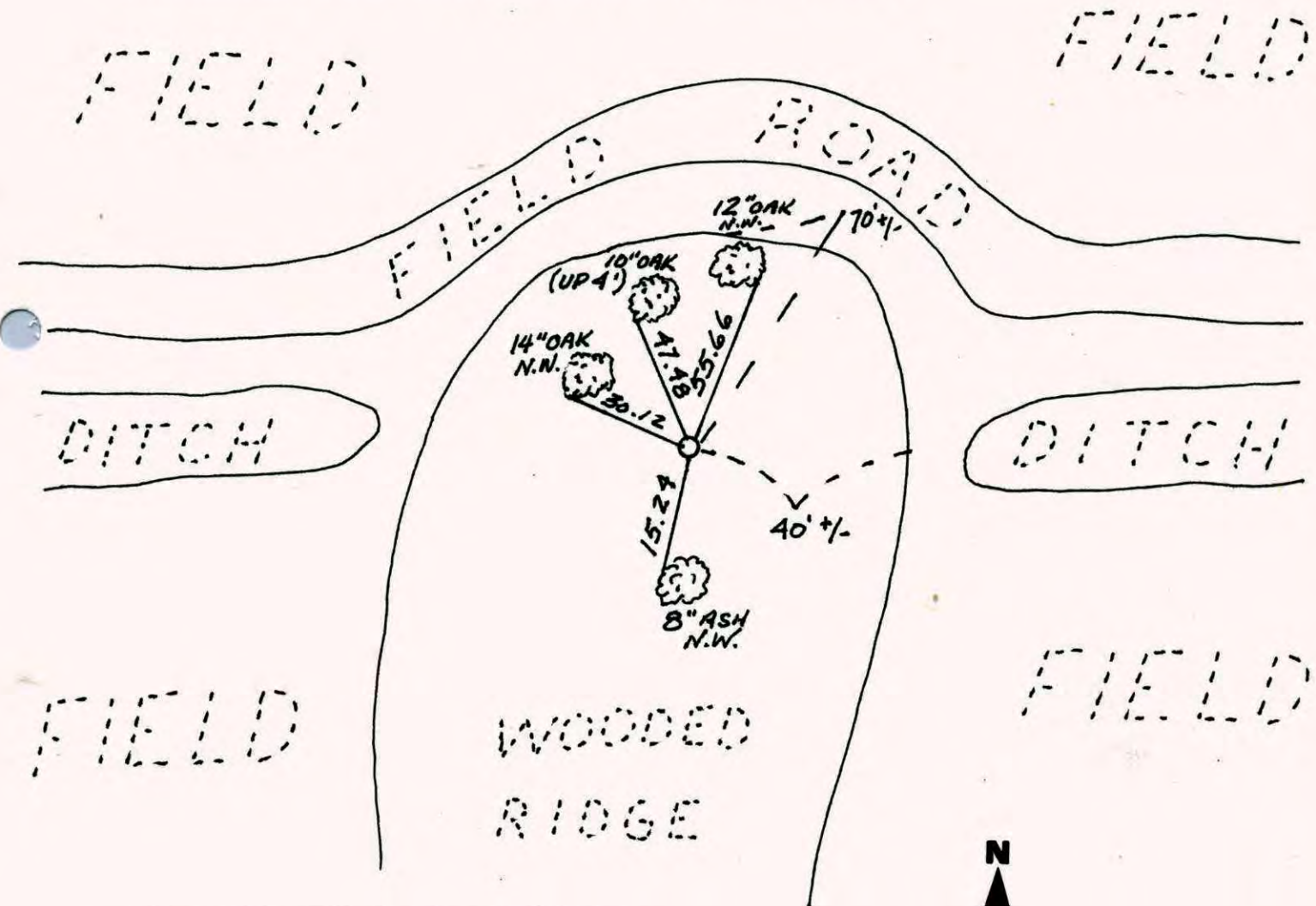
State of Minnesota

NORTH 1/4 Corner of Sec. 21 Township 32 Range 24

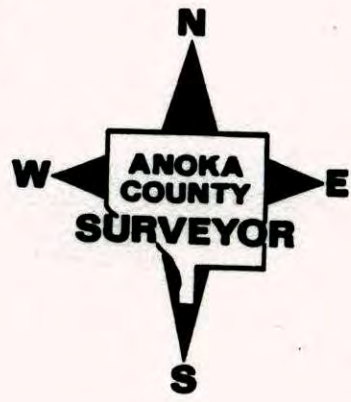
I hereby certify that on the 31 day of MAY, 19 79, I found the described corner which was evidenced by AREA RESURVEY

and I further certify that to perpetuate the location of said corner, I did, at the exact location thereof, place a permanent marker consisting of CAST IRON MON.

which reference or witness monuments are located in the manner following:



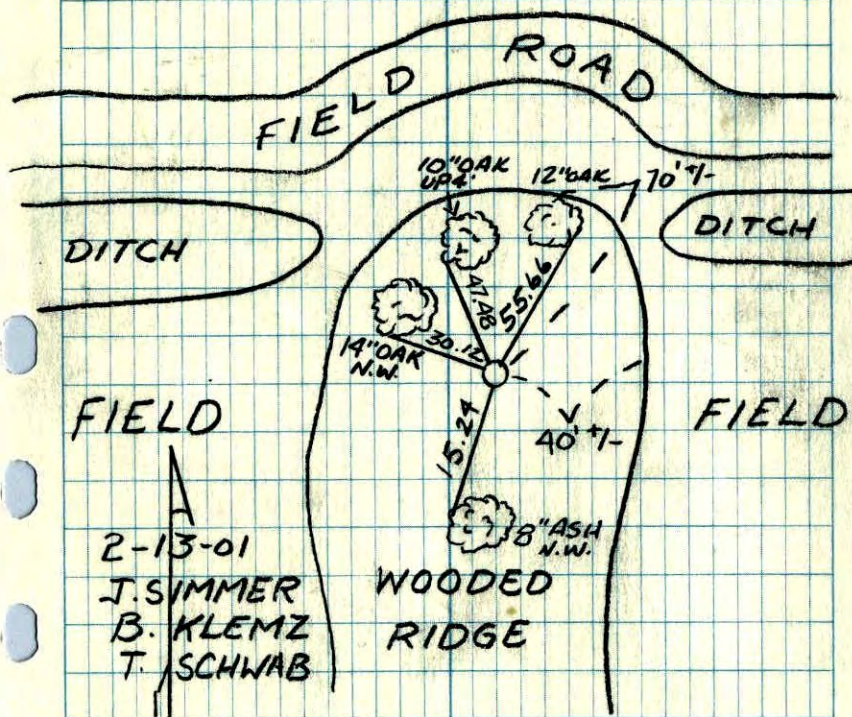
Revised date	Revised date	Revised date
8-12-88		
8-2-93		
2-13-01		



NORTH 1/4 SEC. 21 T32 R24

GPS AND RETIED CAST IRON MON.

FIELD



2-13-01
J. SIMMER
B. KLEMZ
T. SCHWAB

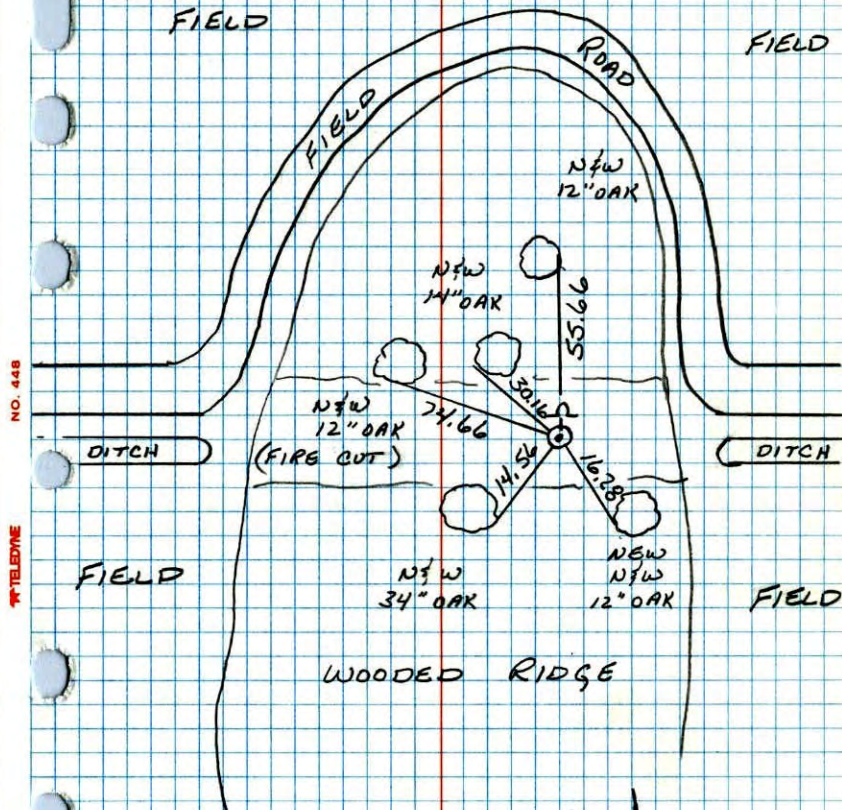
WOODED
RIDGE

N 1/4 CORNER SEC 21 T32 R24

REPLACED & RETIED CAST IRON MONUMENT

FIELD

FIELD



NO. 448

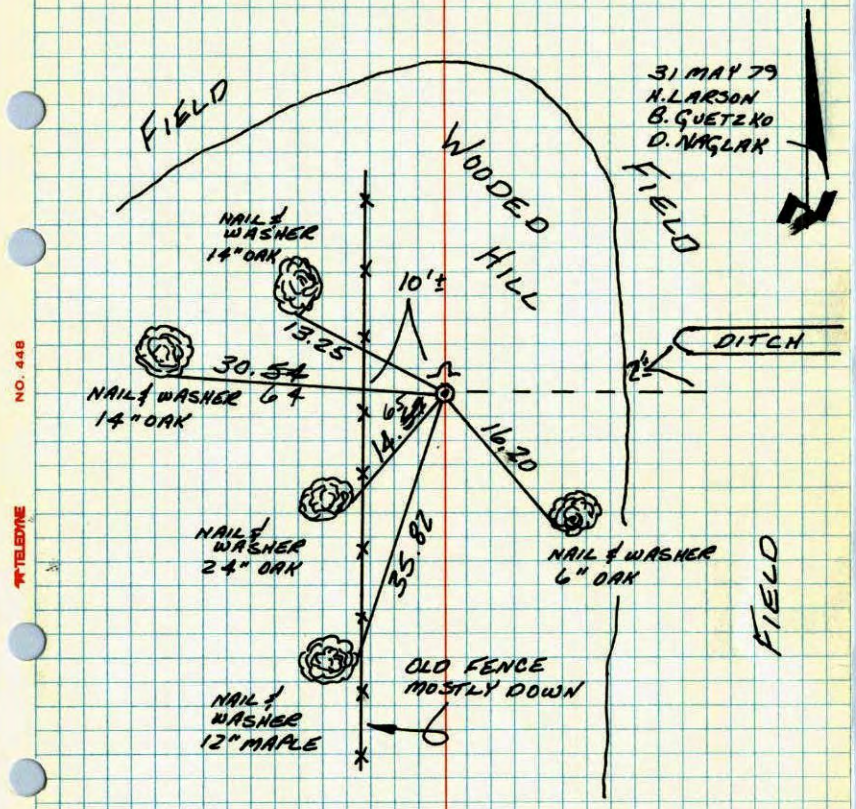
TELEPHONE

8-12-88
B. GUETZKO
A. SHROYER
90° 200' TAPE

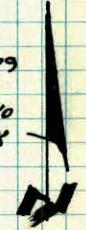
DRAWN
10-4-88

N 1/4 CORNER SECTION 21-T32-R24

SET CAST IRON MONUMENT FROM AREA RESURVEY.
SET CAST IRON FLUSH WITH SIGN AND POST ON NORTH SIDE.



31 MAY 79
N. LARSON
B. GUETZKO
D. NAGLAK



NO. 448

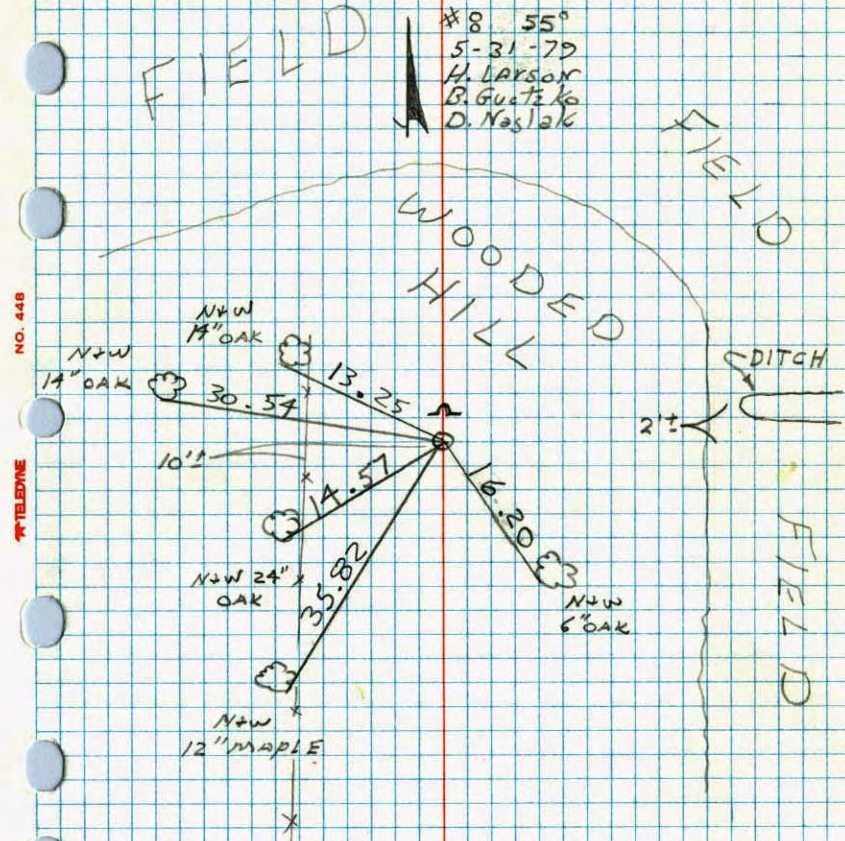
TELEPHONE

TIE CHECK
7-7-83
P. ROSS
P. HORNBY
J. BEIER
TEMPERATURE CORRECTED
AND HORIZONTALLY
TAPED MEASUREMENTS

ROLAND W. ANDERSON
COUNTY SURVEYOR
ANOKA COUNTY, MINNESOTA

N 1/4 COR. SECTION 21 T32 R24

SET CAST IRON MONUMENT FROM
AREA RESURVEY SET C.I. FLUSH
WITH SIGN + POST ON N. SIDE.



#8 55°
5-31-79
H. LARSON
B. GUETZKO
D. NAGLAK



NO. 448

TELEPHONE

TIE CHECK
7-7-83
P. ROSS
P. HORNBY
J. BEIER
TEMPERATURE CORRECTED
AND HORIZONTALLY
TAPED MEASUREMENTS

ROLAND W. ANDERSON
COUNTY SURVEYOR
ANOKA COUNTY, MINNESOTA