

CERTIFICATE OF LOCATION OF GOVERNMENT CORNER

County of Anoka

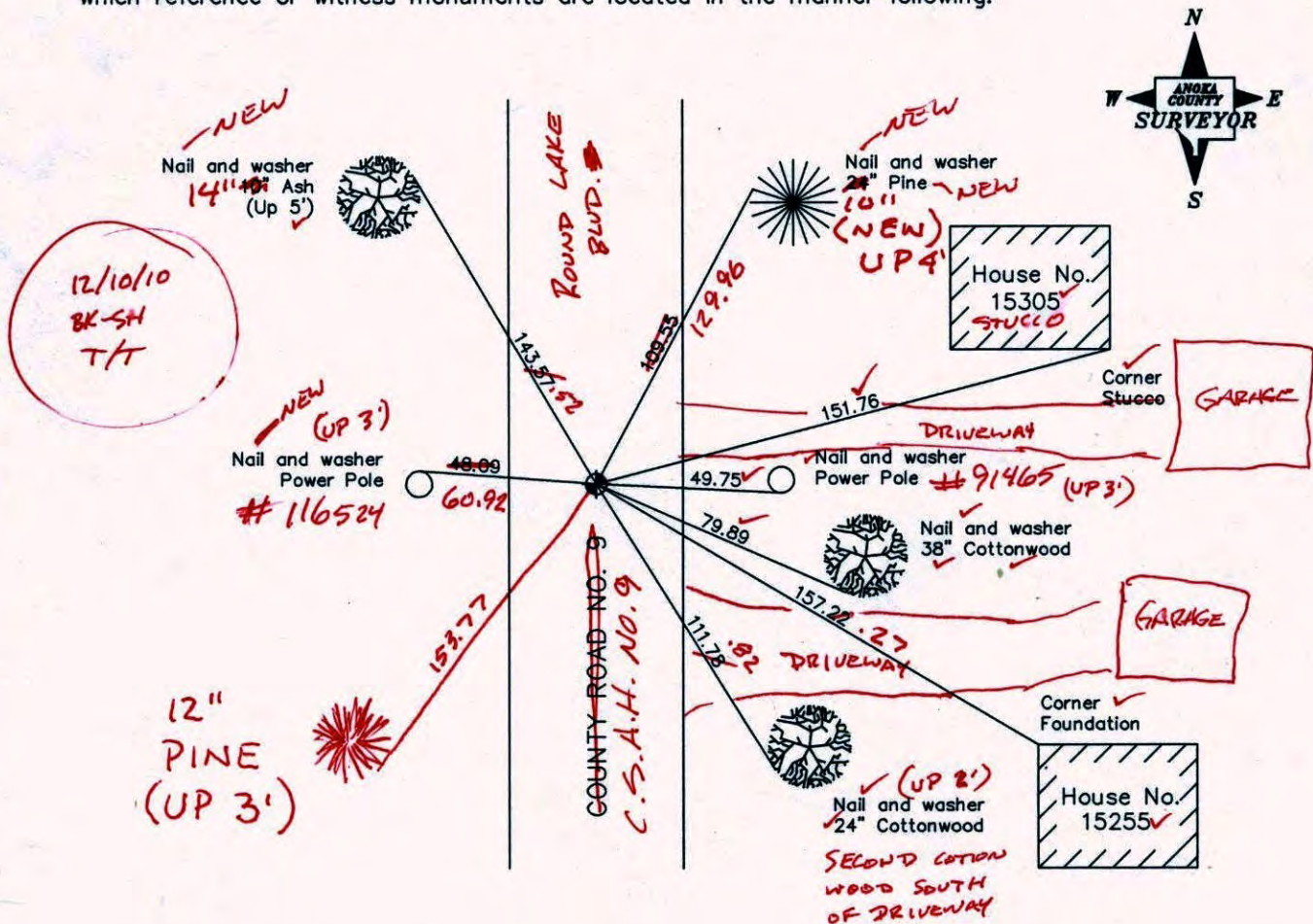
State of Minnesota

West 1/4 Corner of Sec. 21 Township 32 Range 24

I hereby certify that on the 31st day of August, 1959, I found the described corner which was evidenced by a concrete monument on top of an oval stone (removed in 1980)

and I further certify that to perpetuate the location of said corner, I did, at the exact location thereof, place a permanent marker consisting of a cast iron monument on top of the concrete monument (IN MIDDLE OF NORTH BOUND LANE) (FLUSH)

which reference or witness monuments are located in the manner following:



Revised date

7/19/92
4/16/99
10/9/00

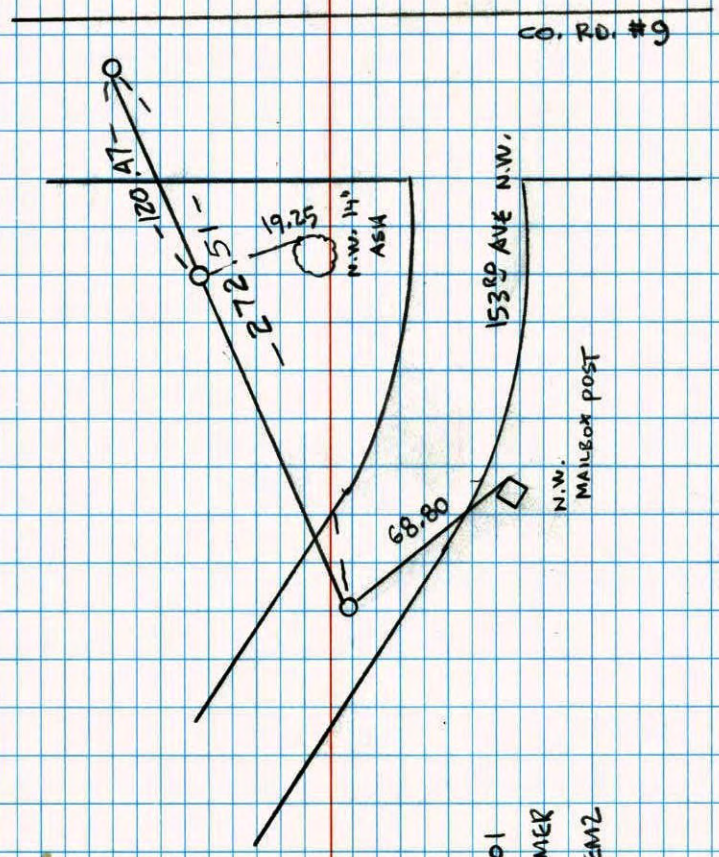
N.A.D. 1983 Co-ordinates

County Project Co-ordinates	State Plane Co-ordinates
Northing <u>177701.5032</u>	Y _____
Easting <u>479358.8706</u>	X _____

Date 10/9/00

WEST 1/4 COR. SEC. 21 T32 R24
RETIED & PULLED CAST IRON MON.
FOR ROAD CONST.

NATIONAL PRINTING
NO. 446



7-3-01
J. SIMMER
B. KLEMZ

CERTIFICATE OF LOCATION OF GOVERNMENT CORNER

County of Anoka

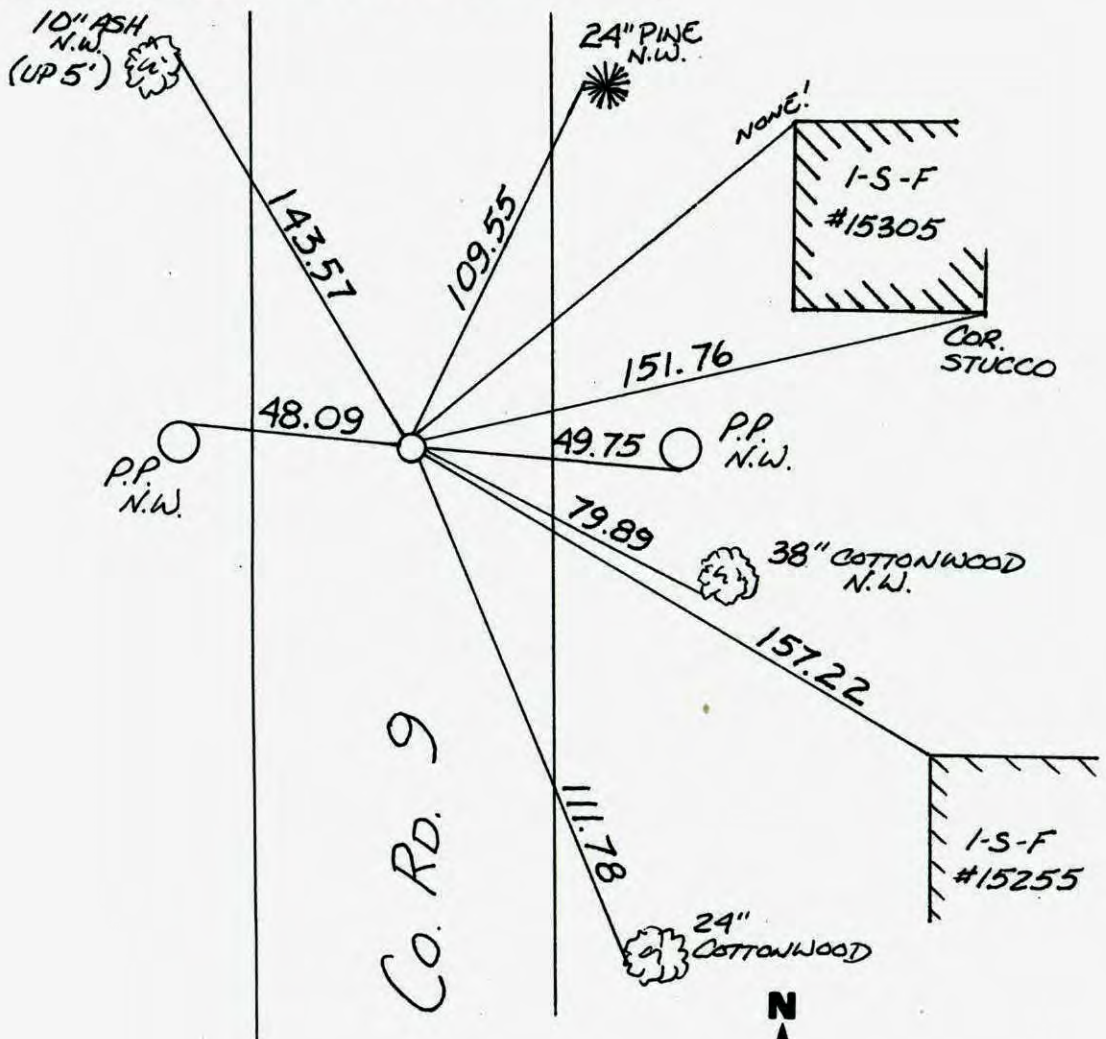
State of Minnesota

WEST 1/4 Corner of Sec. 21 Township 32 Range 24

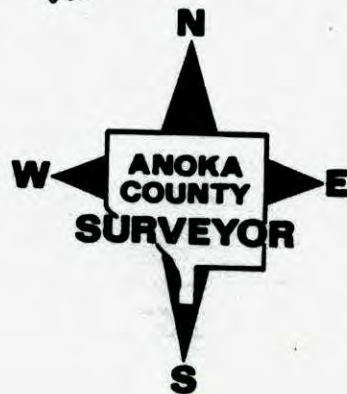
I hereby certify that on the 31 day of AUG., 19 59, I found the described corner which was evidenced by CONC. ON TOP OF OVAL STONE, STONE REMOVED 1980 SET C.I. TOP OF CONC.

and I further certify that to perpetuate the location of said corner, I did, at the exact location thereof, place a permanent marker consisting of CAST IRON MON.

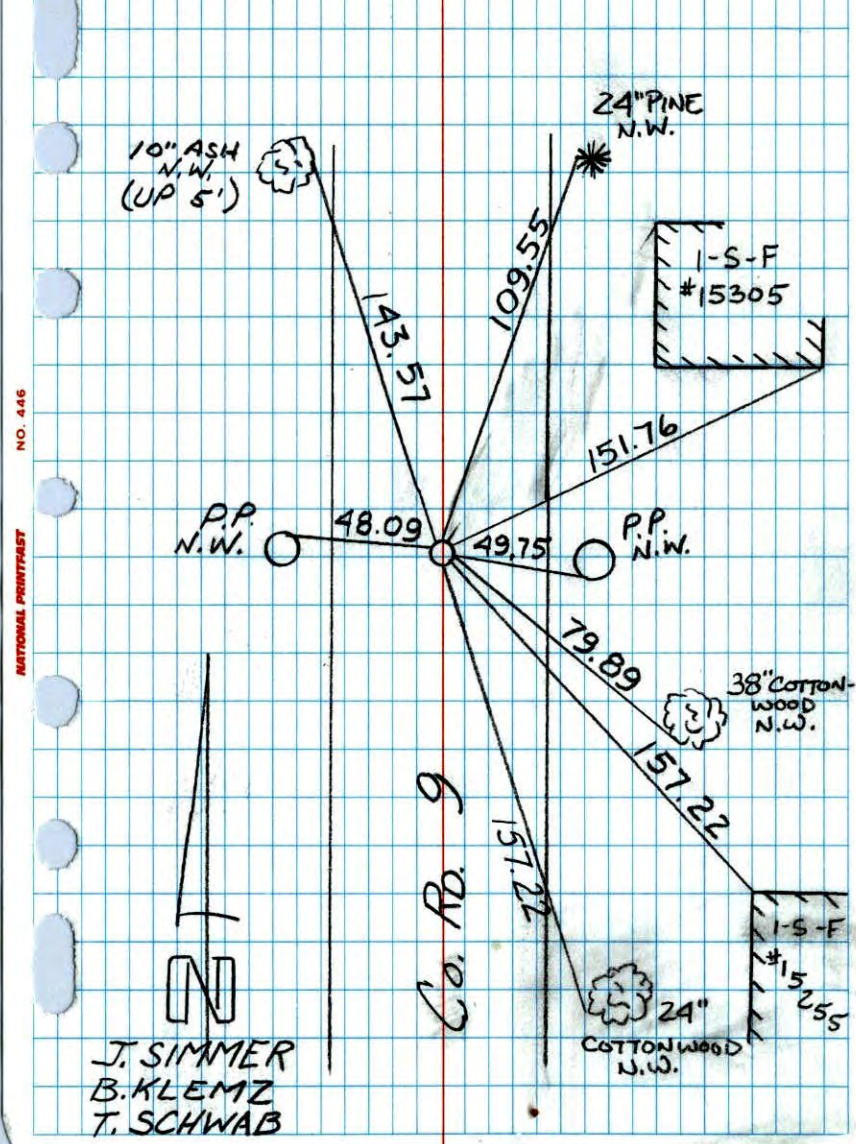
which reference or witness monuments are located in the manner following:



Revised date	Revised date	Revised date
7-19-92		
4-16-99		
10-9-00		



WEST 1/4 SEC. 21 T32 R24
RETIED CAST IRON MON.



NATIONAL INSTRUMENT NO. 446

W 1/4 CORNER SECTION 21-T32-R24

RESET CAST IRON MONUMENT ON TOP OF CONCRETE MONUMENT AFTER CONSTRUCTION. CAST IRON FLUSH AND 6" EAST OF CENTERLINE

Aug. 31, 1959
R.W. Anderson
Ray Fields, Assisting

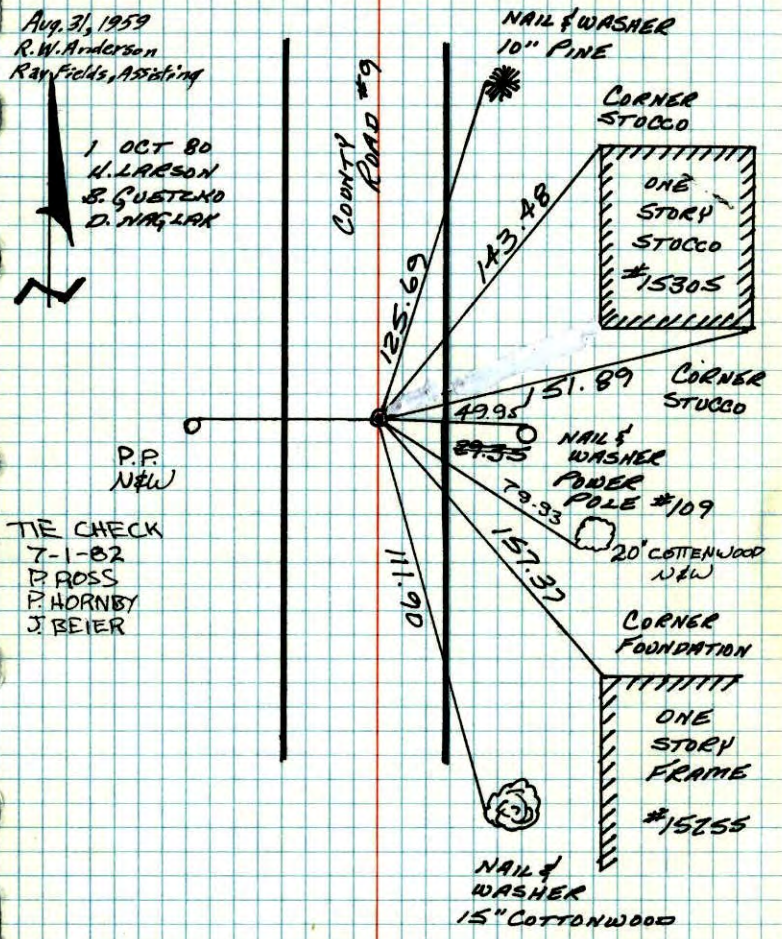
1 OCT 80
H. LARSON
B. GUSTAKO
D. MAGLAK

TIE CHECK
7-1-82
P. ROSS
P. HORNBY
J. BEIER

TEMPERATURE CORRECTED
AND HORIZONTALLY,
TAPED MEASUREMENTS

ROLAND W. ANDERSON
COUNTY SURVEYOR
ANOKA COUNTY, MINNESOTA

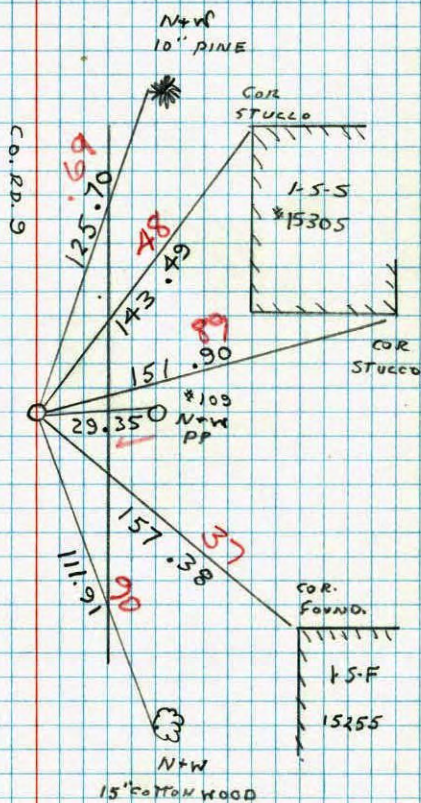
NO. 448 TELEPHONE



W 1/4 CORNER SECTION 21 T32 R24

RESET CAST IRON MONUMENT ON
TOP OF CONCRETE MONUMENT AFTER
CONSTRUCTION
C.), FLUSH AND 6'± EAST OF E

200' 62°
10-1-80
H. LARSON
B. GUETZKO
D. MAGLAK



W 1/4
~~E 1/4~~ SECTION 20
T32 R24

FOUND STONE
UNDER CONCRETE
MONUMENT
STONE WAS DOWN
APPRO. 5'±

8-11-80
H. LARSON
B. GUETZKO
D. MAGLAK

This oval shaped stone with an "x" on the top was used to mark the W 1/4 corner of Section 21, Township 32, Range 24, State set is unknown. A concrete monument was set on top of the stone in 1941 by H. A. Cartwright. On Aug. 11, 1980, the stone was removed, the concrete replaced, and a cast iron monument was set flush with the surface of the roadway.

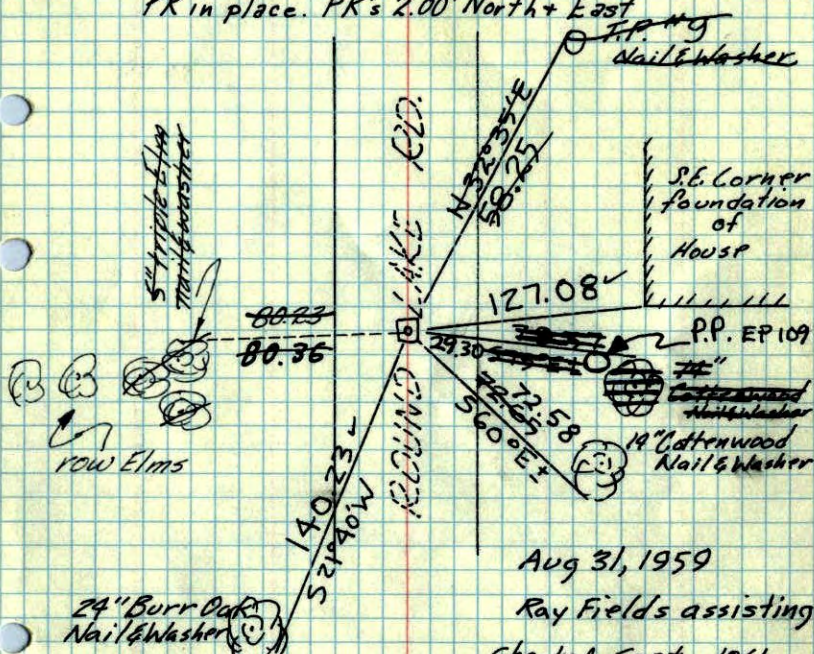
ROLAND W. ANDERSON
COUNTY SURVEYOR
ANOKA COUNTY, MINNESOTA

W 1/4 Cor. Sec. 21, 32-24

CONCRETE Monument

Iron pipe top center down 0.2'±.

PK in place. PK's 2.00' North + East



Aug 31, 1959

Ray Fields assisting

Checked Sept. 1961

Tie Check
July 5, 1972
B. Olson
R. Bauer
D. Brien

tie check
Aug. 22, 1967
M.D. Anderson
J. Dunlap

All ties good

new tie -----

Tie Check
July 22, 1968
D. Powell
P. Pieh

TIE CHECK
6-3-76
G. ADAMS
B. SANNEBOO
O. DANL

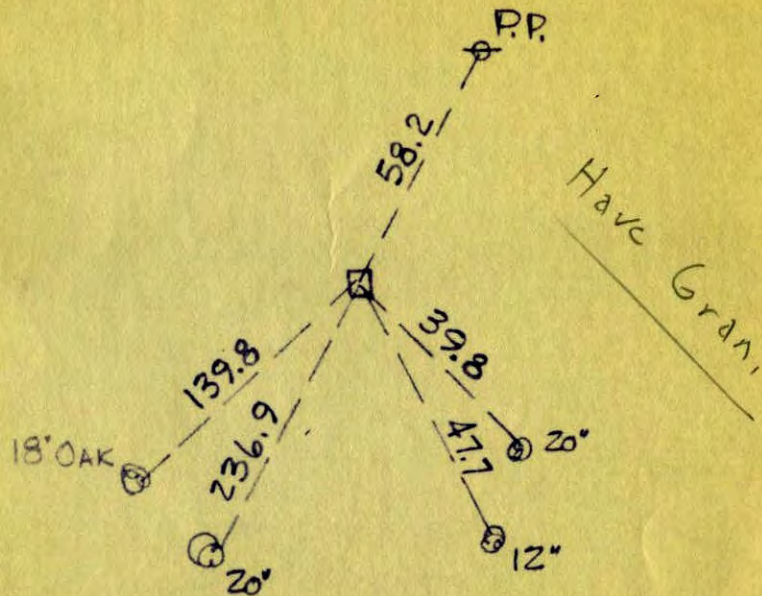
ROLAND W. ANDERSON
COUNTY SURVEYOR
ANOKA COUNTY, MINNESOTA

TEMPERATURE CORRECTED
AND HORIZONTALLY
TAPED MEASUREMENTS

W 1/4 CORNER OF SECTION 21
TOWNSHIP 32, RANGE 24

CONC. MON.
3/21/61

118/12

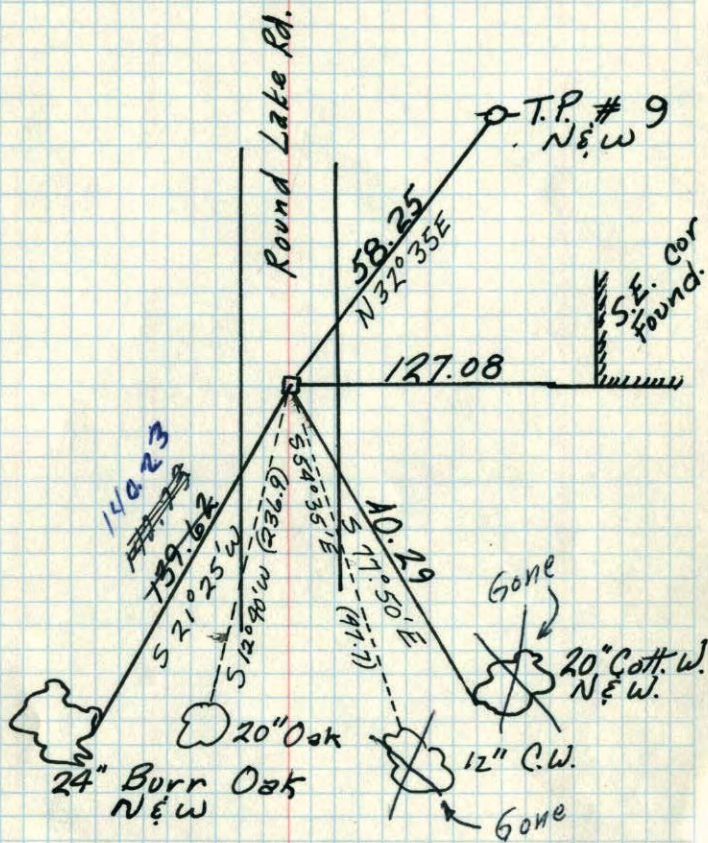


Have Gran.

N. C. HOIUM
AND ASSOCIATES, INC.
LAND SURVEYORS

ANOKA, MINNESOTA

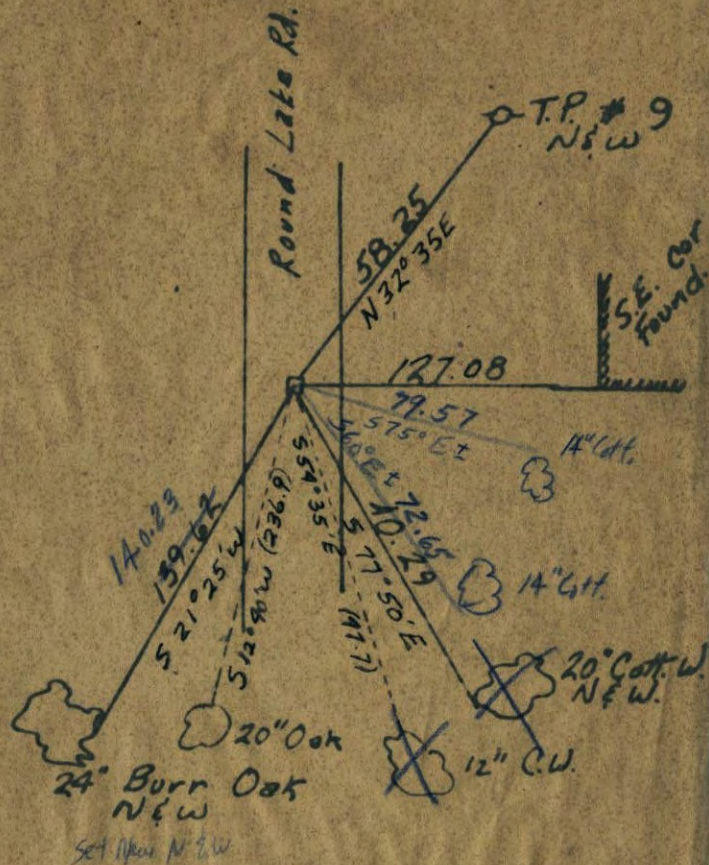
19
 W 1/4 Cor. Sec. 21, T32, R24
 Granite Mon.
 Iron Center



ROLAND W. ANDERSON
 COUNTY SURVEYOR
 ANOKA COUNTY, MINNESOTA

Ray Fields
 assisting
 Aug 31, 1959
 N.C. Hoium

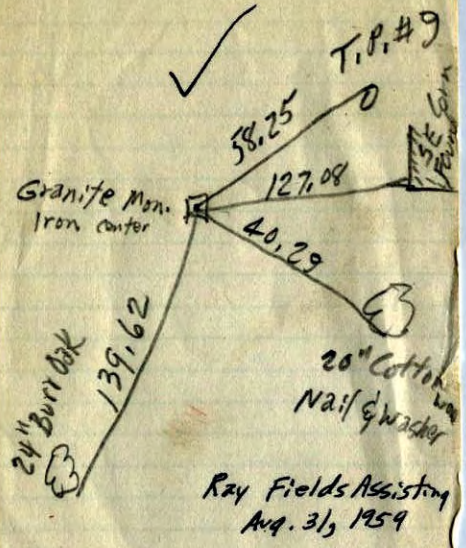
14
 W 1/4 Cor. Sec. 21, T32, R24
 Granite Mon.
 Iron Center



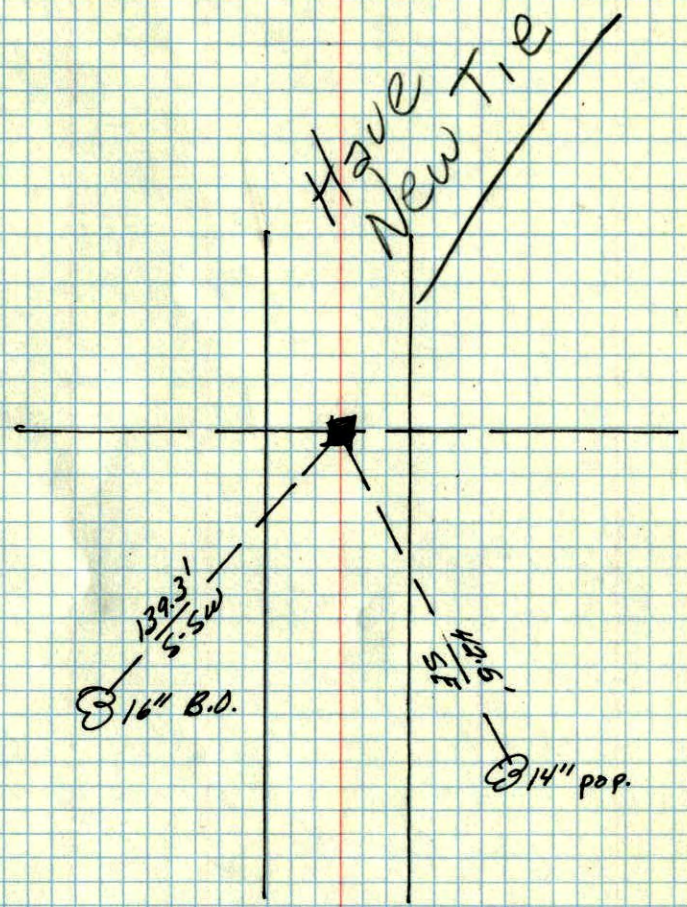
ROLAND W. ANDERSON
 COUNTY SURVEYOR
 ANOKA COUNTY, MINNESOTA

Ray Fields
 assisting
 Aug 31, 1959
 N.C. Hoium

W 1/4 Corn. Sec. 21, 32-34



W 1/4 corner of Sec. 21 Grow twp. ✓ 9



Anoka Co. Hwy. Dept.