

# CERTIFICATE OF LOCATION OF GOVERNMENT CORNER

County of Anoka

State of Minnesota

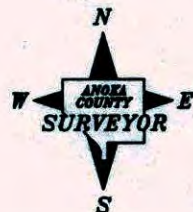
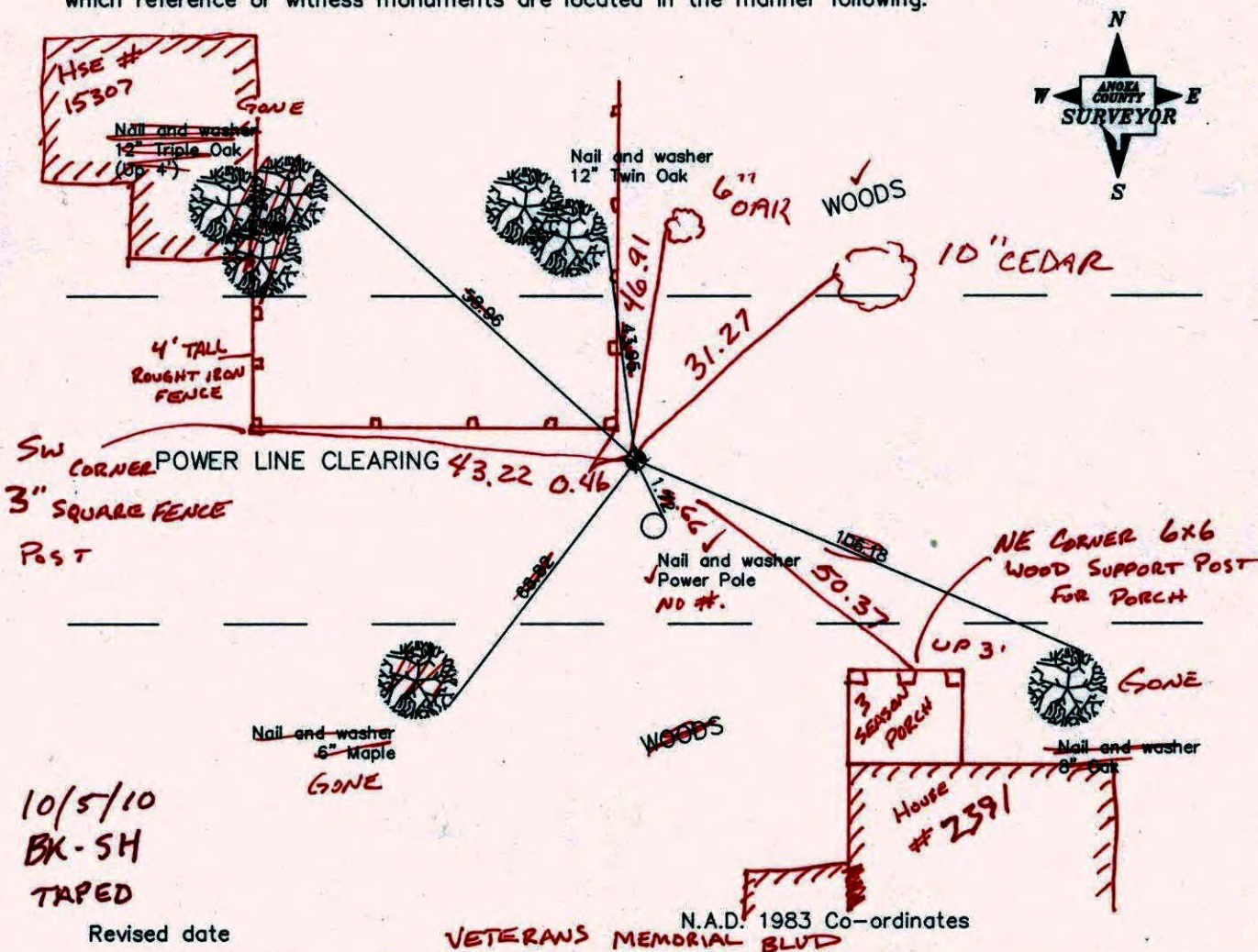
West 1/4 Corner of Sec. 22 Township 32 Range 24

I hereby certify that on the 5th day of August, 1968, I found the described corner which was evidenced by a 3" x 5" fieldstone and 3/4" iron pipe

and I further certify that to perpetuate the location of said corner, I did, at the exact location thereof, place a permanent marker consisting of a cast iron monument SIGN & POST (FLUSH) ON NORTH SIDE

which reference or witness monuments are located in the manner following:

VERDIN ST.



10/5/10  
BX-SH  
TAPED

Revised date

8/12/88
7/21/93
2/6/01

N.A.D. 1983 Co-ordinates  
**VETERANS MEMORIAL BLVD**

County Project Co-ordinates	
Northing	<u>177751.1978</u>
Easting	<u>484652.5229</u>

State Plane Co-ordinates	
Y	_____
X	_____

Date 2/6/01



# CERTIFICATE OF LOCATION OF GOVERNMENT CORNER

County of Anoka

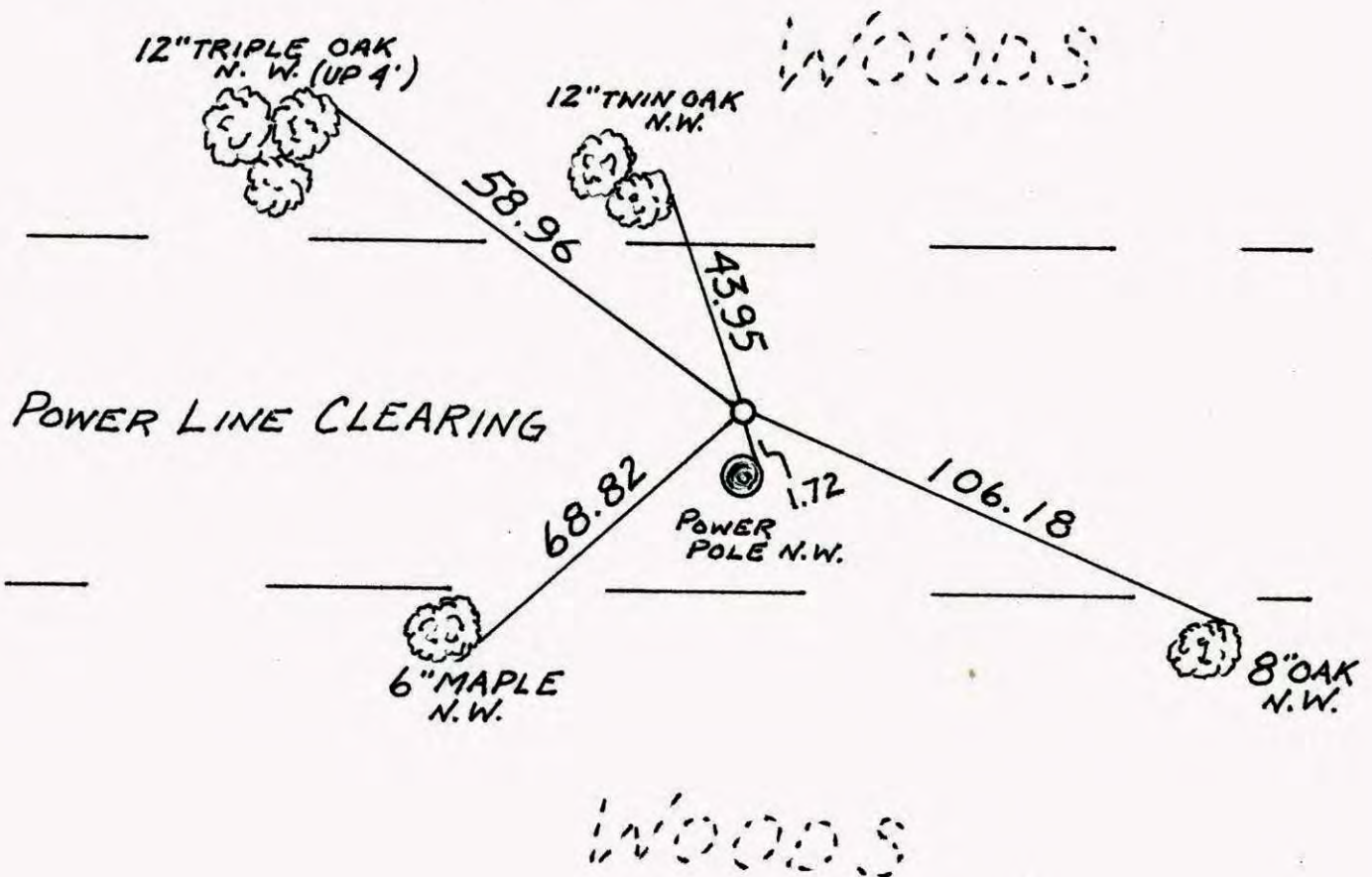
State of Minnesota

WEST 1/4 Corner of Sec. 22 Township 32 Range 24

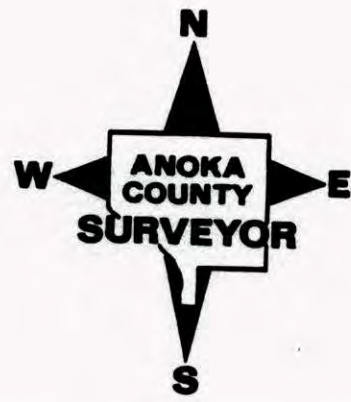
I hereby certify that on the 5 day of AUG., 1968, I found the described corner which was evidenced by 3"x5" FIELDSTONE AND 3/4" I.P.

and I further certify that to perpetuate the location of said corner, I did, at the exact location thereof, place a permanent marker consisting of CAST IRON MON.

which reference or witness monuments are located in the manner following:

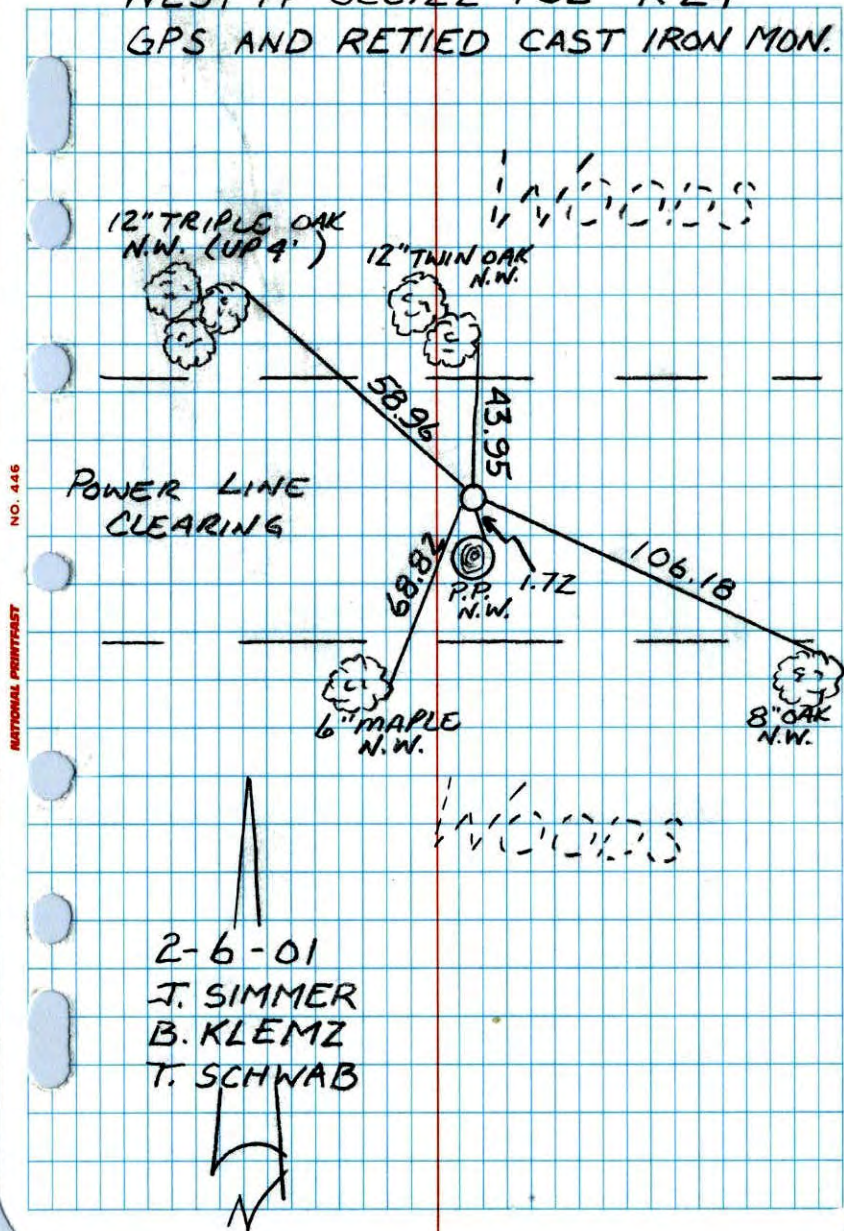


Revised date	Revised date	Revised date
8-12-88		
7-21-93		
2-6-01		

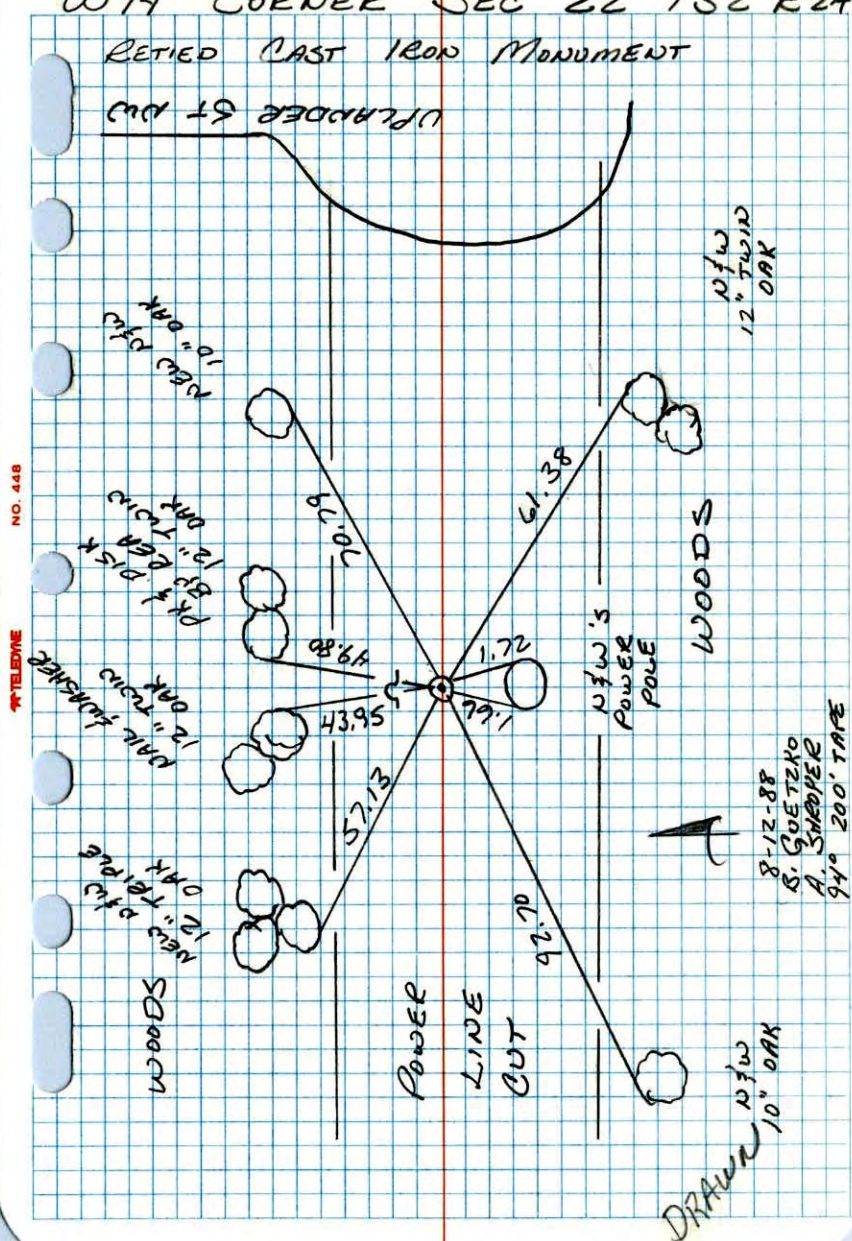




WEST 1/4 SEC. 22 T32 R24  
GPS AND RETIED CAST IRON MON.



W 1/4 CORNER SEC 22 T32 R24  
RETIED CAST IRON MONUMENT





# W 1/4 Cor. Sec. 22-T32-R24

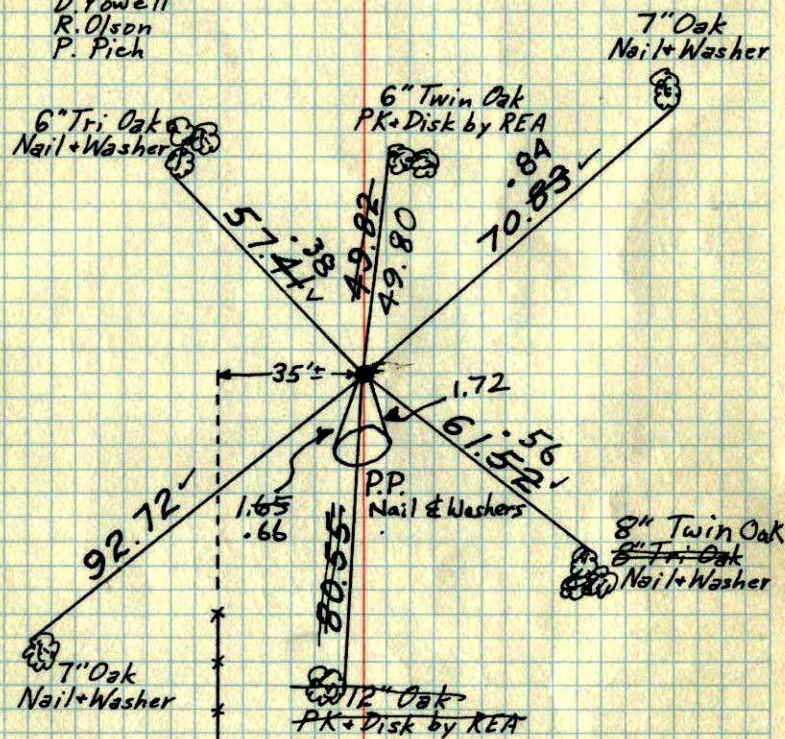
Removed 3"x5" Field Stone and 3/4" Iron Pipe.

Replaced with Cast Iron Monument up 0.1'±  
Down 0.2'±

Found and reset from REA's ties.

August 5, 1968

D. Powell  
R. Olson  
P. Pich



TIE CHECK  
6-5-76  
G. ADAMS  
O. ORNL  
B. SANDERUD

TIE CHECK  
6-6-79  
B. STEPHEN  
D. STEPHENS  
D. VAGLAK

TIE CHECK  
6-20-82  
P. ROSS  
P. AORNBY  
J. BEIER

TEMPERATURE CORRECTED  
AND HORIZONTALLY  
TAPED MEASUREMENTS

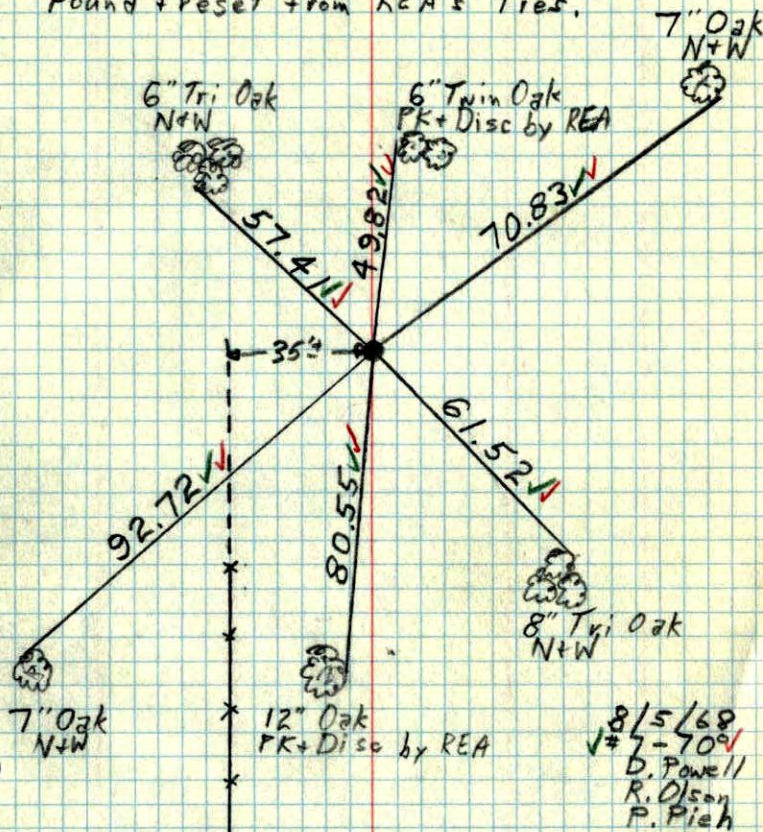
ROLAND W. ANDERSON  
COUNTY SURVEYOR  
ANOKA COUNTY, MINNESOTA

# W 1/4 Cor. Sec. 22-T32-R24

Removed Stone 3"x5" and 3/4" Iron Pipe

Replaced with C.I. Mon. up 0.1'±.

Found + reset from REA's ties.



8/5/68  
D. Powell  
R. Olson  
P. Pich



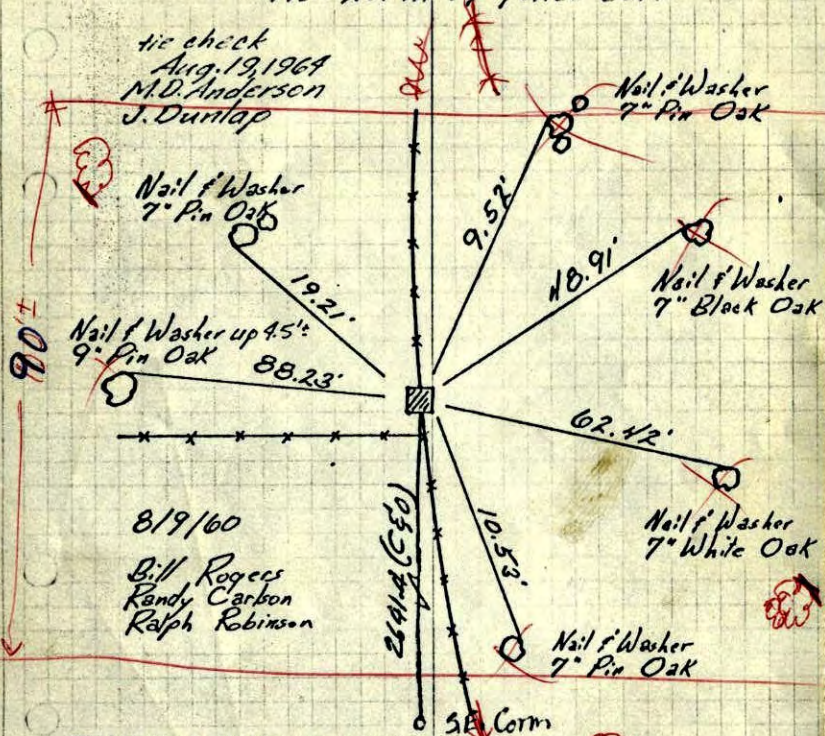
W 1/4 Cor. Sec 22-T32-R24

Stone Flush (see note)

Iron Pipe 0.20' South of Center of Stone

Notes: the cor. stone is a 3"x5" field stone 1 1/2' north of fence cor.

tie check Aug. 19, 1964 M.D. Anderson J. Dunlap



8/19/60 Bill Rogers Randy Carbon Ralph Robinson

TEMPERATURE CORRECTED AND HORIZONTALLY TAPED MEASUREMENTS

All ties & Fences gone. Could not find stone

ROLAND W. ANDERSON COUNTY SURVEYOR ANOKA COUNTY, MINNESOTA

7/24/68 D. Powell P. Pich

Found 1" Iron Pipe with pin in end as shown

PK + 1/2" disk



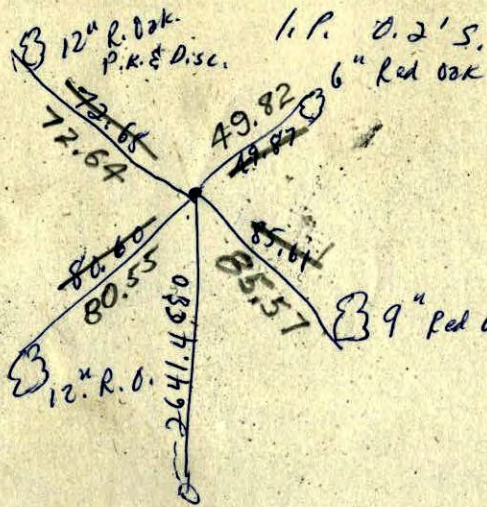
W 1/4 Corn. Sec. 22, 32-24

E.C. Bather & Assoc

1-23-68

Stone Flush

3" x 5"



1.1 P. 0.2' S.



65

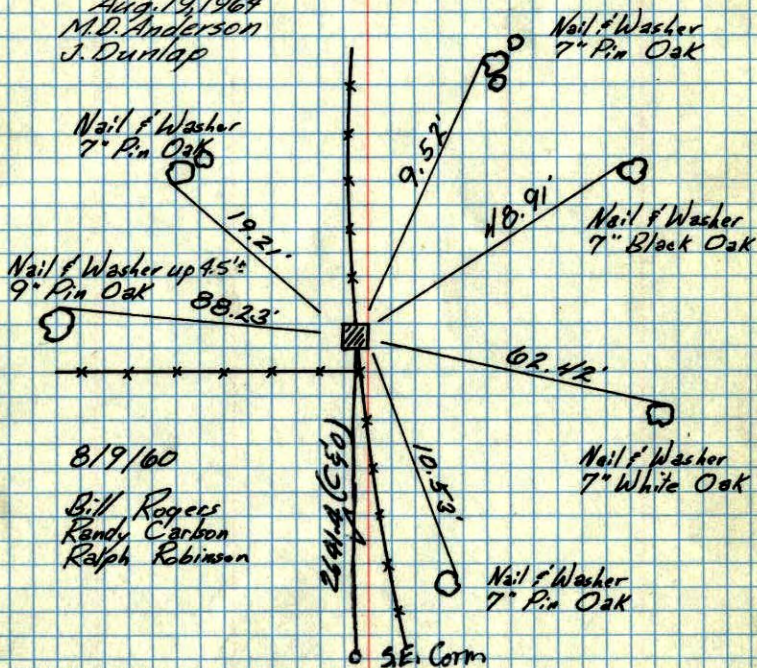
W 1/4 Cor. Sec. 22-T32-R24

Stone Flush (see note)

Iron Pipe 0.20' South  
of Center of Stone

Note:  
the cor. stone is a 3"x5" field stone  
1 1/2' north of fence cor.

tie check  
Aug. 19, 1964  
M.D. Anderson  
J. Dunlap



8/19/60  
Bill Rogers  
Randy Carlson  
Ralph Robinson

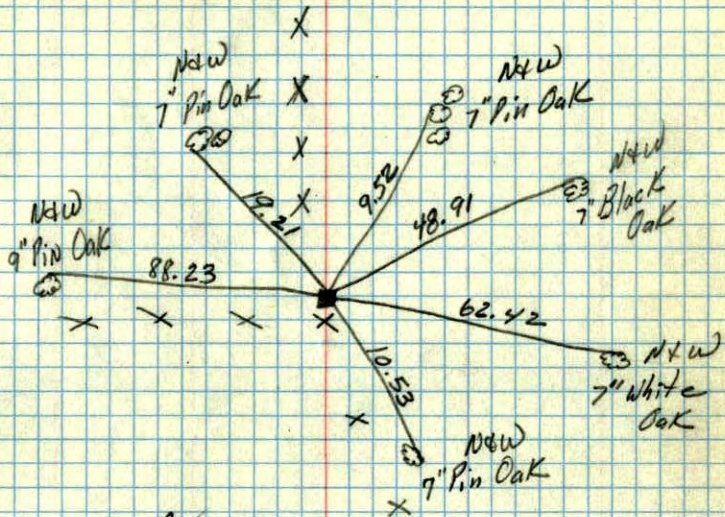
TEMPERATURE CORRECTED  
AND HORIZONTALLY  
TAPED MEASUREMENTS

ROLAND W. ANDERSON  
COUNTY SURVEYOR  
ANOKA COUNTY, MINNESOTA

W 1/4 Cor. Sec. 22 T32 R24

Stone Flush

Iron Pipe 0.20 South of Center of Stone



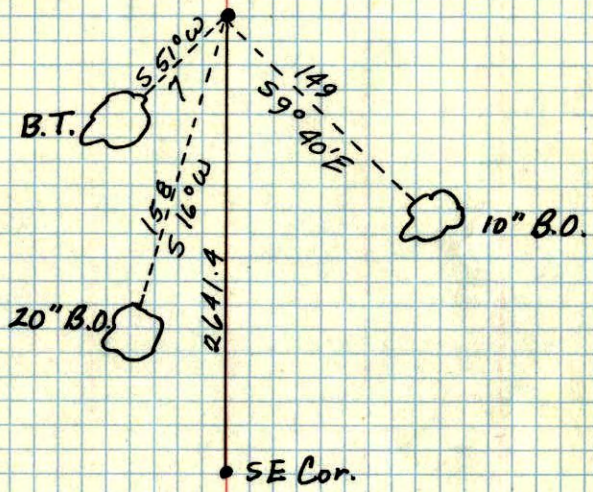
8/19/60

TC  
temp. 76°  
8/9/60  
Bill Rogers  
Randy Carlson  
Ralph Robinson



1 15  
W 1/4 Sec. 22 T 32 R 24

Iron'  
Stone on S. Side



N.C.H.