

CERTIFICATE OF LOCATION OF GOVERNMENT CORNER

County of Anoka

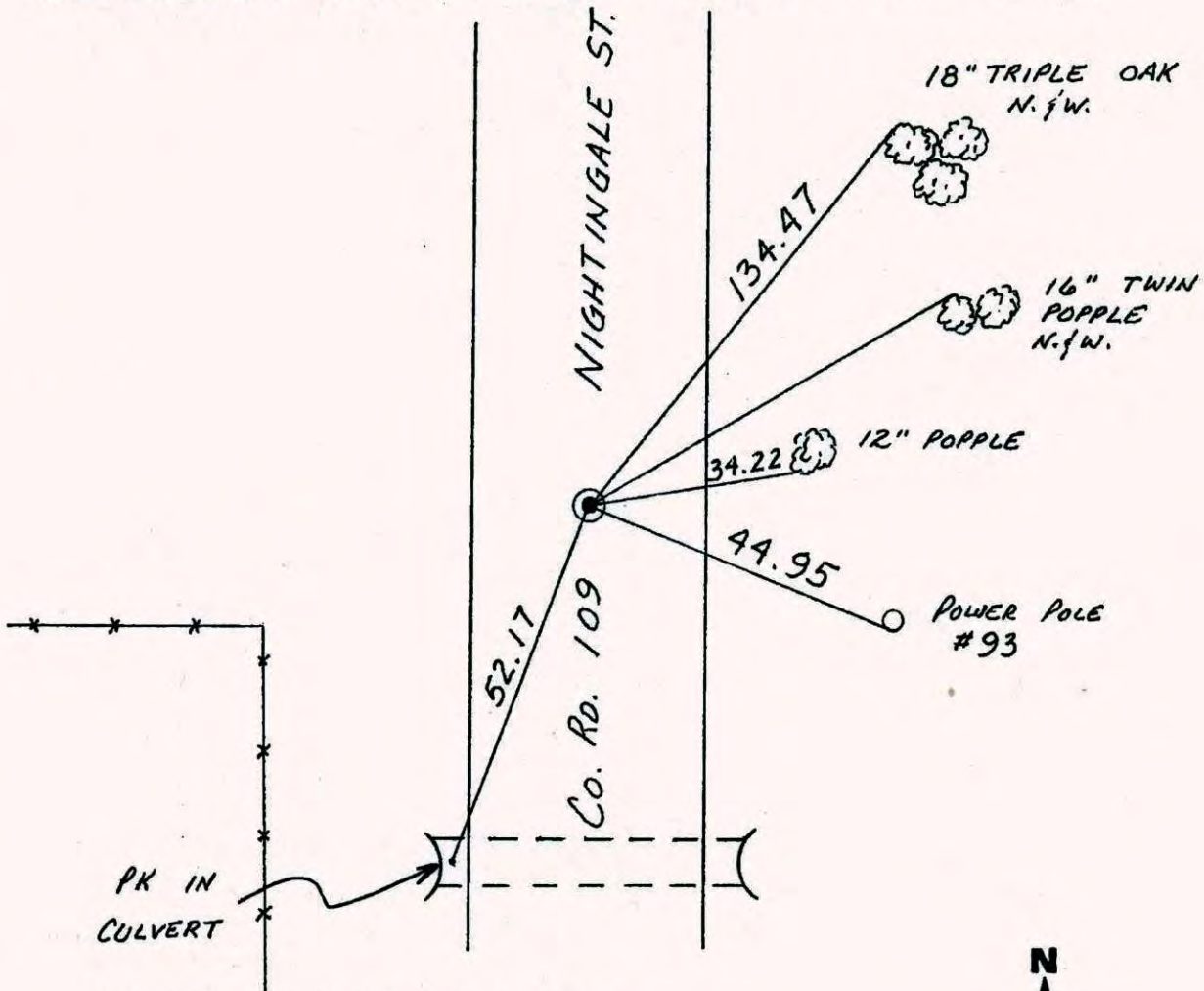
State of Minnesota

CENTER Corner of Sec. 22 Township 32 Range 24

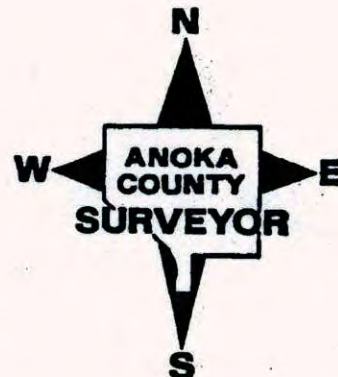
I hereby certify that on the 9 day of SEPT., 1960, I found the described corner which was evidenced by PINCHED I. P.

and I further certify that to perpetuate the location of said corner, I did, at the exact location thereof, place a permanent marker consisting of CAST IRON MON.

which reference or witness monuments are located in the manner following:

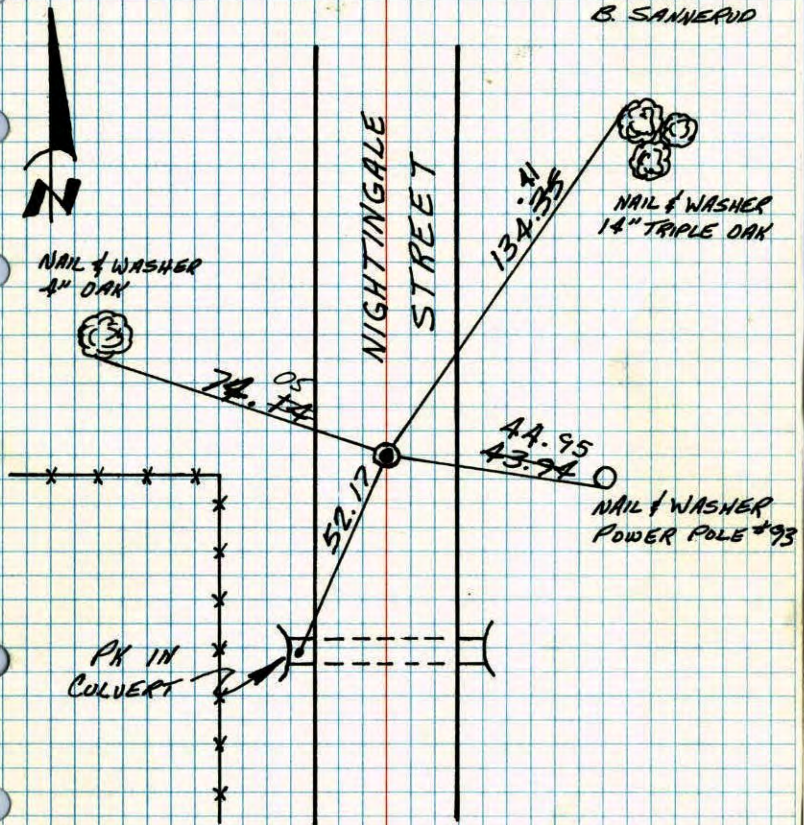


Revised date	Revised date	Revised date
6-25-82		
6-6-85		
7-29-88		



CENTER OF SEC. 22 - T32 - R24

SET EAST IRON MONUMENT FROM CONSTRUCTION TIES. RETIED CORNER. 6-4-76 GADAMS O. ORNL B. SANNERUD

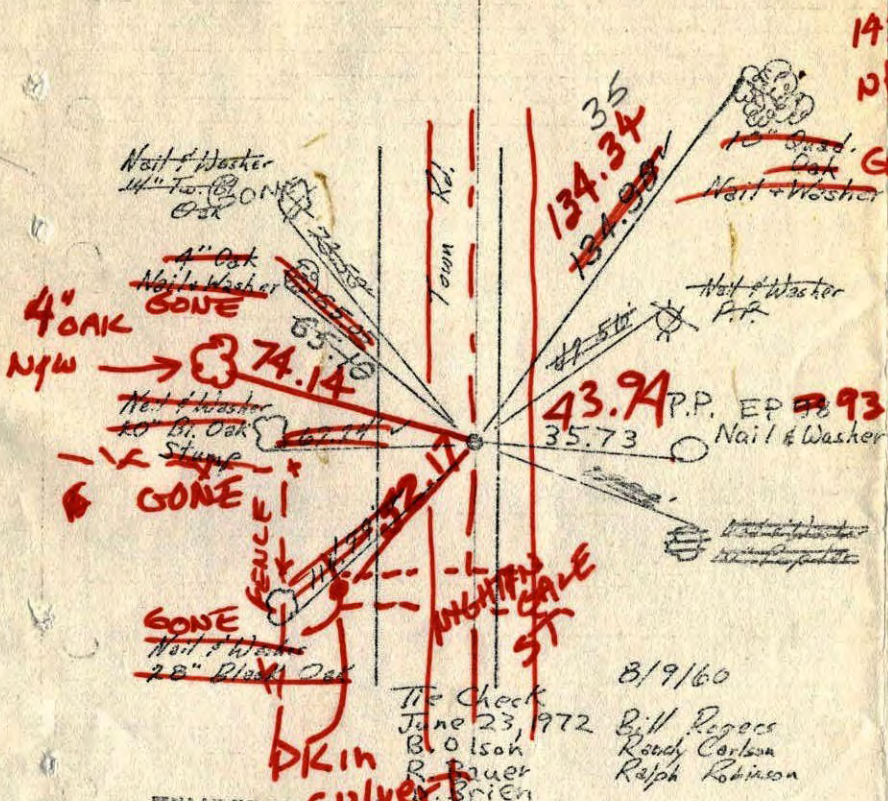


TIE CHECK	TIE CHECK
6-6-29	6-25-82
B. STEPHENS	P. ROSS
D. STEPHENS	P. HORNBY
D. NAGLAK	M. LICK

TEMPERATURE CORRECTED AND HORIZONTALLY TAPED MEASUREMENTS

Center Cor. Sec 22 - T32 - R24

Excavated Iron Pipe down 0.30'



8/9/60
 Tie Check
 June 23, 1972
 B. Olson
 R. Bauer
 P. Brien

TEMPERATURE CORRECTED AND HORIZONTALLY TAPED MEASUREMENTS

Tie Check
 July 15, 1968
 H. Larson
 G. Elsberry
 Aug. 27, 1968
 D. Powell
 R. Olson, P. Fick

tie check
 Aug. 19, 1969
 M. C. Anderson
 J. Dunlap

All remaining ties good

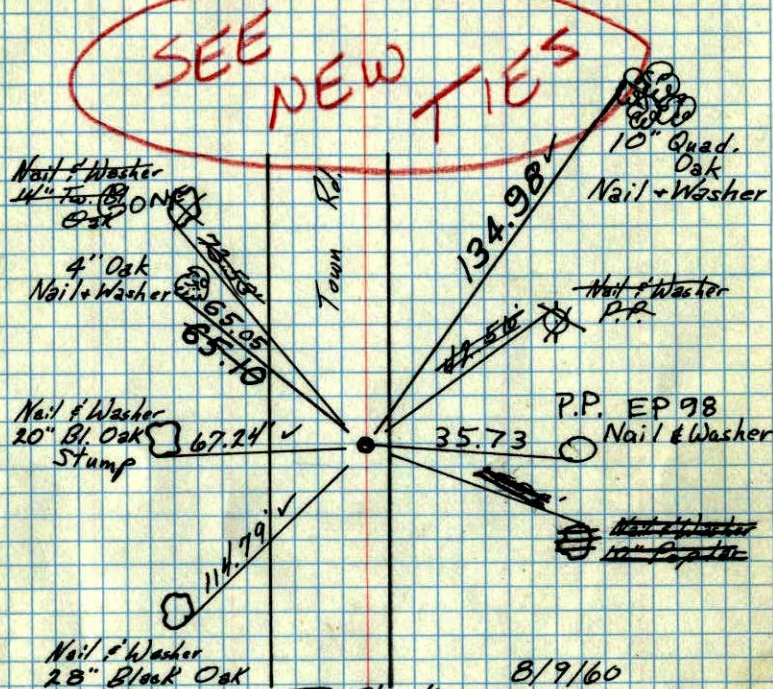
ROLAND W. ANDERSON COUNTY SURVEYOR ANOKA COUNTY, MINNESOTA

14" TRIPLE OAK NEW
 GONE
 SET C.I. A CONSTRUCTION TIES RETIED CORNER. TIE CHECK 6-4-76 G.A. B.S. D.D. T-84" TAPE 112

Center Cor. Sec 22-T32-R24

~~Pinched~~ Iron Pipe

down 0.30'

Nail & Washer
14" Twin Black Oak4" Oak
Nail & WasherNail & Washer
20" Bl. Oak
StumpNail & Washer
28" Black Oak10" Quad.
Oak

Nail & Washer

Nail & Washer
P.P.

P.P. EP 98

Nail & Washer

~~Nail & Washer~~
~~10" Poplar~~

8/9/60

Tie Check

June 23, 1972

B. Olson

R. Bauer

D. Brien

Bill Rogers

Randy Carlson

Ralph Robinson

TEMPERATURE CORRECTED

AND HORIZONTALLY

TAPED MEASUREMENTS.

Tie check

Aug. 19, 1964

M. O. Anderson

J. Dunlap

Tie Check
July 15, 1968

H. Larson

G. Elsberry

Aug. 27, 1968

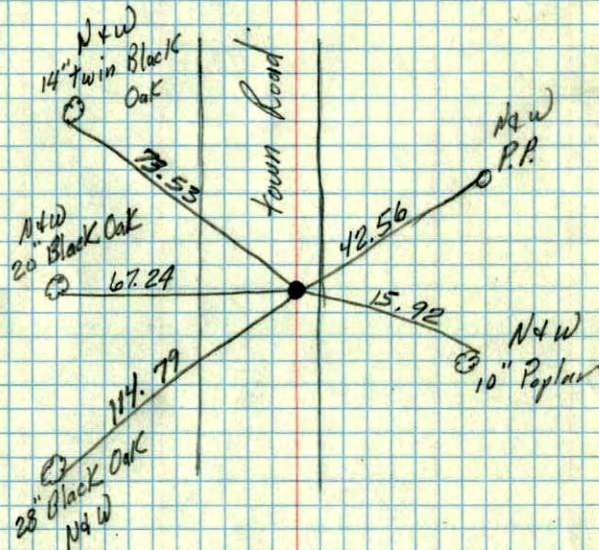
D. Powell

R. Olson, P. Pich

All remaining ties goodROLAND W. ANDERSON
COUNTY SURVEYOR
ANOKA COUNTY, MINNESOTA

Center Sec 22 T32 R24

Pinched Iron Pipe down 0.30

N+W
14" Twin Black
OakN+W
20" Black Oak28" Black Oak
N+W

Town Road

N+W
P.P.N+W
10" Poplar

19/9/60

TC

Temp. 76°

8/9/60

Bill Rogers

Ralph Robinson

Randy Carlson