

# CERTIFICATE OF LOCATION OF GOVERNMENT CORNER

County of Anoka                      State of Minnesota

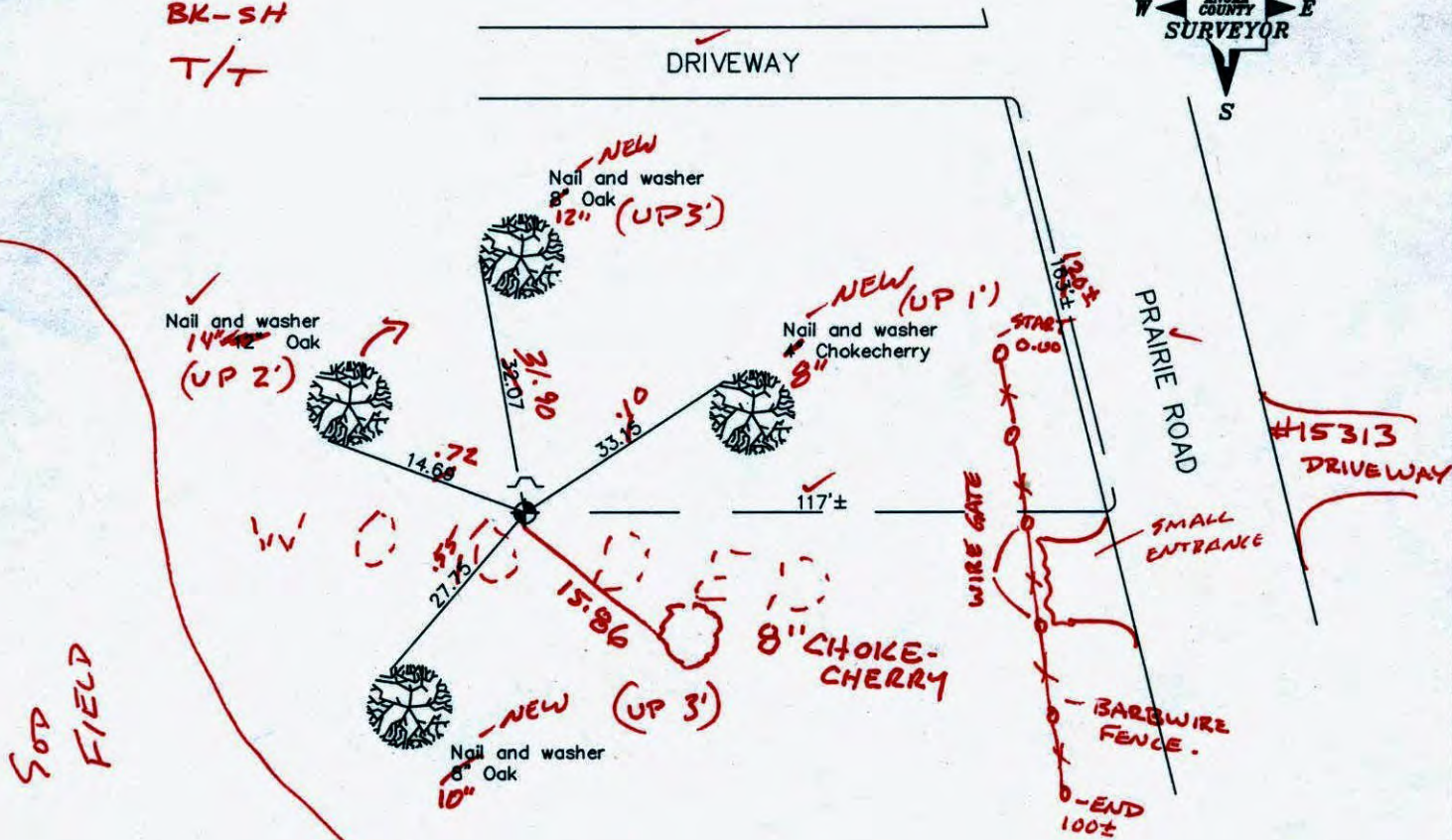
West 1/4 Corner of Sec. 24 Township 32 Range 24

I hereby certify that on the 28th day of June, 1962, I found the described corner which was evidenced by area resurvey

and I further certify that to perpetuate the location of said corner, I did, at the exact location thereof, place a permanent marker consisting of a cast iron monument with sign and post on the north side (UP 0.1)

which reference or witness monuments are located in the manner following:

10/25/10  
BK-SH  
T/T



Revised date

8/2/88
7/22/93
2/1/01

N.A.D. 1983 Co-ordinates

County Project Co-ordinates
Northing 177497.4796
Easting 495132.8706

State Plane Co-ordinates
Y _____
X _____

Date 2/1/01

# CERTIFICATE OF LOCATION OF GOVERNMENT CORNER

County of Anoka

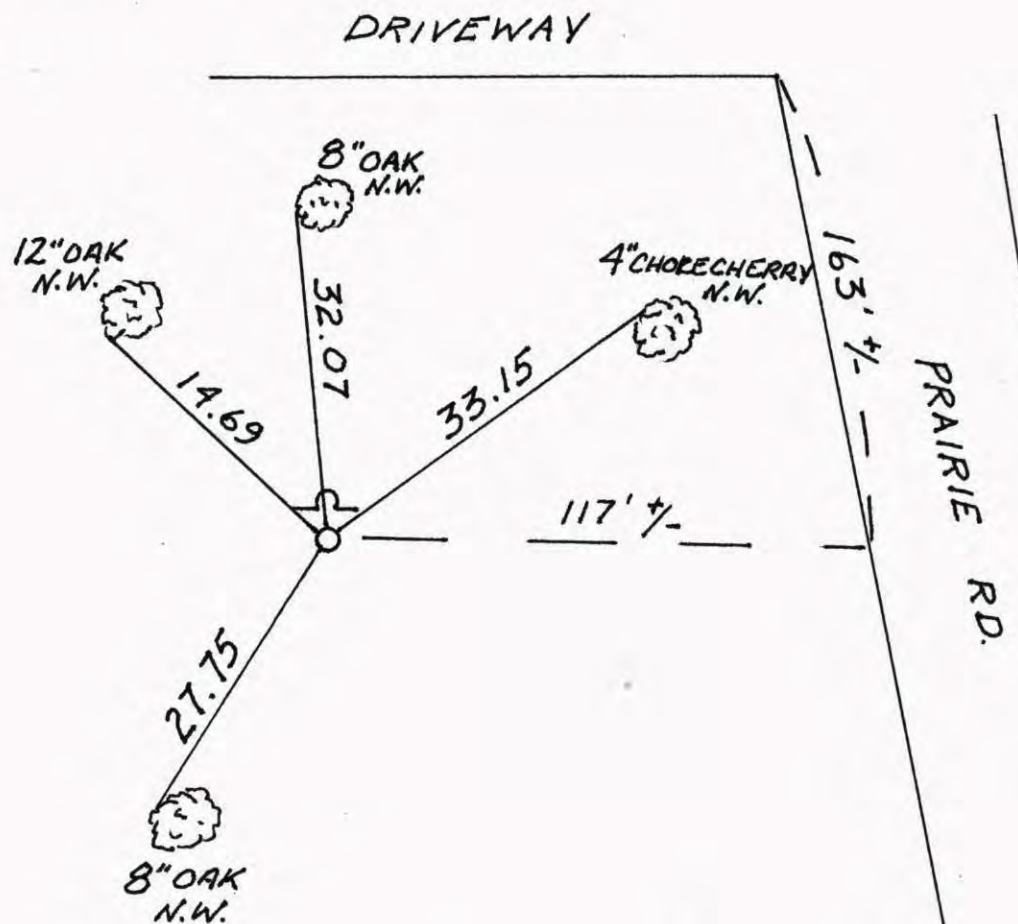
State of Minnesota

WEST 1/4 Corner of Sec. 24 Township 32 Range 24

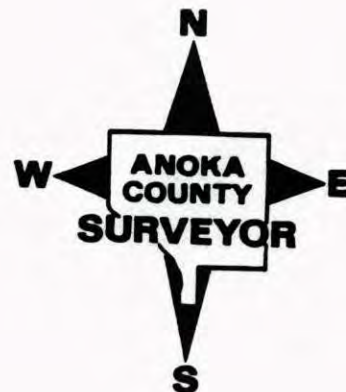
I hereby certify that on the 28 day of JUNE, 1962, I found the described corner which was evidenced by AREA RESURVEY

and I further certify that to perpetuate the location of said corner, I did, at the exact location thereof, place a permanent marker consisting of CAST IRON MON. SIGN AND POST ON NORTH

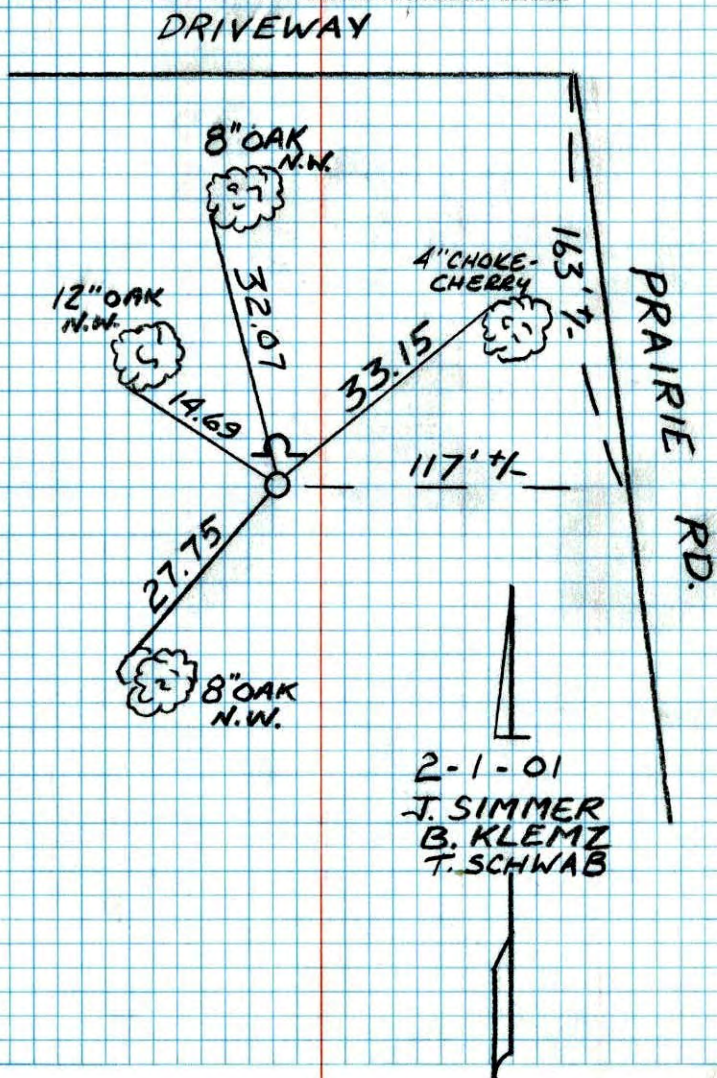
which reference or witness monuments are located in the manner following:



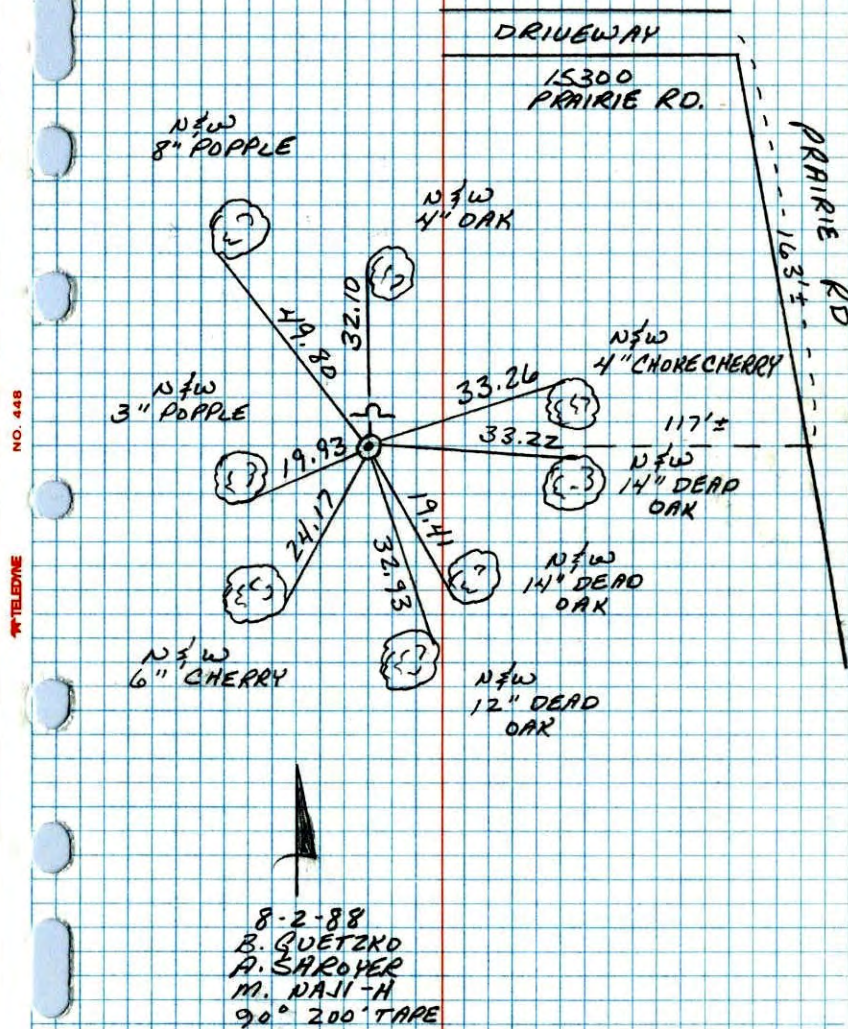
Revised date	Revised date	Revised date
6-4-85		
8-2-88		
7-22-93		
2-1-01		



WEST 1/4 SEC. 24 T32 R24  
 RETIED AND GPS CAST IRON MON.  
 SIGN AND POST TO NORTH

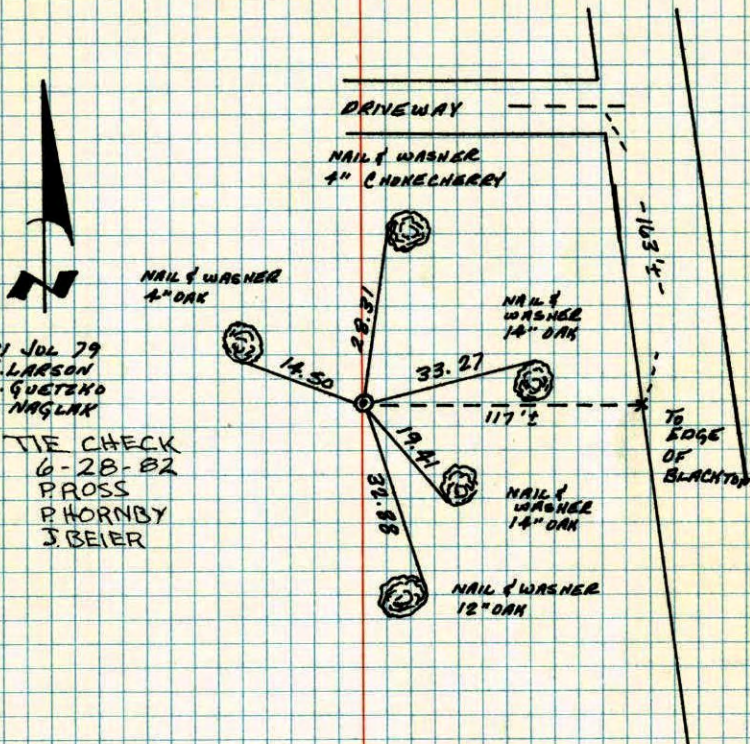


W 1/4 CORNER SEC 24 T32 R24  
 RETIED CAST IRON MONUMENT



## W 1/4 CORNER SECTION 24-T32-R24

RETIRED CAST IRON MONUMENT SET FROM AREA RESURVEY. SIGN AND POST ON NORTH SIDE.

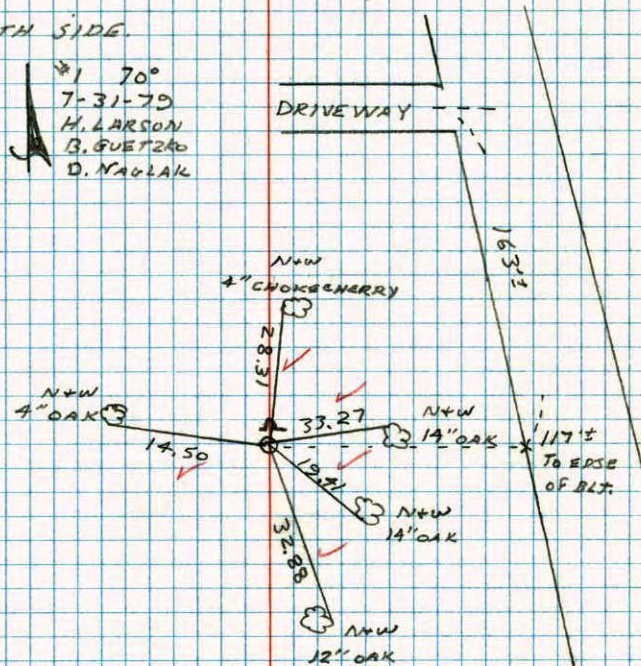


TEMPERATURE CORRECTED  
AND HORIZONTALLY  
TAPED MEASUREMENTS

ROLAND W. ANDERSON  
COUNTY SURVEYOR  
ANOKA COUNTY, MINNESOTA

## W 1/4 COR. SECTION 24 T32 R24

RETIRED CAST IRON MONUMENT SET  
FROM AREA RESURVEY. SIGN + POST ON  
NORTH SIDE.

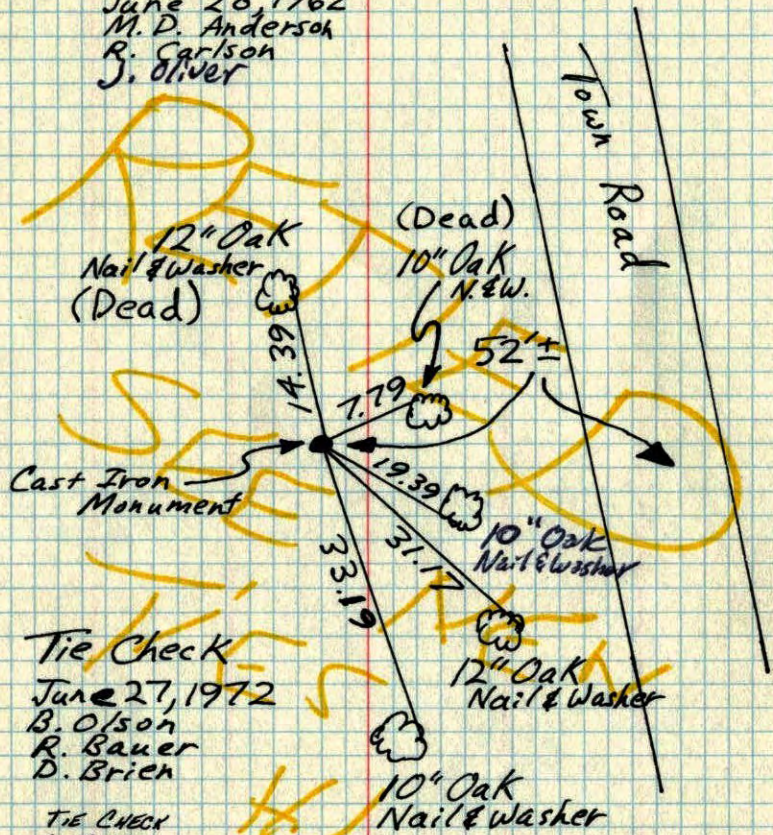


# W 1/4 Cor. Sec. 24-32-24

Set Cast Iron Mon. from resurvey.

Mon. up 0.2' I.

June 28, 1962  
M. D. Anderson  
R. Carlson  
J. Oliver



Tie Check  
June 27, 1972  
B. Olson  
R. Bauer  
D. Brien

TIE CHECK  
6-4-76  
G. ADAMS  
O. ORHL  
B. SANDBROD

TEMPERATURE CORRECTED  
AND HORIZONTALLY  
TAPED MEASUREMENTS

ROLAND W. ANDERSON  
COUNTY SURVEYOR  
ANOKA COUNTY, MINNESOTA

# W 1/4 Cor. Sec. 24-32-24

Set Cast Iron from Resurvey up 0.2'

June 28, 1962

J. Oliver  
M. D. Anderson  
R. Carlson

tie check  
Aug. 19, 1964  
M. D. Anderson  
J. Dunlap  
All ties good

12" Oak  
Nail &  
Washer  
**(Dead)**  
Cast Iron Monument

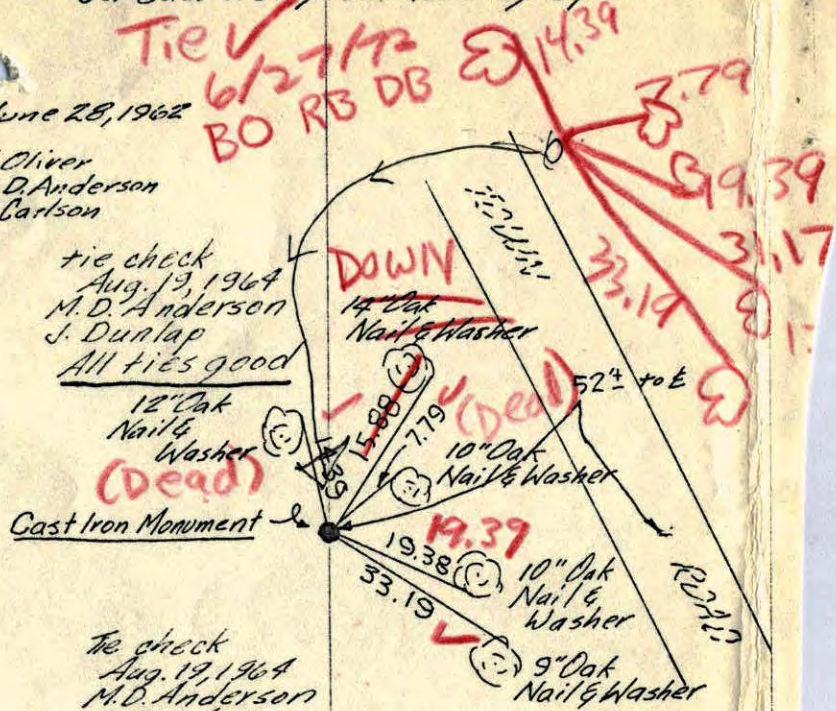
Tie check  
Aug. 19, 1964  
M. D. Anderson  
J. Dunlap  
All ties good

All ties good

Tie Check  
July 15, 1968  
H. Larson  
G. Elsberry

ROLAND W. ANDERSON  
COUNTY SURVEYOR  
ANOKA COUNTY, MINNESOTA

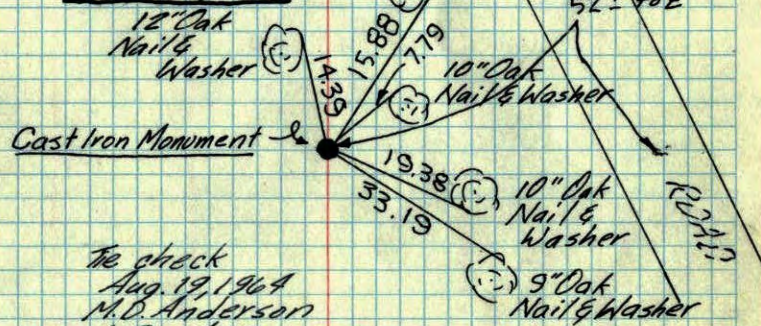
TEMPERATURE CORRECTED  
AND HORIZONTALLY  
TAPED MEASUREMENTS



W 1/4 Cor. Sec. 24-32-24

Set Cast Iron from Resurvey up D. 2'

June 28, 1962

J. Oliver  
M. D. Anderson  
R. Carlsontie check  
Aug. 19, 1964  
M. D. Anderson  
J. Dunlap  
All ties goodtie check  
Aug. 19, 1964  
M. D. Anderson  
J. DunlapAll ties goodTie Check  
July 15, 1968  
H. Larson  
G. ElsberryROLAND W. ANDERSON  
COUNTY SURVEYOR  
ANOKA COUNTY, MINNESOTATEMPERATURE CORRECTED  
AND HORIZONTALLY  
TAPED MEASUREMENTS

W 1/4 Cor. Sec. 24 T32, R24

Set C.I. Mon. From Resurvey

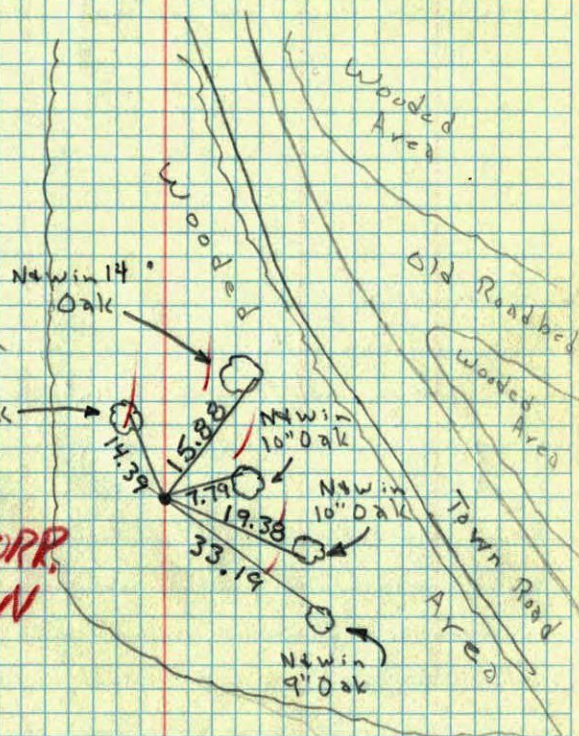
N

28 June 62

79°

J. Oliver  
M. D. Anderson  
R. Carlson

Nw in 12" Oak

TEMP. CORR.  
& DRAWNMon. is 52' ± West of  
Approx. E of Town Rd.