

CERTIFICATE OF LOCATION OF GOVERNMENT CORNER

County of Anoka

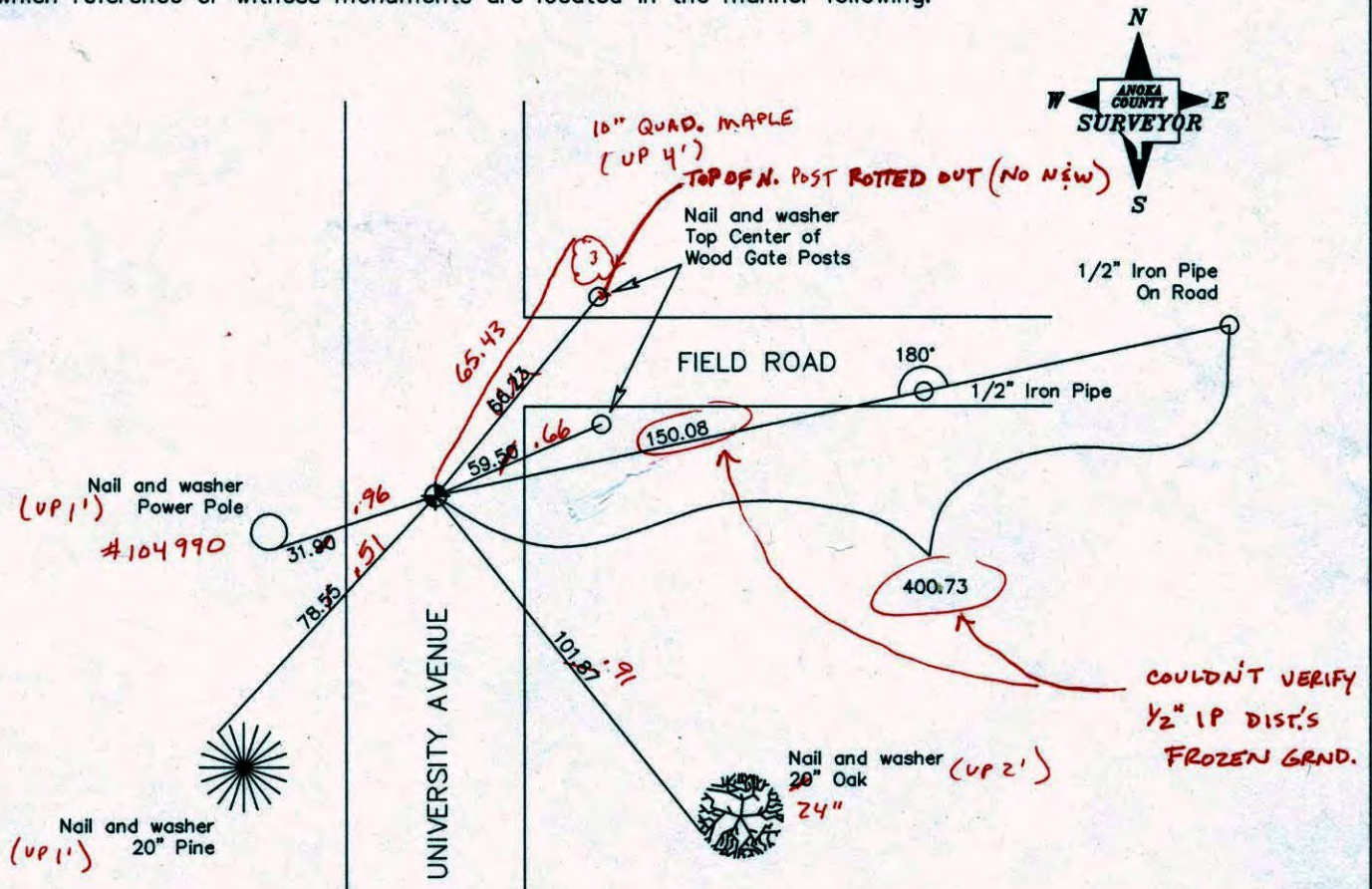
State of Minnesota

East 1/4 Corner of Sec. 24 Township 32 Range 24

I hereby certify that on the 17th day of July, 1962, I found the described corner which was evidenced by area resurvey

and I further certify that to perpetuate the location of said corner, I did, at the exact location thereof, place a permanent marker consisting of a cast iron monument ✓

which reference or witness monuments are located in the manner following:



Revised date

| |
|----------|
| 7/20/93 |
| 6/29/94 |
| 10/23/00 |
| |
| |

2-8-11
BK-SS
T/T

N.A.D. 1983 Co-ordinates

| County Project Co-ordinates | State Plane Co-ordinates |
|-----------------------------|--------------------------|
| Northing <u>177430.8100</u> | Y _____ |
| Easting <u>500332.4507</u> | X _____ |

Date 10/23/00

CERTIFICATE OF LOCATION OF GOVERNMENT CORNER

County of Anoka

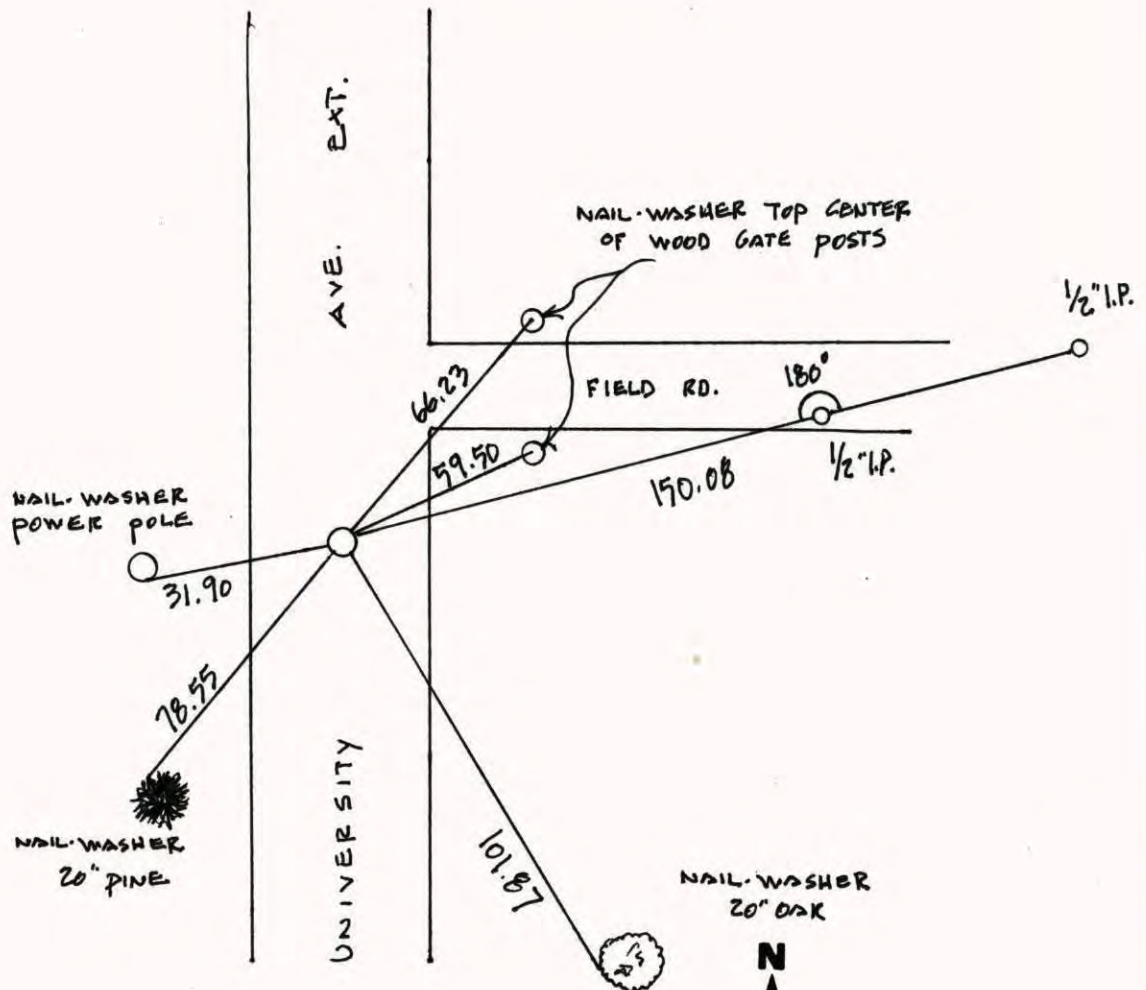
State of Minnesota

EAST 1/4 Corner of Sec. 24 Township 32 Range 24

I hereby certify that on the 17TH day of JULY, 1962, I found the described corner which was evidenced by AREA RESURVEY

and I further certify that to perpetuate the location of said corner, I did, at the exact location thereof, place a permanent marker consisting of CAST IRON MONUMENT

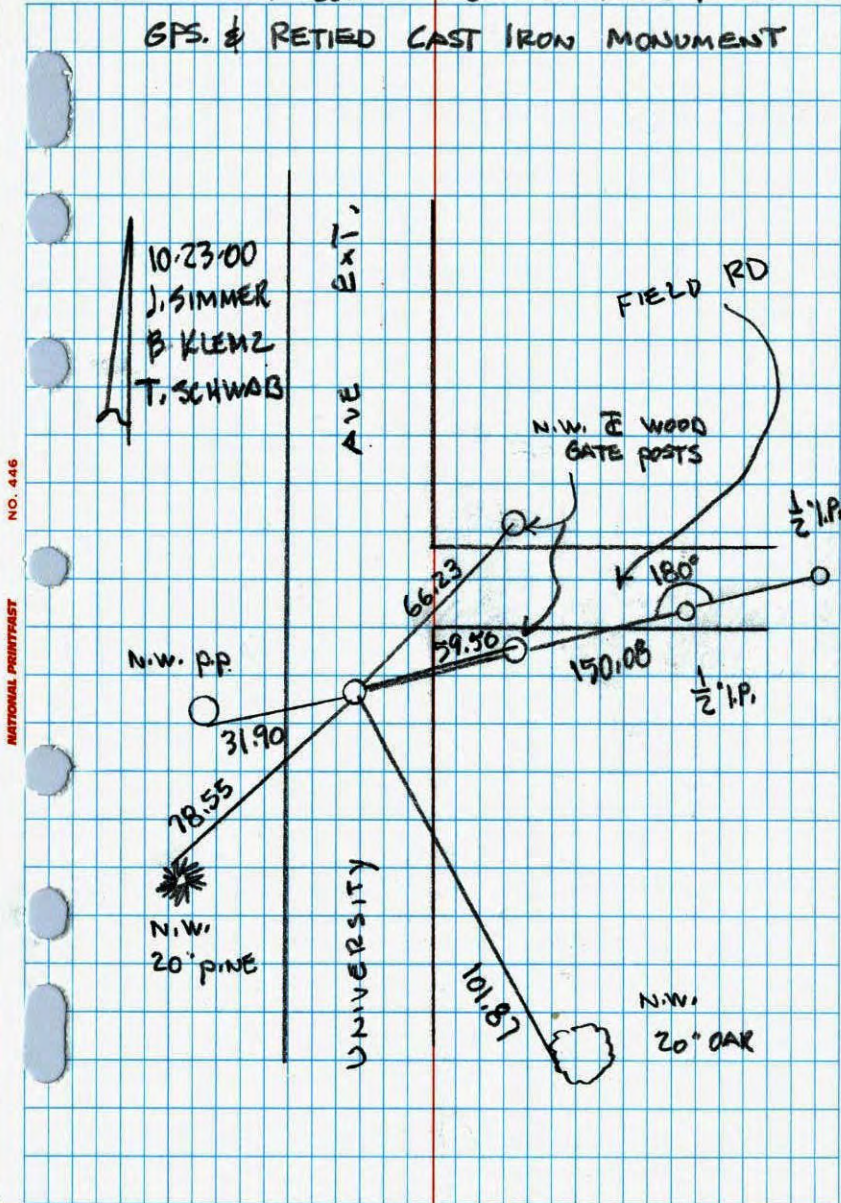
which reference or witness monuments are located in the manner following:



| Revised date | Revised date | Revised date |
|--------------|--------------|--------------|
| 6-4-85 | | |
| 8-2-88 | | |
| 7-20-93 | | |
| 6-29-94 | | |
| 10-23-00 | | |
| | | |
| | | |



EAST 1/4 COR. SEC 24 T 32 R 24
GPS. & RETIED CAST IRON MONUMENT

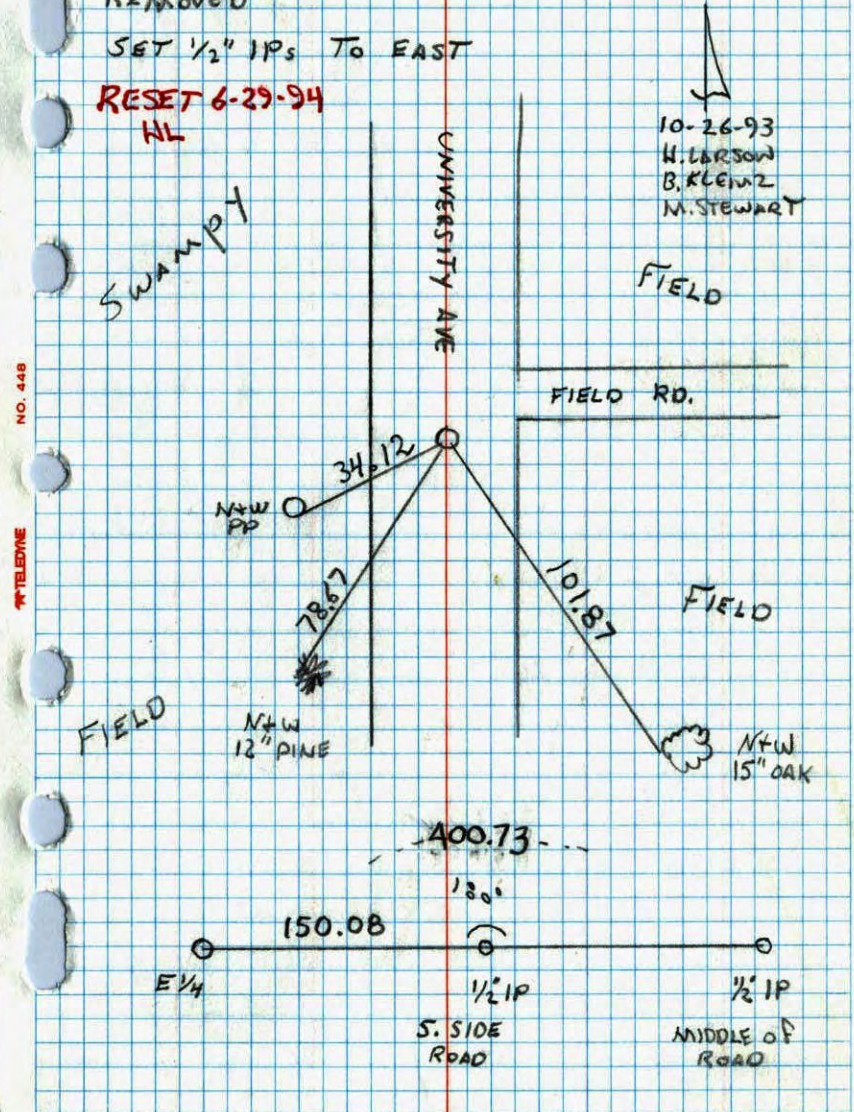


NO. 446 NATIONAL PRINTING

E 1/4 CORNER SECTION 24 T 32 R 24
RETIED CAST IRON FOR CONSTRUCTION
REMOVED

SET 1/2" IPS TO EAST

RESET 6-29-94
HL

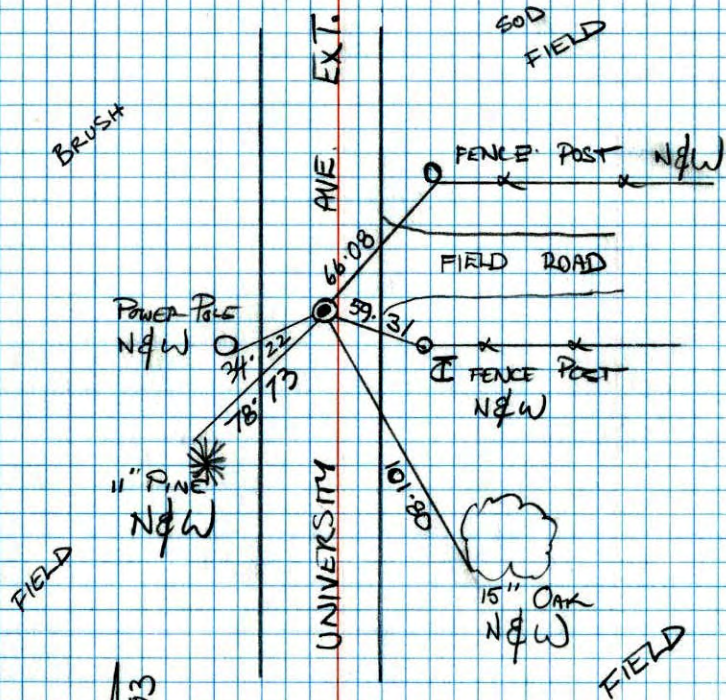


NO. 448 TELETYPE

10-26-93
H. LARSON
B. KLENZ
M. STEWART

EAST 1/4 SEC 24 T32 R24

RETRIEVED CAST IRON MONUMENT

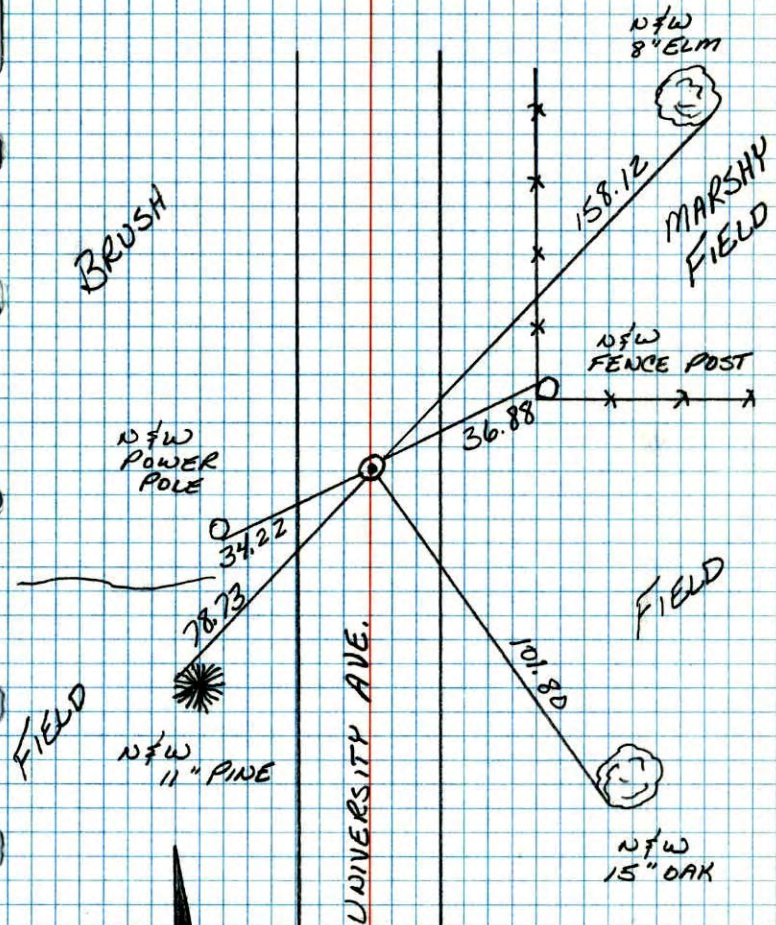


7-20-93

JAMIE ANDERSON
JOSH ANDERSON

E 1/4 CORNER SEC 24 T32 R24

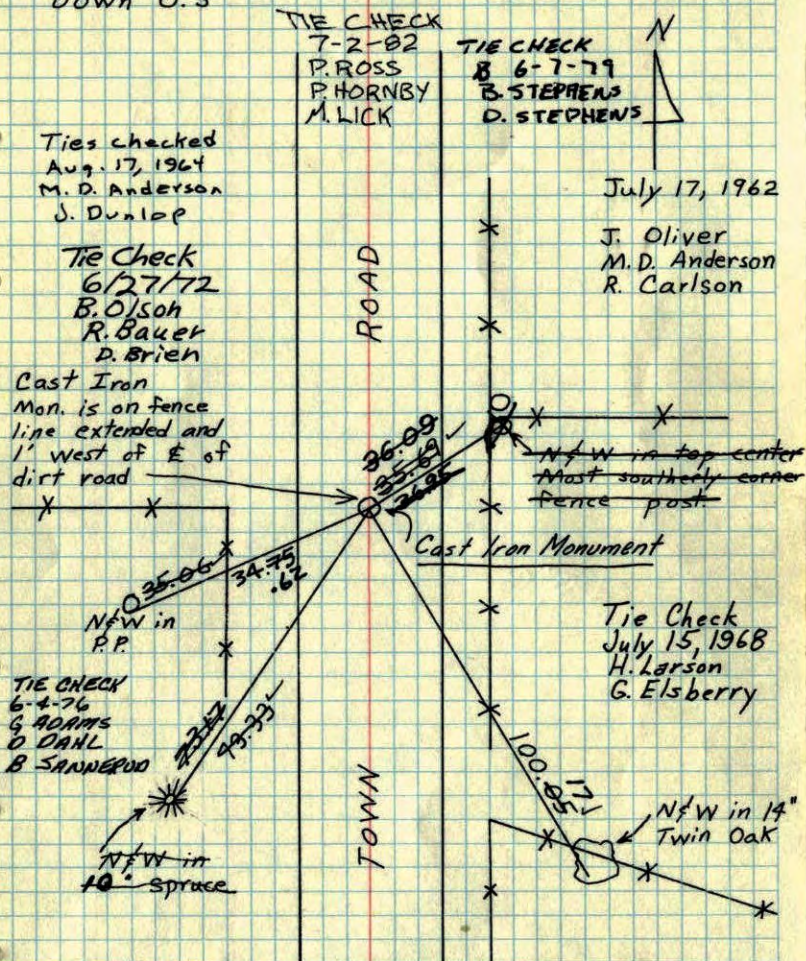
RETRIEVED CAST IRON MONUMENT



8-2-88
B. GUETZKO
J. STEVENSON
A. SHROYER
M. WASH-H
92° 200' TAPE

DRAWN

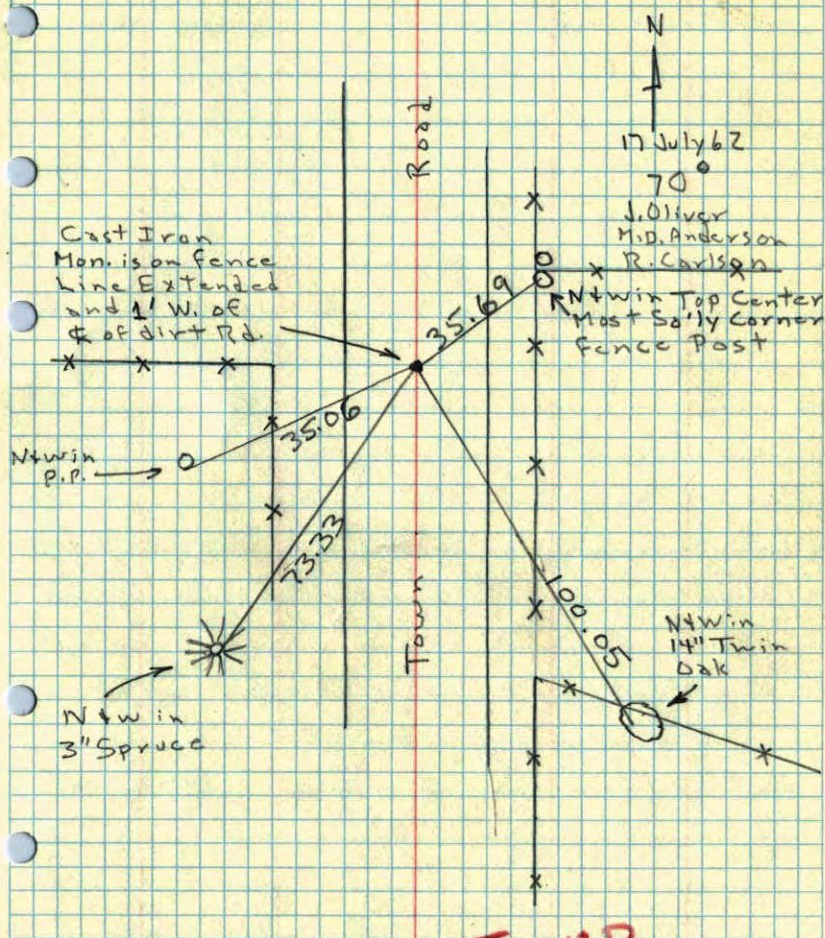
E 1/4 Cor. Sec. 24, T32, R24

Set Cast Iron Monument from Resurvey,
Down 0.5'

ROLAND W. ANDERSON TEMPERATURE CORRECTED
COUNTY SURVEYOR AND HORIZONTALLY
ANOKA COUNTY, MINNESOTA TAPED MEASUREMENTS

E 1/4 Cor. Sec. 24, T32, R24

Set C.I. Mon. From Resurvey down 0.5'



TEMP
CORR