

# CERTIFICATE OF LOCATION OF GOVERNMENT CORNER

County of Anoka

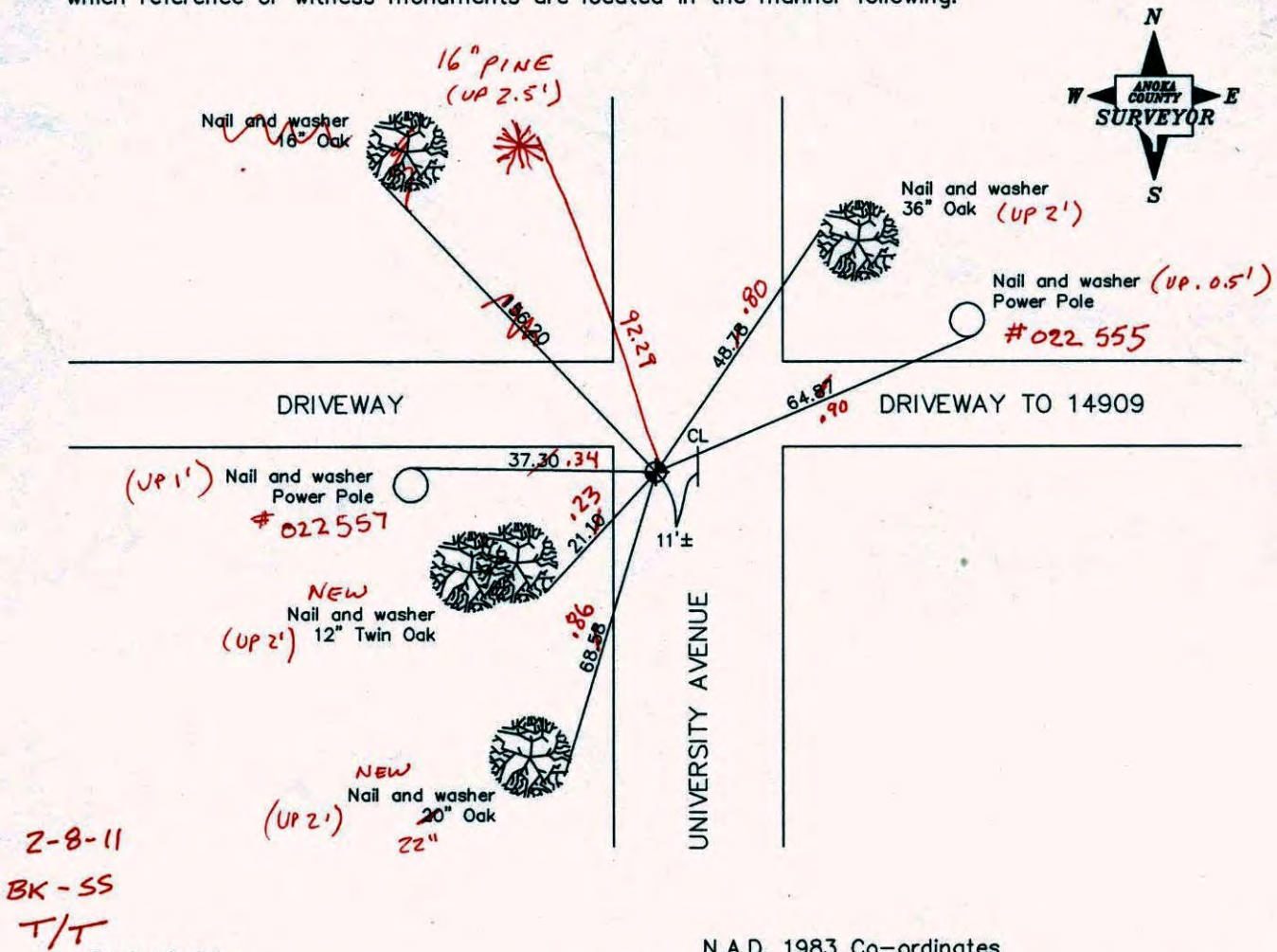
State of Minnesota

## Southeast Corner of Sec. 24 Township 32 Range 24

I hereby certify that on the 17th day of July, 1962, I found the described corner which was evidenced by area resurvey

and I further certify that to perpetuate the location of said corner, I did, at the exact location thereof, place a permanent marker consisting of a cast iron monument ✓

which reference or witness monuments are located in the manner following:



2-8-11  
BK-SS  
T/T

Revised date

6/4/88
11/2/93
10/24/00

N.A.D. 1983 Co-ordinates

County Project Co-ordinates	State Plane Co-ordinates
Northing <u>174802.0013</u>	Y _____
Easting <u>500310.8210</u>	X _____

Date 10/24/00



# CERTIFICATE OF LOCATION OF GOVERNMENT CORNER

County of Anoka

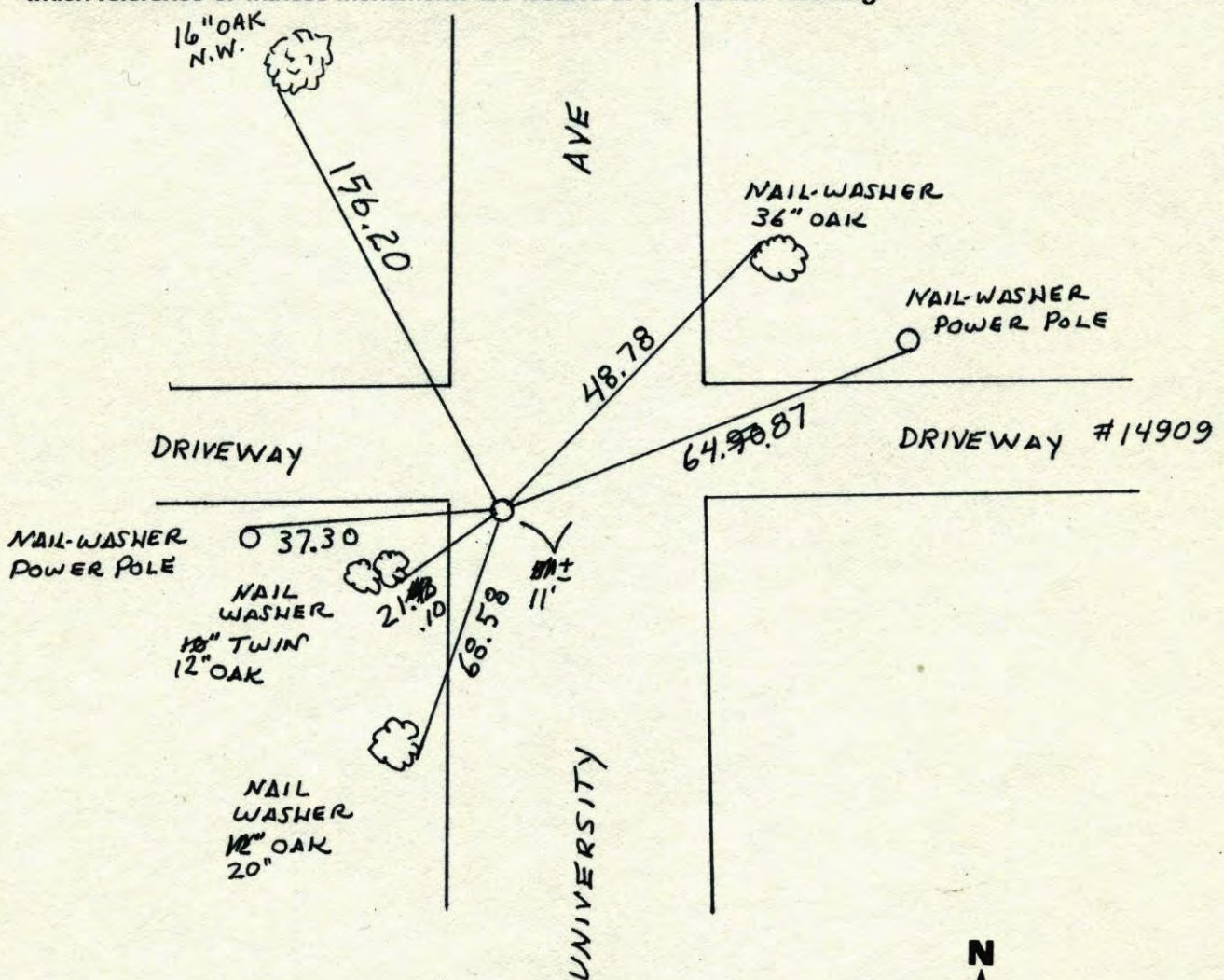
State of Minnesota

SOUTHEAST Corner of Sec. 24 Township 32 Range 24

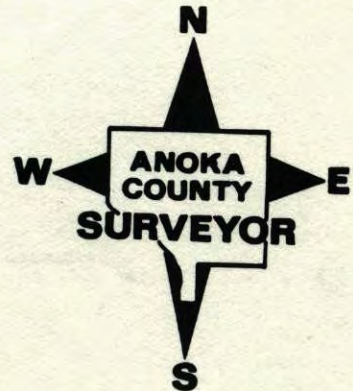
I hereby certify that on the 17<sup>th</sup> day of JULY, 1962, I found the described corner which was evidenced by AREA RESURVEY

and I further certify that to perpetuate the location of said corner, I did, at the exact location thereof, place a permanent marker consisting of CAST IRON MONUMENT

which reference or witness monuments are located in the manner following:



Revised date	Revised date	Revised date
6-4-85		
6-4-88		
11-2-93		
10-24-00		



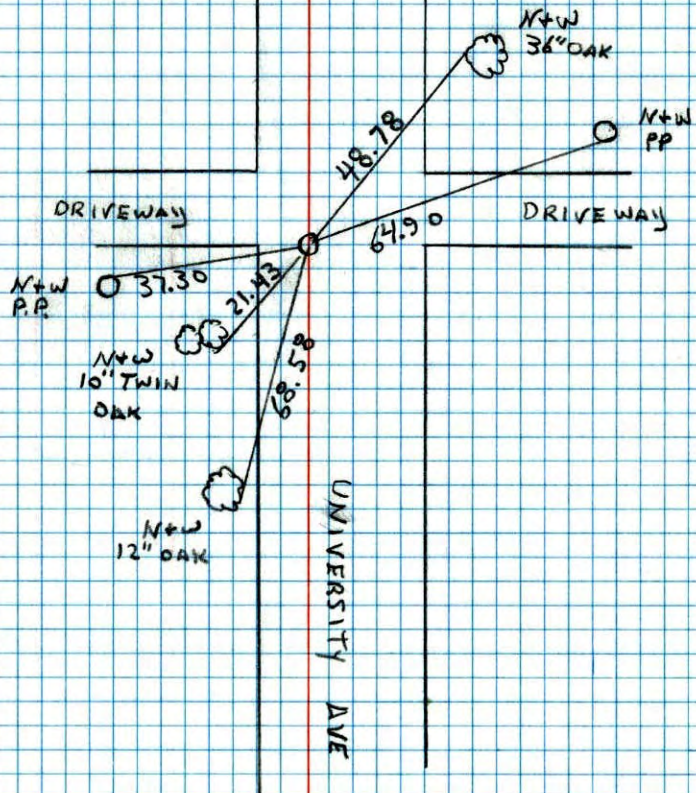


SOUTHEAST COR. SECTION 24 T32 R24

RAISED AND RETIED CASTIRON MANHOLE.

11-2-93

H. LARSEN  
B. KLEWZ  
M. STEWART



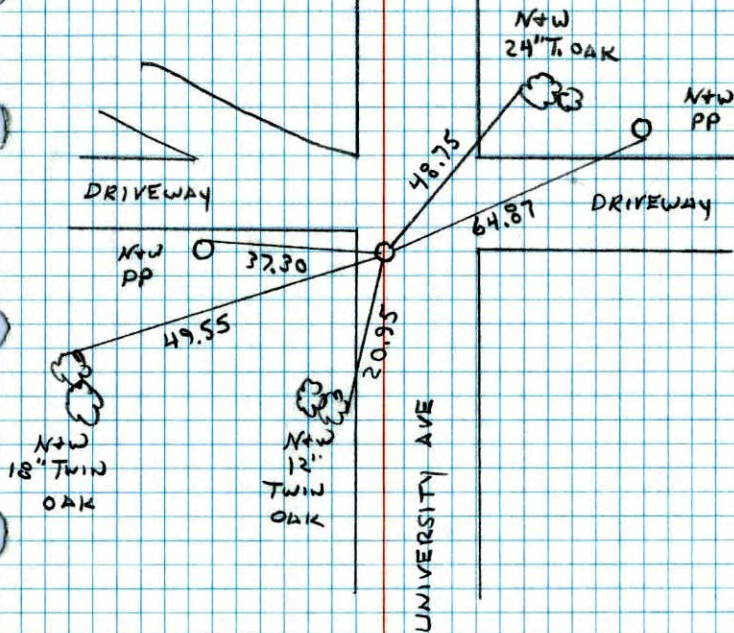
NO. 448

TELEPHONE

SECOR SEC 24 T32 R24

RETIED CASTIRON

7-19-93  
3A  
3A



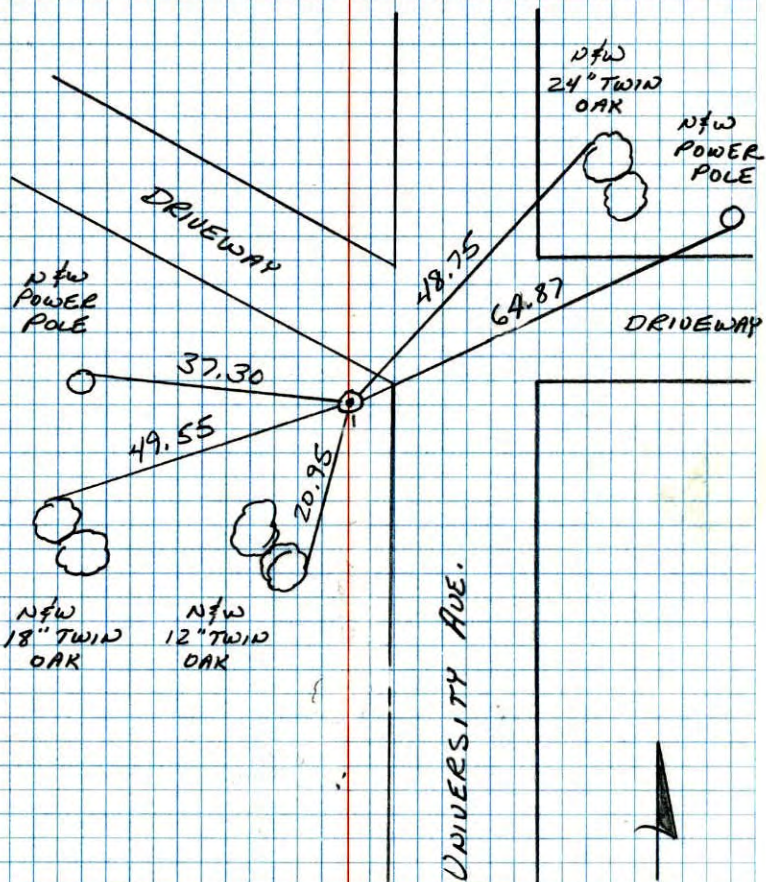
NO. 448

TELEPHONE



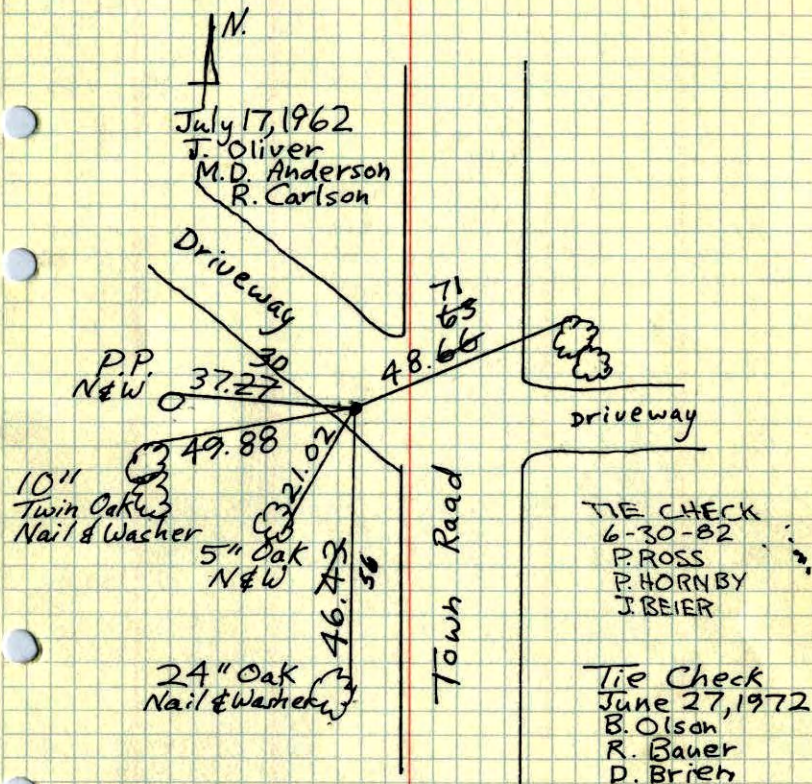
SOUTHEAST CORNER SEC 24 T32 R24

RETIRED CAST IRON MONUMENT.



8-4-88  
 B. GUETZKO  
 A. SHROYER  
 M. NAJJI-N  
 75° 200' TAPE

SE Cor. Sec. 24 - T32 - R24

Set Cast Iron Monument  
Down 0.5' ± in driveway.

TIE CHECK  
 6-4-76  
 G. ADAMS  
 B. SANJERUD  
 D. DAHL

TIE CHECK  
 6-7-79  
 B. STEPHENS  
 D. STEPHENS

TEMPERATURE CORRECTED  
 AND HORIZONTALLY  
 TAPED MEASUREMENTS  
 ROLAND W. ANDERSON  
 COUNTY SURVEYOR  
 ANOKA COUNTY, MINNESOTA



SE Cor. Sec. 24, T 32, R 24. (Broken off)

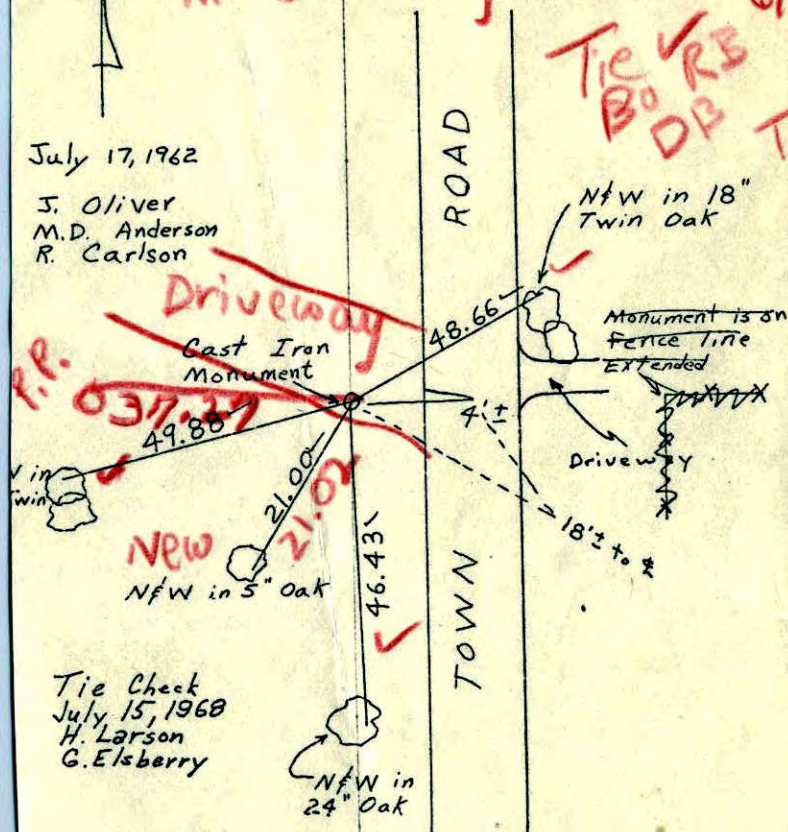
Set Cast Iron Monument ~~0.1~~ from Resurvey

Set Cast Iron Mon. 5' down in Drive way

Tie RB 6/27/72  
BO  
DB  
Tape #13

July 17, 1962

J. Oliver  
M.D. Anderson  
R. Carlson



AND W. ANDERSON TEMPERATURE CORRECTED  
COUNTY SURVEYOR AND HORIZONTALLY  
ANOKA COUNTY, MINNESOTA TAPED MEASUREMENTS

ROL

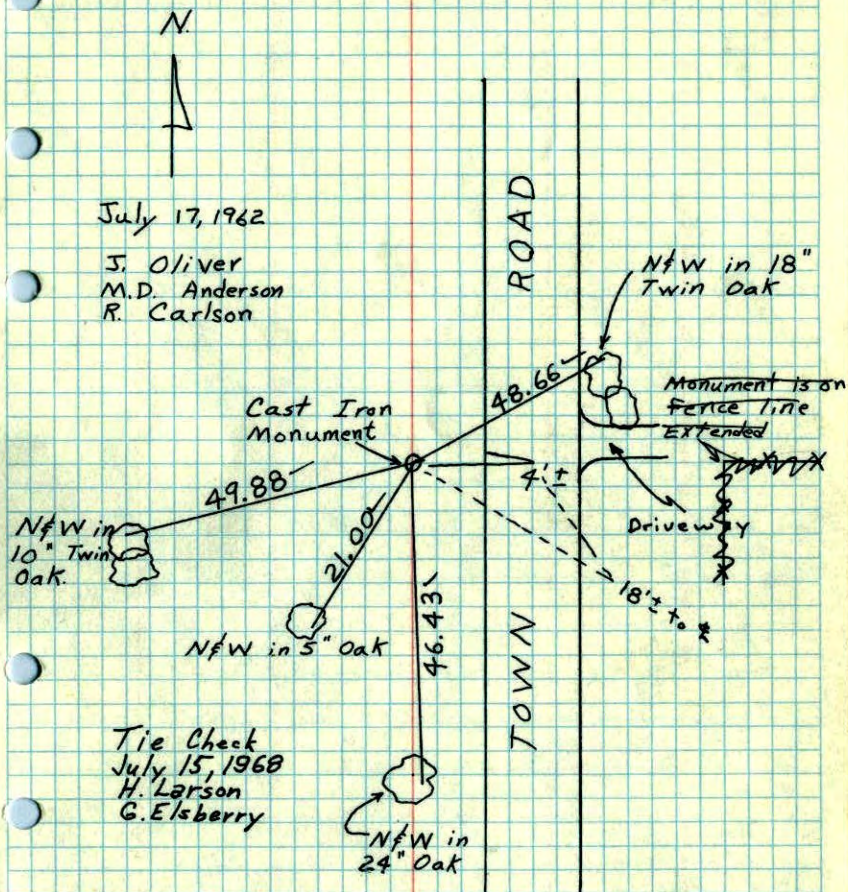
78

SE Cor. Sec. 24, T 32, R 24

Set Cast Iron Monument ~~0.1~~ from Resurvey  
Flush

July 17, 1962

J. Oliver  
M.D. Anderson  
R. Carlson

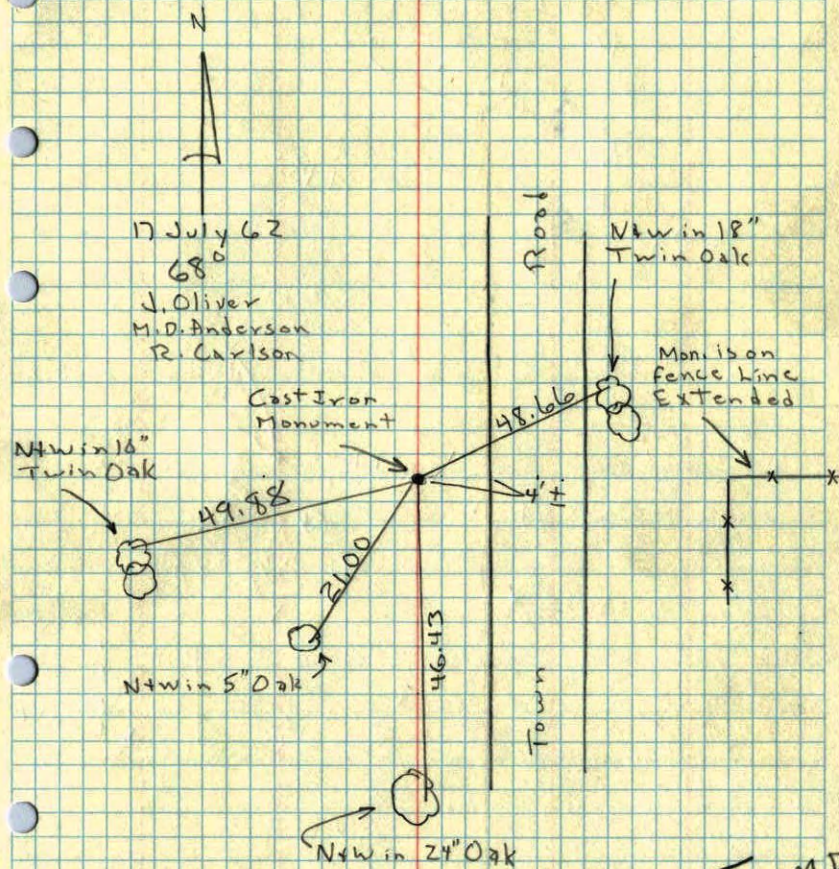


ROLAND W. ANDERSON TEMPERATURE CORRECTED  
COUNTY SURVEYOR AND HORIZONTALLY  
ANOKA COUNTY, MINNESOTA TAPED MEASUREMENTS



SE Cor. Sec. 24, T32, R24

Set C.I. Mon. up 0.1' from Resurvey



No Temp  
Correction  
Needed