

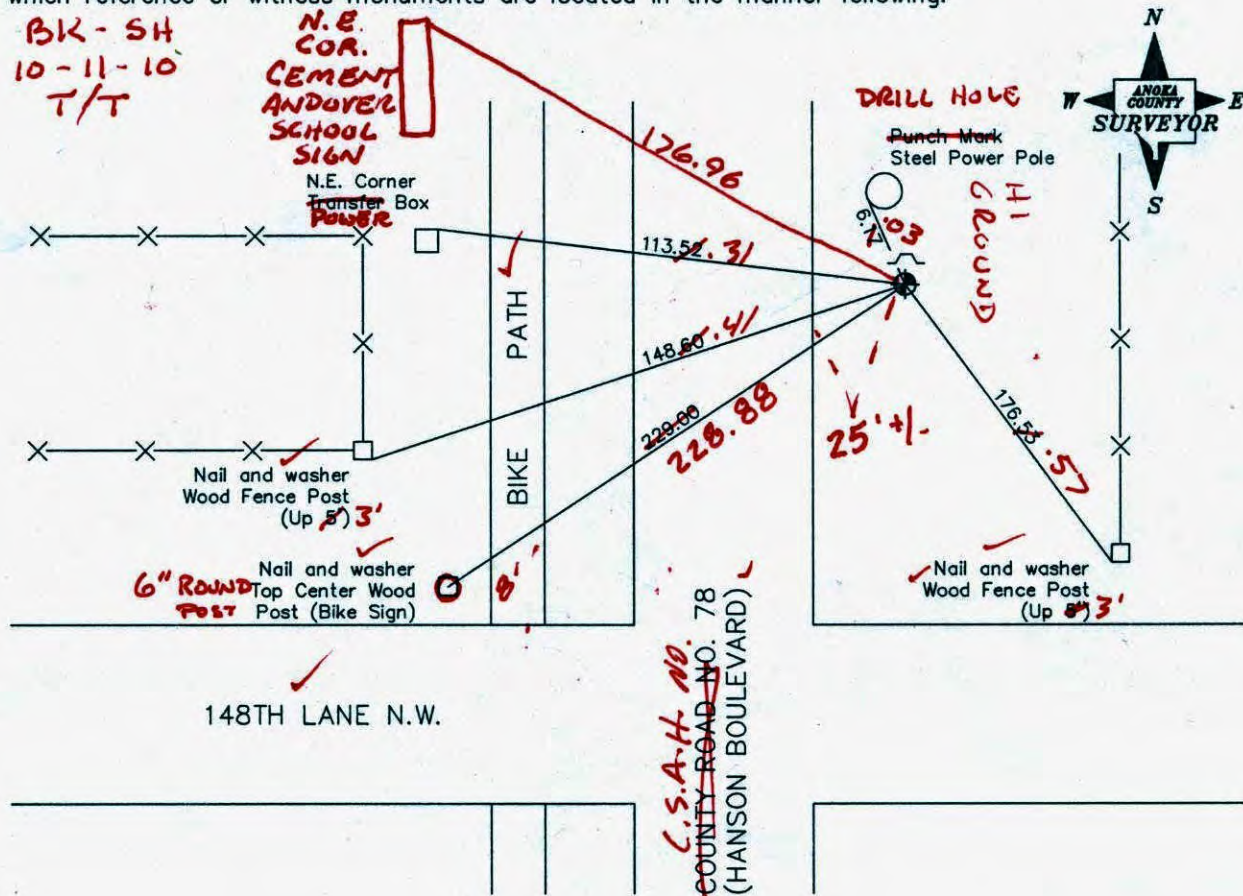
CERTIFICATE OF LOCATION OF GOVERNMENT CORNER  
County of Anoka State of Minnesota

Northeast Corner of Sec. 27 Township 32 Range 24

I hereby certify that on the 20th day of August, 1964, I found the described corner which was evidenced by a 1" iron pipe

and I further certify that to perpetuate the location of said corner, I did, at the exact location thereof, place a permanent marker consisting of a cast iron monument with sign and post on the north side (MON UP 0.10') (200± NORTH OF 148th LANE N.W.)

which reference or witness monuments are located in the manner following:



Revised date

7/27/88
7/19/93
6/30/00

N.A.D. 1983 Co-ordinates

County Project Co-ordinates
Northing 175022.7449
Easting 489869.7119

State Plane Co-ordinates
Y _____
X _____

Date 6/30/00

# CERTIFICATE OF LOCATION OF GOVERNMENT CORNER

County of Anoka

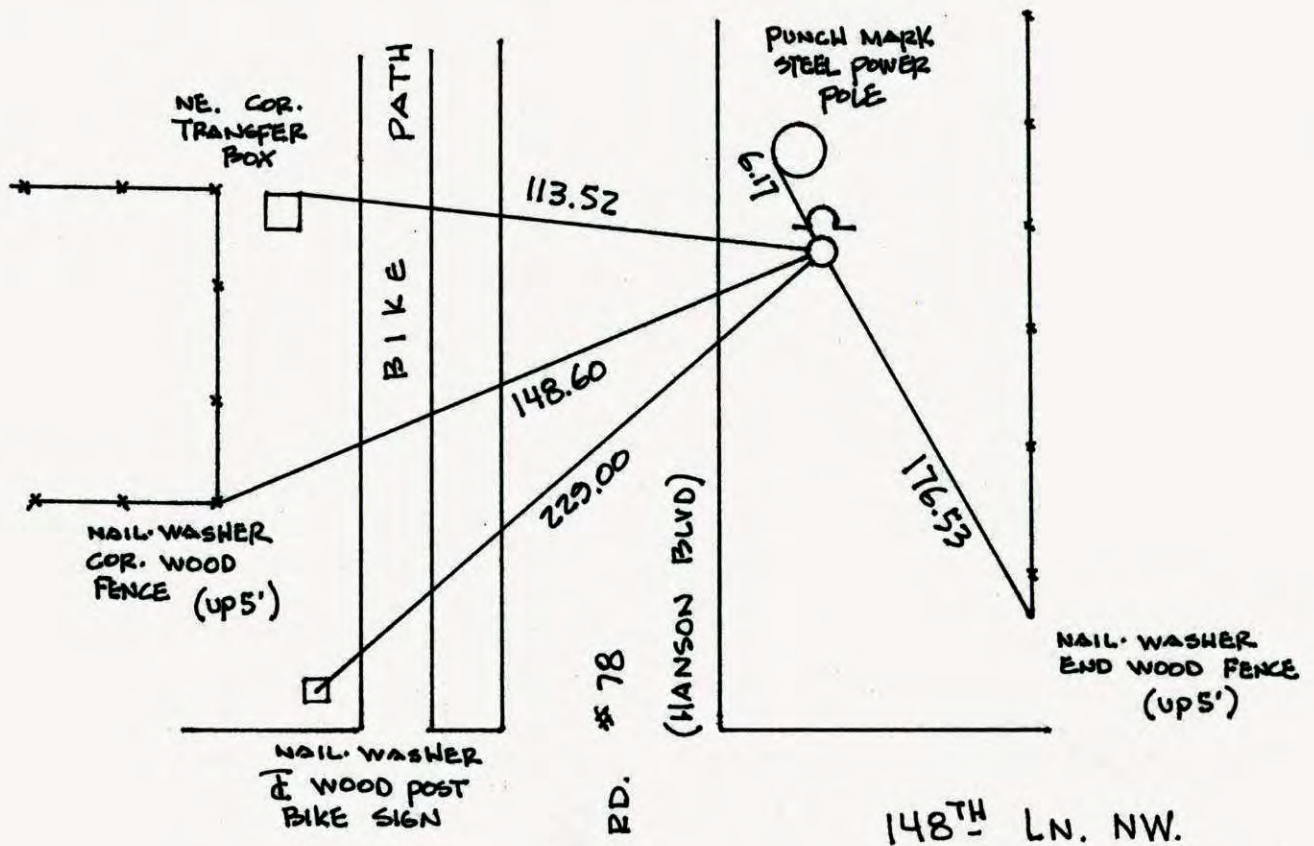
State of Minnesota

NORTHEAST Corner of Sec. 27 Township 32 Range 24

I hereby certify that on the 20<sup>TH</sup> day of AUGUST, 1964, I found the described corner which was evidenced by 1" IRON PIPE

and I further certify that to perpetuate the location of said corner, I did, at the exact location thereof, place a permanent marker consisting of CAST IRON MONUMENT SIGN & POST ON NORTH SIDE

which reference or witness monuments are located in the manner following:

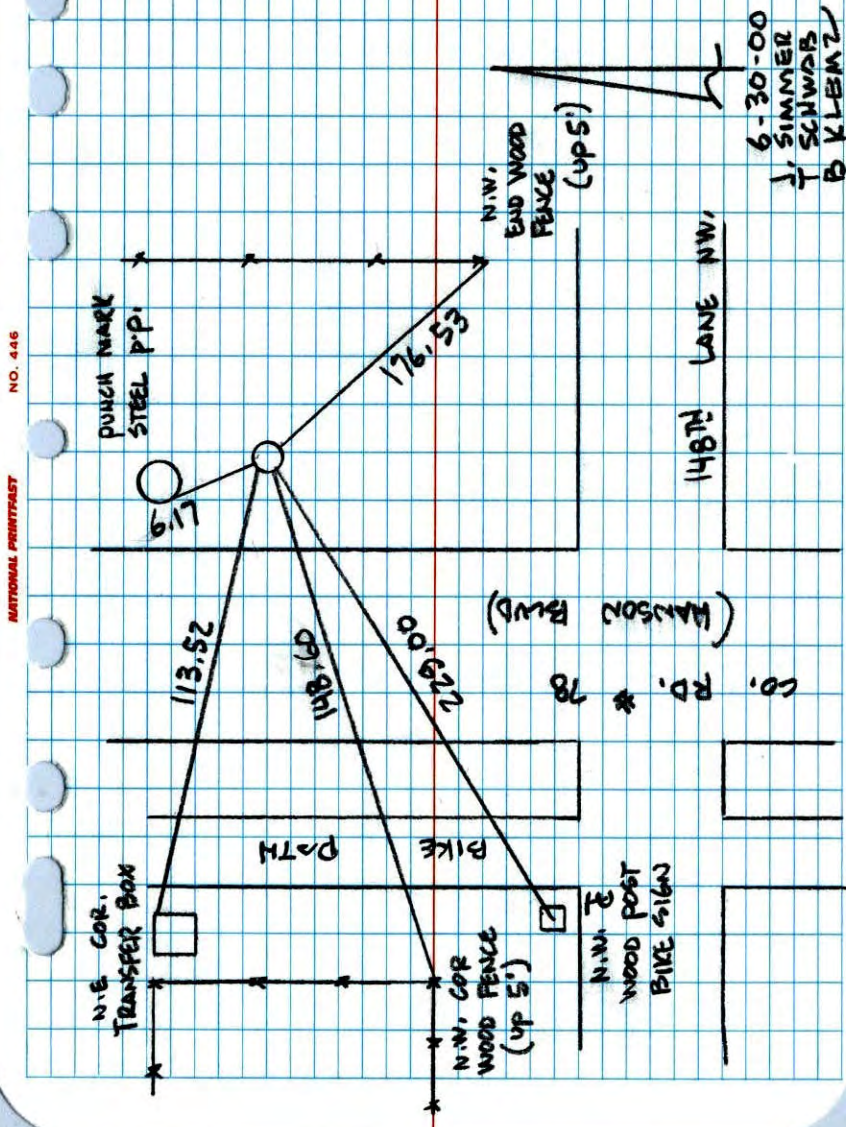


Revised date	Revised date	Revised date
7-27-88		
7-19-93		
6-30-00		



NORTHEAST COR. SEC. 27 T32 R24

GPS  $\hat{=}$  RETIED EAST IRON MONUMENT  
SIGN & POST ON NORTH SIGN

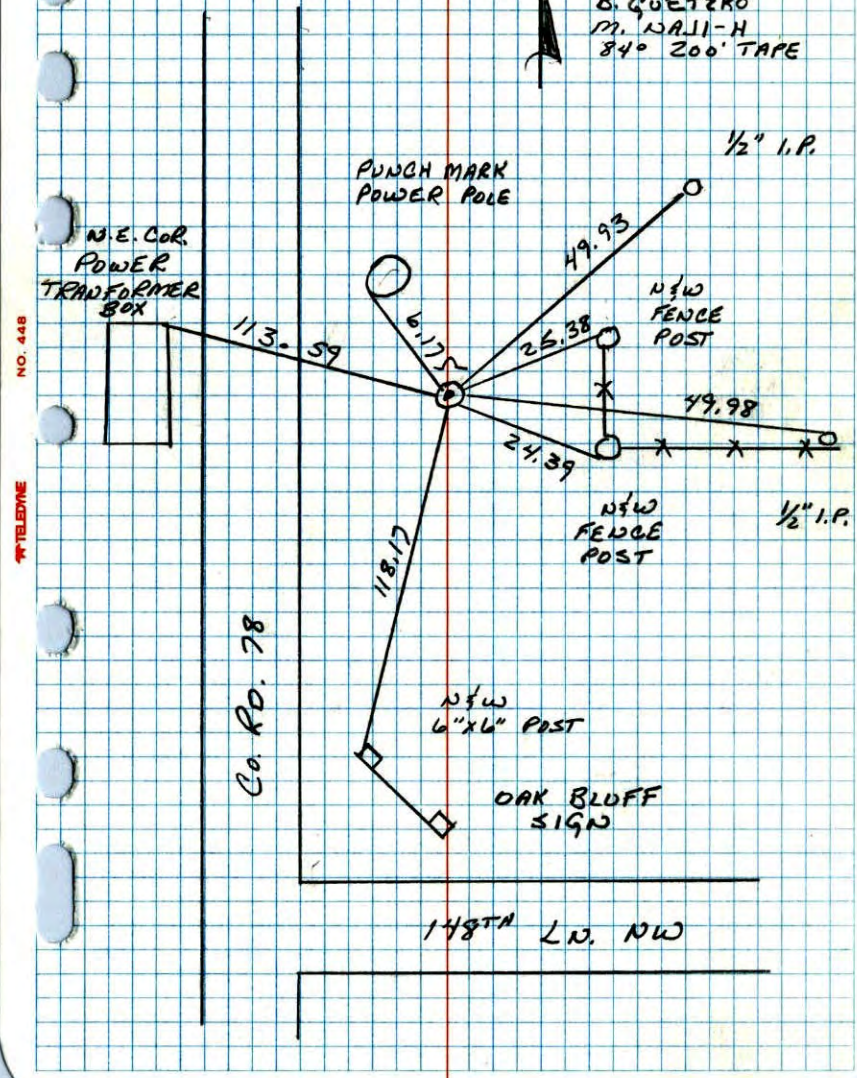


NATIONAL PRINTFAST NO. 446

N.E. COR. SEC 27 T32 R24

RETIED EAST IRON MONUMENT.

7-27-88  
B. QUETZKO  
M. WALI-H  
84° 200' TAPE



NATIONAL PRINTFAST NO. 446

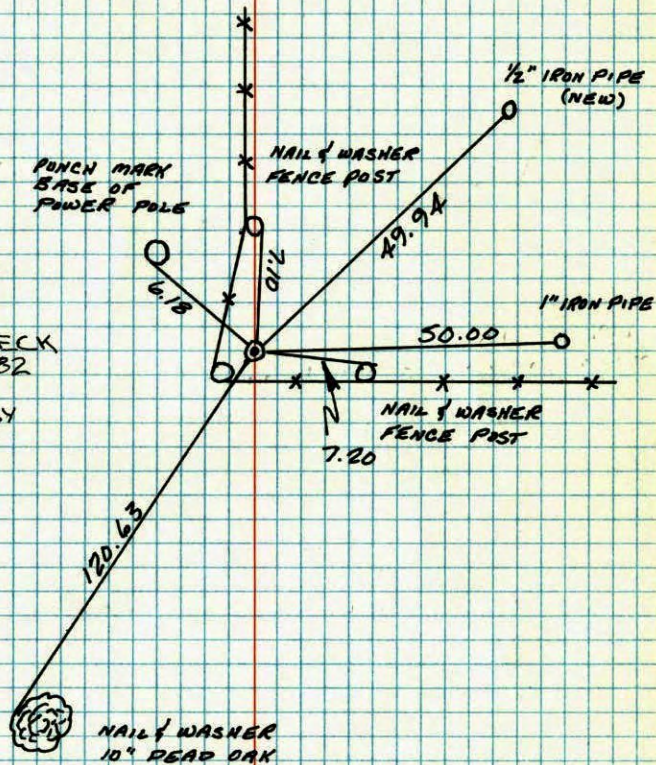
## N.E. CORNER SECTION 27 - T32 - R24

MOVED FENCE CORNER POST AND REPLACED IRON PIPE WITH CAST IRON MONUMENT. SIGN AND POST ON SOUTH SIDE.



11-4-81  
H. LARSON  
B. GUTZKO  
D. MAGLAK

TIE CHECK  
6-22-82  
P. ROSS  
P. HORNBY  
J. BEIER



TEMPERATURE CORRECTED  
AND HORIZONTALLY  
TAPED MEASUREMENTS

ROLAND W. ANDERSON  
COUNTY SURVEYOR  
ANOKA COUNTY, MINNESOTA

NO. 448

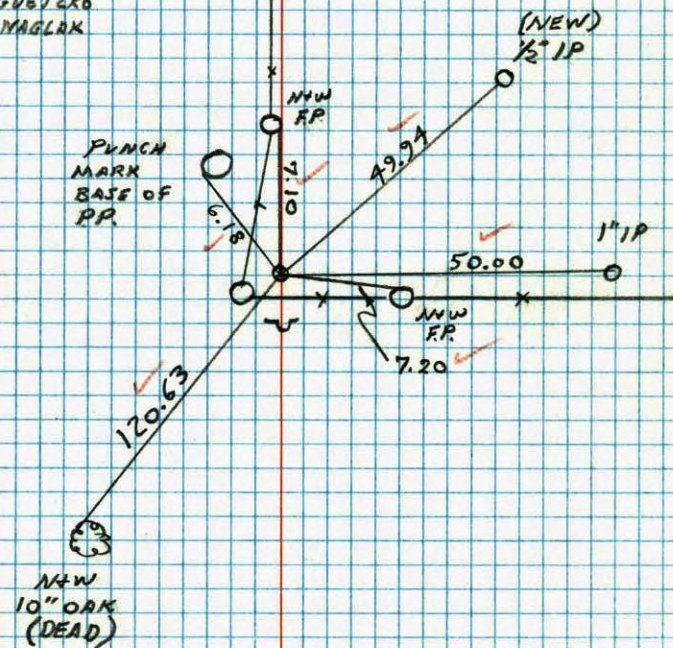
TELEPHONE

## NECORNER SECTION 27 T32 R24

MOVED CORNER FENCE POST AND  
REPLACED IP WITH CAST IRON. SIGN  
AND POST ON SOUTH SIDE.

200' 60"  
11-4-81  
H. LARSON  
B. GUTZKO  
D. MAGLAK

PUNCH  
MARK  
BASE OF  
PP.



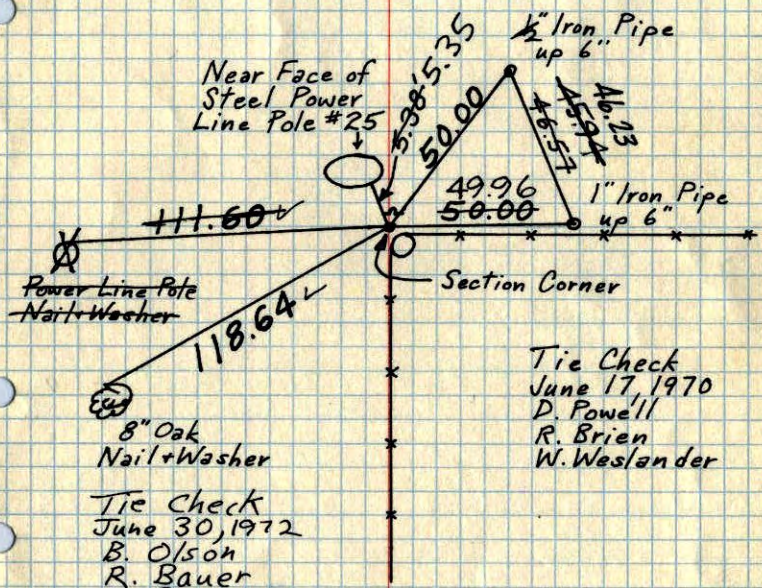
NO. 448

TELEPHONE

NE Cor. Sec. 27-T32-R24

1" Iron Pipe up 0.5'± from ties of 1960 by R.M. Knutson. Steel Fence Post on North Side up 2'±. Section Cor. is 0.1'± Northwest of corner fence post.

Aug. 20, 1964  
M.D. Anderson  
J. Dunlap



Tie Check  
June 17, 1970  
D. Powell  
R. Brien  
W. Weslander

Tie Check  
June 30, 1972  
B. Olson  
R. Bauer  
D. Brien

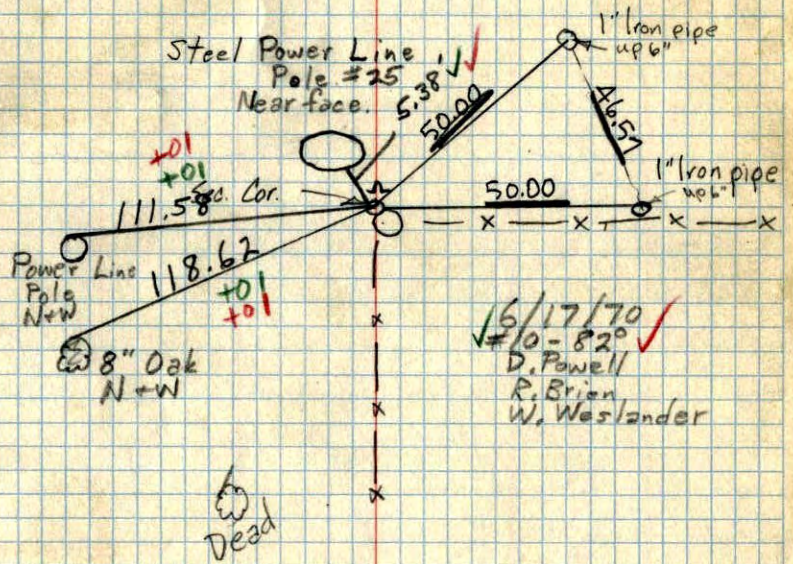
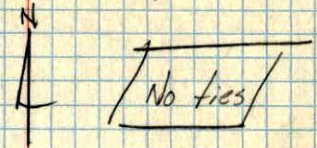
TIE CHECK	TIE CHECK
6-7-76	6-11-79
G. ADAMS	B. STEPHENS
B. SANDERUD	D. STEPHENS
S. BRIEN	P. ROSS

TEMPERATURE CORRECTED AND HORIZONTALLY TAPED MEASUREMENTS ROLAND W. ANDERSON COUNTY SURVEYOR ANOKA COUNTY, MINNESOTA

Reference tie for NE Cor. Sec. 27-T32-R24  
1" Iron pipe used as sec. cor. to be removed for power line construction.

Steel Fence Post on N. Side up 2'±

Oct. 28, 1969  
M.D. Anderson  
H.J. Larson  
R.A. Olson



6/17/70  
#10-82°  
D. Powell  
R. Brien  
W. Weslander

Dead

N.E. Cor. Sec. 27-T32-R24

found 1" iron pipe flush from ties  
of 1960 by R.M. Knutson

Aug. 20, 1964

M.D. Anderson  
J. Dunlap

10" Oak  
nail & washer

118.79

120.55

most northerly  
13" Elm of 4 Elms  
nail & washer

209.36

most northwestern  
11" Oak of 4 Oaks  
nail & washer

**ROLAND W. ANDERSON**  
COUNTY SURVEYOR  
ANOKA COUNTY, MINNESOTA

**TEMPERATURE CORRECTED  
AND HORIZONTALLY  
TAPED MEASUREMENTS**

N.E. Cor. Sec. 27-T32-R24

found 1" iron pipe flush from  
ties by R.M. Knutson of  
1960

Aug. 20, 1964

M.D. Anderson  
J. DunlapTemp. 70° —  
Tape #7 —

10" Oak  
nail & washer

118.78

118.79

120.54

120.55

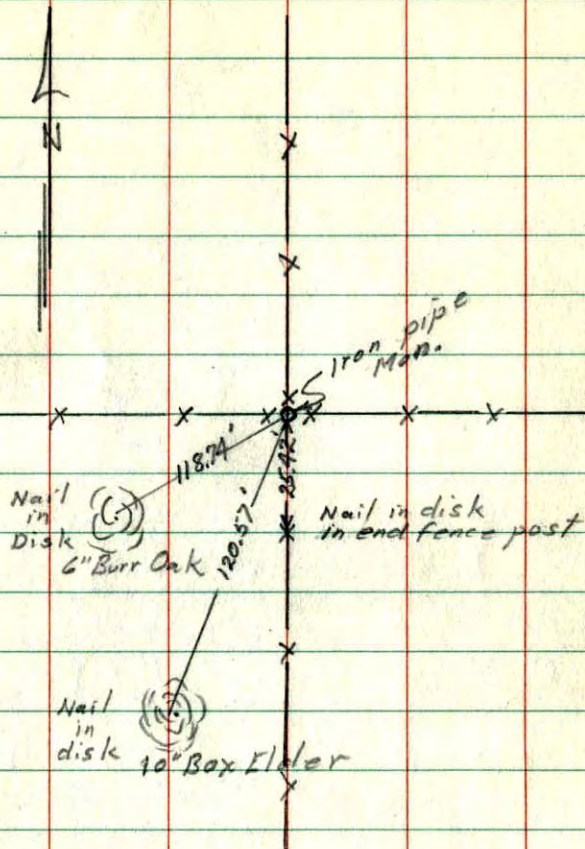
209.36

209.34

Most Northerly  
13" Elm of 4 Elms  
nail & washer

Most Northwestern  
11" Oak of 4 Oaks  
nail & washer

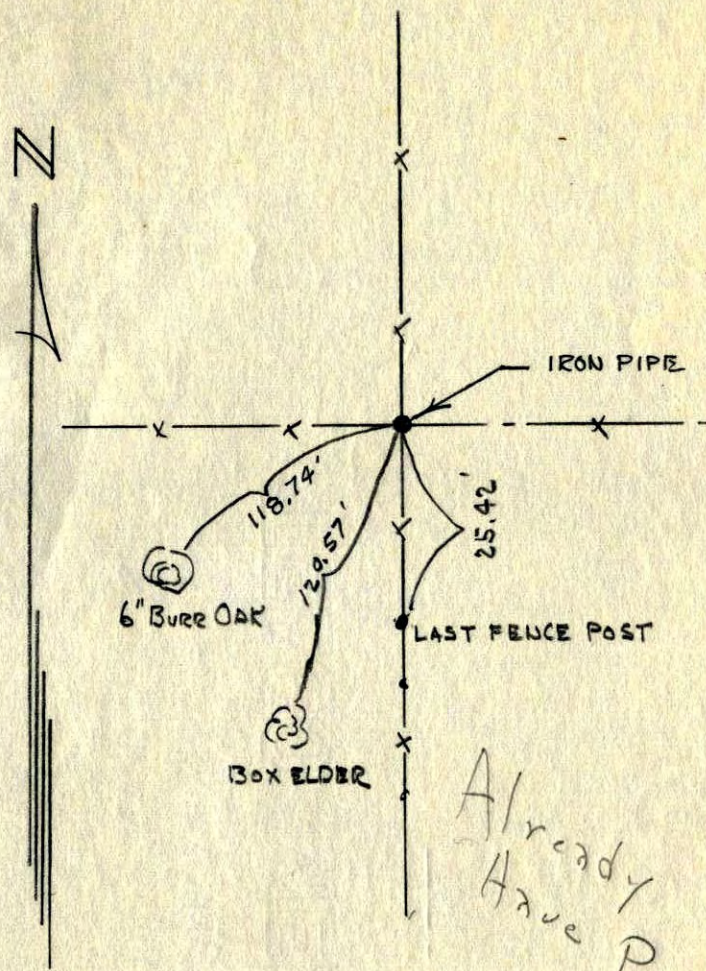
N.E. Cor. Sec. 27-32-24



Nov. 3, 1960

Robert M. Knudsen.

N.E. CORNER TIE  
SECTION 27-32-24



Already  
Have P 9 25