

# CERTIFICATE OF LOCATION OF GOVERNMENT CORNER

County of Anoka

State of Minnesota

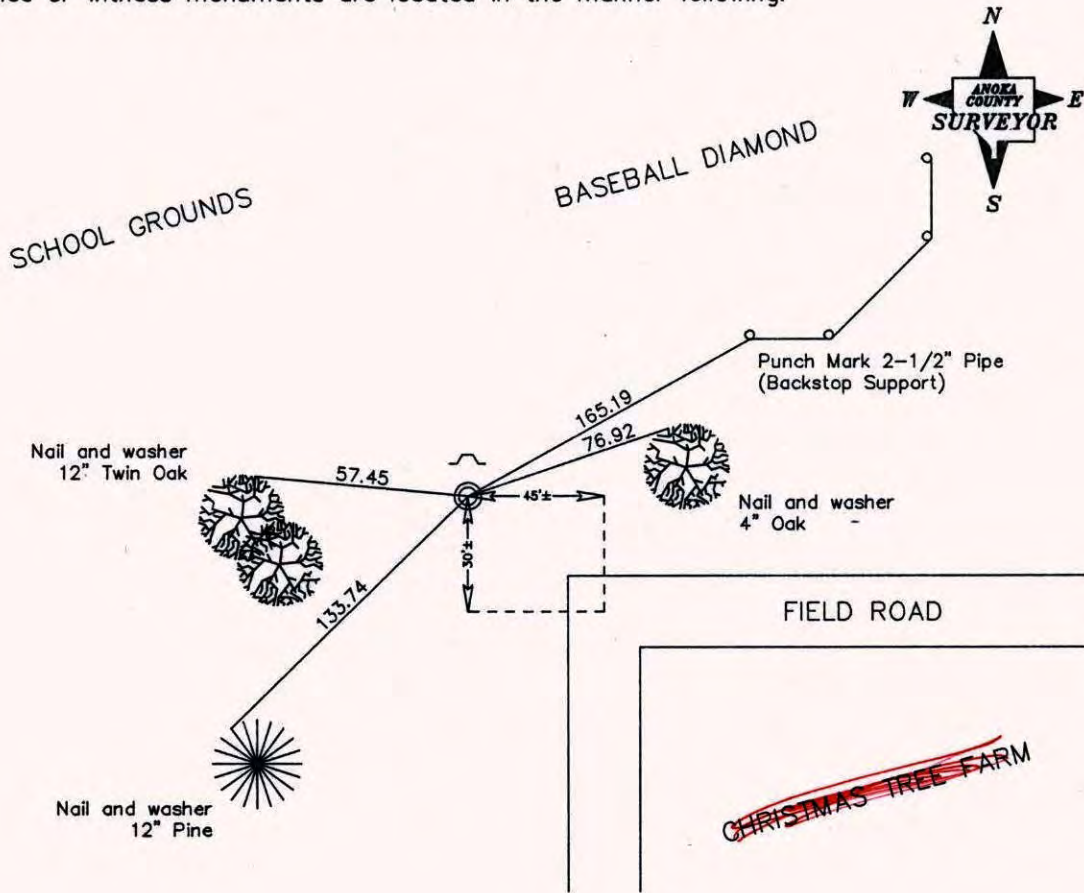
North 1/16 Corner of Sec. 27 Township 32 Range 24

North Line of NE 1/4

I hereby certify that on the 4th day of October, 1968, I found the described corner which was evidenced by a 1-1/2" iron pipe

and I further certify that to perpetuate the location of said corner, I did, at the exact location thereof, place a permanent marker consisting of a 1-1/2" iron pipe with sign and post on the north side

which reference or witness monuments are located in the manner following:



Revised date

6/22/82
6/6/85
8/1/88

N.A.D. 1983 Co-ordinates

County Project Co-ordinates	State Plane Co-ordinates
Northing _____	Y _____
Easting _____	X _____

Date(No GPS Info Taken)

# CERTIFICATE OF LOCATION OF GOVERNMENT CORNER

County of Anoka

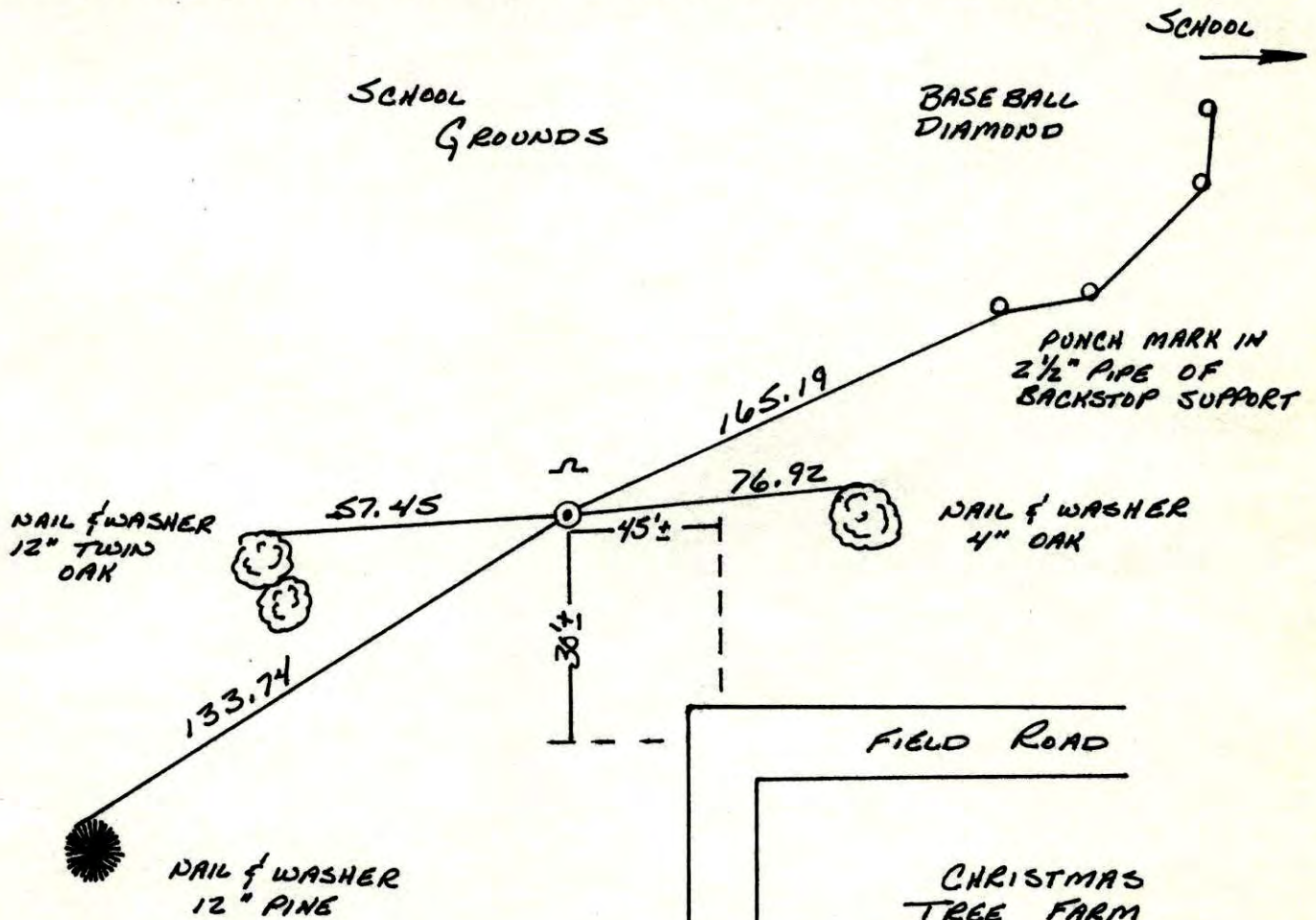
State of Minnesota

NORTH 1/16 Corner of Sec. 27 Township 32 Range 24  
NORTH LINE OF NE 1/4

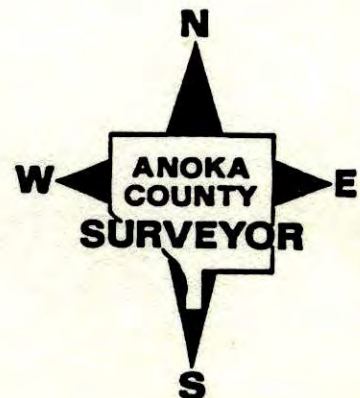
I hereby certify that on the 4 day of OCTOBER, 1968, I found the described corner which was evidenced by 1 1/2" IRON PIPE

and I further certify that to perpetuate the location of said corner, I did, at the exact location thereof, place a permanent marker consisting of 1 1/2" IRON PIPE WITH SIGN AND POST ON THE NORTH SIDE

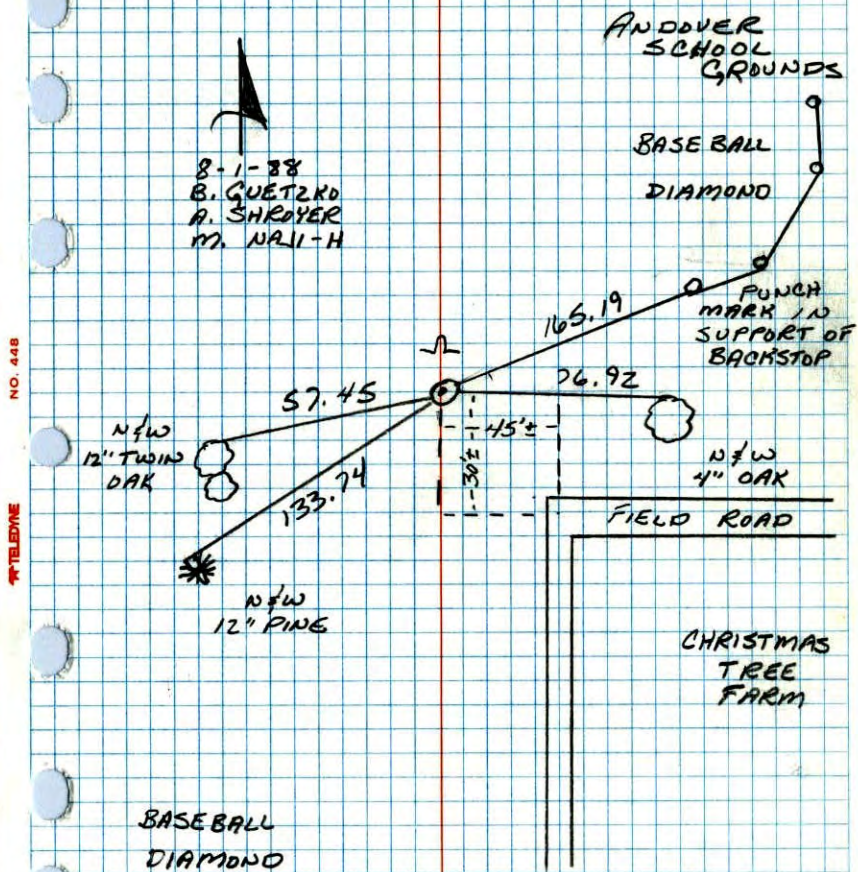
which reference or witness monuments are located in the manner following:



Revised date	Revised date	Revised date
6-22-82		
6-6-85		
8-1-88		



N<sup>1</sup>/<sub>16</sub> Cor. ON THE NORTH LINE OF THE NE<sup>1</sup>/<sub>4</sub>  
 SEC 27 T32 R24  
 RETIED 1 1/2" IRON PIPE.



NO. 448

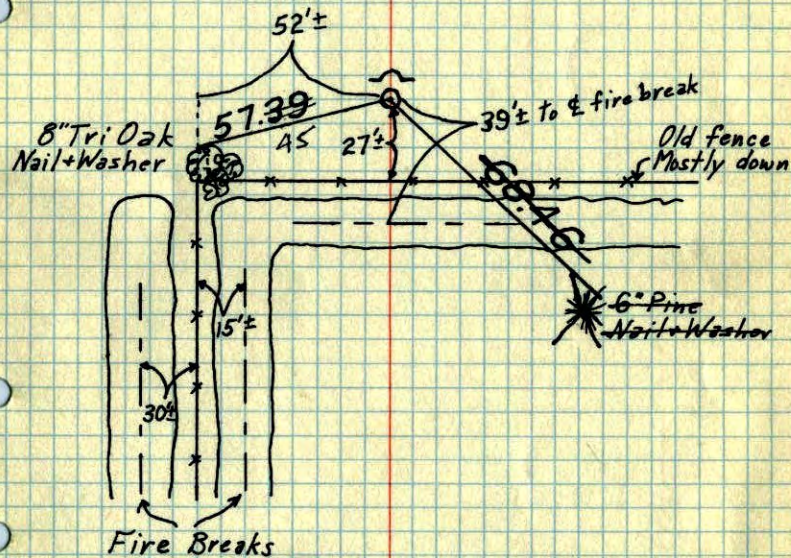
TELEPHONE

N<sup>1</sup>/<sub>16</sub> Cor. on N. line NE<sup>1</sup>/<sub>4</sub> Sec. 27-T32-R24

Found 1 1/2" Iron Pipe up 1.0'±.

Placed steel sign post on North Side.

October 4, 1968  
 M. D. Anderson  
 H. J. Larson  
 R. A. Olson



TIE CHECK	TIE CHECK	TIE CHECK
6-7-76	6-11-79	6-22-82
G ADAMS	B. STEPHENS	P. ROSS
B SAUNDER	D. STEPHENS	P. HORNBY
S GRIEN	P. ROSS	J. BEIER

TEMPERATURE CORRECTED AND HORIZONTALLY TAPED MEASUREMENTS  
 ROLAND W. ANDERSON  
 COUNTY SURVEYOR  
 ANOKA COUNTY, MINNESOTA

N<sup>1</sup>/<sub>10</sub><sup>th</sup> Cor. on N. line N.E. 1/4 Sec. 27 T32 R24

found 1 1/2" I.P. up. 1.0'±

Placed steel sign post on N. side

