

# CERTIFICATE OF LOCATION OF GOVERNMENT CORNER

County of Anoka

State of Minnesota

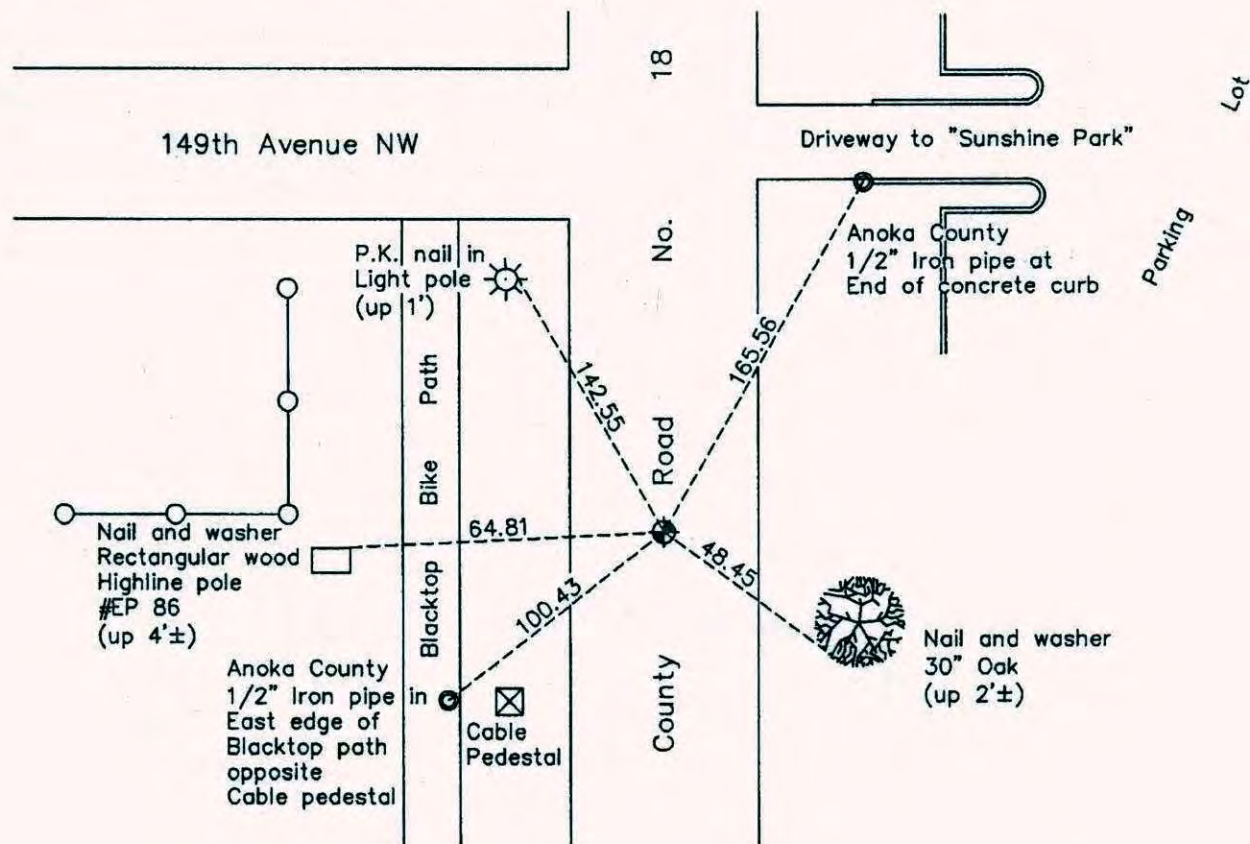
## North $\frac{1}{4}$ Corner of Sec. 27 Township 32 Range 24

On the 11th day of June, 1959, the described corner was evidenced by a 1/4" solid iron rod

and to perpetuate the location of said corner, at the exact location thereof, a permanent marker was placed consisting of a cast iron monument

AND on the 15th day of July, 2010, said permanent marker was found, raised to surface after construction and the ties were updated

Updated reference ties are as shown below.



Revision Date

8/30/10

N.A.D. 1983 Coordinates  
(1996 Adjustment)

County Project Coordinates	
Northing	175059.9222
Easting	487219.3196
Date	7/31/00

I hereby certify that this United States public land survey monument record is correct and complete to the best of my knowledge and belief.

*Larry D. Hoium* Date 8/30/10

Larry D. Hoium, Anoka County Surveyor

Minnesota License Number 18165

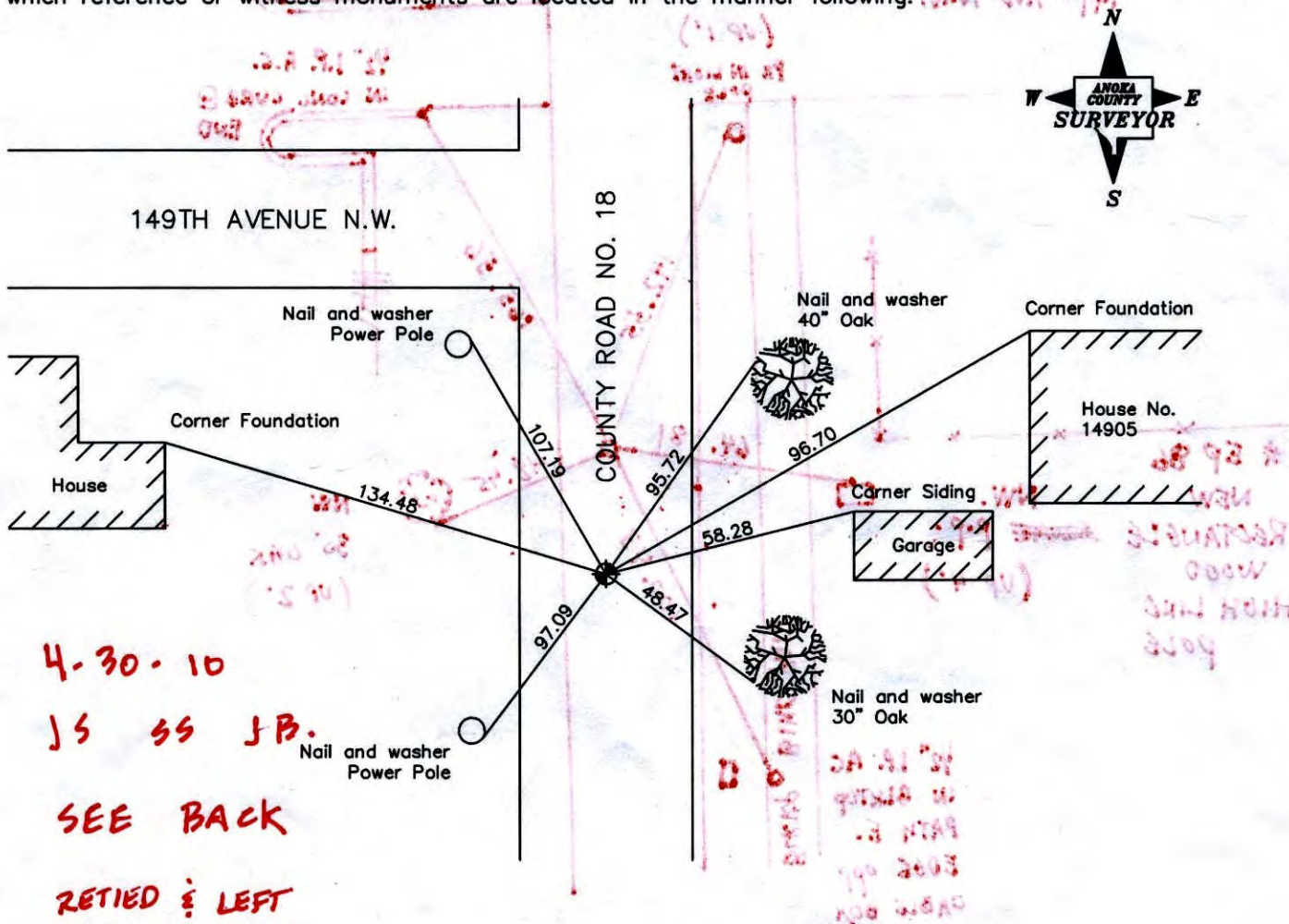
CERTIFICATE OF LOCATION OF GOVERNMENT CORNER  
County of Anoka State of Minnesota

North 1/4 Corner of Sec. 27 Township 32 Range 24

I hereby certify that on the 11th day of June, 1959, I found the described corner which was evidenced by a 1/4" solid iron rod

and I further certify that to perpetuate the location of said corner, I did, at the exact location thereof, place a permanent marker consisting of a cast iron monument

which reference or witness monuments are located in the manner following:



4-30-10

JS SS JB.

SEE BACK

RETIRED & LEFT  
C.I.M. IN PLACE

Revised date

N.A.D. 1983 Co-ordinates

7/21/93
10/4/93
7/31/00

7-15-10  
RAISED

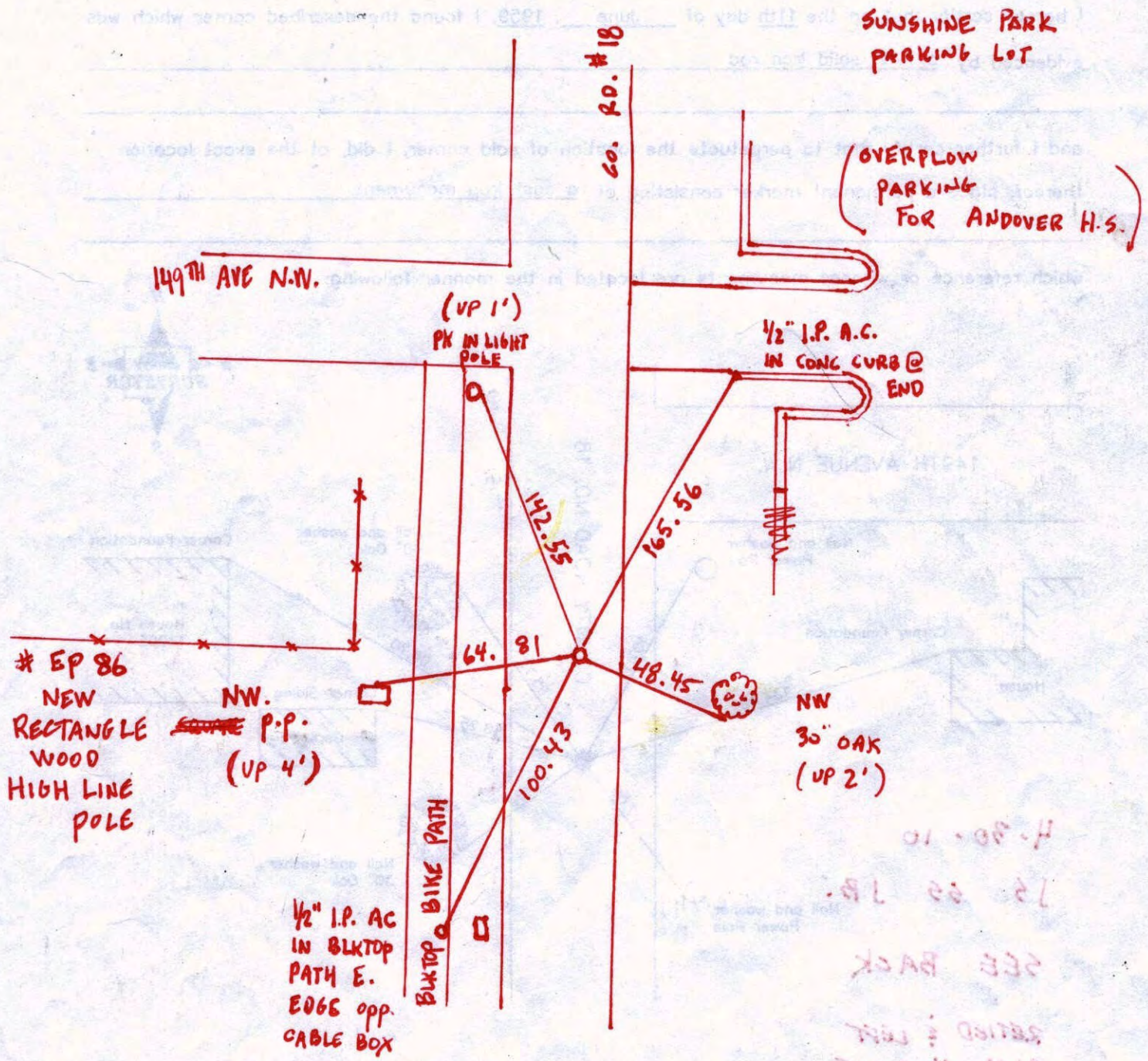
County Project Co-ordinates
Northing 175059.9222
Easting 487219.3196

State Plane Co-ordinates
Y _____
X _____

Date 7/31/00

CERTIFICATE OF LOCATION OF GOVERNMENT CORNER  
State of Minnesota  
County of Anoka  
North 1/4 Corner of Sec 27 Township 32 Range 24

1959 I found the described corner which was the 15th day of June



SEE BACK  
SETTLED & LEFT  
DIM IN PLACE  
7-2-10  
7-2-10

State Plans Co-ordinator	County Engineer	City Engineer

# CERTIFICATE OF LOCATION OF GOVERNMENT CORNER

County of Anoka

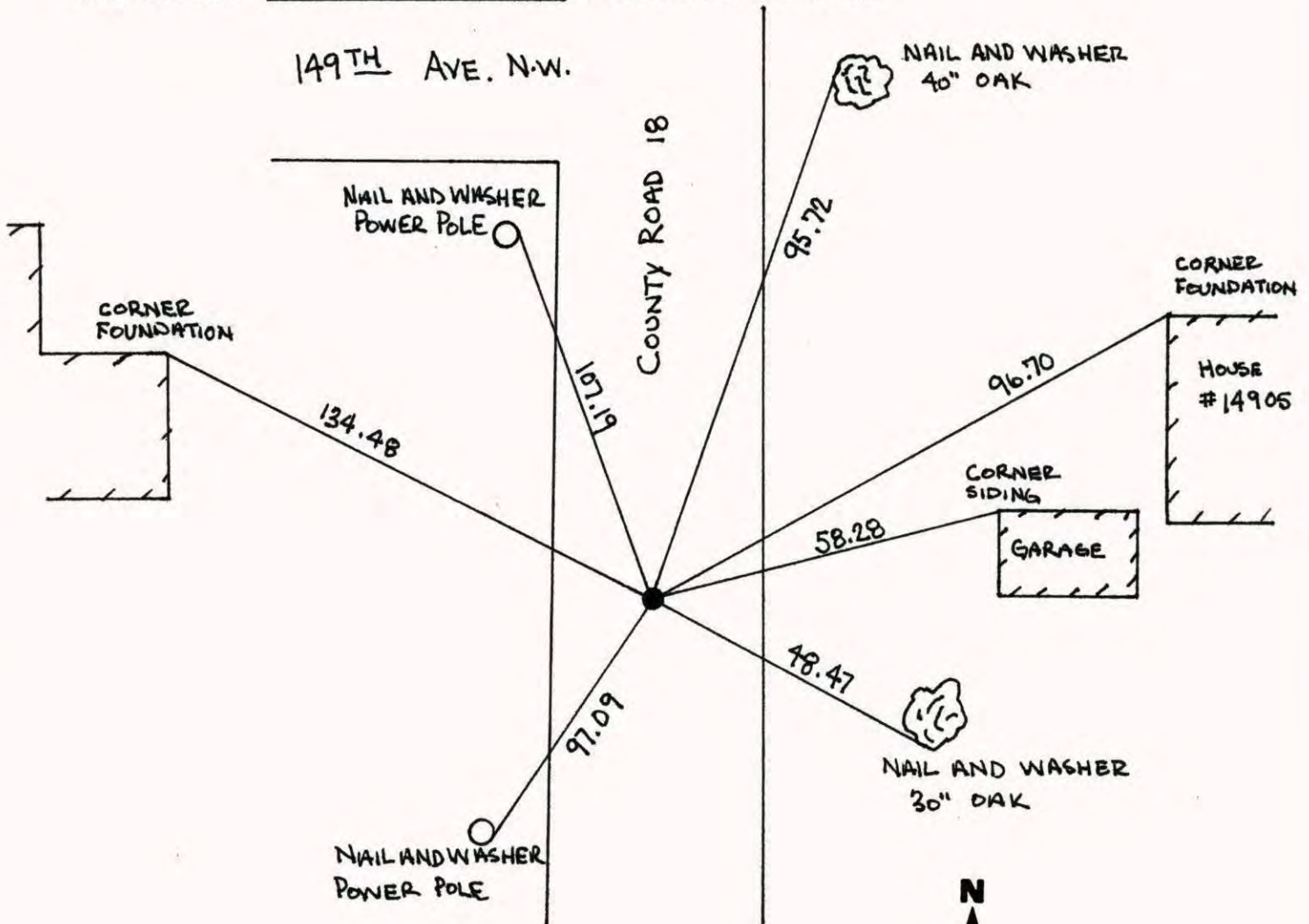
State of Minnesota

NORTH QTR. Corner of Sec. 27 Township 32 Range 24

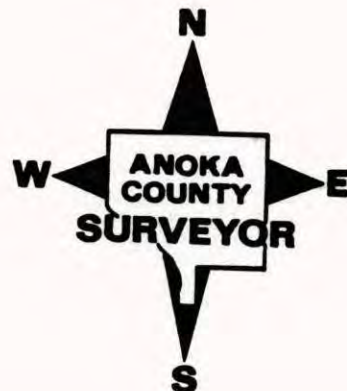
I hereby certify that on the 11<sup>TH</sup> day of JUNE, 19 59, I found the described corner which was evidenced by 1/4" SOLID IRON ROD

and I further certify that to perpetuate the location of said corner, I did, at the exact location thereof, place a permanent marker consisting of CAST IRON MONUMENT

which reference or witness monuments are located in the manner following:

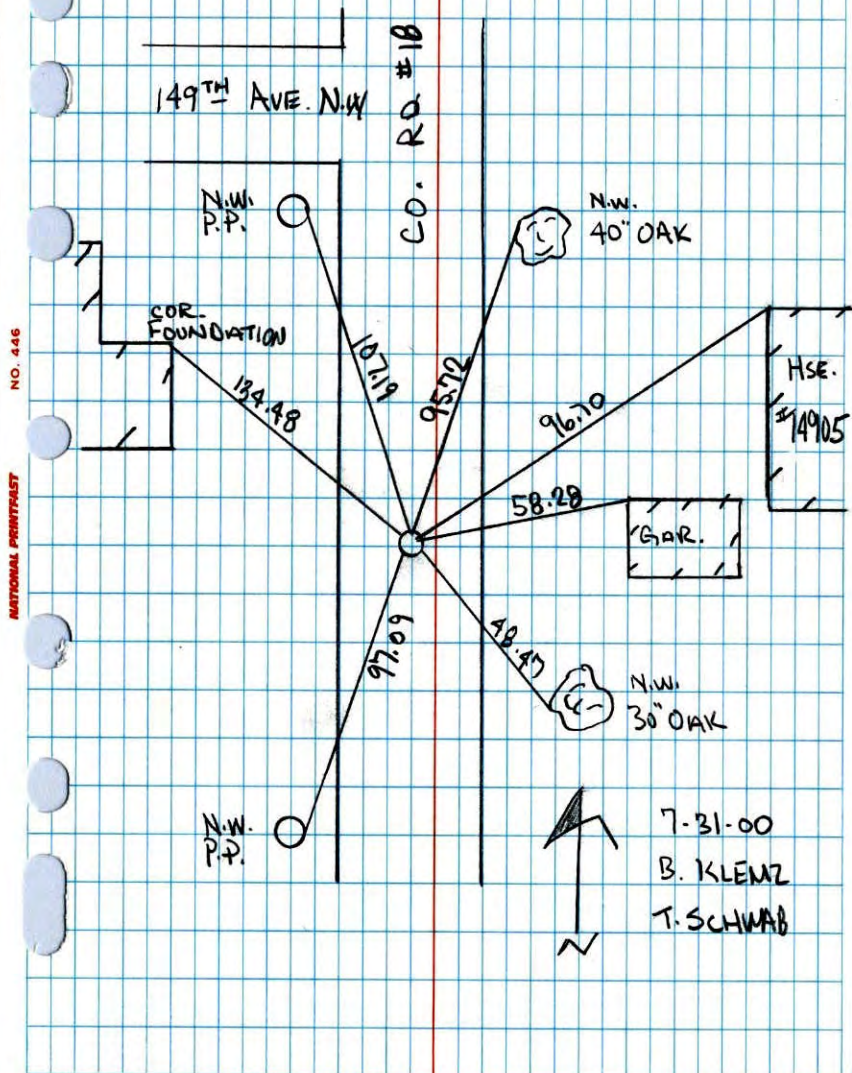


Revised date	Revised date	Revised date
6-25-82		
6-6-85		
7-29-88		
7-21-93		
10-4-93		
7-31-00		



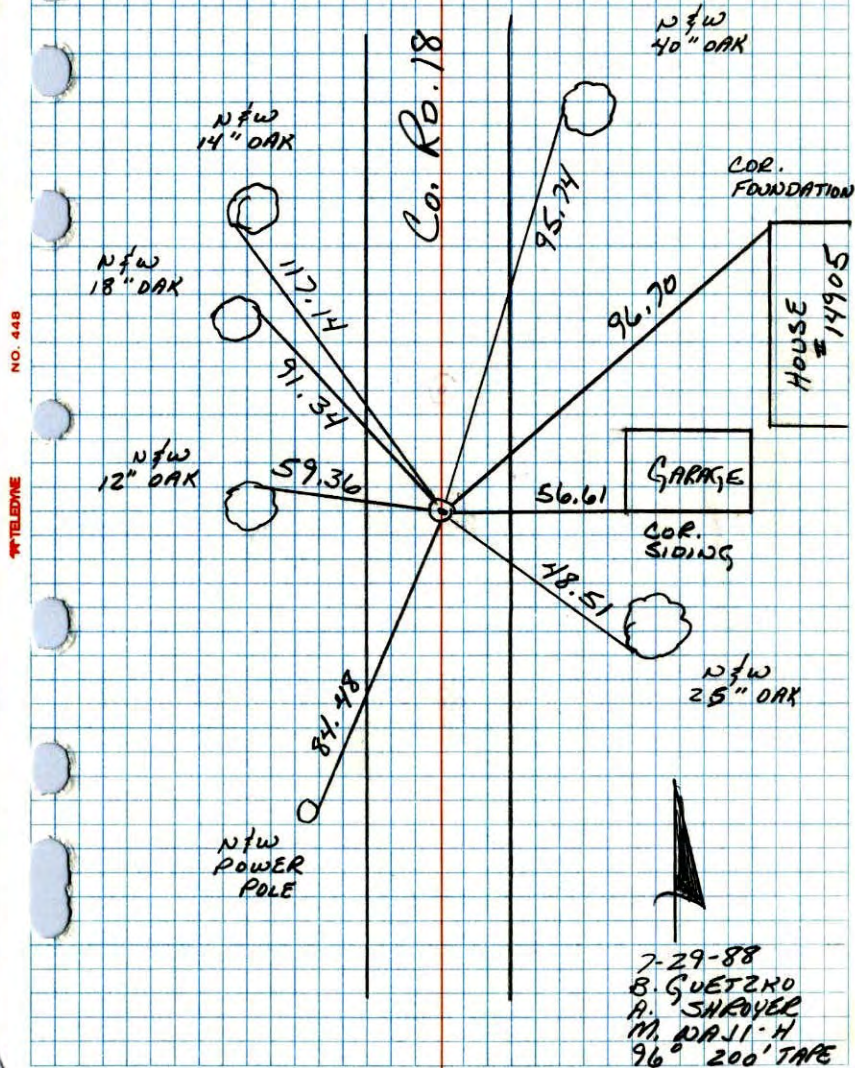
NORTH QTR. SEC. 27, T. 32, R. 24

RETIED C.I.M.



N 1/4 CORNER SEC 27 T32 R24

RETIED CAST IRON MONUMENT

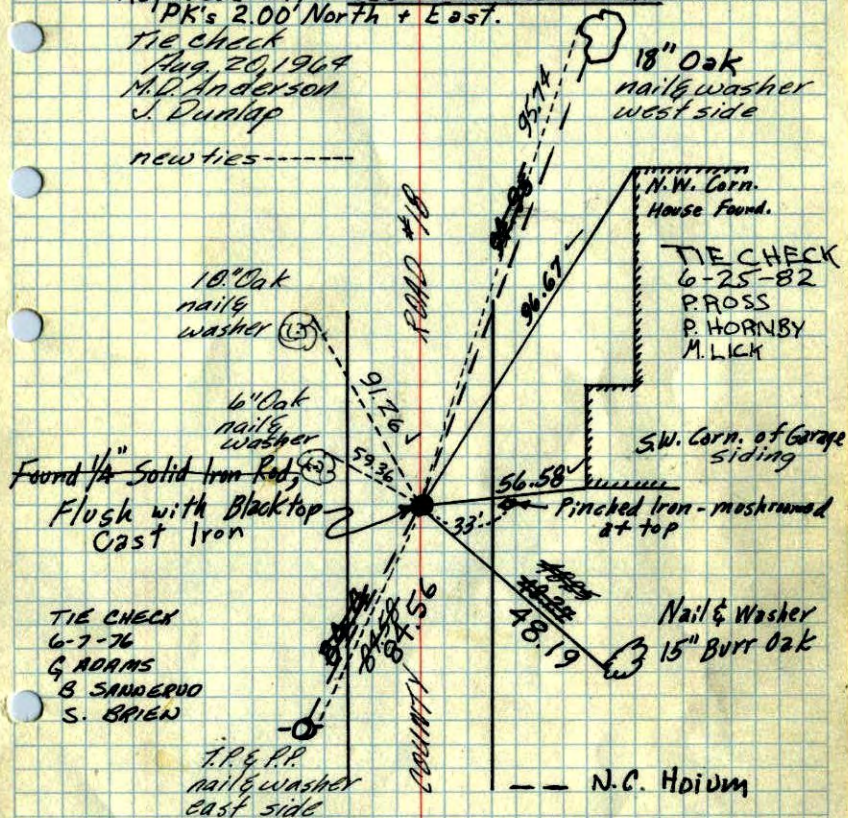


N<sup>1</sup>/<sub>4</sub> Corn. Sec. 27, T32, R24

found  $\frac{1}{4}$ " solid iron rod flush  
 Replaced with Cast Iron Monument flush.  
 PK's 2.00' North + East.

Tie check  
 Aug. 20, 1964  
 M.D. Anderson  
 J. Dunlap

new ties -----



TIE CHECK  
 6-7-76  
 G. ADAMS  
 B. SANDERUD  
 S. BRIEN

Tie Check  
 July 26, 1968  
 D. Powell  
 R. Olson  
 P. Pieh

Ties Checked  
 June 30, 1972  
 B. Olson  
 R. Bauer  
 D. Brieh

Wayne L. Ridge Assisting  
 TIE CHECK  
 6-6-73  
 B. STEPHENS  
 D. STEPHENS  
 D. NAGLAK  
 6/11/59  
 Roland W. Anderson

ROLAND W. ANDERSON  
 COUNTY SURVEYOR  
 ANOKA COUNTY, MINNESOTA

N<sup>1</sup>/<sub>4</sub> Sec 27 T32 R24