

# CERTIFICATE OF LOCATION OF GOVERNMENT CORNER

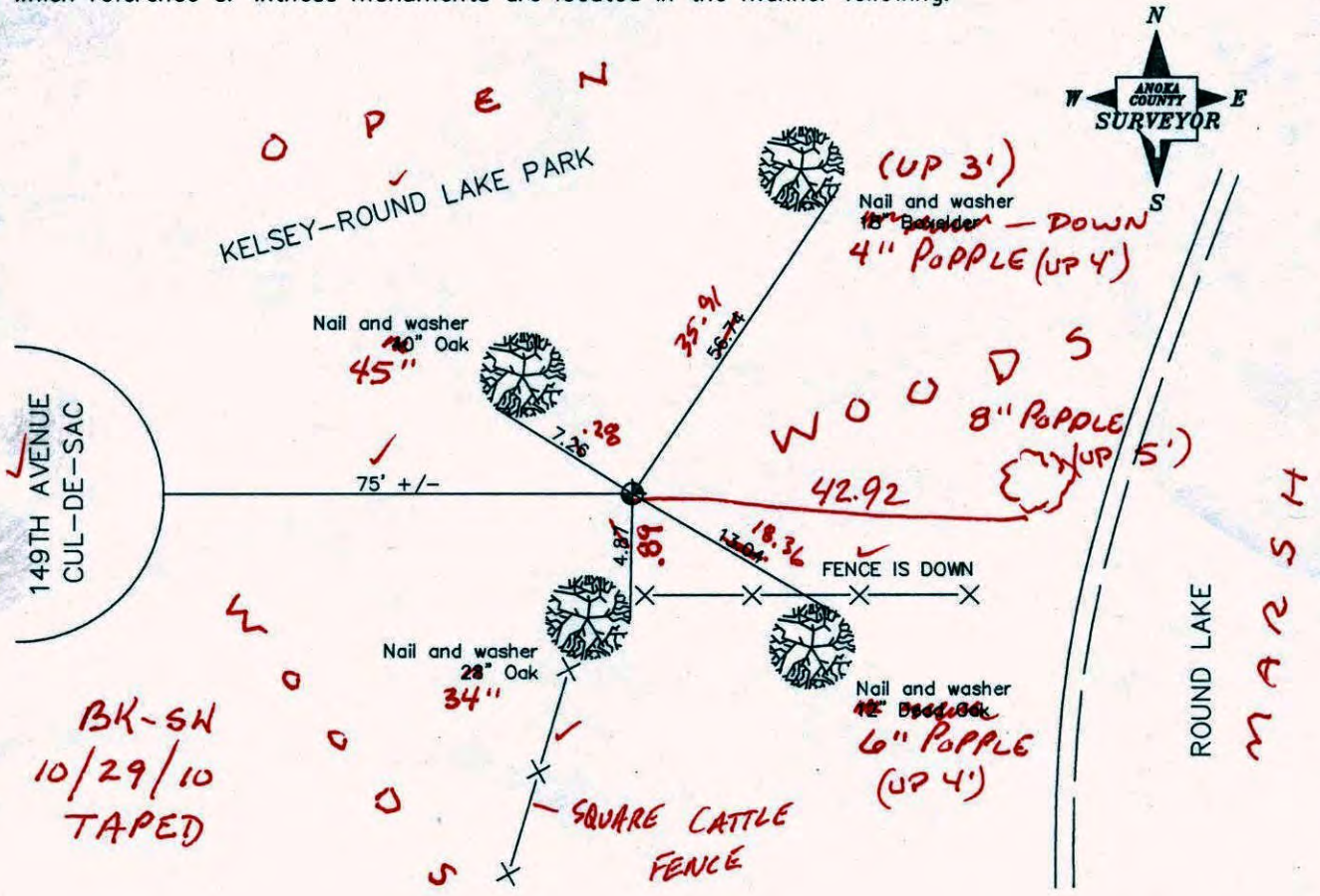
County of Anoka State of Minnesota

Meander #9 Corner of Sec. 20 Township 32 Range 24

I hereby certify that on the 2nd day of July, 1963, I found the described corner which was evidenced by area resurvey

and I further certify that to perpetuate the location of said corner, I did, at the exact location thereof, place a permanent marker consisting of a cast iron monument sitting on top of a large tree root, with sign and post on the north side (UP 0.2')

which reference or witness monuments are located in the manner following:



Revised date

7/28/88
7/19/93
1/2/01

N.A.D. 1983 Co-ordinates

County Project Co-ordinates	State Plane Co-ordinates
Northing <u>175113.9489</u>	Y _____
Easting <u>474707.2432</u>	X _____

Date 1/2/01



# CERTIFICATE OF LOCATION OF GOVERNMENT CORNER

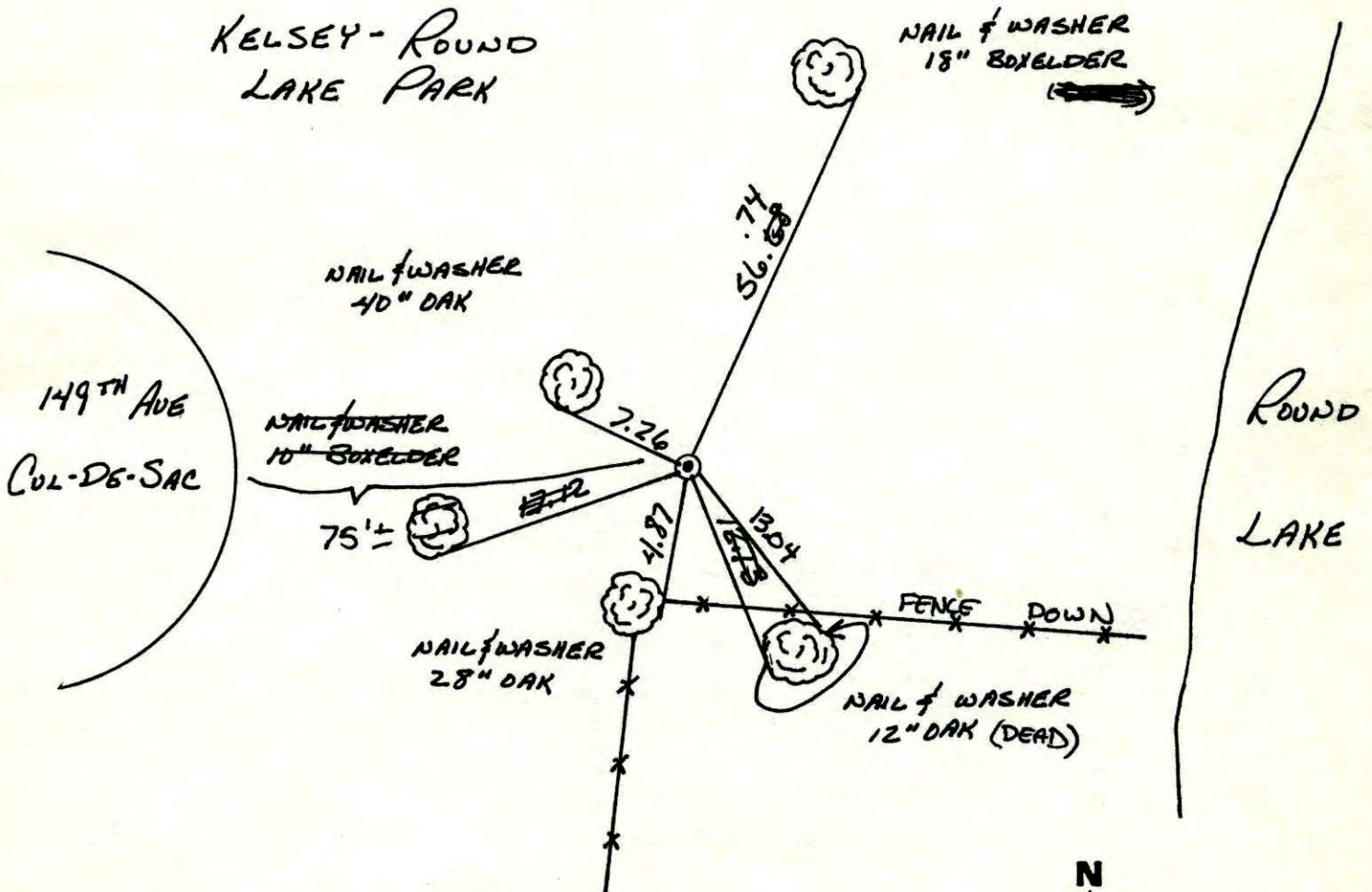
County of Anoka

State of Minnesota

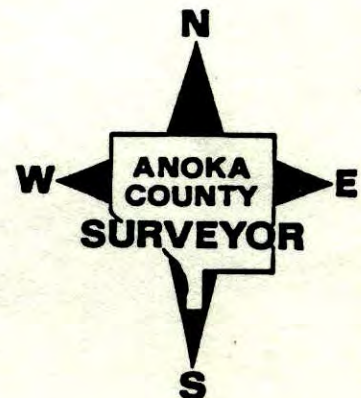
MEANDER #9 Corner of Sec. 20 Township 32 Range 24

I hereby certify that on the 2 day of JULY, 1963, I found the described corner which was evidenced by AREA RESURVEY

and I further certify that to perpetuate the location of said corner, I did, at the exact location thereof, place a permanent marker consisting of CAST IRON MONUMENT, SITTING ON TOP OF LARGE TREE ROOT, WITH SIGN AND POST ON NORTH SIDE, which reference or witness monuments are located in the manner following: SIDE.



Revised date	Revised date	Revised date
6-21-82		
6-12-85		
7-28-88		
<del>8-10-8</del>		
7-19-93		
1-2-01		

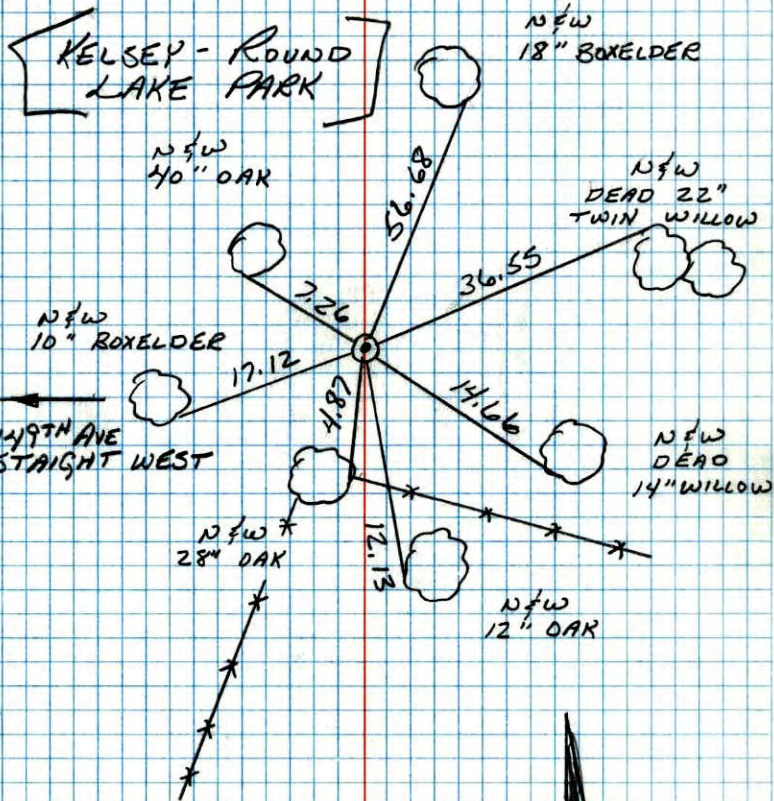




MEANDER CORNER #9 ON THE SOUTH LINE  
OF SEC 20 T32 R24

RETIED CAST IRON MONUMENT.

MON. SEATED ON TOP OF LARGE TREE ROOT.



7-28-88

B. GUETZKO  
M. DALL-H  
A. SAROYER  
98° 200' TAPE

M.C. #9 SOUTH LINE SECTION 20-T32-R24

SET CAST IRON MONUMENT FROM RESURVEY

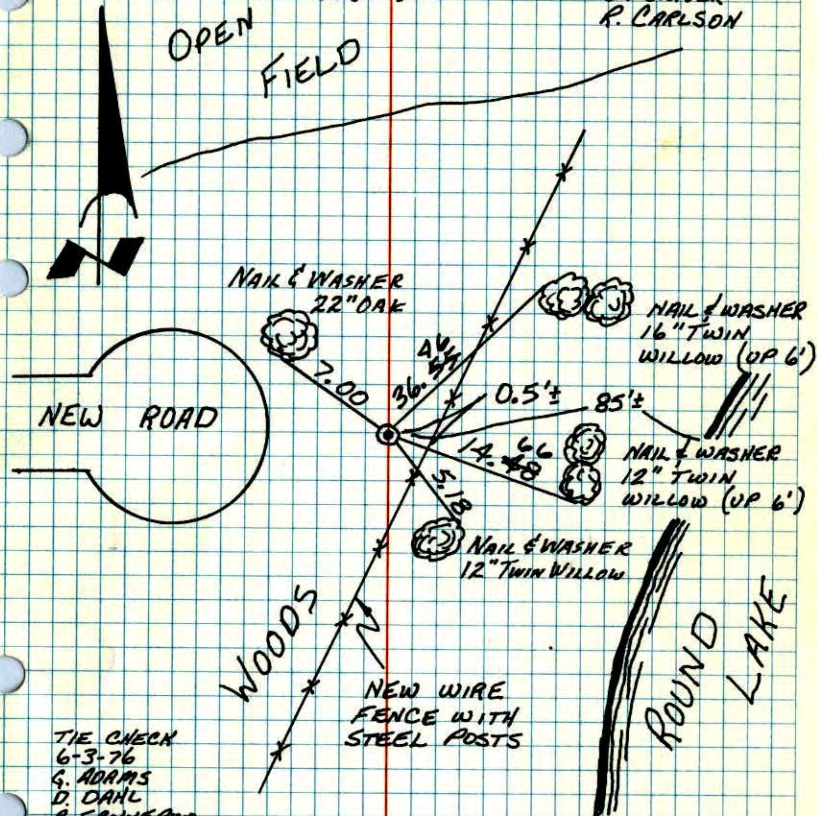
2 JUL 63

J. OLIVER

P. CARLSON

CAST IRON UP 0.3'±.

OPEN  
FIELD



TIE CHECK  
6-3-76  
G. ADAMS  
D. DAHL  
B. SANHEROD

TIE CHECK  
8-13-77  
M.D. ANDERSON  
P.W. BERTLESON  
M.J. AUNE

TIE CHECK  
6-8-79  
B. STEPHENS  
D. STEPHENS

TIE CHECK  
6-21-82  
P. ROSS  
P. HORNBY  
J. BEIER

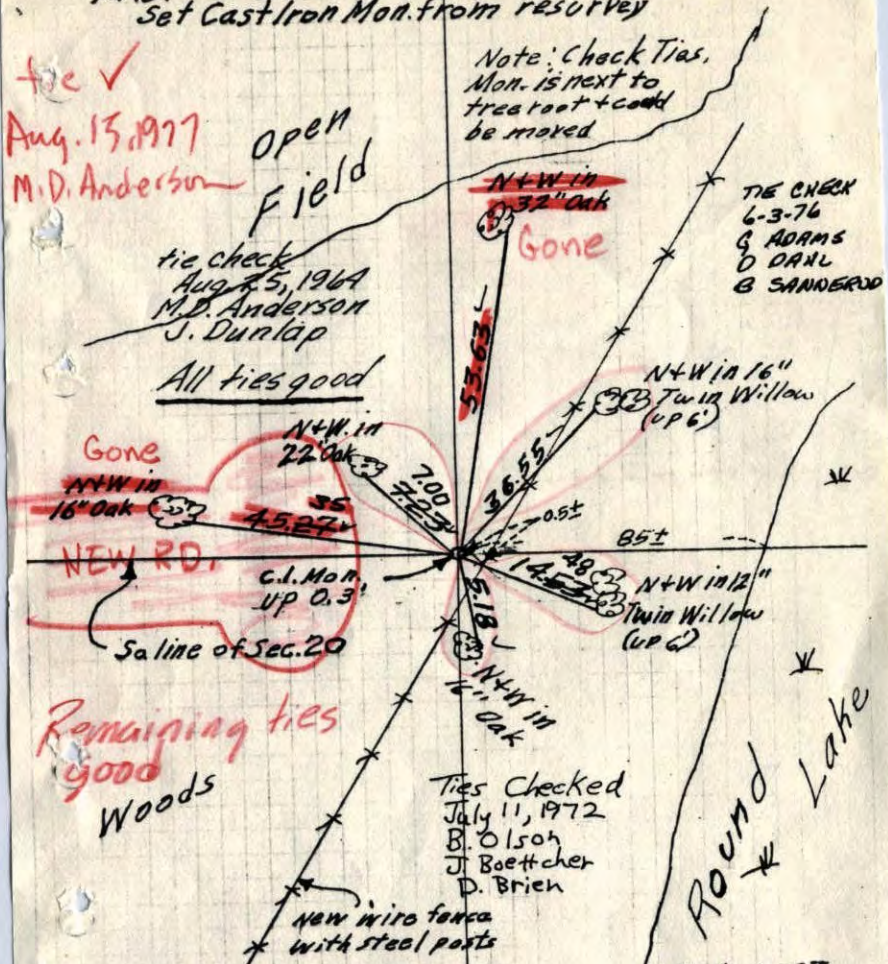
TEMPERATURE CORRECTED  
AND HORIZONTALLY  
TAPED MEASUREMENTS

ROLAND W. ANDERSON  
COUNTY SURVEYOR  
ANOKA COUNTY, MINNESOTA



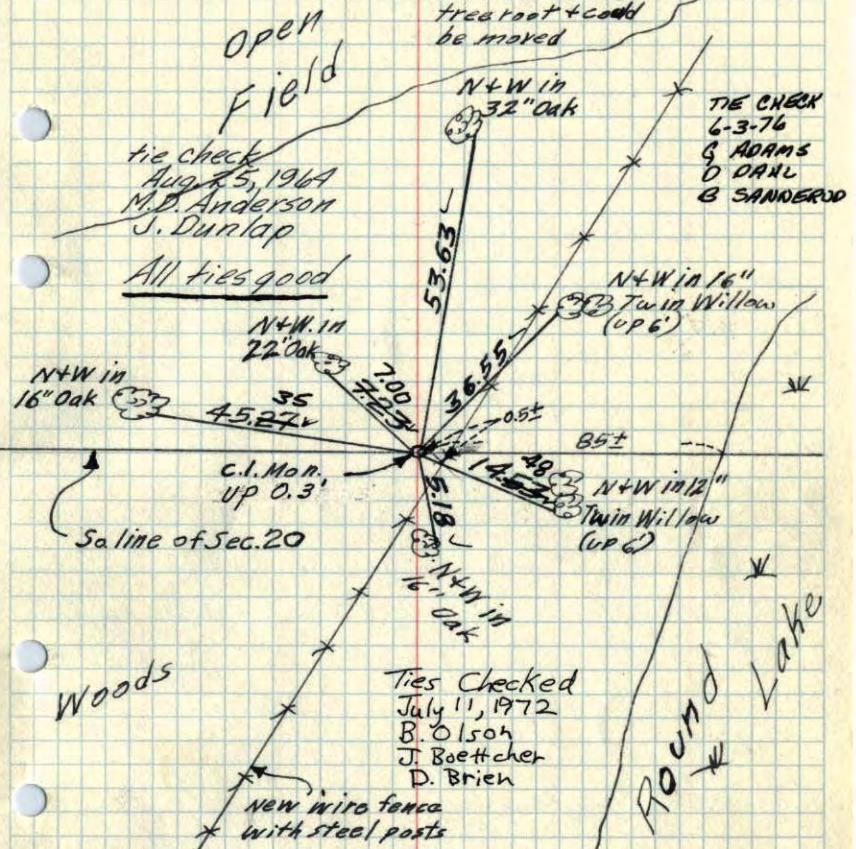
M.C. #9. So. line Sec. 20, T. 32, R. 24  
Set Cast Iron Mon. from resurvey

tie ✓  
Aug. 15, 1977  
M.D. Anderson



M.C. #9. So. line Sec. 20, T. 32, R. 24  
Set Cast Iron Mon. from resurvey

Note: Check Ties. Mon. is next to tree root & could be moved





M.C. #9 - So. line Sec. 20, T32, R24

Set Cast Iron Monument from Resurvey

Note: Check Ties,  
Mon. in next to  
tree roots could  
be moved.

Open  
Field

N  
2 July 63  
CSO #2  
J. Oliver  
R. Carlson

