

CERTIFICATE OF LOCATION OF GOVERNMENT CORNER

County of Anoka

State of Minnesota

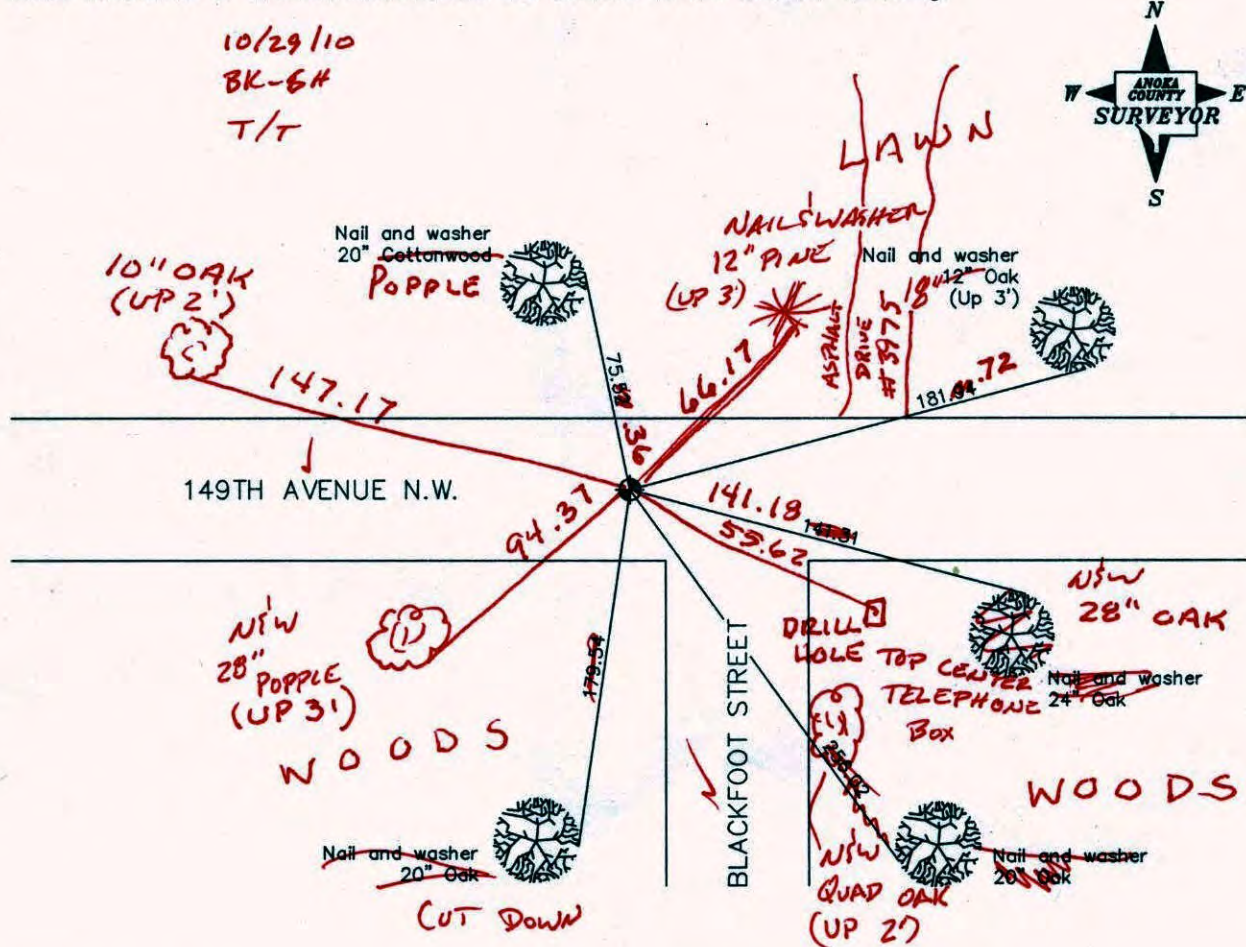
Southeast Corner of Sec. 19 Township 32 Range 24

I hereby certify that on the 1st day of July, 1963, I found the described corner which was evidenced by area resurvey

and I further certify that to perpetuate the location of said corner, I did, at the exact location thereof, place a permanent marker consisting of a cast iron monument

(FLUSH)

which reference or witness monuments are located in the manner following:



Revised date

8/19/88
7/15/93
12/15/00

N.A.D. 1983 Co-ordinates

County Project Co-ordinates	State Plane Co-ordinates
Northing 175121.0787	Y _____
Easting 474048.5245	X _____

Date 12/15/00

CERTIFICATE OF LOCATION OF GOVERNMENT CORNER

County of Anoka

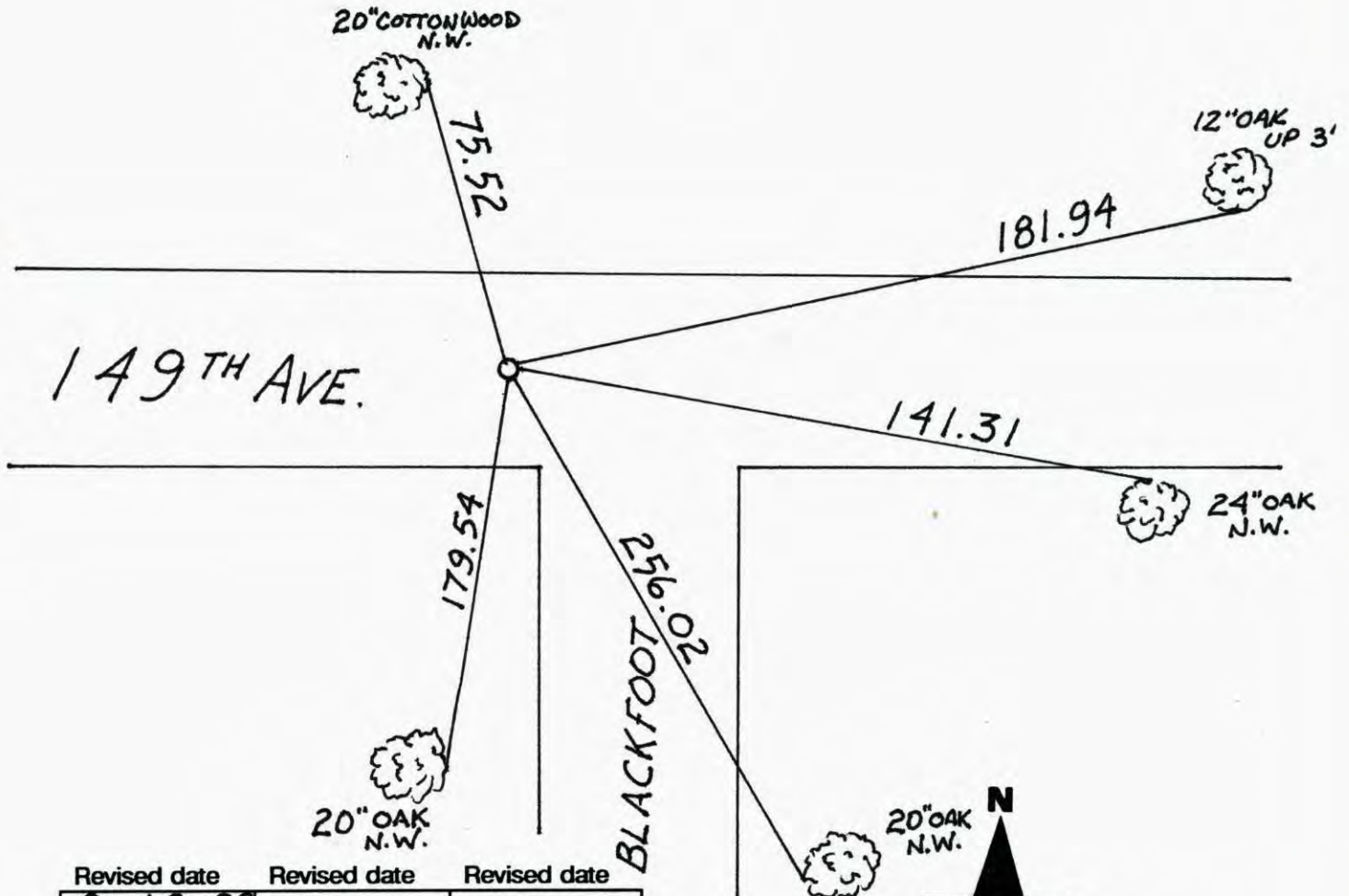
State of Minnesota

SOUTHEAST Corner of Sec. 19 Township 32 Range 24

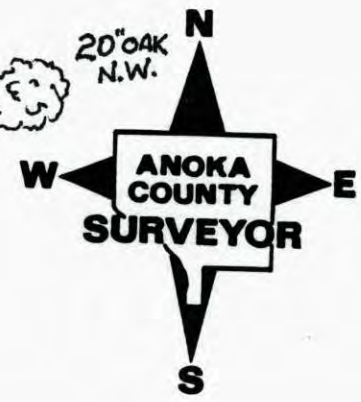
I hereby certify that on the 1 day of JULY, 1963, I found the described corner which was evidenced by AREA RESURVEY

and I further certify that to perpetuate the location of said corner, I did, at the exact location thereof, place a permanent marker consisting of CAST IRON MON.

which reference or witness monuments are located in the manner following:

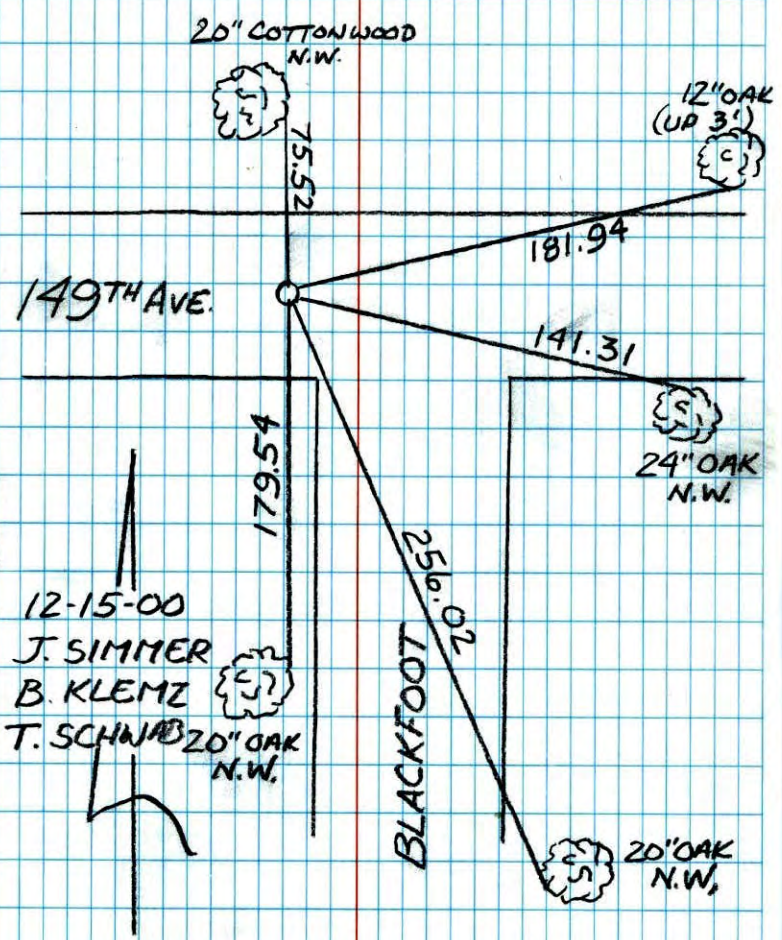


Revised date	Revised date	Revised date
8 19 88		
7 15 93		
12-15-00		



SOUTHEAST COR. SEC. 19 T32 R24
RETIED AND GPS CAST
IRON MON.

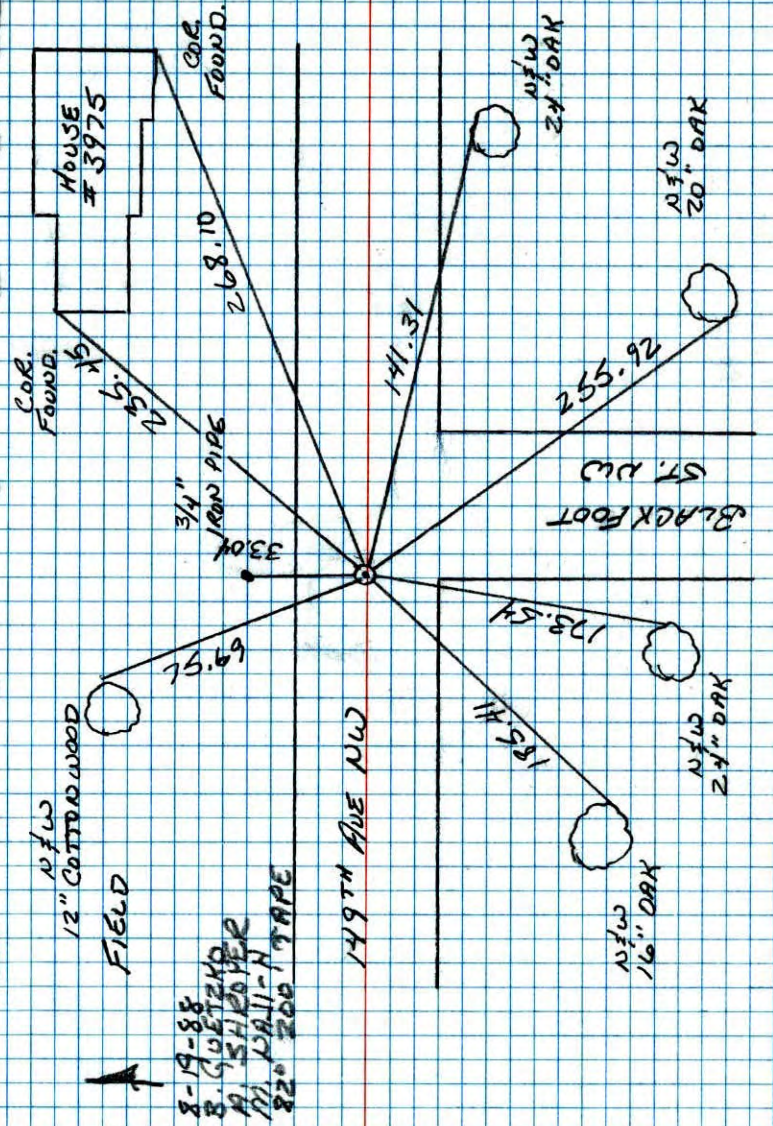
NATIONAL PRINTFAST
NO. 446



12-15-00
 J. SIMMER
 B. KLEMZ
 T. SCHWAB

S. E. CORNER SEC 19 T32 R24
RESET AND RETIED CAST IRON MON.

NO. 448
TELETYPE



8-19-88
 B. GUSTAFSON
 A. SHIBUYER
 P. WALL-H
 820 200 TAPE

S.E. COR. SEC. 19, T.32, R.24

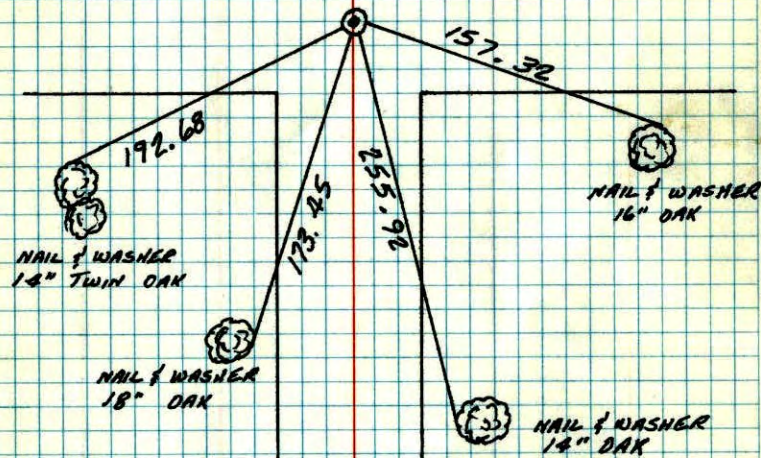
RESET CAST IRON MONUMENT.

RESET FROM PLATTING (LUND ROUND LAKE ESTATES)
AFTER ALL TIES AND MONUMENT WERE REMOVED
FOR ROAD CONSTRUCTION.



AUG. 17, 1977
M.D. ANDERSON
P.W. BERTLESON
M.J. AUNE

OPEN FIELD



TIE CHECK 6-30-82 P. ROSS P. HORNBY J. BEIER	TIE CHECK 6-7-79 B. STEPHENS D. STEPHENS
--	---

TEMPERATURE CORRECTED ROLAND W. ANDERSON
AND HORIZONTALLY COUNTY SURVEYOR
TAPED MEASUREMENTS ANOKA COUNTY, MINNESOTA

S.E. Cor. Sec. 19-T32-R24

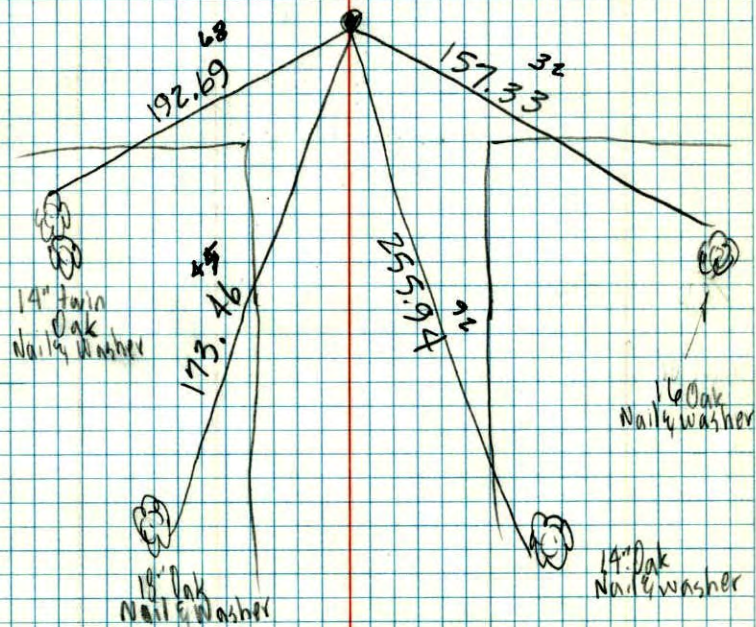
reset Cast Iron Mon.

reset from Plattig (Lund Round Lake Estates) after
all ties and Mon were removed for Rd. Const.



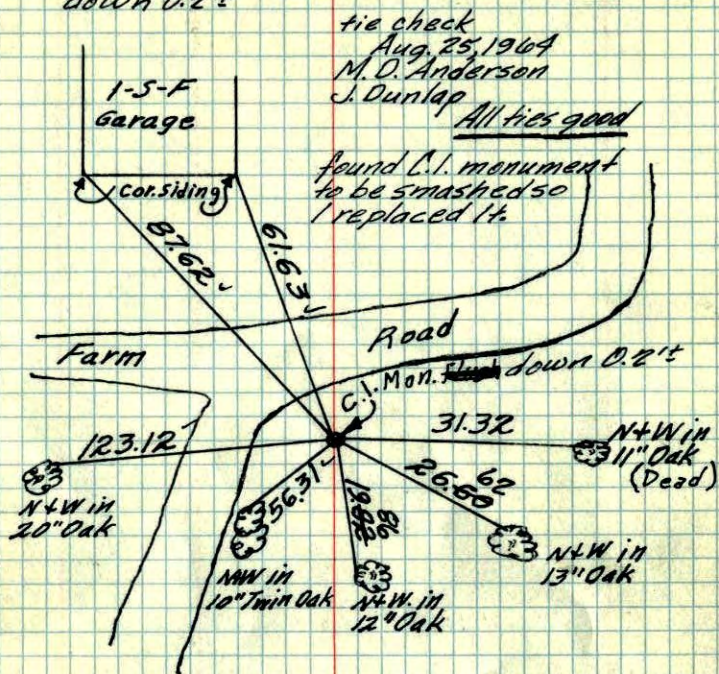
AUG. 17, 1977
M.D. ANDERSON
P.W. BERTLESON
M.J. AUNE
temp. 58°
tape 17

OPEN FIELD



14\"/>

SE Cor. Sec. 19, T. 32, R. 24
Set cast Iron Mon. from resurvey
down 0.2't



Tie Check
July 22, 1968
D. Powell
P. Pich

TEMPERATURE CORRECTED
AND HORIZONTALLY
TAPED MEASUREMENTS

TIE CHECK
6-3-76
D DAHL
G ADAMS
B SANDERUD

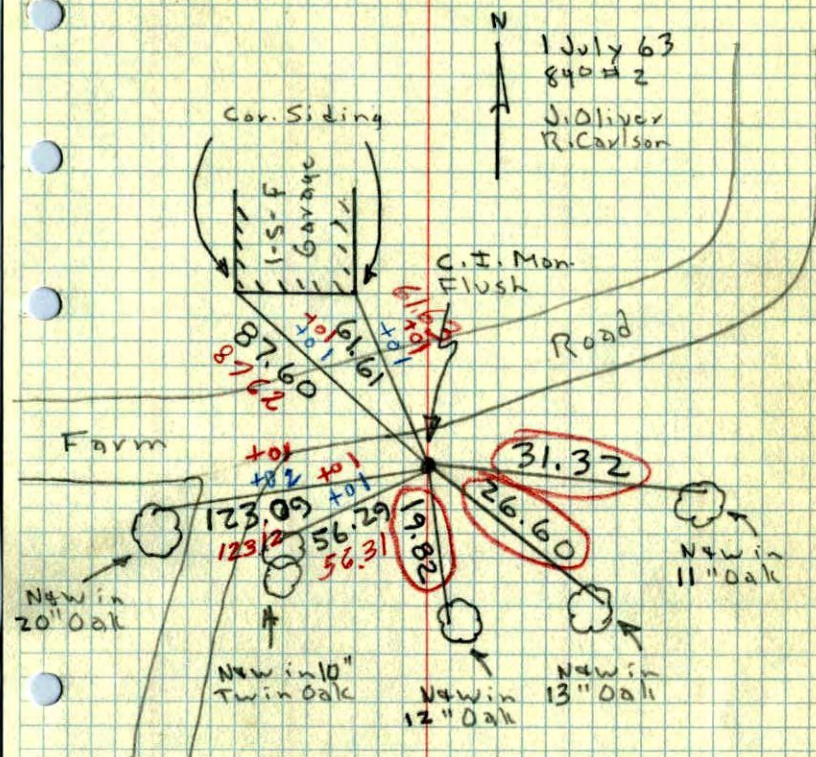
ROLAND W. ANDERSON
COUNTY SURVEYOR
ANOKA COUNTY, MINNESOTA

1 July 63
J. Oliver
R. Carlson

Ties Checked
July 5, 1972
B. Olson
R. Bauer
D. Brien

SE Cor. Sec. 19, T 32, R 24

Set Cast Iron Monument From Resurvey.



TEMPERATURE CORRECTED
AND HORIZONTALLY
TAPED MEASUREMENTS

ROLAND W. ANDERSON
COUNTY SURVEYOR
ANOKA COUNTY, MINNESOTA