

CERTIFICATE OF LOCATION OF GOVERNMENT CORNER

County of Anoka

State of Minnesota

Witness Corner of Sec. 19 Township 32 Range 24

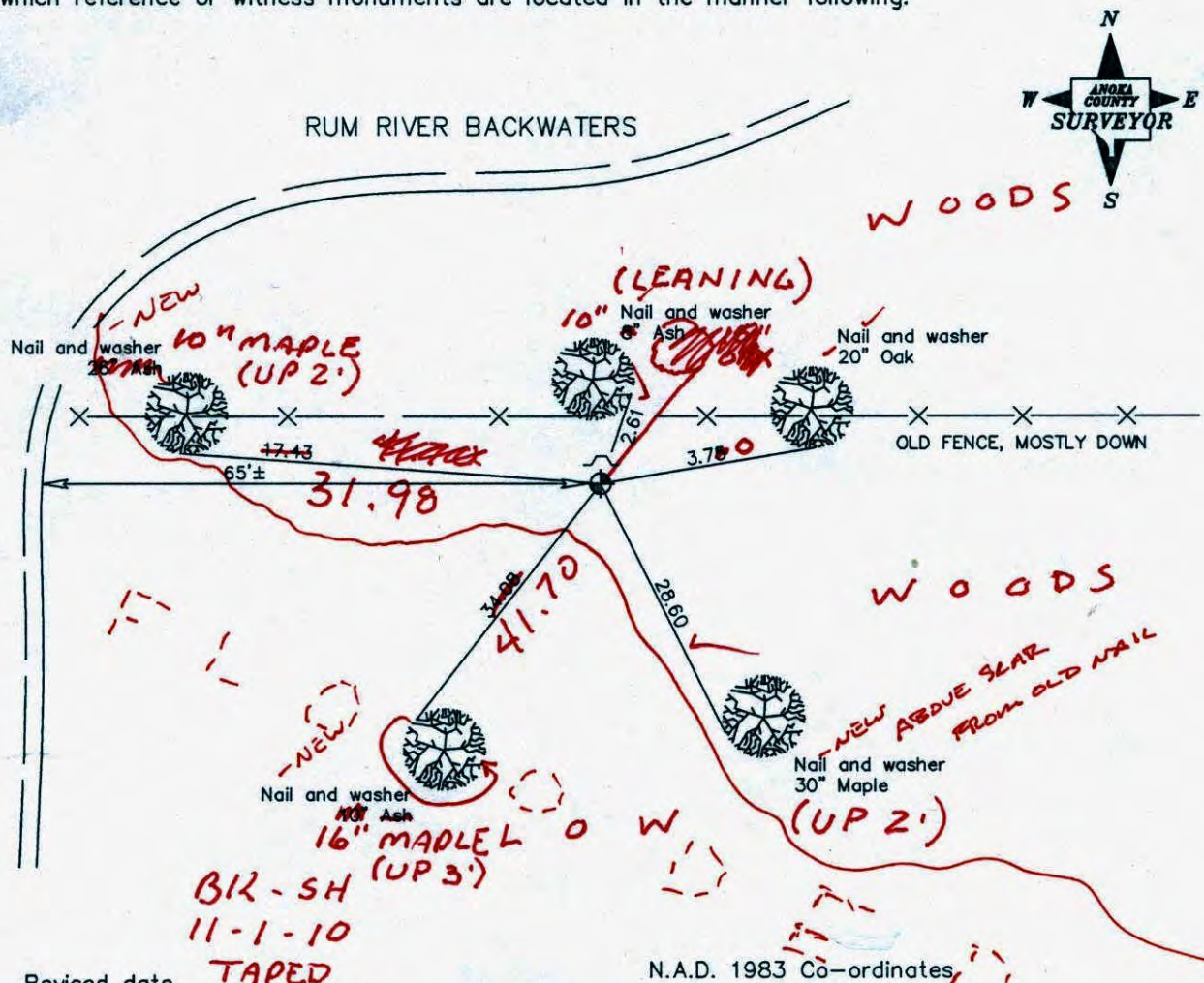
On South Line Of The S.W. 1/4 (2104' West Of The S 1/4 Corner)

I hereby certify that on the 10th day of July, 1963, I found the described corner which was

evidenced by area resurvey

and I further certify that to perpetuate the location of said corner, I did, at the exact location thereof, place a permanent marker consisting of a cast iron monument with sign and post on the north side (DOWN 0.1)

which reference or witness monuments are located in the manner following:



Revised date

8/18/88
1/13/95
4/30/02

County Project Co-ordinates	
Northing	175103.1383
Easting	469309.1672

State Plane Co-ordinates	
Y	1145741.0849
X	2782886.9820

Date 5/7/02

CERTIFICATE OF LOCATION OF GOVERNMENT CORNER

County of Anoka

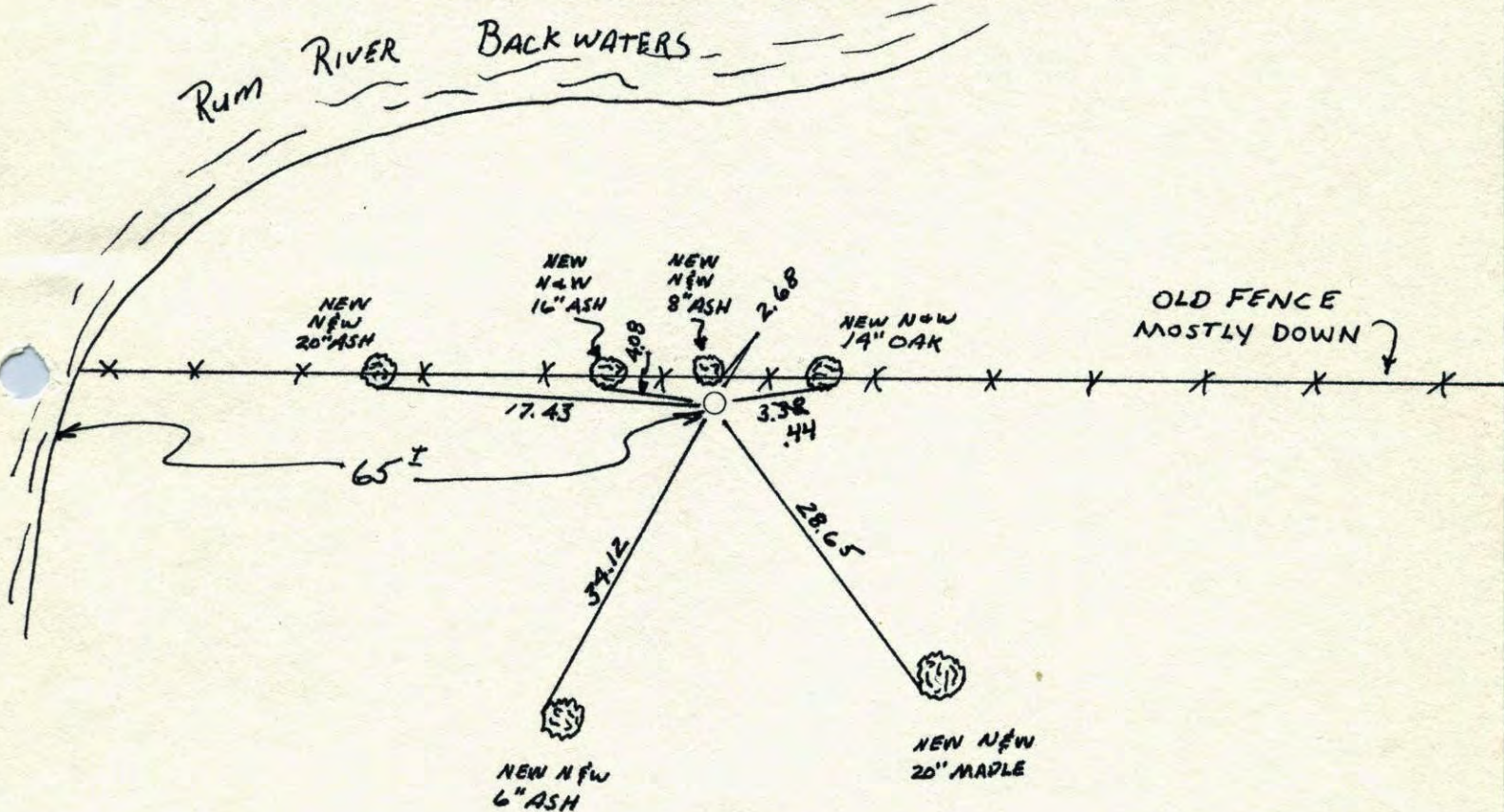
State of Minnesota

WITNESS Corner of Sec. 19 Township 32 Range 24
So. line of the SW. 1/4 (2104' WEST OF THE S 1/4 COR.)

I hereby certify that on the 10th day of July, 1963, I found the described corner which was evidenced by AREA SURVEY

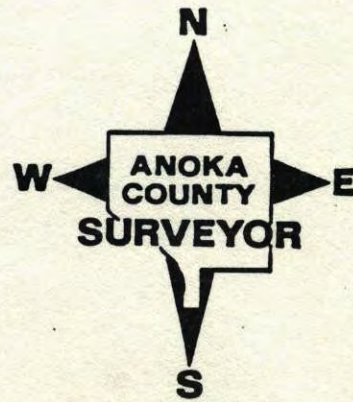
and I further certify that to perpetuate the location of said corner, I did, at the exact location thereof, place a permanent marker consisting of CAST IRON MONUMENT SIGN & POST 12' NORTH OF MONUMENT

which reference or witness monuments are located in the manner following:

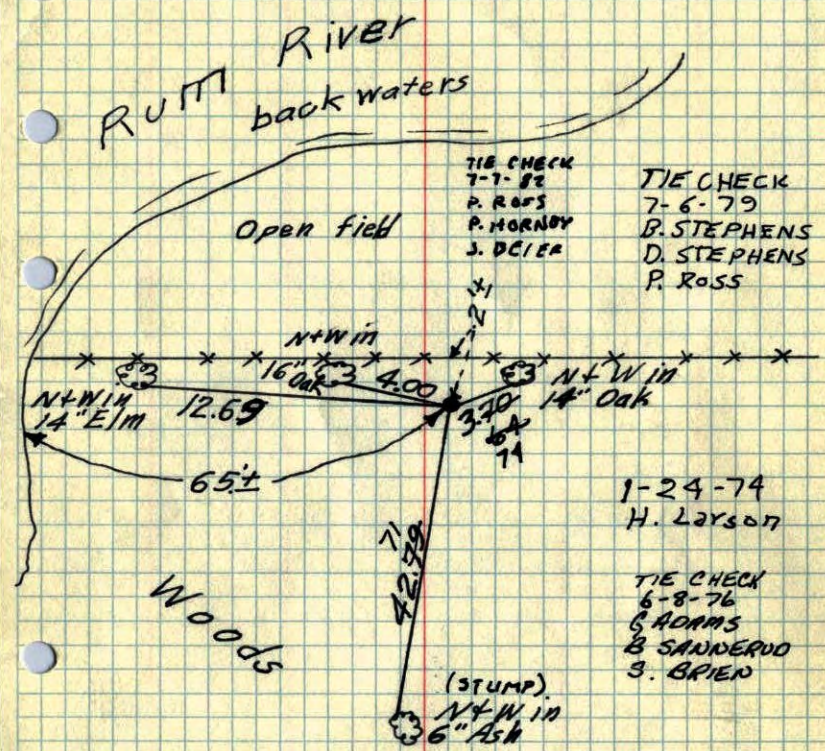


RE DRAWN 8-22-88
 Revised date Revised date Revised date

7-7-82		
6-3-85		
8-18-88		
1-13-95 HL		



W.C. on S. line of S.W. 1/4 of Sec. 19-32-24
2104' W. of S 1/4 East Iron Monument



TEMPERATURE CORRECTED
AND HORIZONTALLY
TAPED MEASUREMENTS

Wet
7/16/68

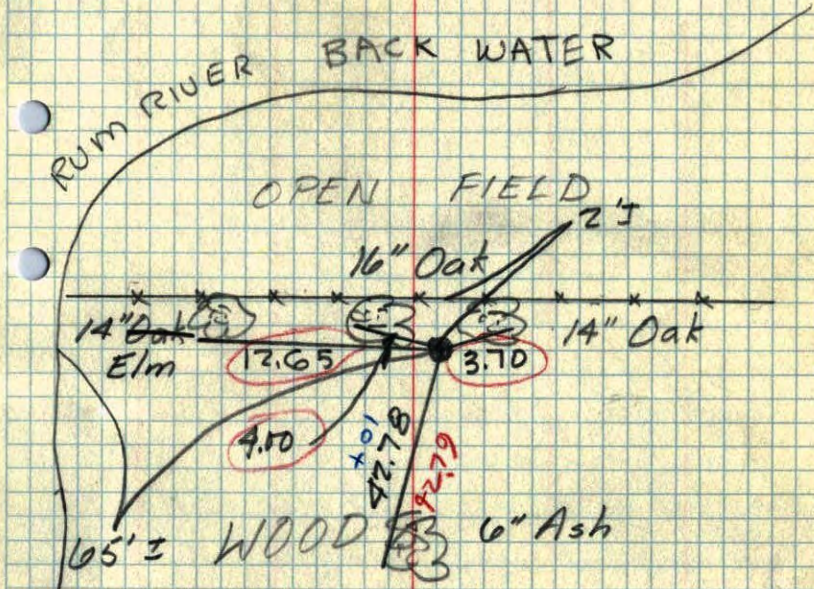
Wet
7/5/72

DRY
6-8-76

July 10, 1963
M.D. Anderson
R.M. Carlson

ROLAND W. ANDERSON
COUNTY SURVEYOR
ANOKA COUNTY, MINNESOTA

W.C. on S. line of S.W. 1/4 of
sec 19-32-24 2104' W. of S 1/4
EAST IRON MONUMENT



July 10, 1963
M.D. Anderson
R.M. Carlson
+ 75°
2