

CERTIFICATE OF LOCATION OF GOVERNMENT CORNER

County of Anoka

State of Minnesota

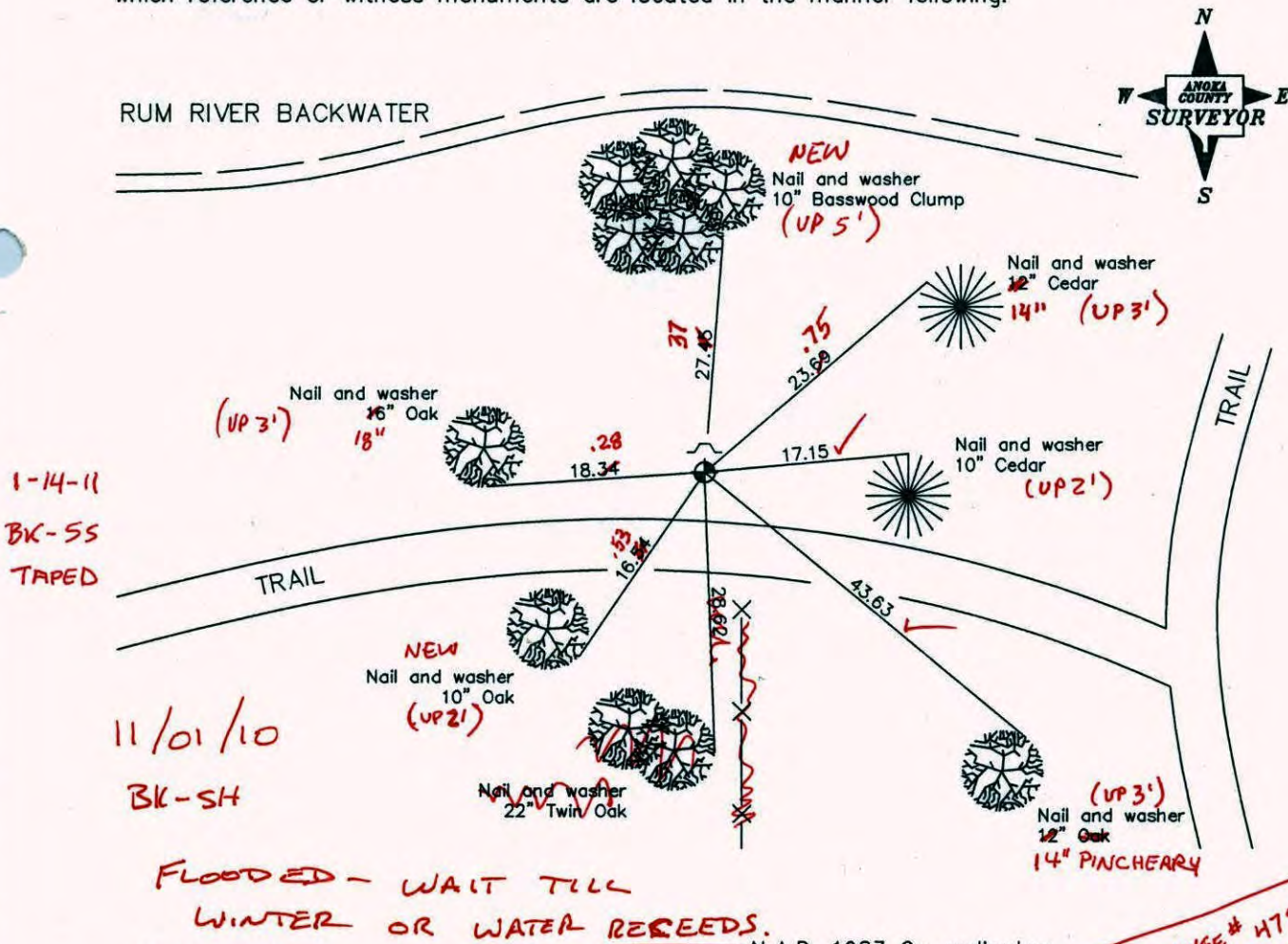
Witness Corner of Sec. 30 Township 32 Range 24

West line

I hereby certify that on the 20th day of September, 1963, I found the described corner which was evidenced by area resurvey

and I further certify that to perpetuate the location of said corner, I did, at the exact location thereof, place a permanent marker consisting of a cast iron monument with sign and post on the north side ✓ (NEXT TO CITY OF ANOKA "NO HUNTING" SIGN & POST)

which reference or witness monuments are located in the manner following:



Revised date

8/17/88
8/2/93
4/11/00

N.A.D. 1983 Co-ordinates

County Project Co-ordinates	
Northing	174560.8686
Easting	468587.4145

State Plane Co-ordinates	
Y	_____
X	_____

Date 4/11/00

HOUSE # 4790
 174th LA. N.W.

CERTIFICATE OF LOCATION OF GOVERNMENT CORNER

County of Anoka

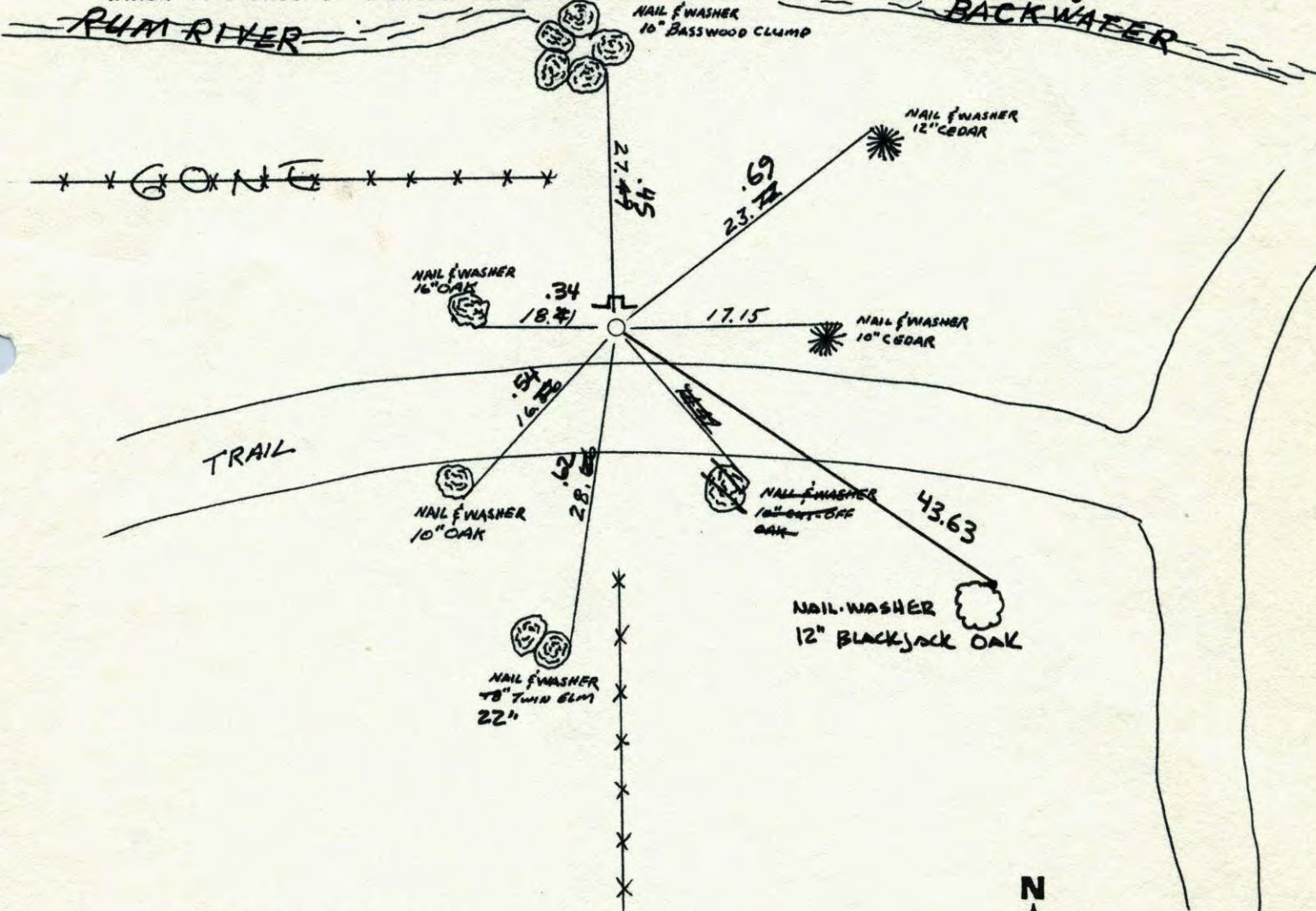
State of Minnesota

WITNESS WEST LINE Corner of Sec. 30 Township 32 Range 24

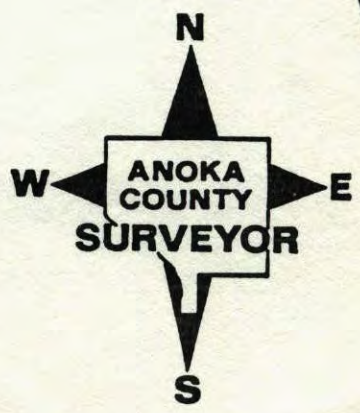
I hereby certify that on the 20TH day of SEPTEMBER, 1963, I found the described corner which was evidenced by AREA RESURVEY

and I further certify that to perpetuate the location of said corner, I did, at the exact location thereof, place a permanent marker consisting of CAST IRON MONUMENT SIGN & POST ON NTH SIDE

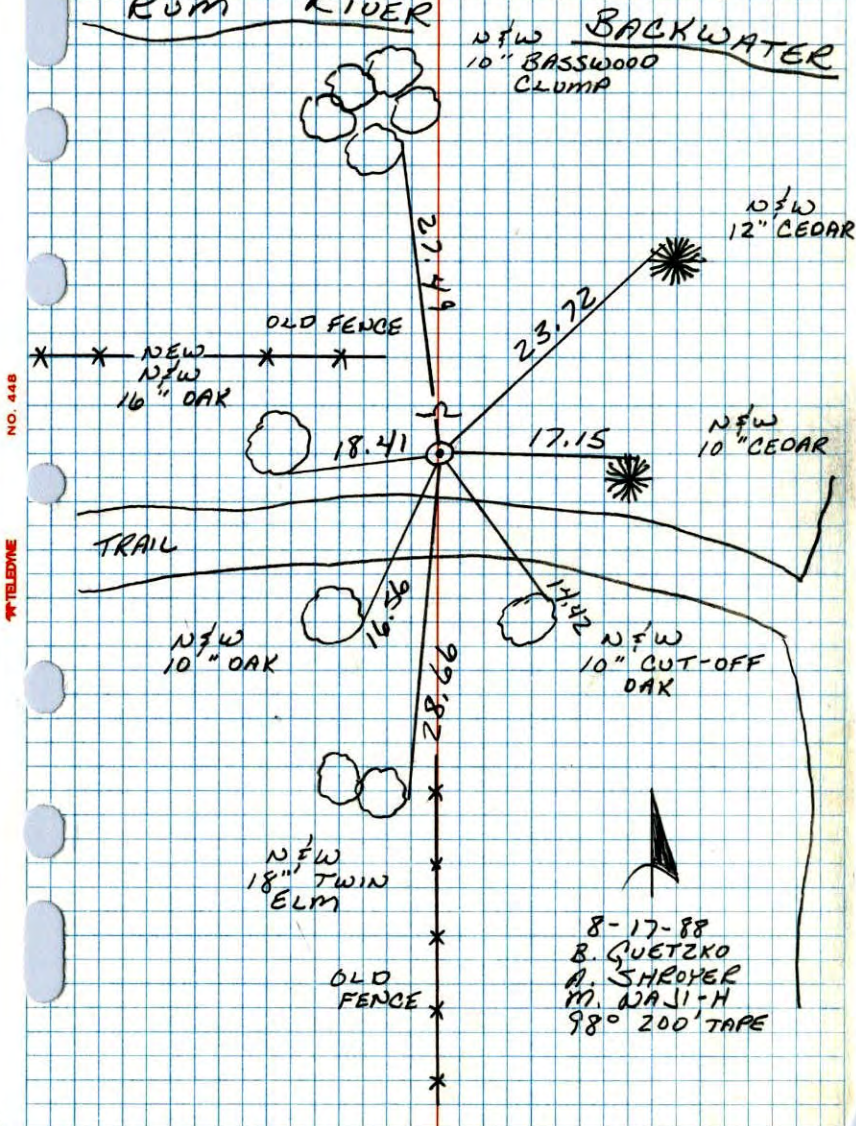
which reference or witness monuments are located in the manner following:



Revised date	Revised date	Revised date
7-6-79		
6-21-82		
6-3-85		
8-17-88		
8-2-93		
4-11-00		

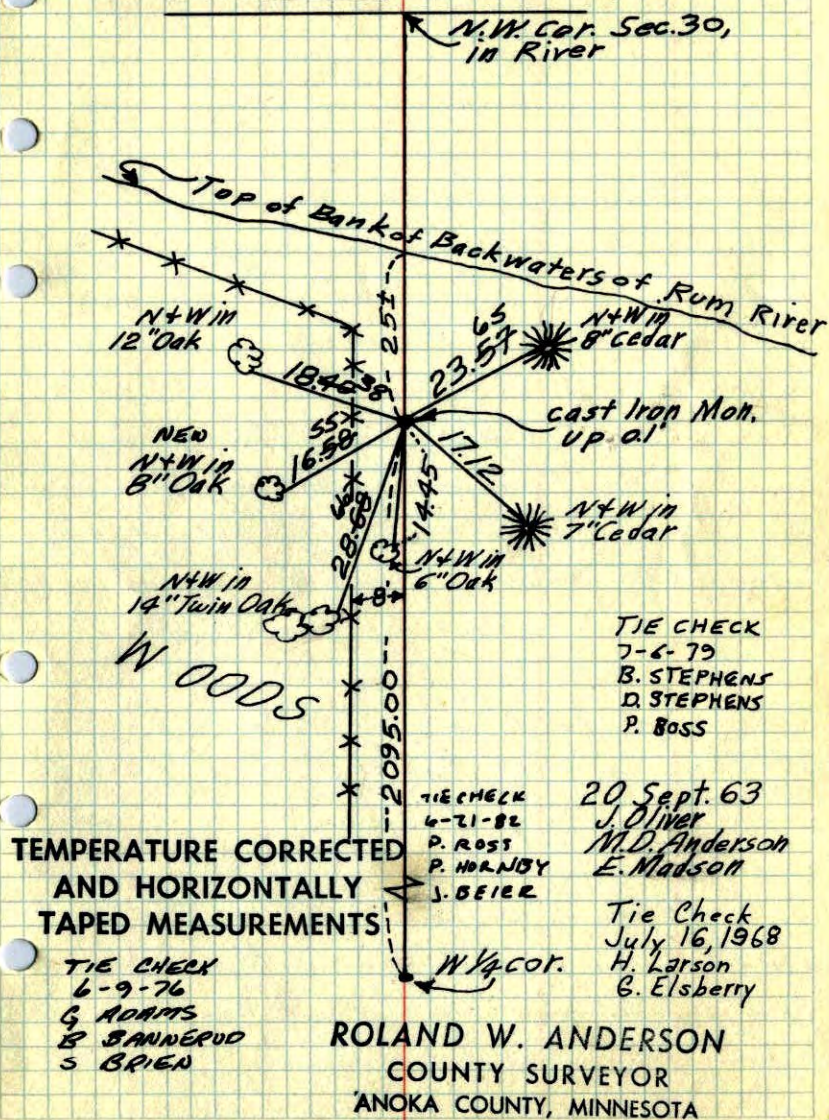


WITNESS CORNER ON THE WEST LINE
OF THE NW 1/4 SEC 30 T32 R24
RUM RIVER



Witness corner on West line Sec. 30,
T. 32, R. 24.

Set cast iron mon. from resurvey.



Witness Corner on West line Sec. 30, T32, R24

Set cast Iron Monument From Resurvey.

