

CERTIFICATE OF LOCATION OF GOVERNMENT CORNER

County of Anoka

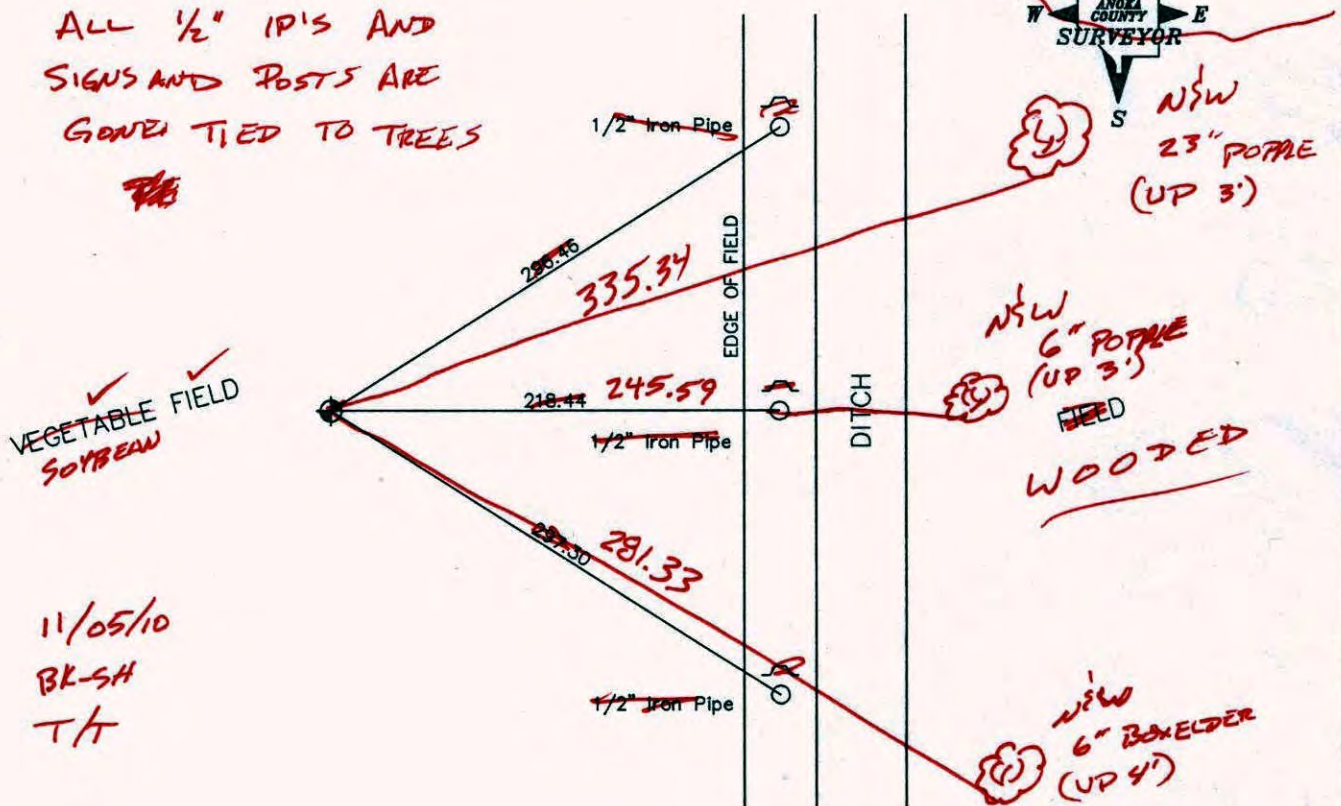
State of Minnesota

East $\frac{1}{4}$ Corner of Sec. 29 Township 32 Range 24

I hereby certify that on the 15th day of July, 1970, I found the described corner which was evidenced by area resurvey

and I further certify that to perpetuate the location of said corner, I did, at the exact location thereof, place a permanent marker consisting of a cast iron monument down 2'± with sign and post by 1/2" iron pipes (MONUMENT 0.25 mi± SOUTH OF NORTH EDGE OF FIELD.)

which reference or witness monuments are located in the manner following:



Revised date

6/6/85
9/9/88
7/27/93

N.A.D. 1983 Co-ordinates

County Project Co-ordinates	State Plane Co-ordinates
Northing 172436.5658	Y _____
Easting 479292.0765	X _____

Date _____

CERTIFICATE OF LOCATION OF GOVERNMENT CORNER

County of Anoka

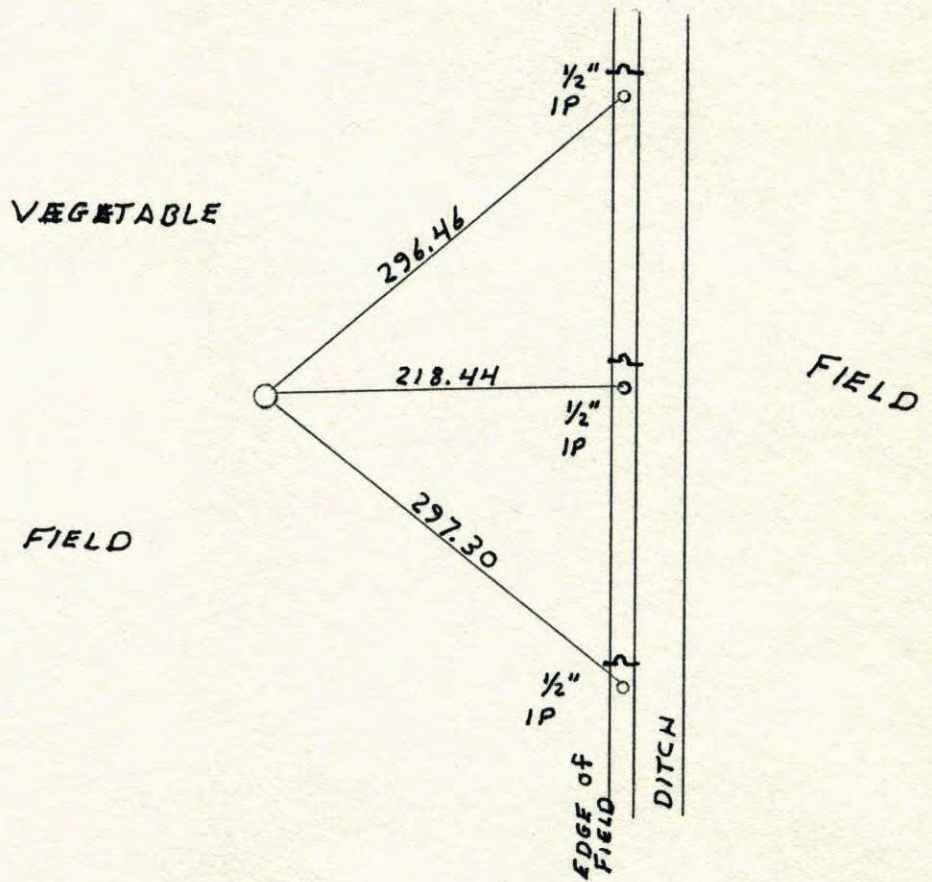
State of Minnesota

EAST ONE QUARTER Corner of Sec. 29 Township 32 Range 24

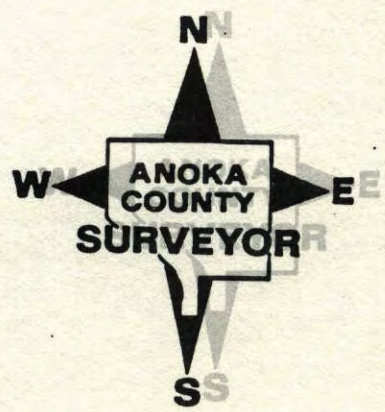
I hereby certify that on the 15 day of JULY, 1970, I found the described corner which was evidenced by AREA RESURVEY REPLACED AND RETIED 9-9-88

and I further certify that to perpetuate the location of said corner, I did, at the exact location thereof, place a permanent marker consisting of CAST IRON MONUMENT
DOWN 2'± SIGN AND POSTS BY 1/2" IRON PIPES

which, reference, or witness monuments are located in the manner following:



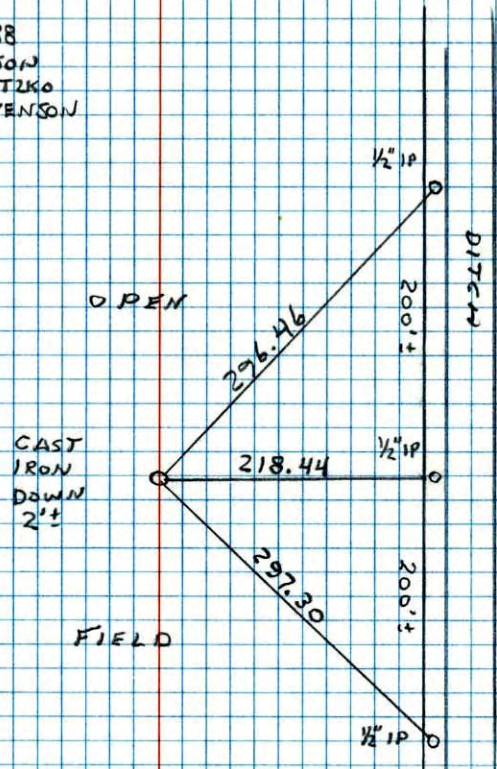
Revised date	Revised date	Revised date
6-29-82		
6-6-85		
9-9-88 <small>UL</small>		
7-27-93		



E
W 1/4 CORNER SECTION 28 T32 R24

RESET CAST IRON MONUMENT FROM AREA
RESURVEY SIGN + POSTS BY I.P.S.

9-9-88
W. LARSON
B. GRETZKO
J. STEVENSON

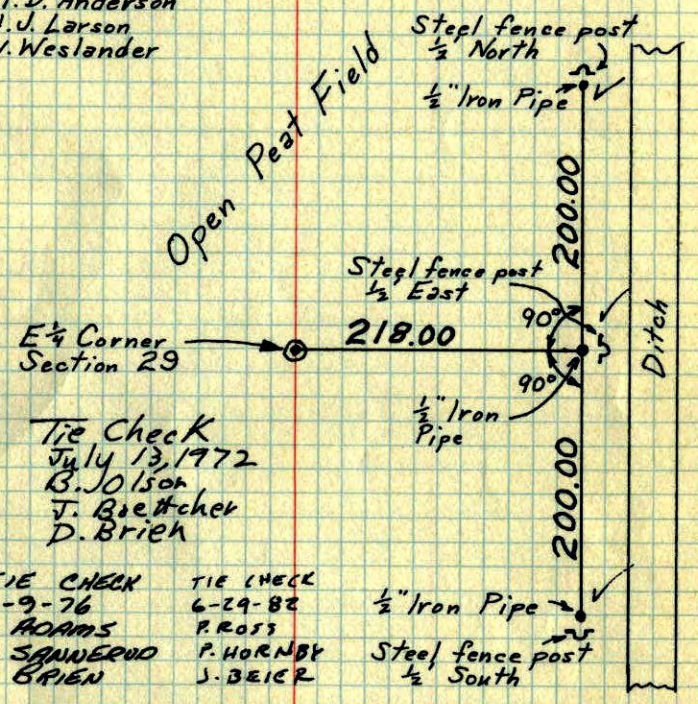


NO. 448
TELETYPE

E 1/4 Cor. Sec. 29-T32-R24

Set 1/4 Corner (spike) 1/2 way and on line on
North-South Section Line. Set Iron Pipe
ties along ditch.

July 15, 1970
M.D. Anderson
H.J. Larson
W. Weslander



Tie Check
July 13, 1972
B. JOHNSON
T. BRETTCHER
D. BRIEHL

TIE CHECK 6-9-76 G. ADAMS B. SANDERUD S. BRIEN	TIE CHECK 6-29-82 P. ROSS P. HORNBY J. BEIER
--	--

TIE CHECK
6-11-79
D. STEPHENS
D. STEPHENS
P. ROSS

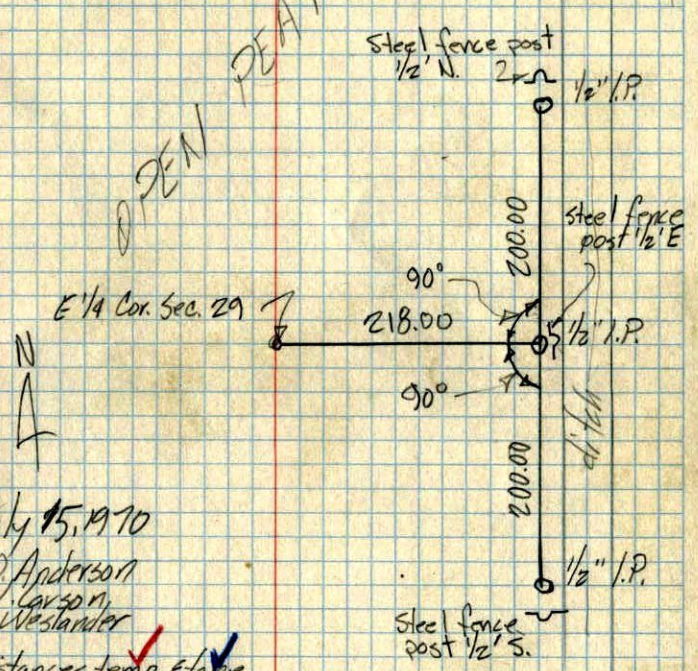
TEMPERATURE CORRECTED
AND HORIZONTALLY
TAPED MEASUREMENTS

ROLAND W. ANDERSON
COUNTY SURVEYOR
ANOKA COUNTY, MINNESOTA

E 1/4 Cor. Sec. 29-T32-R24

set 1/4 Cor. 1/2 way & on line
on N & S. Sec. line

Set iron pipe ties
along ditch



July 15, 1970

M.D. Anderson
H.V. Larson
W. Westlander

distances temp. & slope
corrected in field