

1st East of Hanson

CERTIFICATE OF LOCATION OF GOVERNMENT CORNER

County of Anoka

State of Minnesota

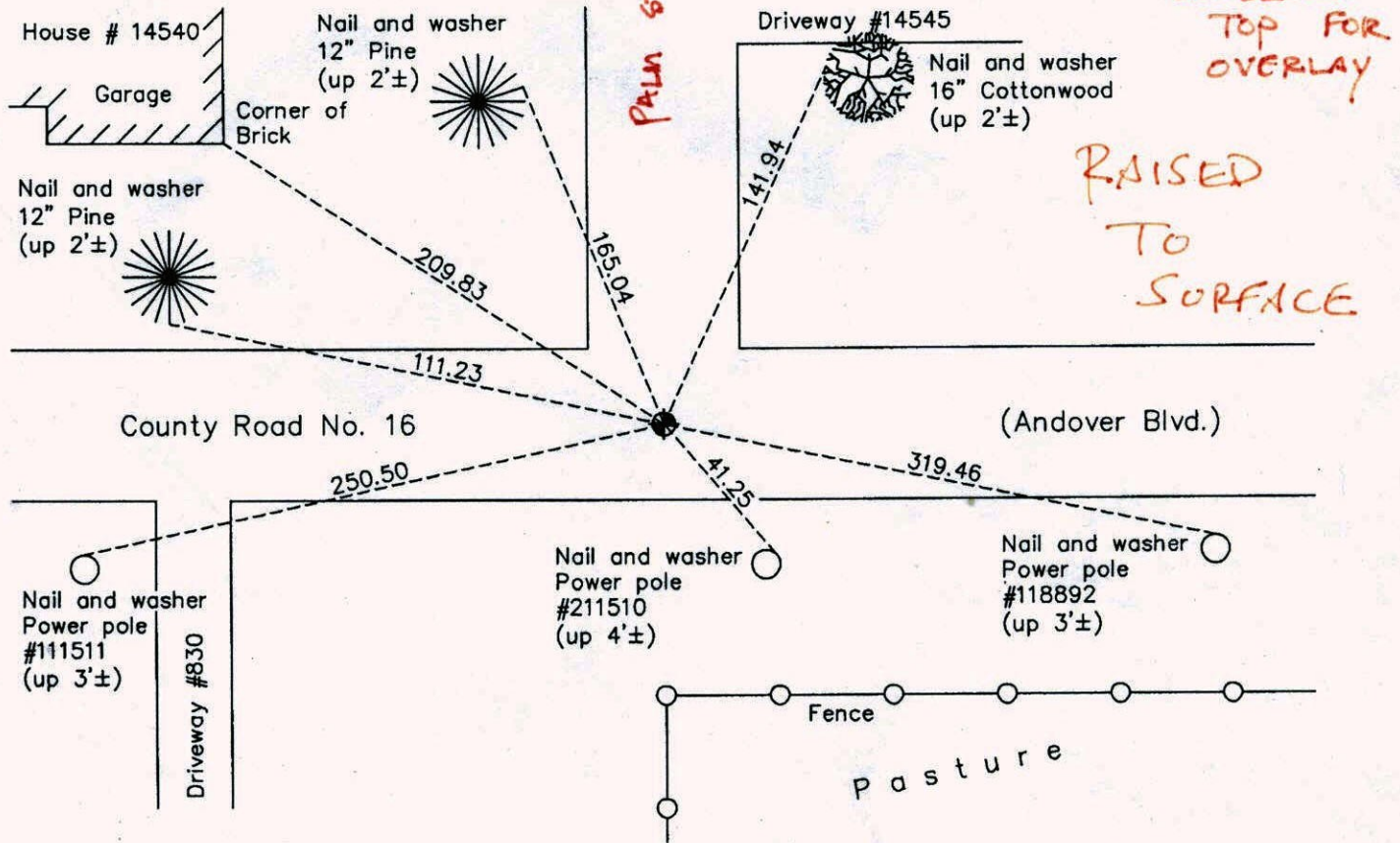
East 1/4 Corner of Sec. 26 Township 32 Range 24

On the 4th day of January, 1962, the described corner was evidenced by a 1/2" iron pipe

and to perpetuate the location of said corner, at the exact location thereof, a permanent marker was placed consisting of a cast iron monument

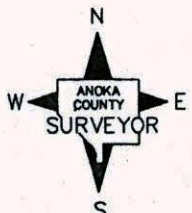
AND on the 20th day of October, 2010, said permanent marker was found flush with the surface and the ties were updated

Updated reference ties are as shown below.



5-24-12
JS SH
LOOSENED
TOP FOR
OVERLAY

RAISED
TO
SURFACE



N.A.D. 1983 Coordinates
(1996 Adjustment)

| County Project Coordinates | |
|----------------------------|-------------|
| Northing | 172252.3378 |
| Easting | 495127.6276 |
| Date | 10/02/00 |

Revision Date
6/08/11

I hereby certify that this United States public land survey monument record is correct and complete to the best of my knowledge and belief.

Larry D. Hoium Date 6/08/11
 Larry D. Hoium, Anoka County Surveyor
 Minnesota License Number 18165

Co Rd 16 from

Sec 25

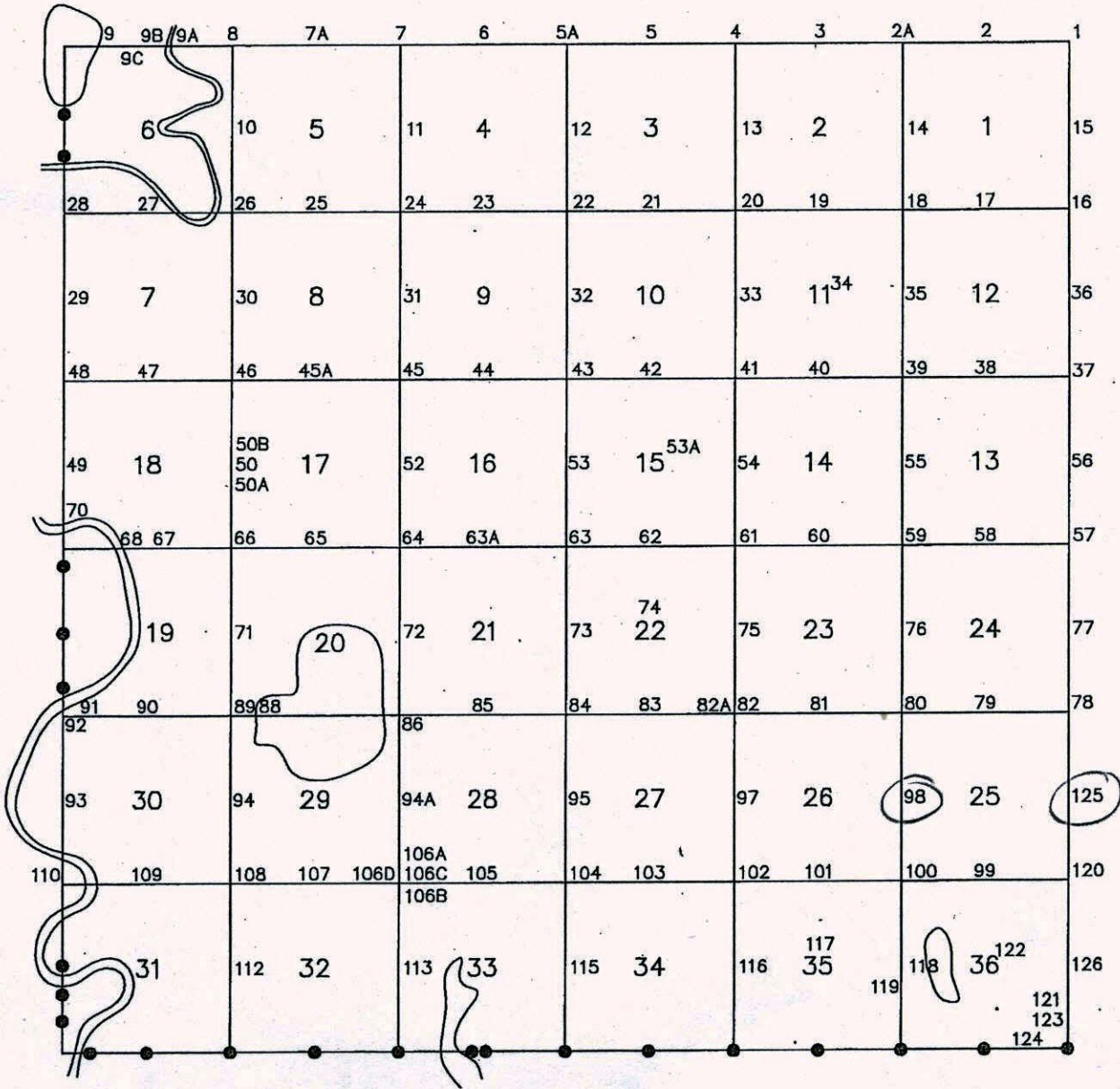
5/22/12

CSAH 78 to TH 65

→ Overlay only

ANDOVER T-32 R-24

LOOSEN



CERTIFICATE OF LOCATION OF GOVERNMENT CORNER

County of Anoka

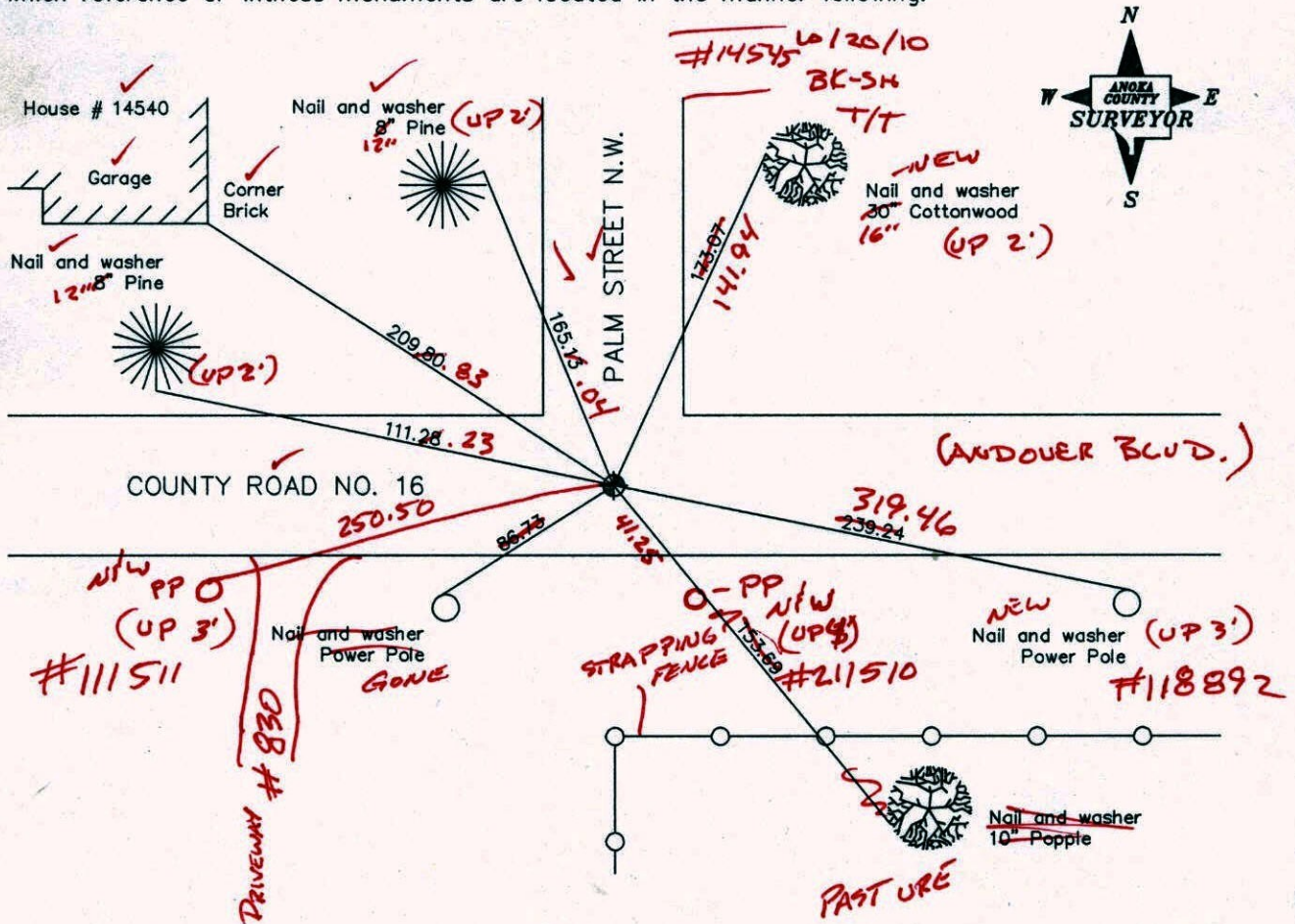
State of Minnesota

East 1/4 Corner of Sec. 26 Township 32 Range 24

I hereby certify that on the 4th day of January, 1962, I found the described corner which was evidenced by a 1/2" iron pipe

and I further certify that to perpetuate the location of said corner, I did, at the exact location thereof, place a permanent marker consisting of a cast iron monument (FLUSH)
(NEEDS COLD PATCH)

which reference or witness monuments are located in the manner following:



Revised date

| |
|---------|
| 8/2/88 |
| 7/19/93 |
| 10/2/00 |
| |
| |

N.A.D. 1983 Co-ordinates

| County Project Co-ordinates | State Plane Co-ordinates |
|-----------------------------|--------------------------|
| Northing <u>172252.3378</u> | Y _____ |
| Easting <u>495127.6276</u> | X _____ |

Date 10/2/00

CERTIFICATE OF LOCATION OF GOVERNMENT CORNER

County of Anoka

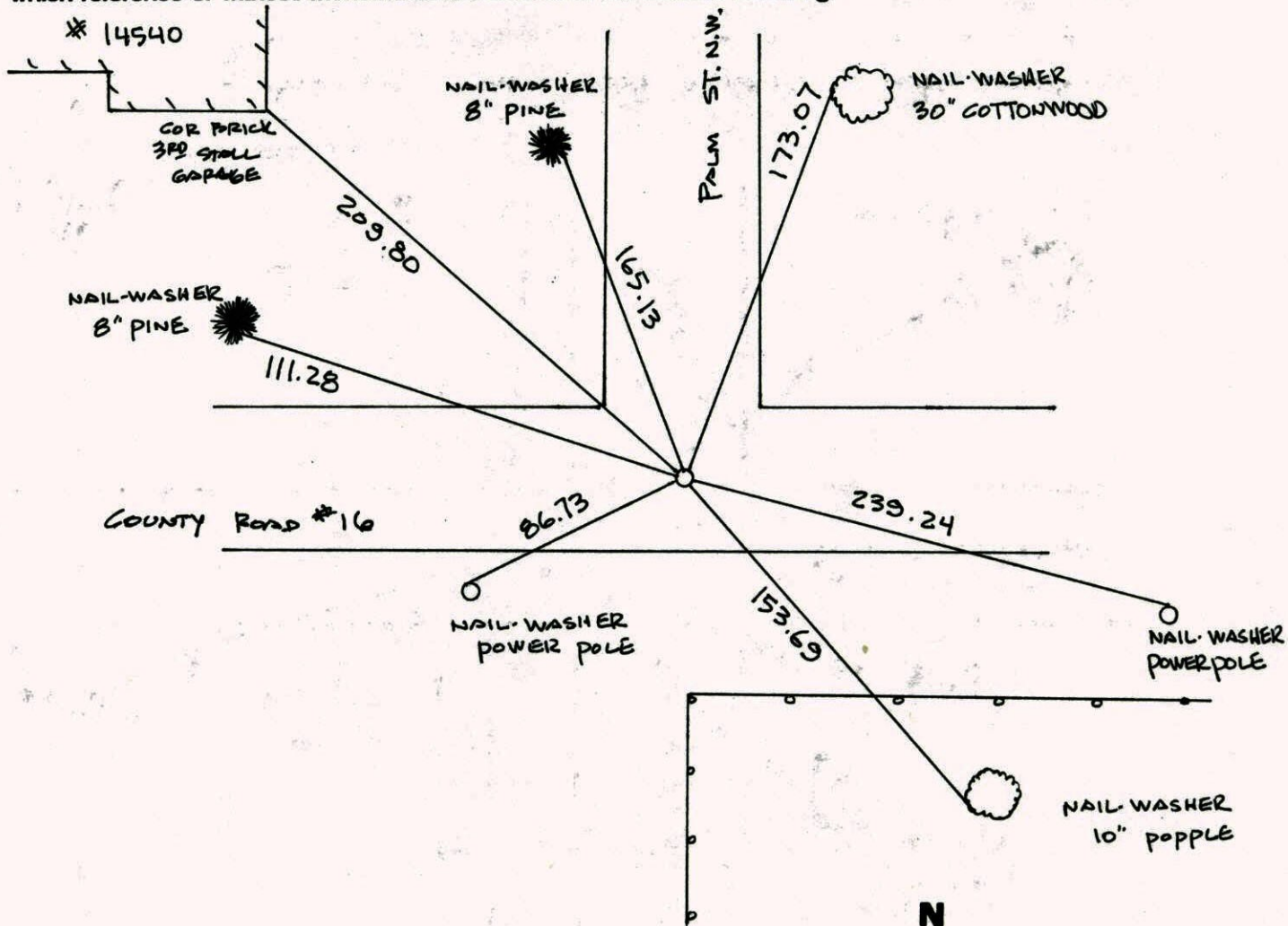
State of Minnesota

EAST 1/4 Corner of Sec. 26 Township 32 Range 24

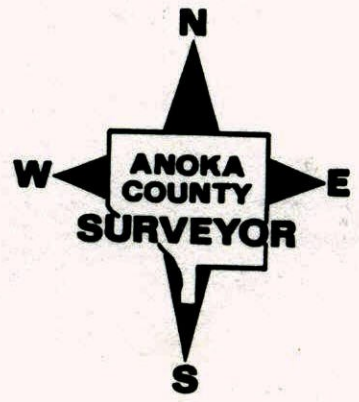
I hereby certify that on the 4TH day of JANUARY, 19 62, I found the described corner which was evidenced by 1/2" IRON PIPE

and I further certify that to perpetuate the location of said corner, I did, at the exact location thereof, place a permanent marker consisting of CAST IRON MONUMENT

which reference or witness monuments are located in the manner following:

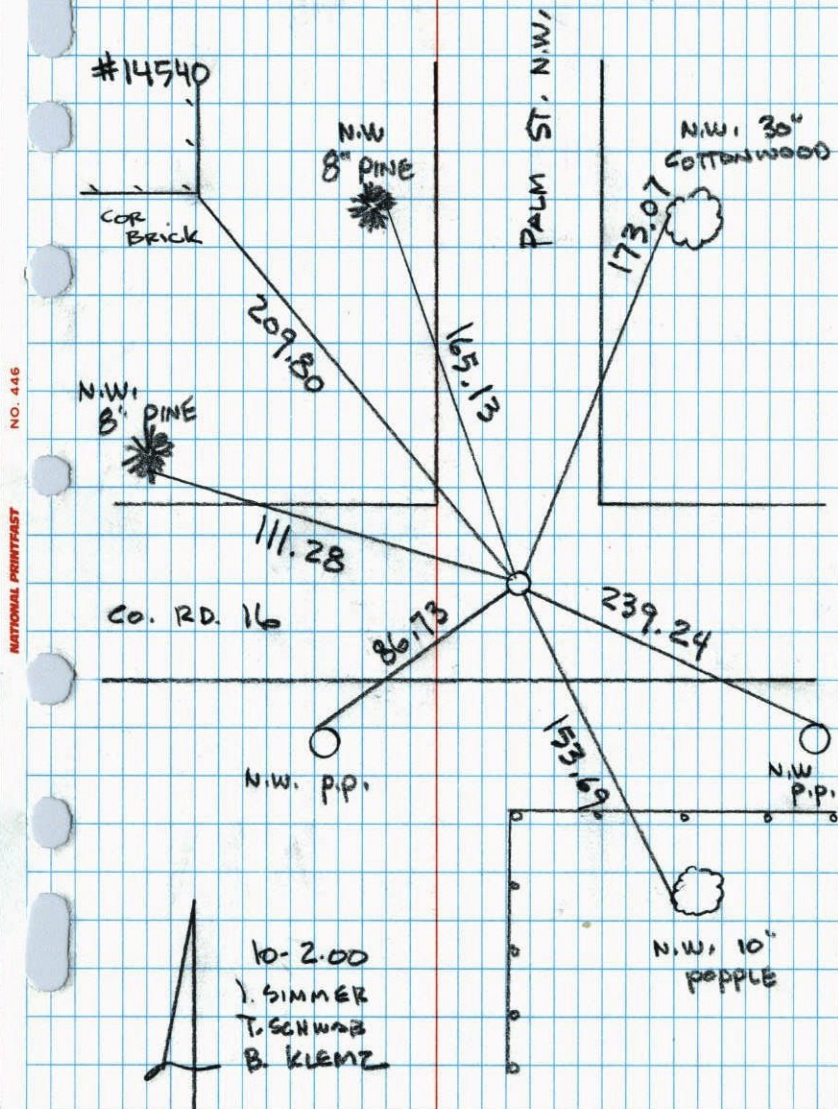


| Revised date | Revised date | Revised date |
|--------------|--------------|--------------|
| 6-30-82 | | |
| 6-4-85 | | |
| 8-2-88 | | |
| 7-19-93 | | |
| 10-2-00 | | |
| | | |
| | | |



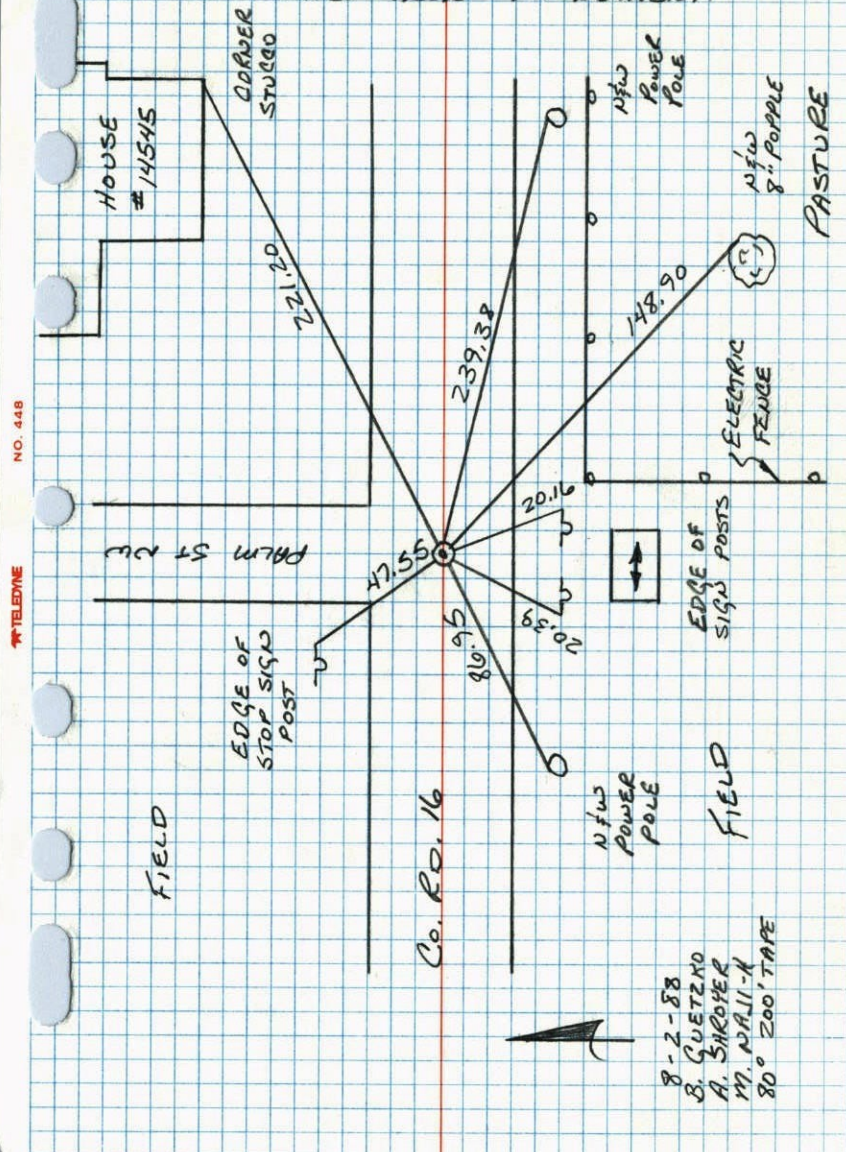
EAST 1/4 COR. SEC 26 T 32 R 24

GPS & RETIED CAST IRON MON.



E 1/4 CORNER SEC 26 T 32 R 24

RETIED CAST IRON MONUMENT.



E 1/4 Cor Sec 26-32-24 Grow

Found 1/2" iron in E Andover Road. Set by
N.C. Heium. Iron is flush with blacktop and
1/2" No. of E stripe. PK's 2.00' North & East

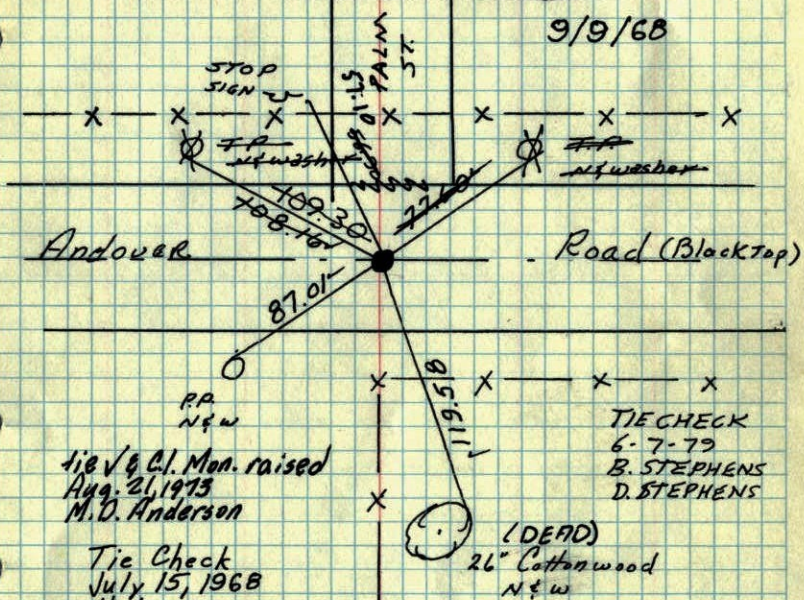
4 Jan 1962

R.O. Freeman
M.D. Anderson

Ties checked
Aug. 17, 1964
M.D. Anderson
J. Dunlop

Set Cast Iron Monument flush.

9/9/68



Tie V & Cl. Mon. raised
Aug. 21, 1973
M.D. Anderson

Tie Check
July 15, 1968
H. Larson
G. Elsberry

Tie Check
7/16/72
B. Olson
J. Boettcher
D. Brien

TIE CHECK
6-9-76
G. ADAMS
B. SANNERUD
S. BRIEN

TIE CHECK
6-30-80
P. ROSS
P. HORNBY
J. BEIER

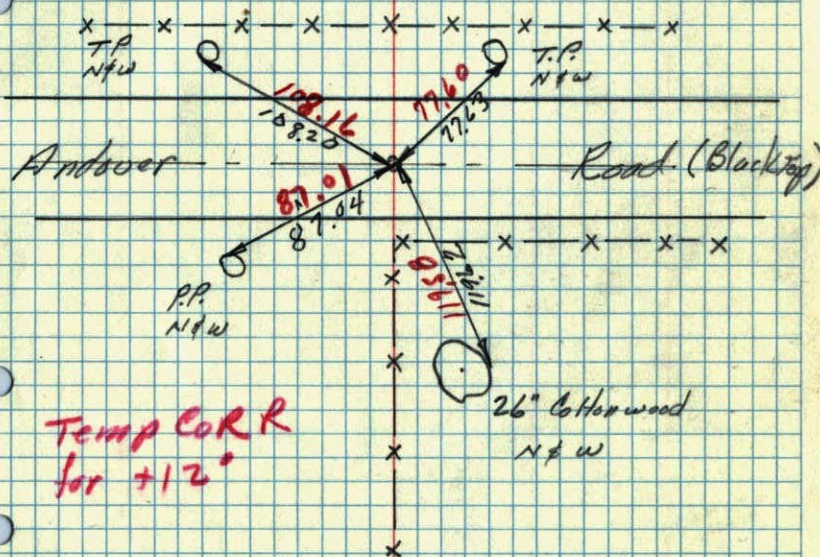
ROLAND W. ANDERSON
COUNTY SURVEYOR
ANOKA COUNTY, MINNESOTA

TEMPERATURE CORRECTED
AND HORIZONTALLY
TAPED MEASUREMENTS

4 Jan. 1962
Freeman Anderson
+ 12

E 1/4 Cor Sec 26-32-24 Grow

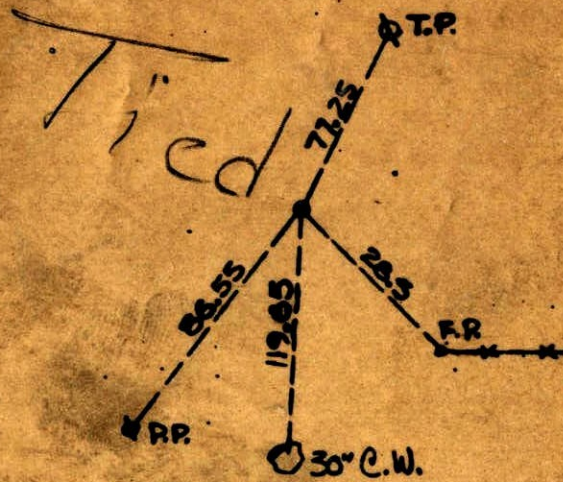
Found 1/2" iron pipe in E Andover Road
Set by N.C. Heium.



Temp COR R
for +12"

E. COR. SEC. 26, T. 32, R. 24⁶⁴

NCH



Should Be Re-tied
we have no ties

N. C. HOIUM
AND ASSOCIATES, INC.
LAND SURVEYORS

ANOKA, MINNESOTA