

CERTIFICATE OF LOCATION OF GOVERNMENT CORNER

County of Anoka

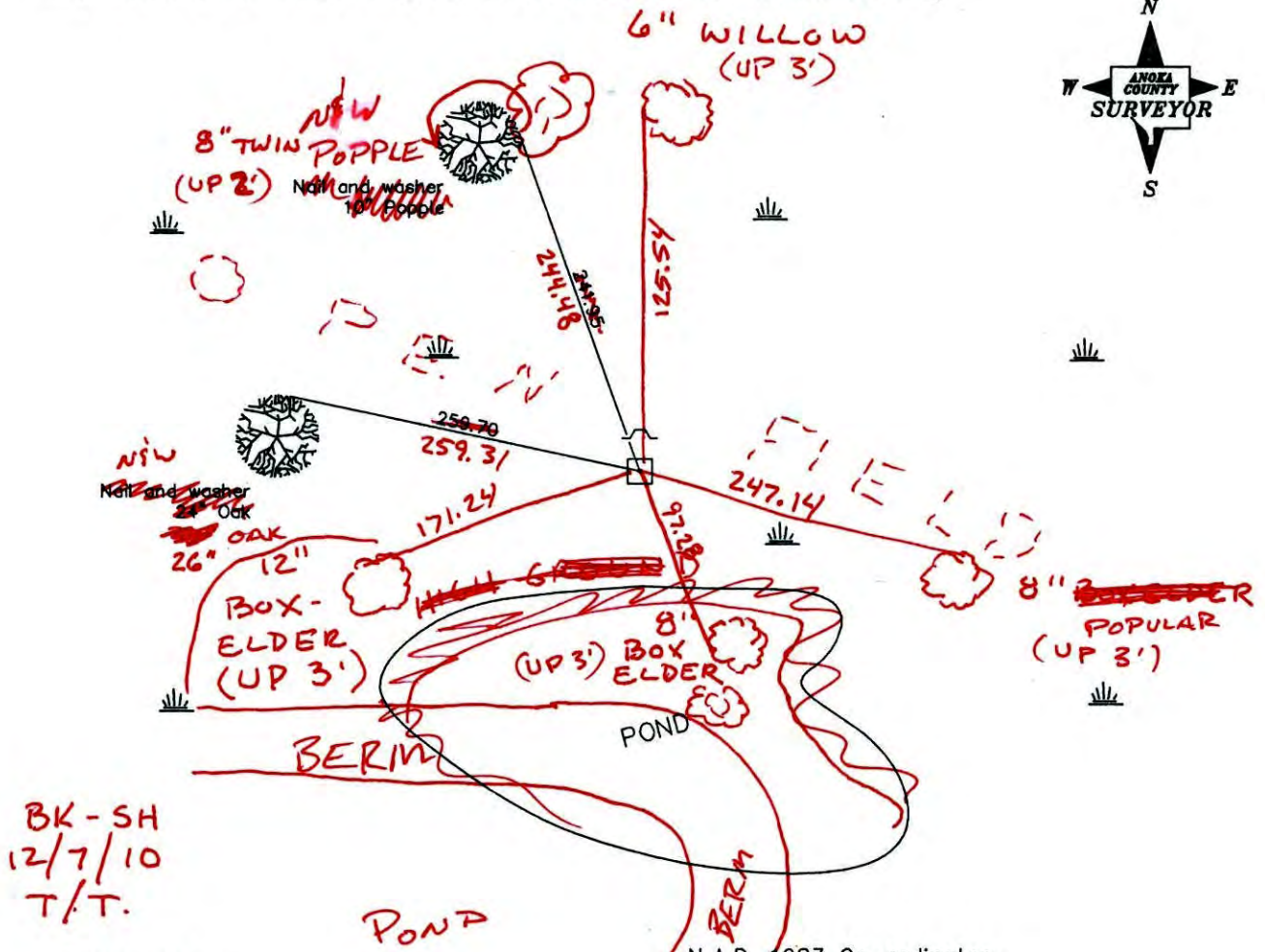
State of Minnesota

North 1/4 Corner of Sec. 36 Township 32 Range 24

I hereby certify that on the 15th day of February, 1968, I found the described corner which was evidenced by a granite monument

and I further certify that to perpetuate the location of said corner, I did, at the exact location thereof, place a permanent marker consisting of a granite monument with sign and post on the north side (LEANING SOUTH) (UP 0.2)

which reference or witness monuments are located in the manner following:



Revised date

8/31/88
4/15/97
11/30/00

N.A.D. 1983 Co-ordinates

County Project Co-ordinates	State Plane Co-ordinates
Northing <u>169610.8210</u>	Y _____
Easting <u>497682.2009</u>	X _____

Date 11/30/00

CERTIFICATE OF LOCATION OF GOVERNMENT CORNER

County of Anoka

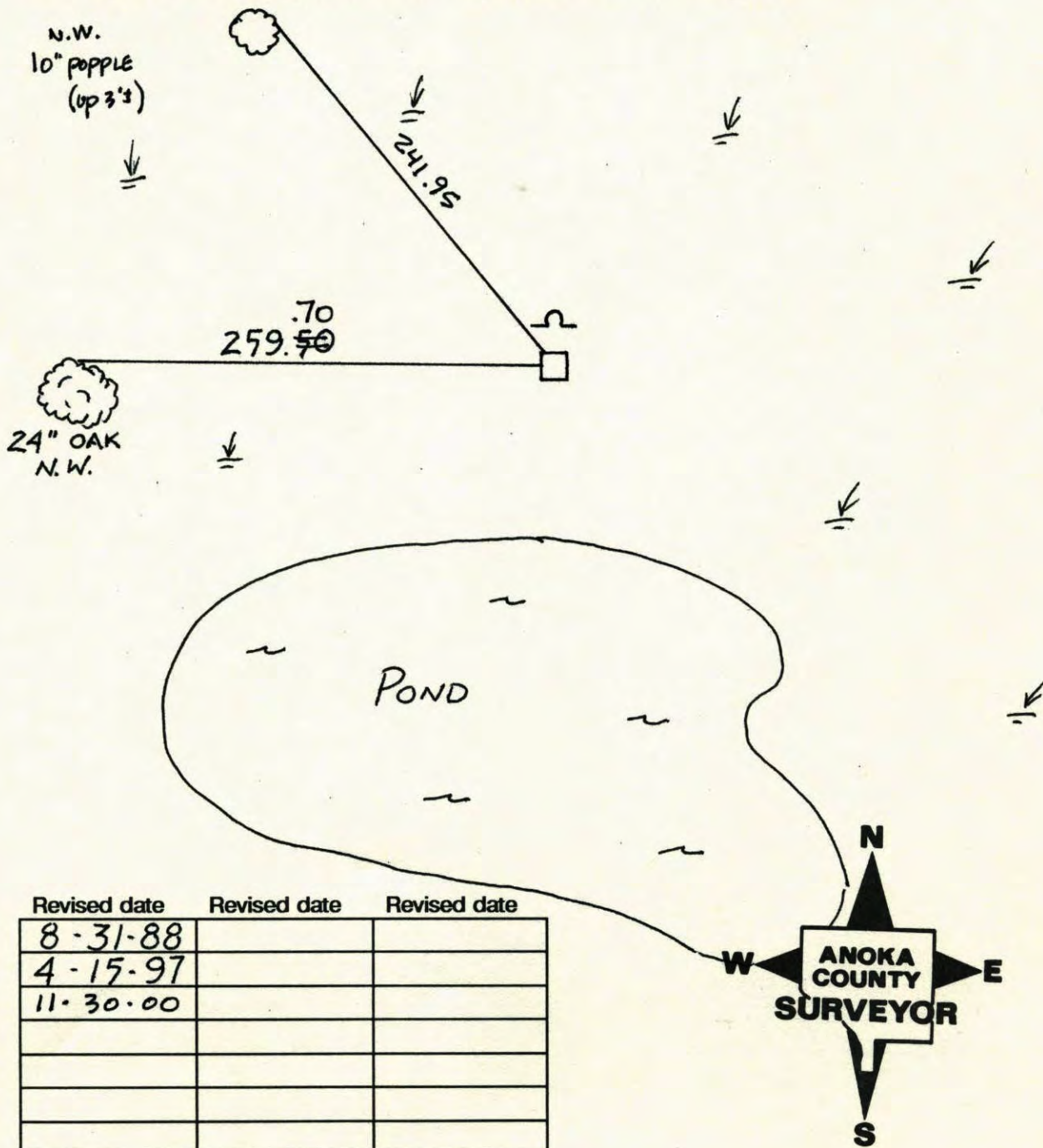
State of Minnesota

NORTH 1/4 Corner of Sec. 36 Township 32 Range 24

I hereby certify that on the 15 day of FEB., 1968, I found the described corner which was evidenced by FOUND GRANITE MONUMENT

and I further certify that to perpetuate the location of said corner, I did, at the exact location thereof, place a permanent marker consisting of POST ON NORTH SIDE OF GRANITE MONUMENT

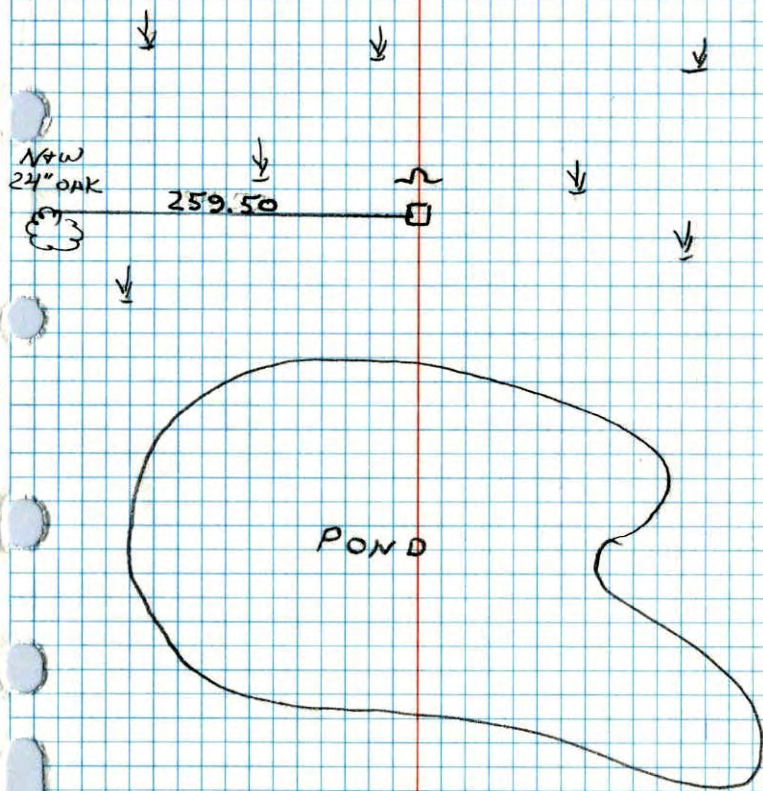
which reference or witness monuments are located in the manner following:



Revised date	Revised date	Revised date
8-31-88		
4-15-97		
11-30-00		

NORTH 1/4 SECTION 36 T32 R24

RETIED GRANITE MON. SIGN + POST ON N. SIDE

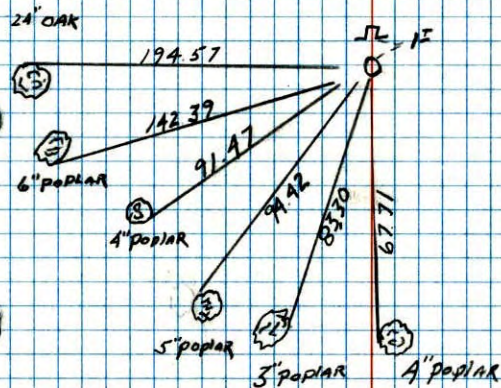
4-15-97
N. LARSON
B. KLENZ
S. SINNER

NO. 448

TELEPHONE

140TH LANE

N 1/4 CORNER SECTION 36 T 32 R 24

RESET DISTURBED GRANITE MONUMENT
CHECKED WITH SECTION BREAKDOWN
SET SIGN + POST 1' NORTH OF CORNER8-31-88
J. STEVENSON
M. NAJI-H

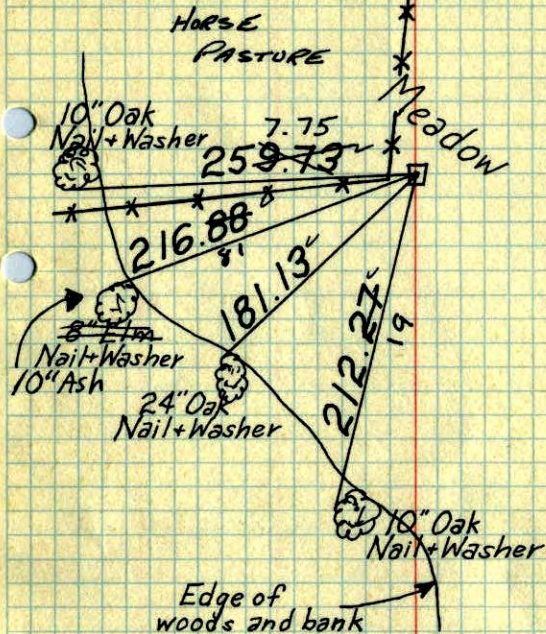
NO. 448

TELEPHONE



N¹/₄ Cor. Sec. 36-T32-R24

Granite Monument up 0.4'±



February 15, 1968
H. J. Larson
R. A. Olson

Tie Check
July 23, 1968
D. Powell
P. Pich

Tie Check
July 10, 1972
B. Olson
J. Boettcher
D. Brien

TIE CHECK
6-9-76
G ADAMS
B SANNEFUD
S BRIEN

TIE CHECK
6-13-79
B. STEPHENS
D. STEPHENS
P. ROSS

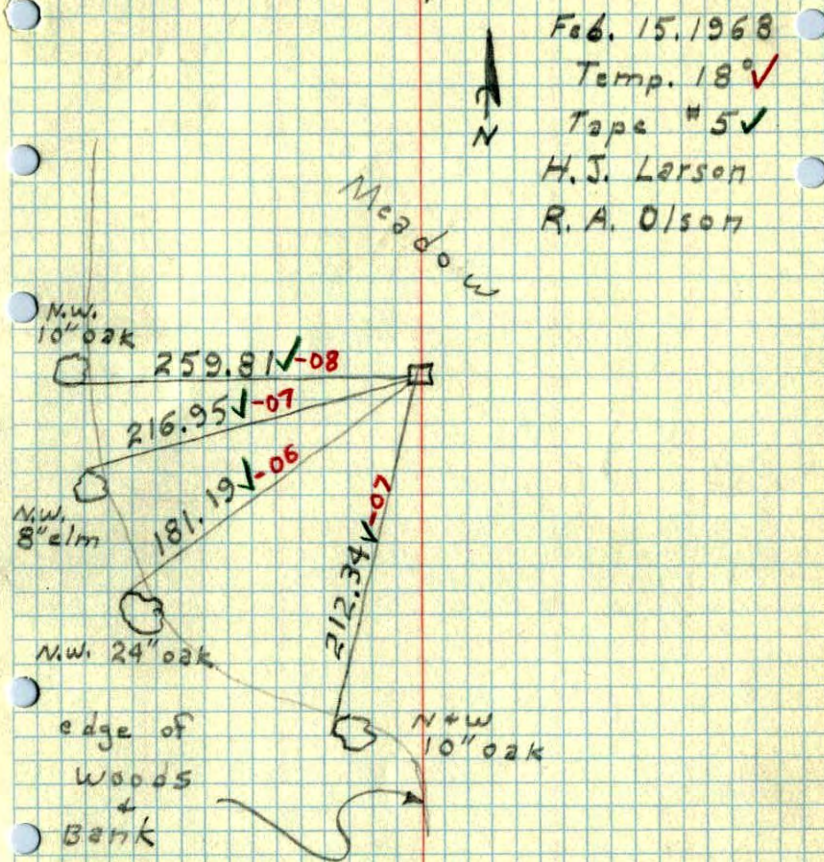
TIE CHECK
6-30-92
P. ROSS
P. HORNBY
J. BEIER

TEMPERATURE CORRECTED
AND HORIZONTALLY
TAPED MEASUREMENTS

ROLAND W. ANDERSON
COUNTY SURVEYOR
ANOKA COUNTY, MINNESOTA

N¹/₄ Cor. Sec. 36 T32 R 24

Granite mon. up .4'±



Feb. 15, 1968

Temp. 18° ✓

Tape #5 ✓

H. J. Larson

R. A. Olson

edge of
woods
Bank