

CERTIFICATE OF LOCATION OF GOVERNMENT CORNER

County of Anoka

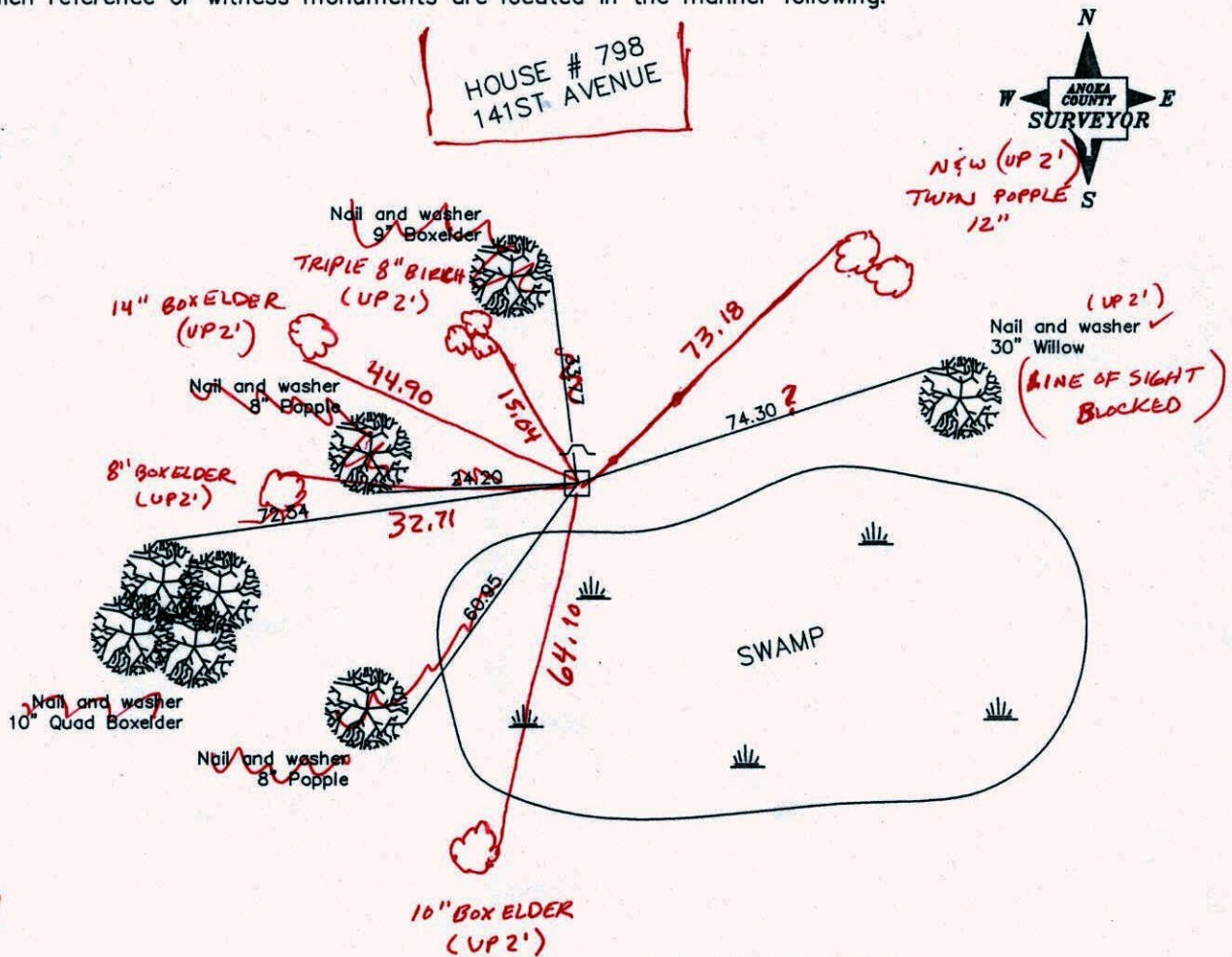
State of Minnesota

Northeast Corner of Sec. 35 Township 32 Range 24

I hereby certify that on the 10th day of May, 1960, I found the described corner which was evidenced by a granite monument

and I further certify that to perpetuate the location of said corner, I did, at the exact location thereof, place a permanent marker consisting of a granite monument with sign and post on the north side

which reference or witness monuments are located in the manner following:



1-31-11
BK-SS
TAPED Revised date

N.A.D. 1983 Co-ordinates

8/5/88
4/30/93
11/27/00

County Project Co-ordinates	State Plane Co-ordinates
Northing <u>169608.4863</u>	Y _____
Easting <u>495080.4105</u>	X _____

Date 11/27/00

CERTIFICATE OF LOCATION OF GOVERNMENT CORNER

County of Anoka

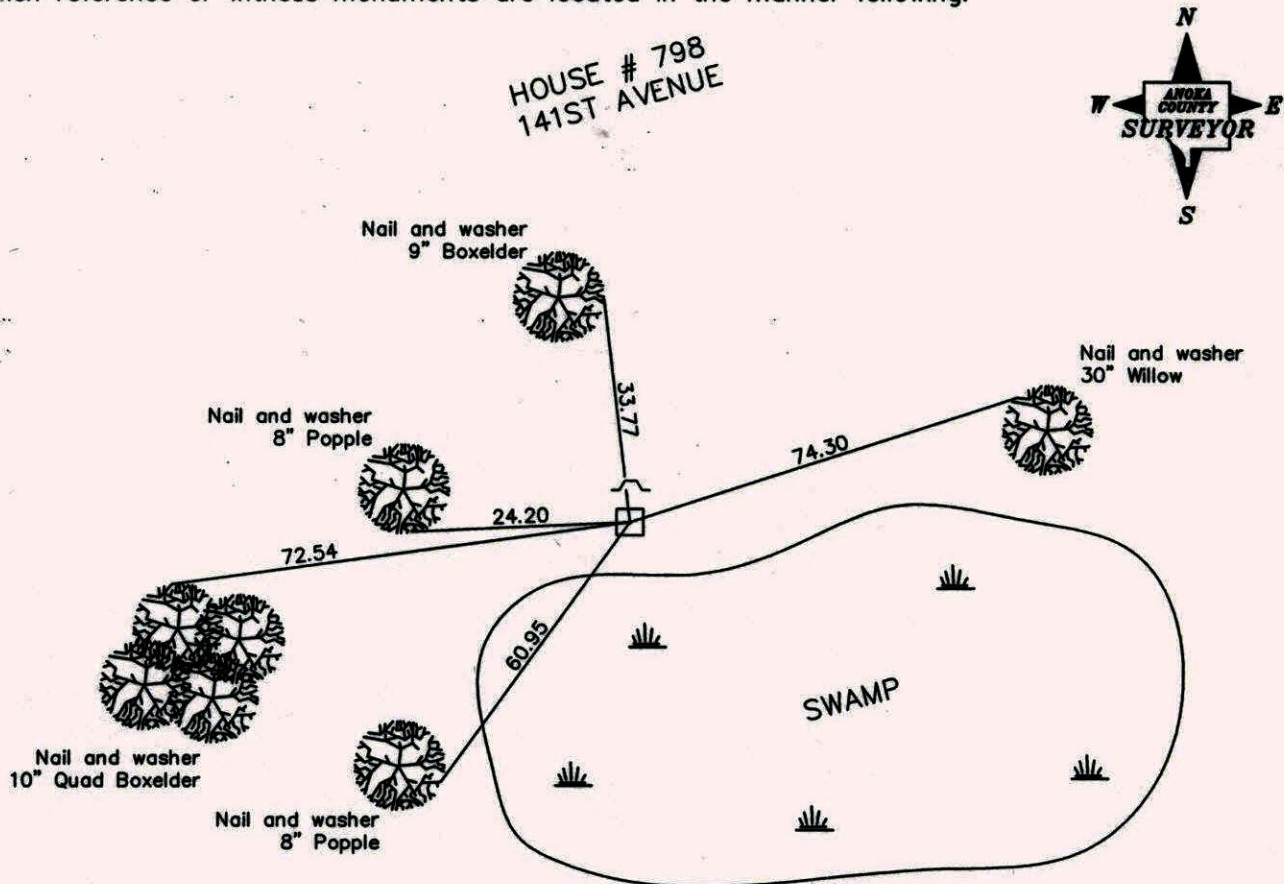
State of Minnesota

Northeast Corner of Sec. 35 Township 32 Range 24

I hereby certify that on the 10th day of May, 1960, I found the described corner which was evidenced by a granite monument

and I further certify that to perpetuate the location of said corner, I did, at the exact location thereof, place a permanent marker consisting of a granite monument with sign and post on the north side

which reference or witness monuments are located in the manner following:



Revised date

8/5/88
4/30/93
11/27/00

N.A.D. 1983 Co-ordinates

County Project Co-ordinates	State Plane Co-ordinates
Northing _____	Y _____
Easting _____	X _____

Date _____

CERTIFICATE OF LOCATION OF GOVERNMENT CORNER

County of Anoka

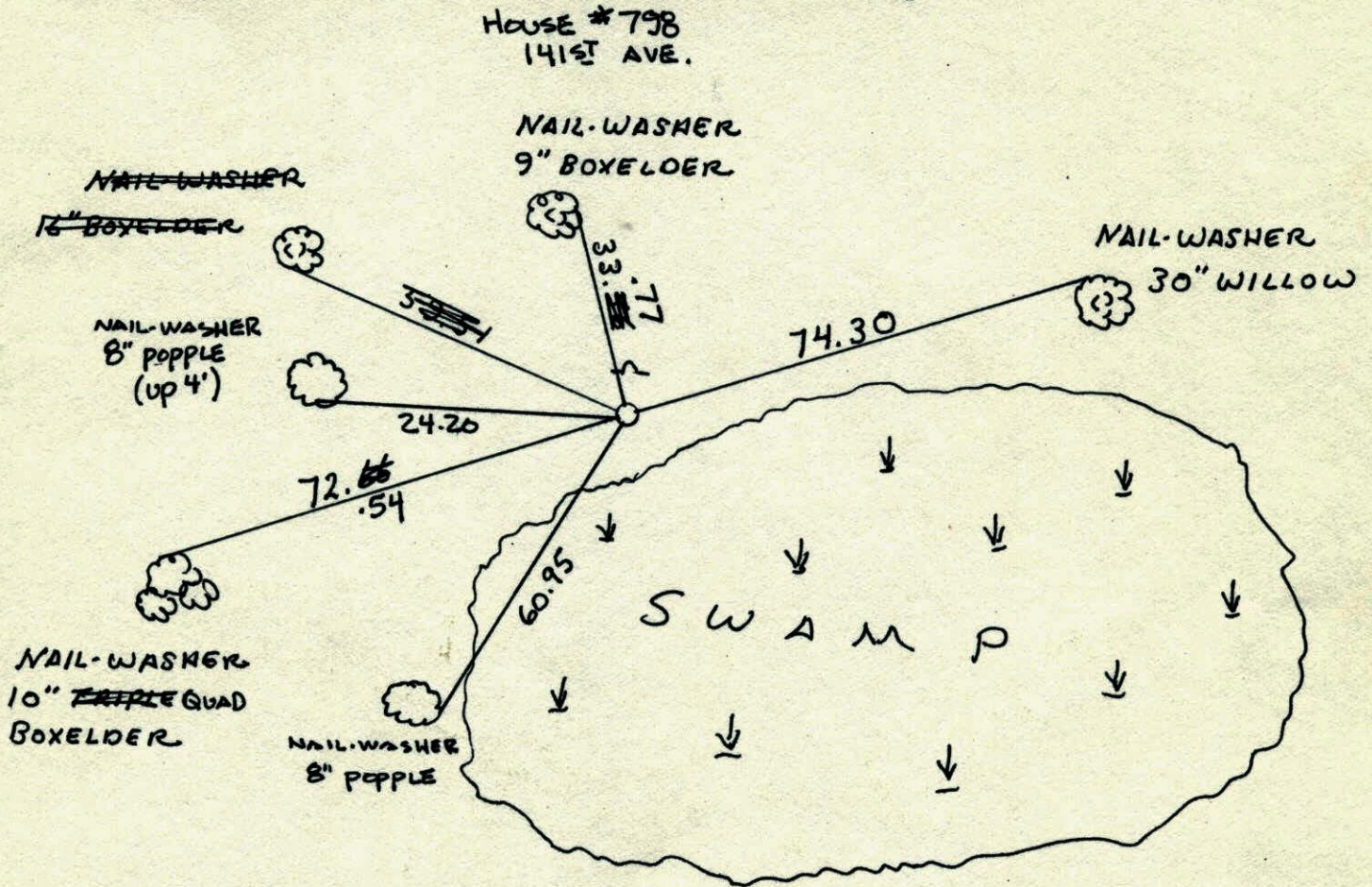
State of Minnesota

NORTHEAST Corner of Sec. 35 Township 32 Range 24

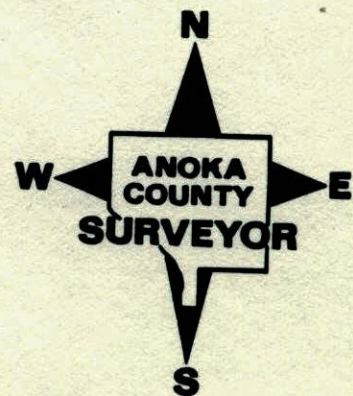
I hereby certify that on the 10 day of MAY, 1960, I found the described corner which was evidenced by GRANITE MONUMENT

and I further certify that to perpetuate the location of said corner, I did, at the exact location thereof, place a permanent marker consisting of GRANITE MONUMENT
SIGN AND POST ON NORTH SIDE

which reference or witness monuments are located in the manner following:



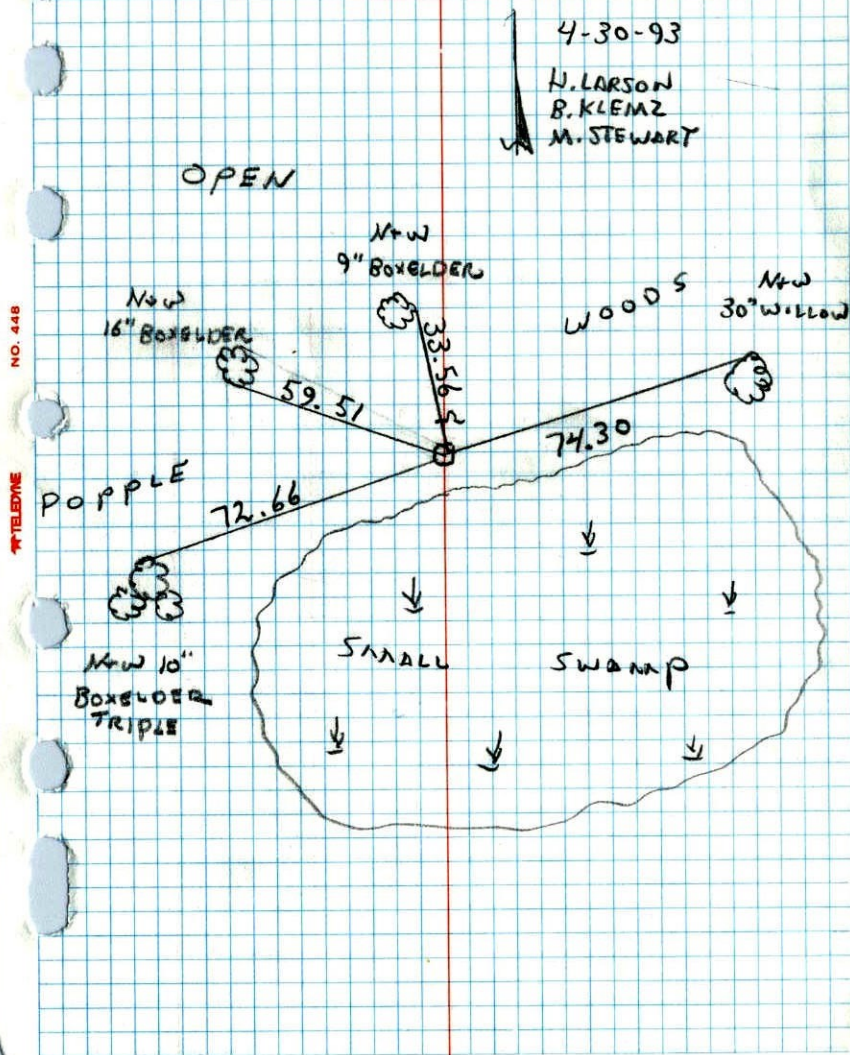
Revised date	Revised date	Revised date
8-5-88		
4-30-93		
REMOVED		
(4-30-93)		
11-27-00		



NORTHEAST COR. SECTION 35 T32 R24

REMOVED C.I. RETIED GRANITE MON.

SIGN + POST ON N. SIDE.



N.E. CORNER SEC 35 T32 R24

RETIED CAST IRON MONUMENT

