

CERTIFICATE OF LOCATION OF GOVERNMENT CORNER

County of Anoka

State of Minnesota

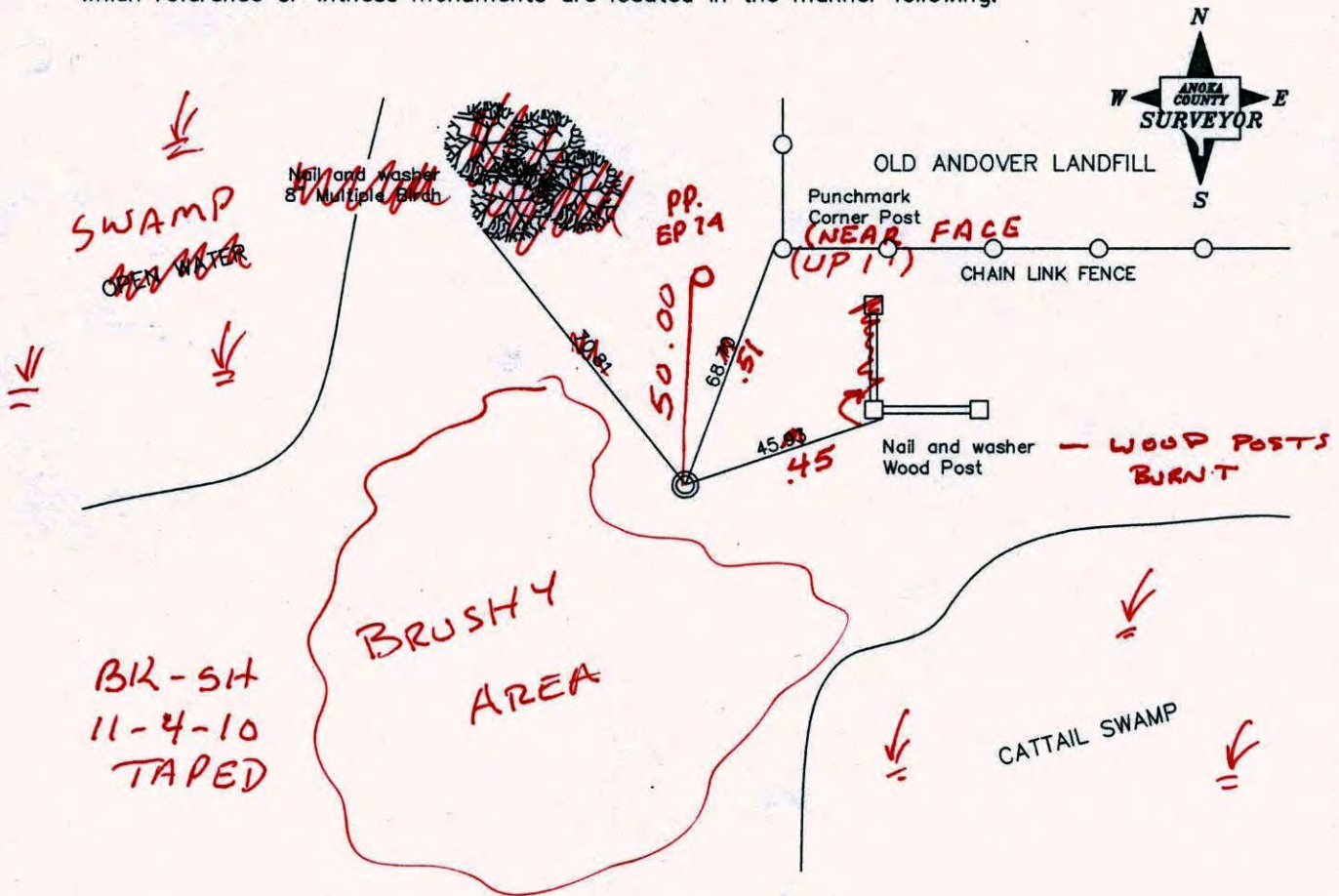
South 1/4 Corner of Sec. 27 Township 32 Range 24

I hereby certify that on the 10th day of August, 1960, I found the described corner which was evidenced by a steel fence post

and I further certify that to perpetuate the location of said corner, I did, at the exact location thereof, place a permanent marker consisting of a red and white iron pipe with sign

SIGN FACING EAST

which reference or witness monuments are located in the manner following:



Revised date

8/10/88
10/24/95
11/16/00

N.A.D. 1983 Co-ordinates

County Project Co-ordinates
Northing <u>169789.1123</u>
Easting <u>487176.0634</u>

State Plane Co-ordinates
Y _____
X _____

Date 8/10/88

CERTIFICATE OF LOCATION OF GOVERNMENT CORNER

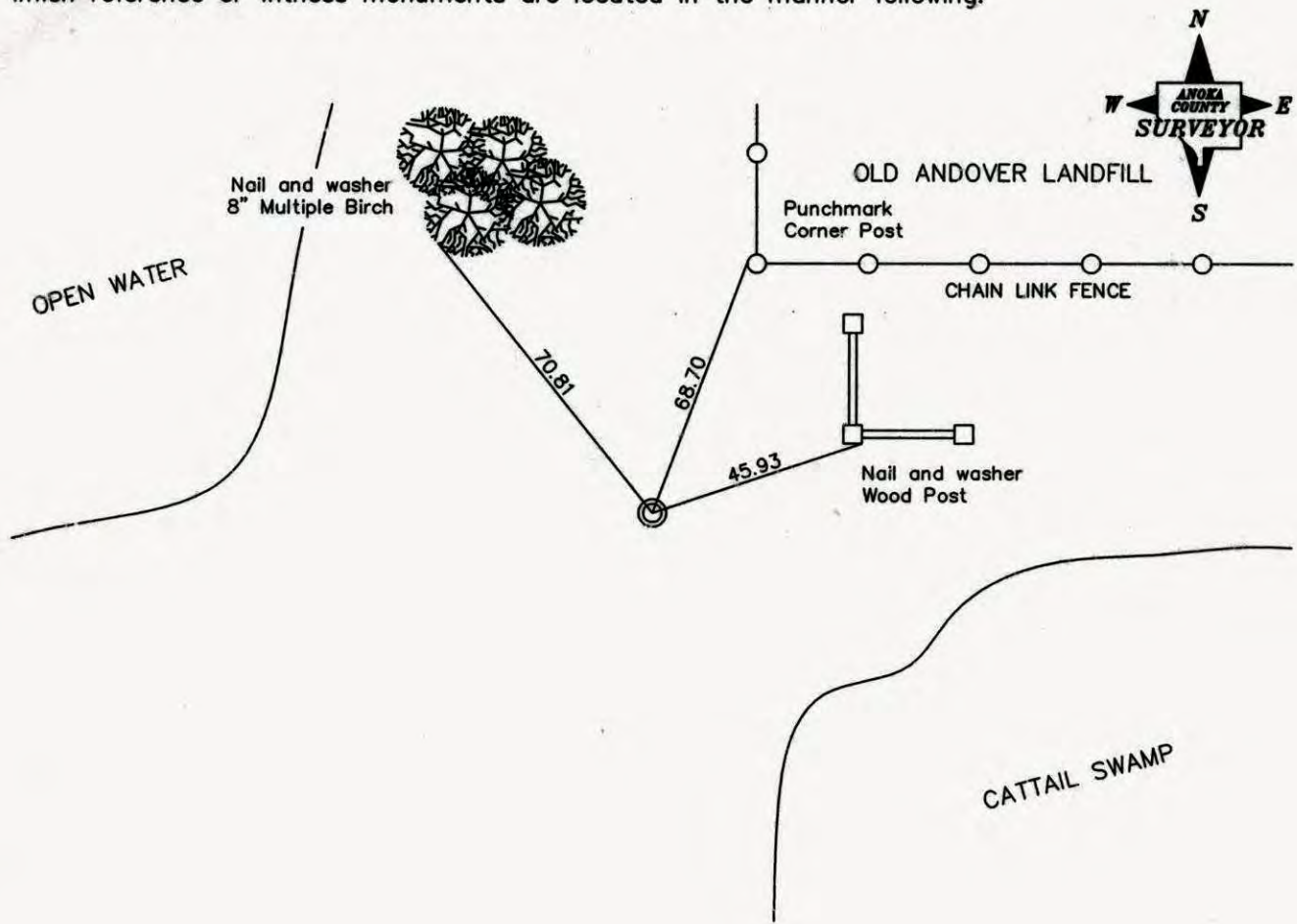
County of Anoka State of Minnesota

South 1/4 Corner of Sec. 27 Township 32 Range 24

I hereby certify that on the 10th day of August, 1960, I found the described corner which was evidenced by a steel fence post

and I further certify that to perpetuate the location of said corner, I did, at the exact location thereof, place a permanent marker consisting of a red and white iron pipe with sign

which reference or witness monuments are located in the manner following:



Revised date

7/6/82
8/10/88
10/24/95
11/16/00

N.A.D. 1983 Co-ordinates

County Project Co-ordinates	State Plane Co-ordinates
Northing _____	Y _____
Easting _____	X _____

Date _____

CERTIFICATE OF LOCATION OF GOVERNMENT CORNER

County of Anoka

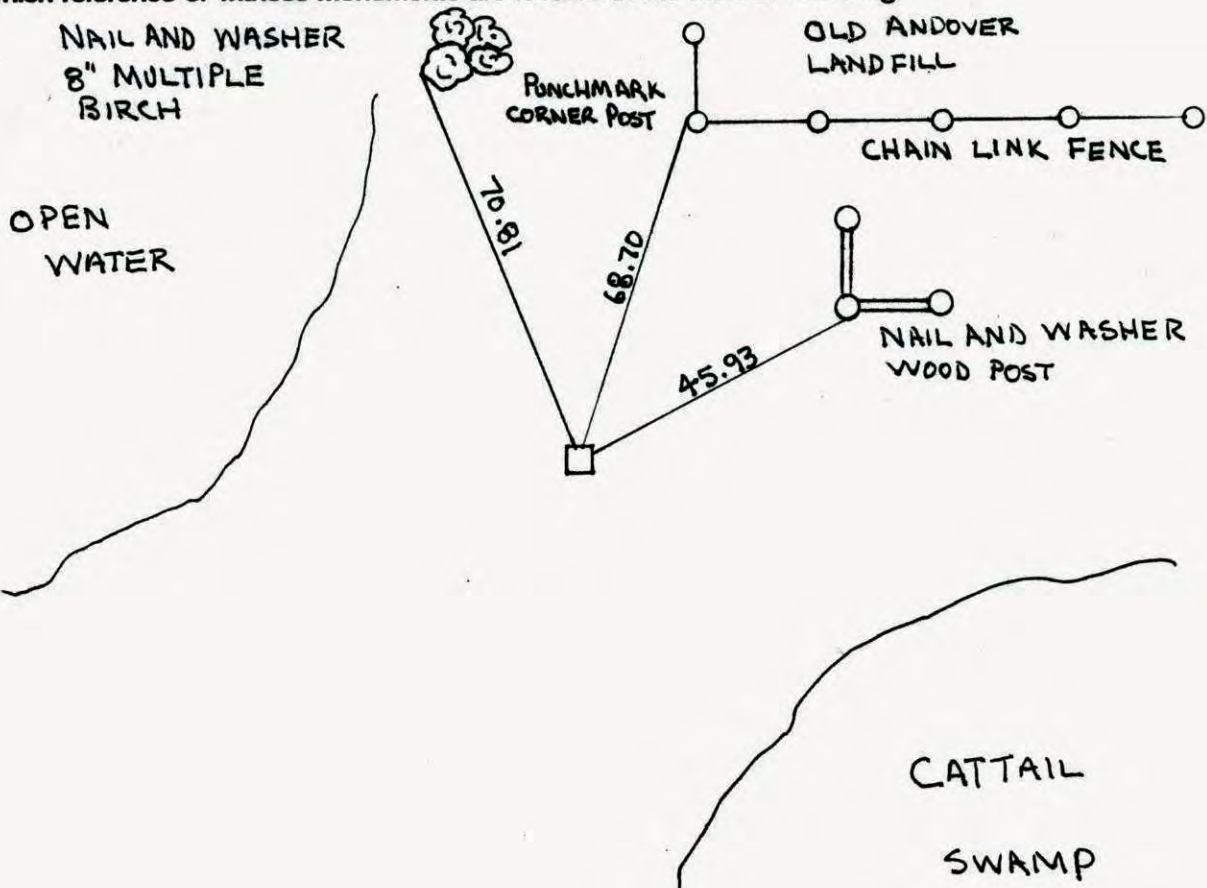
State of Minnesota

SOUTH QTR. Corner of Sec. 27 Township 32 Range 24

I hereby certify that on the 10TH day of AUGUST, 19 60, I found the described corner which was evidenced by STEEL FENCE POST

and I further certify that to perpetuate the location of said corner, I did, at the exact location thereof, place a permanent marker consisting of RED AND WHITE IRON PIPE WITH ~~PH~~ SIGN

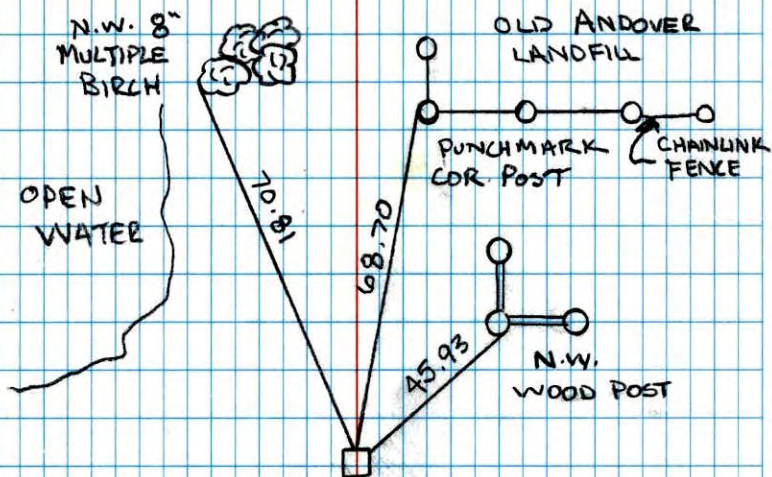
which reference or witness monuments are located in the manner following:



Revised date	Revised date	Revised date
7-6-82		
8-10-88		
10-24-95		
11-16-00		



SOUTH QTR. CORNER SEC. 27, T. 32, R. 24

RETIED RED AND WHITE IRON PIPE
& GPS.

NO. 446

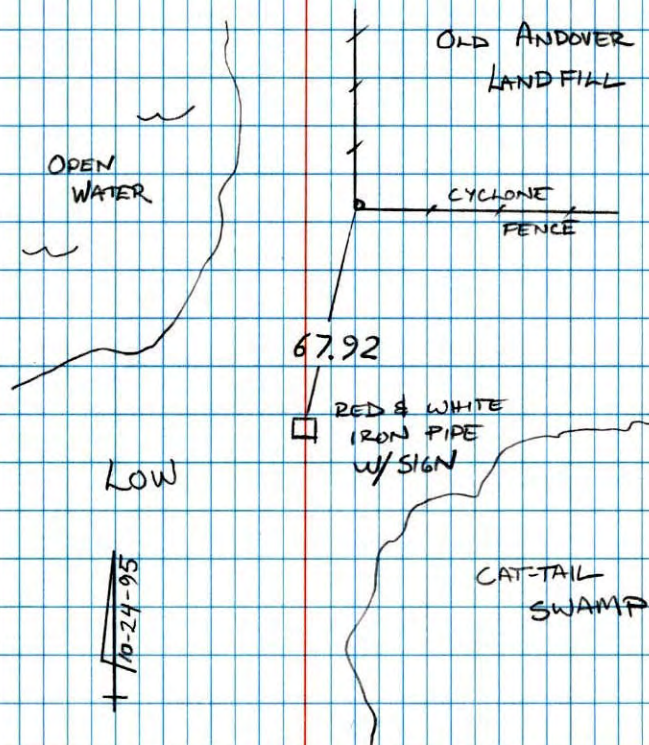
NATIONAL PRINTFAST

11-16-00

J. SIMMER

T. SCHWAB

B. KLEWZ

CATTAIL
SWAMPS 1/4 27
NORTH QUARTER SEC ~~24~~ T 32 R 24
REPLACE & RETIED
RED AND WHITE IRON PIPE
WITH SIGN

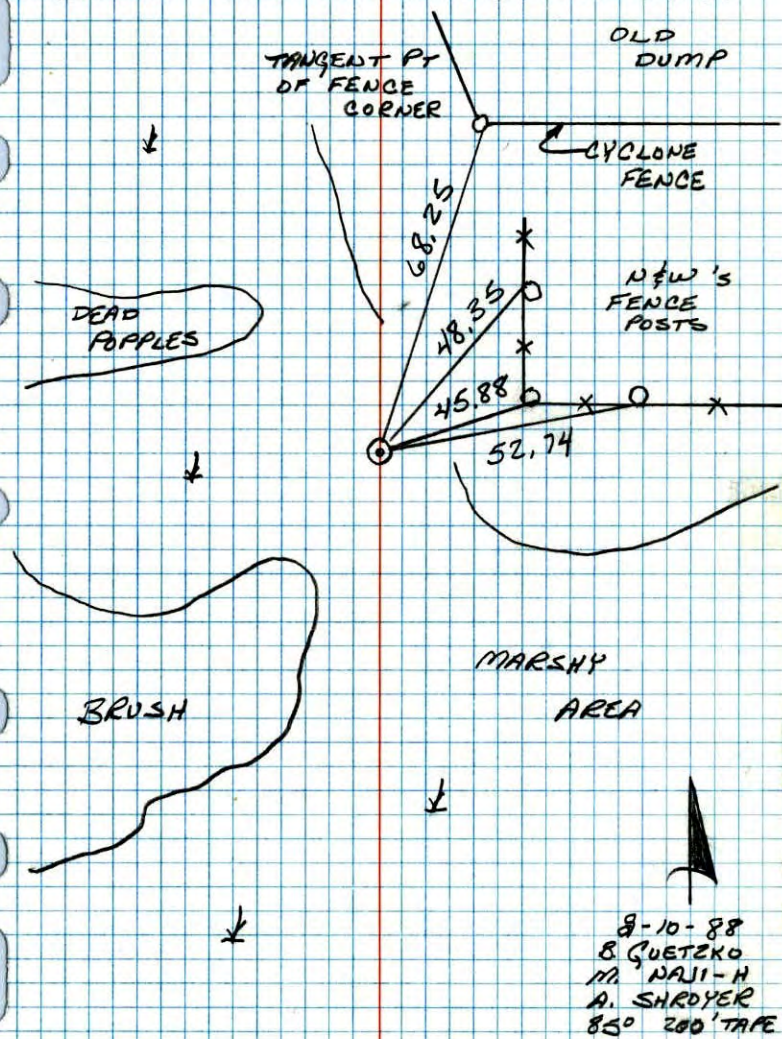
NO. 446

NATIONAL PRINTFAST

M. STEWART
B. KLEWZ

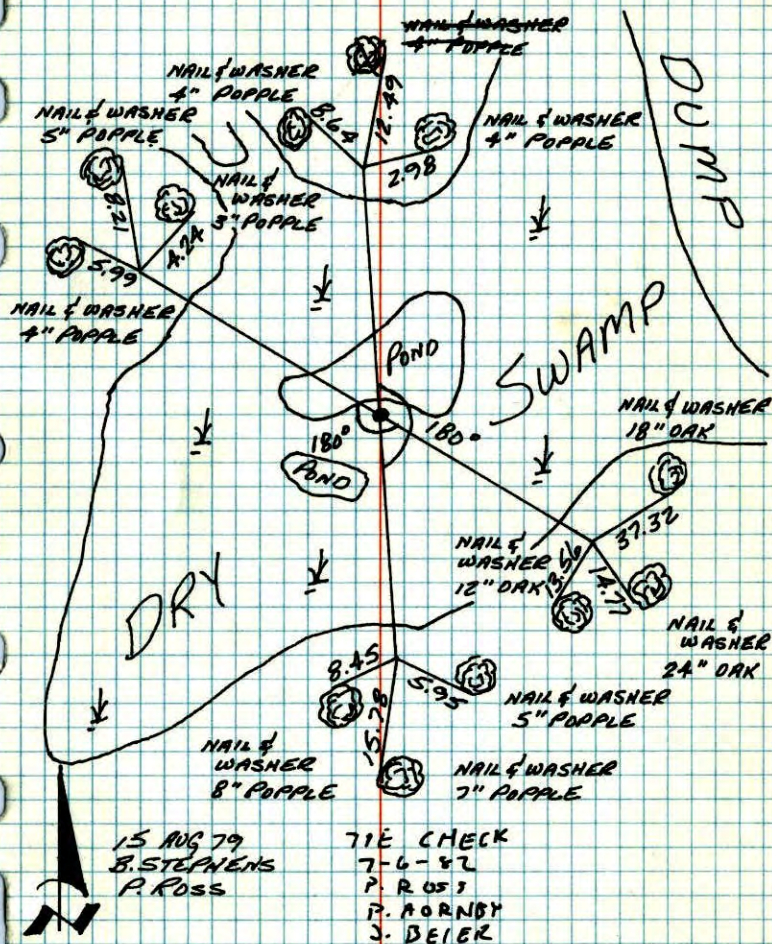
S 1/4 CORNER SEC 27 T32 R24

RETIRED RED AND WHITE IRON PIPE.



S 1/4 CORNER SECTION 27-T32-R24

RESET TRANSIT TIES TO RED AND WHITE IRON PIPE
IN MOSTLY DRY SWAMP. RED AND WHITE SET 7-19-77
BY H. LARSON. RED AND WHITE UP 3.5'±.

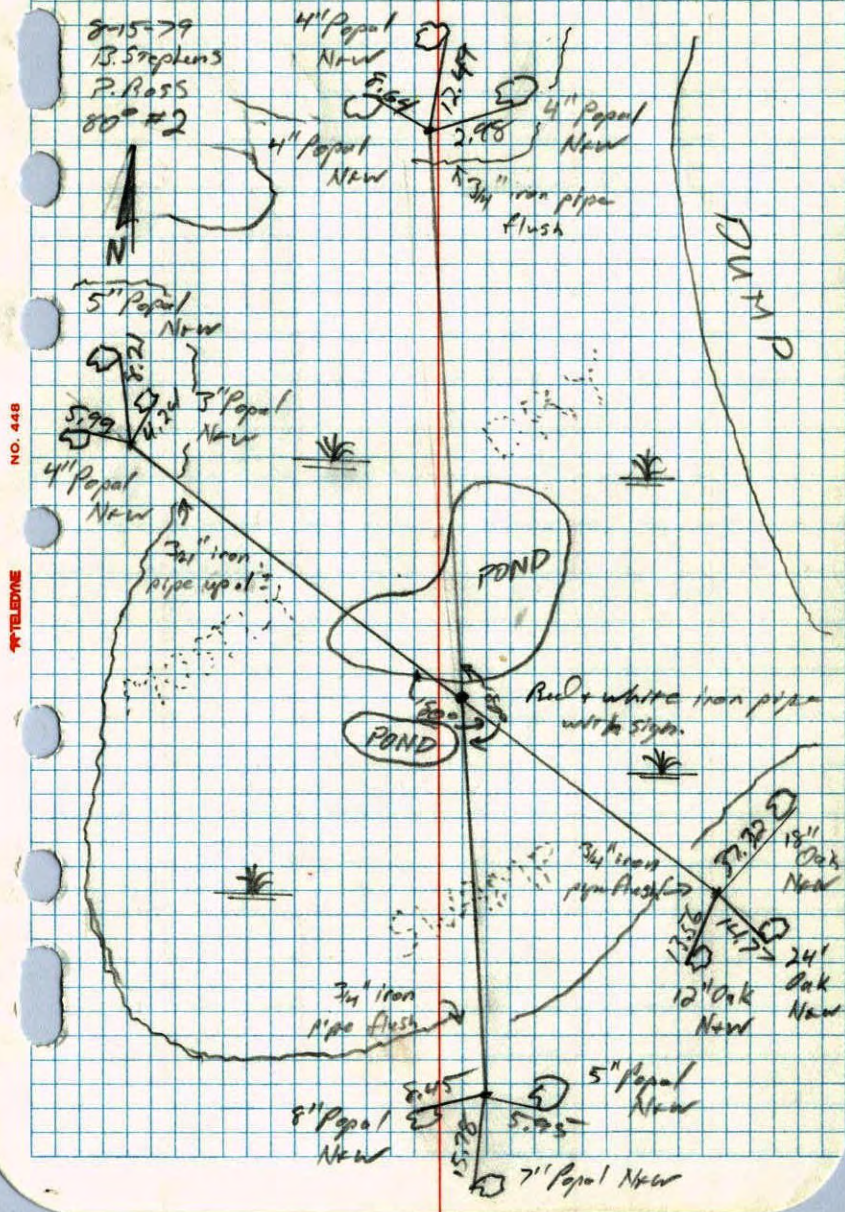


TEMPERATURE CORRECTED
AND HORIZONTALLY
TAPED MEASUREMENTS

ROLAND W. ANDERSON
COUNTY SURVEYOR
ANOKA COUNTY, MINNESOTA

#1/4 Corner Section 79-732-R24 103
5
27

Set Transit ties from red & white iron pipe
in mostly dry swamp. Arw up 3.5'±.



NO. 448

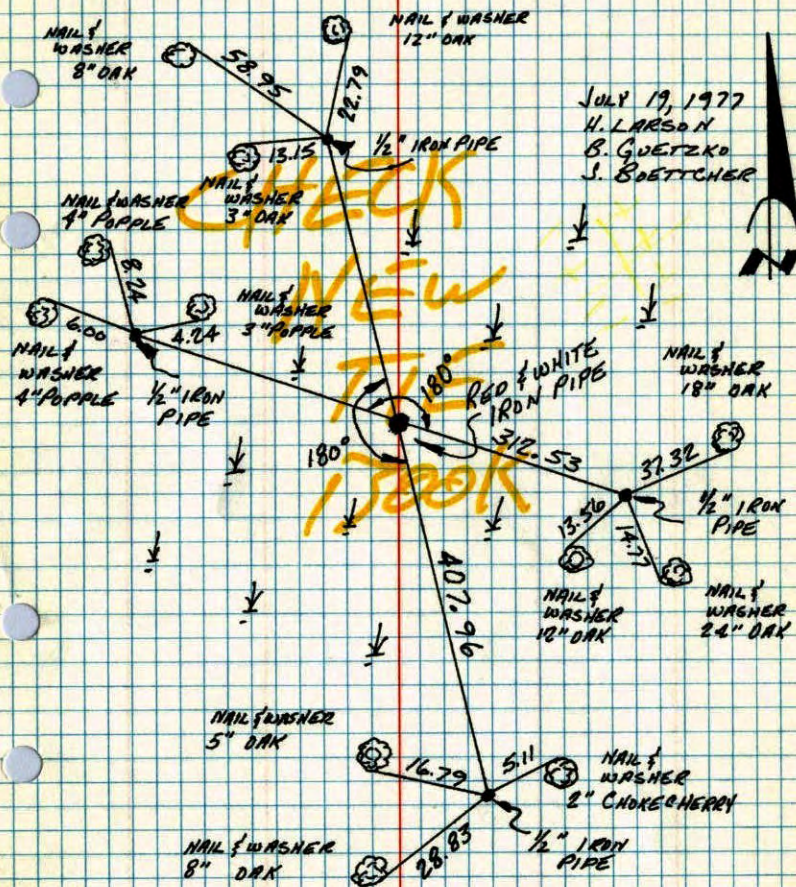
TELEPHONE

S 1/4 COR. SEC. 27 - T32 - R24

SET RED & WHITE IRON PIPE FROM THREE ORIGINAL TRANSIT

TIES. IRON PIPE ALSO MATCHES PLAT TO THE WEST.

IRON PIPE UP 3'± WITH SIGN. RETIED 1/2" IRON PIPES.



JULY 19, 1977
 H. LARSON
 B. GUETZKO
 J. BOETTCHER

TEMPERATURE CORRECTED ROLAND W. ANDERSON
 AND HORIZONTALLY COUNTY SURVEYOR
 TAPED MEASUREMENTS ANOKA COUNTY, MINNESOTA

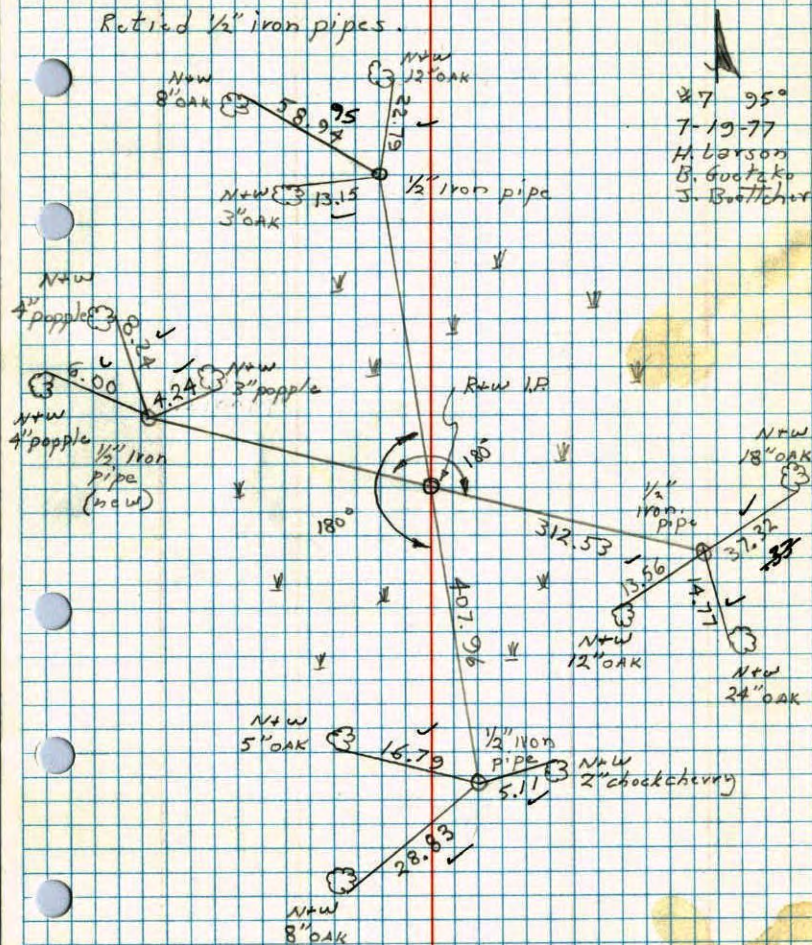
S 1/4 Cor. Sec. 27 T32 R24

Set red and white iron pipe from three

original transit ties I.P. also matches

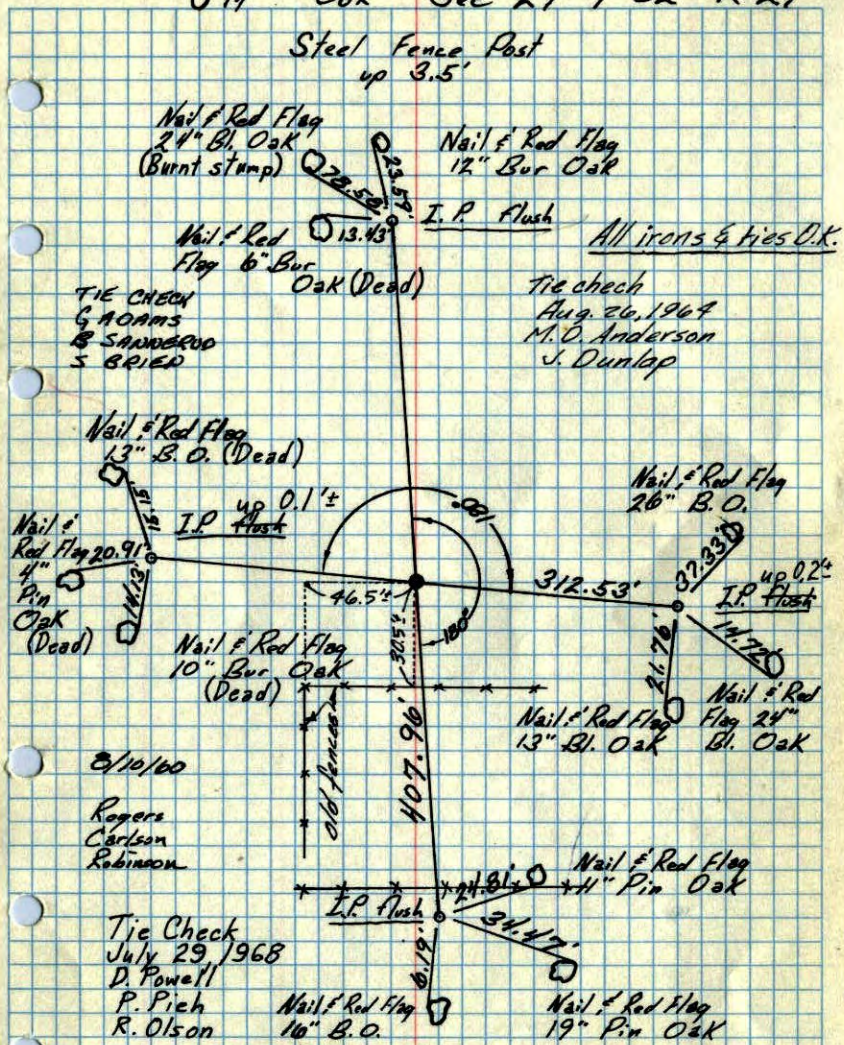
plat to west. I.P. up 3'± with sign.

Retied 1/2" iron pipes.



JULY 19, 1977
 H. LARSON
 B. GUETZKO
 J. BOETTCHER

S 1/4 Cor Sec 27-T32-R24



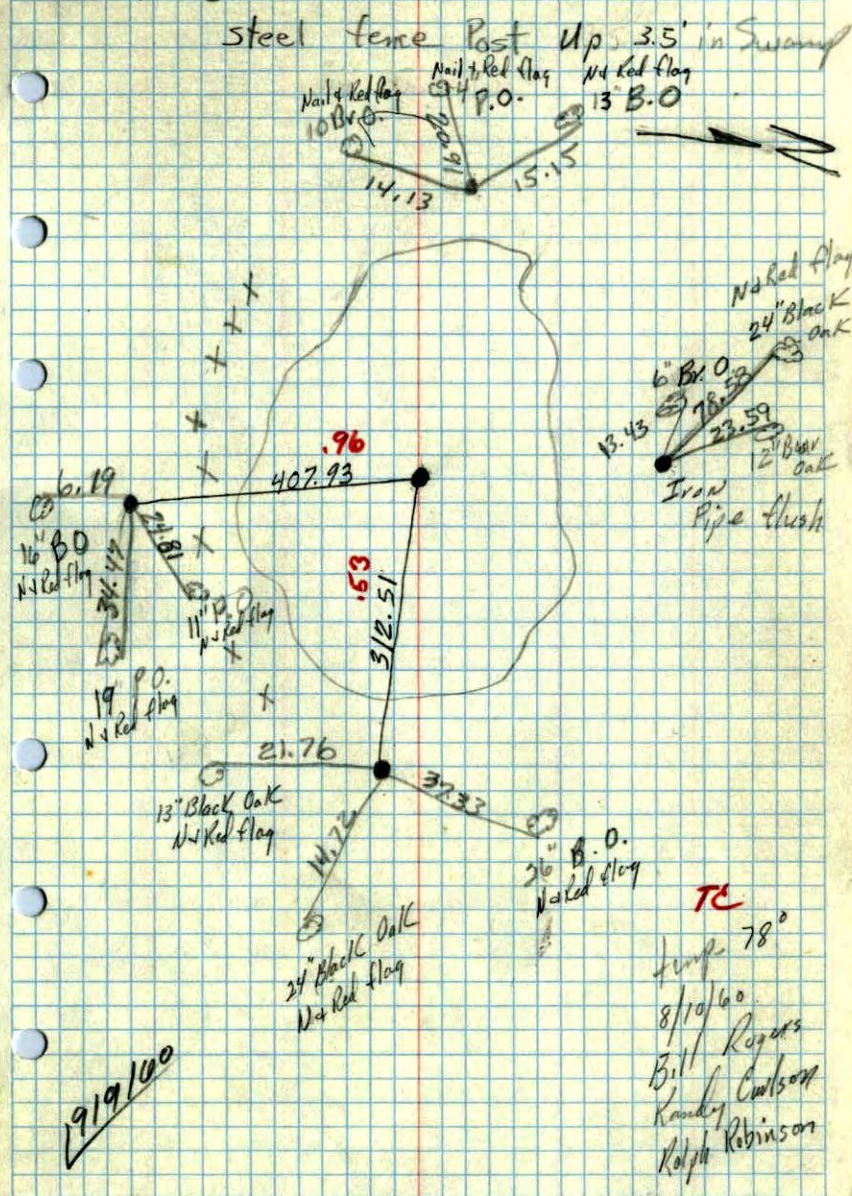
8/10/60
Rogers
Carlson
Robinson

Tie Check
July 29, 1968
D. Powell
P. Pieh
R. Olson

TEMPERATURE CORRECTED
AND HORIZONTALLY
TAPED MEASUREMENTS

ROLAND W. ANDERSON
COUNTY SURVEYOR
ANOKA COUNTY, MINNESOTA

S 1/4 Cor Sec 27 T32 R24

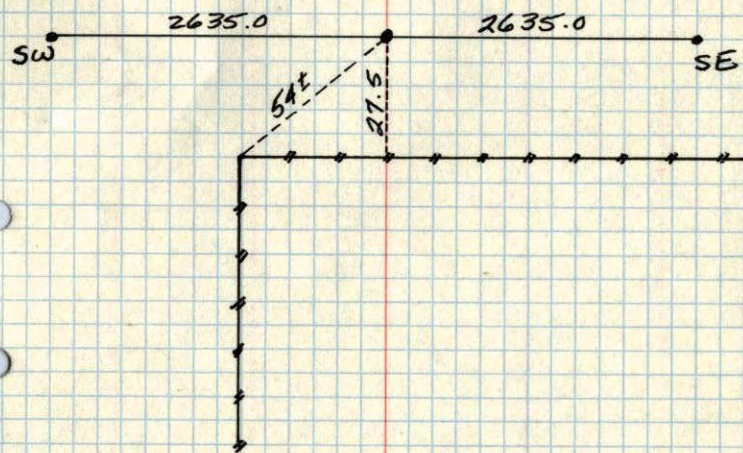


8/19/60

S¹/₄ Sec 27 T 32 R 24 21

Steel Fe. Post

up 3.5' in Swamp



N.C.H